



Camas City Council: PROS Plan

Work Session: February 22, 2022



What is the PROS Plan?

The Parks, Recreation & Open Space (PROS) Plan is a 6-year guide and strategic plan for managing and enhancing parks, open space, trails, and recreation opportunities for the Camas community.*

- *Policy & Strategy Guide*
- *Capital Planning Tool*
- *Communications Tool*
- *Eligibility for grant funding*

*The last plan was adopted in 2014.



Steps to Building the Plan:



Phase 1: Data Gathering & Community Input

Phase 2: Building the Plan with continued Community Input

Phase 3: Plan Adoption

Spring/Summer 2021

Gather community feedback through a community-wide survey and hold stakeholder discussions, tabling events, and an online open house.

Summer/Fall 2021

Create the draft PROS Plan update, which will be shared with the community through a second online open house.

Winter 2021/2022

Incorporate community feedback into the final draft of the PROS Plan update and present to City Council for approval.



WE ARE HERE -
Draft Preview &
Incorporate feedback

PROS Plan Structure

Contents:

1. Introduction & Community Profile
2. Community Engagement
3. Inventory & Classifications
4. Parks & Trails
5. Open Space & Stewardship
6. Recreation & Events
7. Operations & Maintenance
8. Goals & Policies
9. Capital Projects & Implementation
10. Appendices



CHAPTER 1

A Thriving CAMAS

”
When my kids were young activities such as the Easter Egg Hunt and Boo Bash were important as was safe, accessible and fun playground equipment. Without children in our household, I'm more interested in trails, both walking and biking.
- Survey respondent

PURPOSE OF THE PLAN

The City of Camas Parks, Recreation & Open Space Plan (PROS Plan) is an update to the 2016 Parks, Recreation & Open Space Plan that builds on the previously completed planning work and incorporates the feedback from an extensive community engagement process conducted throughout 2021. This Plan creates a vision for an innovative, inclusive, and interconnected system of parks, trails, and open space that promotes recreation, health, environmental conservation, and fiscal responsibility as integral elements of a thriving, livable Camas.

The PROS Plan serves as a blueprint for the growth, enhancement, and management of the City of Camas parks and recreation system and assists in guiding decisions related to planning, acquiring, developing, and maintaining parks, open space, trails, and recreational facilities. This plan also identifies priorities for recreation programs and special events.

The 2021 PROS Plan provides updated system inventories, demographic conditions, needs analyses, and a comprehensive capital project list. The Plan identifies parks and recreation goals and establishes a long-range plan for the Camas parks and recreation system, including action items and strategies for implementation over the next six to 10 years. The recommendations in this Plan are based on community input, evaluations of the existing park system, operating conditions, and fiscal considerations.

Photo: Paul Newmann

The PROS Plan is part of the City's broader Comprehensive Plan and is consistent with the guidelines established by the Growth Management Act. The PROS Plan, updated approximately every six years, allows Camas to remain current with community interests and retain eligibility for state grants through the Washington State Recreation and Conservation Office (RCO), which administers various grant programs for outdoor recreation and conservation efforts.

Introduction

Guiding Values

Vision

We envision Camas as a thriving, cohesive community that honors a unique legacy of coordinated parks, trails, natural areas and diverse recreation opportunities highlighted by our lakes, rivers and streams. Stewardship and thoughtful enhancement of these assets ensure a safe, healthy, active and balanced lifestyle for all.

VISION STATEMENT



MISSION STATEMENT

Themes: Legacy Vibrant
Engage Sustainability Inclusive
Progressive Quality of Life Foster

Introduction

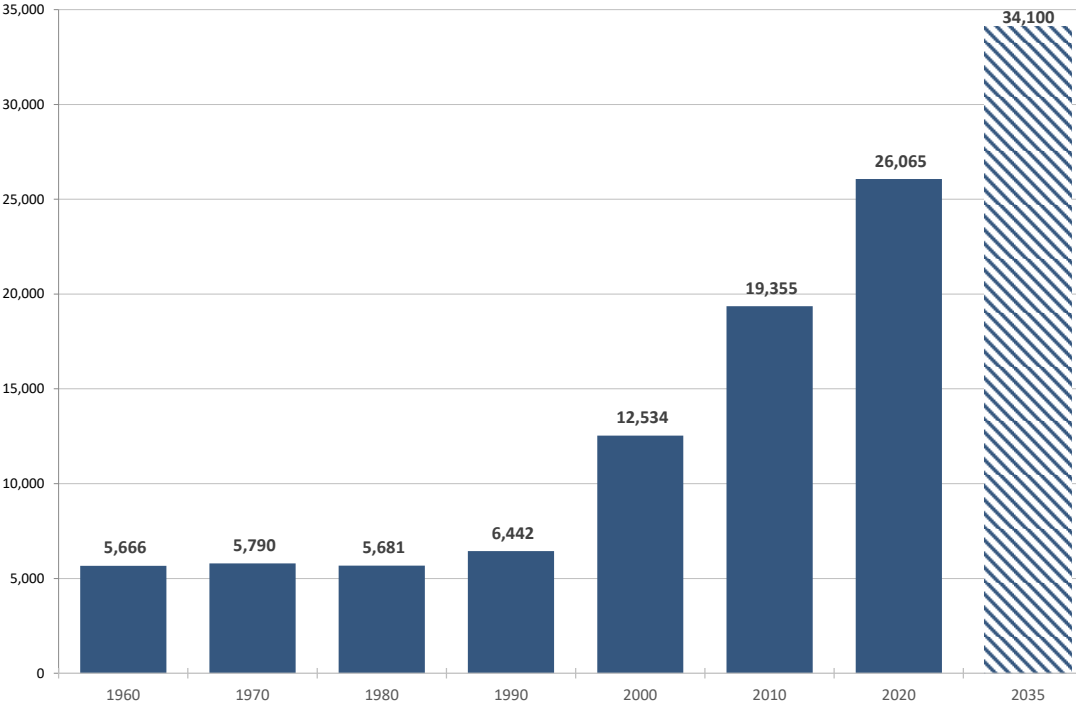
Current Challenges

- COVID-19 Pandemic
- Equity, Inclusivity & Accessibility
- Growth & Development
- Asset Management
- Active Older Adults



Community Profile

- Over 300% growth since 1990
- Additional 8,000 people by 2035



Community PROFILE

Situated in the eastern, hilly portion of Clark County, the City of Camas offers many amenities for the community including a quaint yet vibrant downtown, First Friday evening family events, a beautiful public library, summer farmer's market on Wednesdays, Lacamas Lake and miles of surrounding trails to walk, and much more.

The City of Camas is located along the Columbia River and State Route 14 in southwestern Washington. Incorporated in 1906, Camas is now home to 26,065 residents. Camas prides itself on its small-town character, vibrant downtown, safe residential neighborhoods, and an abundance of open space and trails.

Most of the City is developed with single family homes interspersed with forested green spaces. The City's historic downtown attracts locals and tourists while major employers, including many high-tech manufacturers, provide employment opportunities for city and regional residents. The City is bordered to the east by the City of Washougal and by the City of Vancouver to the west. Camas is located just 20 miles from downtown Portland, Oregon.

The City of Camas provides a wide range of government services and is dedicated to maintaining the community's family-friendly character while providing sustainable economic growth and preserving the city's access to nature. The City's parks, open spaces, trails, and recreational opportunities are highly valued – for recreation, respite, and their ecosystem values.



8 | Camas PROS Plan 2022



”
I love the walking trails through the natural areas SO MUCH!! Would love to have more of them connected.
- Online Open House participant

- Slightly larger households
- Slightly older average age
- Growing more diverse

Community Engagement

Robust & COVID-sensitive Outreach

- Survey (random-sample mail, plus online)
- Online open house on priorities
- Topic-oriented stakeholder group discussions
- Event tabling
- Engage Camas, online & social media
- Online open house on draft plan
- Significant P&R Commission guidance
- Multiple City Council touch points



Community Engagement

Top Three Priorities

- Maintain What We Have
- Fill Gaps & Improve Trail Connections
- Develop & Improve Existing Parks

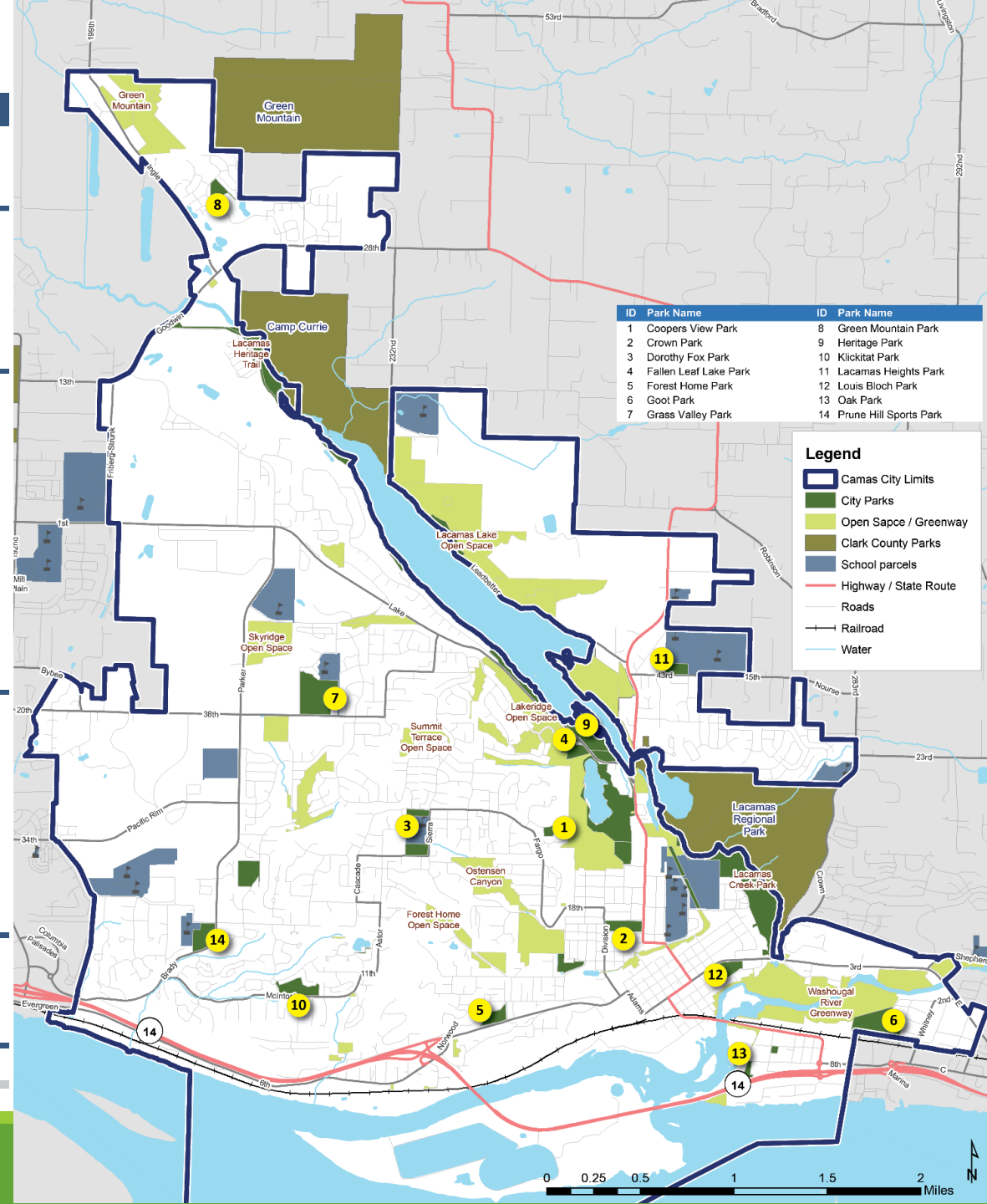


Inventory

1,050 acres

- Neighborhood Parks
- Community Parks
- Regional Parks
- Special Use Areas
- Natural Open Space
- Cemetery

Name	Classification	Status	Acreage
Fallen Leaf Lake Park	Regional Park	Developed	54.8
Green Mountain	Regional Park	Undeveloped	114.2
Subtotal			169.0
Crown Park	Community Park	Developed	7.3
Grass Valley Park	Community Park	Developed	25.0
Goot Park	Community Park	Developed	5.8
Heritage Park	Community Park	Developed	12.8
Prune Hill Sports Park	Community Park	Developed	9.0
Subtotal			59.7
Ash Creek Park	Neighborhood Park	Undeveloped	9.7
Benton Park	Neighborhood Park	Undeveloped	2.2
Coopers View Park	Neighborhood Park	Developed	2.5
Dorothy Fox Park	Neighborhood Park	Developed	5.0
Forest Home Park	Neighborhood Park	Developed	4.7
Green Mountain Neighborhood Park	Neighborhood Park	Developed	5.3
Klickitat Park	Neighborhood Park	Developed	8.8
Lacamas Heights Park	Neighborhood Park	Undeveloped	2.3
Louis Bloch Park	Neighborhood Park	Developed	5.0
Oak Park	Neighborhood Park	Developed	2.5
Ostensen Canyon Park	Neighborhood Park	Undeveloped	8.2
Subtotal			56.2
Baz Park	Special Facility	Developed	0.6
Camas Community Center	Special Facility	Developed	0.9
Downtown Community Garden	Special Facility	Developed	0.1
Fallen Leaf Softball Field	Special Facility	Developed	6.0
Lacamas Lake Lodge & Conference Center	Special Facility	Developed	4.8
Leadbetter House	Special Facility	Undeveloped	3.0
Pomaria House	Special Facility	Undeveloped	3.0
Skate Park	Special Facility	Developed	0.9
Subtotal			19.4
Heritage Trail	Trail / Linear Park	Developed	30.9
Mill Ditch Trail	Trail / Linear Park	Undeveloped	1.7
Renaissance Summit Trail Access	Trail / Linear Park	Undeveloped	0.4
Subtotal			33.0
Greenways & Natural Areas			Subtotal
			705.3



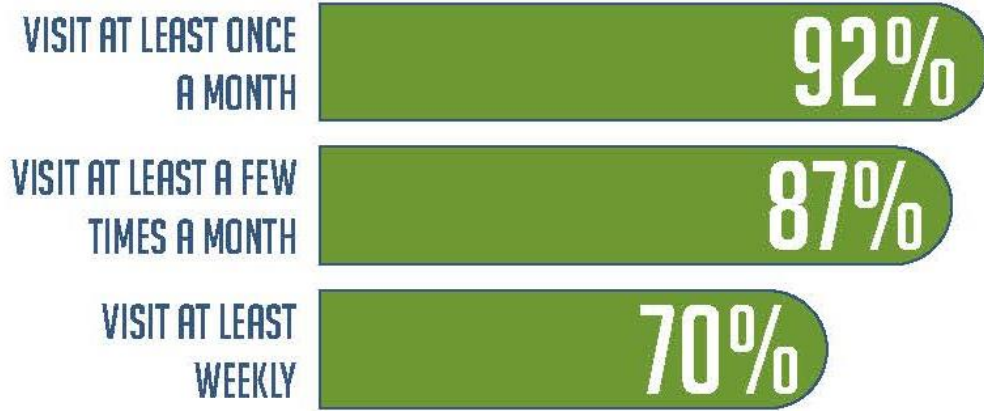
Other Recreational Opportunities

- Clark County
- Camas School District
- Homeowner Associations
- Port of Camas-Washougal
- Adjacent cities



Parks & Trails

Figure 9. Frequency of Visitation to Parks, Trails & Open Space



CHAPTER 5

Parks & TRAILS

Metric	Median Value		
	All Agencies	Pop. Range 20-50,000	Camas
Residents per Park	2,281	1,963	1,629
Acres of Parkland per 1,000 population	9.9	9.6	40.8
Miles of Trails *	11	8.5	39.2
Number of Residents per Playground	3,750	3,157	1,862
Number of Residents per Recreation Center**	31,141	25,716	6,516

* Note: Includes trails in County parks

** Note: Assumes 25% of Camas population for Camas Community Center and Lacamas Lake Lodge

The PROS planning process assesses recreational needs and priorities for park facilities, active use areas and trails in Camas. The park assessment included a discussion of specific local needs with consideration given to the City's broader park system. Public input and information on park inventory conditions were also heavily relied upon in the planning process.

By considering the location, size, and the number of park facilities by type and use, along with community interests and priorities, the PROS Plan evaluates the existing and future demand for park and recreation

amenities and provides recommendations for future initiatives. The six-year Capital Facilities Plan, which identifies and prioritizes crucial upgrades, improvements, and expansions, is based on the needs assessment and the recreational interests expressed by residents.

The recreational interests of Camas residents were captured in the community survey and compared to regional, state and national trend data. Local support for and interest in trails for walking and biking, water access opportunities and kayaking align with recreation participation data from multiple sources.

DRAFT

Common Themes from Outreach

Parks & Open Space

- Maintenance of existing parks and open spaces remains a key priority
- Building new parks on undeveloped, city-owned parkland was one of the highest rated priorities
- Strong interest in expanding recreational options including the installation of a splash pad, bike skills/pump track, off leash dog areas, and tennis or pickleball courts
- Increase sport field capacity by improving field quality and adding lighting where appropriate

Trails

- Trail connectivity is important. Complete loops and circuits, and focus on trail connectivity
- Enhanced linkages between residential neighborhoods and downtown via pedestrian- and bicycle-friendly routes
- COVID accelerated trend toward higher trail usage

User Convenience & Support Amenities

- Upgrade / expand restrooms & parking
- Signage, wayfinding
- Communications

Conditions Assessment Snapshot

- Maintenance levels very good
- Improve consistency and standards for signage and furnishings
- Address ADA deficiencies over time
- Manage open space and invasive species removal

Site Name	Park Type	Park Site Average	Recreation Amenities										Site Amenities				Park Structures				Vegetation				ADA	
			Playgrounds	Paved Courts: Basketball	Paved Courts: Tennis	Volleyball	Soccer Fields	Baseball / Softball Field	Pathways / Trails	Off-Leash Area	Waterfront/Beach	Other Rec Element	Site Furnishings	Lighting (Y/N)	Signage	Parking Areas	Restrooms	Picnic Shelters	Boat Dock / Ramp	Concession Building	Turf	Park Trees	Landscaped Beds	Natural Areas	Compliance	
PARKS																										
Ash Creek Park	Undeveloped / Undefined	2.0																						2		
Coopers View Park	Neighborhood Park	1.1	1							1			1	N	1					1	2	1	1	1	1	
Crown Park	Community Park	2.0	2		2	2			2	2				3	N	2	2	2	2	2	1	2		2		
Dorothy Fox Park	Neighborhood Park	1.5	2	1.5				1		2				2	N	1.5	1	1			1	1	2		2	
Forest Home Park	Neighborhood Park	1.8	1	2					1	2				2	Y	2	2	2		2	2	2			2	
Goot Park	Community Park	1.4	1.5	1.5				1.5	1.5	1.5				1.5	N	1	1	1			1.5	1.5	1.5	1.5		
Grass Valley Park	Community Park	1.7	2	1	2.5				2	1.5				1	Y	2	1	2	1		2	1	2	2	2	
Green Mountain Neighborhood Park	Neighborhood Park	1.3	1	1		2				1.5				1	N	1.5	1	1	1		2	1			2	
Louis Bloch Park	Neighborhood Park	1.7	1	2				1.5						2	Y	1.5	2	1		2	2	1	2		2	
Oak Park	Neighborhood Park	1.8	1.5	2						2				2	N	1				2	1				3	
Benton Park	Neighborhood Park	2.1												1.5	N	1				3			2		3	
Klickitat Park	Neighborhood Park	1.9	1.5	2						2				1.5	N	2	1	1	1		2.5	2	3	2.5	3	
Lacamas Heights Park	Neighborhood Park	2.0													N						2				2	
SPECIAL FACILITY SITES																										
Fallen Leaf Lake Park	Regional Park	1.9				3							2		2	Y		1.5	locked	2					1	2
Fallen Leaf Softball Field	Special Facility	1.7							1	1				2	N	2	2.5	1.5			1	2	1		2	3
Prune Hill Sports Park	Community Park	1.4	2	1.5			1	1.5	2							1	1				1.5	1	1		1.5	
Heritage Park	Community Park	1.3	1							1.5		1.5		1		1	1	1.5	1	1		2	1	2	2	1
Leadbetter House	Undefined Park	-																								
Pitt Property	Undefined Park	1.2	1			2				1				1	Y	1	1				1	1			1	2
Pomaria House	Undefined Park	1.0																			1	1			1	
Wildlife League	Undefined Park	1.4	2							2				1	N	1			1		1	1			2	2
Baz River Front Park	Special Facility	2.0								3		1						2							2	
Skate Park	Special Facility	2.5								2				3	N	2	3	2		2		3	2	3	3	3
	Average:	1.67	1.46	1.61	2.25	2.25	1.17	1.50	1.75	-	1.63	-	1.68	-	1.44	1.53	1.45	1.29	1.50	1.67	1.81	1.31	1.95	1.80	2.15	

Open Space & Stewardship

- Over 835 acres City-owned open space

City Open Space Lands	Acreage
Larger Open Space Properties	657.78
Smaller Open Space Properties	38.95
Undeveloped Park Properties	139.05
TOTAL CITY OPEN SPACE	835.78

Non-City Open Space Lands	Acreage
Clark Co	891.10
HOA Parks	43.25
HOA Open Space	341.65
TOTAL NON-CITY OPEN SPACE	1,276.00

Open Space & STEWARDSHIP

Camas' open space, greenways and waterways are a critical component of the City's green infrastructure and play critical roles in supporting healthy, well-functioning ecosystems. These many benefits include maintaining and enhancing air and water quality, mitigating impacts of climate change, capturing stormwater runoff, and providing recreational and scenic opportunities to connect with nature that promote physical and mental well-being.

OPEN SPACE

The Camas community is fortunate to have retained several significant natural areas across the City. Over 700 acres of open space properties and natural lands are either owned or managed by the City, in coordination with the acreage of the developed park areas. These open space properties include forested lands, riparian corridors, wetlands, and steep slopes across 31 different sites. Together, the open space properties around Lacamas Lake comprise the most extensive and contiguous public open spaces, accounting for 49% of the open space in the City. Several other significant natural areas, ranging in size from 11 to 125 acres, also provide substantial forested areas. Smaller open space properties, under 10 acres in size, are distributed across Camas.

The open space classification distinguishes natural lands from parks developed for active recreation and other highly managed landscapes. Open space may refer to public properties that are exclusively natural areas or portions of larger parks that are managed as natural areas. These open space lands are managed to preserve, restore, and conserve ecosystem functions, water quality, native vegetation, and wildlife habitat. Open space properties are undeveloped, primarily left in their natural form, and are managed to retain or enhance natural or



66 | Camas PROS Plan 2022



”

Would like to see development of parking, picnic shelters, and water entry to Fallen Leaf Lake on opposite side of Lake Road.
- Online Open House participant

67

- System-wide Open Space Management Plan
- Urban Forestry Management Plan

Recreation & Events

- Top events: Hometown Holidays, Movies in the Park and Concerts in the Park
- Growing programming will require partnerships, marketing, space and resources

Segmentation of City Programs by Age Group

Program Category	Preschool	Youth	Teen	Adults	Senior
Education	●		●	●	●
Fitness		●	●	●	●
Outdoor Recreation		●			
Seniors					●
Special Events	●	●	●	●	●
Sports	●	●	●	●	●
Teens			●		
Youth		●			

CHAPTER 7

Recreation & EVENTS

“...my top priority “Outdoor adventure summer camps, including archery...” I would be very interested in these types of activities/camps not only for children and youth, but adults as well. I would love to participate in all of the activities that were listed, not only to learn more but also to meet more people in the community.
- Online Open House participant



The recreation facilities and services available within Camas are a major community asset and support the physical, mental and social health of community members. Recreation services are available through a range of public and private recreation, health and fitness providers and facilities. The City currently provides nearly all of its programming through partnerships and program contractors and does not provide a full suite of “traditional” recreation offerings, such as fitness and aquatics, due to limited facility space and staffing.

RECREATION MACROTRENDS

The following national and state data highlights some of the current trends in recreation and may frame future considerations in Camas’ recreation programs. Additional trend data are provided in Appendix E.

- Nationwide, eighty-two percent of U.S. adults believe that parks and recreation are essential.⁽¹⁾
- Seventy-seven percent of survey respondents indicate that having a high-quality park, playground, public open space or recreation center nearby is an important factor in deciding where they want to live.⁽²⁾
- Nearly all (93%) park and recreation agencies provide recreation programs and services. The top five most commonly offered programs include holiday or other special events (63%), educational programs (59%), group exercise (58%), fitness programs (58%), and day or summer camps (57%).⁽³⁾
- Youth aged 6 to 17 were a dive outside far less in 2019 than in previous years – the average

number of outings per child dropped 16% between 2012 and 2019.⁽⁴⁾

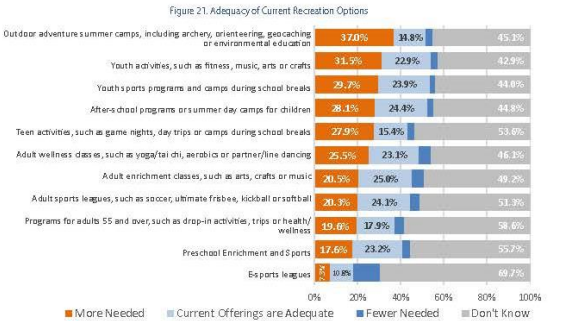
- Adults over the age of 65 showed significant change in inactivity rates in the six year period between 2014 and 2019, decreasing 6.8%. The rise in popularity of low impact exercise like aquatic exercise, swimming for fitness, yoga, and barre could be attributed to the decline of inactivity in this older age group.⁽⁵⁾
- Nearly all park and recreation providers in the U.S. experienced a decline in revenue in 2020 due to the COVID-19 pandemic. As early as May 2020, most providers had to close facilities temporarily in accordance with health and safety directives. Nearly half had also furloughed or laid off staff due to the funding and facility impacts of the pandemic.⁽⁵⁾

Sources:

- (1) American Engagement with Parks Survey
- (2) 2020 NRPA Agency Performance Review
- (3) 2020 State of the Industry Report
- (4) 2020 Outdoor Participation Report
- (5) 2020 Sport & Fitness Industry Association Sports, Fitness, And Leisure Activities Topline Participation Report

LOCAL PERSPECTIVES

The community survey conducted as part of this PROS Plan update asked respondents which types of recreation programs, classes and activities they would like to see more of. Notably, approximately half of respondents indicated that they did not know whether current offerings were adequate or not. Of those who expressed an opinion, more than half felt the City needed more outdoor adventure summer camps, teen activities, adult wellness classes and programs for adults over 55. Respondents under 34 years of age were more likely to feel the City needs more adult sports leagues, youth camps and after-school programs, preschool activities, and E-sports leagues.



DRAFT

- Community Center, Lodge and Scout Hall can accommodate programs, but do not function as traditional recreation centers

Operations & Maintenance

- 835 acres of open space
- 462 acres of open space added since 2010
- 11.9 miles of trails

CHAPTER 8

Near-term – increase field capacity by improving field quality.
- Stakeholder Focus Group participant

Operations & MAINTENANCE

The City of Camas aims to provide a quality park, recreation, natural open space, and trail system that is efficient to administer and cost-effective to maintain. The previous 2014 PROS Plan outlined a set of objectives for operations and maintenance to help achieve this goal. These included staff training, updated equipment, the exploration of additional resources through alternative staffing, a volunteer coordinator position and the investment in preventative maintenance and upgrades to park facilities to maximize long-term benefits. Camas has since purchased larger mowing equipment, added two FTE positions in the fiscal 2019/20 period and added a playground inspection program with funding for playground equipment repair. This park management effort is ongoing as resources are available but further progress



82 | Camas PROS Plan 2022

DRAFT

is needed. Park Operations staff have demonstrated their dedication to keeping parks functioning while the parkland system, city population, and park use has been expanding rapidly.

This chapter will provide data and assessments to help identify existing resource gaps and explore opportunities that may improve the capacity of park operations and maintenance.

BACKGROUND

The City of Camas has doubled its population since 2000 and has been very successful at implementing its plans for acquiring and preserving open space in the face of development pressures. The City has worked diligently to create its open space network with a connecting system of trails around Lacamas Lake and linked to regional trails. In the last decade alone the City has added over 316 acres of open space and over 146 acres for future parks. The ten years of successful acquisitions increased the 2010 park system size by over 75%.



Figure 24. Camas Parklands Acquisitions since 2010

Year	Acquisition Acreage		
	Park	Open Space	Total
2011	7.02	4.92	11.93
2012		48.92	48.92
2013		23.59	23.59
2014		5.82	5.82
2015	25.12		25.12
2016			0
2017			0
2018		75.57	75.57
2019		37.99	37.99
2020	58.55	119.66	178.22
2021	55.65		55.65
Subtotals	146.34	316.47	
	Total Acquisitions since 2010		462.81

DRAFT

Figure 25. Camas Park Maintenance Staffing Levels from 2010-2020

Metrics	2010 Actual	2020 Budget	2020 Actual
Parks Maintenance Expenditures	\$842,449	\$1,284,856	\$1,246,099
Parks Maintenance Staffing (FTEs)*	7.3	7.3	*

* No seasonal workers were hired in 2020 due to COVID
2010 FTE's combined full-time and seasonal equivalents

- Operations staff have been doing good job as system has grown, despite flat staffing levels

Operations & Maintenance

Maintenance Focus Areas

- Open Space
- Trails
- Sport Facilities
- Park Facilities
- System-wide Asset Management

Figure 27. NRPA Agency Performance Metrics Comparisons – Park & Rec Staffing

Metric	All Agencies	Pop. 20,000-49,999	Camas 2020
Park & Rec FTEs*	41.9	27.3	11.1
P&R FTEs per 1,000 Residents	8.1	8.9	0.4
Annual Operating Expenditures	\$4,342,495	\$2,885,847	\$1,771,272
Operating Expenditures per Capita	\$81.19	\$95.34	\$67.96
Operating Expenditures per Park Acre	\$7,160	\$8,522	\$1,665

**No seasonal FTEs for Camas in 2020 due to COVID*

Figure 30. Predictive Staffing Levels for Camas Park System

Annual Labor Expenditures per Acre	5-yr Average
Greenspace Labor Hours per Acre	21
Neighborhood Parks Labor Hours per Acre	152
Community Parks Labor Hours per Acre	111
Regional Parks Labor Hours per Acre	98

Goals

Functional Areas

- *Administrative*
- *Projects & Programs*
- *Policy*

Goal Themes

- *Welcoming For All*
- *Stewardship of Land, Parks & Programs*
- *Plan for & Fill Known System Gaps*
- *Organizational Excellence*

Framework Structure



Goals

- 4 Themes
- 23 Goals
- 62 Actions

PROJECTS & PROGRAMS



WELCOMING FOR ALL

Actively communicate and improve outreach and marketing to increase participation.

- Promote youth and senior scholarships.
- Keep park and trail facilities map updated.
- Pursue opportunities for alternative outreach and education to diverse groups, such as piloting youth parks stewardship programs and active communication through faith groups and non-profit organizations that work with minority and underserved communities.
- Pursue partnership opportunities with health care organizations to promote active recreation and wellness activities and events.



STEWARDSHIP OF LAND, PARKS & PROGRAMS

Improve Asset Management

- Improve the asset management system; to include parks facilities and amenities assets along with tree and plant assets.
- Update levels of service standards and develop a per acre maintenance budget.
- Develop an urban forestry program that articulates long-term strategy for tree protection, urban forestry management and education.
- Develop and implement improved natural area management practices to enhance ecological health and remove invasive plant species.
- Continue to build on playground equipment inspection program, prioritizing removal and replacement of unsafe/hazardous equipment and plan for a cycle of replacement based on equipment age and anticipated useful life.



PLAN FOR & FILL KNOWN SYSTEM GAPS

Design new parks, trails and amenities with environment, safety and accessibility in mind.

- Design and maintain parks and facilities to offer universal accessibility for residents of all physical abilities, skill levels and age; at a minimal in compliance with the Americans with Disabilities Act (ADA) Standards for Accessible Design.
- Identify and grow trail segments and trailhead amenities that can accommodate residents of all physical abilities.
- Standardize and install a more complete wayfinding and signage system.
- Incorporate sustainable development and low impact design practices into the design, planning and rehabilitation of new and existing parks, trails and facilities.



ORGANIZATIONAL EXCELLENCE

Continue building strong partnerships.

- Collaborate with local arts organizations, business, education institutions, other non-profits and jurisdictions to deliver on recreational programs and community events.
- Partner with user groups of specialized facilities, such as sport fields, off-leash areas, disc golf, skatepark, bike skills/pump track, etc. to continually improve programming and maintenance.

Opportunities for dogs to recreate with their human family.

- Partner with non-profits for more pet and animal and animal friendly events.
- Explore a partnership with DOGPAW to develop and manage off leash areas.

Enhance parks and trails amenities.

- Refresh existing legacy parks with new features to reflect current community desires, such as Crown Park.
- Prioritize permanent bathrooms at neighborhood parks and trailheads.
- Increase portable restrooms when permanent bathrooms are unavailable during the summer.
- Provide additional picnic shelters, tables and benches.
- Maximize the multiple-use aspects of critical areas, stormwater detention ponds, etc. with addition of public trails or viewing access and education of ecological value of the area.

Promote water access and safety.

- Collaborate with other agencies regionally in developing and operating parks and/or programs that access our bodies of water.
- Promote water safety through educational and marketing program in partnership with County and School Districts.
- Evaluate the north shores city-owned Legacy Lands properties to expand trails and water access points around Lacamas Lake.

Capital Planning & Implementation

Top Priority Areas

- Maintain What We Have
- Fill Gaps & Improve Trail Connections
- Develop & Improve Existing Parks

CHAPTER 10

Capital Planning & Implementation

KEY PROJECT RECOMMENDATIONS

The following is a summary of key project recommendations which will require commitment from the City and its residents for the continued support of a healthy park and recreation system that preserves and enhances the safety, livability and character of the community.

Trail Connections

Trail connections, including sidewalk and bike lanes improvements, are needed to help link destinations across the community. Acquire easements, corridors and parcels to create the comprehensive linkages for Camas' future trail system. Develop larger trails desired by the community, such as North shores of Lacamas, Mill Ditch, Lewis & Clark. Coordinate with the Transportation System Plan (and subsequent updates), as well as coordination with local subdivision and site development projects.

Park Design & Planning

Prepare an updated site master plan for Ash Creek Park and a new site plan for the flat, upper shelf of Ostensen Canyon Park. As development and maintenance funding allow, prepare site plans for Lacamas Heights, Green Mountain and Benton Park.

Sport Field Improvements

Conduct a city-wide assessment of sport fields to plan for drainage improvements and other field improvements, including turfing existing fields, installing lights to expand play seasons and the development of additional fields to accommodate demand.



DRAFT

Capital Planning & Implementation

Project Priority Exercise

Project Type		Site	Project	TOTAL – COMMISSION TALLY		
Type				H	M	L
A		Trail Corridors	Acquisition to link corridors	7	0	0
D		Crown Park	Park development per site master plan	7	0	0
P		Open Space Management Plan	Develop Plan	7	0	0
P		Urban Forestry Management Plan	Develop Plan	7	0	0
P/D		System-wide	Trails & Trailheads - planning and development	6	1	0
D		T-3 Trail - East segment of N. Shore Trail	Development of trail	6	0	0
P/D		Closing the Loop - Heritage and N. Shore trails	Planning and development	6	0	0
P		Mill Ditch Trail	Trail corridor access point & stairway planning	5	2	0
R		System-wide	Minor repair/replacement (parks amenities) projects	5	2	0
D		Forest Home Park	Picnic shelter, drainage, building replacement & minor upgrades	5	1	1
P		Skate Park	Redesign skate park and site	5	1	1
D		3rd Ave. Trailhead	Trailhead development	5	0	1

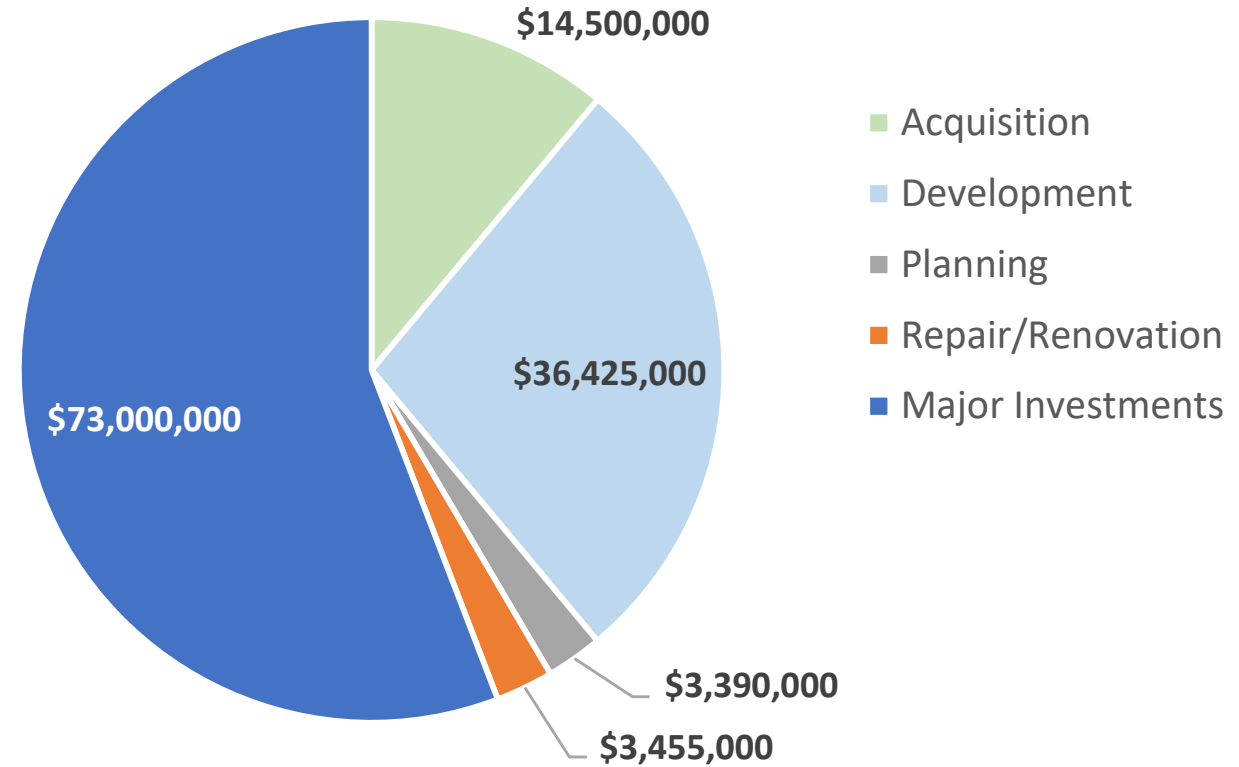
Project Type	
A	Acquisition
P	Master planning
D	Development - new
R	Replacement/Upgrade

Capital Planning & Implementation

Full project list is a 20+ year list of future improvements

Parks & Recreation Commission will review the CFP every two years as part of the biennial budget process

Major investment project ideas (e.g., Rec/Aquatic Center, Sports Complex, etc.) will require additional public and policy conversations



CFP Total: \$130,770,000

Capital Planning & Implementation

Implementation Considerations

- Park Impact Fees & Real Estate Excise Tax
- Public-Private Partnerships
- Grants & Appropriations
- Enhanced Local Funding
- Volunteer & Community-based Actions



Discussion

- *Questions / comments?*

Next Steps

- *Mar. 7th – Council Plan Adoption*

