

Exhibit C—Statement of Qualifications

Summary Form



GENERAL INFORMATION

Legal Name of Applicant Firm Johnston Architects, LLC

Mailing Address 3131 Western Avenue, Suite 510

City Seattle State WA Zip 98121

Contact Person Jack Chaffin Title Partner

Phone 208.992.4863 Fax _____

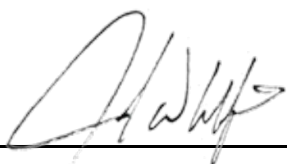
E-mail address jchaffin@johnstonarchitects.com

WA State Unified Business Identifier 602 179 399 (UBI)

Federal Tax Identification Number 784883308 (DUN)

CERTIFICATION

I certify that to the best of my knowledge the information contained in this Proposal is accurate and complete and that I have the legal authority to commit this firm to a contractual agreement. I realize the final funding for any service is based upon available funding levels and the approval of the City Council for the City of Camas.



Signature

06/23/2023

Date



CAMAS PUBLIC LIBRARY

Children's Learning Hive & General Building Updates
Project #G1029 / Statement of Qualifications

06.23.2023

JA / CAMAS PUBLIC LIBRARY / CHILDREN'S LEARNING HIVE + BUILDING UPDATES / RFQ #G1029



DUVALL LIBRARY / DUVALL WA

TABLE OF CONTENTS

Proposal Summary Form i

Cover Letter v

1. Similar Projects 1

2. Proposed Team. 11

3. Methodology & Approach. 19

4. Unique Qualifications 23

5. Subconsultants 26

6. References 28

COVER IMAGES WINTHROP LIBRARY / READ MORE ON PAGES 1-2



Camas Public Library
City of Camas

Attention: Connie Urquhart
curquhart@cityofcamas.us

RE: Children's Learning Hive & General Building Updates

June 23, 2023

Dear Connie & Members of the Selection Committee,

The City of Camas has a distinctly independent and vibrant culture that celebrates art, honors history, and leverages the proximity of nearby metropolitan areas while maintaining the best aspects of living in a small town in a magnificent natural setting. The Camas Public Library is a cornerstone of this place, and a vital resource for the area - not only providing access to knowledge and resources, but also acting as a gathering space where the community comes together to learn, explore, celebrate, and connect.

In recent years, changing service models for libraries have resulted in expanded programming that goes far beyond book storage, and the Camas Public Library along with the City of Camas has been proactive in planning for these changes. Nonetheless, the library faces a unique challenge inherent in its independence: the challenge of maintaining a healthy collection size while providing increased natural light, connections to the outdoors, and interactive play and learning spaces for children within an existing building envelope.

Johnston Architects thrives on challenges like these. Leveraging nearly 40 years of library design experience, we have a long history of working with community collaborators on small and large renovation projects to identify and prioritize interventions, refine space needs, align those needs with an overall vision, and shepherd that vision to reality while delivering the greatest value within cost constraints. We know that even small architectural interventions - like changing light fixtures - can have an outsized impact on the experience and function of a space, and we take pride in our ability to extend the lives of existing library buildings through changes that make them more accessible, inclusive, more responsive to the needs of the community, increasingly sustainable, and safer.

We also pay particular attention to the design of children's spaces within libraries. Prior to her career in architecture, Mona Johnston Zellers was an early childhood educator, and she has brought a deep commitment to design for early literacy and learning into her work as a library designer. Exceptional children's library spaces are many things at once: they include quiet zones for reading with caregivers or reducing sensory input for those with autism; they have lively spaces dedicated to open-ended and creative play; they have areas focused on early literacy activities and fine motor development; and they have spaces for messy experimentation and study. Importantly, they feel acoustically separate, yet visually connected to the rest of the library and, whenever possible, to the outdoors. These spaces allow parents and caregivers to participate in the children's learning experiences without feeling uncomfortable or in the way.

When we toured the Camas Public Library two weeks ago, we were able to visualize many opportunities for creating these kinds of exceptional children's spaces on the interior as well as in the courtyard space, which could be transformed into a place for outdoor story time or other outdoor activities through creative interventions. We look forward to the opportunity to discuss these possibilities with you.

We understand that the scope of work included in this renovation project is a direct reflection of the needs and aspirations of the community, and that Camas has already done significant outreach to clarify project goals. This work will continue to be a foundation for building positive momentum and public support for the renovation project going forward. JA is well-suited to support further community outreach and involvement as needed to ensure your project's success. With an experienced and collaborative team, a commitment to creating spaces for learning and connection, and a deep understanding of the unique character and attributes that distinguish Camas, we would welcome the opportunity to partner with the City, the library, and the community to help shape the next chapter of this unique place.

Please find information related to our qualifications, experience, and approach in the pages that follow. We look forward to meeting you and introducing our team.

Sincerely,

Jack Chaffin, AIA
Partner-in-Charge, Johnston Architects
jchaffin@johnstonarchitects.com

Mona Johnston Zellers, AIA
Design Partner, Johnston Architects
mzellers@johnstonarchitects.com

1. SIMILAR PROJECTS



[THIS PAGE INTENTIONALLY LEFT BLANK]

NORTH CENTRAL WASHINGTON LIBRARIES: WINTHROP LIBRARY
Completed 2022 / Winthrop WA



Inspiration / Inspired by the open-air agrarian buildings in the region, the design for the new 7,300 SF Winthrop Library includes broad overhangs, open roof trusses, and visible structure. Completing numerous daylighting and energy studies, the design team shifted window openings, doorways, overhangs, and a slatted wooden scrim to best control heat gain and glare during the Methow Valley’s arid summers.

Community Focus / The library was designed with extensive involvement by the community, including hundreds of requests and comments collected through a Hopes & Dreams charrette process led by JA + Prentiss Balance Wickline Architects. The new library serves as a community gathering space as well, with a large meeting room accessible after hours. It also includes specialized filters to improve air quality, making it a safe space for residents to go during the region’s smoky wildfire season and heat waves.



Cost & Schedule / The Winthrop Library is the result of unique public/private partnerships. The land was donated by the Town of Winthrop, and for six years volunteers at Friends of Winthrop Library (FOWL) led fundraising efforts. Over 1,000 private donors helped raise \$6.5 million and Washington State earmarked another \$2 million. Once completed, FOWL then gifted the library to the Town of Winthrop, and North Central Washington Libraries manages, maintains, and staffs the library. The design process ran from October 2019 through July 2020, with permitting, bidding, negotiation, and construction running from July 2020 through June 2022.

Winthrop Library Program Features

- Collection of over 20,000 materials
- Large community meeting room
- Children’s restroom “Treehouse” installation
- Study tables
- Computers with internet access
- Makerspace
- Window seat reading nooks
- Independent work spaces
- Lounge seating
- Fireplace

Recognition

- **2024** Braun Publishing, Library Architecture & Design
- **2023** WoodWorks National Wood Design Award, Wood in Public Buildings
- **2022** Seattle Daily Journal of Commerce Building of the Year, Finalist



NORTH CENTRAL WASHINGTON LIBRARIES:
WINTHROP LIBRARY CHILDREN’S AREA
Completed 2022 / Winthrop WA

Interior Design Tied to Place / The Winthrop Library in North Central Washington was designed to celebrate the region’s agrarian roots. Vertical larch planks clad the exterior and natural maple is used on the interior, alongside a palette of green, blue, and rust-colored materials inspired by the natural landscape of the Methow Valley.

Designed for All Children / For security and convenience, most modern libraries incorporate children’s restrooms in the children’s area and JA’s designers sought to make this one sculptural and interactive. Initially conceived of as an elevated “tree house” complete with steps or a ladder, designers quickly abandoned that idea due to its inaccessibility for children with different physical abilities. The final design evolved from an idea to wrap the silhouette of a tree canopy around this camouflaged restroom.

Materiality & Interaction / The lattice pattern, inspired by local flora and fauna and designed by Mona Johnston Zellers, was cut into plywood panels using a computer controlled router. The plywood was then set against green felt material to create a “tree canopy” for the space, and to provide extra acoustic absorption for the sometimes noisy children’s area. This motif became part of the library’s broader design language and was also applied to the maple wood reception desk at the library entry.

Cost & Schedule / Designing and fabricating this custom piece was more affordable than expected and avoided potential supply chain delays due to COVID. The cost of the plywood panels and custom-cut design was only \$7,000 and took just three short weeks.

Winthrop Library Children’s Area Design Features

- Single-occupancy, secure, child-sized restroom
- Soft & comfortable reading nooks
- Custom regional-inspired tree canopy design
- Puzzle pieces for interactive play
- Felt panels offer acoustic absorption
- Designed for accessibility for children with limited mobility

CLIENT REFERENCE

Jill Sheley Executive Director
Friends of the Winthrop Library
425.830.7200 / jill@s2advisors.com



SNO-ISLE LIBRARIES: EDMONDS LIBRARY
Completion Fall 2023 / Edmonds WA

Extensive Building Damage / After a burst water main caused catastrophic flooding to this popular community library, Sno-Isle Libraries used the opportunity to perform a much-needed update to the entire facility.

Reimagined Library / The reimagined Edmonds Library will provide patrons with increased access to technology and more diverse seating and gathering spaces, improving user experience and increasing equitable access to library services for the community.

Cost & Schedule / Working closely with our frequent collaborators at DCW Cost Management, the water remediation and renovation of Edmonds Library was estimated at \$2,002,152. Sno-Isle Libraries received four bids from General Contractors which averaged \$2,078.397, representing a

deviation from the cost estimate by less than 4%. Below is the project’s extremely compressed schedule, a mere 48 weeks:

Predesign & Initial Cost Estimate:	10 weeks
Schematic, Bidding & Permitting:	10 weeks
Bidding, Negotiation & Award:	6 weeks
Construction & Closeout:	22 weeks

- Edmonds Library Program Features**
- Focus and study rooms
 - Community gathering spaces
 - Conference and meeting rooms
 - Stack layouts
 - Staff support spaces
 - Interactive children’s area
 - Diverse seating and gathering spaces



SNO-ISLE LIBRARIES: EDMONDS LIBRARY CHILDREN'S AREA
Completion Fall 2023 / Edmonds WA

Blank Slate / As part of a full-building renovation of the water-damaged Edmonds Library, Sno-Isle Libraries tasked JA designers with a complete reimagining of the children’s area, which was overdue for improvements and updates. JA used our team’s experience in early childhood education and custom fabrication to design a unique sculptural element that provides opportunities for exploration and learning.

Children’s Active Play Element / Inspired by the rocky shores of Edmonds, this installation emulates a sea-smoothed pebble, providing a child-sized shelter within the larger library. Designed for imaginative play, children get to choose how they interact with this element. They can climb into it to play peek-a-boo or climb inside and use it as a quiet reading nook on less busy days. Around the nook is a soft, sculpted landscape to climb, sit, or play on.

Cost & Schedule / JA’s experience in designing custom installations, coupled with our team’s unique understanding of fabrication technology, allowed us to design this element to be cost-effective for Sno-Isle Libraries. JA produced digital

fabrication files to be used by the fabricator to produce the final product, which was especially beneficial when the contractor’s initial estimate was twice as much as our estimate. Leveraging our existing relationship with fabricators and preparing the design and documentation for this piece meant we were able to bring the installation back in line with our initial estimate.

Edmonds Library Children’s Area Design Features

- Designed to spark interaction and early learning
- Design for active play or quiet reading hideaway
- Allows for accessibility by children with limited mobility
- Soft cushions and climbing area
- Lights up at night and appears as an artistic sculpture
- Pebble shaped installation & furnishings inspired by nature

CLIENT REFERENCE

R.D. Burley
Assistant Director of Facilities, Safety & Security
Sno-Isle Libraries
360.913.1606 / rburley@sno-isle.org

FORT VANCOUVER REGIONAL LIBRARIES: OPERATIONS CENTER
Completion Fall 2023 / Vancouver WA

Needs Assessment / In June of 2021, JA kicked off the programming and design of a tenant improvement for the relocation of the FVRL Operations Center. Our team applied findings from a 2019 needs assessment performed by JA to inform layout decisions to accommodate the organization’s 10 departments.

Workplace Reimagined / The 20,000 SF program includes open workspaces, private offices, and a diverse mix of collaboration spaces. Conference rooms in a range of sizes, as well as “work booths” offer a mix of spaces for FVRL staff to meet one on one, in small teams, or in large groups. This new workplace keeps employee well-being in mind, offering a private “mother’s room,” quiet rooms and private spaces for phone calls, comfortable break room, and a welcoming entry lounge.

Supporting the Library District / The building’s facilities workshop includes a wood shop, vehicle fleet storage, and loading dock to support the transfer of media, supplies, and program materials between the district’s 15 libraries.

Cost & Schedule / Once the General Contractor was selected through a public bid process, a value engineering exercise was done with the Owner, Contractor, and Architect to get the construction cost in line with the Owner’s budget while still maintaining the design vision. Part of the value engineering process included evaluating substitutions that could reduce long lead times and allow the project to be completed on schedule. Completion of the project is anticipated in early August 2023.

- Program Features**
- Open workplace
 - Collaboration spaces
 - Private offices
 - Conference rooms
 - Work booths
 - Lactation room
 - Focus rooms
 - Break room
 - Facilities Workshop
 - Wood shop
 - Vehicle fleet storage
 - Loading dock

CLIENT REFERENCE

Dave Josephson
Facilities & Fleet Director, Fort Vancouver Regional Library
360.906.4942 / djosephson@fvrl.org



FORT VANCOUVER REGIONAL LIBRARIES: CASCADE PARK LIBRARY
Completed 2009 / Vancouver WA



The Setting / Nestled between a second-growth forest and a community center, the 25,000 SF Cascade Park Library in Vancouver provides an inviting living room for patrons. JA worked in collaboration with Lango Hansen to design this new facility with the goal of creating an enduring model of environmentally-responsible civic architecture, and a public hub for this rapidly growing community.

Connection / Special attention was paid to the library’s connection with the neighboring community and senior center, which includes an indoor pool and fitness track. The library is a short walk from the post office, grocery store, cafes, and other community amenities.

Design Intention / Within this glassy shelter of the Cascade Park Library, life cycle learning is key. Movement spaces are linked with words and images in the children’s area. New modes of communication are explored in the juvenile and teen zones. Innovative accommodations are made for adult education.

Sustainability / The library’s footprint is shaped to preserve significant tree stands, and its walls are placed to frame views while screening cars, parking lots, and future development. Site-milled Douglas fir is used throughout the space, as well as under-floor displacement systems for heating and cooling, extensive daylighting, and on-site storm-water management with rain gardens. A national model for cost recovery, the library measured 128% cost recovery within the first year of operation.

Repeat Collaborations / JA is excited to continue our relationship with Fort Vancouver Regional Libraries (FVRL) and is currently completing construction of the district’s new Operations Center.

Cost & Schedule / This project kicked off in early 2007 and was completed in mid-2009, within the budget and schedule set forth by FVRL.

- Cascade Park Library Program Features**
- Children’s area with “parent perch”
 - Teen zone
 - Community room
 - Computer area

CLIENT REFERENCE

Dave Miletich Former Recreation Manager,
Vancouver Parks & Recreation
Current Director, City of Hillsboro Parks & Recreation
360.635.2661 / dave.miletich@hillsboro-oregon.gov



CLACKAMAS COUNTY: OAK LODGE LIBRARY & COMMUNITY CENTER
Construction Beginning Fall 2023 / Oak Grove OR



Experts in Collaboration / JA is working with long-time collaborator Opsis Architecture, helping Clackamas County provide a new community center and library in Oak Grove OR. The community has been under-served with insufficient libraries, an issue the County must remedy immediately.

Historic Adaptive Reuse / The old Concord School in Oak Grove is being creatively adapted into Oak Lodge Community Center. A new library building is being added to the site, creating a civic campus for residents of Clackamas County.

Assessing the Options / Numerous design solutions were explored with input from the community, including combined library and community center facilities and separate buildings that shared a civic campus. Studies ranged from 47,800 SF to 73,300 SF.

Moving Forward / The preferred project program, which will kick off construction in August 2023, includes a separate 15,300 SF library building directly adjacent to

the historic Concord School, which will be renovated to house the new community center program.

Cost & Schedule / Public outreach for this project began in 2019 and Clackamas County elected to use the CM/GC delivery model for this project. The General Contractor developed a detailed construction schedule that runs from August 2023 through November 2024. The GMP was established at \$15.6 million, and while the budget has fluctuated over time with changes to scope and economic conditions throughout the COVID-19 pandemic, no significant value engineering has been required and the team is confident it will be completed on budget and schedule.

- Oak Lodge Program Features & Special Conditions**
- Gallery for rotating art exhibits
 - Community library needs assessment
 - Facilities assessment with multiple design studies
 - Multiple municipality & community stakeholder groups
 - Mix of program & flexible space

CLACKAMAS COUNTY: GLADSTONE LIBRARY
In Construction / Gladstone OR



Long Term Library Planning / Designed by JA and Opsis Architecture, in partnership with Clackamas County, North Clackamas Parks & Recreation District (NCPRD), and the City of Gladstone, this project brings a much-needed library to an under-served community. Master planning for this project began in mid-2019 and the project broke ground in June 2023.

Community Outreach / Robust community outreach was led by JLA Public Involvement with specific goals of reaching a diverse population. This was accomplished through public meeting facilitation, technical assessment, needs assessment/programming, site evaluation, conceptual designs, and refinement of a preferred alternative. This process culminated in cost estimating, operational cost analysis, and final presentation renderings.

CLIENT REFERENCE

Mitzi Olson
Library Manager for Oak Lodge & Gladstone Libraries
Clackamas County Dept. of Transportation & Development
503.655.8570 / molson@clackamas.us

Sustainability / The project is being designed to LEED standards, making use of passive solar heating and daylighting, as well as natural ventilation. The design team is researching the use of mass timber (CLT or DLT) construction.

Cost & Schedule / Using a CM/GC delivery model for this library, Clackamas County and their selected General Contractor have agreed on a GMP of \$7 million and anticipate the construction to run from June 2023 through May 2024. Adjustments to the structural system and other elements early in Schematic Design helped control costs and keep the project in budget. Early pricing exercises also allowed the team to adapt to the rapidly-changing economic conditions of 2020-2022 without sacrificing scope.



COYOTE CENTRAL
Completed 2015 / Seattle WA

Tween Art School / The adaptive reuse of a historic building, originally a corner grocer and most recently a chocolate factory, in Seattle’s Central District gave this nonprofit arts school for elementary and middle school students its first permanent home.

Phased Construction / This project was phased and managed like a design/build project in order to meet the financial needs and fundraising abilities of the organization. JA worked closely with the client to ensure the project management process was flexible and accounted for necessary funding-related pauses in the construction process.

Long Term Client Connection / JA continues to support Coyote Central with grant applications and permitting documentation as they improve the building’s accessibility. Additionally, our team provided permitting support

for a new 4,000 SF location in Lake City, Coyote North, which opened in 2019.

Cost & Schedule / This project included extensive pro bono work by both JA and the General Contractor, allowing the costs to come in within the nonprofit client’s budgetary needs. Construction ran from fall 2010 through early 2011.

Coyote Central Program Features

- Multi-purpose studio spaces
- Work yard for construction and welding
- Administrative offices
- Kitchen for cooking classes

CLIENT REFERENCE

Claudia Stelle
Executive Director, Retired
206.323.7276
claudia.stelle@gmail.com



CITY OF AUBURN: AUBURN ARTS & CULTURAL CENTER
Completion Summer 2023 / Auburn WA



Adaptive Reuse / The community of Auburn came together to revitalize their historic 1939 Post Office into a space to support community arts and culture. The project team found inspiration in the 4,500 SF building’s original structure.

Demolition Influenced Design / Demolition of the interior walls, bulky column wraps, and suspended plaster ceiling have resulted in an open space with high ceilings, allowing ample natural light deep into the interior. However, additional demolition in early 2021 revealed quite a surprise for our team—black tar painted walls—resulting in an evolution of the design. Designers opted to further open up the space to its exposed structure, creating a more unrestrained feeling in the galleries.

Cost & Schedule / This phased project has spanned seven years. Budget and schedule were driven by the client, who used various grants to perform building improvements separately, as allowed. Due to

these irregular funding sources, the construction schedule has lengthened but will complete construction in the next few weeks.

Program Features & Special Conditions

- Gallery
- Artist-in-residence studio
- Retail space
- Cafe
- Classrooms for art classes
- Performance rehearsal space
- Repurposes original marble wainscot
- Exposed original structural elements
- Building envelope, roof & window repairs

CLIENT REFERENCE

Jamie Kelly Parks & Planning Development Manager
City of Auburn Parks & Recreation
503.931.4011
jwkelly@auburnwa.gov



2. PROPOSED TEAM

[THIS PAGE INTENTIONALLY LEFT BLANK]

ABOUT JOHNSTON ARCHITECTS

WOMEN-OWNED NORTHWEST FIRM

Johnston Architects was born from a desire to create exceptional built spaces through intelligent, conscientious, and sustainable design. Co-founded in Seattle by Mary and Ray Johnston in 1991, JA has emerged as a premier Pacific Northwest design firm and an innovative leader in firm practice.

JA is a Women-Owned Small Business and was recognized as one of Washington’s Best Companies to Work For in 2021. Our firm is a direct reflection of our values and we are dedicated to promoting diverse voices not only through our work, but in our workplace. This is JA by the numbers:

- JA’s staff is 2/3 women
- JA’s Partnership is 67% women
- 83% of JA’s Principals are women

Johnston Architects is committed to social responsibility and equity, and is part of the JUST program, a voluntary disclosure

tool used to measure our social justice initiatives and environmental impact. Since becoming a JUST organization in 2018 and renewing every two years, JA has used this program as a gauge to improve the wellbeing of our employees, strengthen our communities, and evolve our business practices.

ARCHITECTURE, INTERIOR DESIGN & SPACE PLANNING

Today, JA is a 29-person, full service architectural, interior design, and planning firm with an intentionally diverse portfolio of work. Our projects include:

- Public libraries
- Educational spaces
- Community centers
- Animal care & welfare projects
- Renovations & tenant improvements
- Commercial offices
- Multifamily, single family & mixed-use housing



Our architects and interior designers regularly perform building assessments, space planning, programming, fit tests, accessibility reviews, and design extensive renovations of existing buildings for local municipalities and public agencies. Our firm’s 30+ years of experience in adapting and repurposing existing buildings of every type, scale, and era will allow us to support the Camas Public Library’s pursuit to enhance and improve the building.

WE ARE DEDICATED TO LIBRARY DESIGN EXCELLENCE

After more than 30 years working in the Northwest, JA leaders have in-depth experience building strong working relationships with our region’s public agencies, including State, County, City, and numerous library systems. We belong to multiple public works rosters, providing architectural and interior design services for a mix of organizations and communities.

JA has worked on nearly 40 library projects including, most recently a complete renovation of the Edmonds Library, through our on-call contract with Sno-Isle Libraries (Page 3), and our team holds invaluable institutional knowledge and understanding of today’s progressive library programming practices.

JA Founding Partner Ray Johnston holds four decades of experience designing and renovating libraries. He continues to pass his knowledge on to JA’s established and emerging library designers, giving our team unique insight into the ways libraries of different eras, conditions, size, and use can be augmented to suit the needs of today’s patrons and ensure future flexibility as space requirements, community needs, and technology change over time.

In recent years, JA Partner Mona Johnston Zellers has added to the discourse around innovative library design and design for early literacy through speaking engagements at the Library Journal Design Institute. Mona recent work includes five library projects around the Pacific Northwest, and this experience has given her unique insight into current trends and innovations in library design.

OUR TEAM COMMITMENTS

Johnston Architects’ leadership team meets weekly to discuss current and upcoming project schedules to ensure all of our teams are well supported and our designers and architects are assigned to a mix of project types and scales that align well with their skills and abilities. The team members we are proposing for the Camas Public Library improvements are actively designing libraries and library renovations and their current project schedules align well with the start date of the Camas Public Library improvements.



RAY JOHNSTON FAIA
Consulting Partner

Ray and his partner Mary founded JA on the belief that the most successful design projects stem from effective communication, technical expertise, and attention to detail. Beginning his career designing accessibility improvements to the Seattle Public Library's Carnegie branches in the 1980s, Ray has now worked on nearly 40 library projects and lends his expertise as Consulting Partner on many of our library projects. Ray has built his career working with municipalities large and small, designing spaces for communities of every kind and filling the needs of individuals from every walk of life and demographic. He is recognized nationally for his contributions to public spaces, with an inclusive and holistic approach, believing in collaboration among disciplines and the synthesis of program, budget, client desires, materials, and site.

CREDENTIALS

Master of Architecture
University of Washington
BA, Set Design Whitman College
Registered Architect: WA, CO, OR, AK, CA, MT, NV, AZ, HI, BC
Years Experience 45

LEADERSHIP

2022 [Presenter & Panelist / Library Journal Design Institute Conference](#)
2021 [Seattle Business Magazine / Washington's 100 Best Companies to Work For](#)
2021 Lecturer & Studio Instructor / University of Washington, College of Built Environments
2020 [Presenter & Panelist / Library Journal Design Institute Conference](#)
2014 The Seattle Times / Little Free Libraries
2008 Panelist / World Affairs Council, Library Tour
2007 Panelist / Washington DC Neighborhood Library Forum
2004 Seattle Magazine / The Power List, 25 Influential People

LIBRARY DESIGN AWARDS

2023 WoodWorks Wood Design National Award, Wood in Public Buildings / Winthrop Library
2022 Seattle Daily Journal of Commerce Building of the Year, Finalist / Winthrop Library
2015 AIA Washington Civic Design Merit Award / Duvall Library
2014 AIA Washington Civic Design Award / Bellevue Library Expansion
2007 AIA Washington Civic Design Award / South Park Library
2002 AIA Northwest & Pacific Region Award / Maple Valley Library
2001 AIA National Award / Maple Valley Library
2001 AIA Seattle Honor Award / Maple Valley Library
2001 National Wood Council Honor Award / Maple Valley Library
2000 AIA Washington Civic Design Award / King County Library System
1990 President's Award / Seattle Public Library, Carnegie Libraries

LIST OF RELEVANT EXPERIENCE

Sno-Isle Libraries
● Freeland Library
● Sno-Isle Library Service Center
● Snohomish Carnegie Upgrade Study

Seattle Public Library

- Capitol Hill Library
- Columbia City Carnegie Upgrades
- Douglass-Truth Library Upgrades
- Fremont Carnegie Upgrades
- Green Lake Carnegie Upgrades
- Madrona Carnegie Upgrades
- South Park Library
- University Carnegie Upgrades
- West Seattle Carnegie Upgrades

King County Library System

- Bellevue Library Expansion
- Duvall Library
- Maple Valley Library
- Newport Way Library Expansion
- Richmond Beach Library Renovation
- Sammamish Library
- Shoreline Library Renovation

Fort Vancouver Regional Library

- Cascade Park Library & Community Center
- Service Center Needs Assessment

Additional Libraries

- Winthrop Library / Winthrop WA
- Blaine Library / Blaine WA
- Bozeman Public Library / Bozeman MT
- Corvallis Library Expansion / Corvallis OR
- Gladstone Library / Gladstone OR
- Oak Lodge Library / Oak Grove OR
- Powell Library Renovation / Powell WY
- S'Klallam House of Knowledge Little Boston Library / Kingston WA
- State of Washington Talking Book & Braille Library / Seattle WA
- Yolo County Law Library Space Planning / Woodland CA



MONA JOHNSTON ZELLERS AIA
Design Partner / Architect

Mona's reputation as a design leader is reflected in her diverse project experience, which includes designing additions, renovations, and new buildings for public and private clients. Her work includes public libraries and community centers, learning spaces, multifamily housing, as well as infrastructure and art installations. Prior to pursuing a career in architecture, Mona worked as an early child educator, which informs her design of community-focused spaces today. Mona is recognized for her thoughtful design approach and curious nature, making her an ideal teammate on integrated projects bringing together diverse groups working toward a common goal. Mona leads JA's Design Excellence program, an internal design review process that occurs at set milestones for every project, from the smallest building update to the largest library, and everything in between.

CREDENTIALS

Master of Architecture
University of Washington
BA, Biology Colorado College
Registered Architect WA
Years Experience 13

LEADERSHIP

2023 [Fostering a Supportive Community for Women Architects / Architect Magazine](#)
2022 [AIA Seattle Young Architects' Award](#)
2022 [Presenter & Panelist / Library Journal Design Institute Conference](#)
2021 [What Women Need Business Leaders to Know Right Now / Puget Sound Business Journal](#)
2020 [Presenter & Panelist / Library Journal Design Institute Conference](#)
2019 Panelist / Seattle Architecture Foundation Model Exhibit: Symbiosis
2017 AIA National Associate Award

ADDITIONAL EXPERIENCE

- On Call: City of Seattle, City Hall Exterior Lighting / Seattle WA
- Maple Valley Legacy Site / Maple Valley WA
- On Call: City of Seattle TEPS Interpretive Center / Seattle WA
- Health Sciences Building, Central Washington University* / Ellensburg WA
- Yolo County Law Library Space Planning / Woodland CA

PARTIAL LIST OF RELEVANT EXPERIENCE

Sno-Isle Libraries: Edmonds Library Renovation & Children's Area Installation / Edmonds WA JA worked with library staff to identify the most ideal program layout, including a unique children's active play element designed to spark imagination and a love of learning. The reimagined 18,000 SF facility will provide patrons with increased access to technology and more diverse seating and gathering spaces, improving user experience and increasing equitable access to library services for the community.

North Central Washington Libraries: Winthrop Library & Children's Area Installation / Winthrop WA This library opened to the public in June 2022 and was developed in close collaboration with the community. The library honors the region's agrarian history while using modern materials and forms. JA designed a custom-fabricated, interactive installation for the children's area which doubles as a concealed kids-only restroom.

Sno-Isle Libraries: Mill Creek Library Renovation / Mill Creek WA As part of our On-Call Contract with Sno-Isle Libraries, JA is supporting the district with repairs and improvements to the Mill Creek Library. Built in the early 1990s, the building is challenged with failing subflooring, structural concerns, and restrooms that are no longer in compliance with modern accessibility codes. As part of these improvements,

more reading, study, and technology spaces will be provided by reducing the library's collection and shifting to lower stacks, which increase accessibility and improve sight-lines throughout the 5,000 SF space.

Clackamas County: Oak Lodge Library & Community Center / Oak Grove OR Partnering with Opsis Architecture on this collaboration, JA is working with the local citizens and municipalities to remodel and add to a historic elementary school as it is transformed into a 50,000 SF community center with a new 13,600 SF library.

Clackamas County: Gladstone Library / Gladstone OR JA is designing a new library for this small Portland suburb. Multiple program studies resulted in a preferred, 6,000 SF scheme that includes a community meeting room, teen area, and a children's library that opens to a secure interior courtyard.

Whatcom County Library System: Blaine Library Conceptual Design / Blaine WA Collaborating with King Architecture, the design team implemented an inclusive workshop process, ensuring that community members were involved in the design, which takes cues from its maritime setting. Sustainable strategies explored include extensive solar arrays, daylighting controls, and the harvesting of rainwater and runoff on site to support landscaping and a rain garden.

*Project completed at a previous firm



JACK CHAFFIN AIA
Partner-in-Charge / Architect

Jack has over 25 years of experience on projects of every size and scale, with an emphasis on upgrades and renovations for libraries, community centers, education facilities, public buildings, and institutions. Jack takes the helm on numerous types of work, including upgrades and improvements to facilities for Sno-Isle Libraries, City of Seattle, and Seattle Center, as well as new construction of community-focused spaces. Jack is a leader in Building Information Modeling, with over 15 years of integrated design experience. He applies technological advances to improve sustainability, passive heating and cooling, daylighting, and energy consumption in our projects. His balance of excellent communication skills, consistent attention to project leadership, and coordination of technically-complex issues is invaluable.

CREDENTIALS

Master of Architecture
Morgan State University
BA, English & Religious Studies
Kenyon College
Registered Architect WA
Years Experience 27

LEADERSHIP

2021 - 22 Studio Instructor / University of Washington, College of Built Environments
2022 Speaker / CSI Mt Rainier Chapter, The Oak Tree Pavilion
2020 Panelist & Presenter / Library Journal Design Institute Conference

ADDITIONAL EXPERIENCE

- City of Seattle: On-Call Contract, Multiple Facilities / Seattle WA
- Lake Wilderness Clubhouse / Maple Valley WA
- Old Works Clubhouse Renovation & Addition / Anaconda MT
- Redmond Senior & Community Center / Redmond WA
- Georgetown University: Law Center Renovation* / Washington DC
- College of William & Mary: Law Library Renovation* / Williamsburg VA
- University of Maryland: Law School & Library Renovation & Addition* / Baltimore MD

PARTIAL LIST OF RELEVANT EXPERIENCE

Sno-Isle Libraries: Edmonds Library Renovation & Children’s Area Installation / Edmonds WA JA worked with library staff to identify the most ideal program layout, including a unique children’s active play element designed to spark imagination and a love of learning. The reimagined 18,000 SF facility will provide patrons with increased access to technology and more diverse seating and gathering spaces, improving user experience and increasing equitable access to library services for the community.

North Central Washington Libraries: Winthrop Library & Children’s Area Installation / Winthrop WA This library opened to the public in June 2022 and was developed in close collaboration with the community. The library honors the region’s agrarian history while using modern materials and forms. JA designed a custom-fabricated, interactive installation for the children’s area which doubles as a concealed kids-only restroom.

Sno-Isle Libraries: Mill Creek Library Renovation / Mill Creek WA As part of our On-Call Contract with Sno-Isle Libraries, JA is supporting the district with repairs and improvements to the Mill Creek Library. Built in the early 1990s, the building is challenged with failing subflooring, structural concerns, and restrooms that are no longer in compliance with modern accessibility

codes. As part of these improvements, more reading, study, and technology spaces will be provided by reducing the library’s collection and shifting to lower stacks, which increase accessibility and improve sight-lines throughout the 5,000 SF space.

Whatcom County Library System: Blaine Library Conceptual Design / Blaine WA Collaborating with King Architecture, the design team implemented an inclusive workshop process, ensuring that community members were involved in the design, which takes cues from its maritime setting. Sustainable strategies explored include extensive solar arrays, daylighting controls, and the harvesting of rainwater and runoff on site to support landscaping and a rain garden.

Seattle City Light: Seattle Municipal Tower / Seattle WA This four-floor, 80,000 SF renovation in the Seattle Municipal Tower will create a collaborative, flexible new office for one of the region’s largest utilities. JA’s team developed multiple design concepts for the client to accommodate approximately 400 employees in a mix of private offices, cubical pods, bench/hotel seating, and cafe-style workspaces.

*Project completed at a previous firm



MAGGIE CIACCIO RA, LEED GREEN ASSOCIATE
Associate / Project Manager

Maggie is a thorough and detail-oriented architect and project manager, applying her leadership skills and technology-based organizational processes to ensure project schedules and documentation are orderly and aligned. Her experience includes libraries and community spaces, education facilities, commercial offices, mixed-use developments, and single family homes. Maggie holds nearly a decade of professional experience in architecture and design, working in the Washington DC area before relocating to Washington State in 2016. Highly skilled in project management, space programming, and design, Maggie’s technical expertise ensures fluid and efficient work processes and detailed drawings, which provide our cost consultants with enough data to provide accurate estimates and contractors with a streamlined construction process.

CREDENTIALS

Bachelor of Architecture
Virginia Tech
College of Engineering & Architecture, Bilateral Exchange
University College Dublin
Registered Architect IL
Years Experience 9

LEADERSHIP

2019 - 2021 Member / Design Build Institute of America
2017 International Interior Design Association Award
2014 Pella Prize for Excellence in Undergraduate Thesis
2014 AIA Emerging Professionals Thesis Showcase
2011 Virginia Educational Facility Planners, Honorable Mention

ADDITIONAL EXPERIENCE

- Gravely Lake Residence / Lakewood WA
- Lego Lock Residence / Dane County WI
- Horizon House* / Seattle WA
- Sawhorse Revolution* / Seattle WA
- UC San Diego, Nuevo East* / San Diego CA

PARTIAL LIST OF RELEVANT EXPERIENCE

Sno-Isle Libraries: Edmonds Library Renovation & Children’s Area Installation / Edmonds WA JA worked with library staff to identify the most ideal program layout, including a unique children’s active play element designed to spark imagination and a love of learning. The reimagined 18,000 SF facility will provide patrons with increased access to technology and more diverse seating and gathering spaces, improving user experience and increasing equitable access to library services for the community.

The Bush School Addition* / Seattle WA Maggie led schematic design of an 18,000 SF classroom and multi-purpose building as an addition to this school campus. Extensive research into zoning and code requirements informed the siting and design of this contemporary facility.

Centerbridge Tenant Improvement* / New York NY Maggie was an integral team member for this 20,000 SF office renovation in NYC’s landmarked Seagram Building. This included digital models, presentation drawings and renderings, extensive consultant coordination, design of furniture systems, accessories, and environmental graphics, and construction administration.

Laurelhurst Renovation & Addition / Seattle WA An extensive remodel and addition of this home along the shores of Lake Washington is adding 2,650 SF of living space by expanding the first floor and adding a second story, as well as a private pool. Currently under construction, the 5 bedroom/5 bathroom home will total 4,400 SF and feature views of the lake. JA designers are salvaging some of the home’s ashlar stone and contrasting it with vertical wood siding on the addition.

Lego Lock Residence / Dane County WI Designed to take advantage of a steeply sloped site, this 2,800 SF home is designed for durability and thermal performance as well as beauty. Using Insulated Concrete Forms (ICF) like Lego blocks, triple pane windows, and a concrete structural system will help control energy use during Wisconsin’s seasonal swings. A double-height enclosed “porch” connects the indoors with exterior living space.

Press Block* / Portland OR This new mixed-use development on the MAX light rail line in the rapidly transforming Goose Hollow neighborhood. The 340 residential units including studios, one- and two-bedrooms, and live/work spaces in a 24-story tower. The development also includes 22,000 SF of creative office space, 14,000 SF of retail, and 469 underground parking stalls.

*Project completed at a previous firm



LINA BAKER NCIDQ
Associate / Senior Interior Designer

Lina brings to this project more than 16 years of experience as an interior designer with a focus on remodels and tenant improvements for community, healthcare, housing, technology, and financial clients. She strengthens her community and commercial designs by infusing concepts from housing and hospitality projects to produce spaces that are welcoming and programmatically flexible while tied to the ethos and values of the clients and end users. She is experienced in programming, client care, project management, and all phases of the design and construction process. She holds a keen interest in the technical aspects of design, with emphasis on clear and precise construction detailing, as well as furnishings, fixtures, and equipment selection and drawing documentation.

CREDENTIALS

BS, Interior Design
Colorado State University
NCIDQ Certified
Years Experience 16

ADDITIONAL EXPERIENCE

- Coffman Engineers Tenant Improvement* / Seattle WA
- Verizon Wireless Operations Tenant Improvement* / Southlake TX
- Microsoft Tenant Improvements* / Multiple Locations
- Wells Fargo Administrative Office Tenant Improvement / Spokane WA
- Leeward Mixed-Use* / Seattle WA
- Modera Northgate Mixed-Use* / Seattle WA
- Modera Shoreline Mixed-Use* / Shoreline WA
- Block 56 High-rise* / Seattle WA
- Convergence Mixed-Use* / Shoreline WA
- Stadium Place North Mixed-Use* / Seattle WA
- Murano Senior Living High-Rise* / Seattle WA

PARTIAL LIST OF RELEVANT EXPERIENCE

Sno-Isle Libraries: Edmonds Library Renovation & Children's Area Installation / Edmonds WA JA worked with library staff to identify the most ideal program layout, including a unique children's active play element designed to spark imagination and a love of learning. The reimagined 18,000 SF facility will provide patrons with increased access to technology and more diverse seating and gathering spaces, improving user experience and increasing equitable access to library services for the community.

Sno-Isle Libraries: Mill Creek Library Renovation / Mill Creek WA As part of our On-Call Contract with Sno-Isle Libraries, JA is supporting the district with repairs and improvements to the Mill Creek Library. Built in the early 1990s, the building is challenged with failing subflooring, structural concerns, and restrooms that are no longer in compliance with modern accessibility codes. As part of these improvements, more reading, study, and technology spaces will be provided by reducing the library's collection and shifting to lower stacks, which increase accessibility and improve sight-lines throughout the 5,000 SF space.

Fort Vancouver Regional Library: Operations Center Tenant Improvement / Vancouver WA In 2019, JA performed a space needs assessment for this library system to evaluate whether they should move to a new operations

facility or renovate their existing one. The results indicated they needed a new space, so a 20,000 SF administrative facility was designed as an adaptive reuse of a "big box" store. The new workplace includes an open office concept, with meeting rooms of various sizes to support team meetings. "Work booths," a wellness/mother's room, private phone rooms, a kitchen, a break room, and a lobby lounge round out the amenities.

Cara Veterinary Hospitals Tenant Improvements / Various Locations WA JA was selected as Cara's strategic partner in the implementation of numerous new hospitals in the area, including a tenant improvement in Greenwood. JA will be improving upon and implementing the design, equipment, and standards that Cara used in their existing Mercer Island Facility, to provide their hospitals with a cohesive design aesthetic.

Verathon Tenant Improvement* / Bothell WA An 80,000 SF renovation for a medical device manufacturer included an in-depth assessment and planning process to determine the needs of different end-user groups. Flexible and inviting employee cafes/lounges on each floor, as well as single occupancy rooms for video or voice calls and a mix of conference rooms, accommodate various work styles and group sizes. Featured at the entry of the building was an integrated branding element, introducing clients to the values and identity of Verathon.

*Project completed at a previous firm



SARAH BURK AIA
Associate / Architect

Sarah's architectural experience spans from efficient urban rowhouses to expansive public libraries. She applies learning from a mix of residential, hospitality, and community-focused spaces to every project she designs, resulting in spaces that feel safe and welcoming. Sarah's work includes libraries, community centers, apartments, townhomes, and larger multifamily and mixed-use projects throughout the Northwest. Her intrinsic ability to see how parts become a whole and her uncanny attention to detail make her an ideal fit for people-focused projects of every scale.

Sarah lives in Portland OR and is available for in-person meetings and project site visits for the Camas Public Library improvements project.

CREDENTIALS

Master of Architecture
Montana State University
Bachelors of Arts, Environmental Design Montana State University
Registered Architect WA
Evaluator Certificate
CalOES Safety Assessment Program
Years Experience 9

LEADERSHIP

2022 - 2025 Board of Directors / AIA Seattle
2018 - 2020 AIA Seattle Member / Young Architects Forum
2018 - 2020 ARE Subcommittee

ADDITIONAL EXPERIENCE

- 14th Avenue Townhomes / Seattle WA
- Ferdinand Townhomes / Seattle WA
- Lynn Street Flats / Seattle WA
- Ravenna Flats / Seattle WA
- 2500 Elliot Feasibility Study / Seattle WA
- 1921 Taylor Avenue Feasibility Study / Seattle WA
- Valdez Avenue Rowhouses* / Seattle WA
- Verve Flats* / Seattle WA

PARTIAL LIST OF RELEVANT EXPERIENCE

Clackamas County: Oak Lodge Library & Community Center / Oak Grove OR Partnering with Opsis Architecture on this collaboration, JA is working with the local citizens and municipalities to remodel and add to a historic elementary school as it is transformed into a 50,000 SF community center with a new 13,600 SF library.

City of Auburn: Auburn Arts & Cultural Center Adaptive Reuse / Auburn WA JA is leading the complete interior renovation of an 8,600 SF historic post office as it transforms into a new arts and cultural center for this Seattle suburb. Newly revealed raw structure merge with more refined elements, like the building's original terrazzo floors and decorative plaster mouldings, to create a unique backdrop for galleries, art studios, and community spaces.

City of Redmond: Redmond Senior & Community Center / Redmond WA Teaming with Opsis Architecture, JA is supporting the design and construction of a new senior center and community hub for the City of Redmond. The building, which is targeting LEED Gold, is divided into two wings. The north wing focuses on the needs of seniors and the broader community, with a stage, event space, and dining terrace. The south wing focuses on recreation and wellness, with basketball courts and walking track.

Oak Tree Village Community Amenities / Lacey WA This 16,000 SF amenity project is a cluster of buildings connected with a series of breezeways. Each building in the project provides a different type of amenity for the residential community including a fitness center, swimming pool, movement studio, commercial kitchen, banquet hall, and living room.

Old Works Clubhouse Renovation & Addition / Anaconda MT JA designed a full-building renovation and 1,600 SF addition to this golf clubhouse. The now-6,800 SF facility includes a dining and reception area, full service bar/lounge, outdoor covered deck with fire pits, and two golf simulators. An adjacent pro shop was also updated.

Dexter Apartments / Seattle WA This four-story building contains eight high-end residences that take advantage of amazing views of Lake Union and the Cascade Mountains. Set along bike and bus routes, the development offers easy commuting opportunities to employment hubs in South Lake Union, Fremont, and Downtown Seattle. Within walking distance to coffee shops and dining spots, the residences include two- and three-bedroom layouts and range from 1,700 to 1,880 SF.

*Project completed at a previous firm

3. METHODOLOGY & APPROACH

[THIS PAGE INTENTIONALLY LEFT BLANK]

JA / CAMAS PUBLIC LIBRARY / CHILDREN'S LEARNING HIVE + BUILDING UPDATES / RFQ #G1029

PROJECT APPROACH & METHODOLOGY

GOAL BASED PROJECT APPROACH

We believe that early goal setting forms the foundation for clear decision-making, helping designs move forward with broad consensus and support.

SETTING THE PROJECT GOALS

At the outset of a project, Johnston Architects initiates a goal-setting work session. This work session is led by JA and includes the client, representatives from user groups, staff, and other interested or affected groups. The purpose of this session is to move beyond the preliminary Scope of Work outlined in the RFQ and unearth the goals that have not yet been articulated.

To accomplish this, in our first session, all individuals are asked to write down what they perceive to be the goals of the project. Then as a group, we evaluate and organize these goals based on their relevance and impact on the project. From here we seek consensus on the primary goals, which can range from very broad to very specific, depending on the project.

For the Camas Public Library, we know that the transformation of the Children's "Learning Hive" is a primary aspect of the project, so we will likely set goals that are directly relevant to this piece. Larger goals for the project may relate more broadly to how the courtyard is used or how new furniture serves people with different mobility concerns.

Beyond functional goals, such as improved use of space and updated furnishings, we believe strongly in supporting our clients' aspirational goals as well. These often include sustainability measures, improving the wellness of employees and patrons through the use of non-toxic interior materials, providing multi-purpose spaces for groups to use for Zumba class or chess club, or the goal of increasing circulation of library materials among marginalized populations. Whatever the aspirational goals of Camas Public Library, we will work alongside you to help make them a reality.

ACHIEVING THE PROJECT GOALS

Through a multi-layered approach to project design and management, JA is able to produce outstanding, sustainable designs that reflect the desires and needs of the community while adhering to our clients' project timelines and cost parameters. The following is a description of the methodology we use to achieve project goals.

Communication / We understand that the best library designs are a reflection not only of their users but of their surrounding neighborhoods and region. Each community is unique and its civic architecture should express that. JA brings a wealth of expertise to each project, but not as a means to dictate the design. Instead, we serve as facilitators or conductors, guiding

discussions, presenting possibilities, and lending our expertise to the process so that the design team, client representatives, and community can create the design and program as a collaborative group.

A key component of this effort is conducting public engagement that cultivates lasting community support. In the early phases of design, JA will work with the library to develop a public involvement strategy that outlines who, how, and when we will engage with the community, what messaging will be used, and set targets for how much input we aim to receive.

Our outreach process incorporates effective and proven tools to reach, collect, catalog, code, and interpret public input to leverage in the design. We employ innovative strategies for community engagement, such as:

- maintaining a project website as a digital headquarters
- providing prepaid postage postcards with physical comment boxes
- sharing telephone and email contact information for a "comment line"
- leveraging the library's online presence and existing communication channels via emails and social media posts
- providing online surveys and virtual comment forms

Paralleling the public engagement effort, the JA team will facilitate discussions and convey information to agencies and public officials clearly and effectively. We translate abstract design concepts and technical regulatory information into approachable terms and tools for diverse audiences, eliciting valuable feedback on aesthetics, safety, accessibility, and activity that can inform the program and design concepts.

Along with communication with the broader community, Johnston Architects sets a priority on clear and consistent communication with our clients. At the outset of the project, we develop a communication plan that addresses the frequency and type of communication to be used as well as who the primary contacts are for which concerns. An initial meeting schedule with summary agendas will be created to ensure that meetings are on everyone's calendars well ahead of time and that the relevant people are present for specific agenda topics. Email and other digital messaging protocols will also be arranged for efficient use of time. Depending on the project size and complexity, these can range from dedicated project management sites to simply identifying who needs to be copied on what correspondence. Similar protocols are used internally for the JA project team and consultants.

Design / Our design approach is an extension of communication and begins with listening. It is an iterative process that includes the community, client, and users. Typically, we begin with information gathering and

brainstorming before anything is drawn. We always seek to imbue our work with the spirit of the place and its people, and this can't be accomplished without first generating a comprehensive understanding of both. With that in mind, JA's designers endeavor to create meetings and community spaces that are safe and comfortable for ideas and opinions to be expressed and heard. It is through this inclusion that truly inclusive spaces are designed.

We take the input and ideas received from these initial efforts and transform them into spaces, materials, and moments. We deliver these ideas in understandable and clear presentations with the intent of deriving feedback. The result is a process that improves and evolves the design through several cycles until the final solution is reached. This is a process that JA also uses in-house: through our internal Design Excellence program, we vet each project regularly with a group of JA staff. The group is made up of people with different expertise and experience levels and offers the opportunity to engage more eyes and minds in the design process at JA.

Management / JA has deep library design experience, specifically among the people who will be responsible for the management and leadership of this project. With over 30 years of experience designing libraries, our team can borrow from vast resources of institutional knowledge, and we are intimately familiar with modern library science and best practices, which continue to shape the future of library design. We take pride in working with communities to achieve beautiful and functional spaces within the confines of time and money. **JA will work with the Camas Public Library to ensure that the parameters of cost, time, and design excellence are defined and achieved.**

One consistent challenge of renovation work is the fact that the buildings are occupied and often need to remain operational during construction. **Through the use of strategic construction phasing and surge planning, renovation projects can be completed while the use of the building continues.** JA has completed numerous projects of this type and can help lead the effort even before a general contractor is on board.

For the Camas Public Library project we envision this process breaking down into the following phases:

- **Project Start-Up & Discovery**
 - How a project starts can have an outsized impact on its success. JA has developed a robust start-up checklist which we use to define roles and responsibilities, potential challenges, risks, communication cadence and methods, and the process for dispute resolution and change management. These decisions are recorded in one place and shared with the entire team. It is a living document as well as a reference.
 - During Discovery, the Camas Public Library's existing conditions will be surveyed from existing documentation and through field verification. We will use this information

to generate a 3D BIM file which will become one of our main design and documentation tools for the project. JA will also begin programming and program verification during this phase, as well as community engagement efforts.

- **Schematic Design**
 - During this phase, we will begin to implement the data gathered in the Start-Up and Discovery phases. The program will be used to develop initial floor plan options as the design concepts begin to germinate. We will progress the design and materiality of the space and present these initial concepts through 3D renderings and virtual "walk throughs".
 - JA will hold regular meetings with the decision-making team for the library to discuss our project understanding and present design concepts. Typically, these meetings are bi-weekly to ensure that any complexities or concerns that arise are addressed quickly, and that all design opportunities are explored. Our first sustainable design meeting will also occur during this phase and will set the course for sustainable strategies to be used throughout the rest of design.
 - Additionally, we will reach out to local jurisdictions to discuss permitting requirements and timing during this phase. We will engage our consultants towards the end of the Schematic Design phase, once we have a fairly clear direction for the floor plan and design intent. They will be tasked with delivering documents for the pricing exercise that will conclude this phase.
- **Design Development**
 - After review and approval of the Schematic Design direction and Cost Estimate, the design will be developed in more detail until there is consensus on the final design direction. During this phase, the meeting schedule will proceed at a similar pace. Our consultants will become more engaged and will begin to participate in regular meetings and sustainable strategies determined during the Schematic Design phase will be developed and tracked for any certifications that are being pursued.
 - Furniture Fixtures and Equipment (FF&E) design and selection will begin in this phase with multiple meeting agendas dedicated to FFE selection and design. At this point, procurement options will also be discussed along with schedules and lead times.
 - The Design Development documents will go through JA's internal QA/QC process and will then be forwarded to our cost estimator for the Design Documents pricing exercise. This Cost Estimate is extremely important as it gives a complete picture of the design and includes full input from consultants. At this point the documents are also at a level of completion that allows design contingency to be lowered. We typically recommend a two-week reconciliation period around the Design Development effort to ensure that the design that moves forward into Construction Documents is aligned with the project's budget.

JA / CAMAS PUBLIC LIBRARY / CHILDREN'S LEARNING HIVE + BUILDING UPDATES / RFQ #G1029

● Construction Documents

- JA is committed to delivering documents of the highest quality. As a firm we work across a broad range of project types and scales with varying requirements for deliverables. From large publicly bid projects to small residential remodels, JA has developed processes and tools to ensure that our documents are complete, relevant, and clear to the people who will be using them.
- Our primary tool in this effort is building information modeling (BIM). JA has a dedicated [Design Technology Manager](#) who is tasked with implementing best practices and industry-leading initiatives in our firm and educating our staff along the way. Every JA project has access to the firm's resources and is reviewed on a frequent basis.
- During Construction Documents the bi-weekly meetings will become monthly as the pace of the project slows down and the team focuses on coordinating consultant drawings and detailing the project.
- For some projects, this is when FF&E procurement will begin. Given recent volatility in the market, we keep track of lead times to ensure that the FF&E can be delivered at the appropriate time for the project completion.
- Final documents and material specifications are issued at the end of this phase, after a final, comprehensive QA/QC review. This drawing set is sent to the Cost Estimator for a final estimate, and frequently used as the bid set, which means it is sent to potential contractors during the bidding phase.

● Bidding

- In Washington State, public projects have a variety of potential alternate delivery methods. For the Camas Public Library, the GC/CM approach could be a potential given the nature of the work, but typically we have seen projects of this scope use the more traditional Design/Bid/Build process.
- JA's has extensive experience with both GC/CM and Design/Bid/Build delivery methods and currently has library projects of both types under construction. If the project is Design/Bid/Build, the bidding phase becomes arguably the most crucial phase of the project.
- JA has helped multiple owners and agencies navigate the ever-changing landscape of the construction market and its influence on bidding. There are several strategies that can be employed to attract interest, from personal outreach to the timing of bid announcements, but the most important influence on the quality of bids is the quality of the bid documents, including specifications. Cohesive and comprehensive documents will set the bidding process, and the project, up for success.

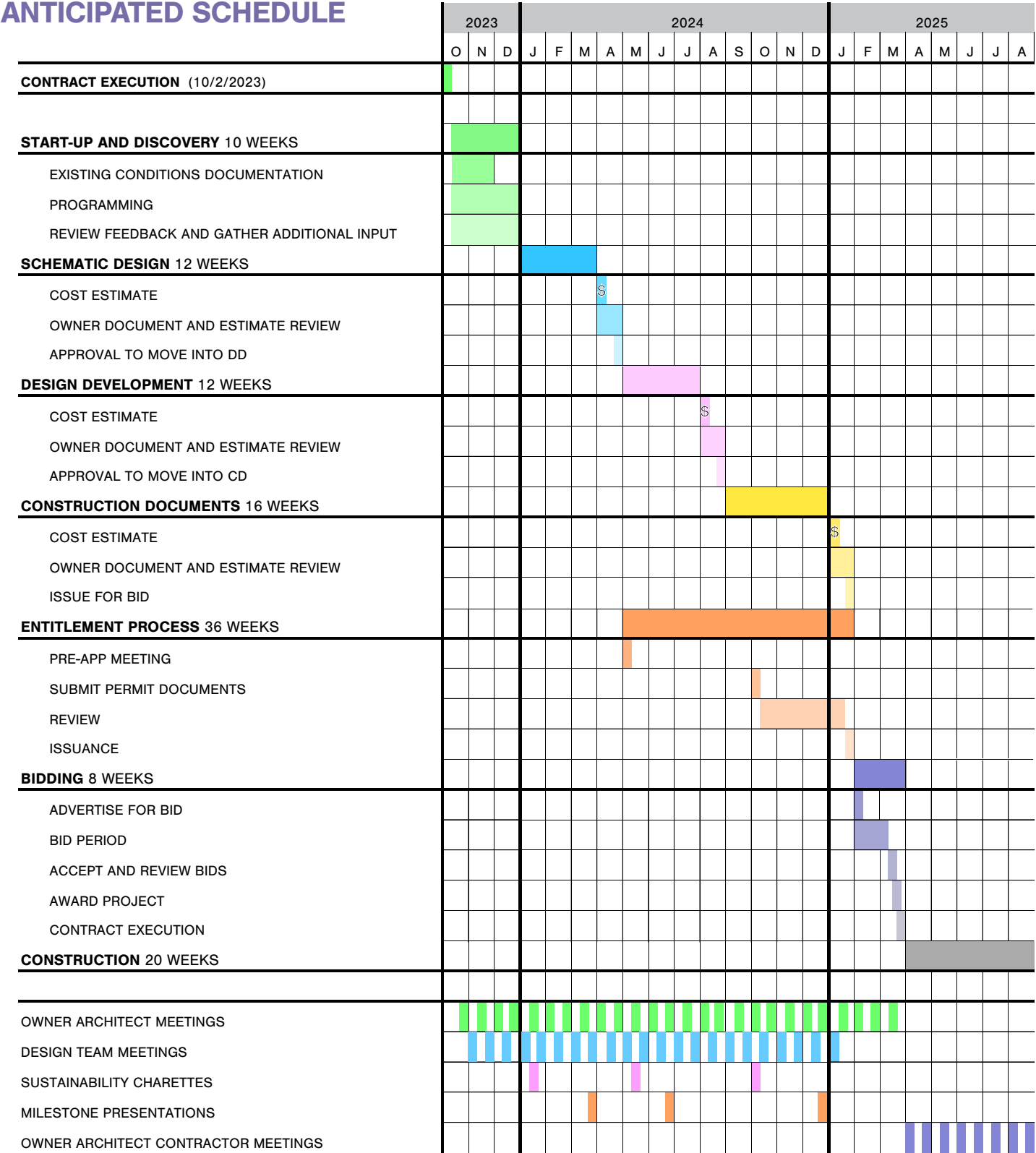
● Construction

- During the construction phase, clear expectations of responsibility are critical to success. Everything - from document management to who will be taking meeting minutes - needs to be understood and agreed upon by all parties. Building consensus on these foundational issues helps the project run smoothly and avoid unnecessary delays. Once these lines of responsibility are established it becomes much easier to build a culture of respect, which is important for communication, and for navigating the construction process successfully.
- JA is fluent in all document management systems and has worked with contractors across the region on a variety of project types and sizes. We delight in the construction phase and do everything we can to bring these designs to life.

● Cost Management

- We work to balance a community's vision while maximizing its available resources. Working alongside our trusted cost consultants at [DCW Cost Management](#), JA has proven success in containing costs on public and private projects. Using an iterative feedback loop, DCW studies and includes technology and sustainability advances in their cost perspectives, offering the design team early cost advice for informed decision-making. They continue this process throughout design development providing accurate, holistic perspectives on cost. By establishing this approach early in the process, the involved parties and the design team can adjust as needed before costly design decisions are made. Our use of BIM and integrated technologies only furthers this cost containment strategy.
- Another valuable tool that we use to manage costs is a soft cost calculator. We have found that even the most experienced clients may sometimes have blind spots when it comes to the total cost of a project beyond the construction cost. We typically have a soft cost kick-off meeting in which we go through the calculator and estimate all of the outstanding cost items, from permit fees to change order contingency. Whatever cannot be quantified at the meeting is set as homework for either the owner or the architect to research and report back on. The soft costs can change over the course of design and the calculator acts as a repository to track those changes.

ANTICIPATED SCHEDULE



4. UNIQUE QUALIFICATIONS

[THIS PAGE INTENTIONALLY LEFT BLANK]

WHAT SETS US APART?

Today’s libraries serve many roles: community center, after school hang out, meeting place, continuing education facility, and much more. At JA we are passionate about library design because of what these facilities represent. Library projects offer communities a rare opportunity to participate in the design of a building that will not only define their civic character, but will be a part of their community identity for generations. Here are some of the unique was that JA is poised to make this project at the Camas Public Library a success.

EARLY CHILDHOOD EXPERIENCE

Before pursuing a career in architecture, JA Partner [Mona Johnston Zellers](#) was a teacher at a small private preschool and elementary school in Seattle. The school had created an environment and culture that was child-centered and focused on creating flexible spaces for exploration and discovery. Students were encouraged to make connections on their own as well as together. In this environment, the architecture played a clear role: it provided the fundamentals—safety, security, daylight, fresh air, and warmth—while also creating ideal conditions for learning: quiet spaces for rest and individual discovery, active and engaging play areas, and spaces built to enable activities for those with small stature or limited reach range. The design of the school eliminated much of the friction that is often encountered in teaching and care giving, which enabled teachers to focus on the experiences of the child.

Today, as an architect focused on designing human-focused spaces for people of all ages and abilities, Mona applies her experience in early childhood education to libraries, community centers, and other public facilities. Recently, her expertise has led to JA’s unique, interactive, and tactile installations in the children’s areas of Winthrop, Edmonds, and Oak Lodge libraries. These public libraries are in very

different communities and climates; two are brand new construction and the other is a renovation. But at the core of these projects is JA’s dedication to creating experiential learning environments for all of the libraries’ patrons, with a special focus on inspiring a love of literacy and learning among small children.

LIBRARY-SPECIFIC FF&E EXPERTISE

Libraries present a unique challenge when designing, specifying, and procuring furniture and other library-specific furnishings, fixtures, and equipment (FF&E). Combining the functional requirements of material and collection processing in work areas with high traffic environments and the intricacies of publicly funded projects, JA’s expertise extends to all aspects of this critical component of library design. Library furniture design extends far beyond the aesthetic appeal of the various pieces, requiring in-depth knowledge in several distinct categories, as well as knowing the best questions to ask throughout the process to ensure the final design aligns with the goals of the library. Specification and procurement of library-specific elements such as shelving, book carts, book bins, and other equipment requires an intimate understanding of how librarians work - unique to each library and library system - as well as ergonomic issues related to book processing, knowledge of shelving manufacturers and the differences between them, and other functional requirements of library FF&E.

Procurement / Funding sources for library projects generally allow for several different methods of FF&E procurement, including purchasing through an open bid process and purchasing through Group Purchasing Organizations (GPOs). GPOs leverage the combined purchasing power of their members to obtain pre-negotiated discounts from suppliers, thus allowing them to avoid the lengthy open bid process and streamline procurement.

JA’s designers are well versed in the use of GPOs for publicly funded projects as well as the open bid process, and are able to efficiently and effectively work with both methods to meet funding requirements and procure the selected FF&E package.

Accessibility & Equity / Because libraries function as spaces for all members of a community, furniture design must reflect a broad range of needs and abilities. From consideration of height-adjustability, wheelchair access, seat width, or mobility limitations, each piece of furniture JA’s designers propose for library projects reflects our understanding of the diverse collection of patrons using the space. This thoughtful approach emphasizes an overarching commitment to equity in our library designs.

Durability / When selecting furniture and finishes for our library projects, JA designers next consider the durability of each component, from the furniture item itself to the finish or material of the final piece. Each selection we make is informed by questions such as:

- How will this furniture withstand repeated use over time?
- Is this textile bleach cleanable?
- Can we add a coating to preserve some preferred characteristics, such as acoustics, while improving others, like cleanability?
- Is this item appropriate to use in this area?

Commercially-rated furniture represents a significant financial investment for the library, so careful consideration of these benchmarks yields the greatest chance of long-term success.

Flexibility / As communities continue to evolve their uses of public libraries, JA creates complete furniture packages that allows for the future flexibility of the space while meeting their current needs and use patterns. We achieve this through select standardization, such as study tables, paired with accent pieces



T.05		Project: Edmonds Library
DESCRIPTION: One Coffee Table		Issued Date: 07 April 2023
QTY & LOCATION: (1) Flex Lounge 114H (1) Reading Area 114E		Revised: 12 June 2023
MANUFACTURER: NaughtOne		
PRODUCT: Tun 920 Coffee Table		
PRODUCT ID: 021645		
DIMENSIONS: 38"W x 22"D x 14"H		
TOP HEIGHT: 14"		
BASE: Steel Base, RAL Powder coat		
BASE FINISH: RAL 1012 Luster Yellow		
EDGE: Reverse chamfer, polished MDF		
TOP: Wood		
TOP FINISH: Oak Veneer		
GENERAL NOTES:		
1. Manufacturer to provide all required hardware and instructions for proper installation.		
2. Unless otherwise noted, provide heavy-duty nylon furniture glides, diameter to be sized according to item's leg dimension (as large as possible) without being visible. Glides color to best match leg finish.		
3. All images, photographs, and renderings of specified items in this package are for general design intent and reference only.		
Sno-Isle Architects		SNO-ISLE EDMONDS LIBRARY 55

CH.12C		Project: Edmonds Library
DESCRIPTION: Highback Armchair		Issued Date: 07 April 2023
QTY & LOCATION: (2) Children's Area 115		Revised: 12 June 2023
MANUFACTURER: Kallmeier		
PRODUCT: Elsiey Midback Arm Chair		
PRODUCT ID: 71091		
DIMENSIONS: 29.75"W x 31.75"D x 38"H		
SEAT HEIGHT: 17.5"		
ARM HEIGHT: 24"		
BASE: Ash		
BASE FINISH: Ash, Natural		
UPHOLSTERY: UPH-15		
GENERAL NOTES:		
1. Manufacturer to provide all required hardware and instructions for proper installation.		
2. Unless otherwise noted, provide heavy-duty nylon furniture glides, diameter to be sized according to item's leg dimension (as large as possible) without being visible. Glides color to best match leg finish.		
3. All images, photographs, and renderings of specified items in this package are for general design intent and reference only.		
Sno-Isle Architects		SNO-ISLE EDMONDS LIBRARY 55

ABOVE: FURNITURE SPEC PRESENTATION SAMPLES FOR SNO-ISLE LIBRARIES

that fit within the overall design aesthetic. Selecting items that can be moved throughout the space without compromising the overall design allows for flexible use of library spaces to meet patron needs as they change.

Comfort & Aesthetics / The above considerations mean very little if the furniture and finishes do not invite patrons to use the space and participate in this community amenity. Simply put, if a chair is not comfortable to sit in, patrons will not sit in it, and the library will be under-utilized. Additional considerations for comfort must include different body sizes and mobility, so providing a mix of furnishings will help ensure that patrons of all physical abilities will be able to find seating and workspaces that are comfortable for them in the library. Likewise, if the overall design package is aesthetically uninspiring—or worse, off-putting—we cease to have a successful design. Within the context of functional and performance requirements, we must also create an exciting, inspiring space for the community to enjoy. JA’s experienced library designers do exactly that.

SUSTAINABILITY IN LIBRARY RENOVATIONS & UPGRADES

Sustainable Reuse / The environment as it relates to sustainability is key to every public building. Sustainable strategies are particularly important in libraries due to their long life span. Renovating, retrofitting, and performing upgrades on the existing Camas Public Library is an environmentally-responsible decision by the City of Camas, and JA is well-experienced in supporting municipalities and libraries through the strategic space planning, design, documentation, and construction of library renovations and repurposing.

UNDERSTANDING THE NEEDS OF DIVERSE PATRONS

Designing for ADA Standards / JA’s team is currently serving as On-Call Architect for numerous public agencies, including Sno-Isle Libraries, the City of Seattle, and Seattle Center. An increasingly large part of this work includes assessing the accessibility of public facilities and then designing

the required updates to bring these civic buildings into alignment with current codes and ADA standards.

Through this work, we are also addressing accessibility outside of the built environment by [creating digital documents, such as this Statement of Qualifications, to be accessible for visually-impaired individuals](#). This new initiative at JA will be applied across our company documents throughout 2023.

Inclusion in Acoustics / Today’s public libraries serve a broader set of purposes than those of the past, and so must be designed to accommodate different activities and noise levels. Children’s story time and educational play, arts and culture lectures, community meetings, and small study groups have different acoustical needs. For this reason we often add an acoustical engineer to our team to help our projects benefit from their expertise in acoustic and noise vibration management. Wide open floor plans don’t work for everyone, and ambient noise in open spaces can be very challenging for some individuals. Physical and spatial strategies like “bubble” desk chairs that provide nest-like work environments and sound-proofed telephone booth-inspired “zoom rooms” can help create more equitable and inclusive library and study spaces.

Outdoor Connections / In the past, many libraries avoided direct outdoor access in their facilities due to concerns about patron security and theft of collection materials, but today’s modern libraries seek to celebrate indoor/outdoor connections and patrons’ relationships with the surrounding environment and community. Easily accessed during library hours for the enjoyment of patrons, these spaces may take the form of children’s gardens, small amphitheatres for lectures, or spill-out areas adjacent to community rooms that provide fresh air and promote wellness. While we generally incorporate these into new libraries, it is completely possible to retrofit existing facilities for these types of outdoor community spaces.

INNOVATION

Innovative Uses of Technology / Johnston Architects is an innovative design firm dedicated to solving complex

4. UNIQUE QUALIFICATIONS

architectural and programmatic issues by leveraging our extensive hands-on experience and the latest technology to achieve the highest possible goals in performance and the long-lasting satisfaction for our clients. Our seamless combination of industry-leading technology with thoughtful design allows us to find solutions that other design firms may not.

We have deep expertise in digital fabrication which allows us to create custom solutions for any project that requires an especially creative design solution. We are able to model unique elements of a project at full-scale to collaborate directly with contractors and communicate the design intent. At the Winthrop Library we used digital fabrication to create a center piece for the [Children's Area](#). We digitized Mona Johnston Zellers' original art depicting the flora and fauna of the Methow Valley and built a cozy reading nook that resembles a copse of trees. Not only did this installation help tie the architecture to its place in Winthrop, it provided a convenient way to hide the children's restroom.

At JA we also use technology to run simulations on our designs before they are built. We perform in-house energy modeling on all of our projects. Having this capability internally allows us to make decisions early in the design process when the most significant sustainability benefits can be achieved. It is much more difficult to reverse engineer your way to energy efficiency than to design it that way from the start.

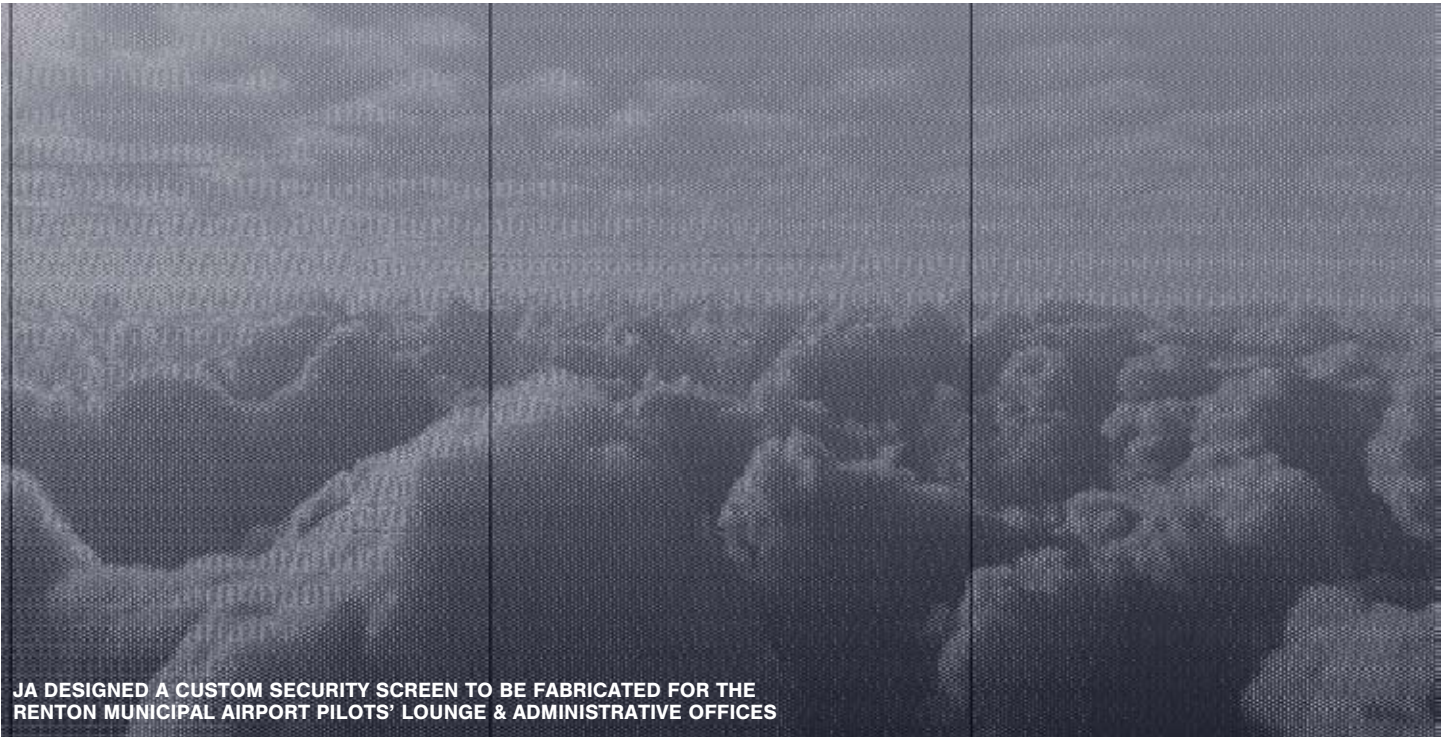
Even on library renovation projects, lighting analysis can shape discussions around where meeting and study areas are located and what type of shading systems will be used to produce the most ideal reading conditions.

Fabrication Expertise / JA is very proud of the passion that drives each of our employees to produce something unique for our clients. What makes a project special is in the details, and JA has the expertise, ambition, and genuine curiosity to create memorable - and affordable - spaces for our public clients through the use of custom fabrication.

Some examples of JA's integration of art, architecture, and technology-driven fabrication solutions in public spaces include:

- Winthrop Library Children's Area
- Edmonds Library Children's Area
- [Renton Municipal Airport Reception Desk Screening](#)
- [First Flight](#) - Seattle Design Festival Pavilion
- [The View From Here](#) - Bellevue Arts Museum

To guide our design process, JA has a 3D printing and laser cutting capabilities in-house, as we believe digital fabrication is a cost-effective tool for creating quick and informative physical models. We are also continually improving our visualization capabilities, and our full time [Design Technologist](#) performs research to develop and improve numerous software programs to maximize daylighting, improve energy efficiency, and even optimize views in libraries and other public buildings.



JA DESIGNED A CUSTOM SECURITY SCREEN TO BE FABRICATED FOR THE RENTON MUNICIPAL AIRPORT PILOTS' LOUNGE & ADMINISTRATIVE OFFICES

5. SUBCONSULTANTS

CONSULTANT TEAM



Catena Consulting Engineers is Portland-based structural engineering firm founded in 2005. The firm was founded to provide client-focused, creative structural solutions regardless of project size. With an excess of \$6 billion in construction volume in the Pacific Northwest, the firm strives to meet the diverse needs of owners, architects, and contractors. The 16-person Catena provides structural engineering services to civic organizations throughout the Pacific Northwest.

The design of libraries and other community-oriented projects speaks to the mission of Catena: helping design structures that build lasting connections to the community and the people whose lives they influence. Catena is currently collaborating on two community libraries with JA – the Gladstone Library and the Oak Lodge Library – in Clackamas County. Both libraries enhance the services in these communities to meet the needs of adults, teenagers, and children alike.

Catena Relevant Experience

- Clackamas County / OR
 - Oak Lodge Library [with JA]
 - Gladstone Library [with JA]
- Banks Library Addition / Banks OR
- Tualatin Library Makerspace Addition / Tualatin OR
- Wasco County Library / Maupin OR
- The Dalles Library Addition / The Dalles OR
- Library Conceptual Study, Marylhurst University / Lake Oswego OR
- Allen Price Commons, University of Oregon / Eugene OR
- The Learning Commons, Portland Community College / Portland OR



Interface Engineering is a multi-discipline engineering consulting firm known for innovation, visionary sustainable design, and breakthrough engineering solutions for new and existing buildings. Their work demonstrates how integrated design and creative collaboration can produce outstanding results for clients, communities, and our environment. They focus on high-performance, pragmatic design solutions, and have completed more than 220 LEED certified projects and 50 Net-Zero buildings. Interface’s mission is simple: help build optimal environments for life.

Headquartered in Portland since 1969, Interface brings extensive experience to public libraries and has completed numerous projects in the Pacific Northwest and throughout the United States. Interface has been designing library facilities, both public and private, for more than 50 years, including the planning and design of new and pre-existing library spaces. Through strategic design and planning of the built environment, they help ensure the role of the community library continues to evolve.

Committed to a vertically integrated inclusive design, from the economy to the inhabitants, Interface goes beyond meeting targets and efficiencies to develop unique, place-based design solutions for today’s library facilities and building systems. They understand the operational consideration of designing and building safe and efficient library environments and focus on end-user efficiency, as well as life-cycle cost management, to address the challenges of this diverse sector.

Interface Library Experience

- Fort Vancouver Regional Library
 - District Wide HVAC System Improvements

- Additional Washington Libraries
 - Covington Public Library
 - Algona-Pacific Library Site Lighting
 - Lincoln High School Library Lighting
 - Newport Way Public Library Expansion
 - Richland Public Library
 - Vancouver Community Library [LEED Gold]
 - Whitman College Penrose Memorial Library
- Clackamas County / OR
 - Oak Lodge Library [with JA]
 - Gladstone Library [with JA]
- Deschutes Public Library System
 - Central Library
 - Redmond Library
 - Downtown Bend Library
- Additional Oregon Libraries
 - Baker Elementary School Library Addition
 - Bear Creek Elementary School Electrical Library Revisions
 - Beaverton City Public Library
 - Bend Public Library Remodel
 - Canby Public Library & Civic Center
 - Oregon City Public Library, Carnegie Remodel & Addition
 - Cornelius Public Library/ Bienestar Housing
 - Driftwood Public Library Renovation [LEED Certified]
 - Estacada Public Library
 - F. Maxine & Thomas W. Cook Memorial Library
 - Happy Valley Public Library & Village Green Park
 - Harvey Scott Memorial Library Due Diligence
 - Lake County Public Library
 - Lake Oswego Public Library Renovation & Lighting Design
 - Linwood Elementary Library Renovation
 - Multnomah County Library System
 - Newport Public Library
 - Stayton Public Library Expansion
 - Sunnyside Village Public Library
 - Tualatin Public Library Cold Cathode Replacement
 - West Slope Community Library Lighting Remodel



DCW is an independent third-party cost consultancy with offices in Portland and Seattle. They provide managed solutions through cost advice for clients who investing in infrastructure, property maintenance, and construction development. Because they are embedded in the regional construction community, they deliver costs that are reflective of the market and are detailed using a clear, efficient construction development perspective. DCW has a proven track record of providing accurate cost planning and cost control services. Typically, their cost estimates fall within 5% of the low bid amounts on projects and often within 3% of the bid.

DCW’s approach to preparing cost planning begins with understanding the involved parties’ project goals. Through that understanding they develop cost plans that represent a complete perspective and then build upon that information to provide replacement values, alternates and ultimately complete project costs from a constructability standpoint.

DCW Cost Management is a Women-Owned Small Business.

DCW Library Experience

- Fort Vancouver Regional Library
 - Woodland Library
 - Washougal Community Library
- Whatcom County Library System
 - Blaine Library [with JA]
 - Facilities Condition Assessment
- Multnomah County
 - Albina & North Portland Library
 - Gregory Heights Library Exterior Renovation
 - Capitol Hill Library
 - Central Library
 - Capital Planning, 24 Locations
 - Library Bond Capital Projects, 4 Locations

- Sno-Isle Libraries / WA
 - Snohomish Library Upgrades
 - Edmonds Library Renovation [with JA]
 - Mill Creek Library Renovation [with JA]
- Seattle Public Library
 - Central Library Facility Upgrades
 - Maintenance & Operations Center
- King County Library System
 - Renton Library
 - Tukwila Library
- Additional Northwest Libraries
 - Bellingham Library Space Plan
 - Port Townsend Library Historical Renovation & Addition
 - Walla Walla Public Library Expansion & Renovation
 - Longview Library Upgrades
 - WWU Wilson Library Disability Resources & Veteran Services
 - Timberland Library
 - Mount Vernon Library, Community Center & Parking Garage
 - Skagit Valley College, Norwood Cole Library Envelope Repair
 - Wilsonville Library
 - Grants Pass Library
 - Illinois Valley Library
 - Williams Branch Library
 - Astoria Library Option Study
 - Sherwood Library Addition
 - Coos Bay Library Option Study
 - Happy Valley Library
 - Corvallis-Benton County Public Library Renovation



Lango Hansen Landscape Architects (LHLA) provides a wide range of services in landscape architecture, planning, and urban design. Over the past 20 years, the firm has successfully designed landscapes for public parks, libraries, school and university campuses, and public facilities. LHLA approaches each project as a unique opportunity to develop designs that address the particular character of the site, the specifics of the program, and the needs of individuals and communities. With a commitment to detail and craftsmanship, LHLA creates long-lasting designs that express the innate character and value of each unique landscape. Having completed numerous public and private projects, including with JA, LHLA works well with public agencies, community groups, and multi-disciplinary teams. The firm has a strong history of providing high quality design and documentation within specified timelines and budgets. Throughout the design and documentation process, LHLA provides the leadership necessary to achieve and enhance the client’s goal and vision.

Lango Hansen Library Experience

- Fort Vancouver Regional Library District
 - Cascade Park Library [with JA]
- Oregon City Library
- Clackamas County / OR
 - Gladstone Library [with JA]
 - Oak Lodge Library [with JA]
- Other Oregon Libraries
 - Happy Valley Library
 - Kenton Library
 - Rockwood Library
 - Multnomah Central Library
 - Cornelius Library

Lango Hansen Camas Experience

- Camas/Washougal Community Center

[THIS PAGE INTENTIONALLY LEFT BLANK]

COMPLETE LIST OF LIBRARY PROJECTS



DUVALL LIBRARY

Fort Vancouver Regional Libraries

- Cascade Park Library
- Operations Center Needs Assessment
- Operations Center Tenant Improvement

Sno-Isle Library District

- Edmonds Library Renovation
- Freeland Library
- Mill Creek Library Renovation
- Sno-Isle Library Service Center
- Snohomish Library Renovation Study (Carnegie)

Seattle Public Library

- Columbia City (Carnegie Update)
- Capitol Hill Library
- Douglass-Truth (Historic Update)

- Fremont (Carnegie Update)
- Green Lake (Carnegie Update)
- Madrona (Carnegie Update)
- South Park Library
- University (Carnegie Update)
- West Seattle (Carnegie Update)

King County Library System

- Bellevue Library Parking Garage Expansion
- Duvall Library
- Kenmore Temporary Library
- Maple Valley Library
- Newport Way Library Renovation
- Richmond Beach Library
- Sammamish Library
- Shoreline Library

Other Libraries

- Blaine Library
- Bozeman Library
- Corvallis-Benton County Central Library Addition & Remodel
- Gladstone Library
- Lacey Public Library
- Oak Lodge Library
- Orange County Children's Library Renovation, Space Planning
- Philomath Library
- Powell Library Remodel
- S'Klallam House of Knowledge & Little Boston Library
- Winthrop Library
- Washington Talking Book & Braille Library Needs Assessment
- Yolo County Law Library Renovation, Space Planning

SELECTED LIBRARY REFERENCES

R.D. BURLEY

Assistant Director of Facilities, Safety & Security, Sno-Isle Libraries
360.913.1606 / rburley@sno-isle.org

- **Mill Creek Library Renovation / Mill Creek WA**
 - This 5,000 SF community library is receiving updated systems, finishes, and improved programming.
- **Edmonds Library Renovation / Edmonds WA**
 - Read more on Pages 3-4
- **Sno-Isle Libraries Service Center Accessibility Improvements / Marysville WA**
 - Minor accessibility improvements to the library district's service center, which was originally designed by JA in the 1990s.

JILL SHELEY

Executive Director
Friends of the Winthrop Library (FOWL)
425.830.7200 / jill@s2advisors.com

- **Winthrop Library / Winthrop WA**
 - Completed in June 2022, this 7,300 SF JA-designed Winthrop Library was a partnership with FOWL and North Central Washington Libraries.

MITZI OLSON

Library Manager
Clackamas County, Department of Transportation & Development
503.655.8570 / molson@clackamas.us

- **Oak Lodge Library / Oak Grove OR**
 - JA is serving as Library Architect in collaboration with Opsis Architecture to design a library on a multi-purpose public campus, adjacent to a community center.
- **Gladstone Library / Gladstone OR**
 - In collaboration with Opsis Architecture, JA is designing a 6,000 SF library for this Portland suburb, creating a Main Street hub for this burgeoning community.

MICHAEL COX

Deputy Director
Whatcom County Library System
360.305.3602 / michael.cox@wcls.org

- **Blaine Library Conceptual Design / Blaine WA**
 - JA completed a feasibility study on behalf of the City of Blaine and WCLS to assess if the current facility should be renovated or a new library built. A new library was developed through Conceptual Design to support WCLS' fundraising efforts for this facility.

GREGORY SMITH

Director of Facilities Management Service, King County Library System
425.369.3237 / ggsmith@kcls.org

- **Bellevue Library Parking Garage Expansion / Bellevue WA**
 - JA worked with KCLS and the City of Bellevue to design and construct a three-level garage on the existing parking lot footprint. The library remained open during construction, allowing JA to manage and mitigate logistical challenges.
- **Duvall Library / Duvall WA**
 - Located within the historical district of Duvall, the exterior of this library was designed to complement the city's history and scale and character of Main Street. The building is wrapped with recycled barn wood and topped with a living roof, contributing to its sustainability.
- **Maple Valley Library / Maple Valley WA**
 - The 10,200 SF library is carefully nestled within a two-acre second-growth forest. Great care was taken to insert parking and building within its wooded environment, 90% of which was preserved. The most affordable library of its time, the building set the aesthetic for subsequent public buildings in Maple Valley and won numerous AIA design awards.



CHILDREN'S AREA / BLAINE LIBRARY



MAPLE VALLEY LIBRARY

