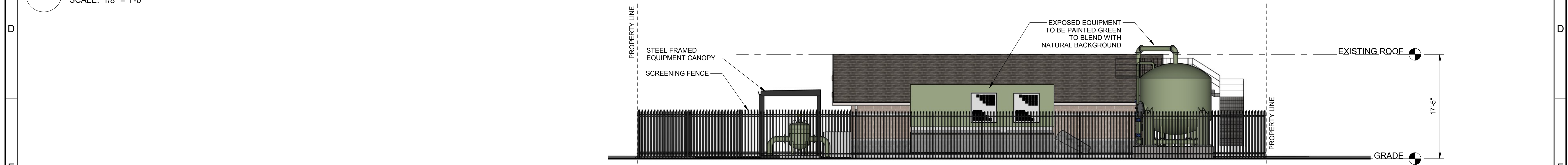


- MATERIAL LEGEND:**
ALL MATERIAL AT NEW CONSTRUCTION ARE TO MATCH EXISTING.
LEGEND BELOW SHOWS EXISTING MATERIAL PALLETTE.
- COCOA SPLIT FACE CMU
 - NATURAL SMOOTH FACE CMU
 - CHARCOAL SCORED FACE CMU
 - CEMENT BOARD LAP SIDING, PAINTED
 - COMPOSITE ASPHALT SHINGLES TO MATCH EXISTING
 - EXPOSED CONCRETE (CURBS AND WALKWAYS)
 - FAUX WINDOWS

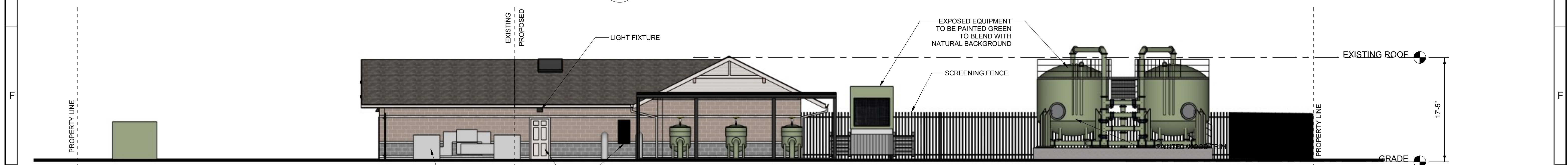
1 NORTH ELEVATION - STAGE 1
SCALE: 1/8" = 1'-0"



2 EAST ELEVATION - STAGE 1
SCALE: 1/8" = 1'-0"



3 SOUTH ELEVATION - STAGE 1
SCALE: 1/8" = 1'-0"



4 WEST ELEVATION - STAGE 1
SCALE: 1/8" = 1'-0"

INTERMEDIATE DESIGN SUBMITTAL NOT FOR CONSTRUCTION				DESIGNED SO							CITY OF CAMAS			VERIFY SCALES	JOB NO. 203101
				DRAWN KP							CAMAS PFAS EVALUATION & WELL 13 TREATMENT			BAR IS ONE INCH ON ORIGINAL DRAWING	DRAWING NO. LU - A03
				CHECKED SO							ARCHITECTURAL			0 1"	SHEET NO.
				DATE FEBRUARY 2025							ELEVATIONS - STAGE 1			IF NOT ONE INCH ON THIS SHEET, ADJUST SCALES ACCORDINGLY	OF XX
REV	DATE	BY	DESCRIPTION												
1															
2															
3															
4															

PLOT DATE: 2/27/2025 3:13:53 PM



FILE NAME: Autodesk Docs://City of Camas - 203101/203101_00A0101.rvt