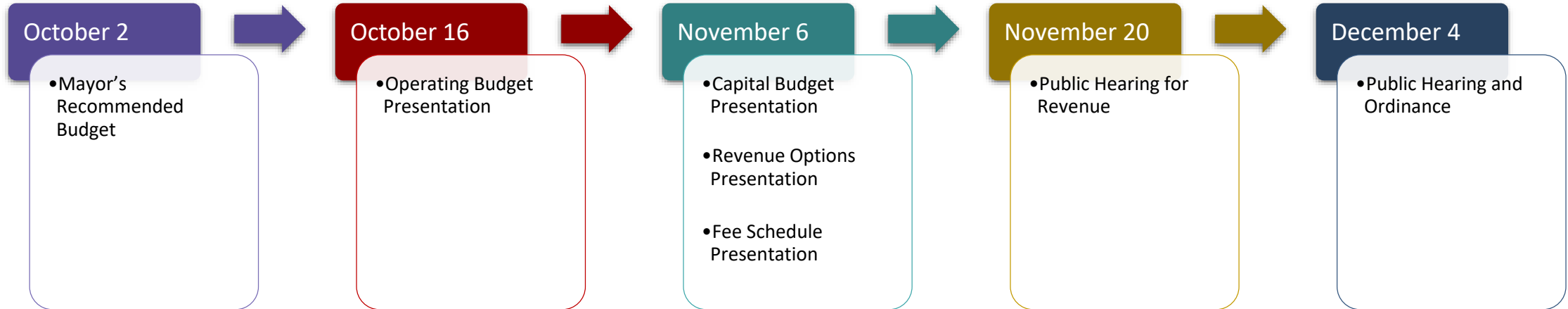




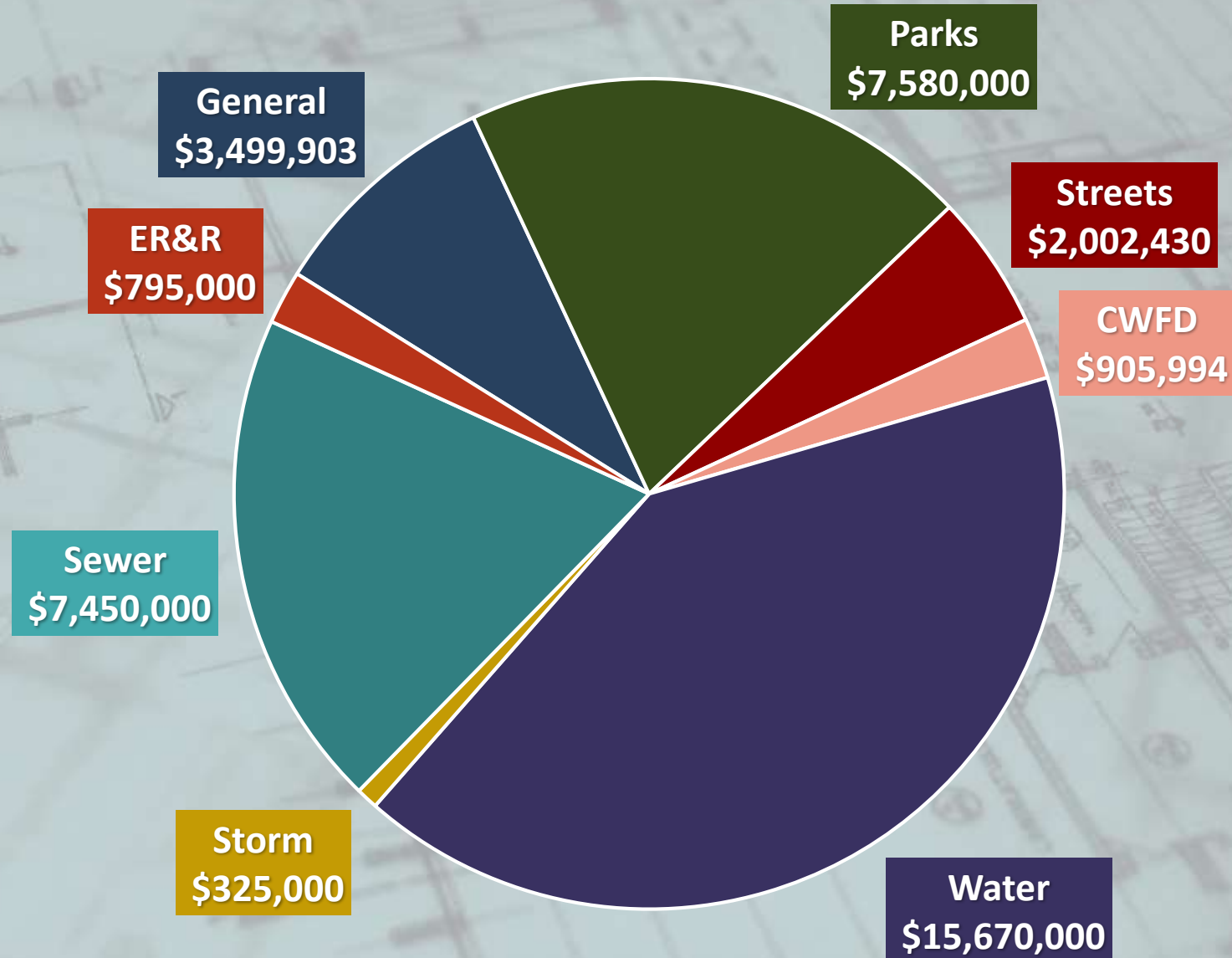
# 2024 MAYOR'S RECOMMENDED BUDGET: CAPITAL

City of Camas

# BUDGET READOPT PROCESS

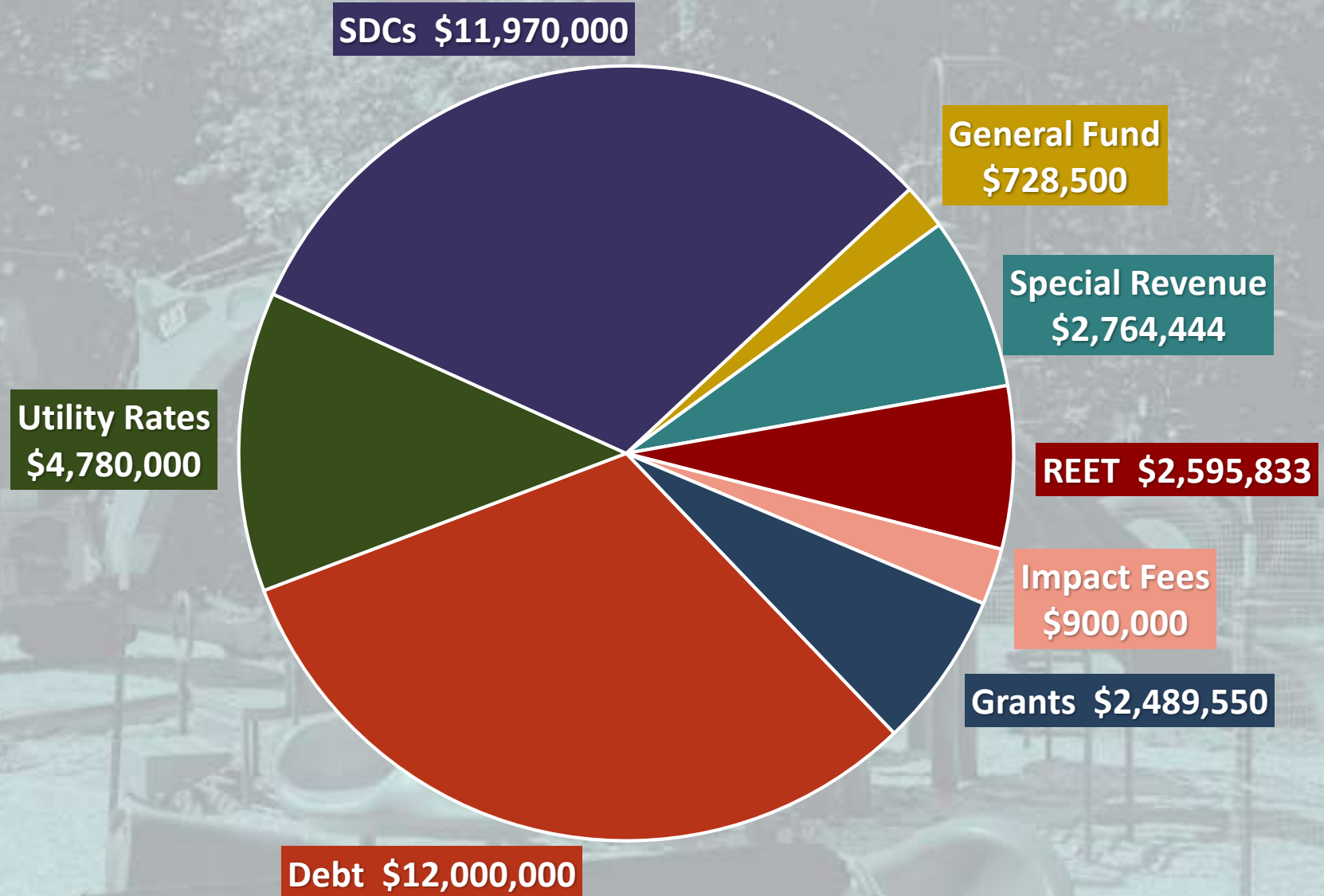


# CAPITAL EXPENSE: \$38.2M





# CAPITAL FUNDING SOURCES



# 2024 CAPITAL GRANTS: \$2.5M



## **FACILITIES - \$499,550**

The Library HVAC repair project received a grant from the Washington State Department of Commerce



## **LIBRARY - \$730,000**

The Library exterior repairs project received a grant from the Washington State Department of Commerce



## **STREETS - \$260,000**

The Horizontal Curves project received a grant from the Highway Safety Improvement Program



## **PARKS - \$1,000,000**

The Crown Park and S. Lacamas Creek Trailhead received grants from the Recreation and Conservation Office.

# GENERAL FUND

Capital	Cost
<b>Police</b>	
Cameras (Vehicle/Interview Room)	\$53,520
<b>Information Technology</b>	
Cyber-Security	\$60,000
Replacement Phone System	\$485,000
<b>Facilities</b>	
Annex Building Upgrades	\$600,000

Capital (cont.)	Cost
<b>Library</b>	
HVAC Replacement	\$950,000
Exterior Repairs	\$730,000
Interior Upgrades & Repairs	\$583,883
<b>Cemetery</b>	
Columbarium/Niche Wall Repairs	\$37,500
<b>Total</b>	<b>\$3,499,903</b>



# SPECIAL REVENUE & CAPITAL FUNDS

Street Capital	Cost
Pavement Preservation	\$1,127,430
City Horizontal Curves Improvements	\$260,000
Replacement Traffic Signal Controller	\$115,000
NW Lake/Sierra St Signal Improvements	\$500,000
<b>Total</b>	<b>\$2,002,430</b>

CWFD Capital	Cost
Replacement Fire Engine	\$905,944
<b>Total</b>	<b>\$905,944</b>

Parks Capital	Cost
Open Space/Parks/Trails	\$250,000
Field Drainage Improvements	\$75,000
Restroom/Dugout Structure Rehab	\$300,000
Bike Park Design & Construction	\$325,000
Legacy Lands Master Planning	\$150,000
Pool Planning	\$150,000
Community Center Planning	\$120,000
Crown Park Improvements	\$5,150,000
East Lake (T-3) Trail	\$400,000
South Lacamas Creek Trailhead	\$600,000
<b>Total</b>	<b>\$7,520,000</b>

# UTILITY FUNDS

Storm Water Capital	Cost
Upper Dam Gate Replacement	\$325,000
<b>Total</b>	<b>\$325,000</b>

Sewer Capital	Cost
WWTP Upgrades	\$5,000,000
Gravity Sewer Upgrades	\$1,000,000
Pump Station Repair & Replacement	\$650,000
Prune Hill Park Pump Station	\$800,000
<b>Total</b>	<b>\$7,450,000</b>

Water Capital	Cost
Well/Reservoir Site Security Upgrades	\$300,000
Washougal Wellfield Improvements	\$500,000
Forest Home Booster Station Improvements	\$3,170,000
Water Repair & Replacements	\$500,000
Northshore Water Transmission Main	\$2,000,000
NE 43 <sup>rd</sup> /Franklin Replacement Design/Constr	\$500,000
SE 6 <sup>th</sup> Ave Bridge Crossing Construction	\$1,500,000
Lower Prune Hill Reservoir	\$7,200,000
<b>Total</b>	<b>\$15,670,000</b>

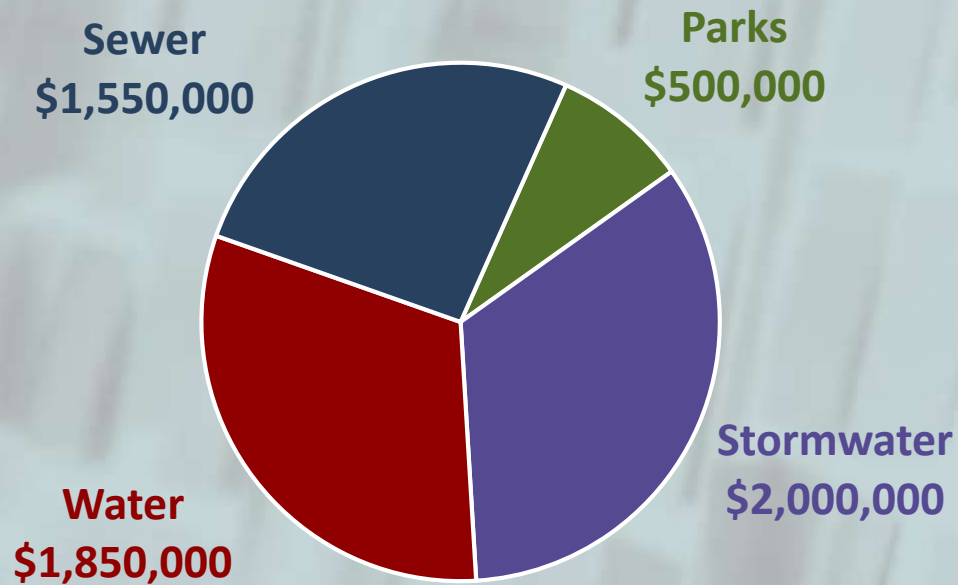


# EQUIPMENT FUND

Equipment R&R Capital	Cost
Electric Manlift (Facilities)	\$20,000
Step System Van	\$75,000
CCTV Van for Sewer/Storm	\$200,000
Operations Center Mezzanine Expansion	\$100,000
Operations Center Generator	\$400,000
<b>Total</b>	<b>\$795,000</b>



# PROJECTS REMOVED FROM 2024 CAPITAL BUDGET: \$5.9M



## Parks

- Replace Fallen Leaf Lake Picnic Shelter \$500,000

## Storm

- Columbia Summit Retrofit \$2,000,000

## Water

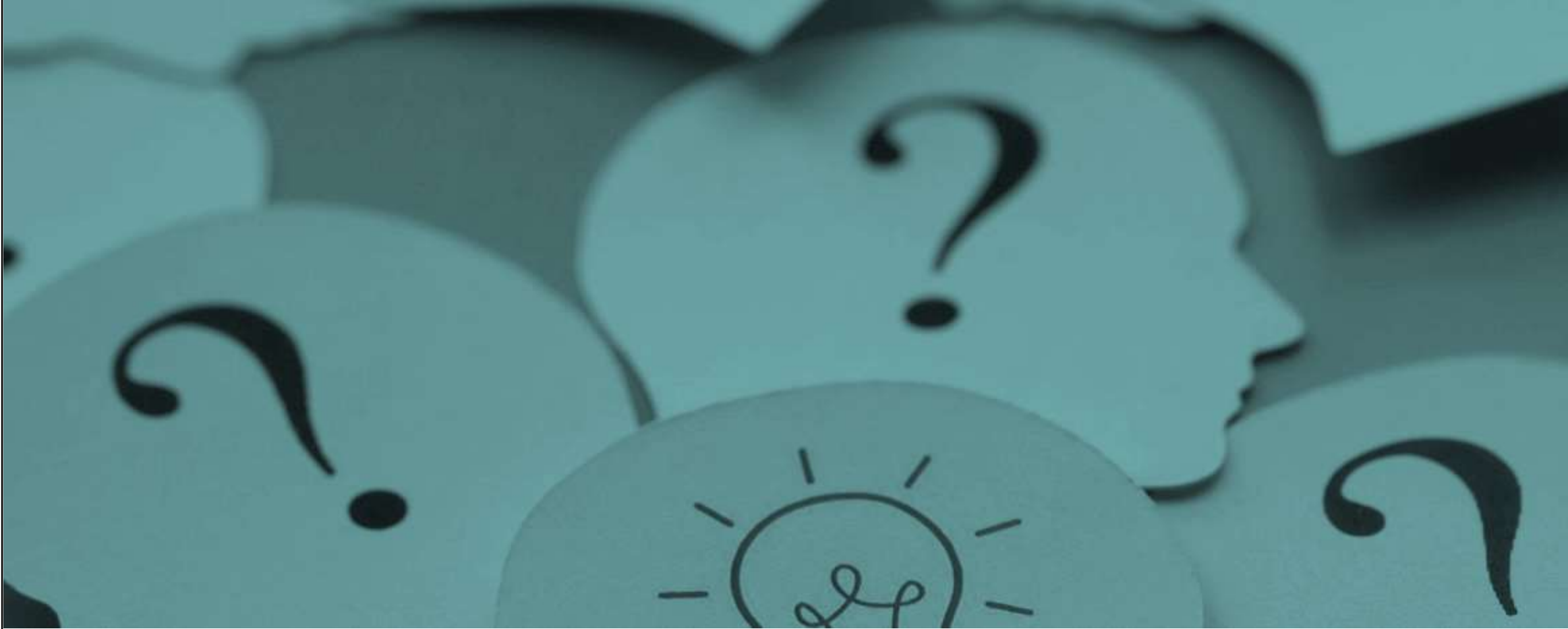
- Boulder Parallel Intake Line \$350,000
- Gregg Reservoir Siting Analysis \$200,000
- Hathaway Road Line \$300,000
- Crown Road Booster Station \$1,000,000

## Sewer

- Pump Station Telemetry Upgrades \$1,550,000

Priority Level	Department /Fund	Title	2024	General	Streets	ARPA	CWFD	TIF	PIF	REET 1	REET 2	Legacy Lands	Cap Facilities	Grants/Contribute	Debt	Storm Water	Solid Waste	Water	Sewer	SDC	
1	General Govt.	Police Interview Room Camera System	27,000			27,000															
3	General Govt.	Police Fleet In-Car Camera System	26,520			26,520															
2	General Govt.	IT - Cyber Security Mgmt & Detection	60,000			60,000															
1	General Govt.	IT - Phone System Replacement	485,000			485,000															
1	General Govt.	Citywide Major Building Maintenance	1,550,000							1,050,450				499,550							
no rank	General Govt.	Library Exterior	730,000											730,000							
1 & 4	General Govt.	Library Building Repairs	583,883	243,500						340,383											
1	General Govt.	Cemetery Columbarium/Niche Wall	37,500			37,500															
1	Streets Capital	Pavement Preservation	1,127,430		1,052,430					75,000											
new	Streets Capital	City Horizontal Curve Improvements	260,000											260,000							
new	Streets Capital	Replacement Traffic Signal Controller 38th	115,000		115,000																
3	Streets Capital	NW Lake & Sierra Signal Improvements	500,000					500,000													
1	CWFD	Replacement Fire Engine	905,994				905,994														
4	Parks	Open Space/Parks/Trails	250,000								250,000										
1	Parks	Sports Field Assessments	60,000	60,000																	
1	Parks	Field Drainage Improvements	75,000	75,000																	
1	Parks	Restroom/Dug Out Structures Rehab	300,000									300,000									
4	Parks	Bike Park Design & Construction	325,000								325,000										
4	Parks	Legacy Lands Master Planning	150,000									\$ 150,000									
4	Parks	Pool Planning	150,000	150,000																	
1	Parks	Community Center Planning	120,000	120,000																	
2	Parks	Crown Park Improvements Phase 1 & 2	5,150,000											3,500,000	1,650,000						
4	Parks	T-3 (East Lake) Trail	400,000						400,000												
2	Parks	South Lacamas Creek Trailhead	600,000								100,000			500,000							
3	Stormwater	Upper Dam Gate Replacement	325,000													325,000					
2	Water	Well/Reservoir Site Security Upgrades	300,000																		300,000
1	Water	Washougal Wellfield Improvements	500,000																		500,000
no rank	Water	Forest Home Booster Station Improvements	3,170,000																		3,170,000
1	Water	Water Repair & Replacement	500,000																500,000		
1	Water	Northshore Water Transmission Main	2,000,000																		2,000,000
1	Water	NE 43rd/Franklin Replacement	500,000																500,000		
1	Water	SE 6th Ave Bridge Crossing - Construction	1,500,000																1,500,000		
no rank	Water	Lower Prune Hill Reservoir	7,200,000												7,200,000						
1	Sewer	WWTP Upgrades	5,000,000																		5,000,000
1	Sewer	Gravity Sewer Upgrades	1,000,000																		1,000,000
2	Sewer	Pump Station Repair & Replacement	650,000																	650,000	
no rank	Sewer	Prune Hill Park Pump Station	800,000																	800,000	
1	Equipmt R&R	Electric Manlift (Facilities)	20,000	20,000																	
3	Equipmt R&R	Vehicle - STEP System Van (Sewer)	75,000																	75,000	
3	Equipmt R&R	Vehicle - CCTV Van (Sewer, Storm)	200,000																	200,000	
1	Equipmt R&R	Operations Center Mezzanine Expansion	100,000											100,000							
1	Equipmt R&R	Operations Center Generator	400,000	60,000	55,000									55,000		55,000	55,000	60,000	60,000		
			\$38,228,327	\$728,500	\$1,222,430	\$636,020	\$905,994	\$ 500,000	\$400,000	\$1,465,833	\$975,000	\$150,000	\$155,000	\$5,489,550	\$8,850,000	\$430,000	\$55,000	\$2,560,000	\$1,735,000	\$11,970,000	





**QUESTIONS?**