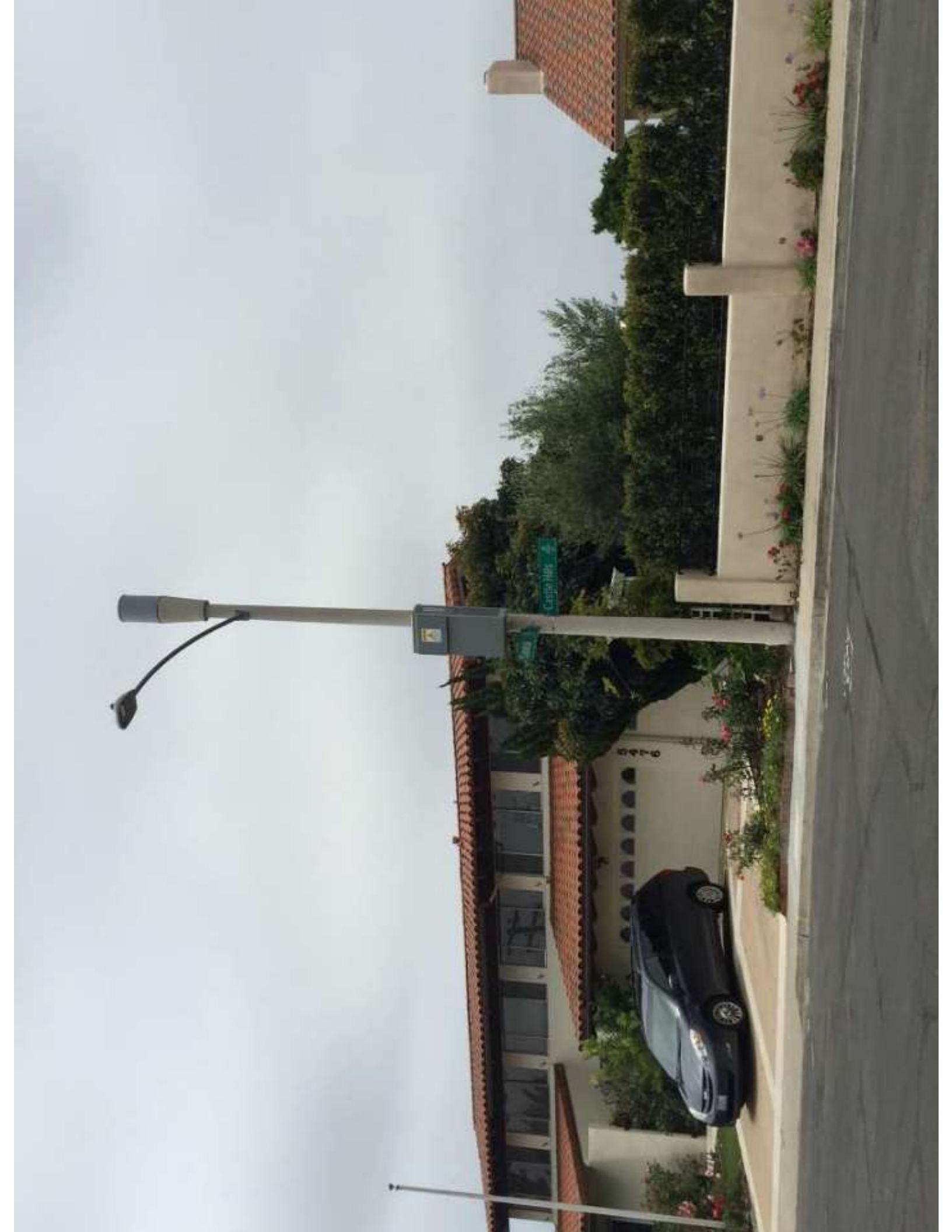
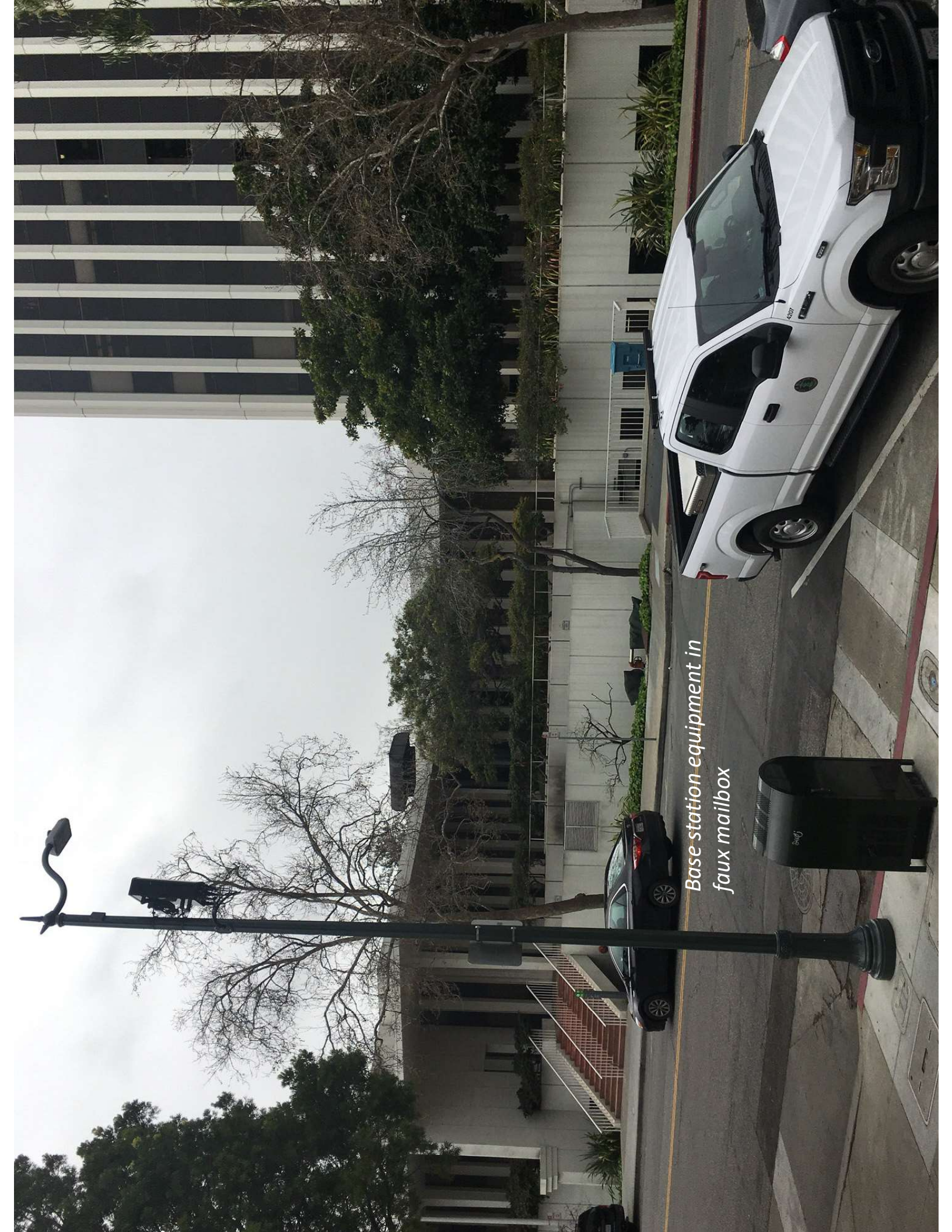


**Some examples of existing
small cells and existing sites
that would qualify as SWFs...**



CASTLE BLVD

0-4-20

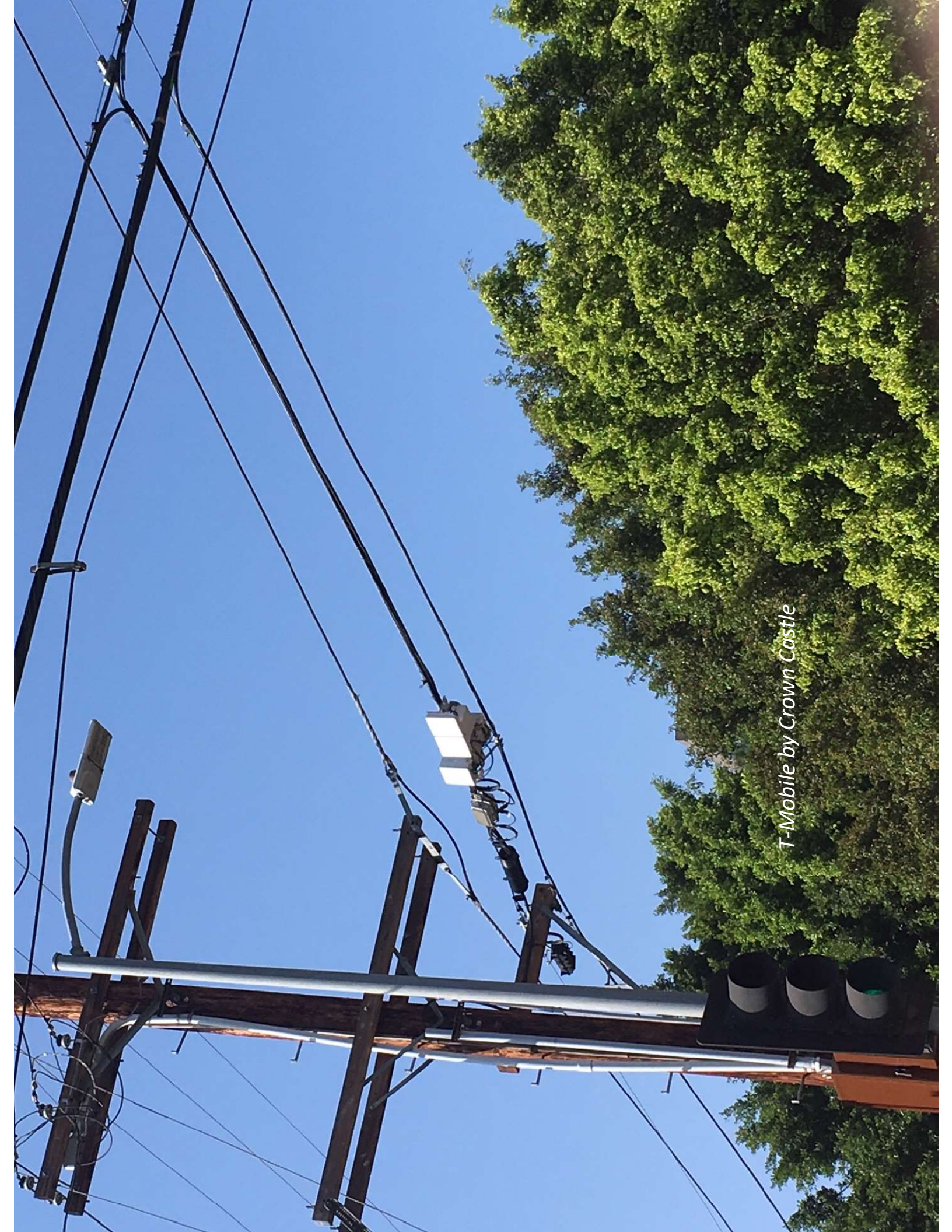


Base station equipment in faux mailbox

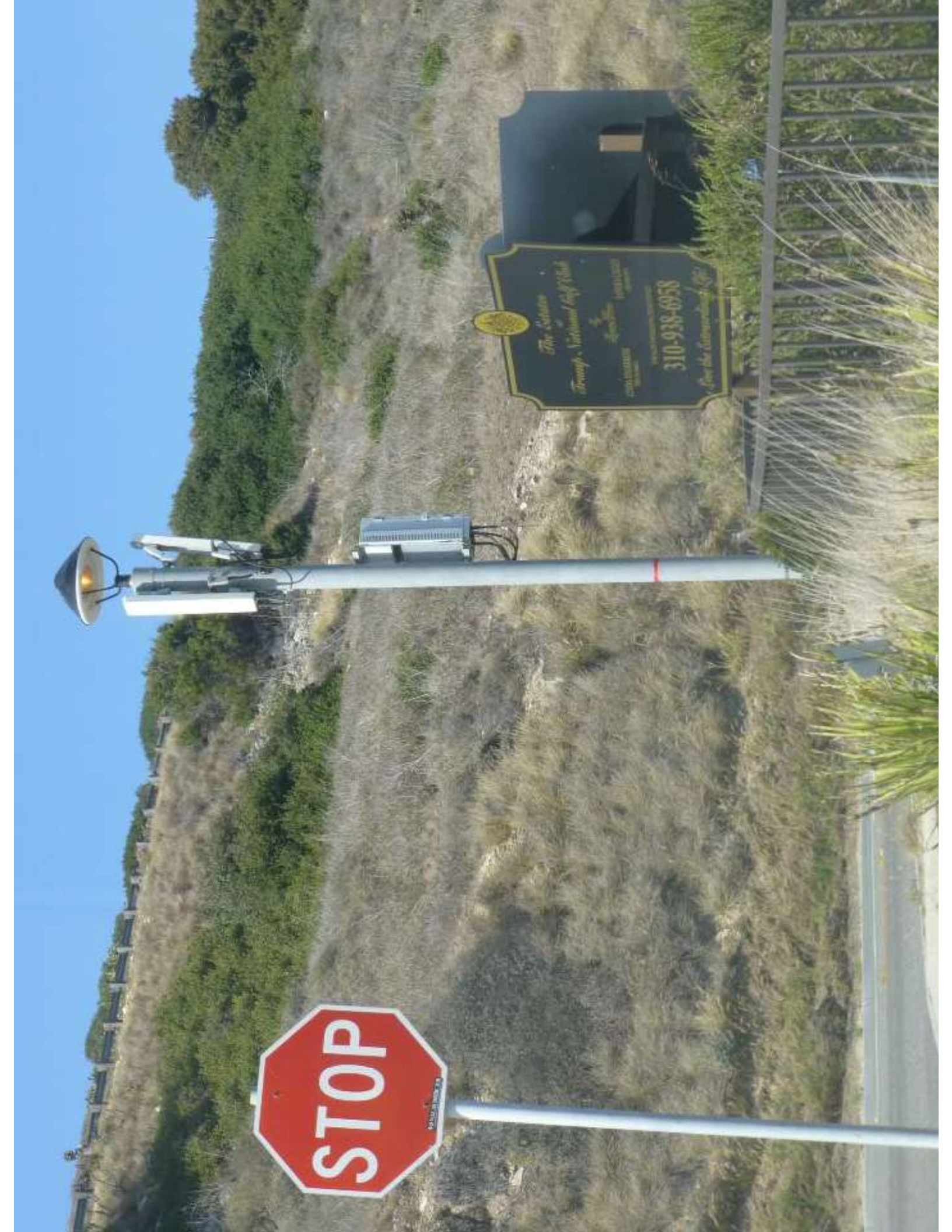


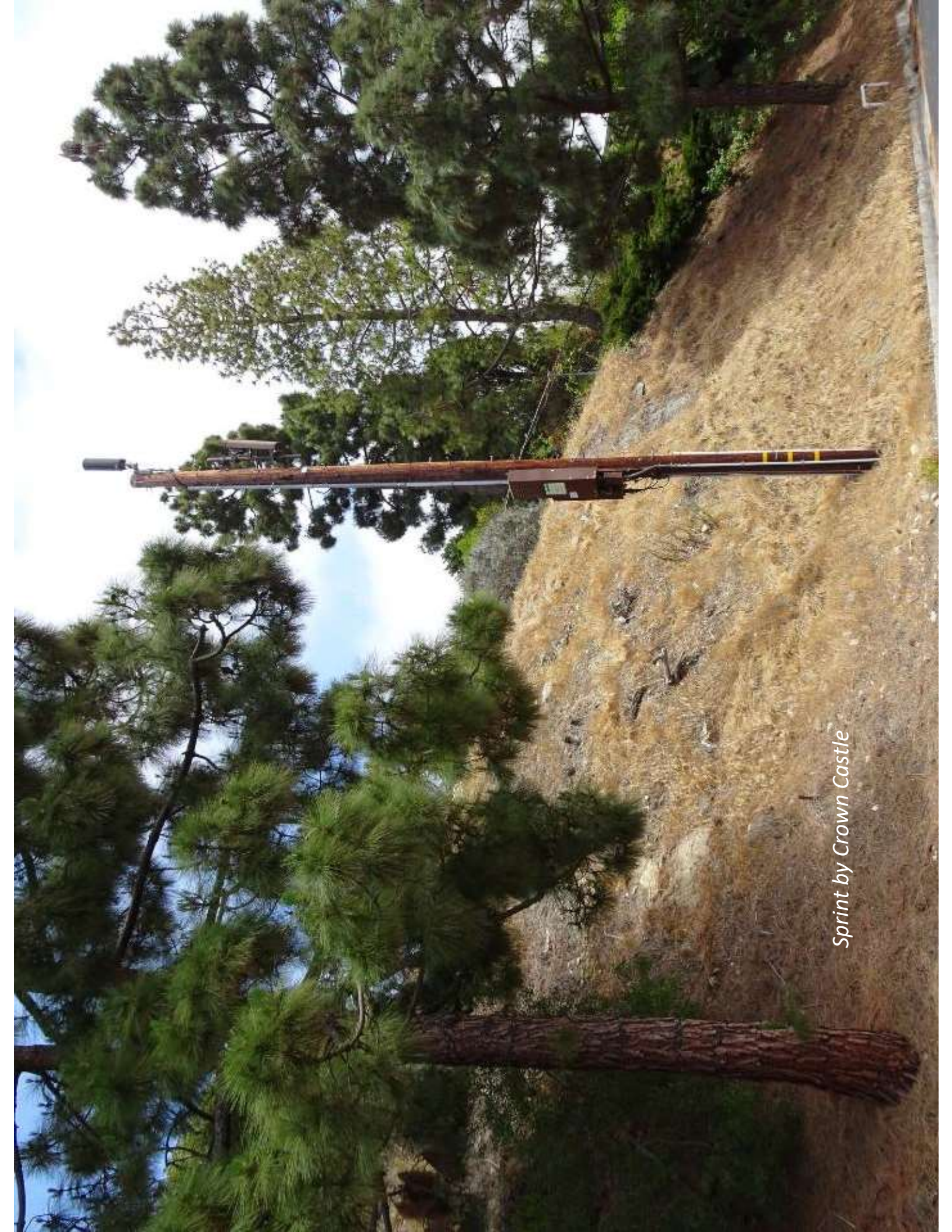
T-Mobile by Crown Castle





T-Mobile by Crown Castle





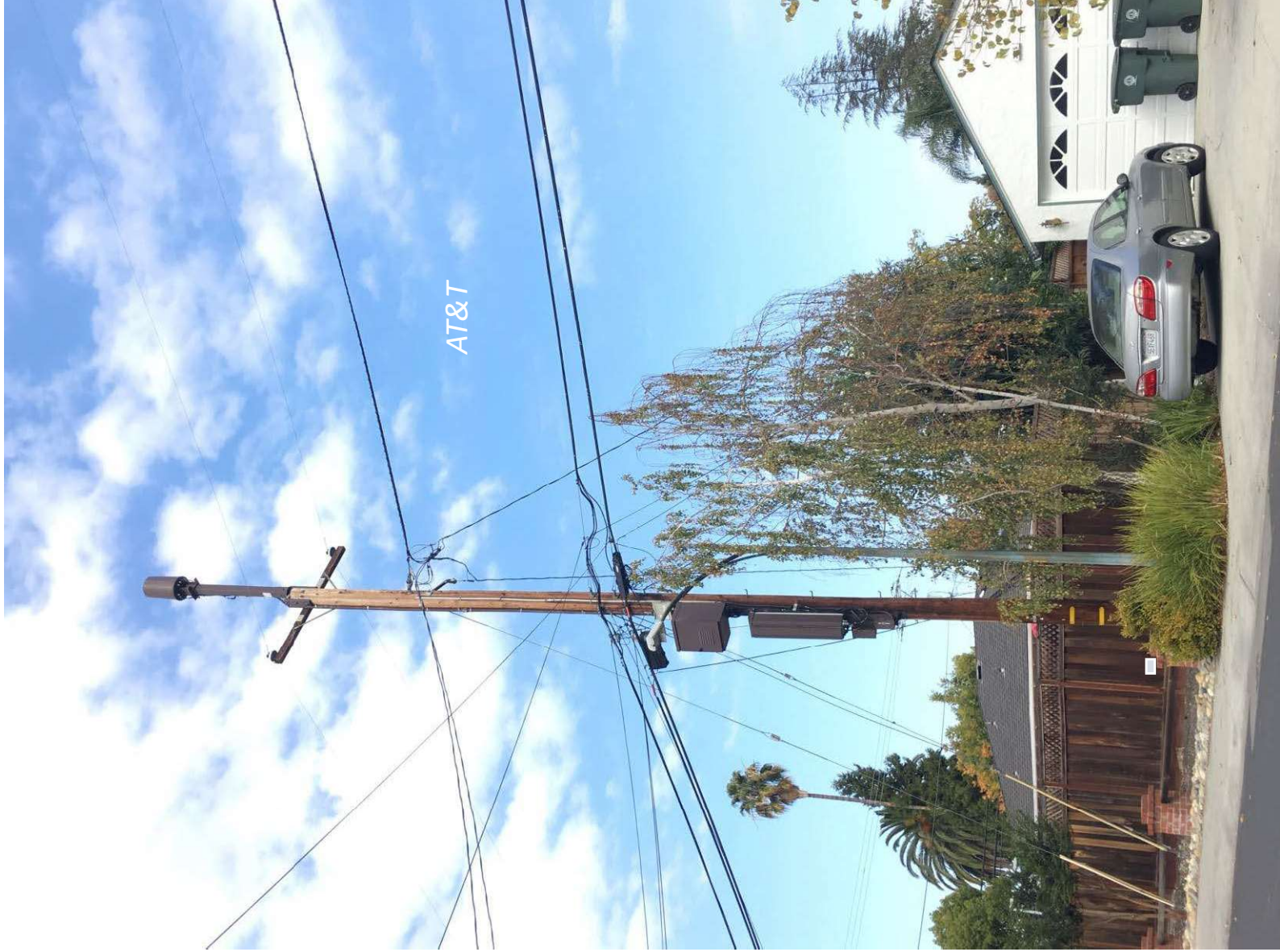
Sprint by Crown Castle™

*Pole put in by
Mobilitie; not
shared*



*Sprint by
Mobilitie*

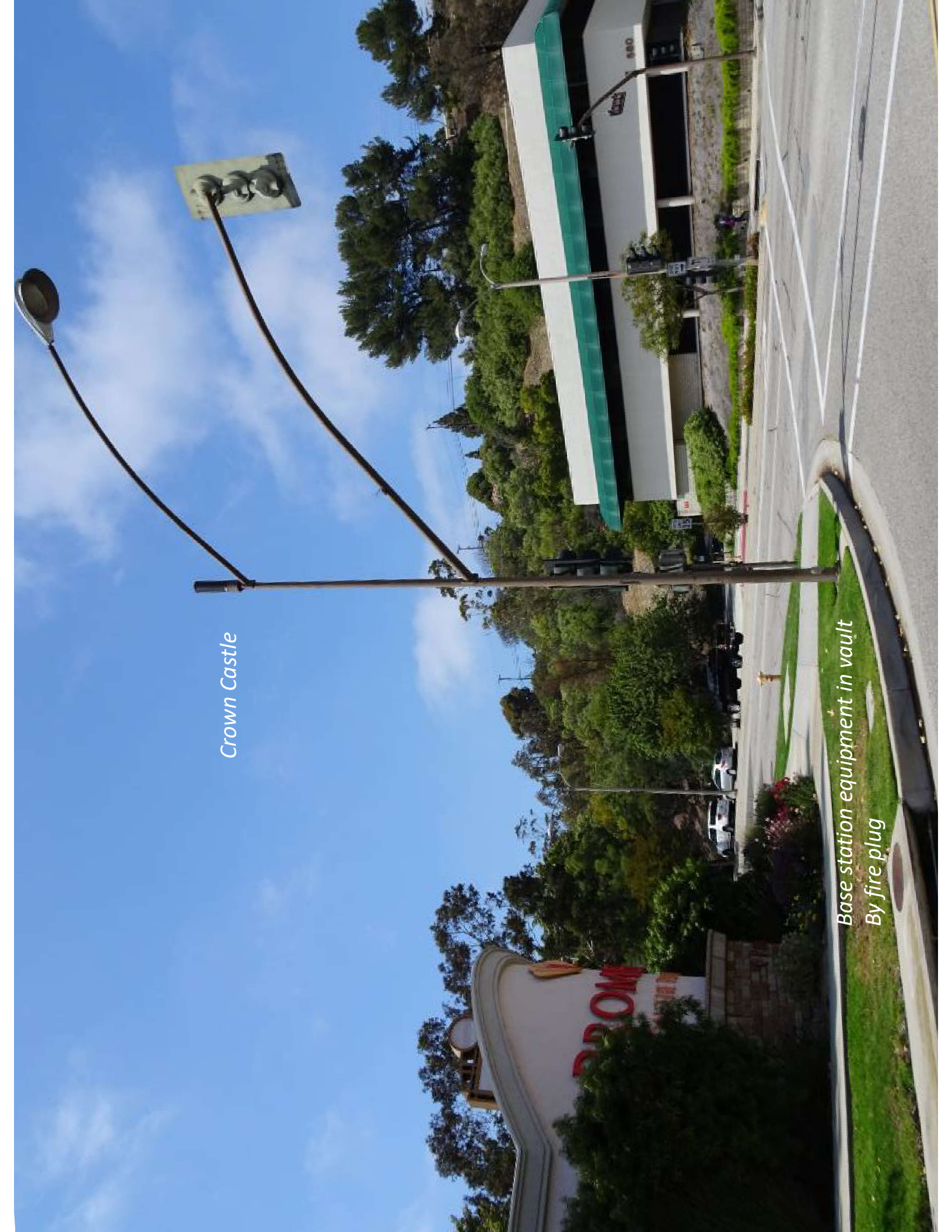


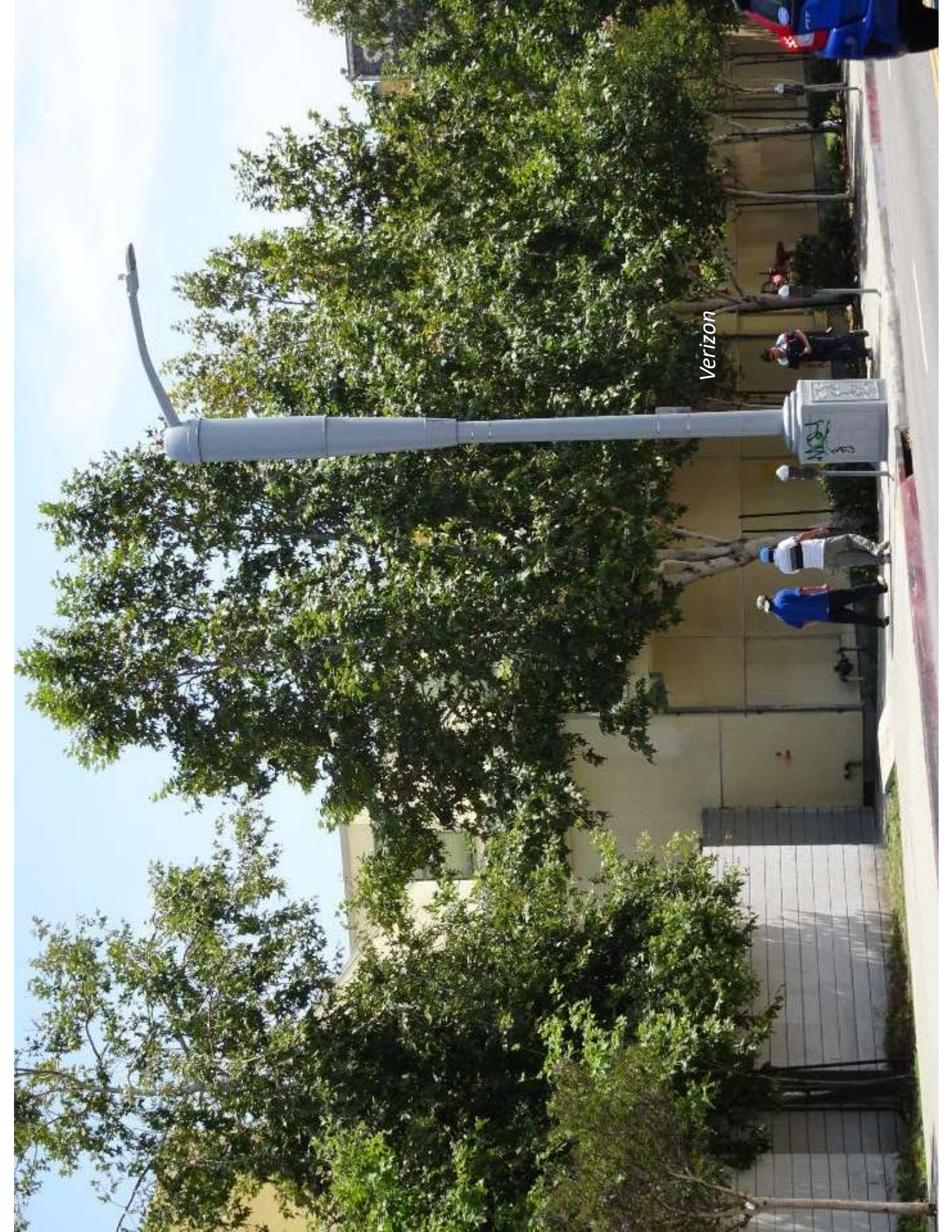


AT&T

Crown Castle

*Base station equipment in vault
By fire plug*

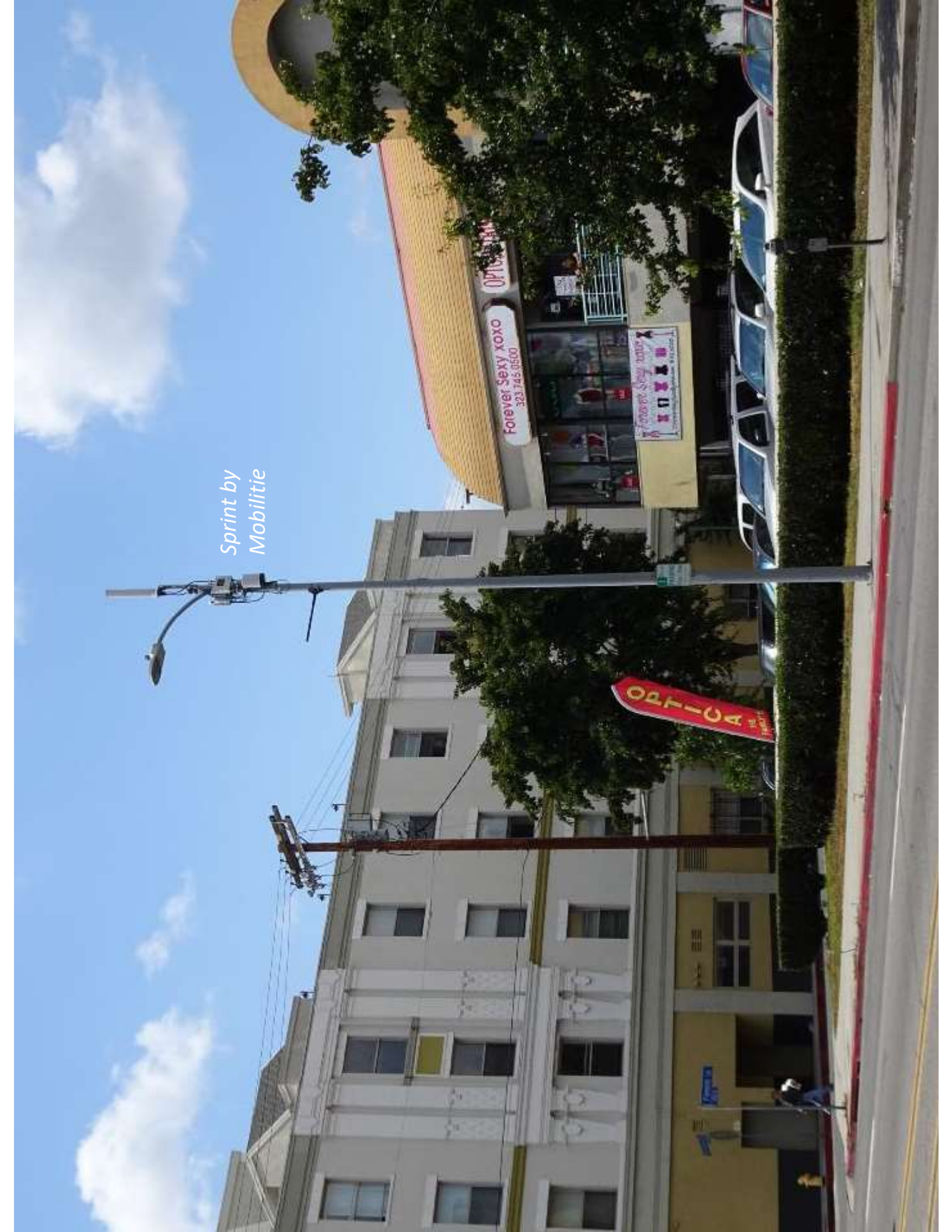




Verizon

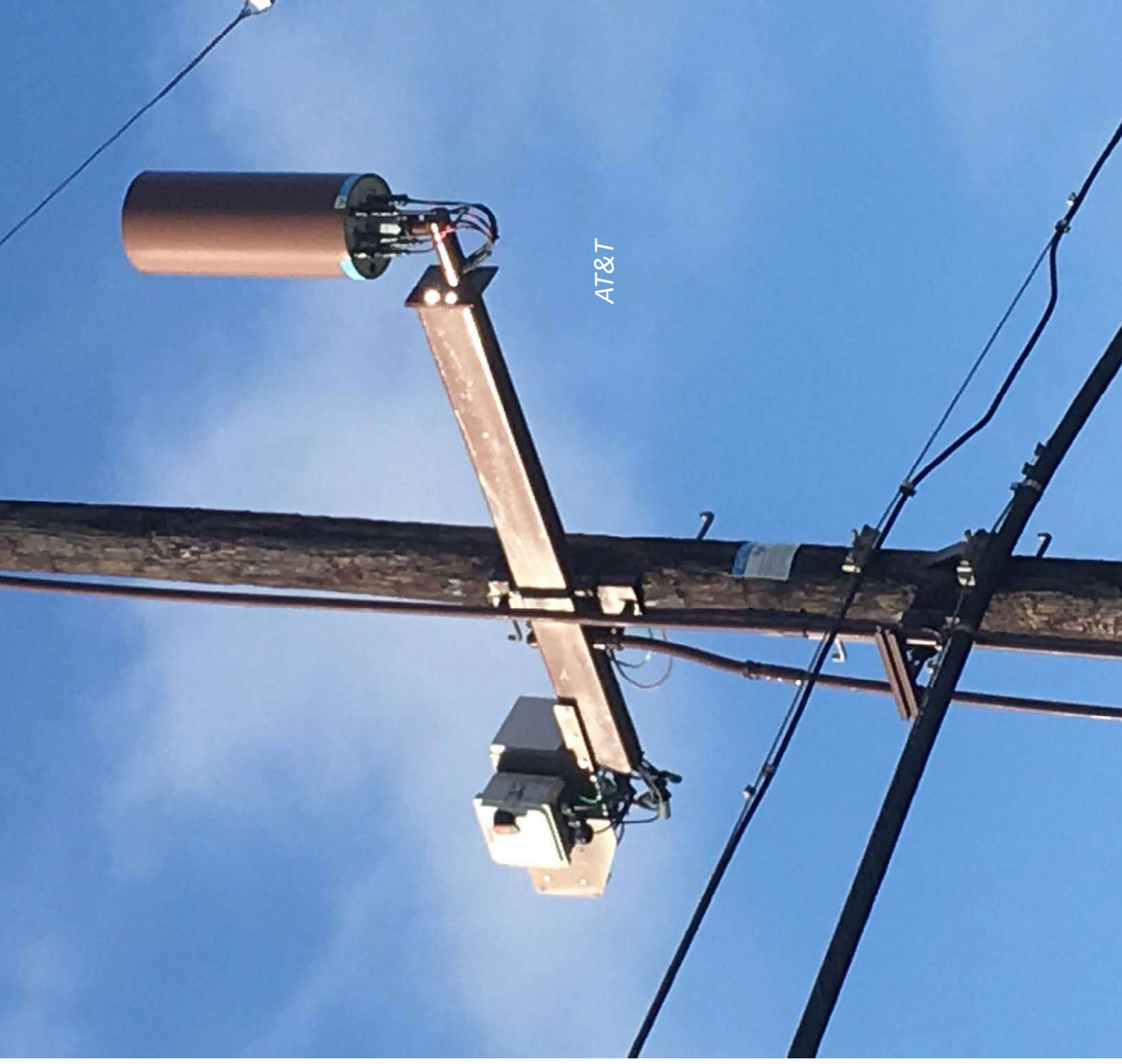


*Sprint by
Mobilitie*





*Sprint by
Mobilitie*



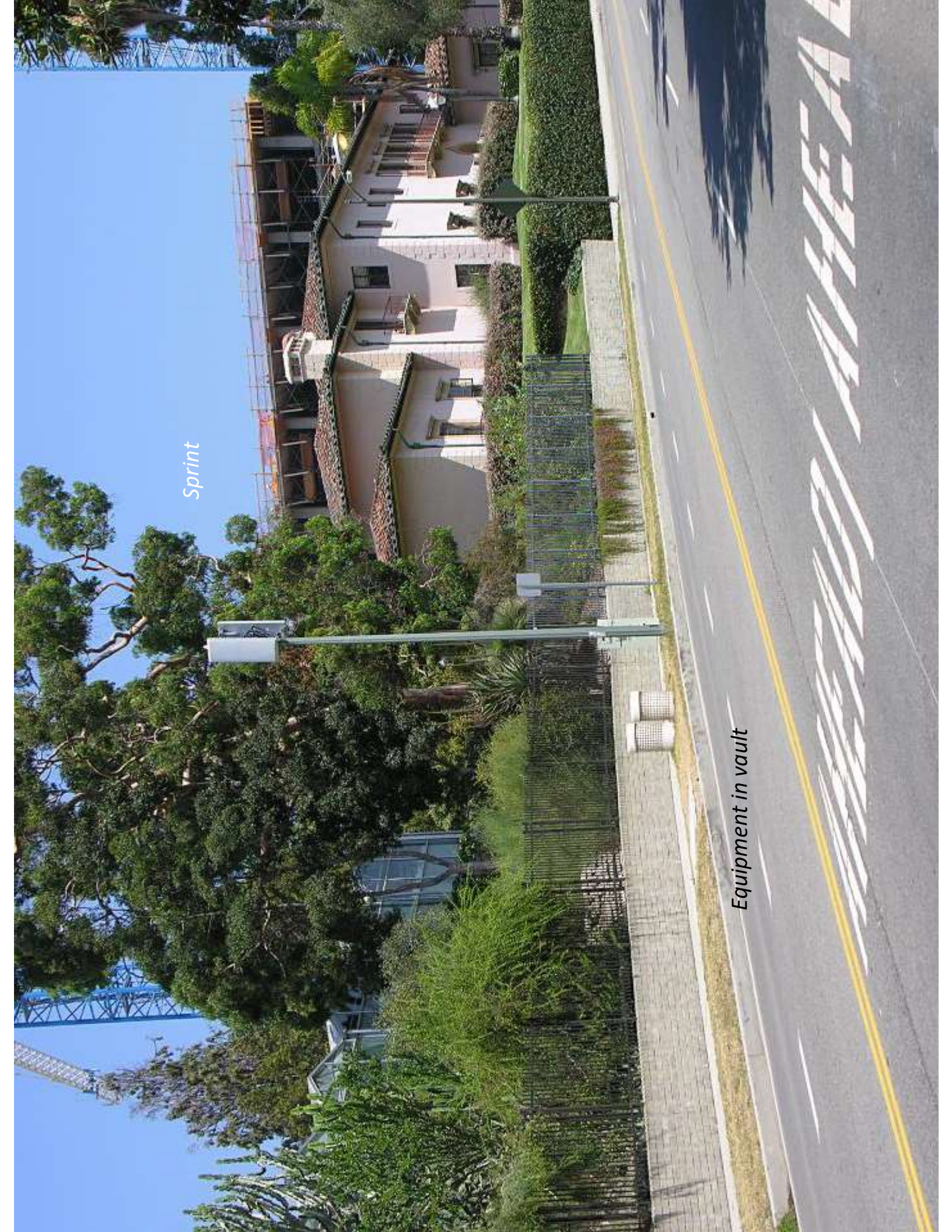
AT&T



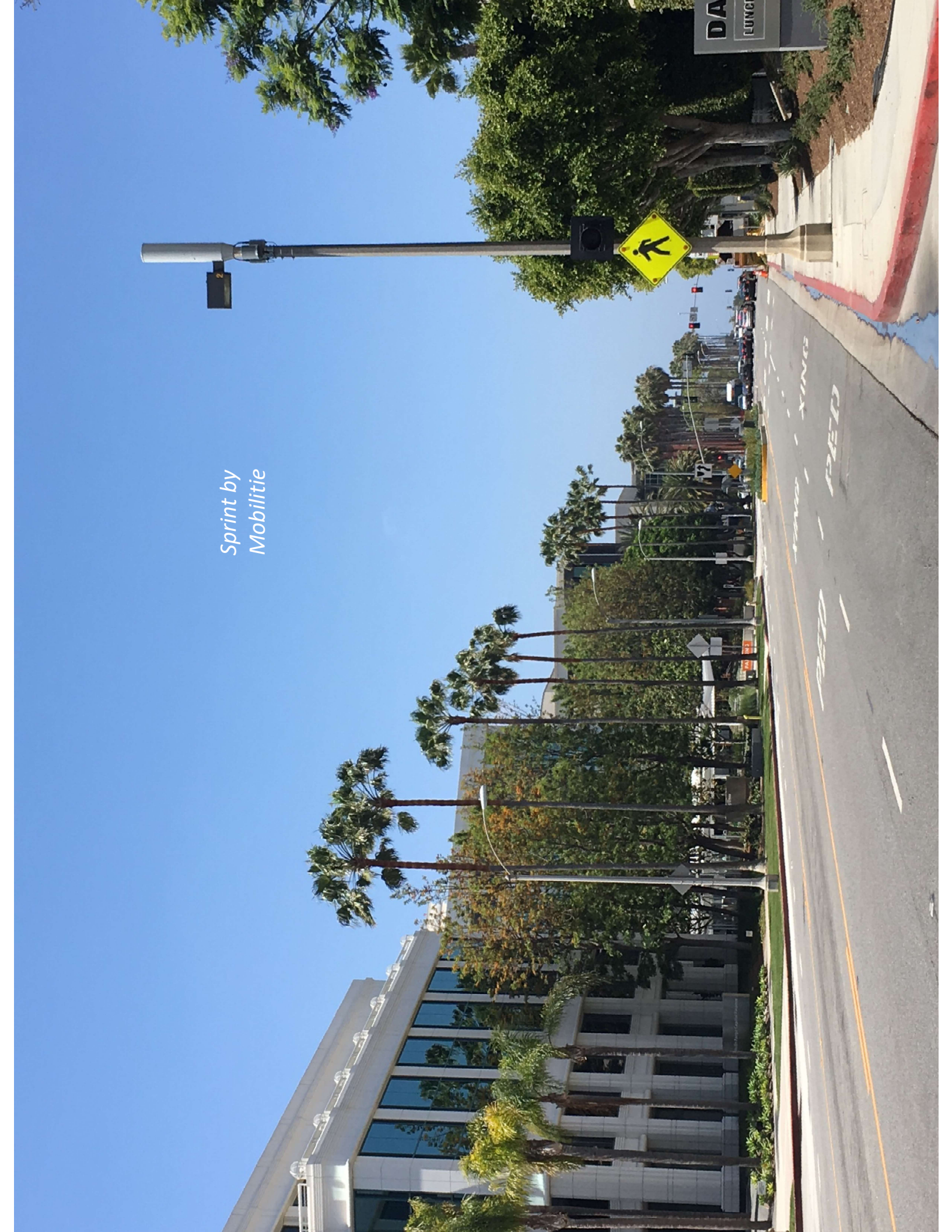
Verizon

Sprint

Equipment in vault



Sprint by
Mobilitie





Sprint by
Mobilitie

AT&T.

DO NOT
BLOCK
INTERSECTION

Amherst Av
1003

AVAILABLE
FOR LEASE BY OWNER
1,500 SQ. FT.
310 478-3200
310 478-4138

Business Office MOBILE
CLEANERS

School of Business
Schwarz

DO NOT
BLOCK
INTERSECTION

DO NOT
BLOCK
INTERSECTION

Los Angeles, CA

T-Mobile by Crown Castle

AT&T

Los Angeles, CA

