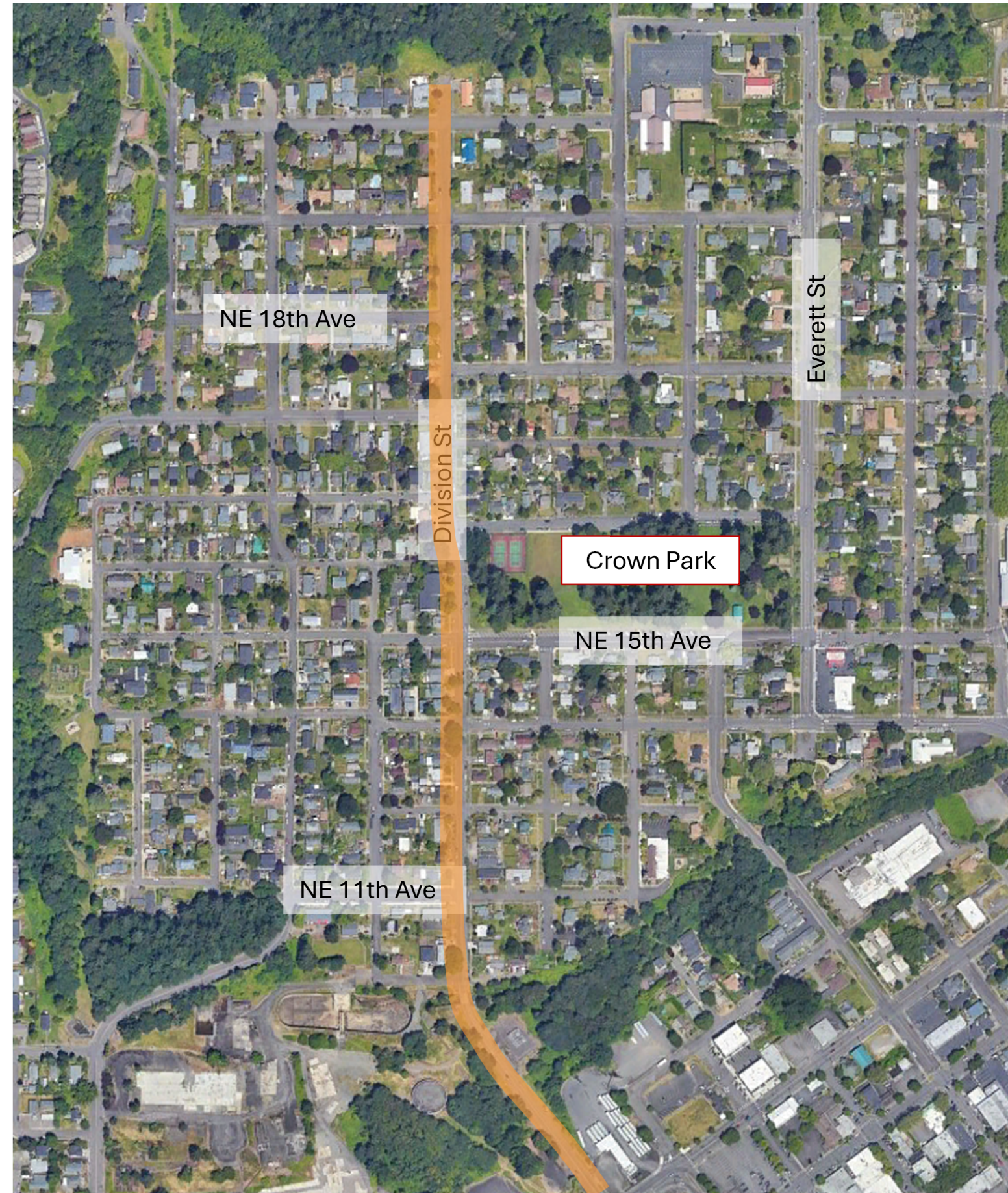
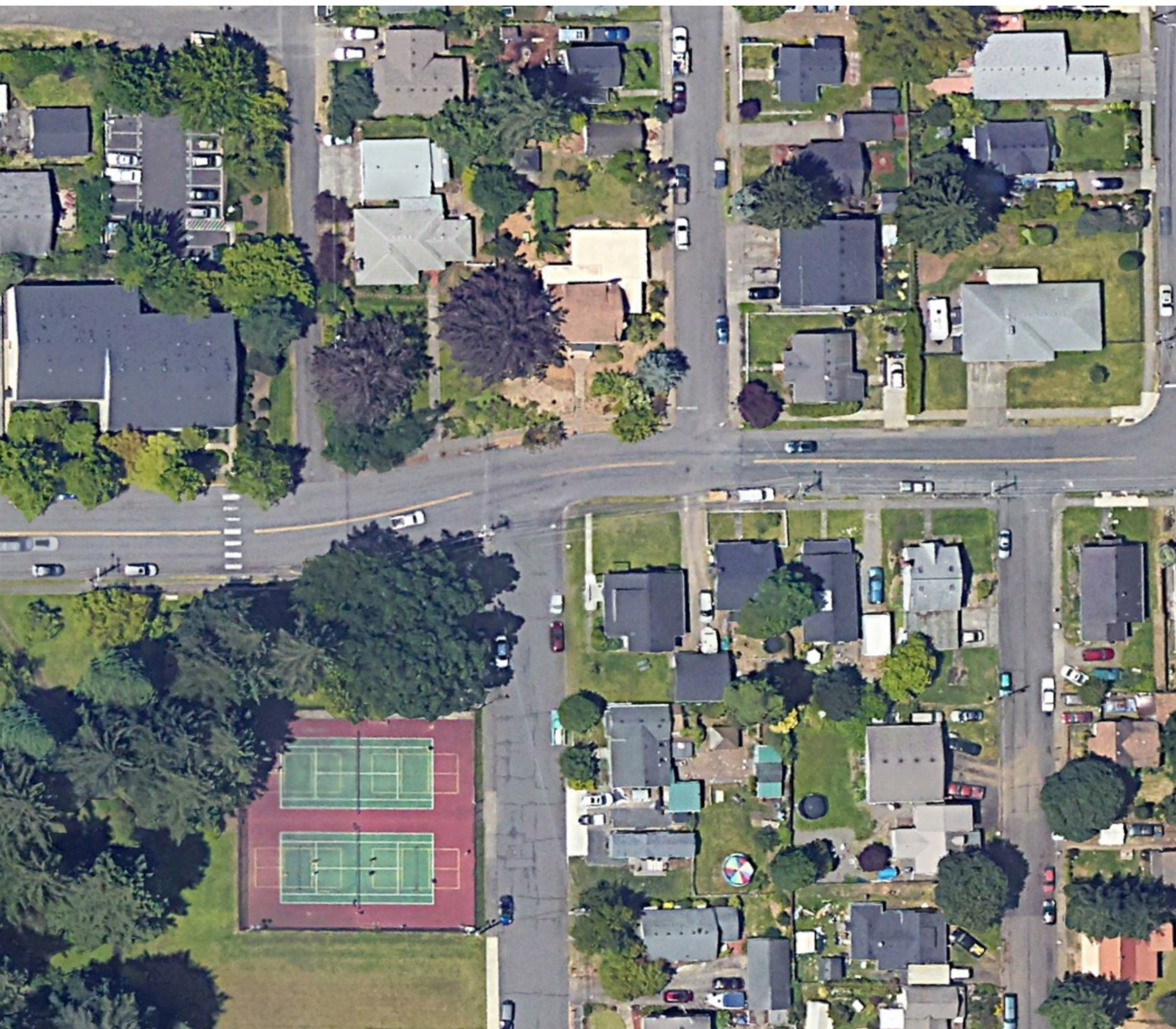


# Division St Safety

- 17<sup>th</sup> Ave Intersection
- Safety Grant Application





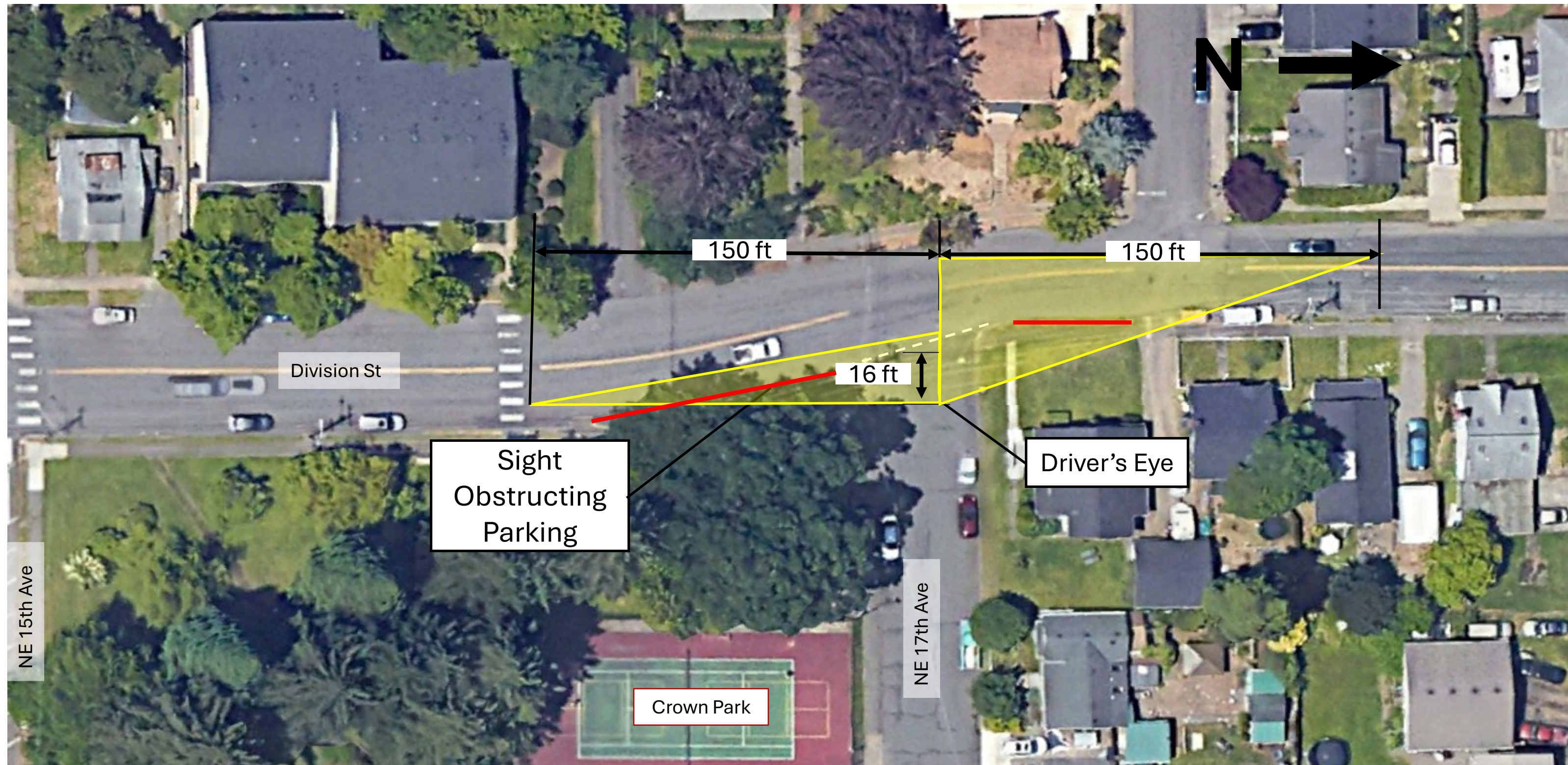


## Division Street and NE 17<sup>th</sup> Ave

- Sight Distance
- Signage
- Crosswalk

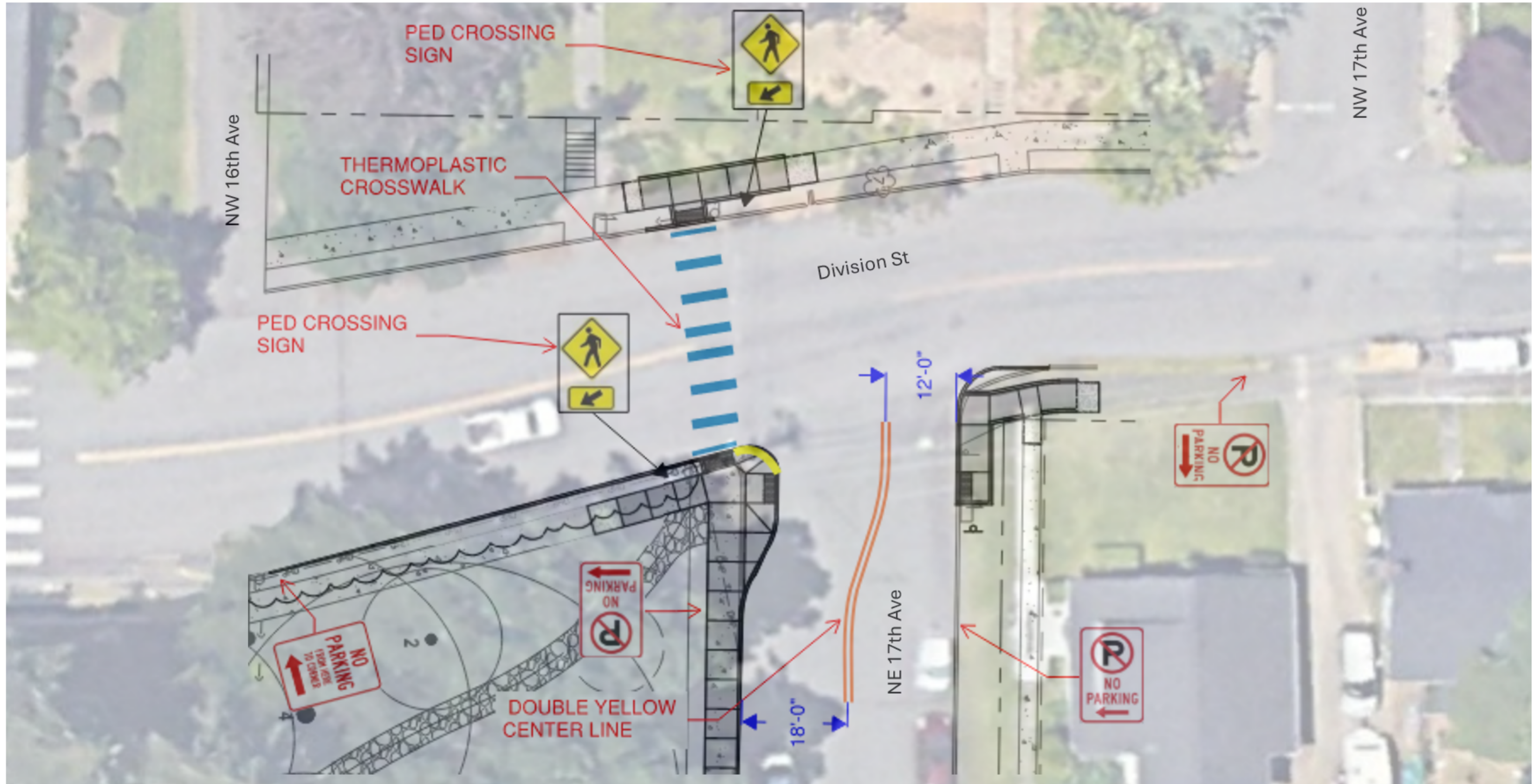


# Design Stopping Sight Distance Requirement

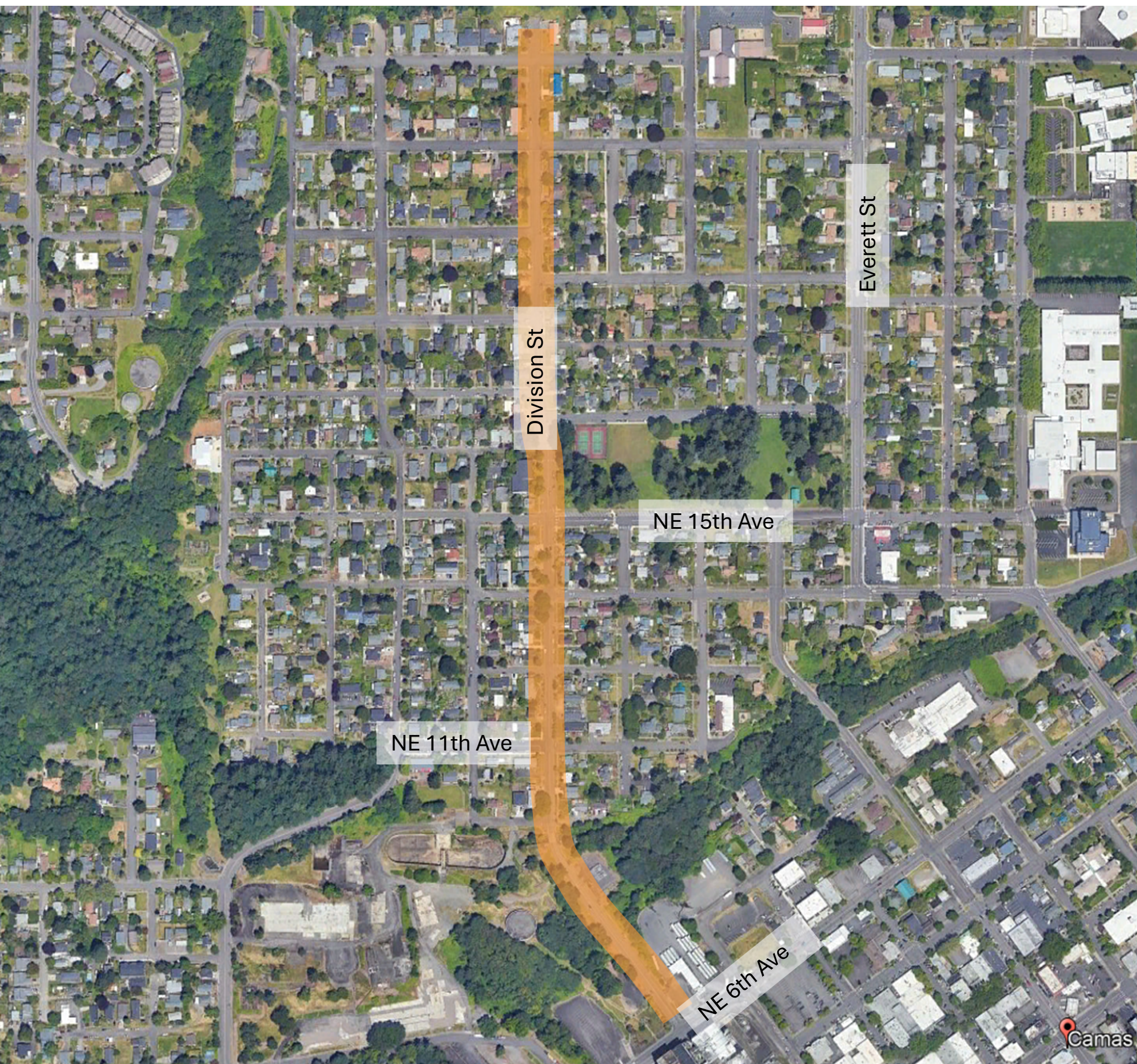




# Design Stopping Sight Distance Requirement







# Division St Safety Improvements (6<sup>th</sup> Ave to 22<sup>nd</sup> Ave) Grant Application



# City of Camas - Division Street Safety Improvements

DIVISION STREET (6<sup>TH</sup> AVENUE TO 22<sup>ND</sup> AVENUE)

## CRASH SUMMARY

(2018 - 2022)



14

Total  
Crashes



0

Fatal or Serious  
Injury Crashes



5

Bicycle & Pedestrian  
Crashes



0

Bicycle & Pedestrian  
Fatal or Serious  
Injury Crashes

### LOCATION ATTRIBUTES

Near School

Near Park

### RELEVANT GRANT OPPORTUNITIES

HSIP

ATP

SS4A

SRTS



## Location Summary

### Contributing Factors

- Right of way violations

### Crash Types

- Angle crashes
- Hit object crashes
- Pedestrian/bicycle crashes

### Roadway & Contextual Factors

- Residential corridor
- Two lane road with parking on both sides from 11th St to 22nd Avenue
- 25 mph



## Goals

- 1 Increase pedestrian and bicycle visibility with enhanced crossings and bike lanes.
- 2 Reduce speeds and angle crashes along the corridor with traffic calming treatments.

| COUNTERMEASURE                    | CONCERN   | TIME FRAME | CRASH REDUCTION FACTOR |
|-----------------------------------|---|------------|------------------------|
| Install bike lane                 | Bicycle right of way                                  | Near term  | 45%                    |
| High visibility crosswalks        | Pedestrian visibility and right of way                | Near term  | 15%                    |
| Lane reconfiguration              | Unsafe speeds, bicycle right of way                   | Near term  | 29%                    |
| Install curb bulbouts             | Pedestrian visibility and right of way, unsafe speeds | Near term  | 37%                    |
| Install pedestrian scale lighting | Pedestrian visibility                                 | Near term  | 42%                    |



## + Whole-Corridor Improvements

- Road reconfiguration – Consolidate parking; only allow on east side of Division Street
- Install bicycle lane on the right side of Division St (uphill/ northbound direction)
- Install pedestrian crossings and curb bulbouts along the corridor

### CROSS SECTION



- Compliant ramp
- Non Compliant ramp (21)
- ✗ Missing ramp (4)
- | Missing Sidewalk

