

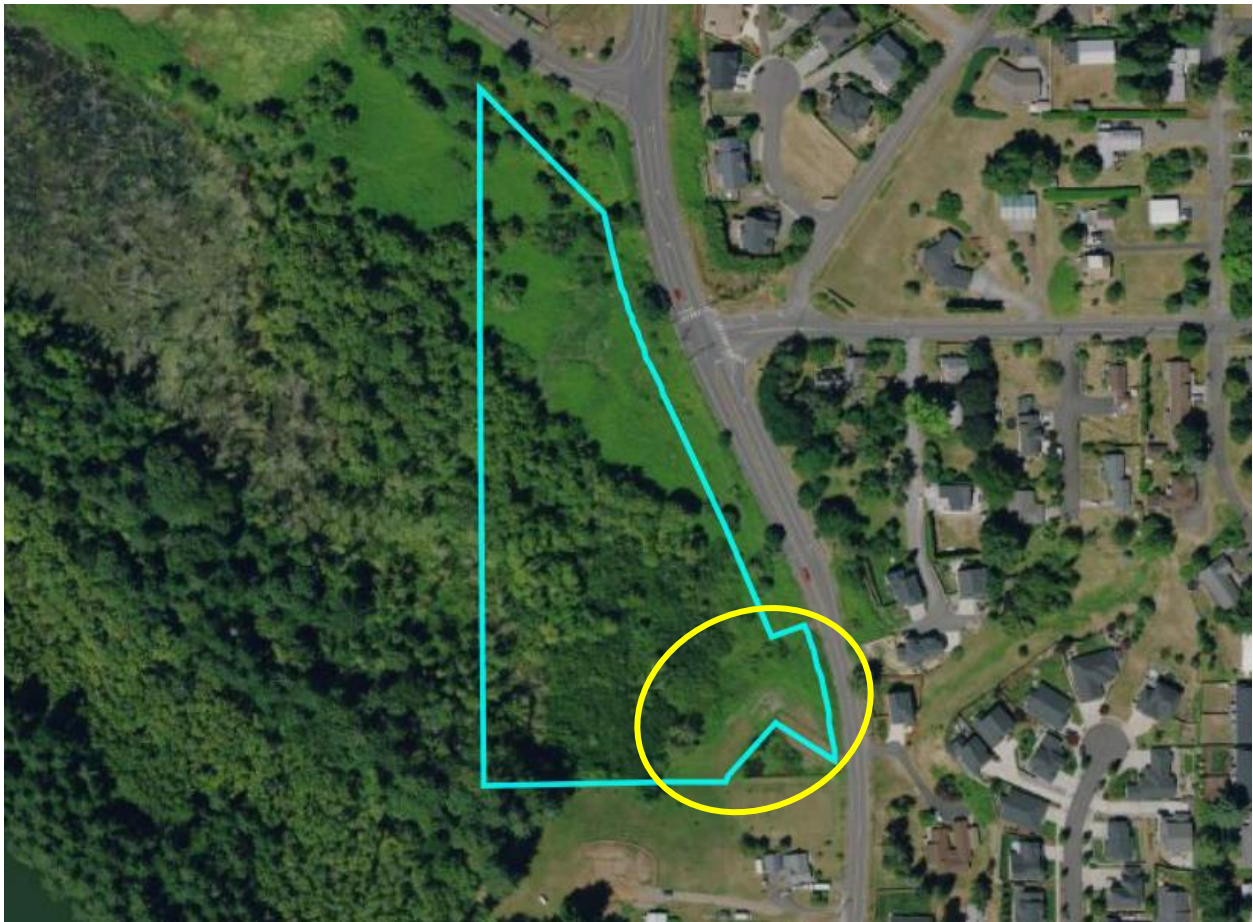
# Watershed Alliance of SW WA Project Scope with City of Camas

## Everett and Leadbetter Planting Project

Property Identification Number: 178253000

This project includes removing invasive blackberry, planning a planting event, purchasing plants and planting them. Outreach and planning for the event includes the building of a Camas-focused volunteer base, which we can use for future projects with the City of Camas.

This event would be for the southern section of the property (circled in yellow below).



This area is approximately a half-acre in area. It can fit approximately 1,500 plants.

## Everett and Leadbetter year 1

Item	Units	Cost per unit	Total
Invasive removal			\$4,340.00
Plants (1 gal pots)	1,500	\$3.25	\$5,289.38
Tools			\$1,193.50
Outreach/Planning/event (Labor)	300	\$23.73	\$7,119.00
Admin	24	\$37.00	\$888.00
Overhead		24%	\$1,921.68
<b>Total</b>			<b>\$20,751.56</b>

## Everett and Leadbetter year 2

This is our proposal for the second year of restoration. There is a reduction in hours and materials due to some of the work being done in the first year.

Item	Units	Cost per unit	Total
Invasive removal			\$2,170.00
Plants (1 gal pots)	375	\$3.25	\$1,322.34
Outreach/event (Labor)	200	\$23.73	\$4,746.00
Admin	24	\$37.00	\$963.48
Overhead		24%	\$1,139.04
<b>Total</b>			<b>\$10,340.86</b>

## Lake Clean-Up Event

This is our proposal for having a major hand in planning the event. If we are a smaller partner, costs would reflection that reduction in scope.

Task	Hours	Wage	Total
Outreach/Planning/event (labor)	26	\$23.73	\$616.98
Admin	7	\$37.00	\$259.00
Overhead		24%	\$210.24
<b>Total</b>			<b>\$1,086.22</b>

## Washougal River Greenway Trail Restoration at Beaver Park

This involves the planning of the restoration of a portion of Beaver Park on Washougal River.

<b>Task</b>	<b>Hours</b>	<b>Wage</b>	<b>Total</b>
Site Assessment/Plan Development (labor)	20	\$23.73	\$474.60
Admin	5	\$37.00	\$185.00
Overhead		24%	\$113.90
<b>Total</b>			<b>\$588.50</b>

<b>Task</b>	<b>Total cost for all projects</b>
Everett & Leadbetter Year 1	\$20,751.56
Everett & Leadbetter Year 2	\$10,340.86
Lake Clean-Up	\$1,086.22
Beaver Park Plan	\$588.50
<b>Total</b>	<b>\$ 32,767.14</b>