

# Parks: Regional Funding Task Team

---

Public Works – Parks and Nature Division

May 20, 2026



# Agenda

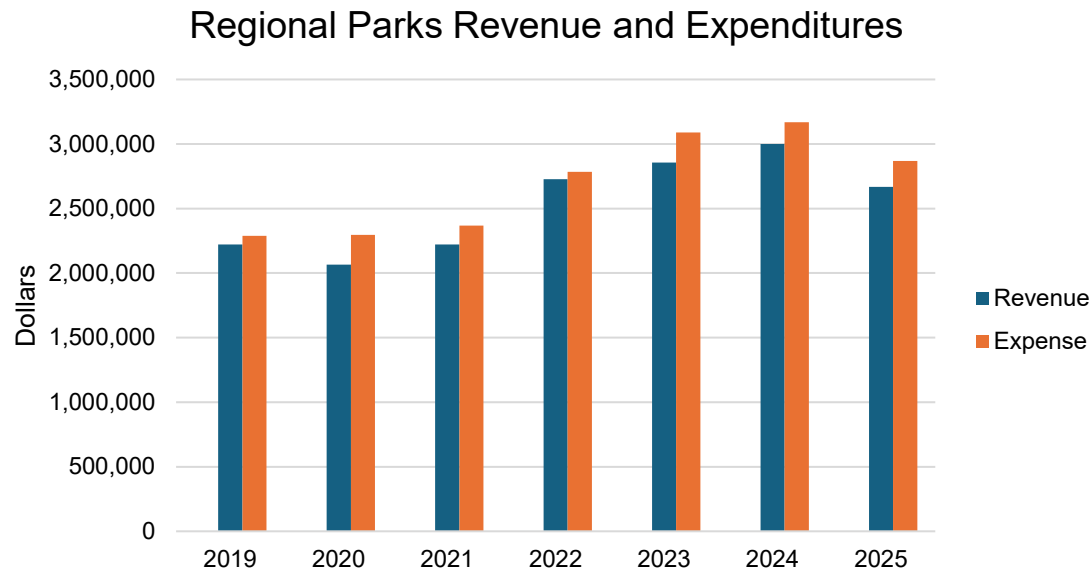
---

- Summary of Needs
- National Benchmarking
- WA State Benchmarking
- Funding Models Comparison
- Recommended Next Steps



# Summary of Needs – Clark County

- Clark County parks system is not meeting its existing needs due to a lack of available funding, rising costs, and rapid population growth.
- For the past 5 years, the County has had to use reserve funds just to cover the basic services at our Regional Parks.

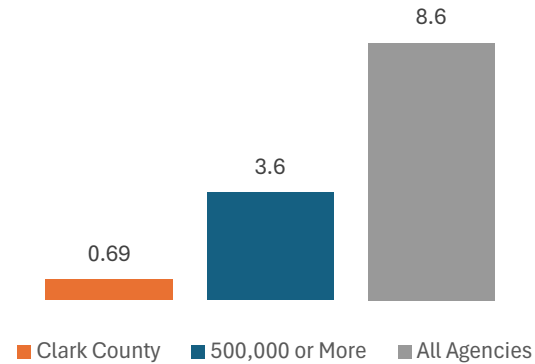


# Summary of Needs – Clark County

- With an already lean staff, there are no longer ways to cut costs.
- Park up-keep has suffered.
- Maintenance has been deferred.



FTE per 10,000 residents compared to national median



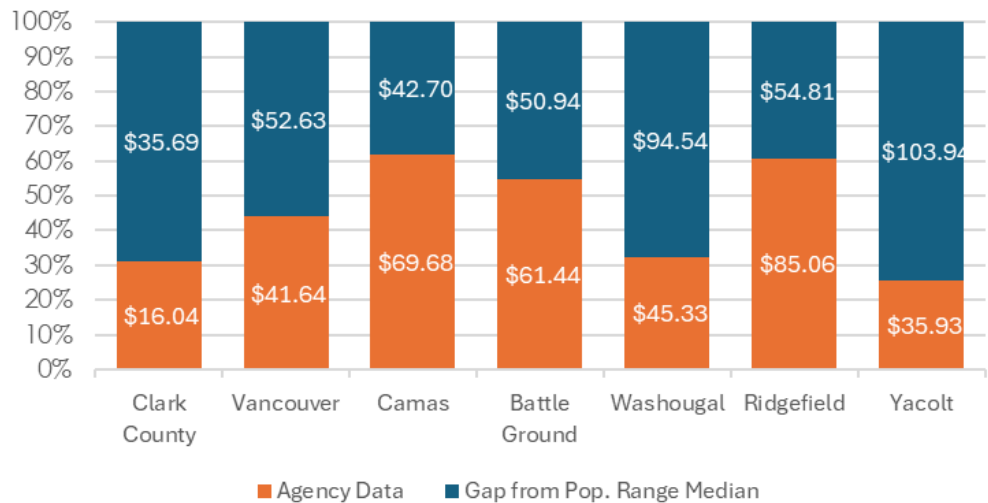
33% of daily tasks assigned are not being completed




# National Benchmarking – All regional providers

## Parks Operating Expenditures Per Capita

Median values: \$51.73 \$94.27 \$112.38 \$112.38 \$139.87 \$139.87 \$139.87



**All park systems are below the national median for operating expenditures of similar populations.**

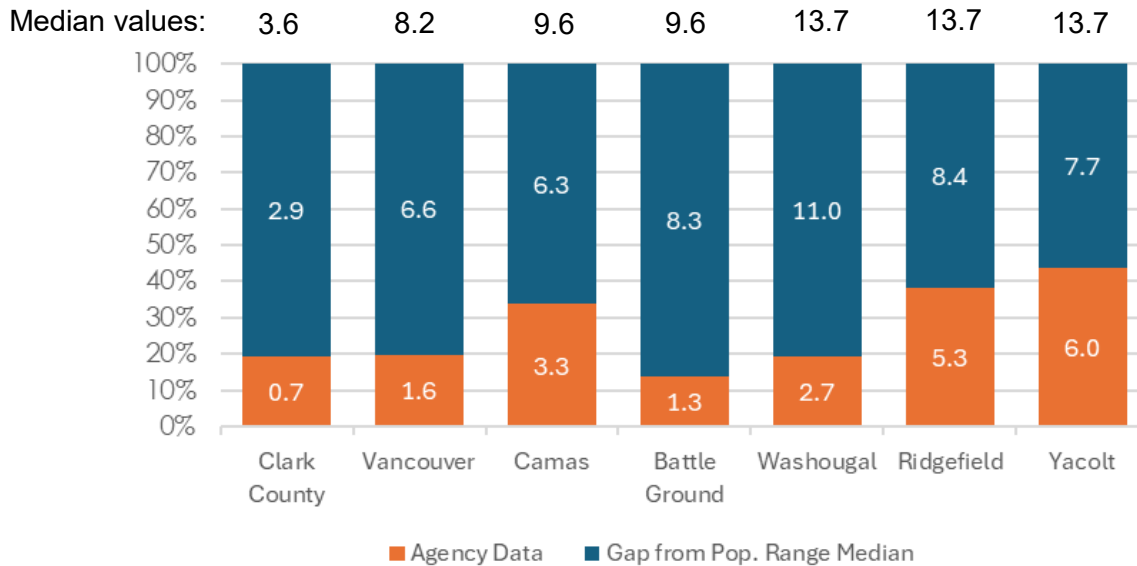


Each park system compared their metrics to the national median for communities of their size. Park system data are plotted in orange and the gap to meet the national median is plotted in navy blue.



# National Benchmarking – All regional providers

## Full Time Employees per 10,000 residents



**All park systems are below the national median for full time employees (FTE) per 10,000.**

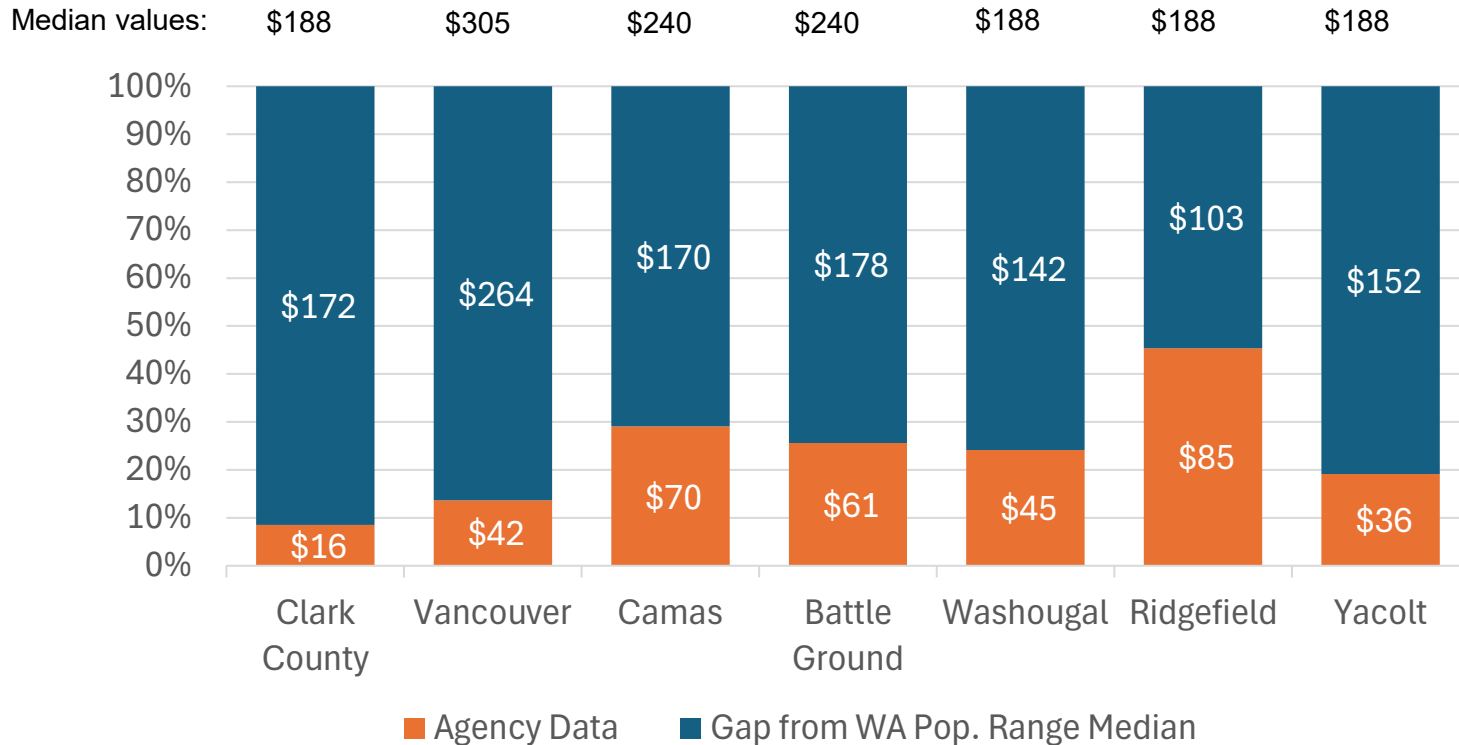


Each park system compared their metrics to the national median for communities of their size. Park system data are plotted in orange and the gap to meet the national median is plotted in navy blue.



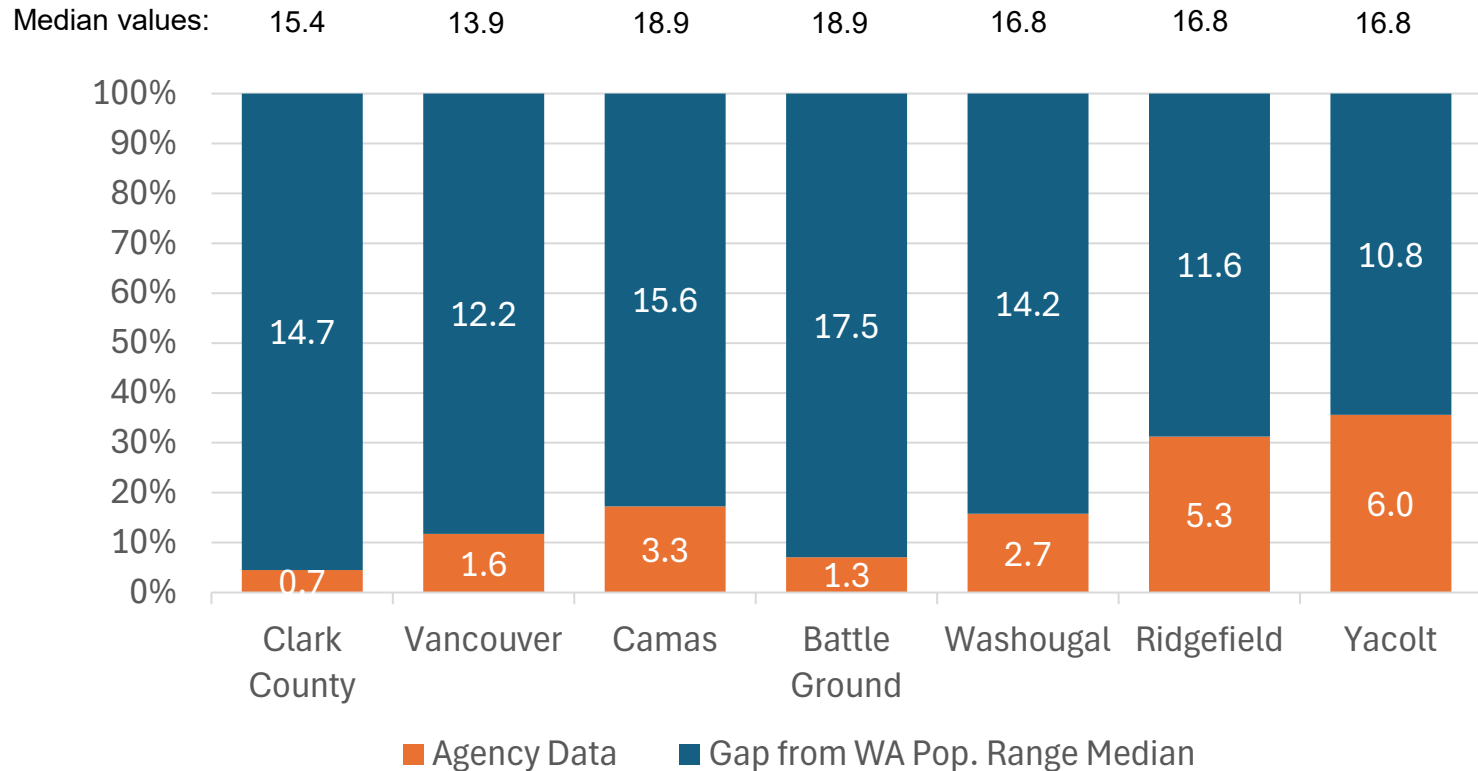
# WA State Benchmarking – All regional providers

## Parks Operating Expenditures Per Capita



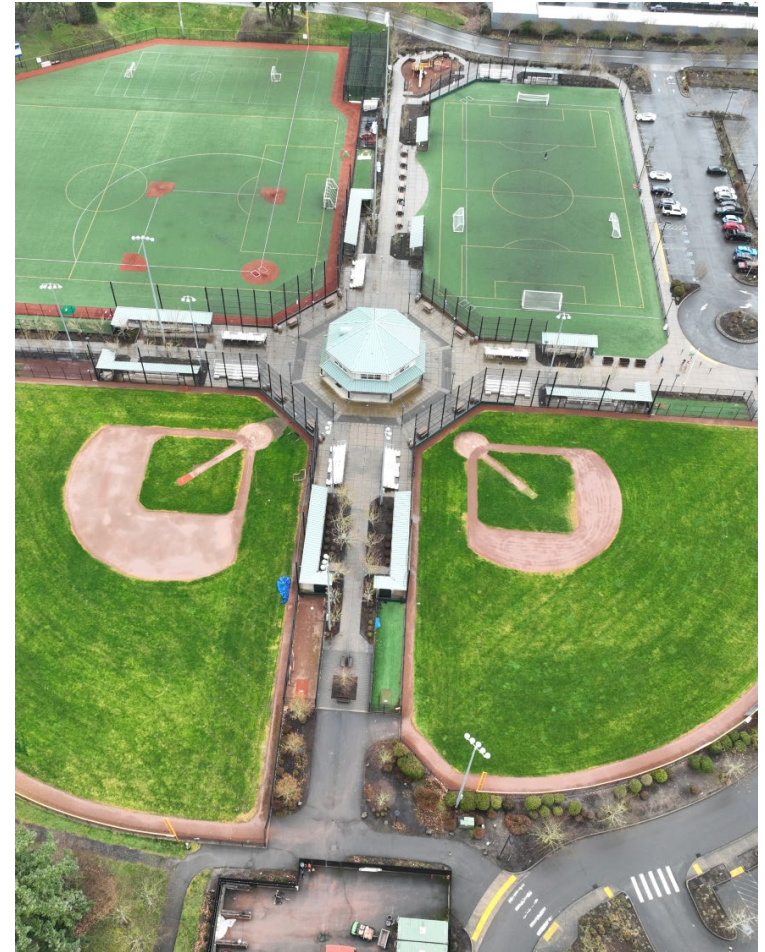
# WA State Benchmarking – All regional providers

## Full Time Employees per 10,000 residents



# Future Needs

- County expected to grow 34% over the next 20 years
- Parks systems need to grow to match these needs

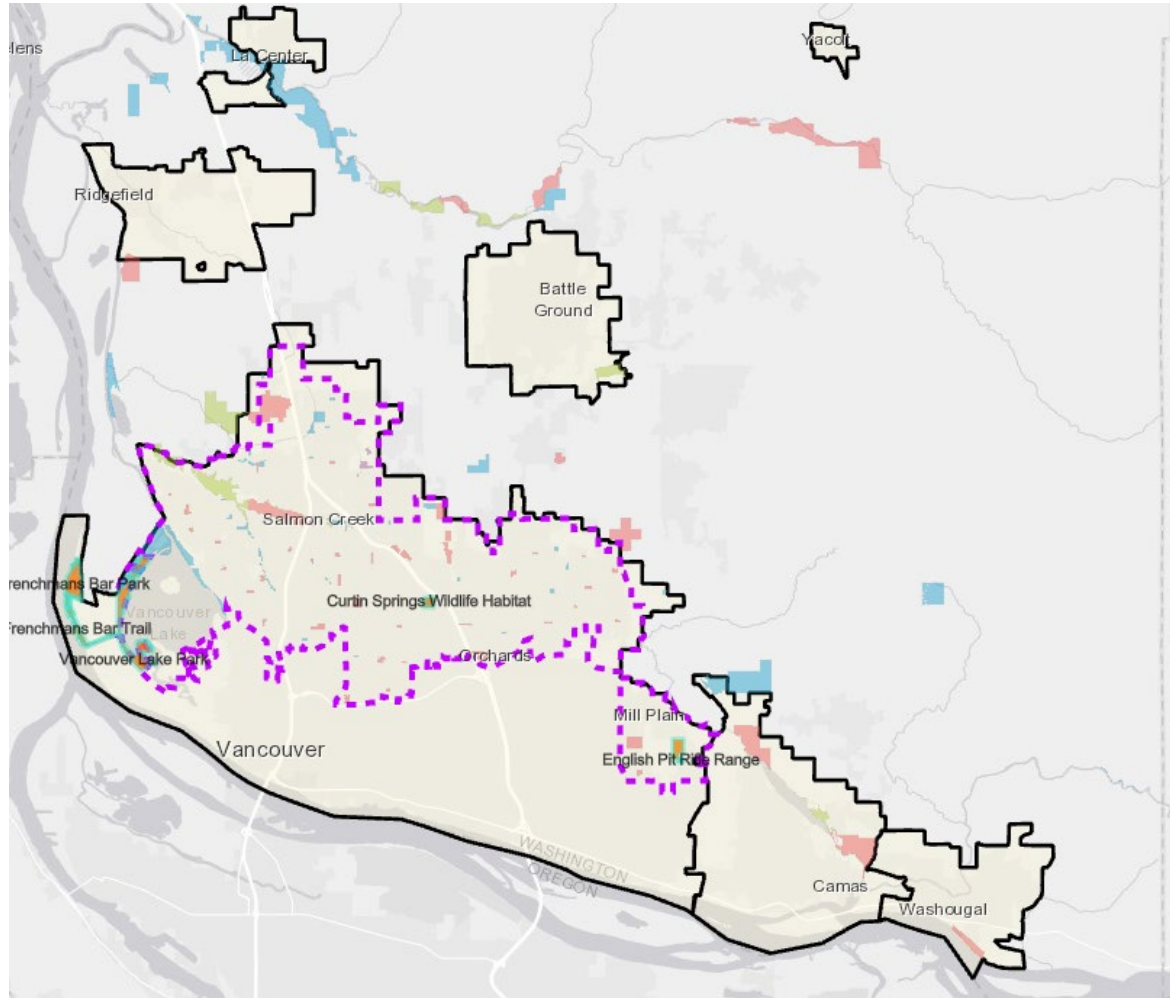


# Funding Models Comparison

|   | Metropolitan Parks District - funding structure | Regional Levy (county-wide) |
|---|---|-----------------------------|
| Requires voter-designated boundary  | ●   |                             |
| Funds cannot leave district   | ●   |                             |
| Permanent levy  | ●   | Voter renewal required      |
| Board/Council oversight   | ●   | ●                           |
| Potential for shared revenue  | ●   | ●                           |
| Potential for shared resources  | ●   | ●                           |
| Funds can be used for operations (both parks and recreational services) and capital | ●   | ●                           |



# Existing MPD: Greater Clark Park District



# RECOMMENDED ACTIONS

---

1. **Conducting market research** to provide the data, feasibility evaluations, and **conducting public education** and other preparatory work needed for County Council to make a decision on a potential future ballot measure.
2. **Determining viability and process** for adopting either funding mechanism by conducting formal legal reviews.
3. **Developing a framework for revenue sharing** by directing county staff to continue to work with city representatives so that city park providers can also benefit from a potential revenue source dedicated to parks.



# Market Research

---

## What is it?

- An external agency that provides polling information on potential ballot measures
- Collects statistically valid survey data from County-wide population

## What will it provide?

- Feasibility
- Price sensitivity
- Community values and motivations
- Strategic timing
- Accountability benchmarking and baseline data for future evaluations of levy success
- Other preparatory work to establish a ballot measure



# Interlocal Agreement (ILA) Development

---

Interlocal agreements with participating cities to share some of the revenue if a ballot measure is approved

## **Revenue sharing model development includes:**

- Mechanics
- Calculation
- Clarification of intended use of funds
- Articulating autonomy within a shared purpose
- Specific mutual investment (regional parks, regional trails)
- Synchronization with City goals from County investment
- County commitments to cities



# Public Education and Outreach

---

## **Public Education includes:**

- Current under funding challenges
- Impacts of population growth on parks system
- Consequences if new funding is not secured
- Residents, businesses, cities, organizations, partners
- Social media, signage in parks, press releases



# Next Steps

---

- Market Research
- Public Outreach Strategy
  - Assets include signage, flyers, social media costs, etc.
- Staff Costs
- Ballot Costs

