



Everett Street Corridor Analysis Project Update

January 17, 2023, 4:30 PM
Camas City Council Workshop

Presented by:
Steve Wall & Jim Carothers, City of Camas
Greg Jellison & Cory Kratovil, PBS Engineering and Environmental



Tonight's Presentation

01



Welcome
& Introductions

02



Related
Projects

03



Purpose
& Goals

04



Timeline &
Outreach

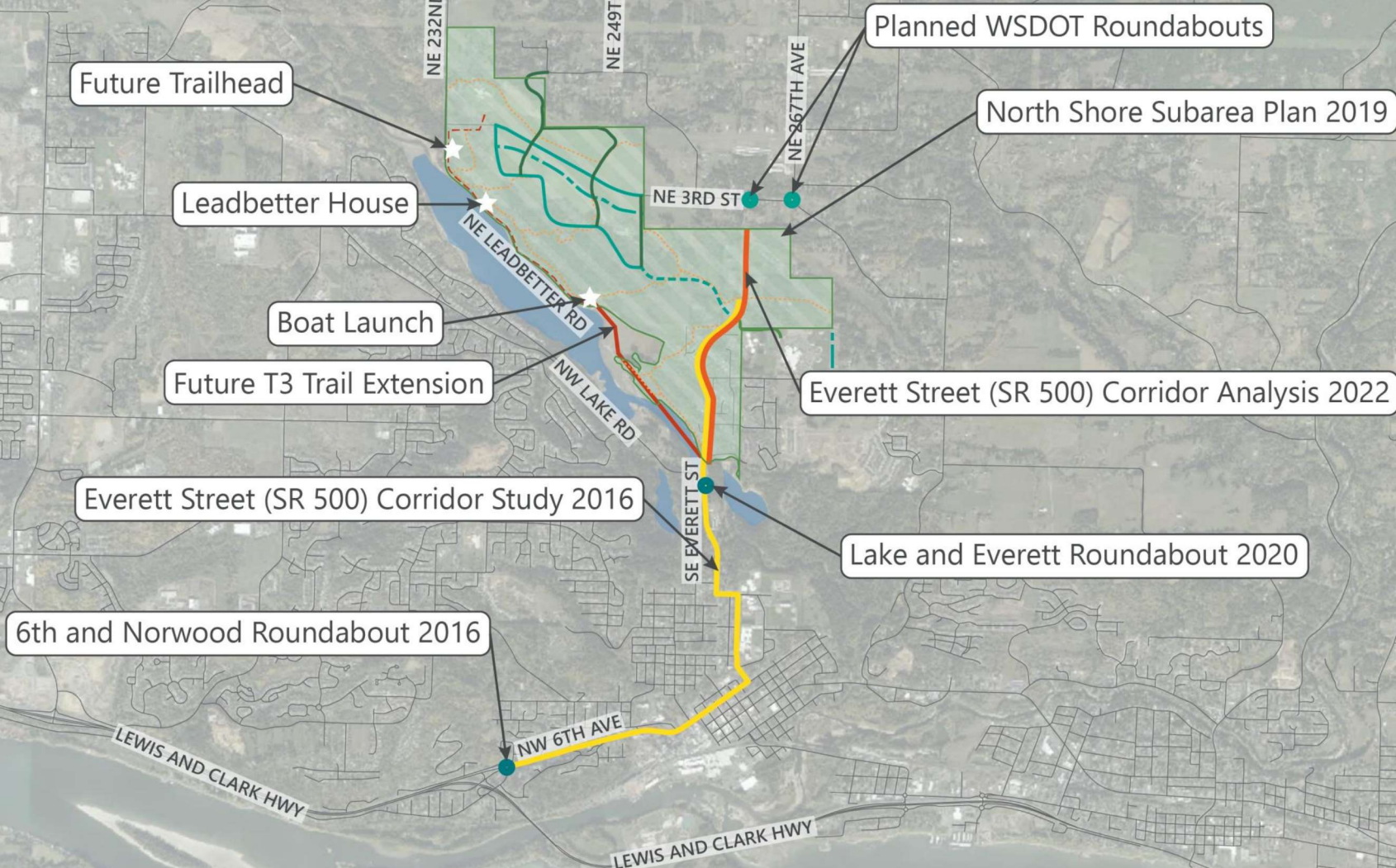
05



Question
& Answer



Related Projects



Everett Street Corridor Analysis

Lacamas Lake

NE Everett Street

NE 38th Avenue

NE 43rd Avenue

Round Lake



Camas High School

City of
Camas
WASHINGTON

 **PBS**

Project Purpose & Goals



- Analyze the Everett Street Corridor using public input, data, and technical guidance.
- Determine improvements for providing safe, efficient passage and access for all.

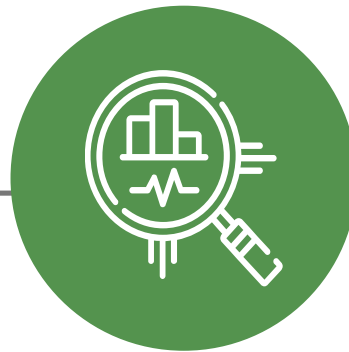


- Develop design concepts for consideration.
- Select one design concept (a “preferred alternative”).
- Further develop preferred alternative to develop budgetary cost estimates.

Focus Areas



Public
Involvement



Regional &
Local Impact



Project
Funding

Timeline

Phase 1 Aug – Nov 2022

- Data Collection – COMPLETE
- Project signs installed – COMPLETE
- Resident & business outreach – ONGOING
- Community open house 1 – COMPLETE
- Community survey 1 – COMPLETE

- Technical Advisory Committee (TAC) meeting 1 – COMPLETE
- Traffic analysis – ONGOING
- Alternatives Analysis
- City Council workshop
- Community open house 2

Phase 2 Dec 2022 – Apr 2023

Phase 3 May – Jun 2023

- Selection of preferred alternative
- Concept development
- Technical Advisory Committee (TAC) meeting 2
- City Council workshop 2

Community & Partner Outreach

Corridor Business Owners

- Acorn & the Oak
- Grown in Camas
- Lakeside Market
- Antiques & coffee shop in former L&L Auto Body – *In progress*
- Lacamas Counseling – *In progress*

Corridor Property Owners

- Owners of all properties located directly on the corridor, including churches

Community

- Residents, community members, and others interested in the project

Technical Advisory Committee

- Corridor Business Owners Representative
- Camas Fire Department
- Local Cycling Community
- CW Chamber of Commerce
- Downtown Camas Association
- Camas High School – Student Liaison
- Camas High School – Transportation
- Regional Transportation Council Staff
- Washington Dept. of Transportation – Engineering, Traffic & Planning
- Clark County Parks & Lands
- City of Camas – Parks & Recreation
- City of Camas – Community Development
- Community Members (2)

Key Themes of Outreach Events



Businesses & Property Owner Discussions

Property Impacts
Access During Construction
Parking & Parking Signage
Business Vitality
Noise
Drainage
Lighting

Design Features
& Constraints

Mobility & Safety of
Pedestrians & Drivers
Connection to Recreation,
Businesses & Schools
North Shore Planning
Input from WSDOT & Others
Community Growth
& Comprehensive
Planning
Timeline

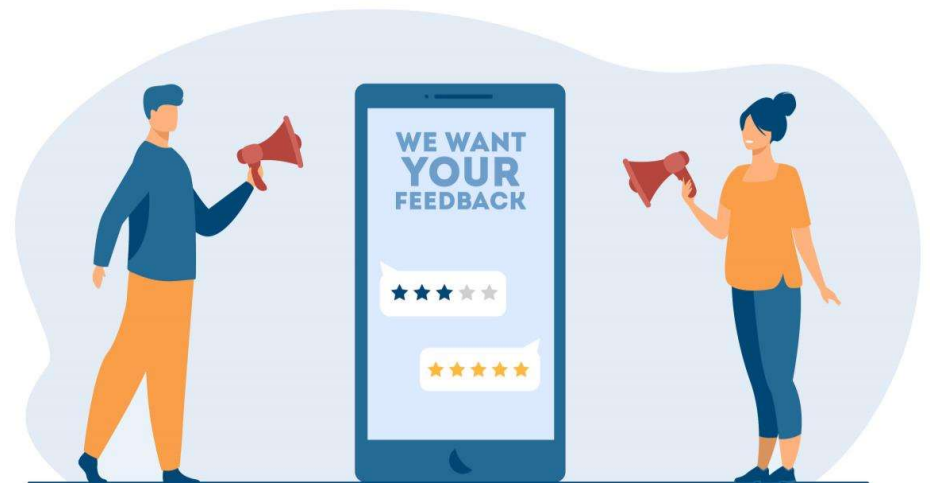


Community Open House 1

Funding:
Taxes, Impact Fees & Grants
Future Participation Opportunities
Project Area:
What's Included, What's Not
Decision-Making Process
Traffic Alleviation

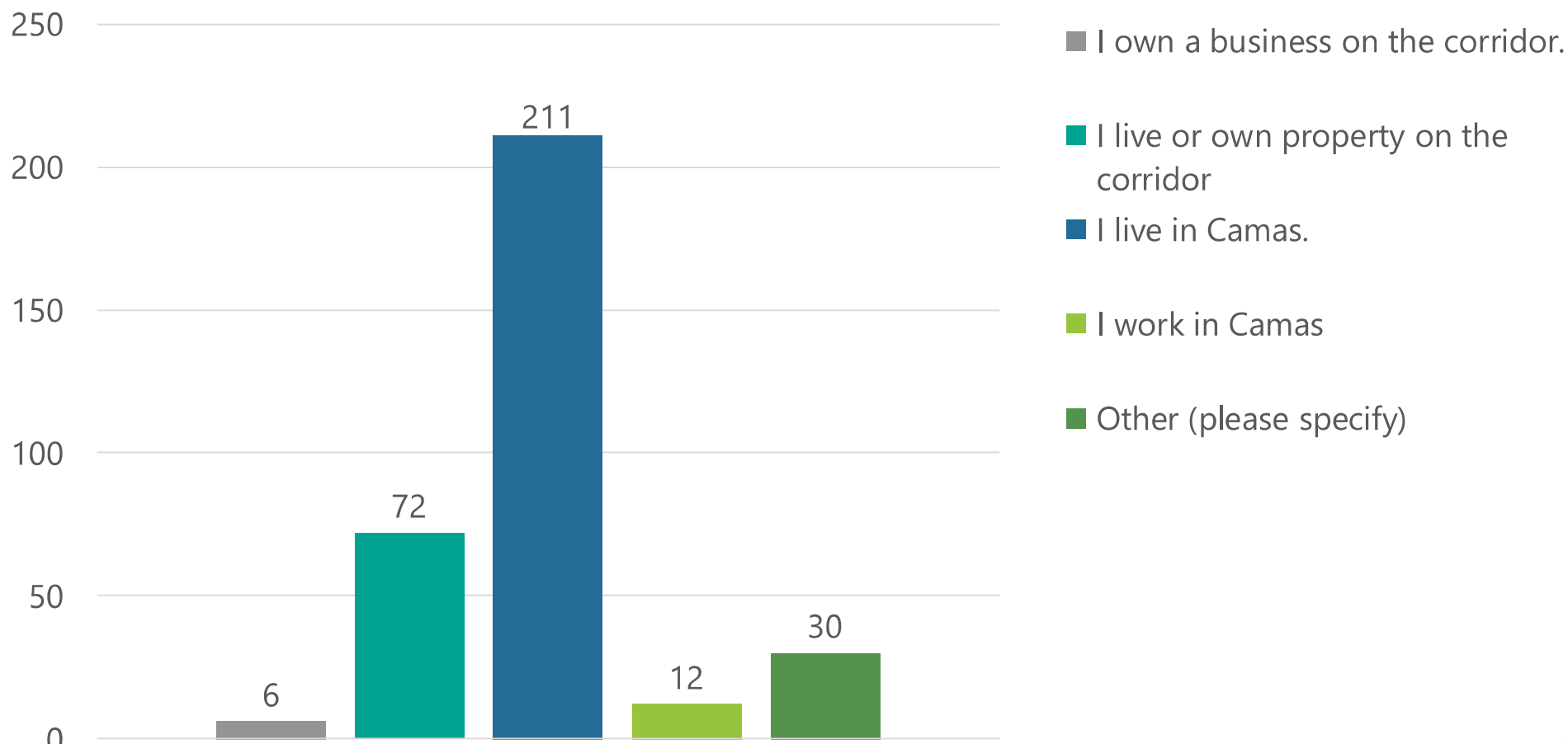
Community Survey 1

- + **What:** Five-question survey about the corridor's form & function
- + **Who:** Available to all Camas residents & the general public
- + **When:** 6 weeks, from Nov. 22, 2022 – Jan. 5, 2023
- + **Where:** EngageCamas.com & paper copies at City Hall & Camas Library
- + **How:** Publicized by social media, Engage Camas, local media, project signage & more

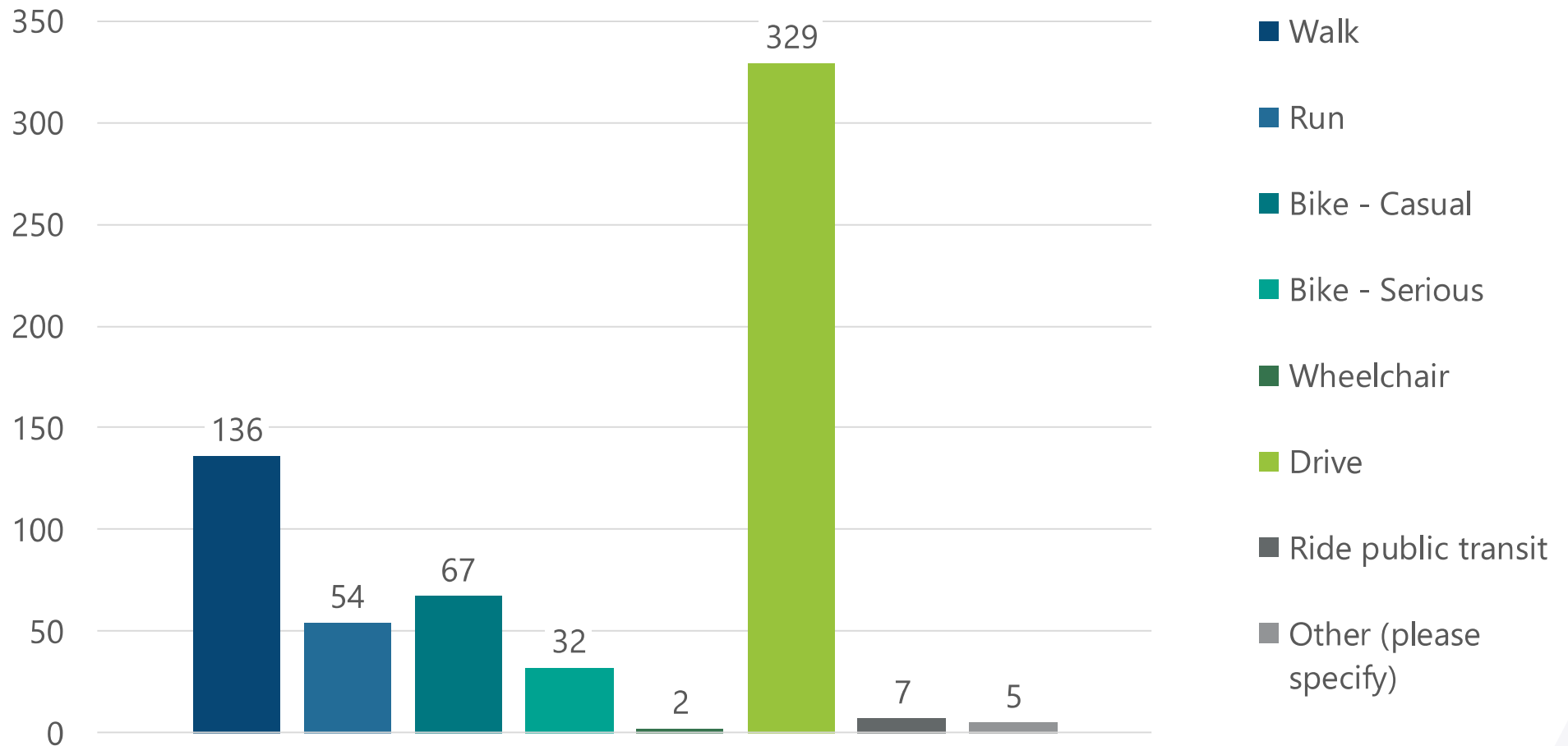


337 Responses

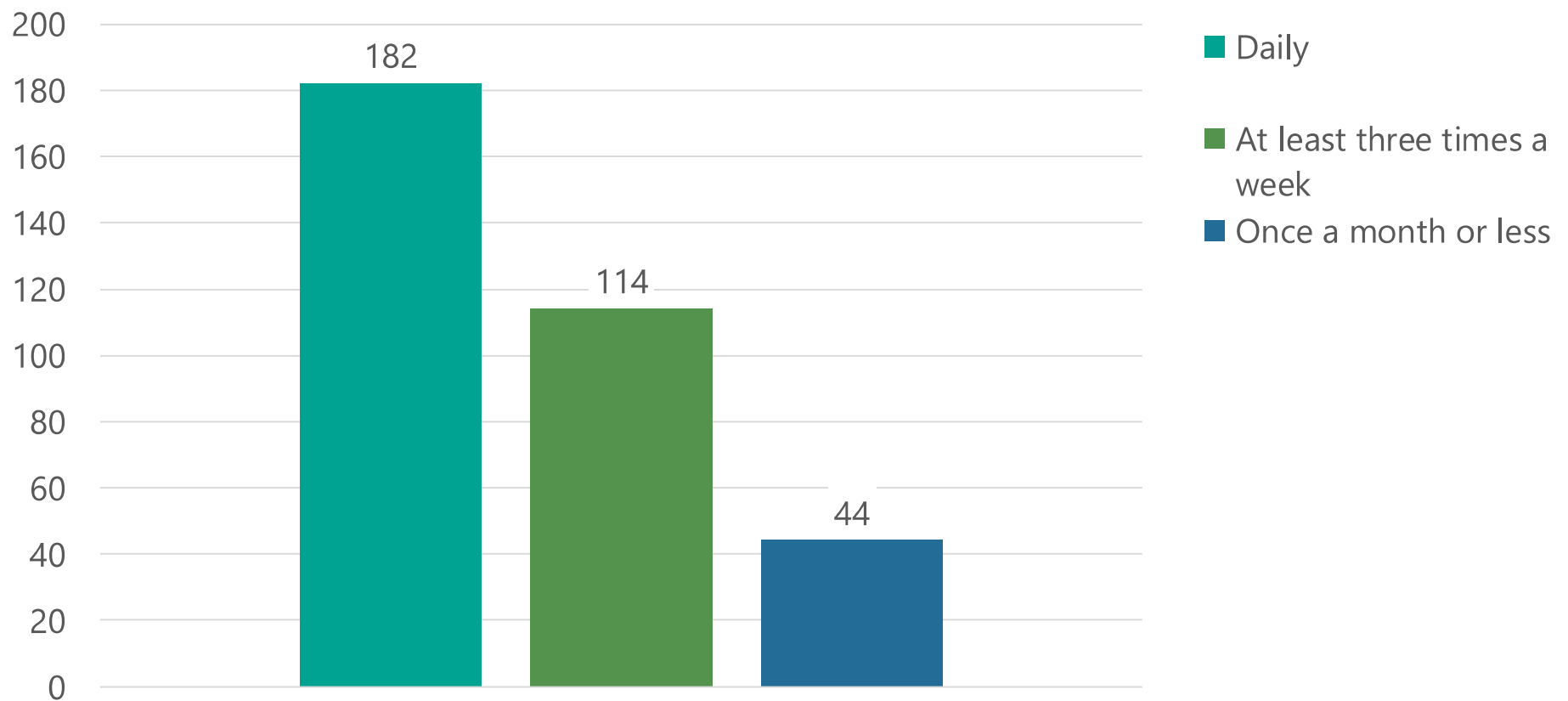
1 .Which best describes your interest in the project?



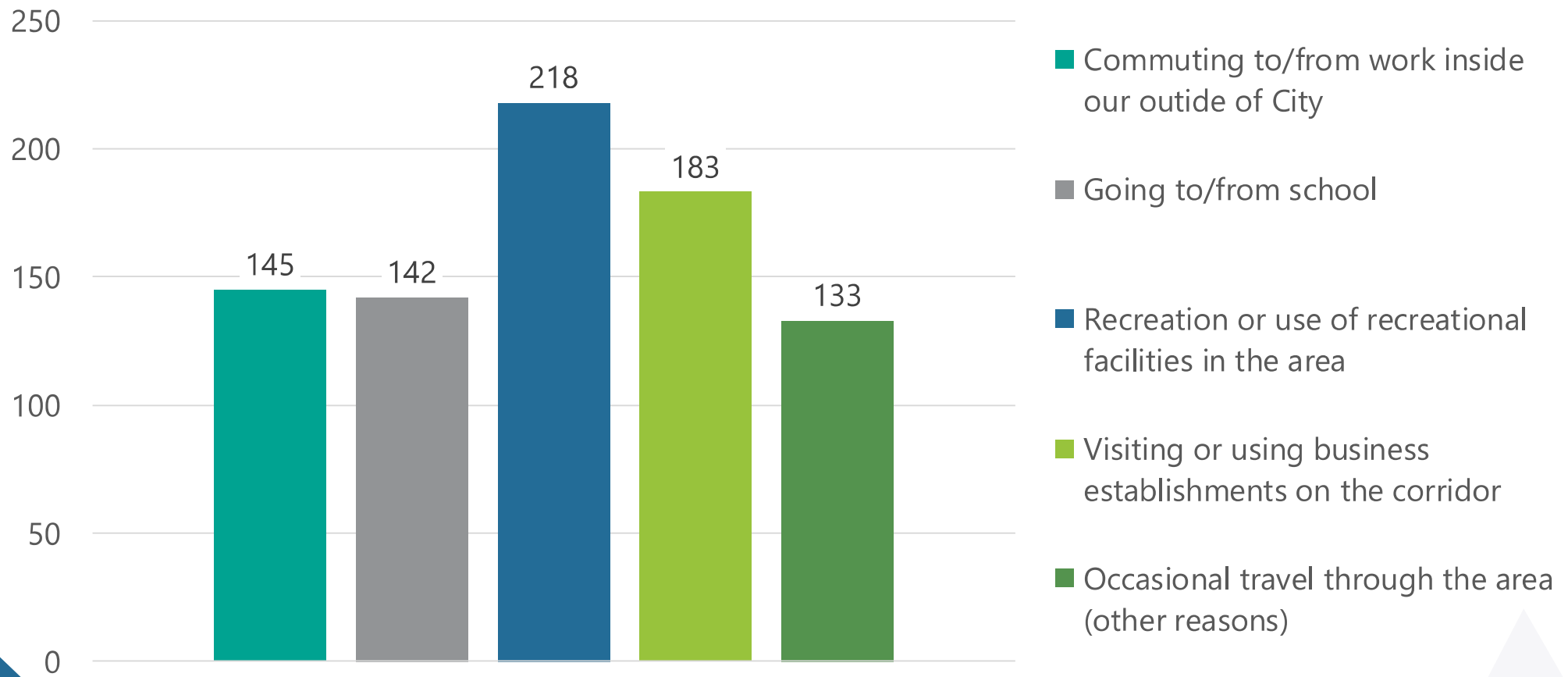
2. What form of travel do you use on the Everett Street Corridor? Select all that apply.



3. How often do you travel the Everett Street Corridor?



4. Why do you typically travel the Everett Street Corridor? Select all that apply.



5. When it comes to the form and function of the corridor, what's important to you? Rank (at least) top 5.

Options	AVG. Rank
Improve safety and mobility for pedestrians	3.62
Improve safety and mobility for drivers	4.02
Improve connections to nearby areas, such as parks, schools, and downtown	4.28
Minimize impact to the environment	6.40
Improve safety and mobility for casual cyclists	6.43
Maintain traffic flow and property access during construction	6.80

5. When it comes to the form and function of the corridor, what's important to you? Rank (at least) top 5.

Options	AVG. Rank
Has a "Camas" look and feel	7.43
Minimize impact to properties on the corridor	7.43
Can be completed for a reasonable cost	7.47
Improve lighting	7.77
Improve parking	7.87
Improve safety and mobility for wheelchair users	8.60
Improve safety and mobility for serious cyclists	8.69
Minimize noise	9.56

Key Outreach Takeaways

- + **Pedestrian and Driver Mobility and Safety** as well as **Connection to Recreation, Businesses, and Schools** were expressed as top priorities.
- + **Environmental Impact** and **Casual Cyclist Mobility and Safety** showed up much more in the online survey than in the live events, as did **Maintaining Traffic Flow and Property Access During Construction**.
- + **Minimizing Property Impact** and **Retaining a “Camas” Look and Feel** are also important to the community.



Additional community priorities expressed will also be considered during the design and planning process.

Tonight's Presentation in Review

01



Welcome
& Introductions

02



Related
Projects

03



Purpose
& Goals

04



Timeline &
Outreach

05



Question
& Answer



Question & Answer