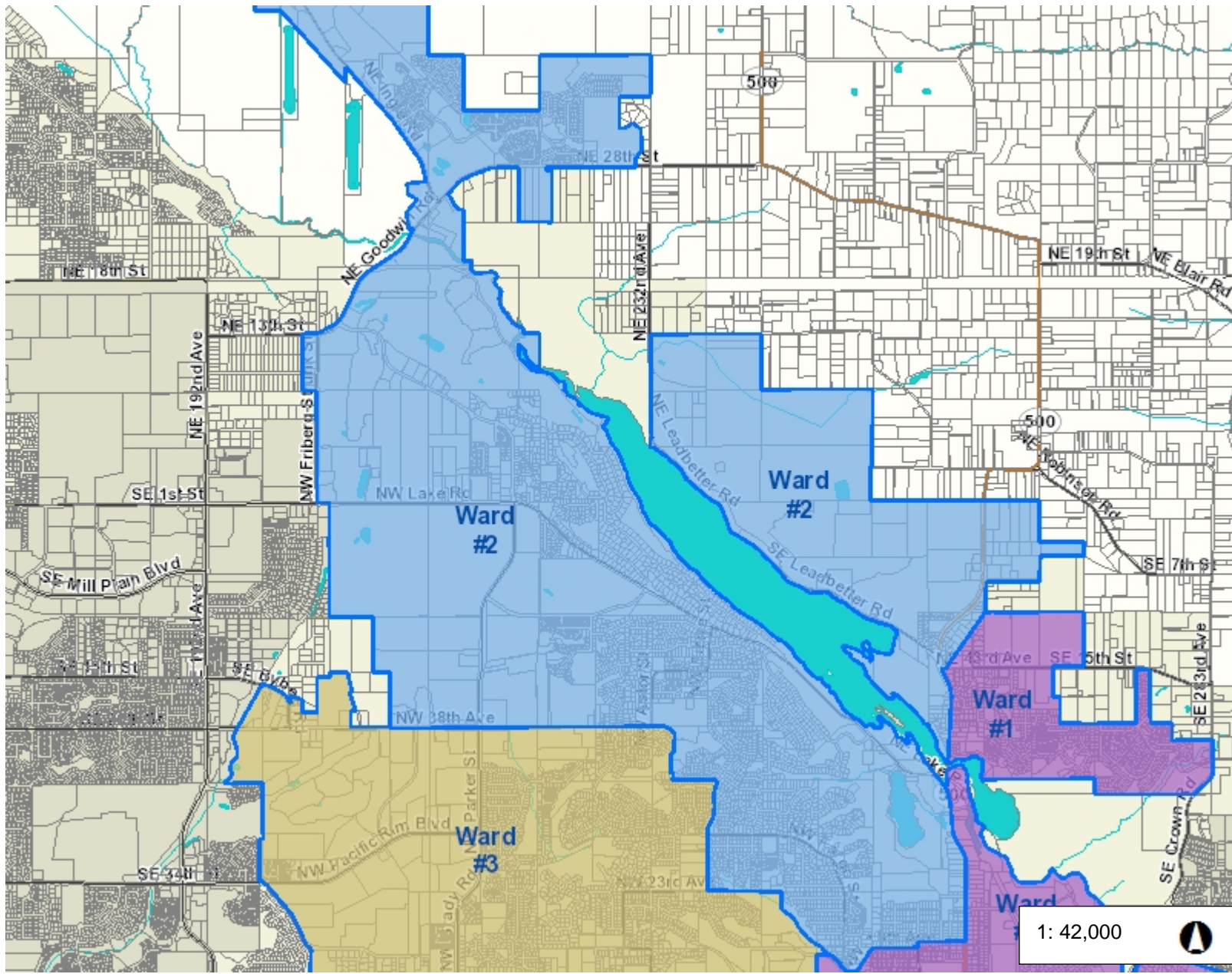




Camas Ward #2



Legend

- Camas Council Ward Boundar
- Camas Council Ward
- Ward #1
- Ward #2
- Ward #3
- Taxlots
- Cities Boundaries
- Urban Growth Boundaries

Voting Ward	Population
1	8,971
2	8,388
3	8,706
Total	26,065

Notes:

- Data source: US Census 2020 PL 94-171 Redistricting Data
- This summary represents an estimate as of April 1, 2020.

7,000.0 0 3,500.0 7,000.0 Feet

WGS_1984_Web_Mercator_Auxiliary_Sphere
Clark County, WA. GIS - <http://gis.clark.wa.gov>

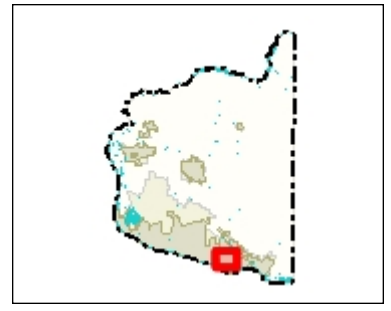
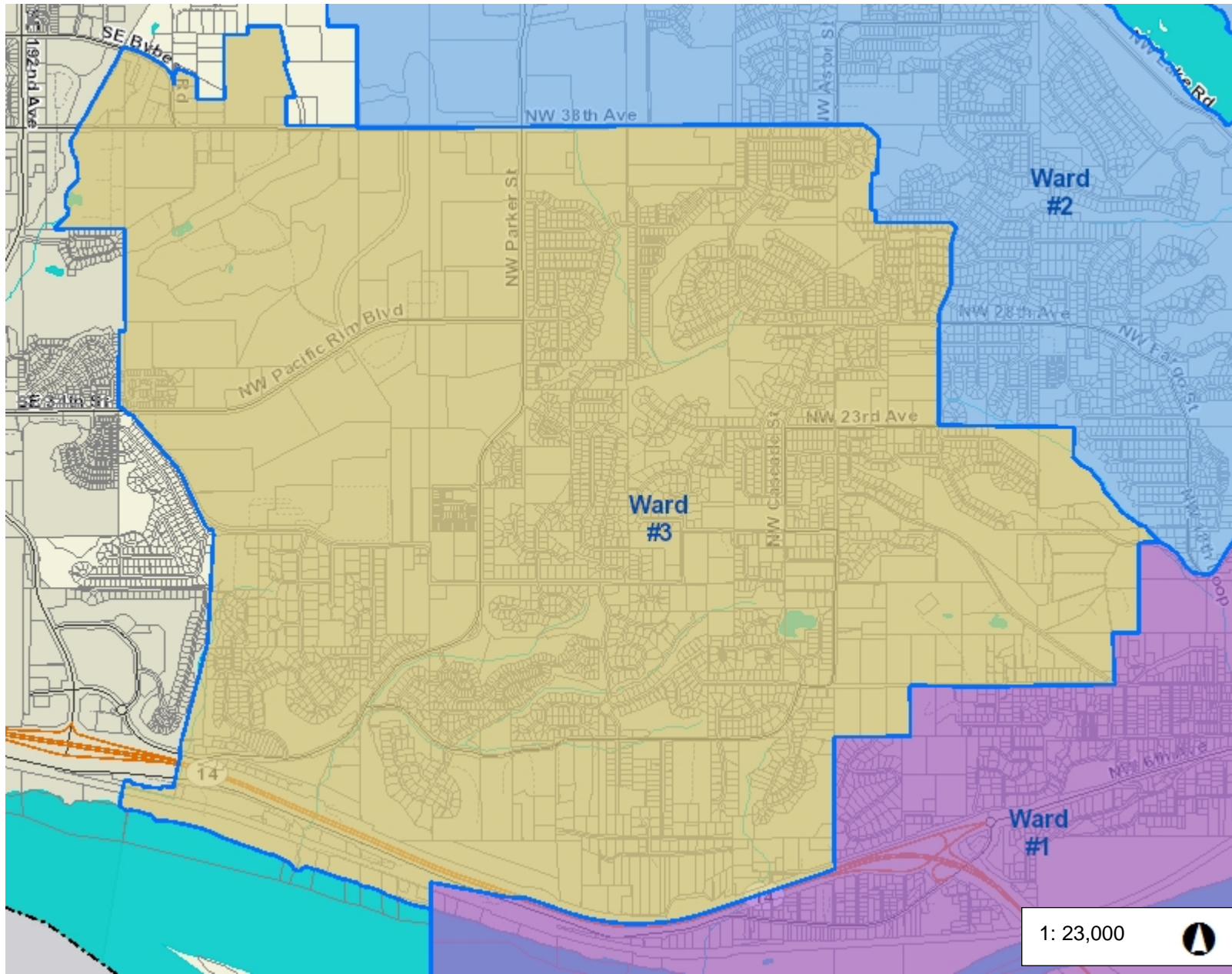
This map was generated by Clark County's "MapsOnline" website. Clark County does not warrant the accuracy, reliability or timeliness of any information on this map, and shall not be held liable for losses caused by using this information.

1: 42,000





Camas Ward #3



Legend

- Camas Council Ward Boundar
- Camas Council Ward
 - Ward #1
 - Ward #2
 - Ward #3
- Taxlots
- Cities Boundaries
- Urban Growth Boundaries

Voting Ward	Population
1	8,971
2	8,388
3	8,706
<hr/>	
Total	26,065

Notes:

- Data source: US Census 2020 PL 94-171 Redistricting Data
- This summary represents an estimate as of April 1, 2020.

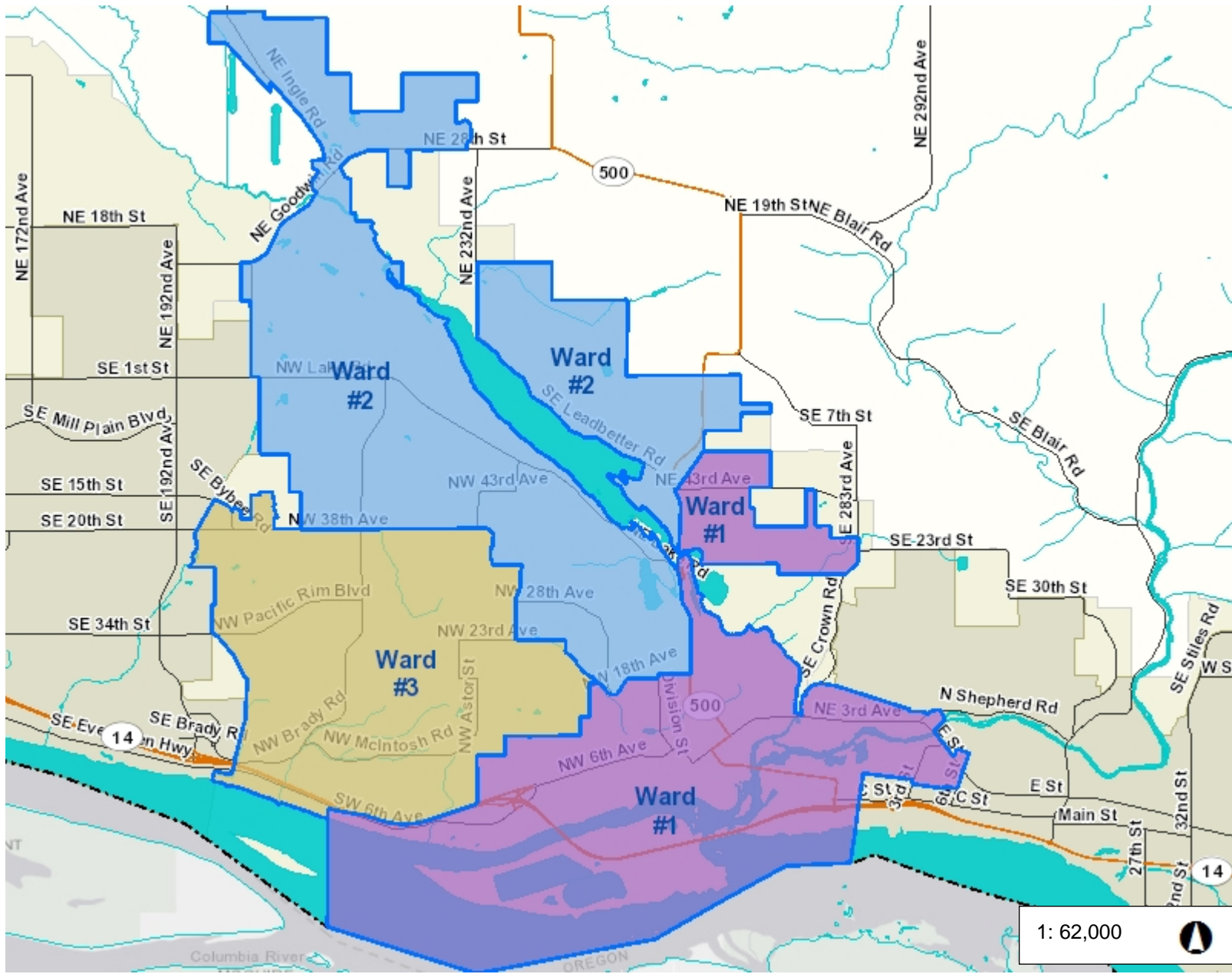


WGS_1984_Web_Mercator_Auxiliary_Sphere
Clark County, WA. GIS - <http://gis.clark.wa.gov>

This map was generated by Clark County's "MapsOnline" website. Clark County does not warrant the accuracy, reliability or timeliness of any information on this map, and shall not be held liable for losses caused by using this information.



Camas Wards



Legend

- Camas Council Ward Boundar
- Camas Council Ward
 - Ward #1
 - Ward #2
 - Ward #3
- Cities Boundaries
- Urban Growth Boundaries

Voting Ward	Population
1	8,971
2	8,388
3	8,706
Total	26,065

Notes:

- Data source: US Census 2020 PL 94-171 Redistricting Data
- This summary represents an estimate as of April 1, 2020.

10,333.3 0 5,166.67 10,333.3 Feet

WGS_1984_Web_Mercator_Auxiliary_Sphere
Clark County, WA. GIS - <http://gis.clark.wa.gov>

This map was generated by Clark County's "MapsOnline" website. Clark County does not warrant the accuracy, reliability or timeliness of any information on this map, and shall not be held liable for losses caused by using this information.

2020 Population of Current City of Camas Wards

February 23, 2022

Clark County GIS

Ward	Population (2020)	Percent of Total Population	Target Population *	Deviation from Target	Deviation Percent
1	8,971	34%	8,688.33	282.67	3.25%
2	8,388	32%	8,688.33	(300.33)	-3.46%
3	8,706	33%	8,688.33	17.67	0.20%
Total	26,065	100%	26,065		

* Target population for 2020 redistricting

Population Summary of the City of Camas by Council Ward

2020 U.S. Census

Geographic Area	Ward 1		Ward 2		Ward 3		City Total	
	Count	Percent of Ward	Count	Percent of Ward	Count	Percent of Ward	Count	Percent of City
Total Population	8,971		8,388		8,706		26,065	100%
Race: White (alone)	7,315	81.5%	6,450	76.9%	6,131	70.4%	19,896	76.33%
Race: Black or African American (alone)	82	0.9%	86	1.0%	105	1.2%	273	1.05%
Race: American Indian or Alaska Native (alone)	50	0.6%	39	0.5%	28	0.3%	117	0.45%
Race: Asian (alone)	393	4.4%	805	9.6%	1,376	15.8%	2,574	9.88%
Race: Native Hawaiian or Other Pacific Islander (alone)	40	0.4%	15	0.2%	9	0.1%	64	0.25%
Other Race	211	2.4%	147	1.8%	148	1.7%	506	1.94%
Race: Two Or More Races	880	9.8%	846	10.1%	909	10.4%	2,635	10.11%
Ethnic Hispanic	711	7.9%	621	7.4%	548	6.3%	1,880	7.21%
Ethnic Hispanic White	253		203		133		589	
Total Households	3,304		2,783		2,747		8,834	
Vacant Housing Units	199		106		95		400	
Total Housing Units	3,503		2,889		2,842		9,234	

Notes

- 1) Data source: US Census 2020 PL 94-171 Redistricting Data.
- 2) This summary represents an estimate as of April 1, 2020.
- 3) An individual's response to the census race question is based upon self-identification.
- 4) For race classification, "alone" means not of "two or more races".
- 5) People who identify with more than one race may choose to provide multiple races in response to the race question. For example, a respondent may identify as both Asian and White. These are counted in the "Two or More Races" category.
- 6) Hispanic is an ethnic group, not a racial group. So a person may choose both Hispanic and White. The Hispanic numbers should not be mathematically combined with race numbers.
- 7) US Census definitions of race: <https://www.census.gov/topics/population/race/about.html>