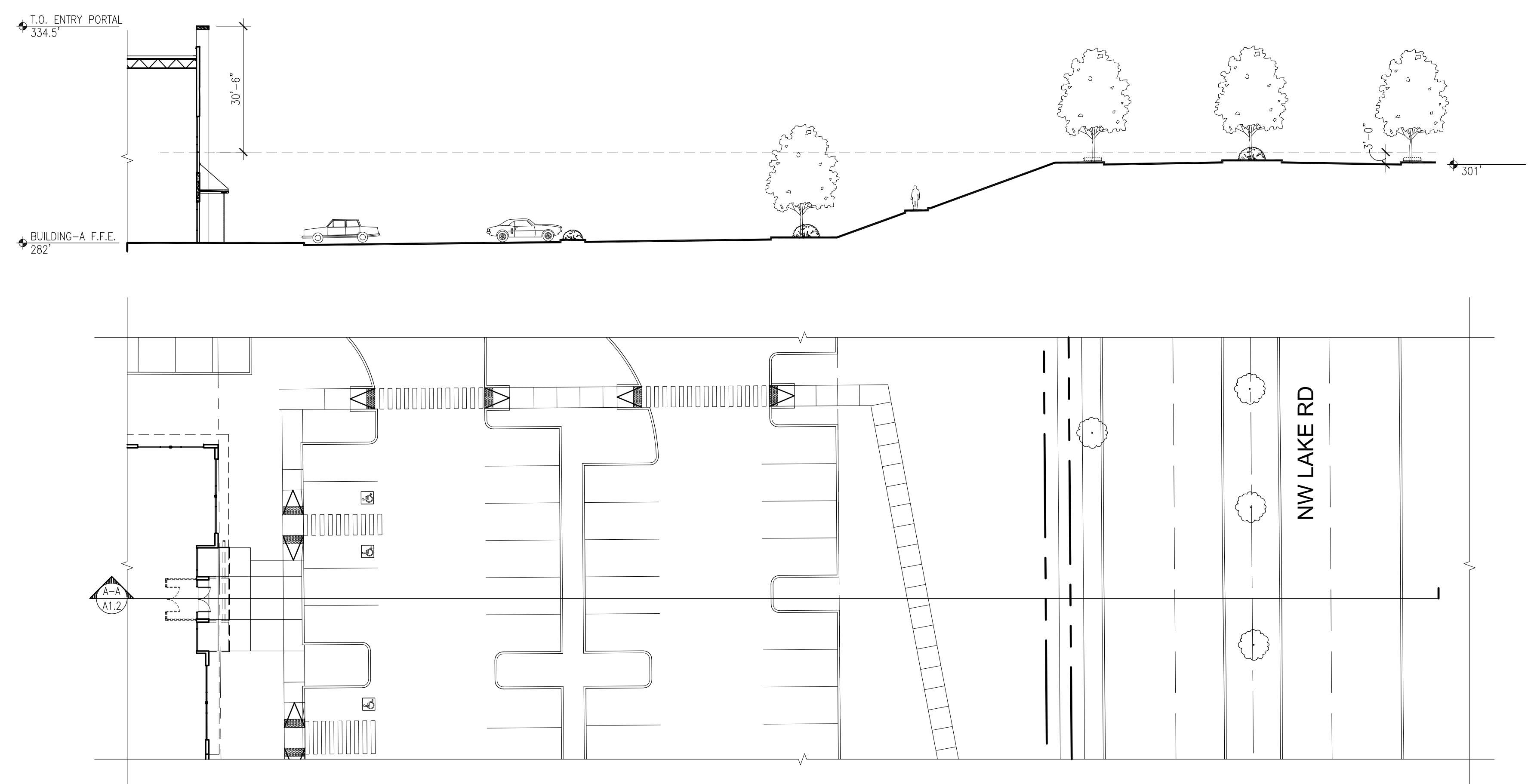
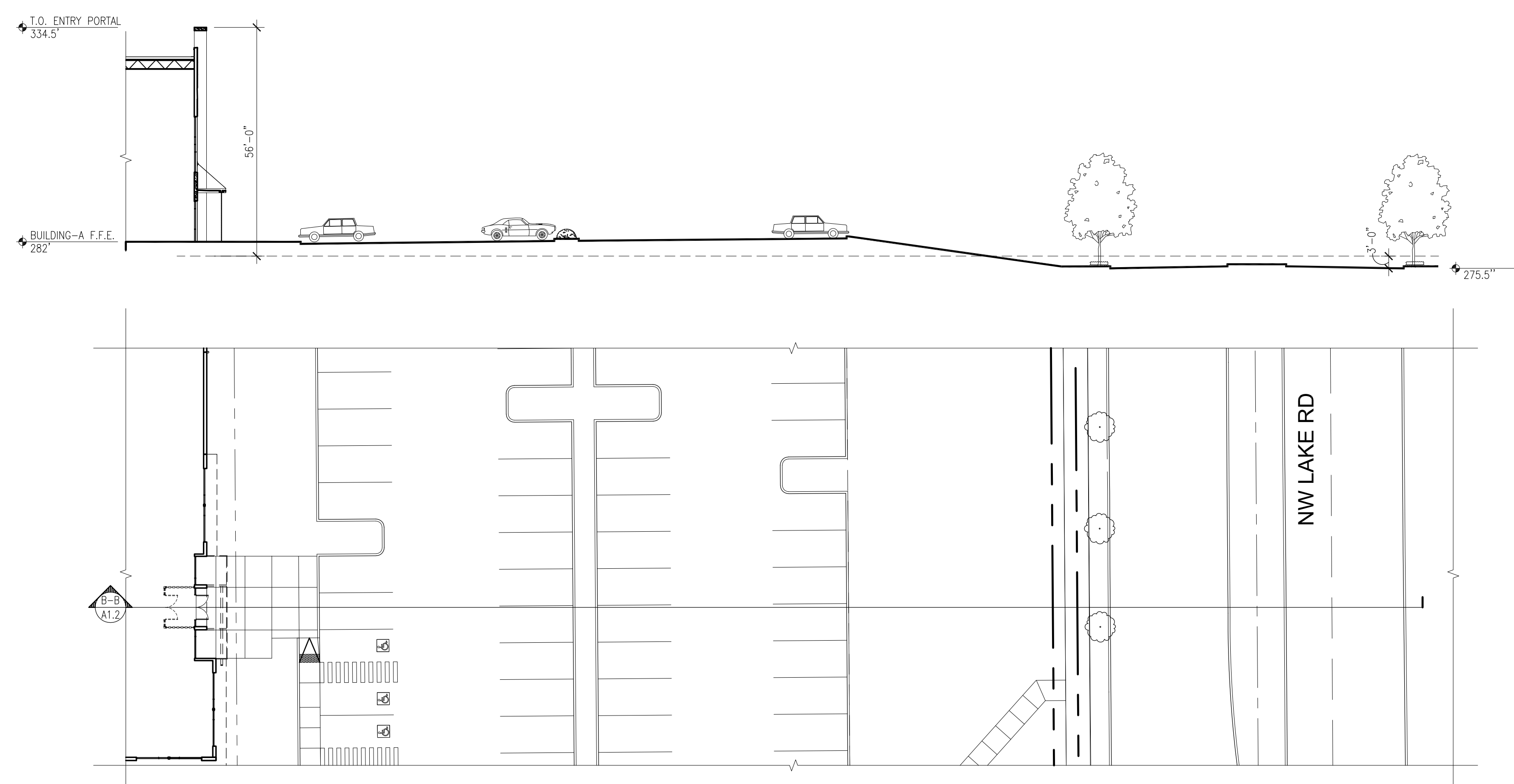


12503 NE Bel-Red Road, Suite 100
Bellevue, WA 98005
p 425 646 1818 f 425 646 4141

PANATTONI
DEVELOPMENT, LLC
1821 DOCK ST, SUITE 100
TACOMA, WA 98402



1 SE SITE SECTION A-A
SCALE: 1" = 20'



2 SW SITE SECTION B-B
SCALE: 1" = 20'

REVISIONS

ISSUE NO.	DATE	ITEM
3	04 07 2022	DESIGN REVIEW
2	02 02 2022	SEPA RESUBMITTAL
1	10 01 2021	SEPA SUBMITTAL

PROFESSIONAL STAMP

Digitally signed
by Randy
Brown
Date:
2022.04.08
13:10:35 -07'00'

PROJECT INFORMATION

CAMAS BUSINESS CENTER
4707 NW Lake Rd
Camas, WA

SHEET INFORMATION

RELEASE FOR: PROGRESS PRINTING
TITLE: SITE SECTIONS
DESIGNED BY: DRAWN BY:
REVIEWED BY: APPROVED BY:
DATE: 09-16-2021
PROJECT NO: 200902.24.139
SHEET NO: A1.2

P:\30902 - CAMAS BUSINESS CENTER\30902-24-139\30902-24-139.dwg