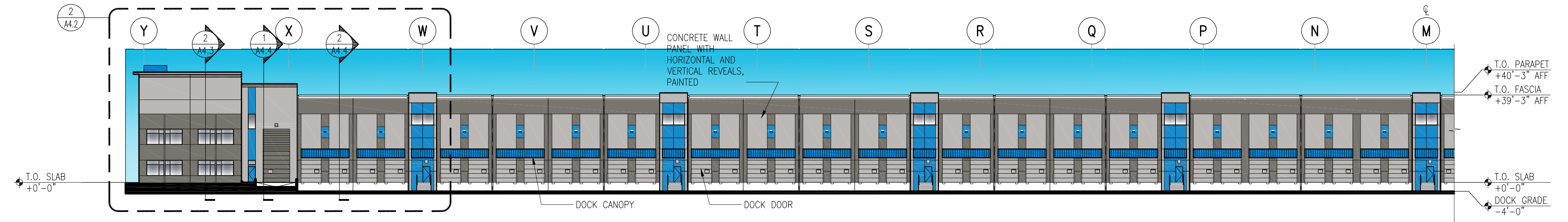
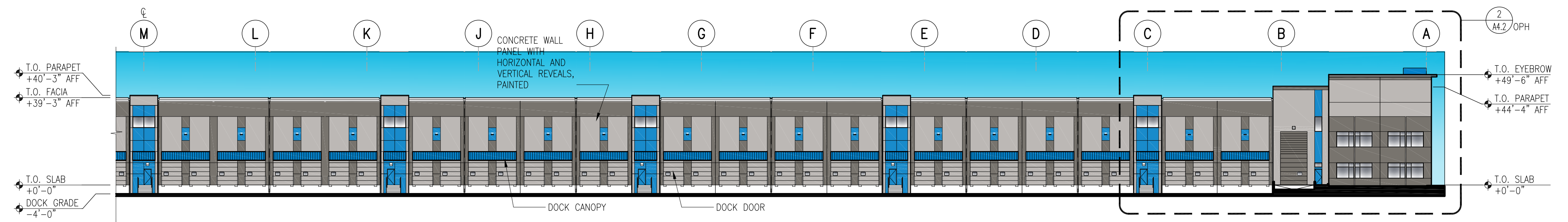


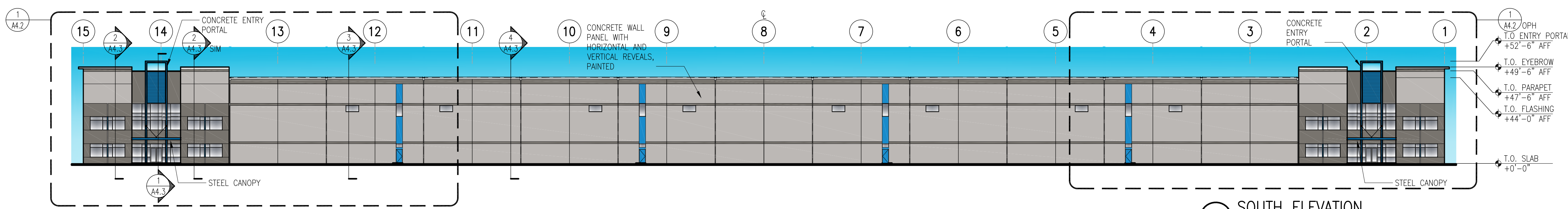
1 NORTH ELEVATION
 SCALE: 1/32" = 1'-0"



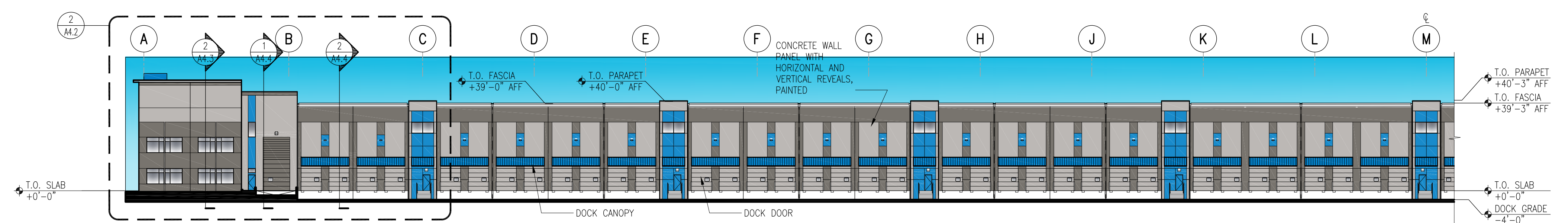
2 EAST ELEVATION
 SCALE: 1/32" = 1'-0"



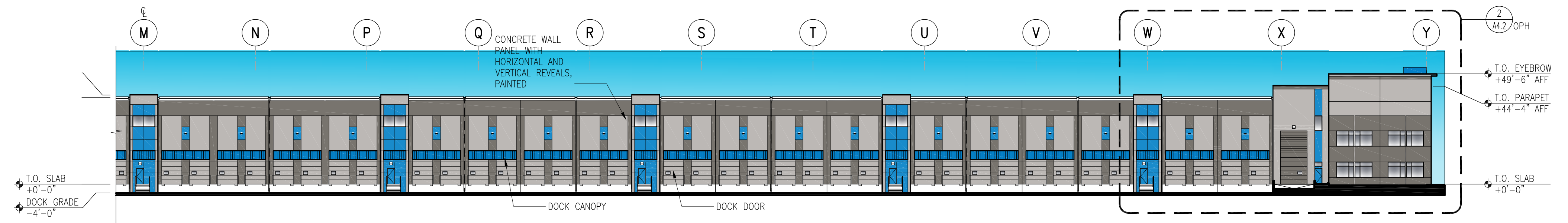
3 EAST ELEVATION
 SCALE: 1/32" = 1'-0"



4 SOUTH ELEVATION
 SCALE: 1/32" = 1'-0"



5 WEST ELEVATION
 SCALE: 1/32" = 1'-0"



6 WEST ELEVATION
 SCALE: 1/32" = 1'-0"

REVISIONS

ISSUE NO.	DATE	ITEM
3	04 08 2022	DESIGN REVIEW
2	02 02 2022	SEPA RESUBMITTAL
1	10 01 2021	SEPA SUBMITTAL

PROFESSIONAL STAMP

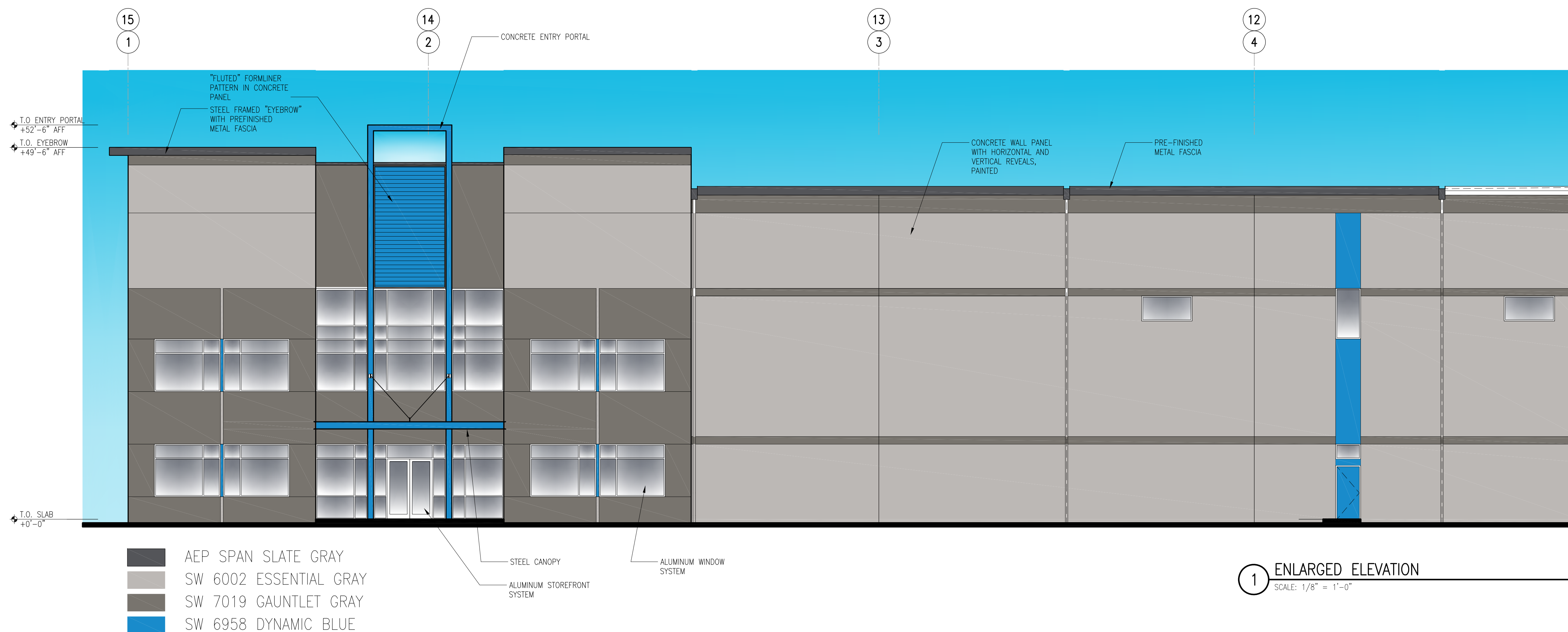
Digitally signed
 by Randy
 Brown
 Date:
 2022.04.08
 13:10:35 -07'00'

PROJECT INFORMATION

**CAMAS BUSINESS
 CENTER-BUILDING A**
 4707 NW Lake Rd
 Camas, WA

SHEET INFORMATION

RELEASE FOR: PROGRESS PRINTING
 TITLE: ELEVATIONS
 DESIGNED BY: DRAWN BY:
 REVIEWED BY: APPROVED BY:
 DATE: 09-16-2021
 SHEET NO: A4.1
 PROJECT NO: 200902.24.139



- AEP SPAN SLATE GRAY
- SW 6002 ESSENTIAL GRAY
- SW 7019 GAUNTLET GRAY
- SW 6958 DYNAMIC BLUE

1 ENLARGED ELEVATION
SCALE: 1/8" = 1'-0"

REVISIONS

ISSUE NO.	DATE	ITEM
3	04 08 2022	DESIGN REVIEW
2	02 02 2022	SEPA RESUBMITTAL
1	10 01 2021	SEPA SUBMITTAL

PROFESSIONAL STAMP

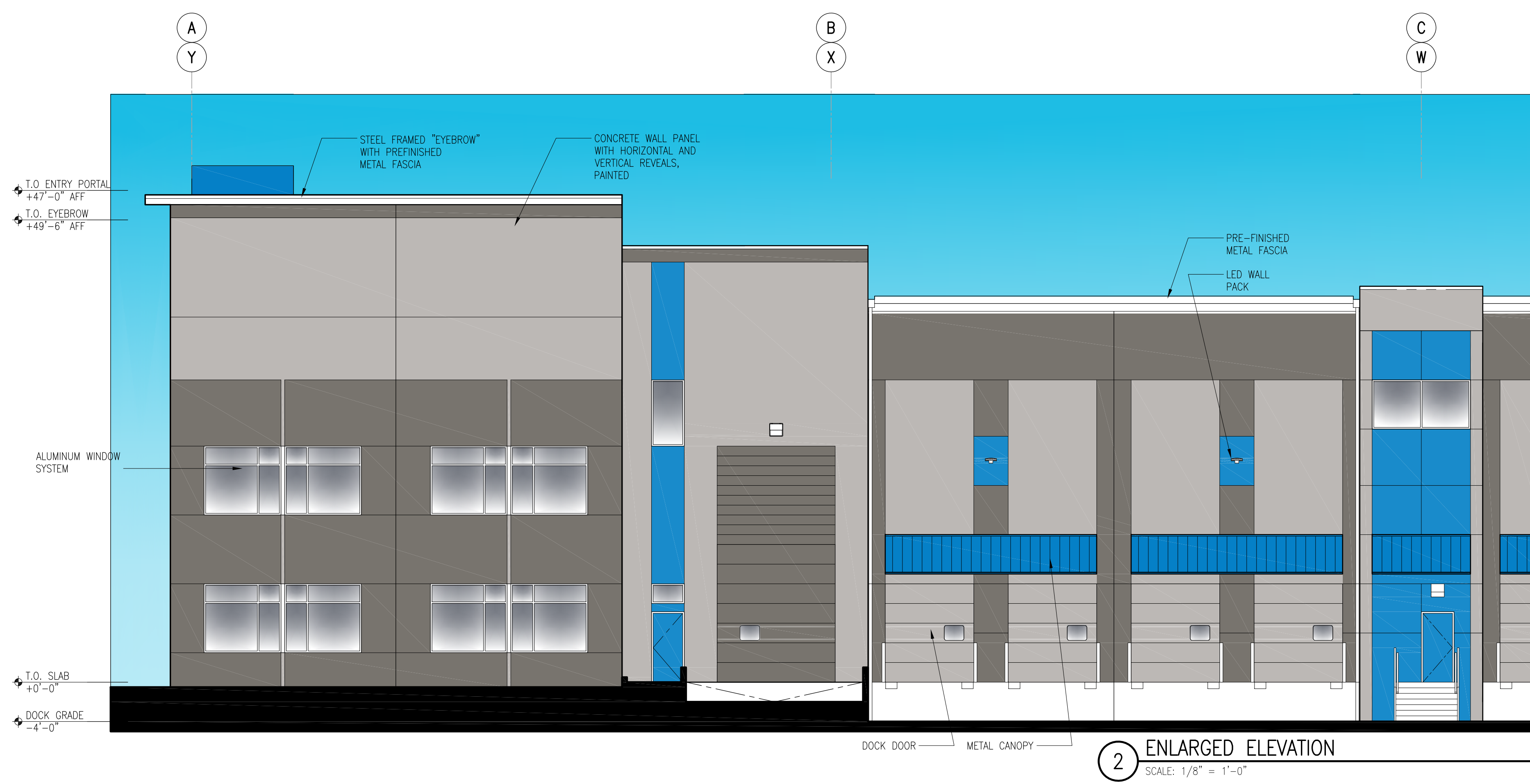
Digitally signed
by Randy
Brown
Date:
2022.04.08
13:10:35 -07'00'

PROJECT INFORMATION

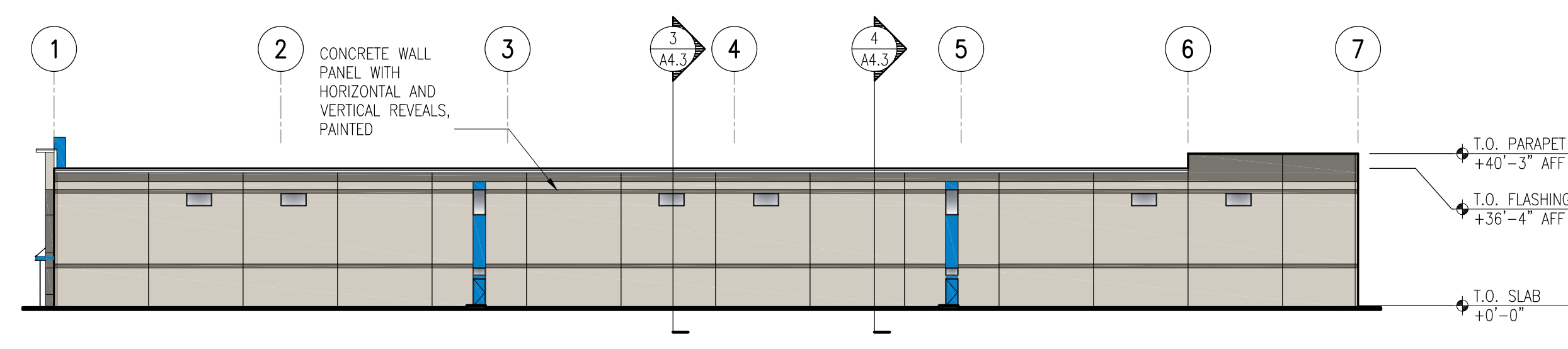
**CAMAS BUSINESS
CENTER-BUILDING A**
4707 NW Lake Rd
Camas, WA

SHEET INFORMATION

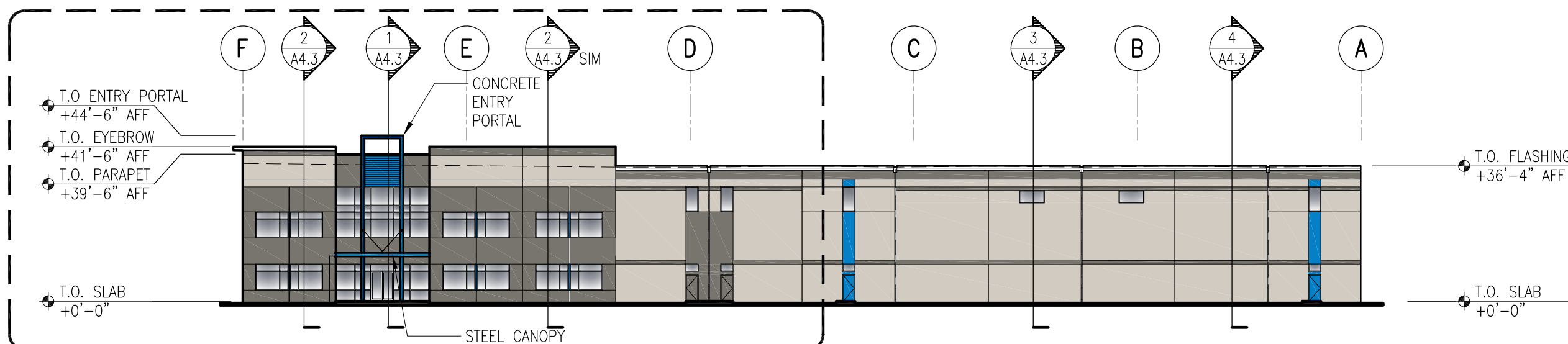
RELEASE FOR: PROGRESS PRINTING
TITLE: ENLARGED ELEVATIONS
DESIGNED BY: DRAWN BY:
REVIEWED BY: APPROVED BY:
DATE: 09-16-2021
PROJECT NO: 200902.24.139
SHEET NO: A4.2



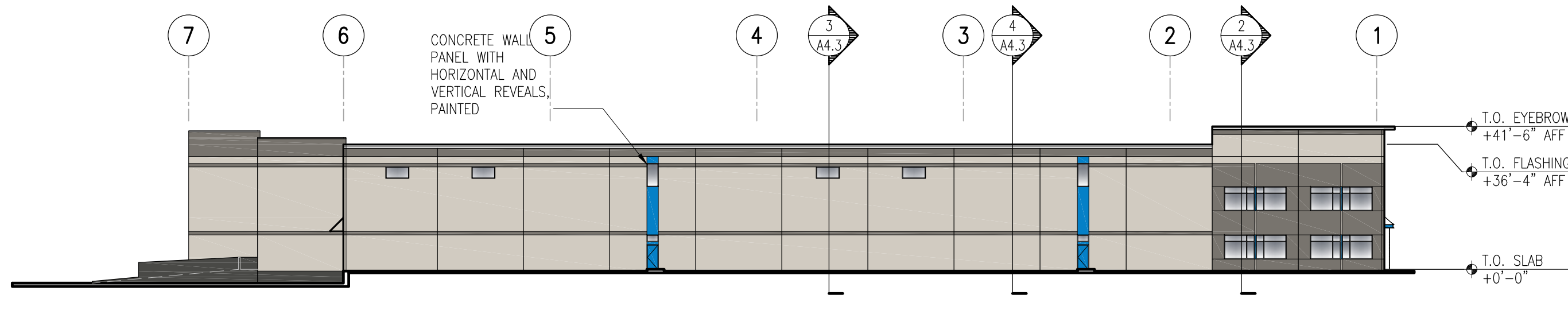
2 ENLARGED ELEVATION
SCALE: 1/8" = 1'-0"



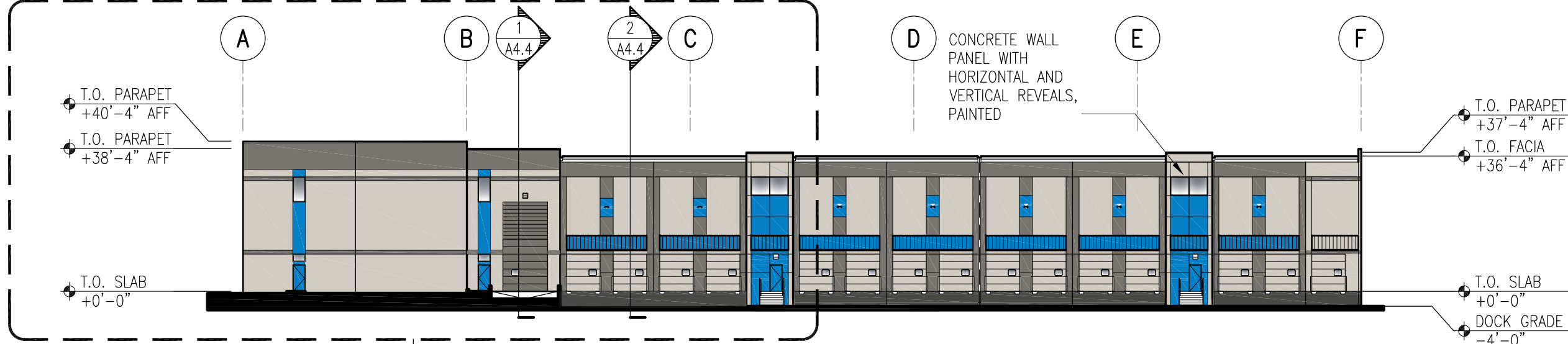
1 NORTH ELEVATION
 SCALE: 1/32" = 1'-0"



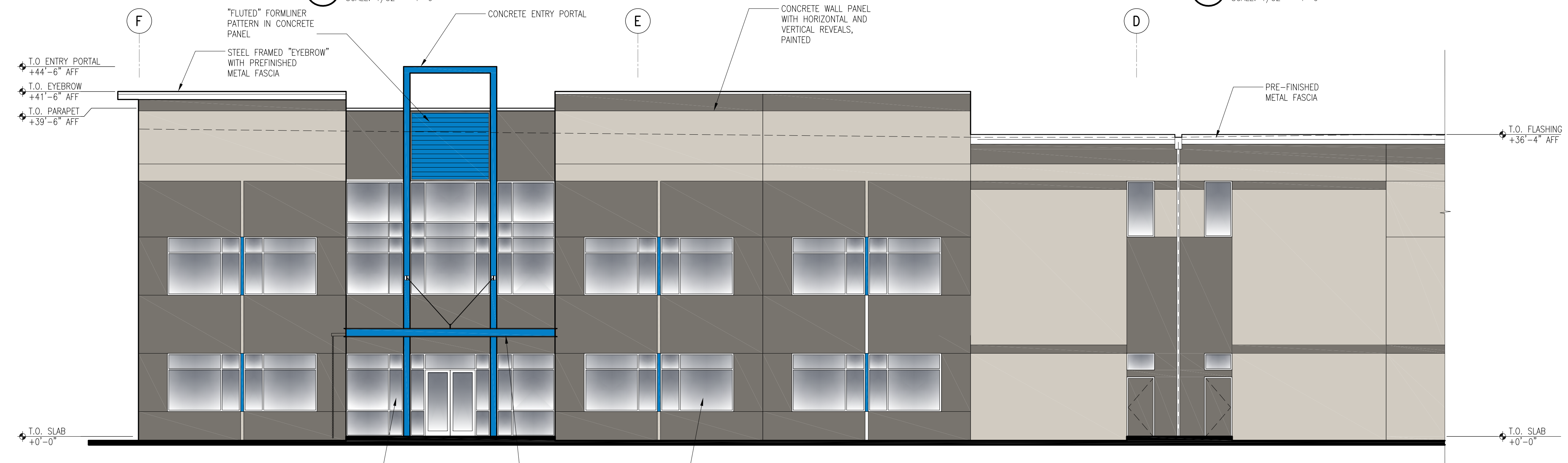
2 EAST ELEVATION
 SCALE: 1/32" = 1'-0"



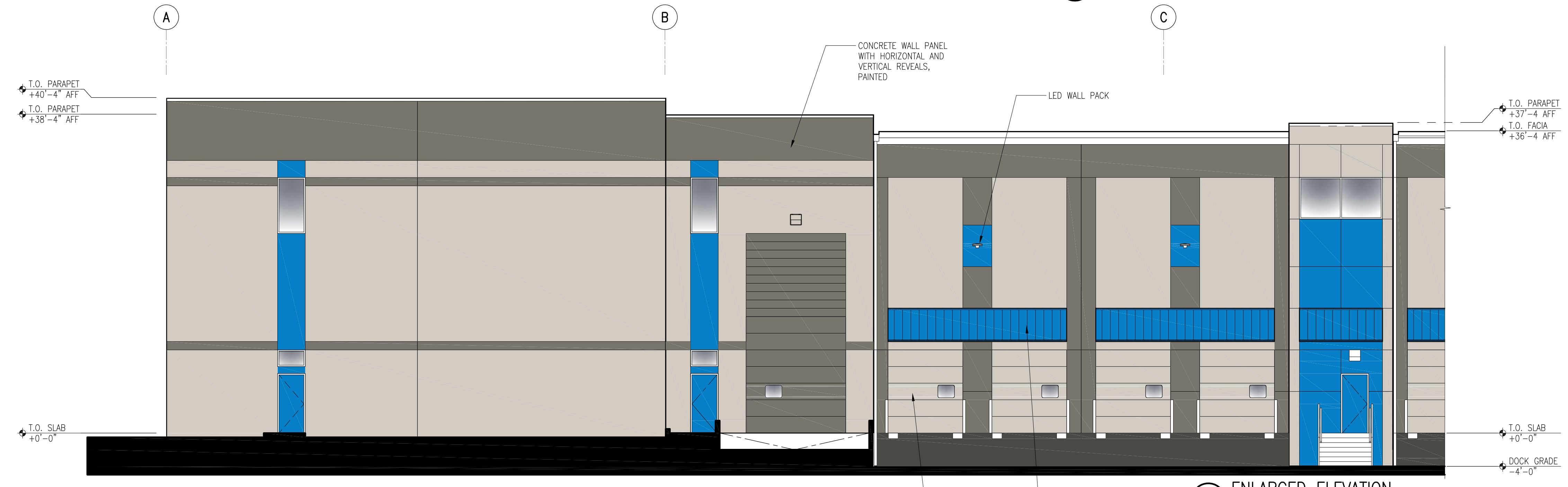
3 SOUTH ELEVATION
 SCALE: 1/32" = 1'-0"



4 WEST ELEVATION
 SCALE: 1/32" = 1'-0"



5 ENLARGED ELEVATION
 SCALE: 1/8" = 1'-0"



6 ENLARGED ELEVATION
 SCALE: 1/8" = 1'-0"

REVISIONS

ISSUE NO.	DATE	ITEM
3	04 08 22	DESIGN REVIEW
2	02 02 22	SEPA RESUBMITTAL
1	10 01 21	SEPA

PROFESSIONAL STAMP

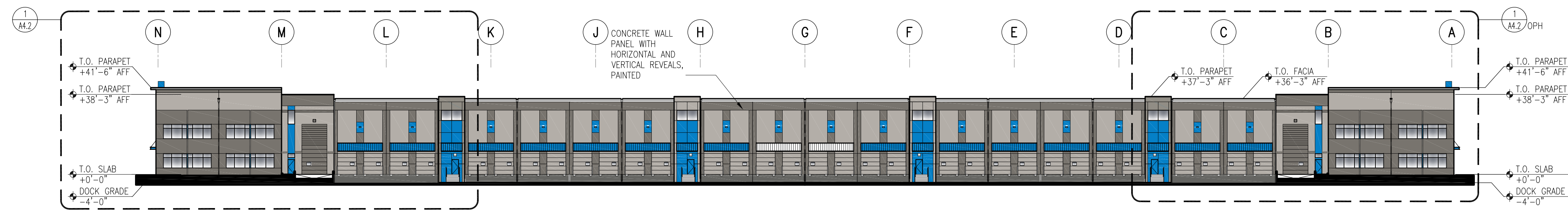
Digitally signed by Randy Brown
 Date: 2022.04.08 13:10:35 -07'00'

PROJECT INFORMATION

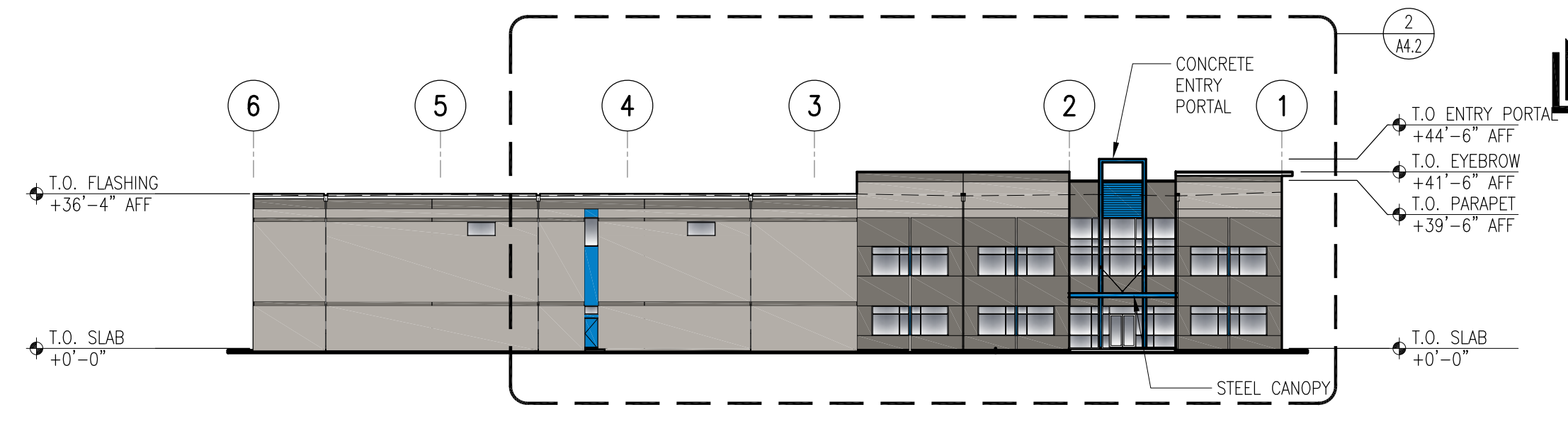
CAMAS BUSINESS CENTER-BUILDING B
 4707 NW Lake Rd
 Camas, WA 98607

SHEET INFORMATION

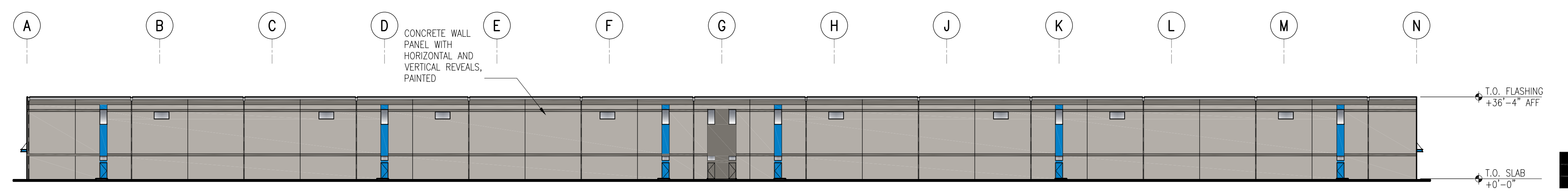
RELEASE FOR: PROGRESS PRINTING
 TITLE: ELEVATIONS & ENLARGED ELEVATIONS
 DESIGNED BY: DRAWN BY:
 REVIEWED BY: APPROVED BY:
 DATE: 09-16-2021
 PROJECT NO: 200902.24.139
 SHEET NO: A4.1



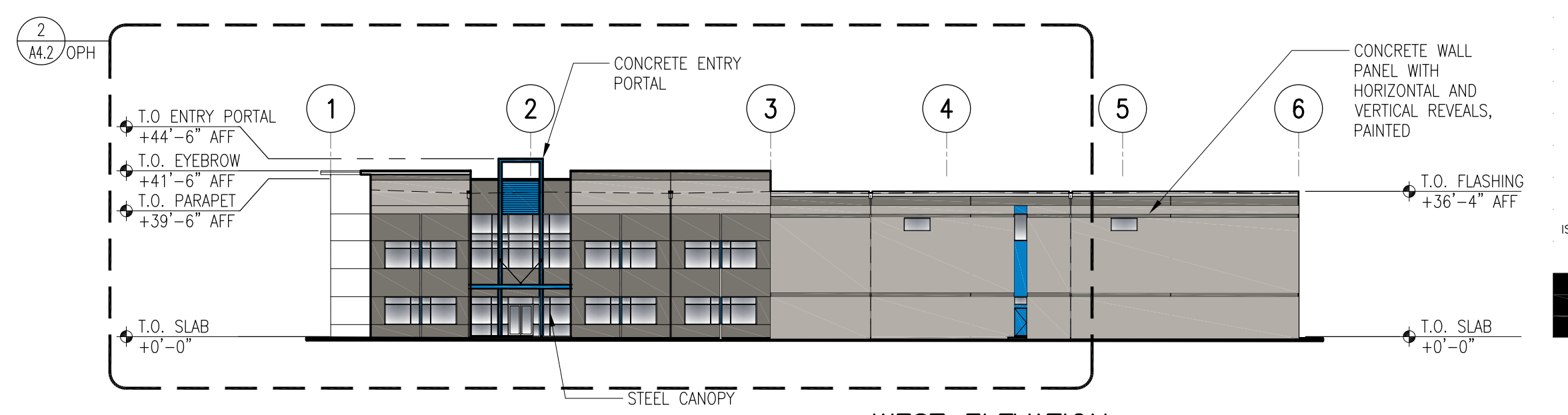
1 NORTH ELEVATION
SCALE: 1/32" = 1'-0"



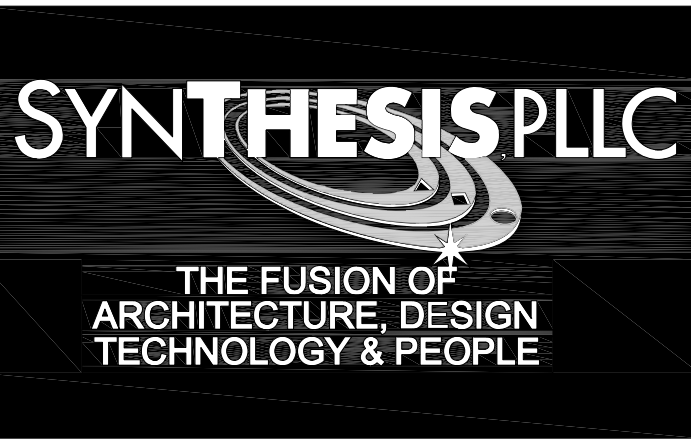
2 EAST ELEVATION
SCALE: 1/32" = 1'-0"



3 SOUTH ELEVATION
SCALE: 1/32" = 1'-0"



4 WEST ELEVATION
SCALE: 1/32" = 1'-0"



12503 NE Bel-Red Road, Suite 100
Bellevue, WA 98005
p 425 646 1818 f 425 646 4141



REVISIONS

ISSUE NO.	DATE	ITEM
3	04 08 2022	DESIGN REVIEW
2	02 02 2022	SEPA RESUBMITTAL
1	10 01 2021	SEPA

PROFESSIONAL STAMP

Digitally signed by Randy Brown
Date: 2022.04.08 13:10:35 -07'00'

PROJECT INFORMATION

EAST VANCOUVER E-COMMERCE CENTER-BUILDING C
4707 NW Lake Rd
Camas, WA 98607

SHEET INFORMATION

RELEASE FOR: PROGRESS PRINTING
TITLE: ELEVATIONS
DESIGNED BY: DRAWN BY:
REVIEWED BY: APPROVED BY:
DATE: 09-16-2021
PROJECT NO: 200902.24.139
SHEET NO: A4.1

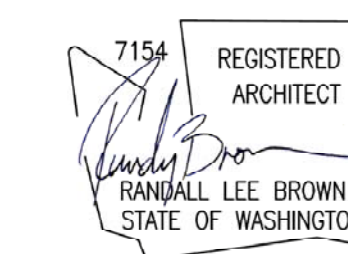


1 ENLARGED ELEVATION
SCALE: 1/8" = 1'-0"

REVISIONS

ISSUE NO.	DATE	ITEM
3	04 08 2022	DESIGN REVIEW
2	02 02 2022	SEPA RESUBMITTAL
1	10 01 2021	SEPA

PROFESSIONAL STAMP



Digitally signed
by Randy
Brown
Date:
2022.04.08
13:10:35 -07'00'

PROJECT INFORMATION

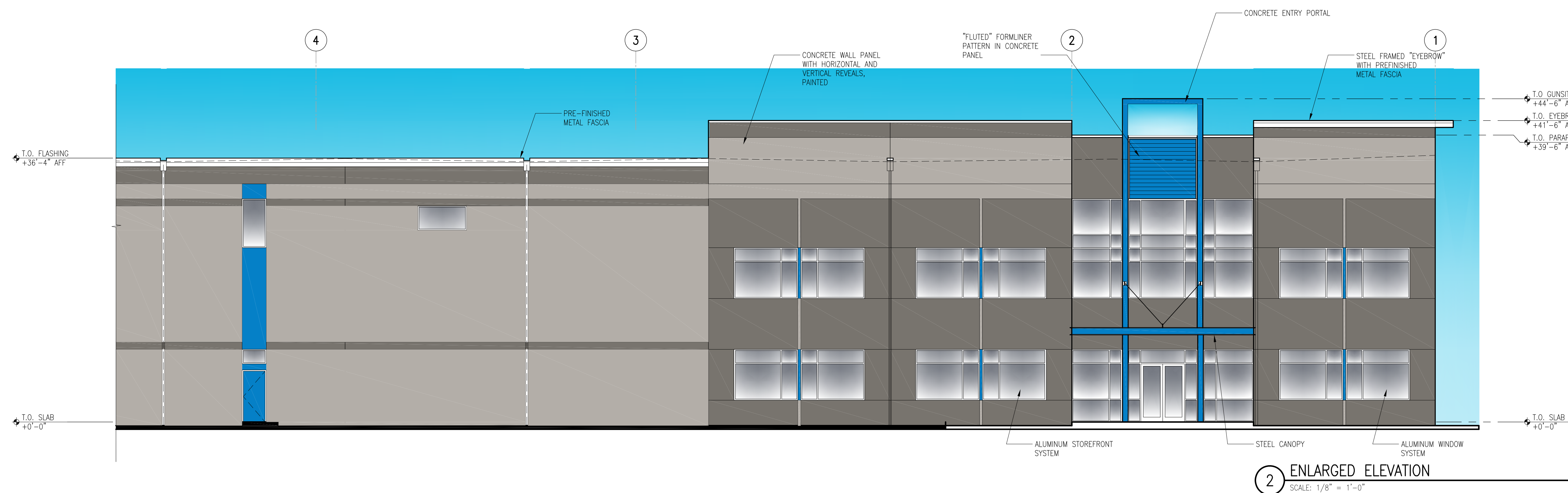
**EAST VANCOUVER E-COMMERCE
CENTER-BUILDING C**
4707 NW Lake Rd
Camas, WA 98607

SHEET INFORMATION

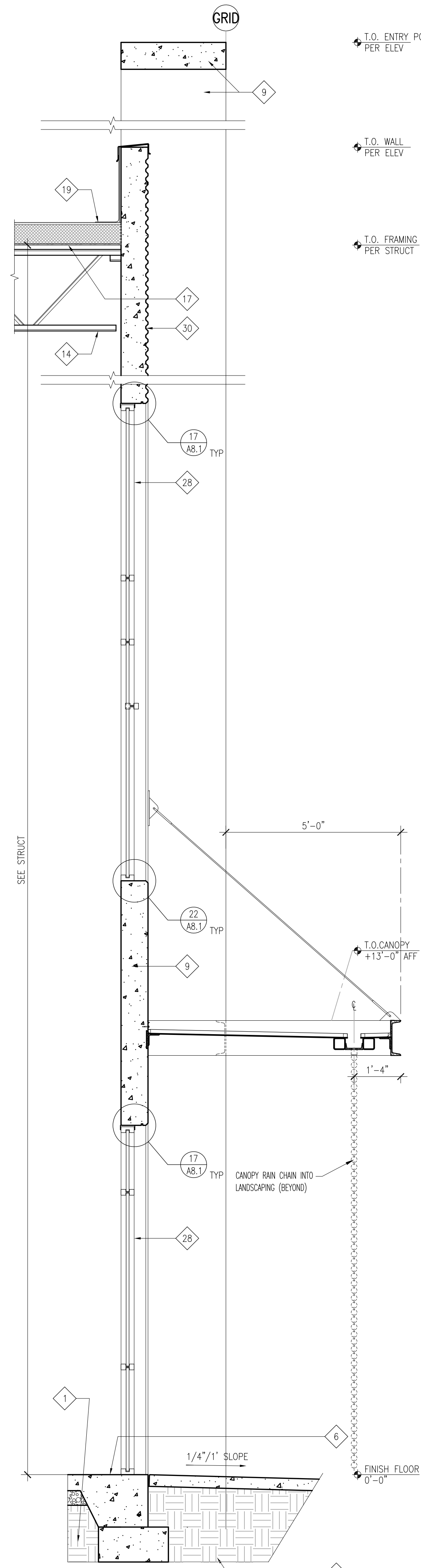
RELEASE FOR: PROGRESS PRINTING
TITLE: ENLARGED ELEVATIONS

DESIGNED BY: DRAWN BY:
REVIEWED BY: APPROVED BY:
DATE: 09-16-2021
PROJECT NO: 200902.24.139

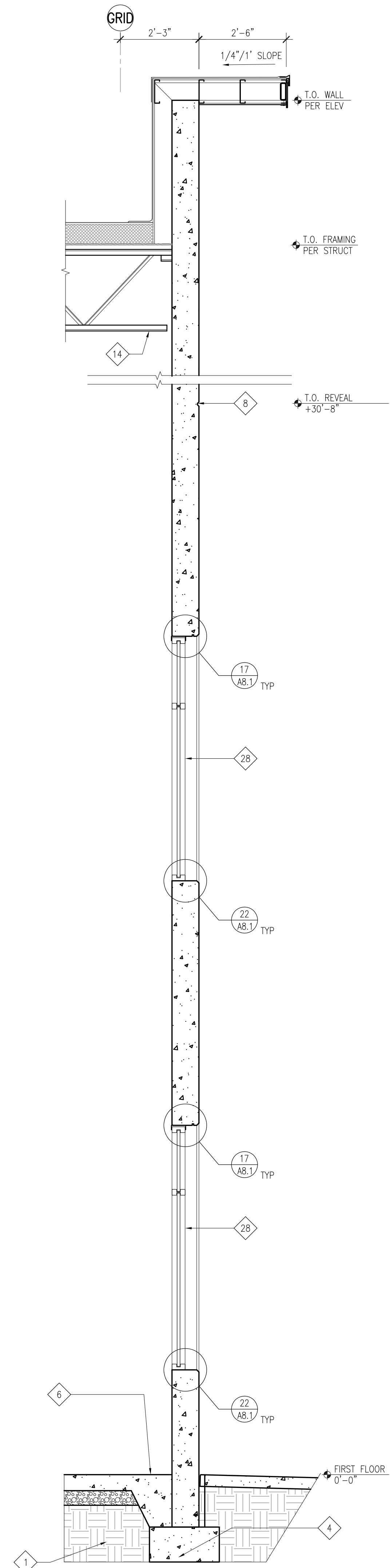
A4.2



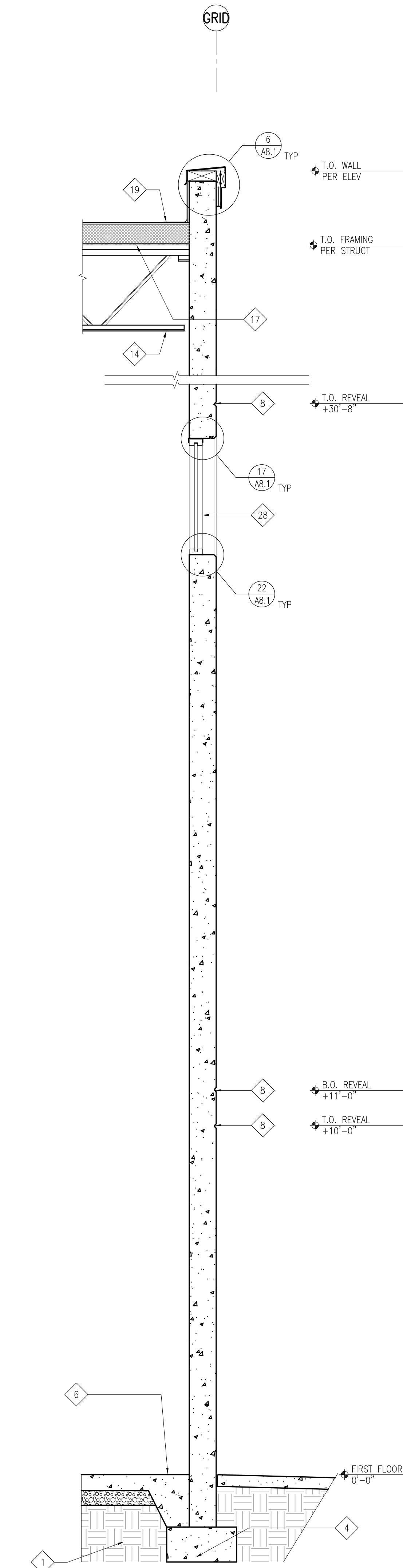
2 ENLARGED ELEVATION
SCALE: 1/8" = 1'-0"



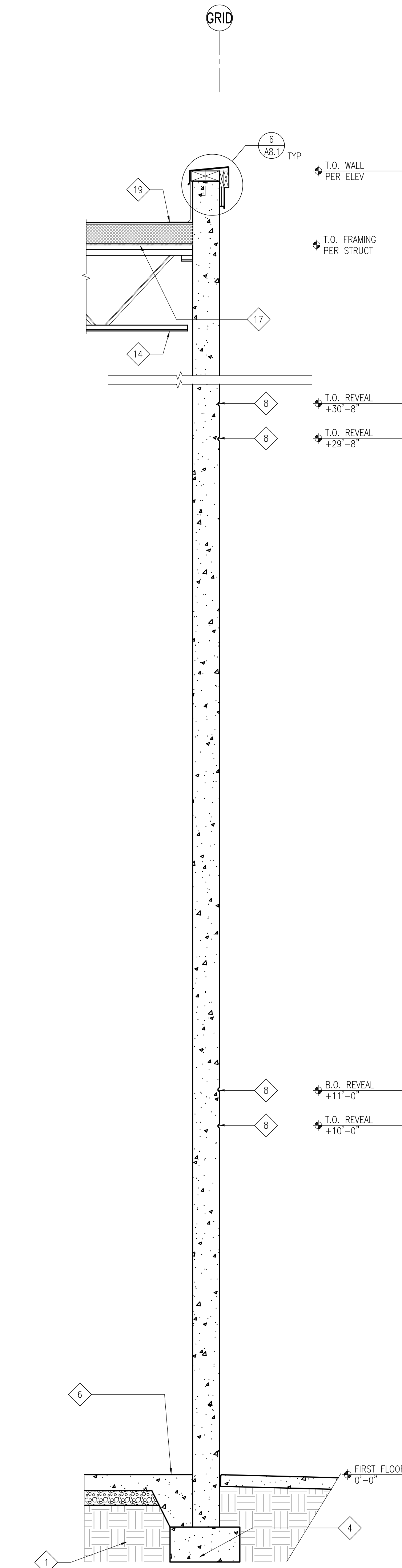
1 WALL SECTION AT ENTRY
SCALE: 1/2" = 1'-0"



2 WALL SECTION AT WINDOW SYSTEM
SCALE: 1/2" = 1'-0"



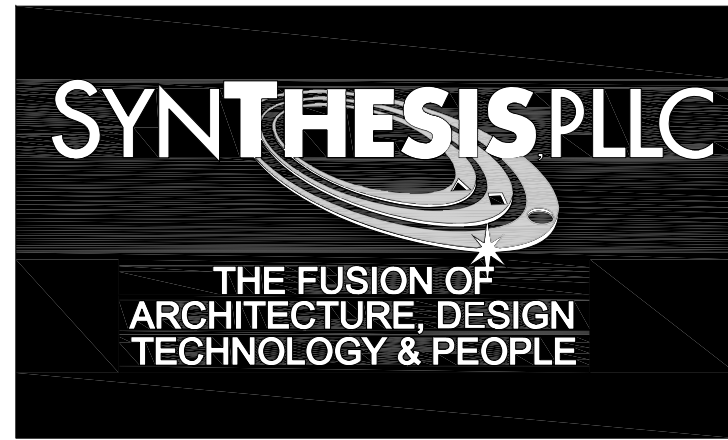
3 WALL SECTION AT WINDOW SYSTEM
SCALE: 1/2" = 1'-0"



4 TYPICAL WALL SECTION
SCALE: 1/2" = 1'-0"

KEYNOTES - WALL SECTIONS

- NOTE: NOT ALL KEYNOTES ARE USED
- 1 STRUCTURAL FILL
 - 2 CURTAIN BOARD BEYOND
 - 3 CONCRETE PAVING
 - 4 CONC FOOTING, SEE STRUCT DWGS FOR ELEVATION
 - 5 CONC WALK OR LANDING OVER COMPACTED FILL PER SOILS REPORT
 - 6 CONC SLAB-ON-GRADE ON GRAVEL CAPILLARY BREAK ON STRUCTURAL FILL PER SOILS REPORT
 - 7 SEALANT
 - 8 HORIZONTAL REVEAL, SEE DETAIL 13/AB.1, TYP UON
 - 9 SITE CAST CONC WALL PANEL, PAINT
 - 10 CANT
 - 11 STEEL ANGLE, SEE STRUCT DWGS.
 - 12 STEEL GIRDER, SEE STRUCTURAL FRAMING PLAN
 - 13 STEEL BEAM, PAINT. SEE STRUCTURAL FRAMING PLAN
 - 14 STEEL JOIST, SEE STRUCTURAL FRAMING PLAN
 - 15 TUBE STEEL COLUMN OR BEAM, SEE STRUCTURAL DRAWINGS
 - 16 FILTER FABRIC
 - 17 WOOD ROOF DECK, SEE STRUCTURAL DWGS
 - 18 WOOD NAILER AND BLOCKING
 - 19 RIGID INSULATION & PERIMETER WD BLKG AS REQD
 - 20 SINGLE-PLY MEMBRANE ROOF ASSEMBLY, CLASS B, OR HIGHER
 - 21 PREFINISHED METAL FASCIA
 - 22 DRIP FORMED IN CONC PANEL
 - 23 SURFACE REGLET
 - 24 CRUSHED ROCK
 - 25 DOCK BUMPER
 - 26 SECTIONAL OVERHEAD DOOR TRACK
 - 27 ALUMINUM WINDOW SYSTEM
 - 28 ALUMINUM STOREFRONT SYSTEM
 - 29 FOUNDATION DRAIN
 - 30 FORMLINER WITH "FLUTED RIB" PROFILE
 - 31 N/A
 - 32 STEEL CHANNELS, SEE STRUCTURAL DRAWINGS
 - 33 N/A
 - 34 WALL SCONCE LIGHT FIXTURE EA SIDE OF ENTRY DOOR.
 - 35 BELOW GRADE BITUMINOUS DAMP PROOFING



12503 NE Bel-Red Road, Suite 100
Bellevue, WA 98005
p 425 646 1818 f 425 646 4141



REVISIONS

ISSUE NO.	DATE	ITEM
3	04 08 2022	DESIGN REVIEW
2	02 02 2022	SEPA RESUBMITTAL
1	10 01 2021	SEPA SUBMITTAL

PROFESSIONAL STAMP

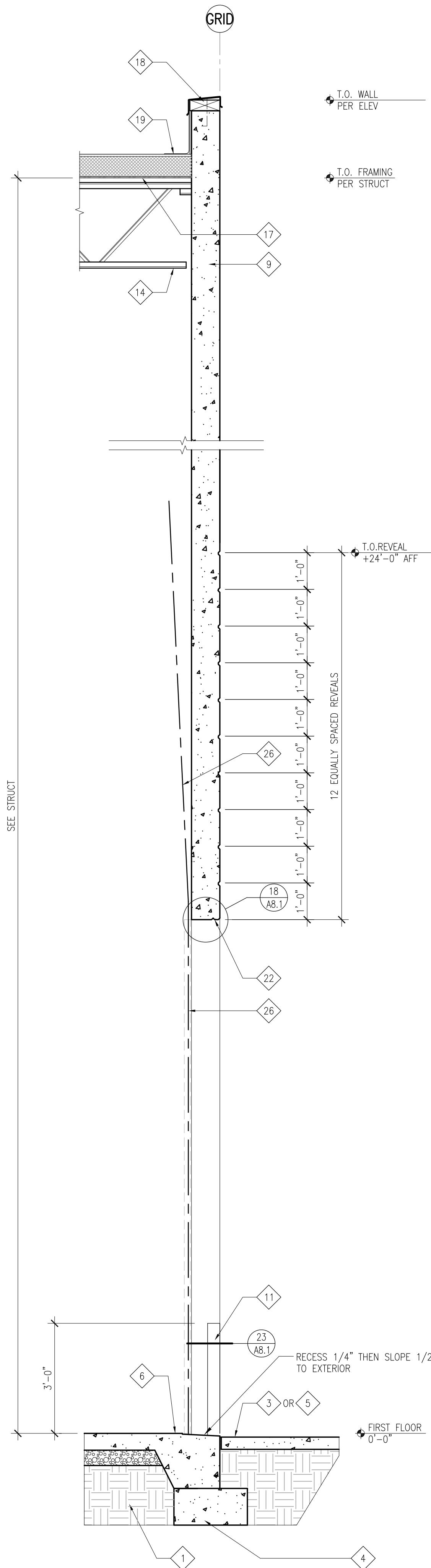
Digitally signed by Randy Brown
Date: 2022.04.08 13:10:35 -07'00'

PROJECT INFORMATION

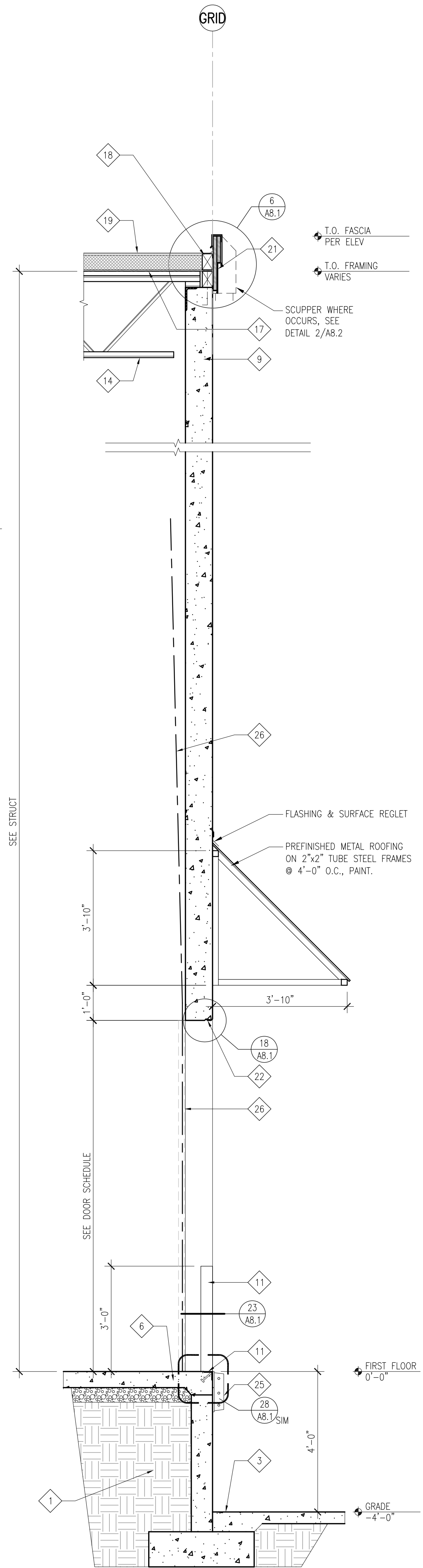
CAMAS BUSINESS CENTER-BUILDING A
4707 NW Lake Rd
Camas, WA

SHEET INFORMATION

RELEASE FOR: PROGRESS PRINTING
TITLE: WALL SECTIONS
DESIGNED BY: DRAWN BY:
REVIEWED BY: APPROVED BY:
DATE: 09-16-2021
PROJECT NO: 200902.24.139
SHEET NO: A4.3



1 SECTION AT GRADE DOOR
SCALE: 1/2" = 1'-0"

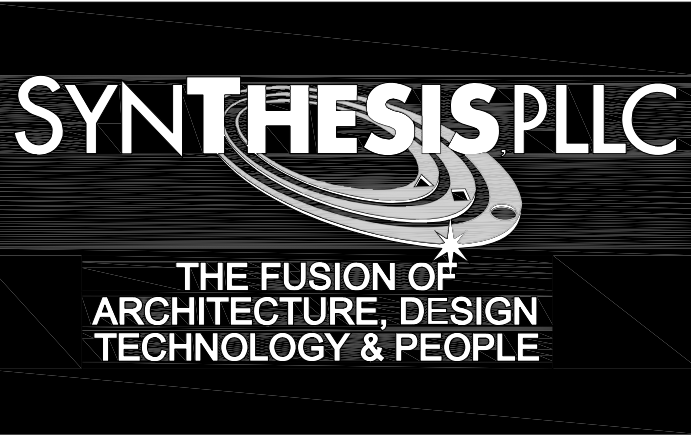


2 TYP SECTION AT DOCK DOOR
SCALE: 1/2" = 1'-0"

KEYNOTES - WALL SECTIONS

NOTE: NOT ALL KEYNOTES ARE USED

- 1 STRUCTURAL FILL
- 2 CURTAIN BOARD BEYOND
- 3 CONCRETE PAVING
- 4 CONC FOOTING, SEE STRUCT DWGS FOR ELEVATION
- 5 CONC WALK OR LANDING OVER COMPACTED FILL PER SOILS REPORT
- 6 CONC SLAB-ON-GRADE ON GRAVEL CAPILLARY BREAK ON STRUCTURAL FILL PER SOILS REPORT
- 7 SEALANT
- 8 HORIZONTAL REVEAL, SEE DETAIL 13/AB.1, TYP UON
- 9 SITE CAST CONC WALL PANEL, PAINT
- 10 CANT
- 11 STEEL ANGLE, SEE STRUCT DWGS.
- 12 STEEL GIRDER, SEE STRUCTURAL FRAMING PLAN
- 13 STEEL BEAM, PAINT. SEE STRUCTURAL FRAMING PLAN
- 14 STEEL JOIST, SEE STRUCTURAL FRAMING PLAN
- 15 TUBE STEEL COLUMN OR BEAM, SEE STRUCTURAL DRAWINGS
- 16 FILTER FABRIC
- 17 WOOD ROOF DECK, SEE STRUCTURAL DWGS
- 18 WOOD NAILER AND BLOCKING
- 19 RIGID INSULATION & PERIMETER WD BLKG AS REQD
- 20 SINGLE-PLY MEMBRANE ROOF ASSEMBLY, CLASS B, OR HIGHER
- 21 PREFINISHED METAL FASCIA
- 22 DRIP FORMED IN CONC PANEL
- 23 SURFACE REGLET
- 24 CRUSHED ROCK
- 25 DOCK BUMPER
- 26 SECTIONAL OVERHEAD DOOR TRACK
- 27 ALUMINUM WINDOW SYSTEM
- 28 ALUMINUM STOREFRONT SYSTEM
- 29 FOUNDATION DRAIN
- 30 FORMLINER WITH "FLUTED RIB" PROFILE
- 31 N/A
- 32 STEEL CHANNELS, SEE STRUCTURAL DRAWINGS
- 33 N/A
- 34 WALL SCONCE LIGHT FIXTURE EA SIDE OF ENTRY DOOR.
- 35 BELOW GRADE BITUMINOUS DAMP PROOFING



12503 NE Bel-Red Road, Suite 100
Bellevue, WA 98005
p 425 646 1818 f 425 646 4141



REVISIONS

ISSUE NO.	DATE	ITEM
3	04 08 2022	DESIGN REVIEW
2	02 02 2022	SEPA RESUBMITTAL
1	10 01 2021	SEPA SUBMITTAL

PROFESSIONAL STAMP

Digitally signed
by Randy Brown
Date: 2022.04.08
13:10:35 -07'00'

PROJECT INFORMATION

CAMAS BUSINESS CENTER-BUILDING A
4707 NW Lake Rd
Camas, WA

SHEET INFORMATION

RELEASE FOR: PROGRESS PRINTING
TITLE: WALL SECTIONS
DESIGNED BY: DRAWN BY:
REVIEWED BY: APPROVED BY:
DATE: 09-16-2021 SHEET NO: A4.4
PROJECT NO: 200902.24.139