

9/19/2024

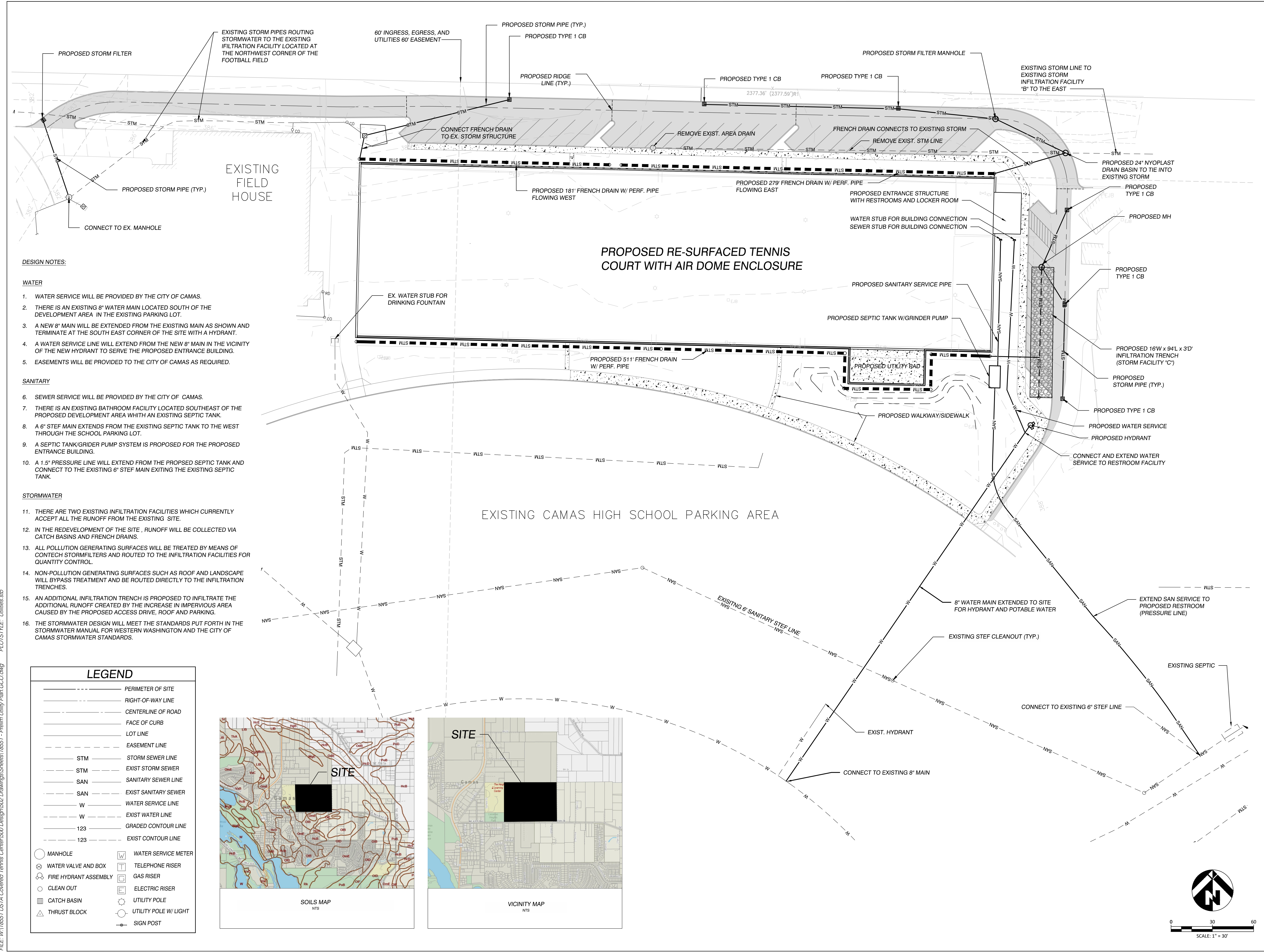
USTA COVERED TENNIS CENTER
CAMAS, WASHINGTON
PRELIMINARY UTILITY PLAN

REVISIONS:

JOB NO.: 18551
DATE: 9/16/2024
SCALE: H:1"=40' V: N/A
DESIGNED BY: MDR
DRAWN BY: MDR
CHECKED BY: GCO

PRELIMINARY

C1.0



DESIGN NOTES:

WATER

1. WATER SERVICE WILL BE PROVIDED BY THE CITY OF CAMAS.
2. THERE IS AN EXISTING 8" WATER MAIN LOCATED SOUTH OF THE DEVELOPMENT AREA IN THE EXISTING PARKING LOT.
3. A NEW 8" MAIN WILL BE EXTENDED FROM THE EXISTING MAIN AS SHOWN AND TERMINATE AT THE SOUTH EAST CORNER OF THE SITE WITH A HYDRANT.
4. A WATER SERVICE LINE WILL EXTEND FROM THE NEW 8" MAIN IN THE VICINITY OF THE NEW HYDRANT TO SERVE THE PROPOSED ENTRANCE BUILDING.
5. EASEMENTS WILL BE PROVIDED TO THE CITY OF CAMAS AS REQUIRED.

SANITARY

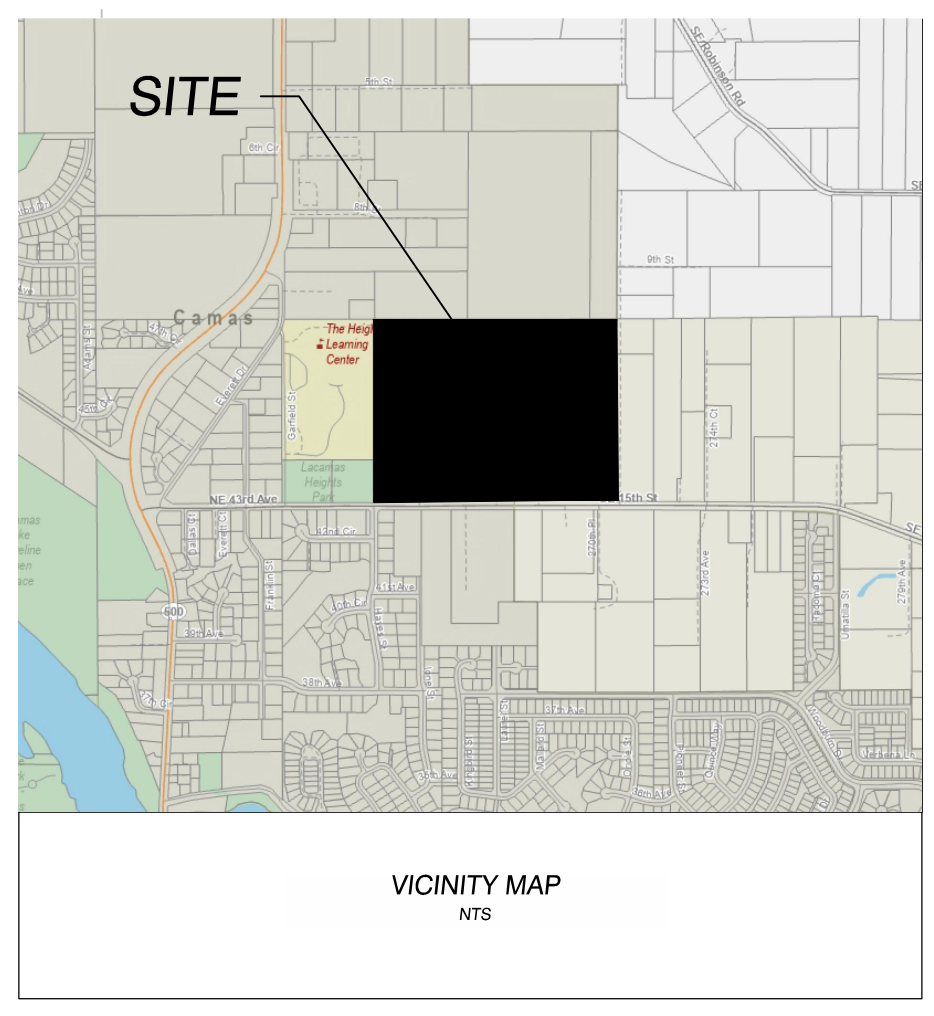
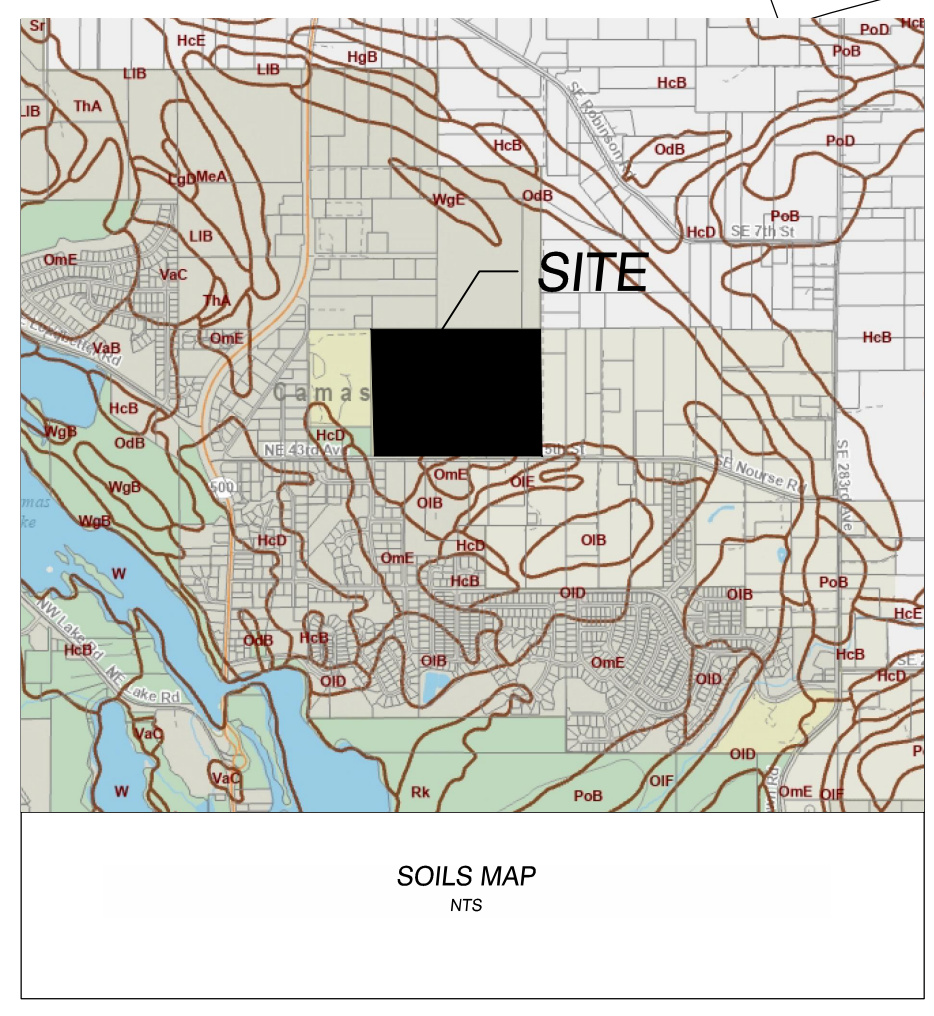
6. SEWER SERVICE WILL BE PROVIDED BY THE CITY OF CAMAS.
7. THERE IS AN EXISTING BATHROOM FACILITY LOCATED SOUTHEAST OF THE PROPOSED DEVELOPMENT AREA WITH AN EXISTING SEPTIC TANK.
8. A 6" STEF MAIN EXTENDS FROM THE EXISTING SEPTIC TANK TO THE WEST THROUGH THE SCHOOL PARKING LOT.
9. A SEPTIC TANK/GRINDER PUMP SYSTEM IS PROPOSED FOR THE PROPOSED ENTRANCE BUILDING.
10. A 1.5" PRESSURE LINE WILL EXTEND FROM THE PROPOSED SEPTIC TANK AND CONNECT TO THE EXISTING 6" STEF MAIN EXITING THE EXISTING SEPTIC TANK.

STORMWATER

11. THERE ARE TWO EXISTING INFILTRATION FACILITIES WHICH CURRENTLY ACCEPT ALL THE RUNOFF FROM THE EXISTING SITE.
12. IN THE REDEVELOPMENT OF THE SITE, RUNOFF WILL BE COLLECTED VIA CATCH BASINS AND FRENCH DRAINS.
13. ALL POLLUTION GENERATING SURFACES WILL BE TREATED BY MEANS OF CONTECH STORMFILTERS AND ROUTED TO THE INFILTRATION FACILITIES FOR QUANTITY CONTROL.
14. NON-POLLUTION GENERATING SURFACES SUCH AS ROOF AND LANDSCAPE WILL BYPASS TREATMENT AND BE ROUTED DIRECTLY TO THE INFILTRATION TRENCHES.
15. AN ADDITIONAL INFILTRATION TRENCH IS PROPOSED TO INFILTRATE THE ADDITIONAL RUNOFF CREATED BY THE INCREASE IN IMPERVIOUS AREA CAUSED BY THE PROPOSED ACCESS DRIVE, ROOF AND PARKING.
16. THE STORMWATER DESIGN WILL MEET THE STANDARDS PUT FORTH IN THE STORMWATER MANUAL FOR WESTERN WASHINGTON AND THE CITY OF CAMAS STORMWATER STANDARDS.

LEGEND

---	PERIMETER OF SITE
---	RIGHT-OF-WAY LINE
---	CENTERLINE OF ROAD
---	FACE OF CURB
---	LOT LINE
---	EASEMENT LINE
STM	STORM SEWER LINE
STM	EXIST STORM SEWER
SAN	SANITARY SEWER LINE
SAN	EXIST SANITARY SEWER
W	WATER SERVICE LINE
W	EXIST WATER LINE
123	GRADED CONTOUR LINE
123	EXIST CONTOUR LINE
○	MANHOLE
⊗	WATER VALVE AND BOX
⊕	FIRE HYDRANT ASSEMBLY
○	CLEAN OUT
▢	CATCH BASIN
△	THRUST BLOCK
⊠	WATER SERVICE METER
⊠	TELEPHONE RISER
⊠	GAS RISER
⊠	ELECTRIC RISER
⊠	UTILITY POLE
⊠	UTILITY POLE W/ LIGHT
⊠	SIGN POST



FILE: W118551 USTA Covered Tennis Center 500 Design 502 Drawings Sheets 18551 - Prelim Utility Plan GCO.dwg PLOT STYLE: Utilities.sbt

