

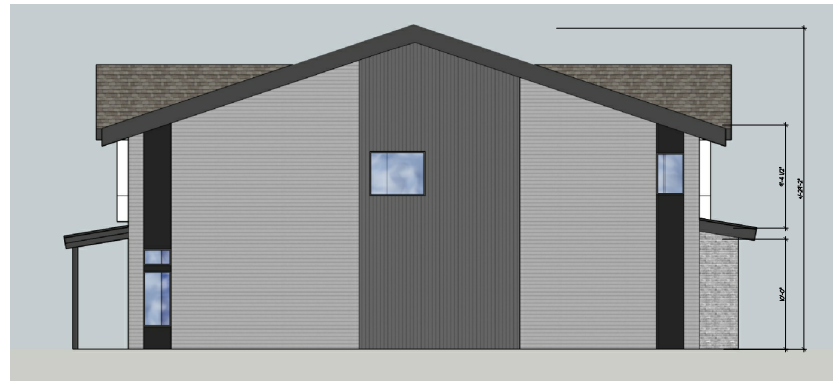


14900 INTERURBAN AVE SOUTH  
SUITE 138  
TUKWILA, WASHINGTON 98168  
(206) 854-5500 | FAX (206) 854-5501  
ronhovdearchitects.com



**CAMAS MEADOWS HOLE 9**  
RESIDENTIAL COMMUNITY

CITY OF CAMAS, WA 98  
JURISDICTION: CLARK COUNTY, WA



**2 LEFT ELEVATION (END UNIT)**  
SCALE: 1/8" = 1'-0"



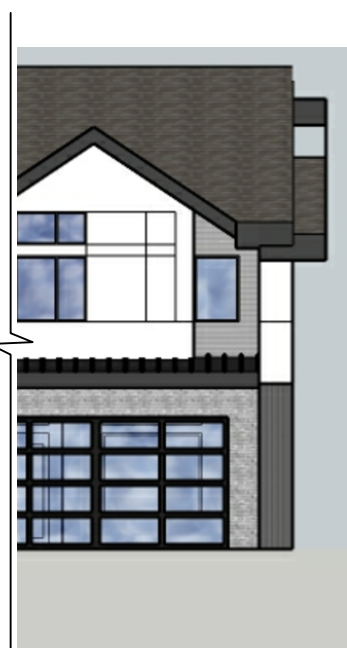
**3 RIGHT ELEVATION (END UNIT)**  
SCALE: 3/16" = 1'-0"



**3 RIGHT ELEVATION (END UNIT) (w/ pop-out)**  
SCALE: 3/16" = 1'-0"



**4 REAR ELEVATION**  
SCALE: 3/16" = 1'-0"



**4 REAR ELEVATION (w/ pop-out)**  
SCALE: 3/16" = 1'-0"



**1 FRONT ELEVATION**  
SCALE: 3/16" = 1'-0"

FOR LOT 36 FOR LOT 37 (AND OPP. FOR LOT 39)



**4 REAR ELEVATION - ALTERNATE**  
SCALE: 3/16" = 1'-0"

**FLAG NOTES**

- ① BLACK/GRAY BRICK "BASE" ~ (ALT-HARDIE ARTISAN "SHIP-LAP")
- ② METAL WRAPPED ACCENT BELLY BAND - COLOR BLACK
- ③ PRE-FINISHED METAL RAILING - COLOR BLACK
- ④ PRE-FINISHED METAL ROOFING - COLOR BLACK
- ⑤ COMPOSITION ASPHALT SHINGLES
- ⑥ VINYL WINDOWS - COLORED BLACK
- ⑦ STEPPED OR METAL WRAPPED FASCIA - COLOR MEDIUM GREY

**FINISH/PAINT SCHEDULE**

- 8-1/4" FIBER CEMENT HORIZONTAL LAP SIDING (1" REVEAL)  
COLOR: LIGHT GREY
- HARDIE MULTI GROOVE VERTICAL PANEL SIDING  
COLOR: MEDIUM GREY
- HARDIE ARTISAN SHIPLAP SIDING OR HARDIE PANEL  
COLOR: WHITE
- HARDIE ARTISAN SHIPLAP SIDING OR HARDIE PANEL  
COLOR: BLACK

**GENERAL NOTES**

1. ALL EXTERIOR LIGHTING SHALL BE FITTED WITH SHIELDING TO CONFINE LIGHTING TO PROJECT SITE.
2. ADDRESS TO BE POSTED AND PLAINLY VISIBLE FROM FRONTAGE STREET. (12" HIGH MIN. IV CONTRASTING BACKGROUND) PER IFC SECTION 505J (CONTRACTOR TO PROVIDE 12" STAMPED ALUMINUM NUMBER/ADDRESS WITH EXPANSION ANCHORS IN CONCRETE)
3. KNOX EMERGENCY ACCESS KEY BOX IS REQUIRED FOR BUILDING, WITH SPECIFIC MOUNTING LOCATIONS APPROVED BY THE CITY FIRE DEPARTMENT. RECESSED MOUNT KEY BOXES ARE REQUIRED. BUILDING ACCESS KEYS SHALL BE MARKED AND PLACED IN BOX PRIOR TO FINAL INSPECTION TO ENSURE EMERGENCY ACCESS. THE BUILDING OWNER/OCCUPANTS SHALL PROVIDE REPLACEMENT KEYS WHENEVER LOCKS ARE CHANGED.

**2018 IRC CONSTRUCTION TYPE: VB**

10		
9		
8		
7		
6		
5		
4		
3		
2		
1		
NO.	DATE	DESCRIPTION
REVISIONS		

SHEET CONTENTS:  
**EXTERIOR ELEVATIONS**

**20FT 2-CAR TOWNHOME**

JOB NO.: 2022.45 SHEET NO.:  
DRAWN BY: LWS  
CHECKED BY: T.R.  
DATE:  
**A4.2**