

Prepared By: Christopher D. Kidd, AIA, AIA, RIBA
Washington License # 6529
Expires: July 10, 2024
ARCHITECT

Christopher Donald
Kidd
AIA, AIA, RIBA

N48W16500 Lisbon Road - Menomonee Falls, Wisconsin 53051-6630
P.262.301.0250 F.262.301.0250 ari@cdkare.com

Proposed Medical Office Building for:
FKC - Camas
3409 NW Camas Meadows Drive
Camas, Washington 98607



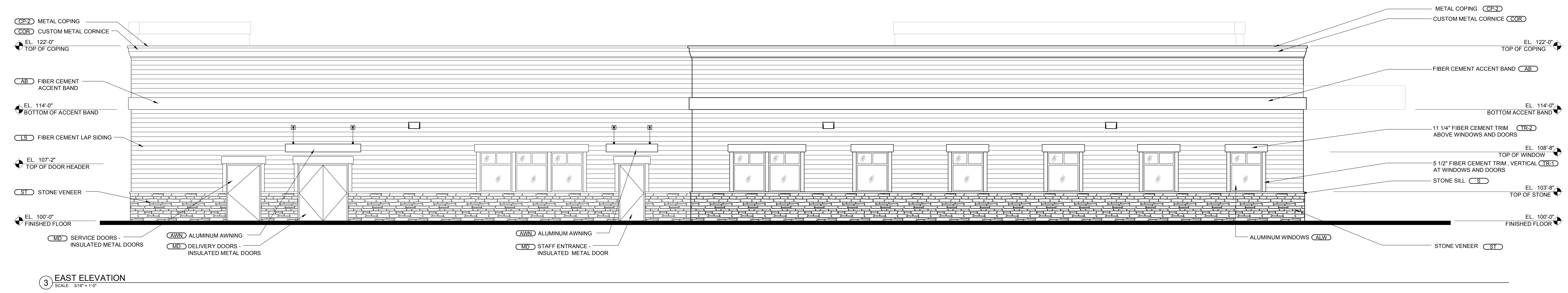
These drawings, as instruments of service, remain the property of the Architect or Engineer. Any changes, publication, or use of any kind is prohibited unless expressly authorized by said party. Copyright 2022.

Drafted By: EMC
Checked By: ZSH
Date Drafted: XX/XX/XXXX
Project #: 22003-01

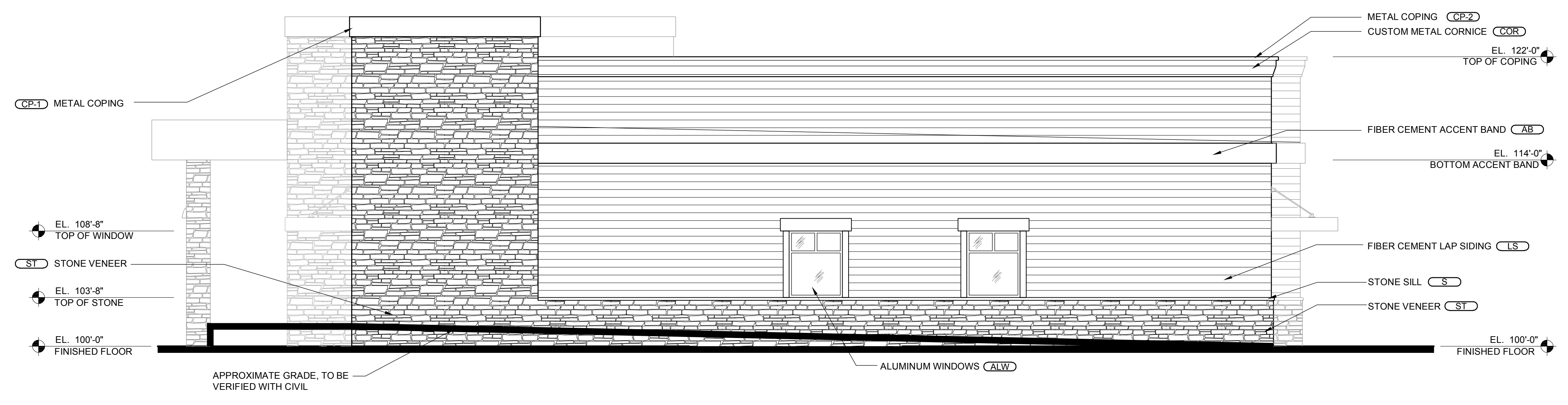
REVISION	REVISION DESCRIPTION	DATE

EXTERIOR ELEVATIONS

A310



3 EAST ELEVATION
SCALE: 3/16" = 1'-0"



4 SOUTH ELEVATION
SCALE: 3/16" = 1'-0"

MANUF COLOR FINISH PRODUCT	DESCRIPTION	MANUF COLOR FINISH PRODUCT	DESCRIPTION
(ST) ELDORADO STONE SAWTOOTH (W/ BROWN MASONRY MORTAR) STANDARD RUSTIC LEDGE	(AWN) LAWRENCE FABRIC MEDIUM BRONZE DURA TECH (PVDF) OR EQUAL LFS-LFA	(CE-1) PETERSEN ALUMINUM MEDIUM BRONZE KYNAR 500 COATING PAC-TITE TAPERED COPING	(CE-2) PETERSEN ALUMINUM SIERRA TAN KYNAR 500 COATING PAC-TITE TAPERED COPING
(S) ELDORADO STONE SAND STANDARD SNAPPED EDGE WAINSCOT SILL	(MS) AEP SPAN MEDIUM BRONZE DURA TECH (PVDF) TBD	(COOR) CUSTOM SIERRA TAN KYNAR 500 COATING CUSTOM	(ALW) KAWNEER - STOREFRONT SYSTEM CLEAR ANODIZED STANDARD TRIFAB V6451T
(TR-1) ELDORADO STONE BUCKSKIN STANDARD ASHLAR TRIM STONE: 6'X8'X2"	(LS) JAMES HARDIE - FIBER CEMENT SANDS OF TIME (SHERWIN-WILLIAMS SW6101) SELECT CEDARMILL (PRIMED) FLANK LAP SIDING	(ALS) RECORD USA CLEAR ANODIZED STANDARD AUTOMATIC SLIDING DOOR	(MD) STEELCRAFT SANDS OF TIME (SHERWIN-WILLIAMS SW6101) PAINTED STEEL INSULATE DOORS AND FRAMES
(TR-2) ELDORADO STONE BUCKSKIN STANDARD ASHLAR TRIM STONE: 6'X8'X2"	(AB) JAMES HARDIE - FIBER CEMENT PORTABELLO (SHERWIN-WILLIAMS SW6102) RUSTIC (PRIMED) TRIM: JAMB 5' X1-11/4"	(ALD) KAWNEER THERMAL ENTRANCE CLEAR ANODIZED STANDARD 350T	
(AB) JAMES HARDIE - FIBER CEMENT PORTABELLO (SHERWIN-WILLIAMS SW6102) RUSTIC (PRIMED) TRIM: HEAD 11-1/4" X 2"			
(MD) SERVICE DOORS - INSULATED METAL DOORS			

