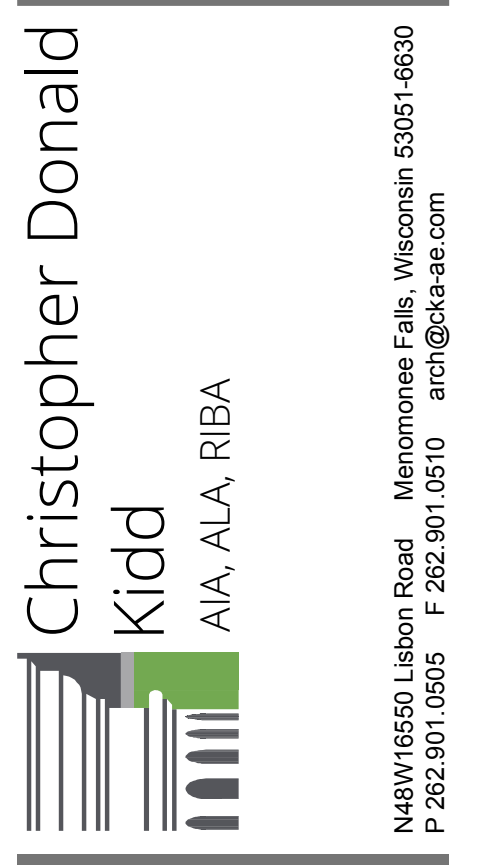
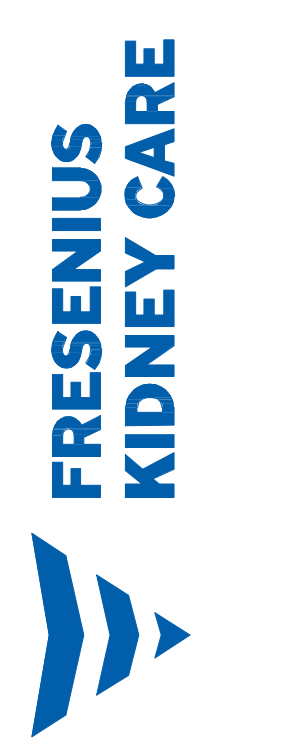


Prepared By: Christopher D. Kidd, AIA, AIA, RIBA
 Washington License # 5629
 Expires: July 10, 2024
ARCHITECT



Proposed Medical Office Building for:
FKC - Camas
 3409 NW Camas Meadows Drive
 Camas, Washington 98607



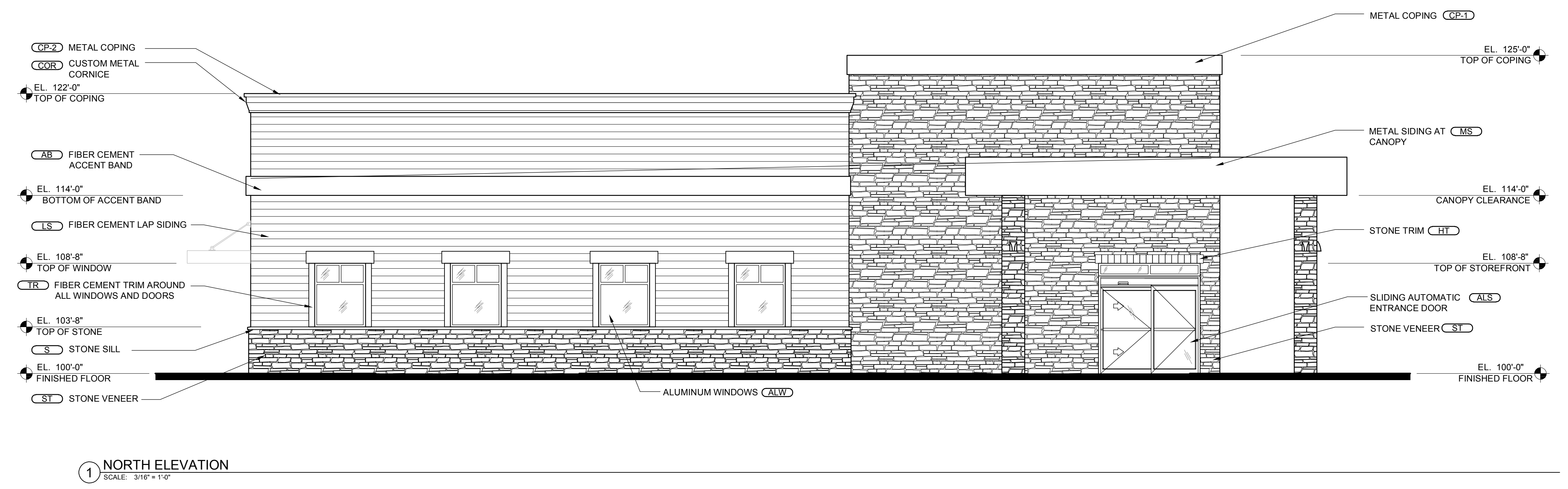
These drawings, as instruments of service, remain the property of the Architect or Engineer. Any changes, publication, or use of any kind is prohibited unless expressly authorized by said party. Copyright 2022.

Drafted By: EMC
 Checked By: ZSH
 Date Drafted: XX/XX/XXXX
 Project #: 22003-01

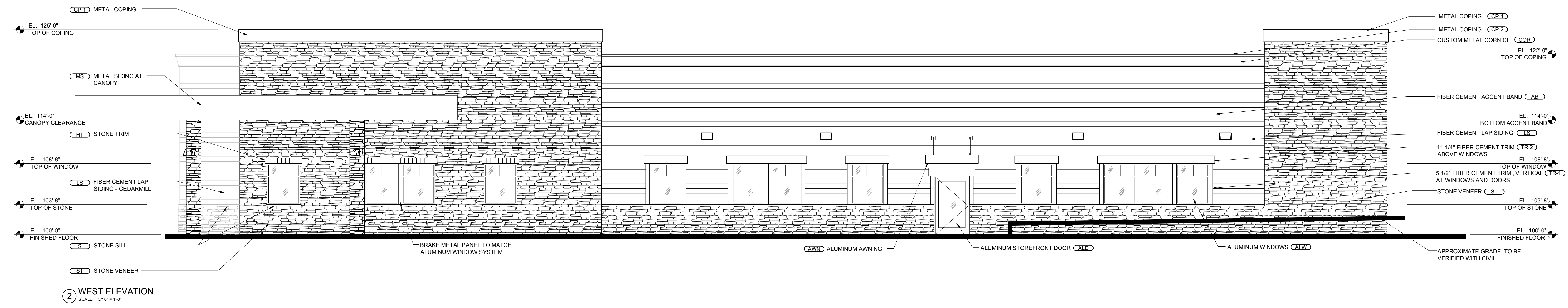
NO.	DATE	REVISION DESCRIPTION

EXTERIOR ELEVATIONS

A300



1 NORTH ELEVATION
 SCALE: 3/16" = 1'-0"



2 WEST ELEVATION
 SCALE: 3/16" = 1'-0"

EXTERIOR FINISHES LEGEND			
(ST) MANUF COLOR FINISH PRODUCT	ELDORADO STONE SAWTOOTH (W/ BROWN MASONRY MORTAR) STANDARD RUSTIC LEDGE	(AWN) MANUF COLOR FINISH PRODUCT	LAWRENCE FABRIC MEDIUM BRONZE DURA TECH (PVDF) OR EQUAL LFS-LFA
(S) MANUF COLOR FINISH PRODUCT	ELDORADO STONE SAND STANDARD SNAPPED EDGE WAINSCOT SILL	(COP1) MANUF COLOR FINISH PRODUCT	PETERSEN ALUMINUM MEDIUM BRONZE KYNAR 500 COATING PAC-TITE TAPERED COPING
(HT) MANUF COLOR FINISH PRODUCT	ELDORADO STONE BUCKSKIN STANDARD ASHLAR TRIM STONE: 6"x8"x2"	(COP2) MANUF COLOR FINISH PRODUCT	PETERSEN ALUMINUM SIERRA TAN KYNAR 500 COATING PAC-TITE TAPERED COPING
(MS) MANUF COLOR FINISH PRODUCT	AEP SPAN MEDIUM BRONZE DURA TECH (PVDF) TBD	(COR2) MANUF COLOR FINISH PRODUCT	CUSTOM SIERRA TAN KYNAR 500 COATING CUSTOM
(LS) MANUF COLOR FINISH PRODUCT	JAMES HARDIE - FIBER CEMENT SANDS OF TIME (SHERWIN-WILLIAMS SW6101) SELECT CEDARMILL (PRIMED) PLANK LAP SIDING	(ALW) MANUF COLOR FINISH PRODUCT	KAWNEER - STOREFRONT SYSTEM CLEAR ANODIZED STANDARD TRIFAB VG451T
(TR1) MANUF COLOR FINISH PRODUCT	JAMES HARDIE - FIBER CEMENT PORTABELLO (SHERWIN-WILLIAMS SW6102) RUSTIC (PRIMED) TRIM: JAMB 5" X 1-1/4"	(ALS) MANUF COLOR FINISH PRODUCT	RECORD USA CLEAR ANODIZED STANDARD AUTOMATIC SLIDING DOOR
(TR2) MANUF COLOR FINISH PRODUCT	JAMES HARDIE - FIBER CEMENT PORTABELLO (SHERWIN-WILLIAMS SW6102) RUSTIC (PRIMED) TRIM: HEAD 11-1/4" X 2"	(ALD) MANUF COLOR FINISH PRODUCT	KAWNEER THERMAL ENTRANCE CLEAR ANODIZED STANDARD 350T
(AB) MANUF COLOR FINISH PRODUCT	JAMES HARDIE - FIBER CEMENT TEA CHEST (SHERWIN-WILLIAMS SW6103) FINE SAND (PRIMED) ARCHITECTURAL PANEL (CUT TO MATCH ELEV.)	(MD) MANUF COLOR FINISH PRODUCT	STEELCRAFT SANDS OF TIME (SHERWIN-WILLIAMS SW6101) PAINTED STEEL INSULATE DOORS AND FRAMES

