

Reserve at Green Mountain

Located in the SE ¼ of Section 21, T2N, R3E and in the SW ¼ of Section 21, T2N, R3E, W.M. Camas, Washington



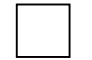

GENERAL NOTES

APPLICANT:
Pacific Lifestyle Homes
11815 NE 99th Street
Vancouver, WA 98682
Office (360) 304-9901

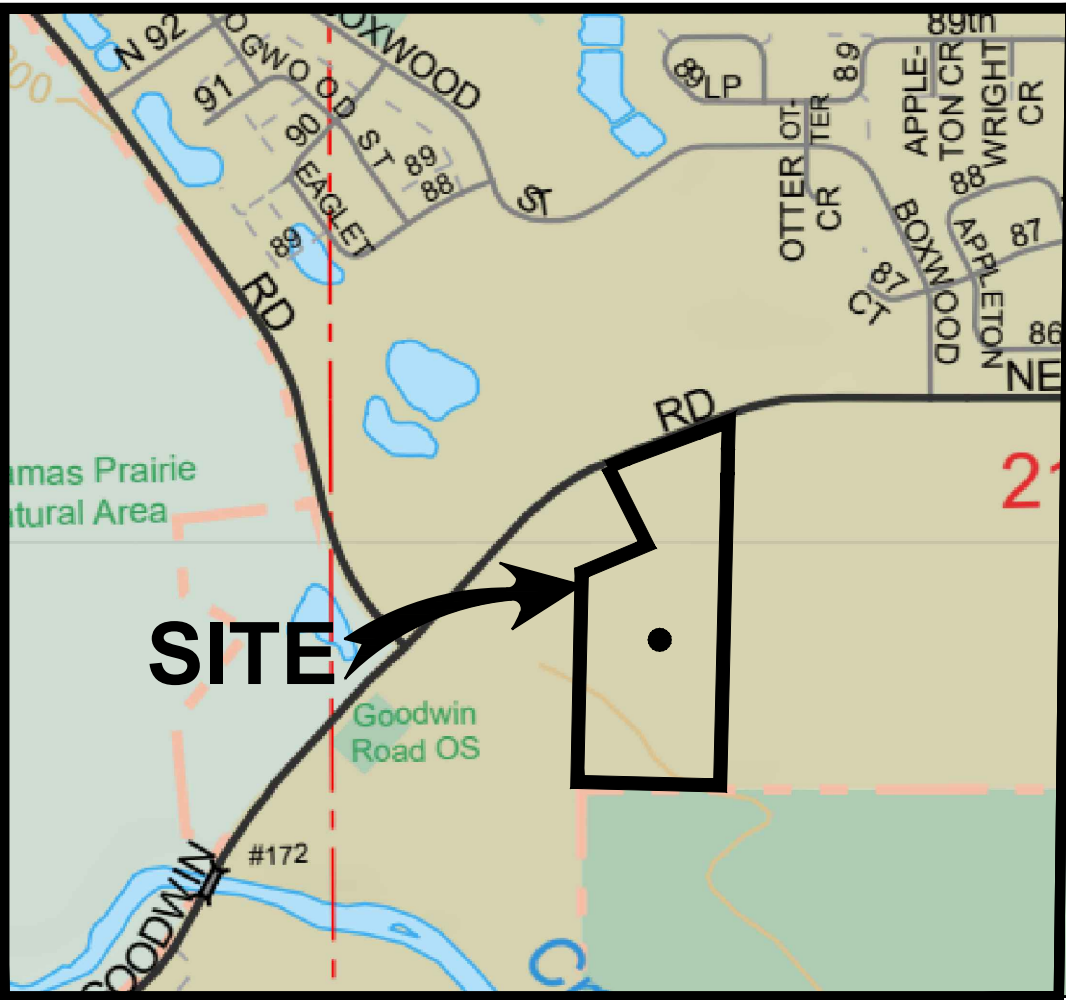
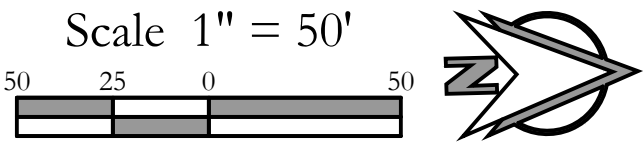
OWNER:
Marwan Bahu
PO Box 744
San Clemente, CA 92672

CIVIL ENGINEER:
PLS Engineering
Contact: Travis Johnson, PE
604 W Evergreen Blvd
Vancouver, WA 98660
PH: (360) 944-6519
pm@plsengineering.com

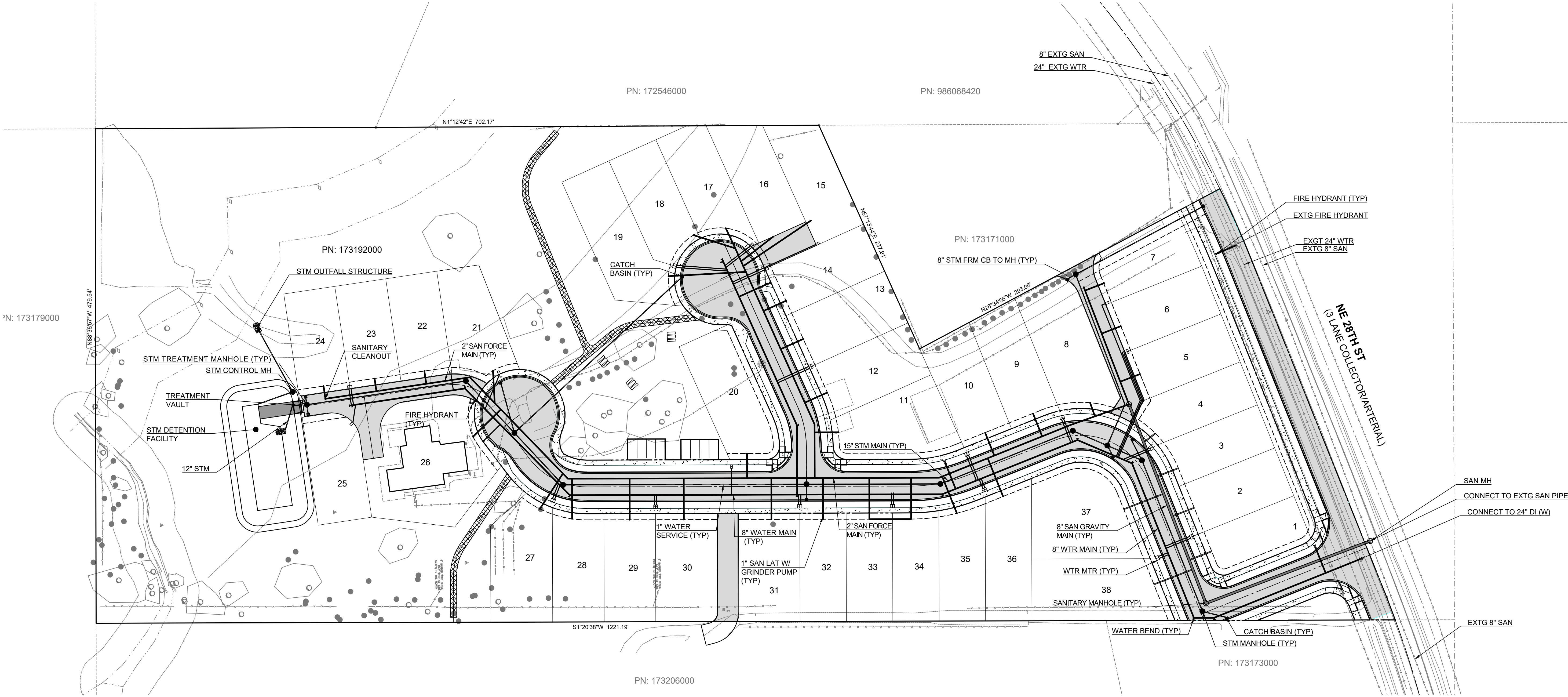
SITE ADDRESS:
Parcel # 173192-000
2625 NE GOODWIN RD Camas,
WA 98607

Legend	
Proposed Asphalt Concrete	
Proposed Cement Concrete	
Proposed Wood Chips	
Proposed Gravel	

UTILITY PIPE SIZING NOTE:
The utility pipe sizes listed are for preliminary purposes only, and are subject to change as part of the final design.



VICINITY MAP
NOT TO SCALE



Utility Plan For:

Reserve at Green Mountain

A Subdivision Located In The City Of Camas, Washington

Engineering - Surveying - Planning | 604 W. Evergreen Blvd., Vancouver, WA 98660 | PH (360) 944-6519 | Fax (360) 944-6539

PLS ENGINEERING

Revisions

1	2	3	4	5	6

Project No. 3927	
SCALE:	HE: 1" = 50' V: N/A
DESIGNED BY:	CIHJ
DRAFTED BY:	CIHJ
REVIEWED BY:	TGJ

3
6