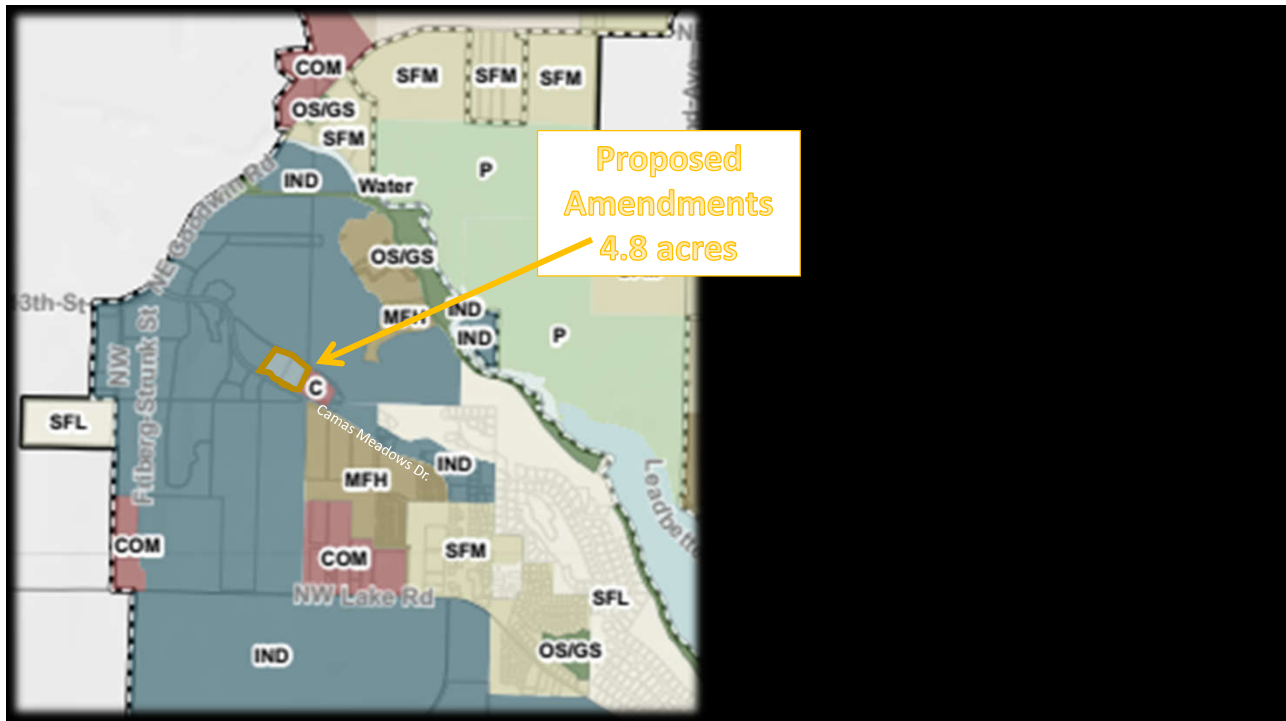




1

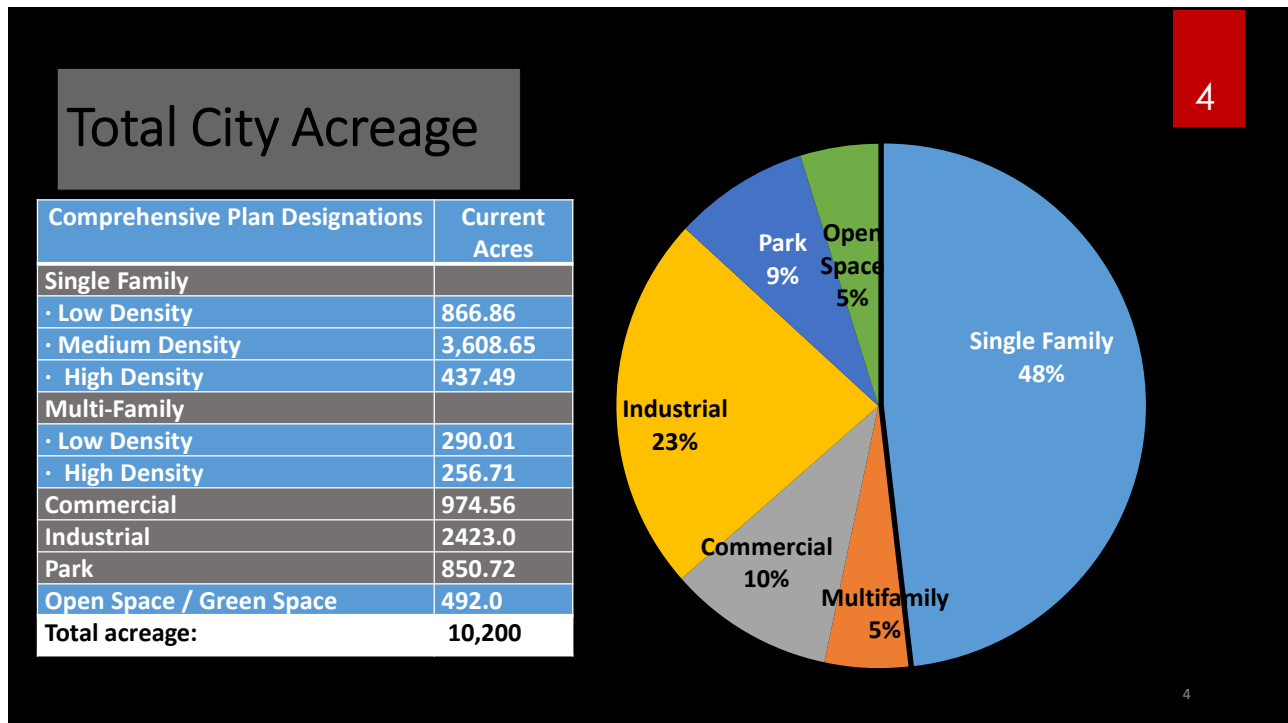


2



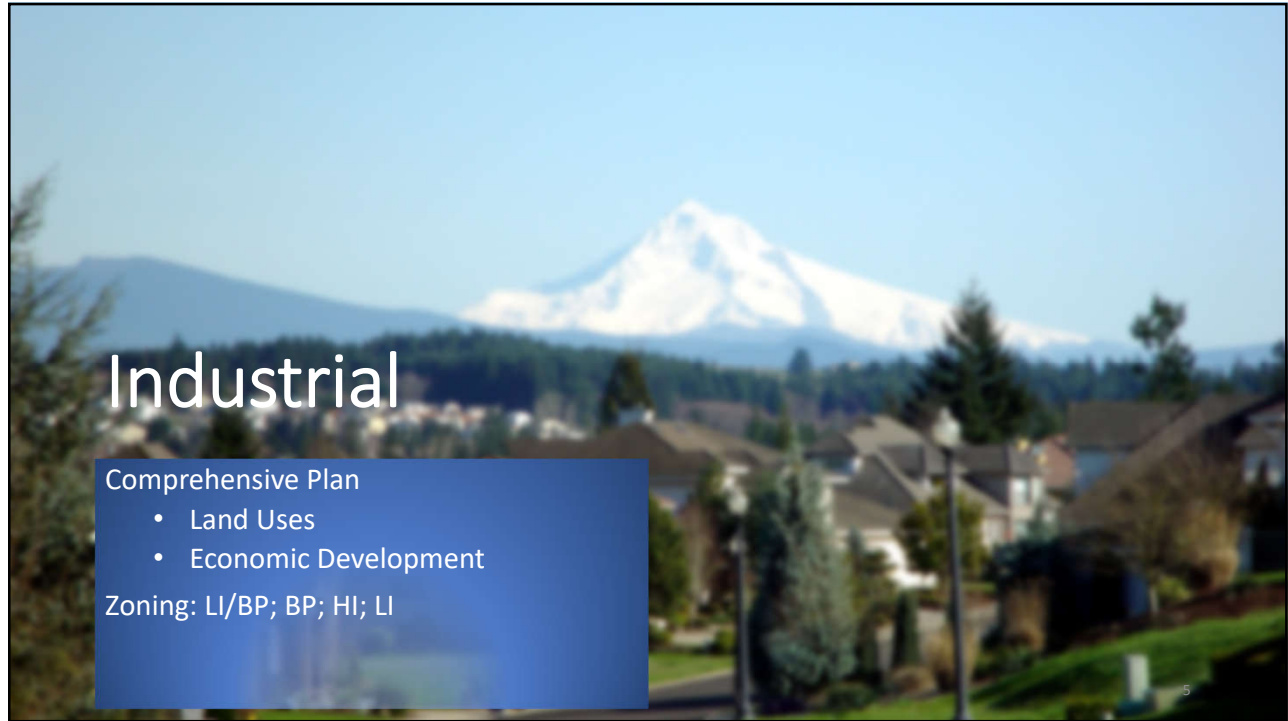
Current Comprehensive Plan Map Adopted by Ord. 20-006

3

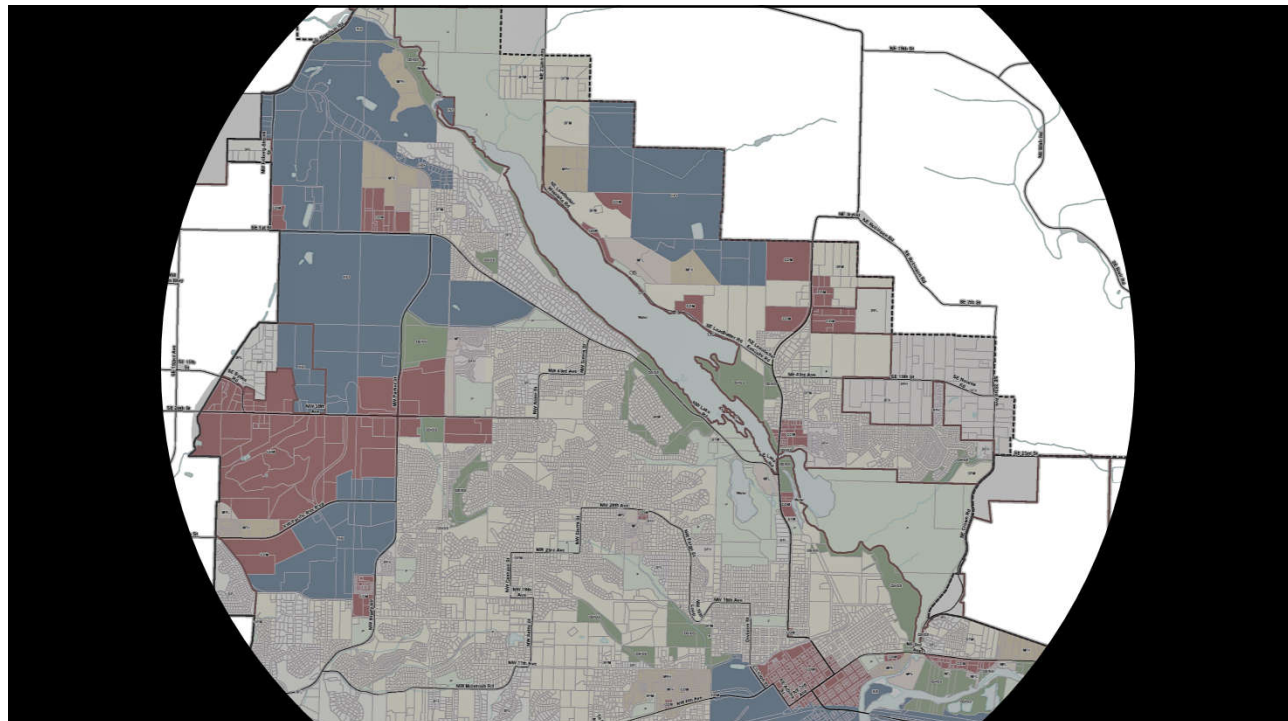


Total City Acreage

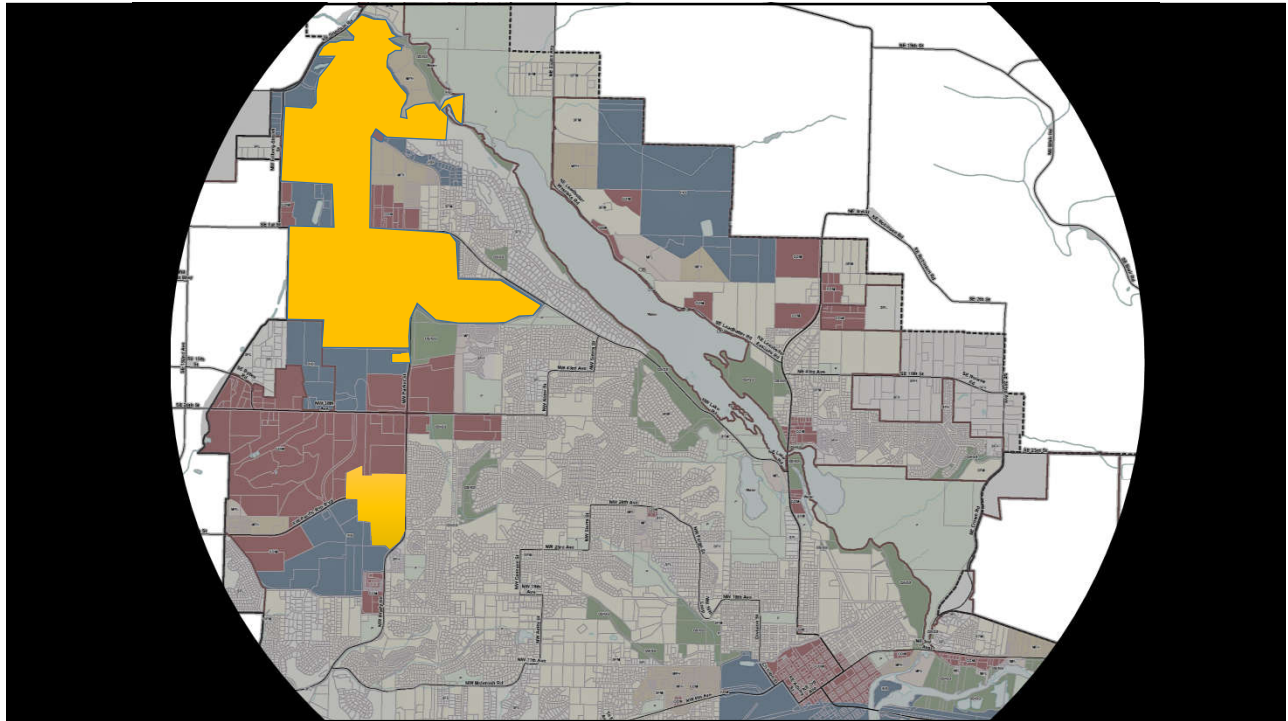
4



5



6



7

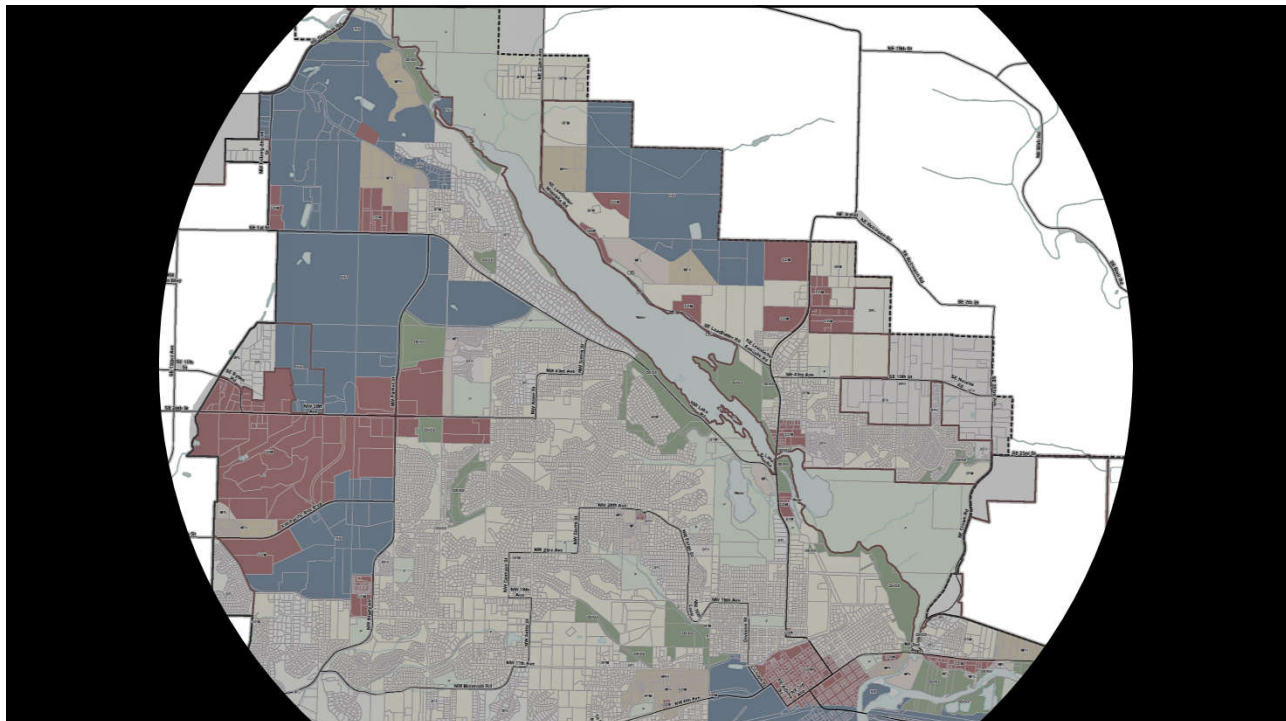
## Light Industrial/Business Park Zone

<b>Camas Meadows Dr.</b> Plexsys Lightfeet Reality Oregon Ice Cream Logitech	<b>NW Lake Road</b> Safe Fire Almar Tools Wafer Tech Samson Sports	<b>NW Pacific Rim Dr.</b> Kärcher Furuno (West-Adjacent) Holland Shopping Center
---------------------------------------------------------------------------------------------	--------------------------------------------------------------------------------	-------------------------------------------------------------------------------------------

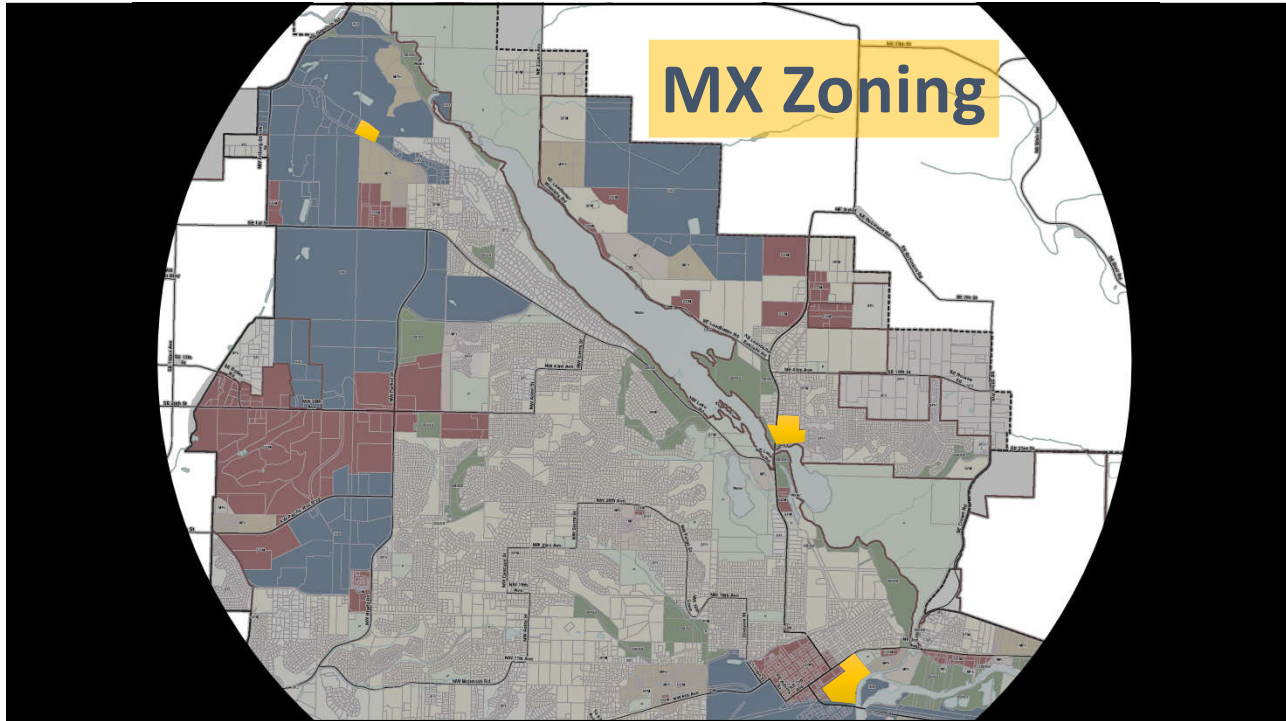
8



9




10

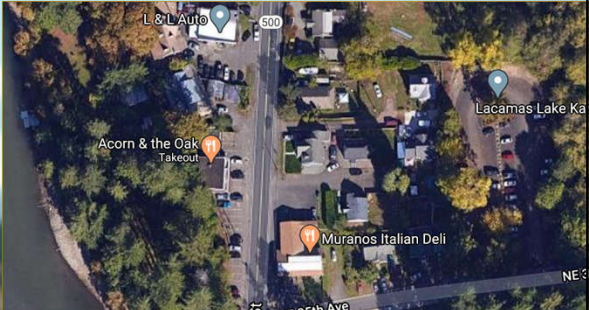


11

## Mixed Use Zone

12





**2<sup>nd</sup> Avenue**

- South of Safeway
- Chiropractic clinics
- Opus Music
- School District (Life skills home)

**Everett Street**

- Acorn & the Oak
- Murano's Deli
- L&L Auto
- Kayak Rentals

12

# Evaluation Criteria

Impact upon

- Comprehensive Plan or zoning code?
- Surrounding properties?
- Code & other adopted documents?
- Alternatives to the proposal?

13

14

Vanport  
#CPA21-01

**Size:** 4.8 acres  
**Current:** LI/BP - Industrial  
**Proposed:** MX - Commercial  
**Current Use:** Vacant  
**Adjacent Use:** Golf Course

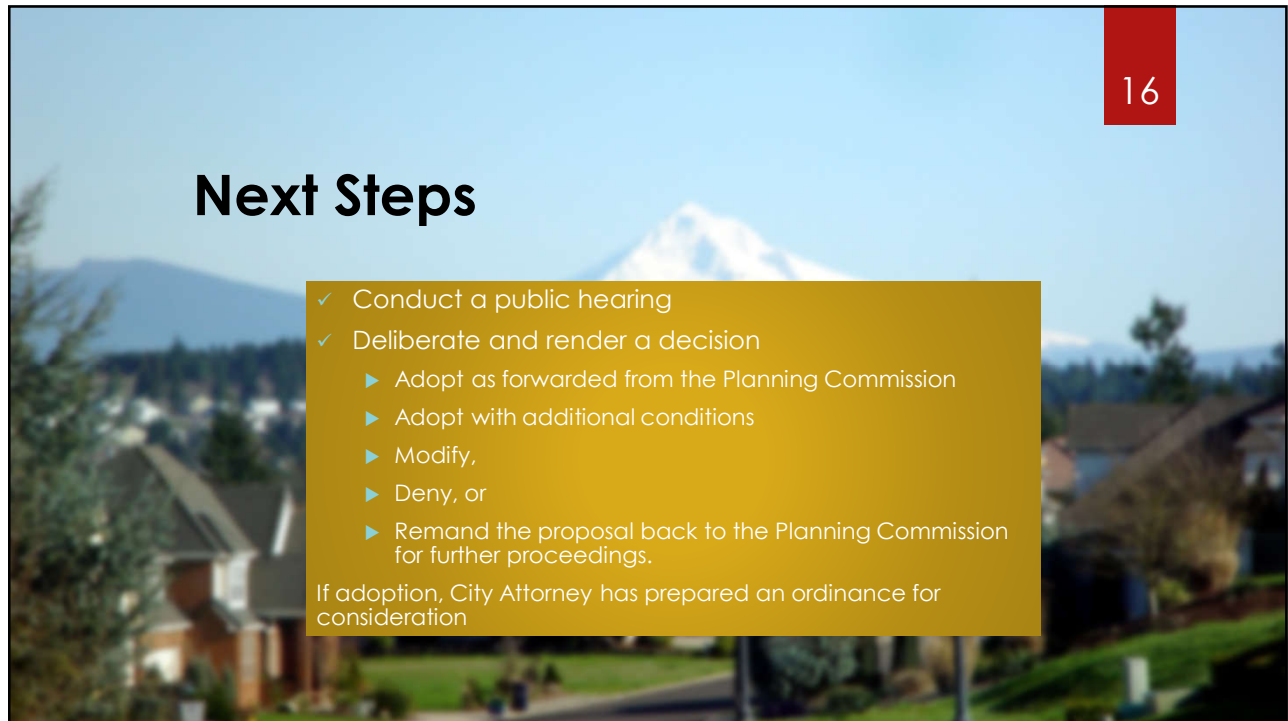
14



Vanport  
#CPA21-01

**Size:** 4.8 acres  
**Current:** LI/BP - Industrial  
**Proposed:** MX - Commercial  
**Current Use:** Vacant  
**Adjacent Use:** Golf Course

15



## Next Steps

- ✓ Conduct a public hearing
- ✓ Deliberate and render a decision
  - ▶ Adopt as forwarded from the Planning Commission
  - ▶ Adopt with additional conditions
  - ▶ Modify,
  - ▶ Deny, or
  - ▶ Remand the proposal back to the Planning Commission for further proceedings.

If adoption, City Attorney has prepared an ordinance for consideration

16