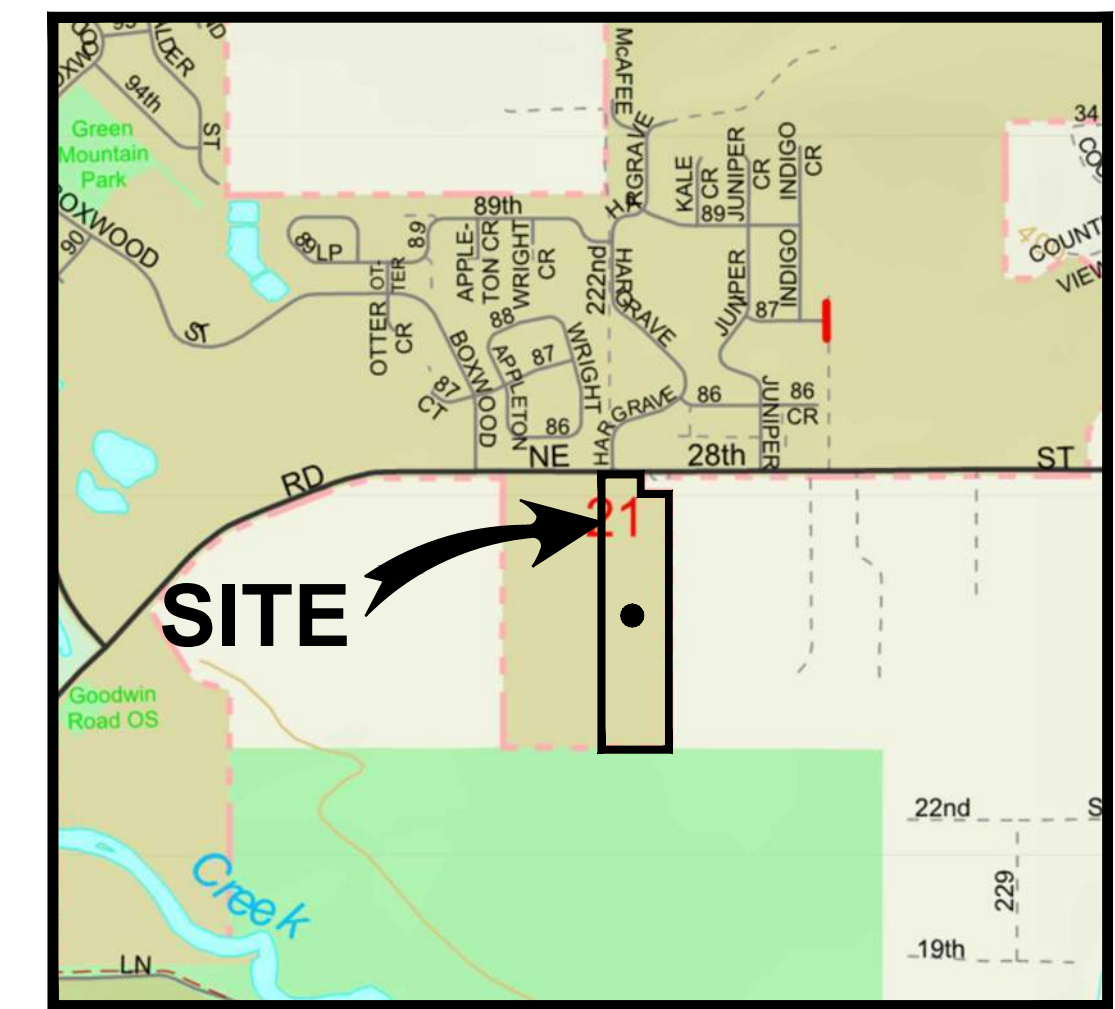


# Monte Verde

Located in the SE 1/4 of Section 21, T2N, R3E and in the SW 1/4 of Section 21, T2N, R3E, W.M. Camas, Washington

### Sheet Index

1. #####
2. Preliminary Plat - South
3. Preliminary Plat - North
4. Preliminary Utility Plan - South
5. Preliminary Utility Plan - North
6. Preliminary Grading Plan - South
7. Preliminary Grading Plan - North
8. Landscape Plan
9. Tree Plan



VICINITY MAP  
NOT TO SCALE

### GENERAL NOTES

**Applicant:**  
Pacific Lifestyle Homes  
Ryan Stygar  
11815 NE 99th Street  
Vancouver, WA 98682  
Office (360) 304-9901

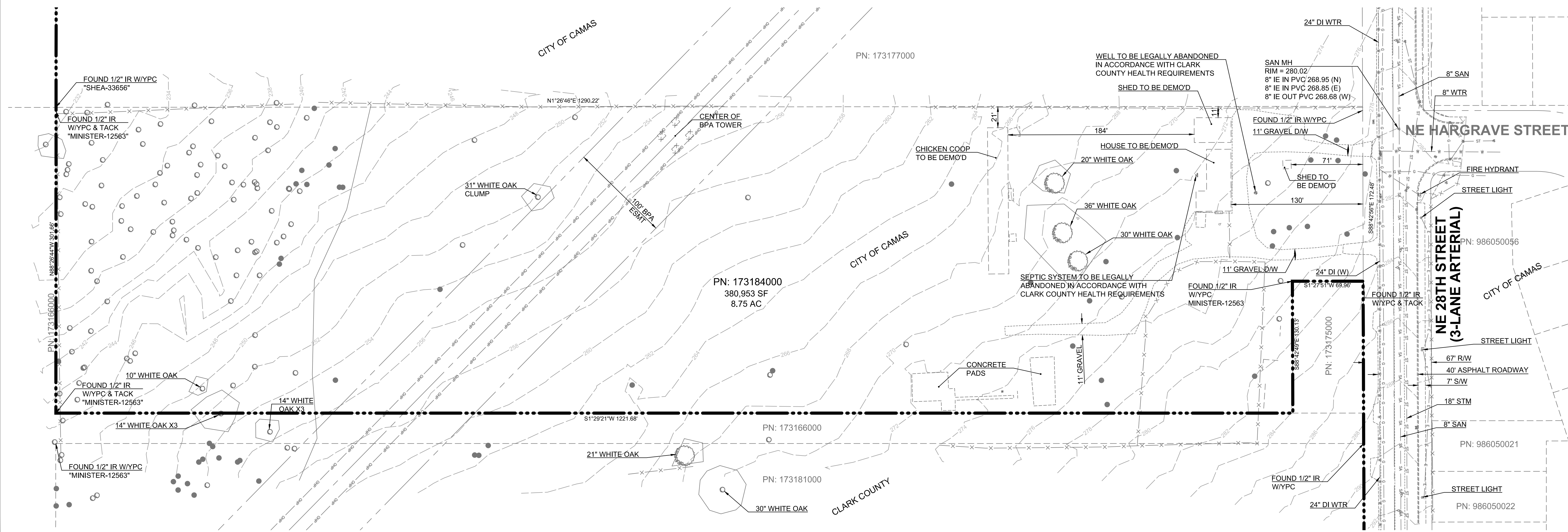
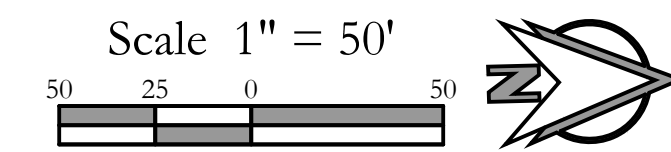
**OWNER:**  
Dwight Southern  
22205 NE 28th Street  
Camas, WA 98607

**CIVIL ENGINEER:**  
PLS Engineering  
Contact: Travis Johnson, PE  
604 W Evergreen Blvd  
Vancouver, WA 98660  
PH: (360) 944-6519  
pm@plsengineering.com

**SITE ADDRESS:**  
Parcel # 173184-000  
22205 NE 28th Street  
Camas, WA 98607

**HORIZONTAL DATUM:**  
NAD 83 (2011)  
Oregon State plane coordinate system, North zone,  
International feet based on real time kinematic corrections  
from the Washington State reference network.

**VERTICAL DATUM:**  
NGVD29(47) Clark County Datum



Existing Conditions Plan For:  
**Monte Verde**  
 A Subdivision Located In The City Of Camas, Washington  
 Engineering - Surveying - Planning 604 W. Evergreen Blvd., Vancouver, WA 98660 PH (360) 944-6519 Fax (360) 944-6539

Revisions	1	2	3	4	5	6



Project No. 3382  
 SCALE: H: 1" = 50'  
 V: N/A  
 DESIGNED BY: SWG  
 DRAFTED BY: JSV  
 REVIEWED BY: SWG

