

HORIZONTAL DATUM:
NAD 83(2011) (EPOCH 2010.0000), WASHINGTON STATE PLANE COORDINATE SYSTEM,
SOUTH ZONE, US SURVEY FEET.

VERTICAL DATUM:
CITY OF CAMAS

STATEMENT OF PURPOSE:
THIS EXISTING CONDITIONS SURVEY IS INTENDED TO FULFILL THE CLARK COUNTY
REQUIREMENT FOR A PRELIMINARY BOUNDARY SURVEY OF THE SUBJECT PARCEL,
PER ITEM 21 OF THE CLARK COUNTY "TYPE II, II-A AND III SUBMITTAL
REQUIREMENTS" HANDOUT.

LEGEND:

- INDICATES WATER VALVE
- INDICATES FIRE HYDRANT
- INDICATES WATER METER
- INDICATES CONTROL VALVE
- INDICATES WATER VAULT
- INDICATES WATER MANHOLE
- INDICATES TELEPHONE MARKER
- INDICATES STORM SEWER MANHOLE
- INDICATES STORM CLEANOUT
- INDICATES DITCH INLET

- INDICATES CURB INLET
- INDICATES CATCH BASIN
- INDICATES SANITARY SEWER MANHOLE
- INDICATES SEPTIC SYSTEM LID
- INDICATES POWER POLE
- INDICATES GUY ANCHOR
- INDICATES ELECTRIC SERVICE BOX
- INDICATES GAS VALVE
- INDICATES GAS MARKER
- INDICATES SIGN
- INDICATES MAIL BOX

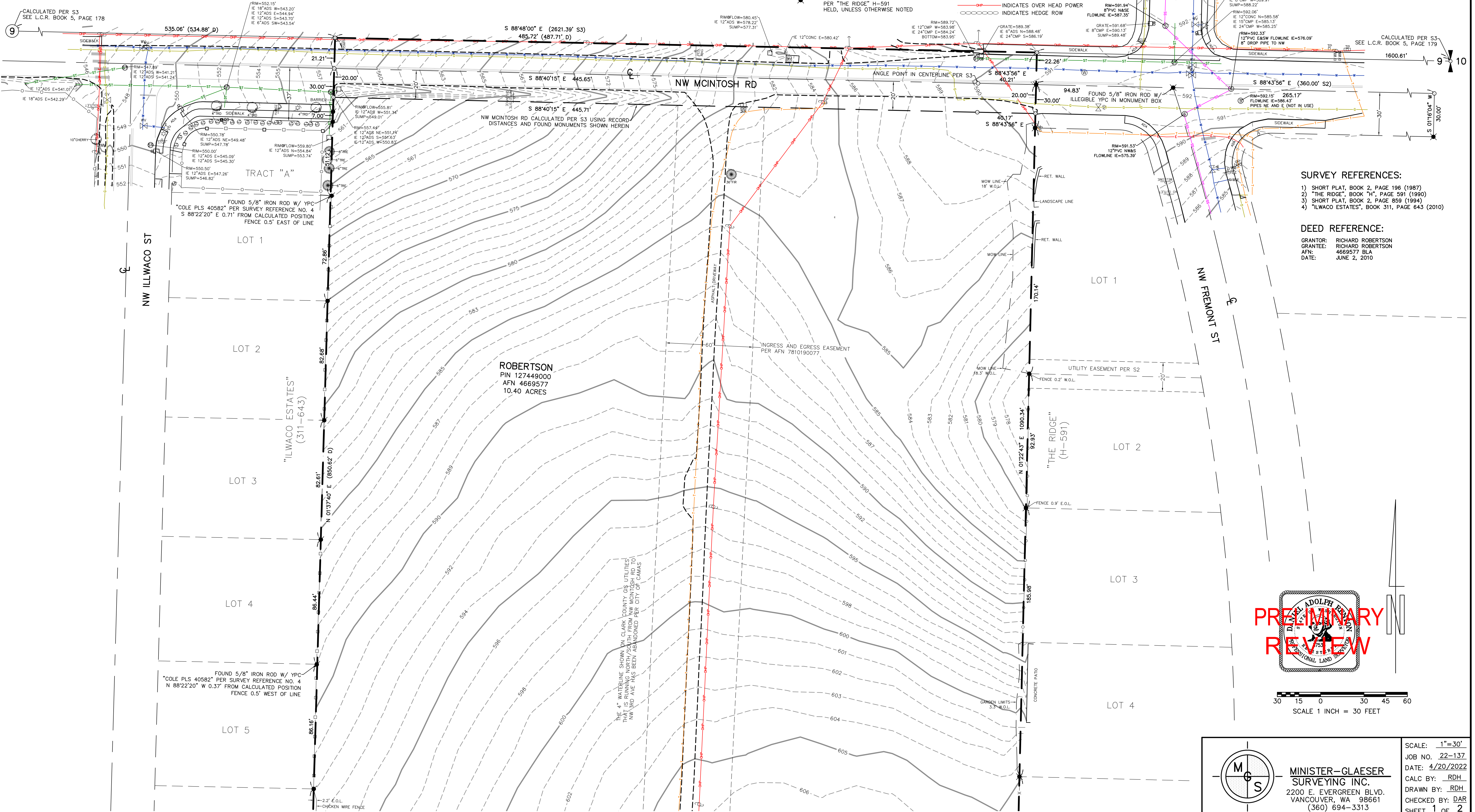
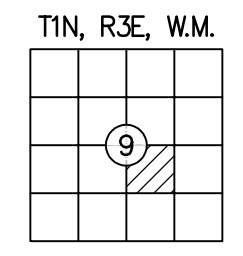
- INDICATES SHRUB
- INDICATES EVERGREEN TREE WITH TRUNK DIAMETER AND TYPE
- INDICATES DECIDUOUS TREE WITH TRUNK DIAMETER AND TYPE
- INDICATES RECORD DATA PER SURVEY REFERENCE NUMBER
- INDICATES RECORD DATA PER DEED REFERENCE
- INDICATES AUDITOR'S FILE NUMBER
- INDICATES PARCEL IDENTIFICATION NUMBER
- INDICATES EAST OF LINE
- INDICATES WEST OF LINE
- INDICATES LAND CORNER RECORD

- INDICATES ADA RAMP
- INDICATES ASPHALT
- INDICATES CONCRETE
- INDICATES GRAVEL
- INDICATES UNIDENTIFIED EVERGREEN TREE
- INDICATES UNIDENTIFIED DECIDUOUS TREE
- INDICATES MONUMENT FOUND AS NOTED
- INDICATES CALCULATED POSITION
- INDICATES FOUND 5/8" IRON ROD W/ YPC "COLE PLS 40582" HELD, UNLESS OTHERWISE NOTED
- INDICATES FOUND 5/8" IRON ROD W/ YPC "PEAPLS 13935" HELD, UNLESS OTHERWISE NOTED

- INDICATES BOUNDARY
- INDICATES EDGE OF ASPHALT
- INDICATES EDGE OF CONCRETE
- INDICATES EDGE OF GRAVEL
- INDICATES 5 FOOT INTERVAL CONTOUR
- INDICATES 1 FOOT INTERVAL CONTOUR
- INDICATES FENCE LINE
- INDICATES CHAINLINK FENCE LINE
- INDICATES WOOD FENCE LINE
- INDICATES PAINT STRIPE
- INDICATES ELECTRIC LOCATE
- INDICATES GAS LOCATE
- INDICATES SANITARY LOCATE
- INDICATES STORM LOCATE
- INDICATES TELEVISION LOCATE
- INDICATES WATER LOCATE
- INDICATES OVER HEAD POWER
- INDICATES HEDGE ROW

EXISTING CONDITIONS SURVEY

LOCATED IN A PORTION OF
THE NW 1/4 OF THE SE 1/4
OF SECTION 9
T. 1 N., R. 3 E., W.M.
CITY OF CAMAS
CLARK COUNTY, WASHINGTON



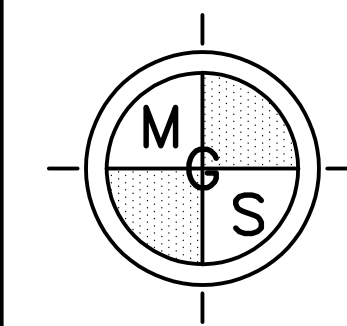
- SURVEY REFERENCES:
- 1) SHORT PLAT, BOOK 2, PAGE 196 (1987)
 - 2) "THE RIDGE", BOOK "H", PAGE 591 (1990)
 - 3) SHORT PLAT, BOOK 2, PAGE 859 (1994)
 - 4) "ILLWACO ESTATES", BOOK 311, PAGE 643 (2010)

DEED REFERENCE:

GRANTOR: RICHARD ROBERTSON
GRANTEE: RICHARD ROBERTSON
AFN: 4669577 BLA
DATE: JUNE 2, 2010



SCALE 1 INCH = 30 FEET

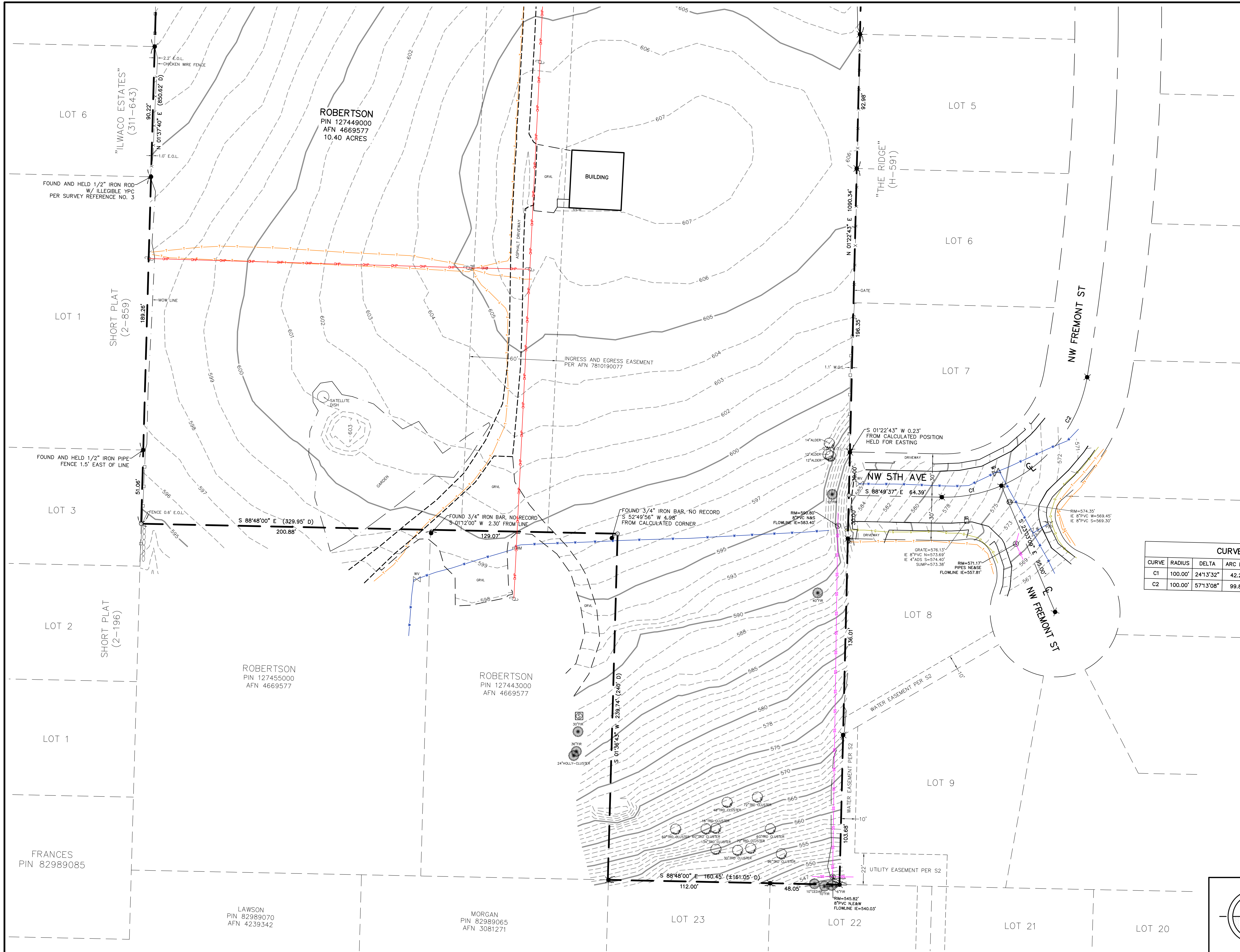


MINISTER-GLAESER
SURVEYING INC.
2200 E. EVERGREEN BLVD.
VANCOUVER, WA 98661
(360) 694-3313

SCALE: 1"=30'
JOB NO. 22-137
DATE: 4/20/2022
CALC BY: RDH
DRAWN BY: RDH
CHECKED BY: DAR
SHEET 1 OF 2

EXISTING CONDITIONS SURVEY

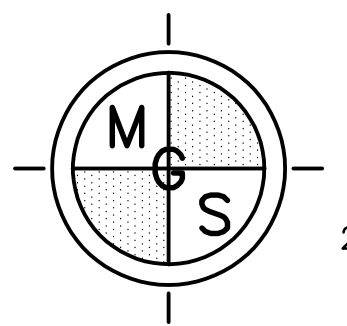
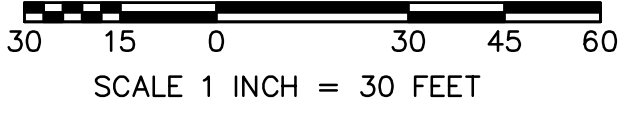
LOCATED IN A PORTION OF THE NW 1/4 OF THE SE 1/4 OF SECTION 9 T. 1 N., R. 3 E., W.M. CITY OF CAMAS CLARK COUNTY, WASHINGTON



CURVE TABLE					
CURVE	RADIUS	DELTA	ARC DIST.	CHORD BEARING	CHORD DIST.
C1	100.00'	241°3'32"	42.28'	N 79°03'37" E	41.97'
C2	100.00'	57°13'08"	99.87'	N 38°20'17" E	95.77'



PRELIMINARY REVIEW



MINISTER-GLAESER SURVEYING INC.
 2200 E. EVERGREEN BLVD.
 VANCOUVER, WA 98661
 (360) 694-3313

SCALE: 1"=30'
 JOB NO. 22-137
 DATE: 4/20/2022
 CALC BY: RDH
 DRAWN BY: RDH
 CHECKED BY: DAR
 SHEET 2 OF 2