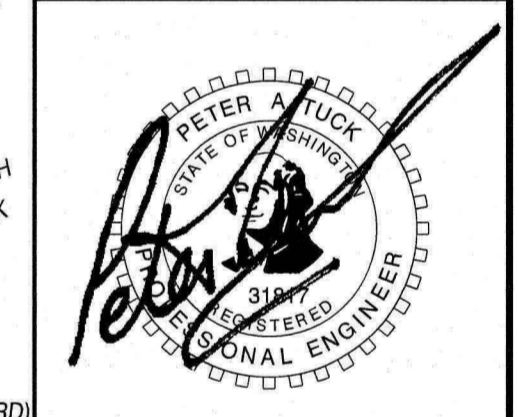


CLIENT:
 TERRELL & ASSOCIATES, LLC ET AL
 17933 NW EVERGREEN PARKWAY,
 SUITE 300
 BEAVERTON, OR 97006
 ATTN: JOHN SCHMIDT
 PH: (503) 597-7100
 FAX: (503) 597-7149
 EMAIL: john.schmidt@metlandgroup.com

STREET PLAN FOR:
**GREEN MOUNTAIN MIXED URBAN VILLAGE
 TRACT "A" (STAGE 1)**

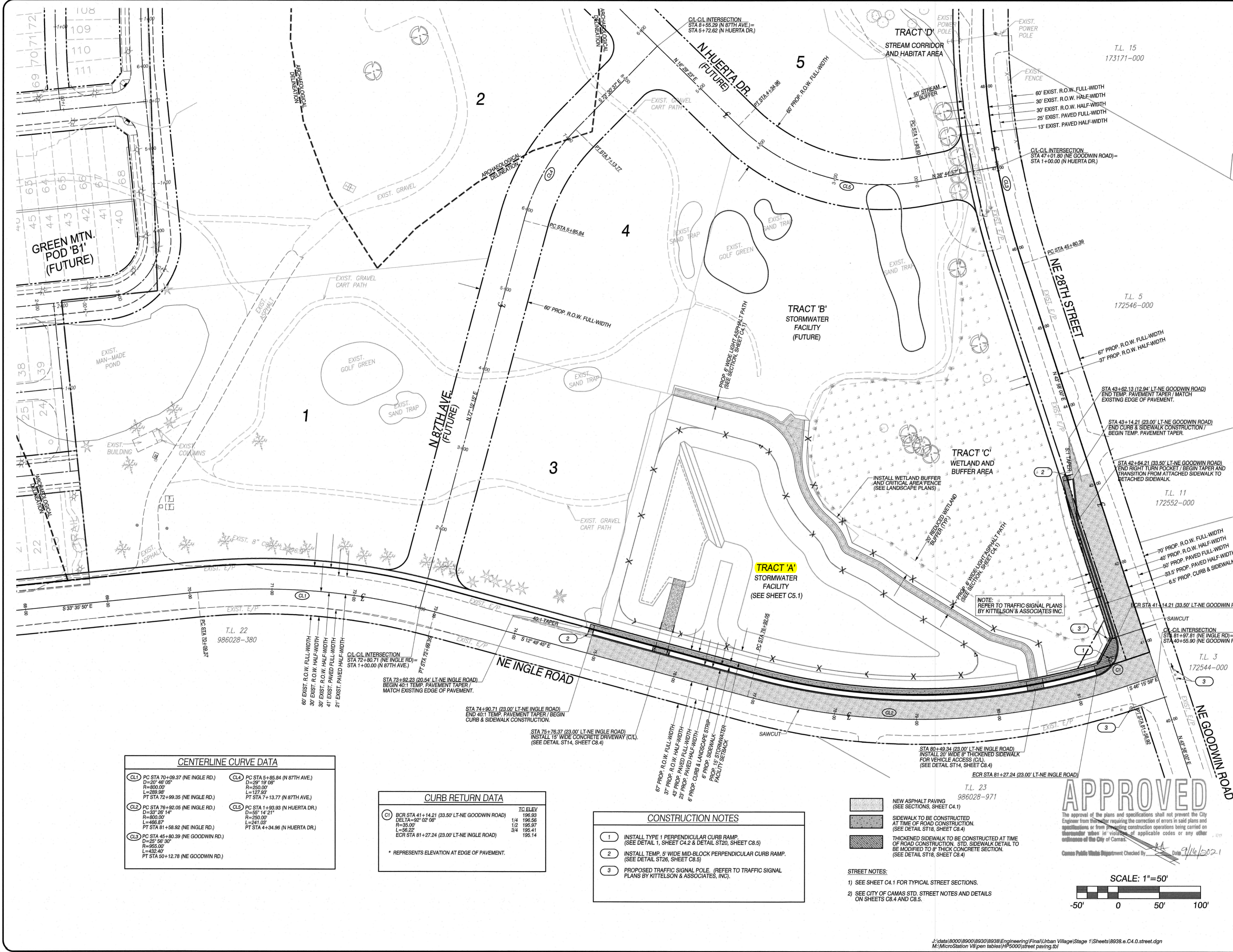
LAND SURVEYORS
OLSON ENGINEERS
 ENGINEERING INC.
 222 E. EVERGREEN, WACOUVER, WA 98690
 360-895-1385
 503-259-9599
 15 Years



08/23/2021

CHANGES / REVISIONS	
DESCRIPTION:	DATE:

DESIGNED: RWP
 DRAWN: RWP
 CHECKED: PAT
 DATE: JUNE 2021
 SCALE: H: 1"=50'
 V: N/A
 GREEN MOUNTAIN MIXED URBAN VILLAGE
 TRACT "A" (STAGE 1)
 JOB NO.: 8938.01.06
SHEET
C4.0



CENTERLINE CURVE DATA

CL1 PC STA 70+09.37 (NE INGLE RD.) D=20' 40" 06" R=800.00' L=289.98' PT STA 72+09.35 (NE INGLE RD.)	CL4 PC STA 5+85.84 (N 87TH AVE.) D=29' 19" 08" R=250.00' L=127.93' PT STA 7+13.77 (N 87TH AVE.)
CL2 PC STA 76+92.05 (NE INGLE RD.) D=33' 29" 14" R=800.00' L=496.37' PT STA 81+58.92 (NE INGLE RD.)	CL5 PC STA 1+93.93 (N HUERTA DR.) D=45' 14" 21" R=250.00' L=241.03' PT STA 4+34.96 (N HUERTA DR.)
CL3 PC STA 45+80.39 (NE GOODWIN RD.) D=25' 56" 30" R=855.00' L=432.40' PT STA 50+12.78 (NE GOODWIN RD.)	

CURB RETURN DATA

CR	BCR STA	IC ELEV
C1	STA 41+14.21 (33.50' LT-NE GOODWIN ROAD)	196.93
	DELTA=92' 02" 08"	1/4 195.56
	R=35.00'	1/2 195.97
	L=96.22'	3/4 195.41
	ECR STA 81+27.24 (23.00' LT-NE INGLE ROAD)	195.14

* REPRESENTS ELEVATION AT EDGE OF PAVEMENT.

- CONSTRUCTION NOTES**
- INSTALL TYPE 1 PERPENDICULAR CURB RAMP. (SEE DETAIL 1, SHEET C4.2 & DETAIL ST20, SHEET C8.5)
 - INSTALL TEMP. 5' WIDE MID-BLOCK PERPENDICULAR CURB RAMP. (SEE DETAIL ST26, SHEET C8.5)
 - PROPOSED TRAFFIC SIGNAL POLE. (REFER TO TRAFFIC SIGNAL PLANS BY KITTELSON & ASSOCIATES, INC.)

- STREET NOTES:**
- SEE SHEET C4.1 FOR TYPICAL STREET SECTIONS.
 - SEE CITY OF CAMAS STD. STREET NOTES AND DETAILS ON SHEETS C8.4 AND C8.5.

APPROVED

The approval of the plans and specifications shall not prevent the City Engineer from thereafter requiring the correction of errors in said plans and specifications or from suspending construction operations being carried on thereunder when in violation of applicable codes or any other ordinance of the City of Camas.

Camas Public Works Department Checked by: *[Signature]* Date: 9/16/2021

SCALE: 1"=50'

J:\data\8000\8900\8930\8938\Engineering\Final\Urban Village\Stage 1\Sheets\8938.a.C4.0.street.dgn
 M:\MicroStation V8\pen tables\HP5000\street paving.tbl