

CONCRETE WALL PANEL
WITH HORIZONTAL AND
VERTICAL REVEALS,
PAINTED

CAMAS BUSINESS PARK (LI/BP 21-01)

Consolidated files (BLA21-09, SPRV21-06, DR21-07, SEPA21-12, CA21-02, ARCH21-05)

City Council meeting June 6, 2022
Lauren Hollenbeck, Senior Planner

Process



Apr. 14, 2022

Design Review meeting



Apr. 28, 2022

SEPA DNS issued



May 17, 2022

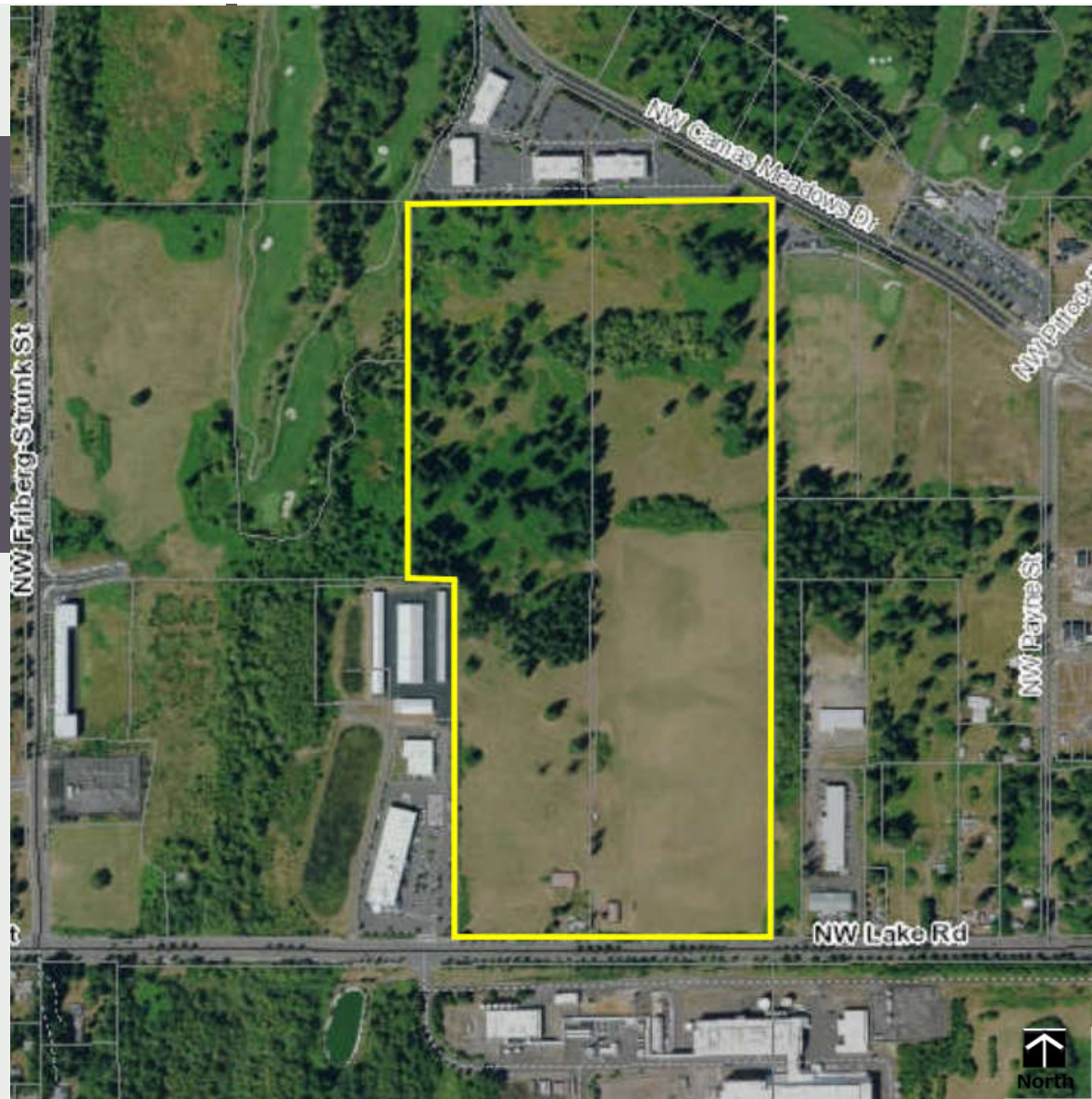
Planning Commission Public
Hearing



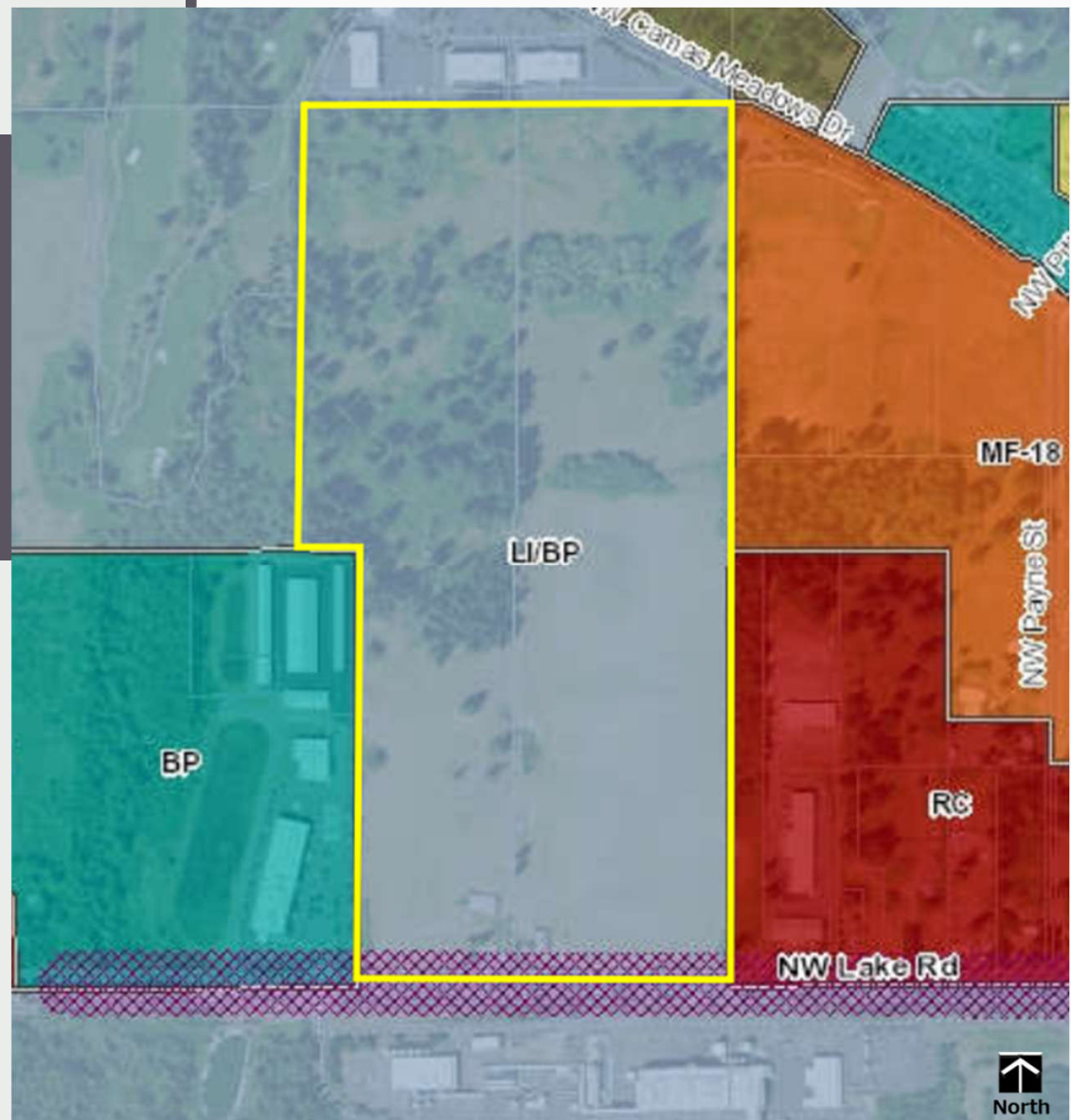
June 6, 2022

City Council closed record
meeting

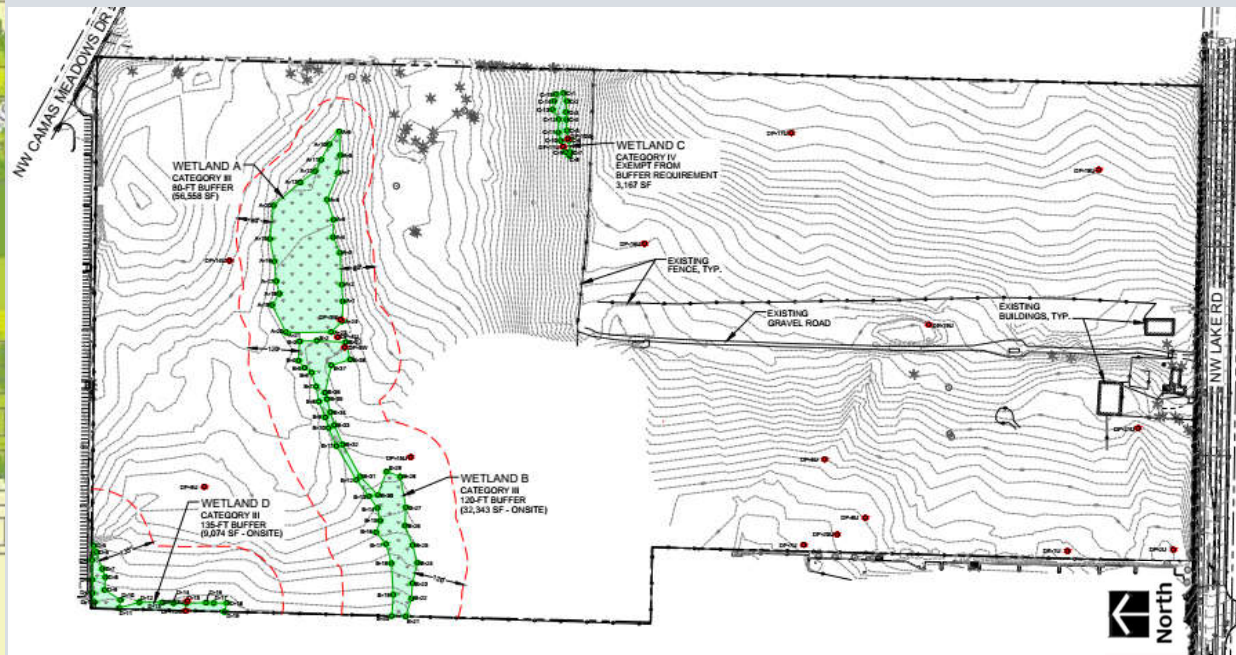
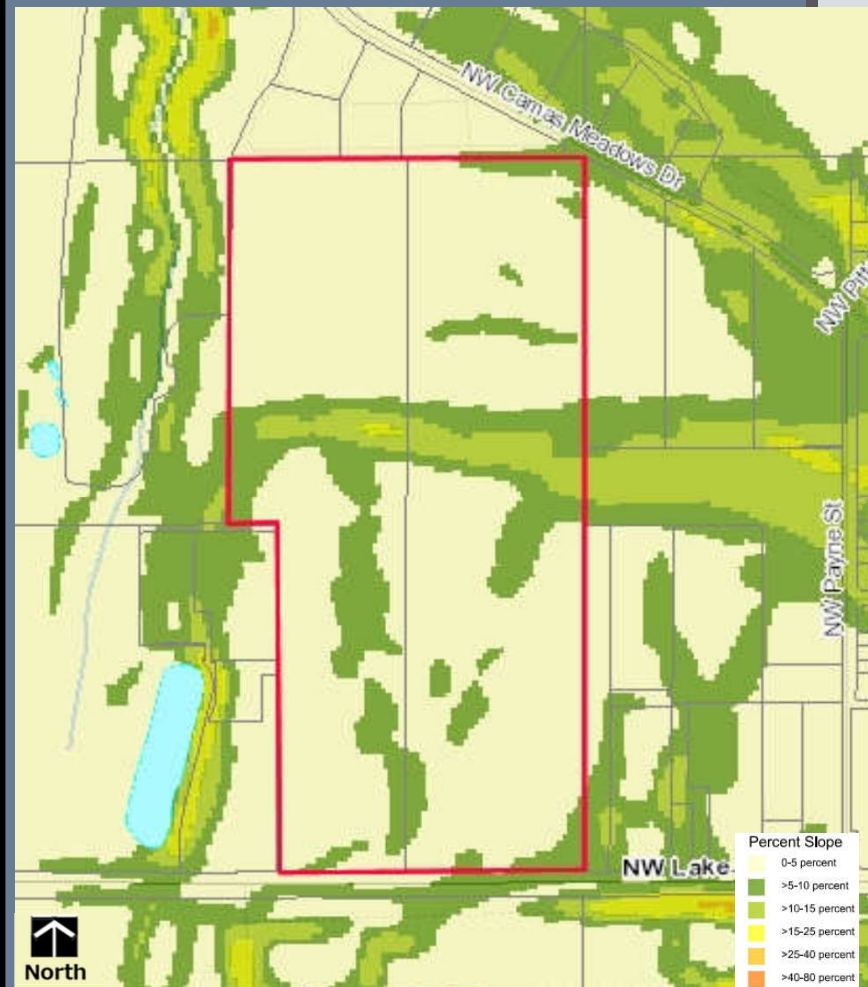
VICINITY MAP



ZONING MAP

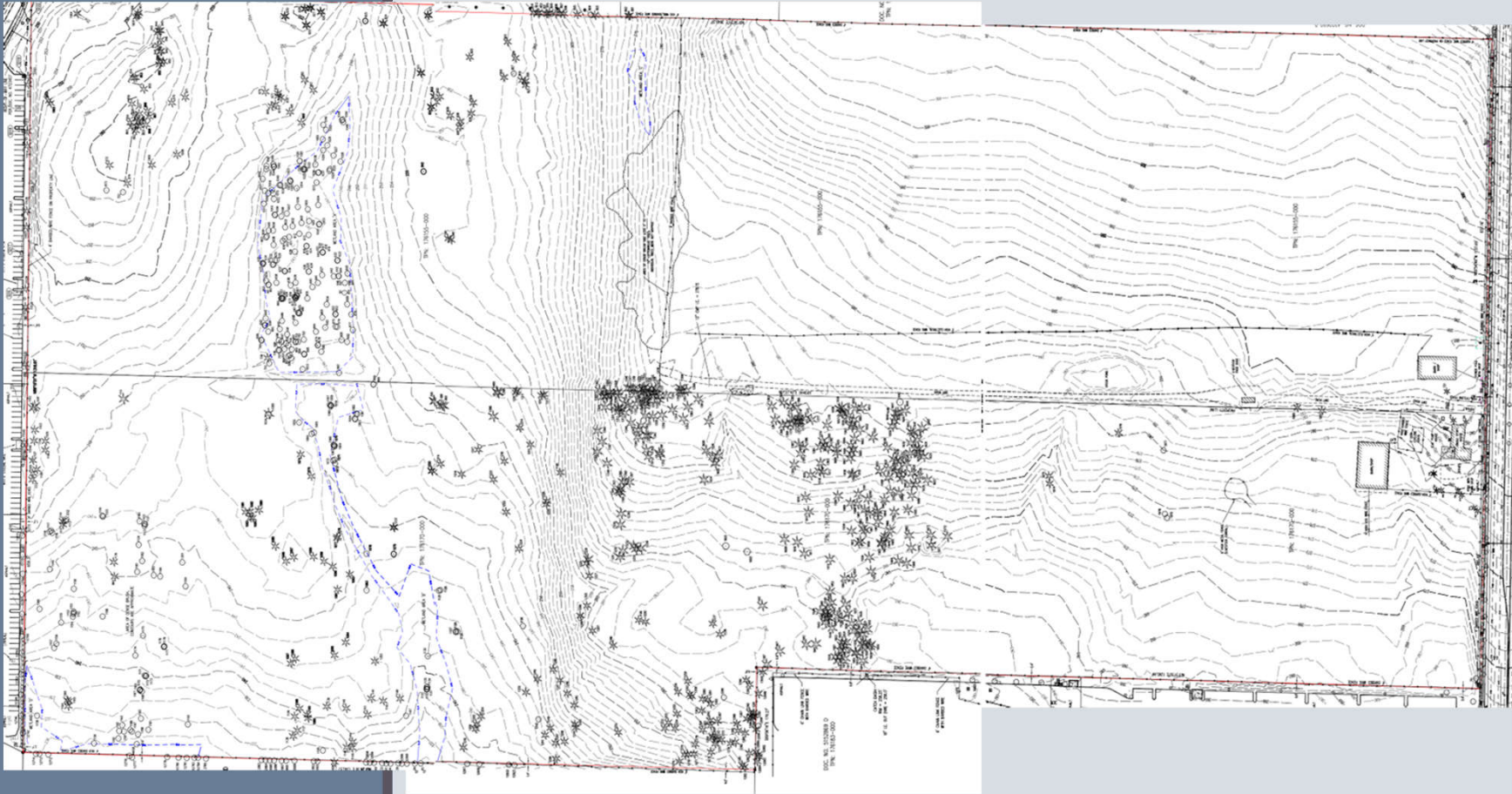


CRITICAL AREAS



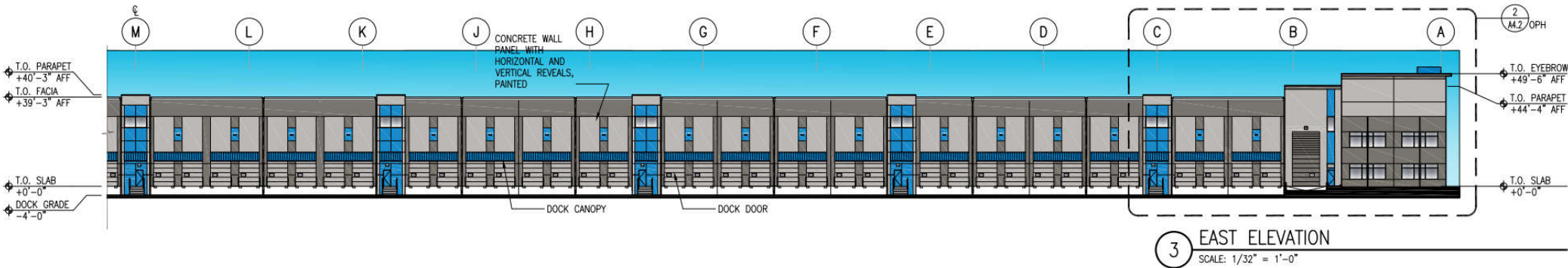
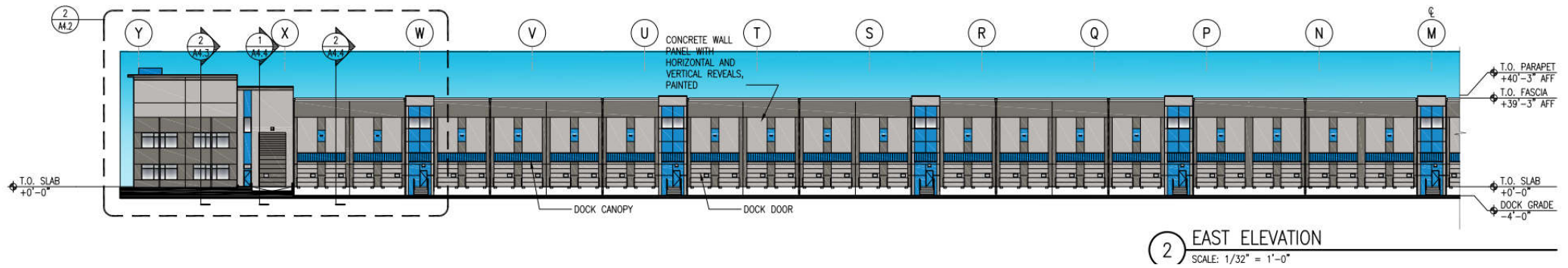
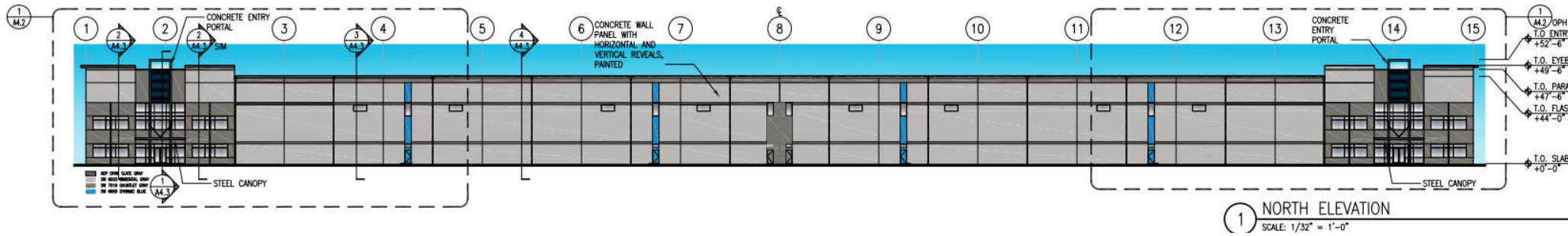
TREE PRESERVATION AND REMOVAL

- 20 tree units per net acre required = 1,434 Tree Units
- 1,313 Tree Units provided
 - ❖ 476 TUs preserved
 - ❖ 837 TUs proposed
- Additional 121 Tree Units required

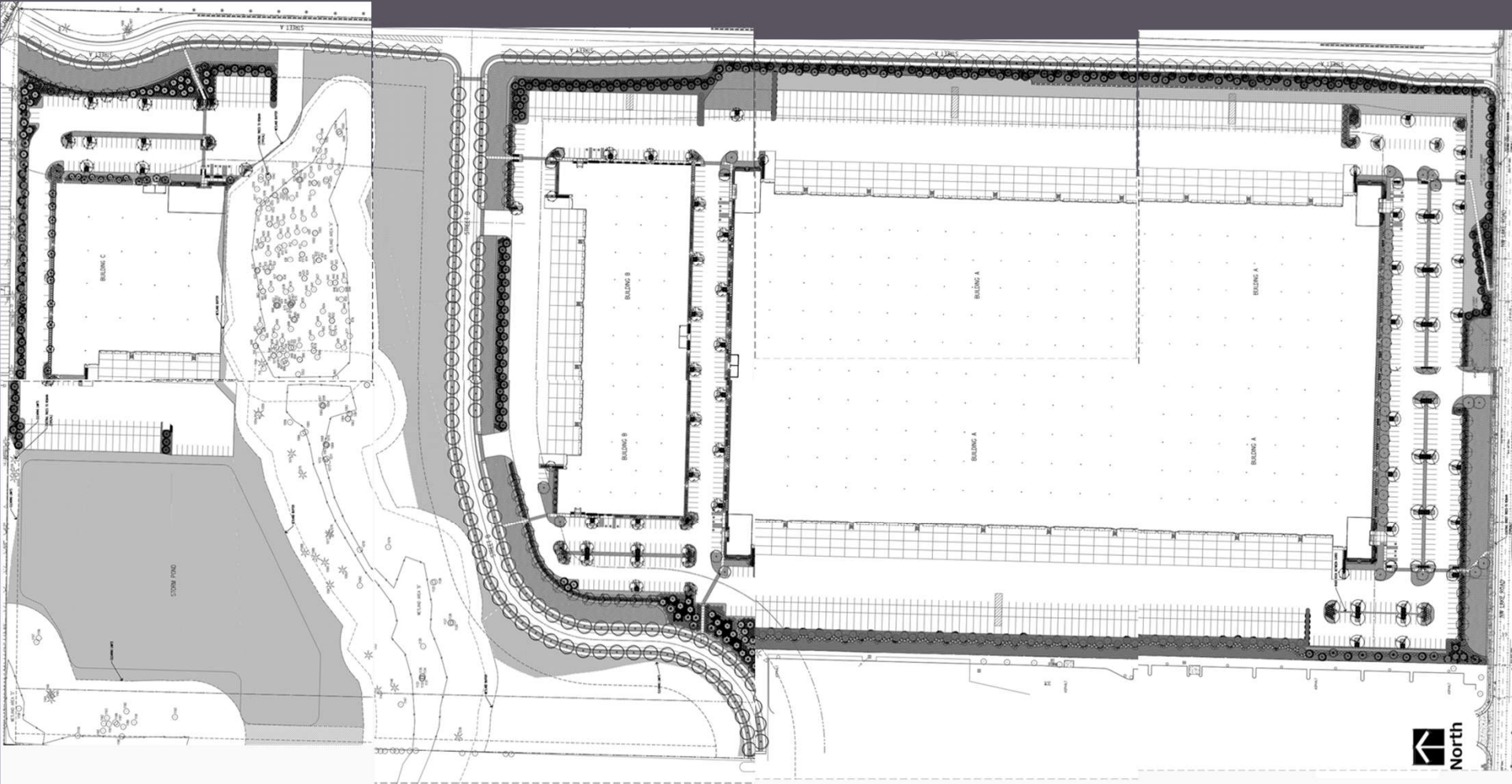


North

BUILDING A ELEVATIONS



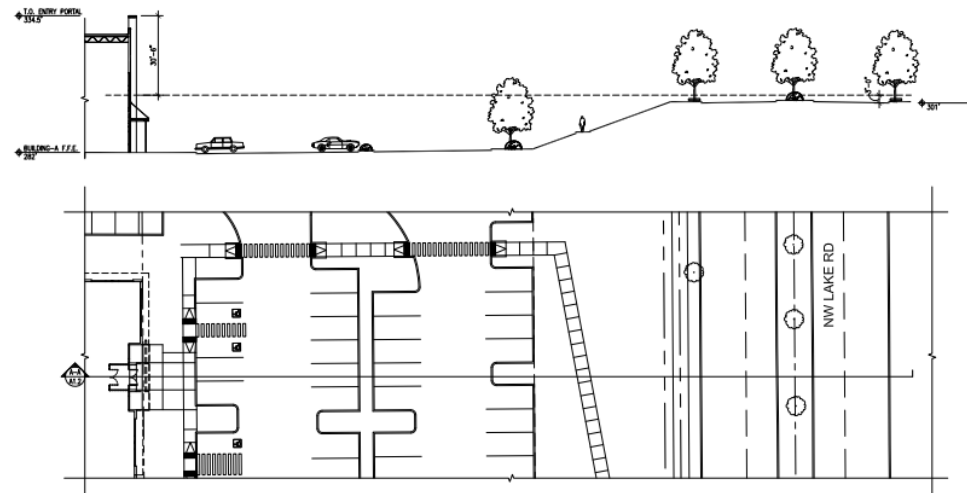
LANDSCAPE PLAN



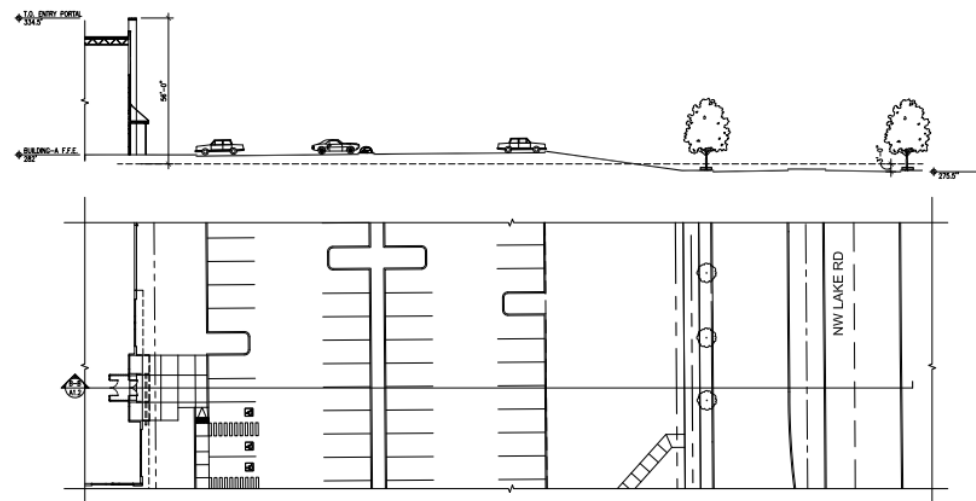
LAKE ROAD CROSS- SECTIONS

Massing & Setbacks

- Massing and setbacks are major elements of a site plan. These elements have the greatest impact as to how the proposed development relates to the surrounding area and how individuals living and visiting the area interact with the development. Major components that define the character and quality of the proposed development include the size, scale, and placement of buildings, lot coverage, and traffic/pedestrian circulation.



1 SE SITE SECTION A-A
SCALE: 1" = 30'



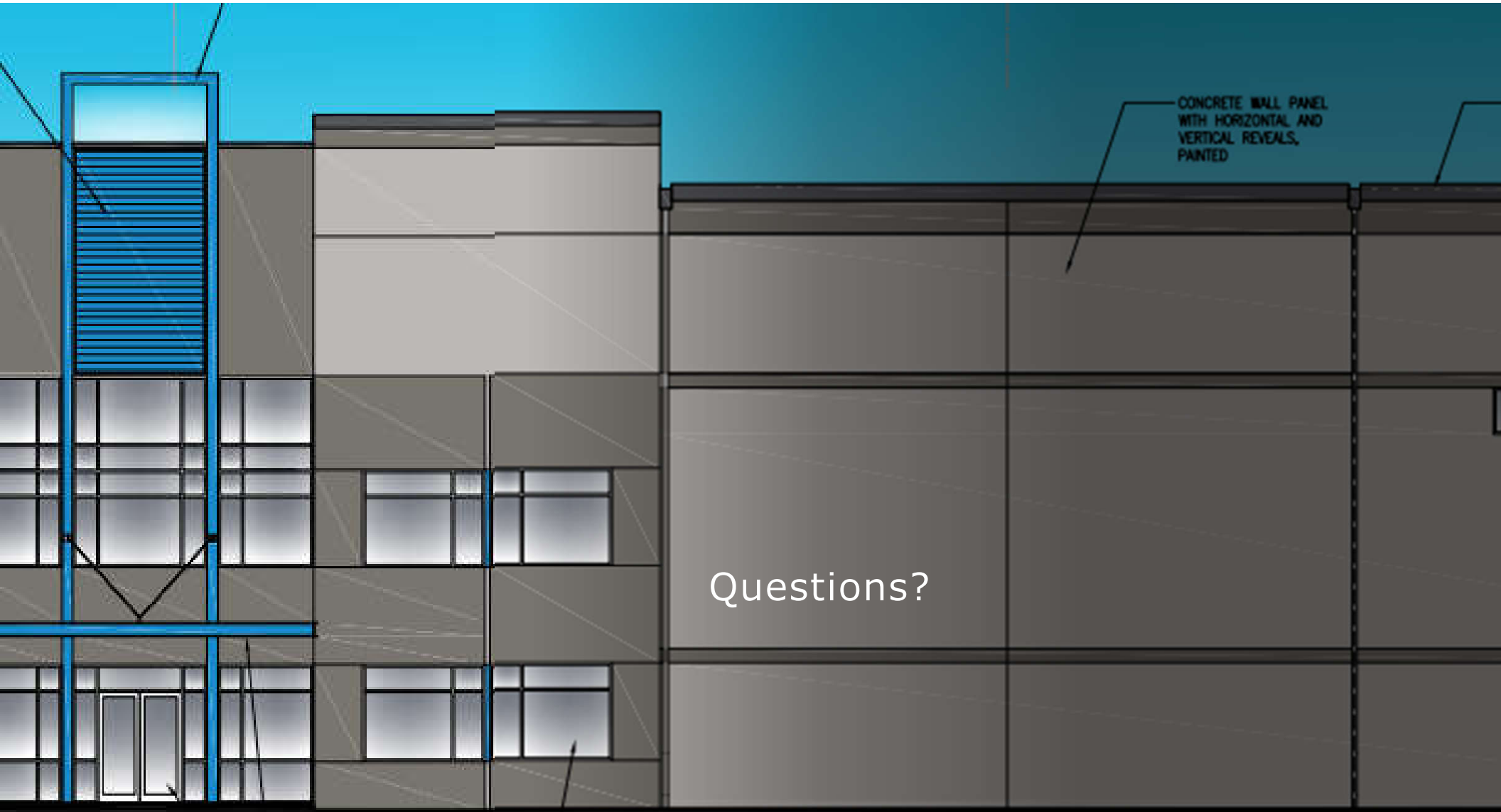
2 SW SITE SECTION B-B
SCALE: 1" = 30'



← Looking West on NW Lake Road



Looking East on NW Lake Road →



CONCRETE WALL PANEL
WITH HORIZONTAL AND
VERTICAL REVEALS,
PAINTED

Questions?