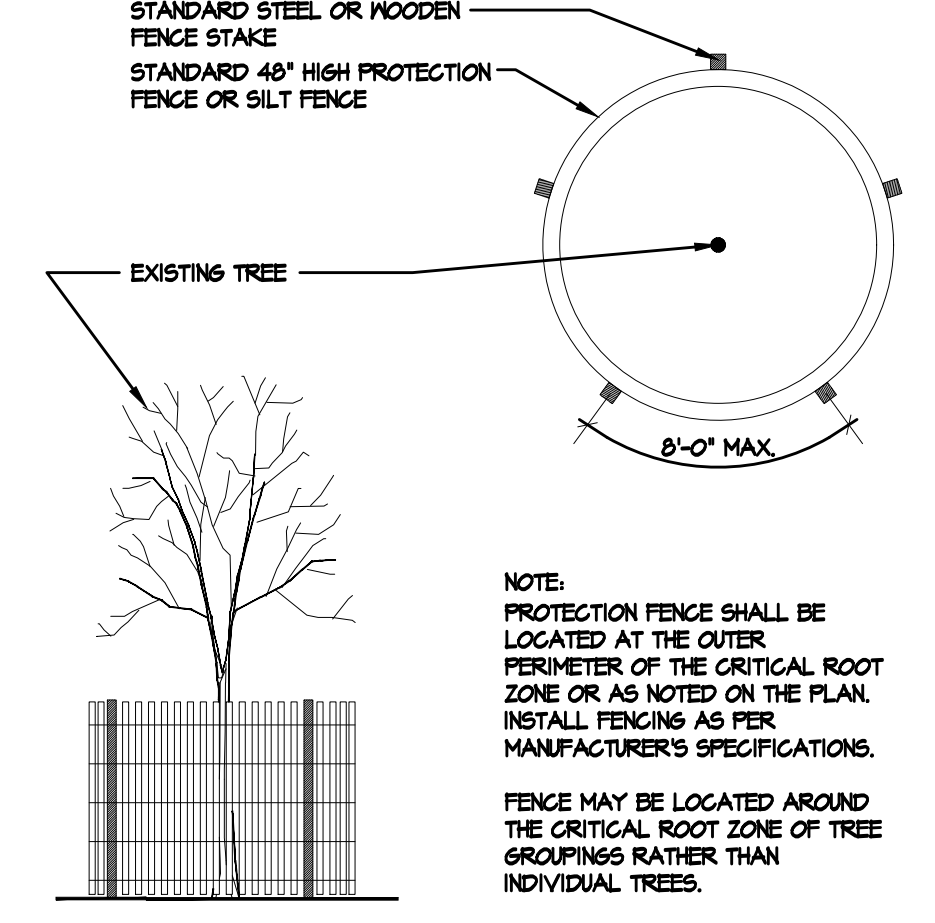
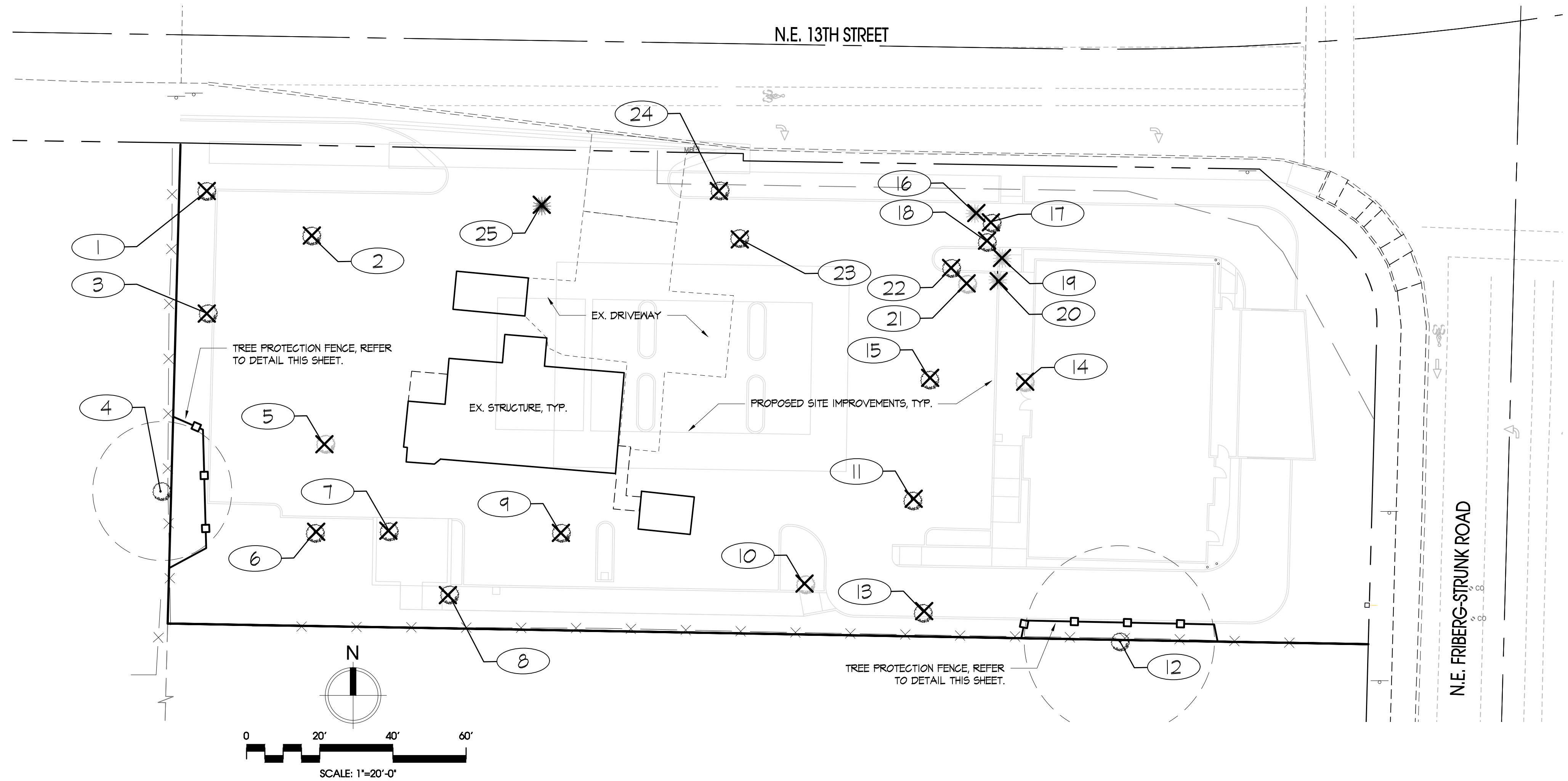
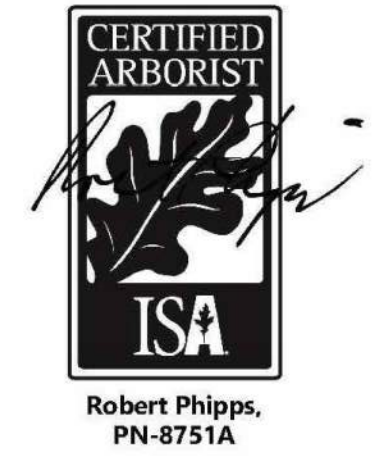


SITE STATISTICS	
93± AC	SITE AREA
19	TREE UNITS REQUIRED (20 / ACRE)
0	TREE UNITS RETAINED

SYMBOL LEGEND	
SYMBOL	DESCRIPTION
	EXISTING SIGNIFICANT DECIDUOUS TREE (12" CAL. OR GREATER)
	EXISTING SIGNIFICANT EVERGREEN TREE (8" CAL. OR GREATER)
	EXISTING DECIDUOUS (LESS THAN 12" CAL.)
	EXISTING EVERGREEN TREE (LESS THAN 8" CAL.)
	EXISTING SIGNIFICANT TREES TO BE REMOVED
	ROOT PROTECTION ZONE AREA (RPZ)
	TREE PROTECTION FENCE LOCATION (4' CHAIN LINK, ORANGE PVC FENCE OR SILT FENCE) (ALSO DENOTES AREA WHERE NO IMPACTS TO THE ROOT PROTECTION ZONE SHALL OCCUR). SEE DETAIL THIS SHEET.



**A Tree Protection Fencing Detail**  
 Not To Scale SECTION / PLAN VIEW

**TREE PROTECTION TIME LINE & NARRATIVE**

EXISTING ON-SITE AND OFF-SITE TREE LOCATIONS AND SIZES HAVE BEEN OBTAINED VIA SURVEY INFORMATION AND SITE OBSERVATIONS.

NO EXISTING TREES WITHIN THE PROJECT BOUNDARIES ARE PROPOSED TO BE RETAINED.

TREE PROTECTION FENCING SHALL BE PLACED AS SHOWN TO PROTECT THE OFF-SITE TREE NEAR THE S.E. CORNER OF THE SITE.

TREE PROTECTION / EROSION CONTROL FENCING SHALL BE ESTABLISHED PRIOR TO EXCAVATION. IT IS RECOMMENDED TO BE INSTALLED AT THE SAME TIME EROSION CONTROL MEASURES ARE INSTALLED. WHERE TREE FENCE AND EROSION CONTROL FENCE ARE LOCATED AT THE SAME LOCATION, EROSION FENCE THEN SERVES AS TREE PROTECTION FENCE. SEE DETAIL THIS SHEET.

TREES DETERMINED TO BE A SAFETY HAZARD AT THE TIME OF CONSTRUCTION MAY BE REMOVED. THE SITE WILL MAINTAIN A MINIMUM TREE UNIT COUNT OF 20 TREES PER ACRE IN ACCORDANCE WITH CITY OF CAMAS MUNICIPAL CODE CC 10.13.051.

Tree Data					
Tree No.	Species	DBH	RPZ	Tree Condition	Condition Notes
1	Prunus spp. (Plum)	12"	12'	poor	Diseases or Conks, Visible Decay
2	Malus spp. (Apple)	19"	19'	fair	Diseases or Conks, Leaning
3	Malus spp. (Apple)	13"	13'	fair	Dieback 30% - 60%
4	Robinia pseudoacacia (Black Locust)	19"	19'	fair	Heavy Leaning (>60%)
5	Acer palmatum (Japanese maple)	9"	9'	poor	Dieback 30% - 60%, Visible Decay
6	Thuja plicata (Western Redcedar)	18"	18'	good	
7	Malus spp. (Apple)	18"	18'	poor	Branch Failures, Biotic Damage (Pests/Fungus), Dieback 60%-90%, Diseases or Conks, Visible Decay
8	Acer palmatum (Japanese maple)	12"	12'	good	
9	Malus spp. (Apple)	17"	17'	fair	Biotic Damage (Pests/Fungus), Dieback 30% - 60%, Leaning
10	Malus spp. (Apple)	11"	11'	poor	Included Bark, Dieback 30% - 60%, Leaning
11	Acer saccharum (Sugar Maple)	22"	22'	good	Dieback 30% - 60%
12	Aesculus californica (California Buckeye)	26"	26'	fair	Branch Failures, Dieback 30% - 60%, Leaning
13	Quercus garryana (OR White Oak)	43"	43'	fair	Leaning
14	Aesculus californica (California Buckeye)	10"	10'	fair	Dieback 30% - 60%
15	Robinia pseudoacacia (Black Locust)	25"	25'	fair	Branch Failures, Dieback 30% - 60%, Leaning
16	Picea pungens (Blue Spruce)	6"	6'	poor	Branch Failures, Branches Suppressed, Dieback 30% - 60%, Visible Decay
17	Acer saccharum (Sugar Maple)	18"	18'	poor	Branch Failures, Branches Suppressed, Dieback 30% - 60%, Visible Decay
18	Acer saccharum (Sugar Maple)	19"	19'	poor	Branch Failures, Branches Suppressed, Dieback 30% - 60%, Visible Decay
19	Picea pungens (Blue Spruce)	7"	7'	poor	Branch Failures, Branches Suppressed, Dieback 30% - 60%, Visible Decay
20	Thuja occidentalis (Aborvitae)	6"	6'	poor	Branch Failures, Branches Suppressed, Co-dominant, Dieback 30% - 60%, Visible Decay
21	Malus spp. (Apple)	6"	6'	poor	Branch Failures, Branches Suppressed, Dieback 30% - 60%, Visible Decay
22	Acer saccharum (Sugar Maple)	20"	20'	poor	Branch Failures, Branches Suppressed, Dieback 30% - 60%, Visible Decay
23	Acer palmatum (Japanese maple)	15"	15'	good	
24	Robinia pseudoacacia (Black Locust)	33"	33'	poor	Branch Failures, Dieback 30% - 60%, Leaning, Visible Decay
25	Thuja plicata (Western Redcedar)	44"	44'	fair	Leaning, Visible Decay

© COPYRIGHT 2023, PLANNING SOLUTIONS, INC. NO PART OF THIS DRAWING MAY BE COPIED OR REPRODUCED WITHOUT WRITTEN PERMISSION OF PLANNING SOLUTIONS, INC.

DISCLAIMER AND LIMITATIONS: ANY WORK CONTAINED HEREIN INCLUDING BUT NOT LIMITED TO PLANS AND DOCUMENTS ARE INSTRUMENTS OF SERVICE INTENDED FOR USE SOLELY WITH RESPECT TO THIS PROJECT. ALL WORK SHALL BE CONSIDERED CONCEPTUAL AND SUBJECT TO CHANGE. THESE INSTRUMENTS OF SERVICE SHALL BE CONSIDERED A WORK IN PROGRESS WHERE UNKNOWN FACTORS EXIST AND JURISDICTIONAL REQUIREMENTS HAVE NOT BEEN VERIFIED. DUE TO THE HIGH DEGREE OF UNCERTAINTY ASSOCIATED WITH A CONCEPTUAL DESIGN, THESE INSTRUMENTS OF SERVICE SHALL NOT BE USED AS THE BASIS FOR A FINANCIAL EVALUATION OR CONSTRUCTION COST ESTIMATING. NO ASSURANCES ARE OFFERED OR IMPLIED AS TO THE OVERALL FEASIBILITY OF THE PROJECT. ALL WORK SHALL BE SUBJECT TO REVIEW AND FINAL APPROVAL BY ALL APPROPRIATE FEDERAL, STATE AND LOCAL AGENCIES AND SHALL CONTAIN THE PROFESSIONAL SEAL AND SIGNATURE OF ALL REQUIRED DESIGN PROFESSIONALS PRIOR TO ANY USE OF THESE DOCUMENTS. PLANNING SOLUTIONS, INC. AND ITS CONSULTANTS SHALL BE DEEMED THE AUTHORS AND OWNERS OF THEIR RESPECTIVE INSTRUMENTS OF SERVICE AND SHALL RETAIN ALL COMMON LAW STATUTORY AND OTHER RESERVED RIGHTS, INCLUDING COPYRIGHTS.