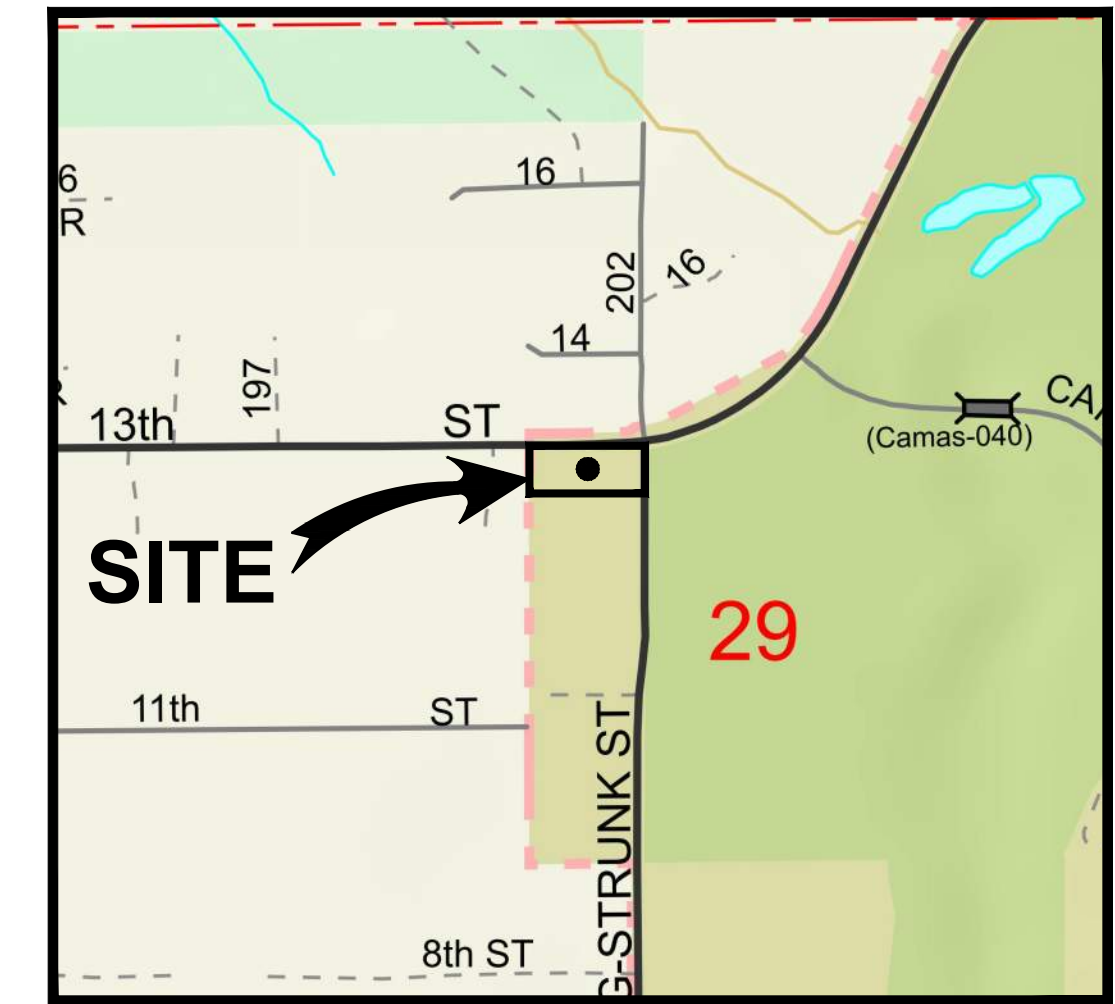


13th Street Site Plan

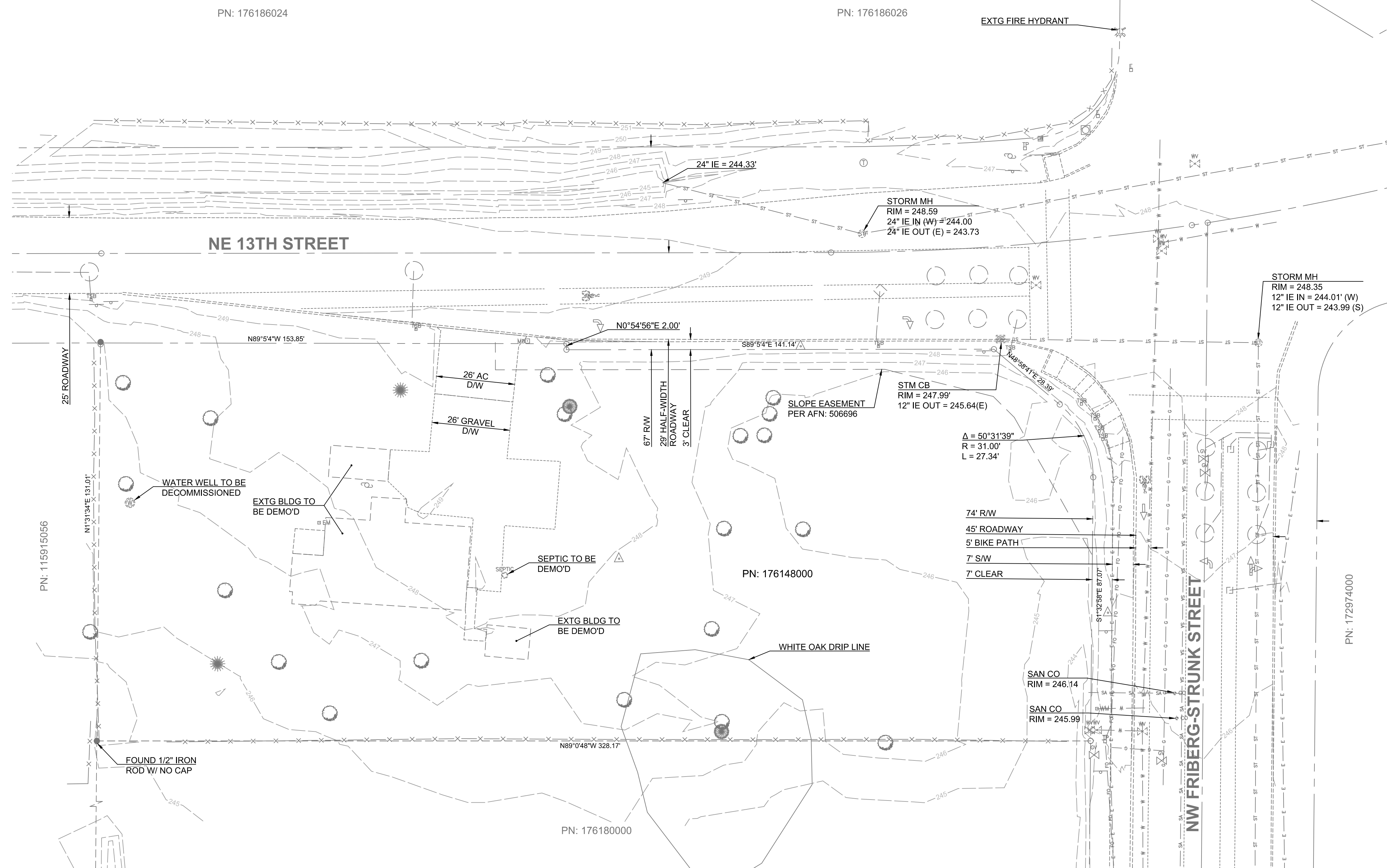
Located in the NW ¼ of Section 29, T2N, R3E, W.M.
City of Camas, Washington



VICINITY MAP
NOT TO SCALE

Sheet Index

1. Existing Conditions Plan
2. Preliminary Site Plan
3. Preliminary Utility Plan
4. Preliminary Grading Plan
5. Existing Tree Survey TP
6. Preliminary Landscape Plan L1
7. Final Landscape Details PD
8. Preliminary Irrigation Details ID



GENERAL NOTES

APPLICANT:
Taz Kahn
3993 NW Currawong Court
Camas, WA 98607
TKahnusa@gmail.com

OWNER:
Pak USA Camas LLC
20107 NE 13th Street
Camas, WA 98607

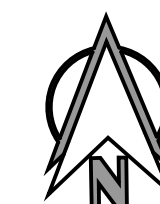
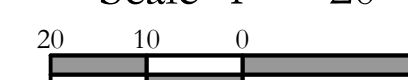
CIVIL ENGINEER:
PLS Engineering
Contact: Travis Johnson, PE
604 W Evergreen Blvd
Vancouver, WA 98660
PH: (360) 944-6519
pm@plsengineering.com

SITE ADDRESS:
Parcel # 176148-000
20101 NE 13TH ST
Camas, WA 98607

HORIZONTAL DATUM:
NAD 83 (2011) Washington State plane coordinate system, south zone, us survey feet. Based on real time kinematic corrections from the Washington State reference network.

VERTICALL DATUM:
NGVD 1929(47) based on real time kinematic corrections from the Washington State reference network.

Scale 1" = 20'



Existing Conditions Plan For:

13th Street Site Plan

A Subdivision Located In The City Of Camas, Washington

Revisions

NO.	DATE	DESCRIPTION
1		
2		
3		
4		
5		
6		



Project No. 3632

SCALE: H: 1" = 20'
V: N/A

DESIGNED BY: SWG

DRAFTED BY: JSV

REVIEWED BY: TGJ

1

8