



Camas-Washougal Fire Department Partnership Analysis

September 7, 2021





STATUS UPDATE

DEFINE THE CURRENT STATE

DEFINITION OF SUCCESS

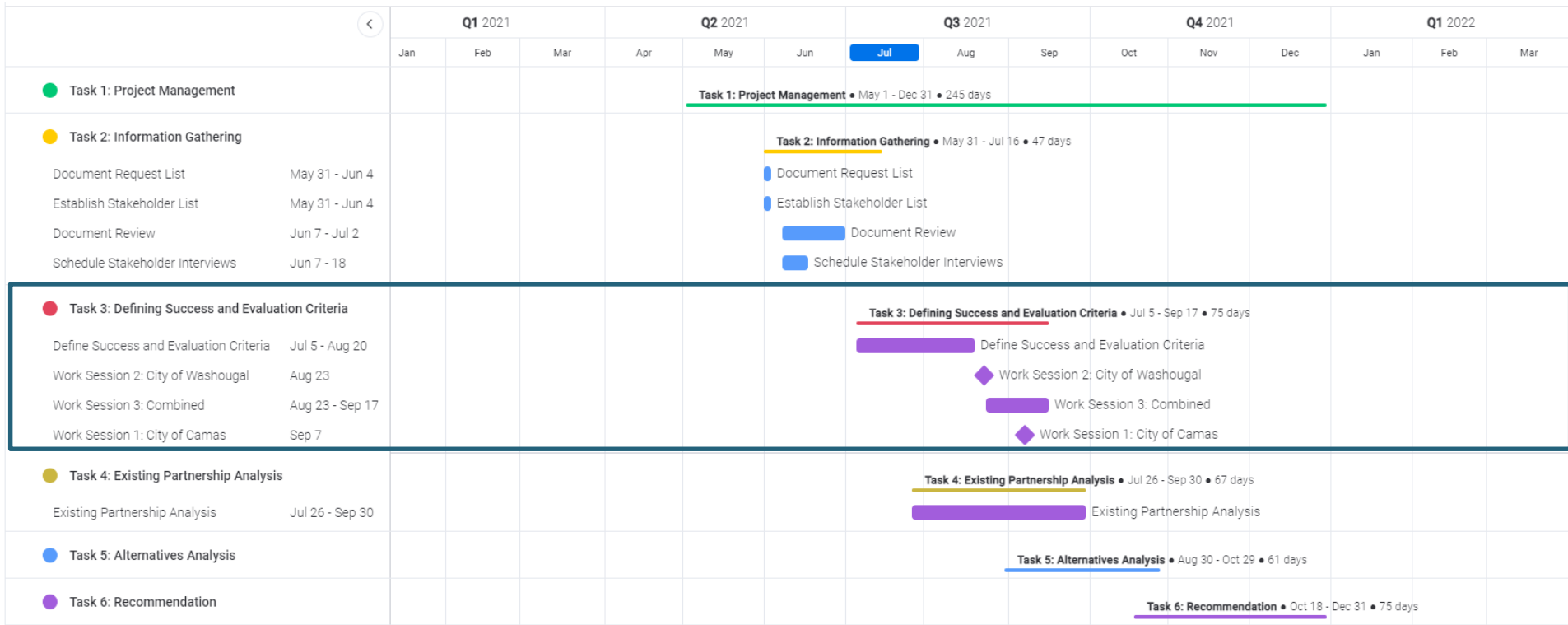
SUCCESS CRITERIA

NEXT STEPS

STATUS UPDATE



STATUS UPDATE



DEFINE THE CURRENT STATE

What we heard

WHAT WE HEARD

- + Valuable partnership
- + Organizational imbalance
- + Communications challenges

WHAT WE HEARD

- + Fiscal sustainability concerns
- + Progress barriers
- + External pressures

ESTABLISHING A DEFINITION OF SUCCESS

DEFINITION OF SUCCESS

*Sustainable & Equitable Approach
to Delivering Fire and EMS to the
combined communities of Camas
and Washougal*

DEFINITION OF SUCCESS

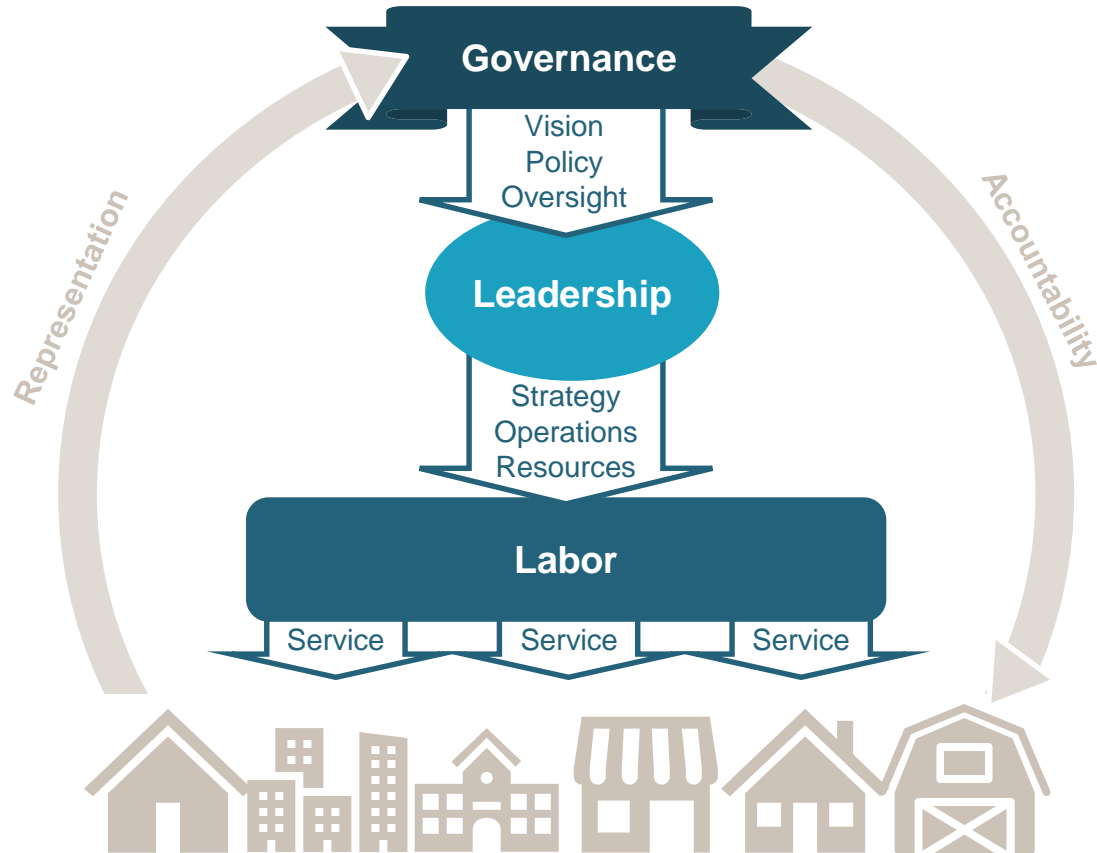
Sustainable
&
Equitable

*“able to be maintained at a certain level”
long-term, stable, consistent, sufficient*

balanced, aligned, supported

*“fair and impartial”
objective, representative, proportional,
service equity*

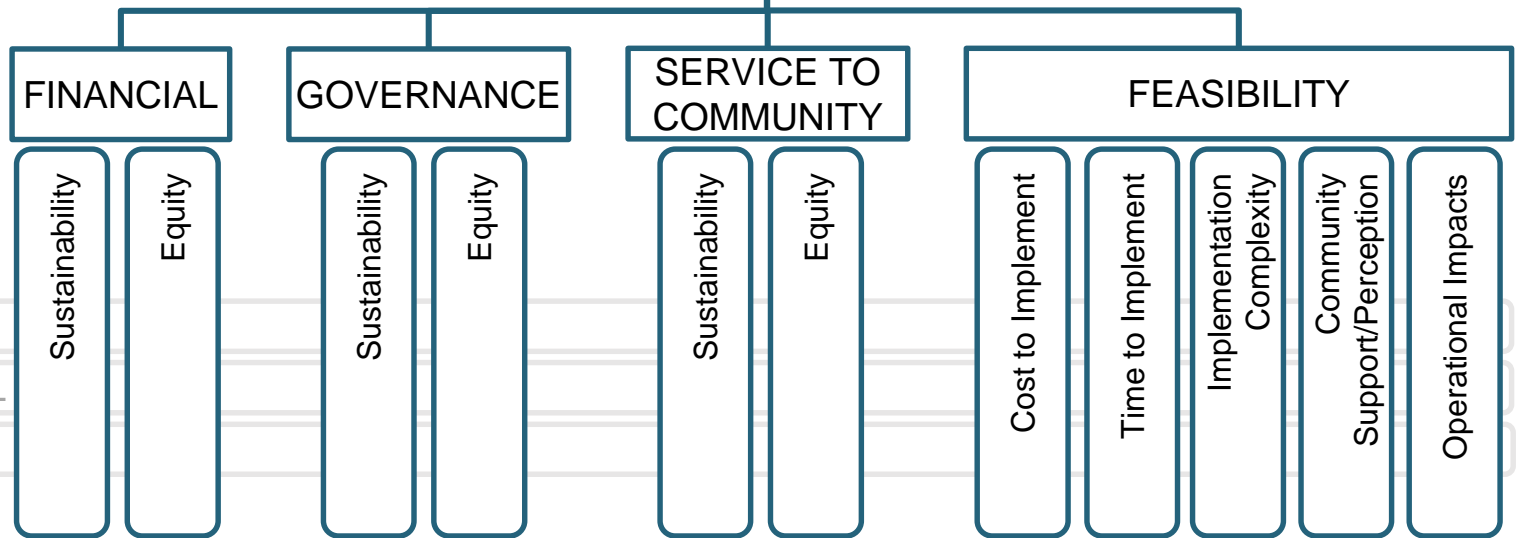
ORGANIZATIONAL BALANCE



SUCCESS CRITERIA

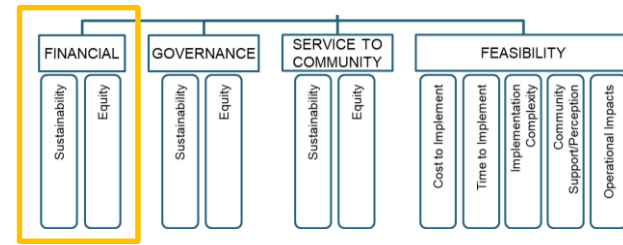
SUCCESS CRITERIA

*Sustainable & Equitable
Approach to Delivering
Fire and EMS*



CAMAS
WASHOUGAL
COMMUNITY

SUCCESS CRITERIA (Examples)



FINANCIAL

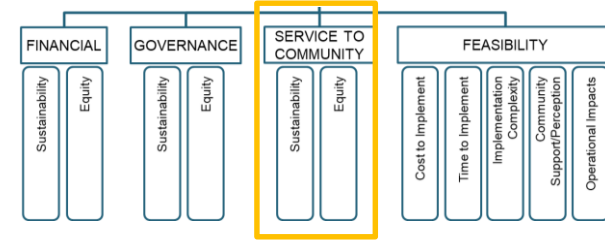
Sustainability - Does the proposed alternative:

- Ensure financial stewardship? (efficient use of resources, optimized resource allocation, etc.)
- Establish/maintain/enhance long-term, dedicated funding sources?
- Establish a stable, predictable cost-sharing mechanism?
- Etc.

Equity - Does the proposed alternative:

- Transparently allocate costs among partners and across community members based on objective data and metrics?
- Demonstrate a correlation between cost of service and services provided?
- Fairly distribute cost burden among community members?
- Etc.

SUCCESS CRITERIA (Examples)



SERVICE TO COMMUNITY

Sustainability - Does the proposed alternative:

- Provide a long-term operating structure for consistent and reliable service?
- Build long-term capacity to meet increased service demands?
- Etc.

Equity - Does the proposed alternative:

- Provide the same lines of service (i.e. fire and EMS) to all community members?
- Provide the same level of service to all community members within the service area?
- Etc.

NEXT STEPS

NEXT STEPS

- + Online feedback regarding success criteria
- + Existing partnership analysis and joint work session (Schedule TBD)
- + Alternatives identification and analysis