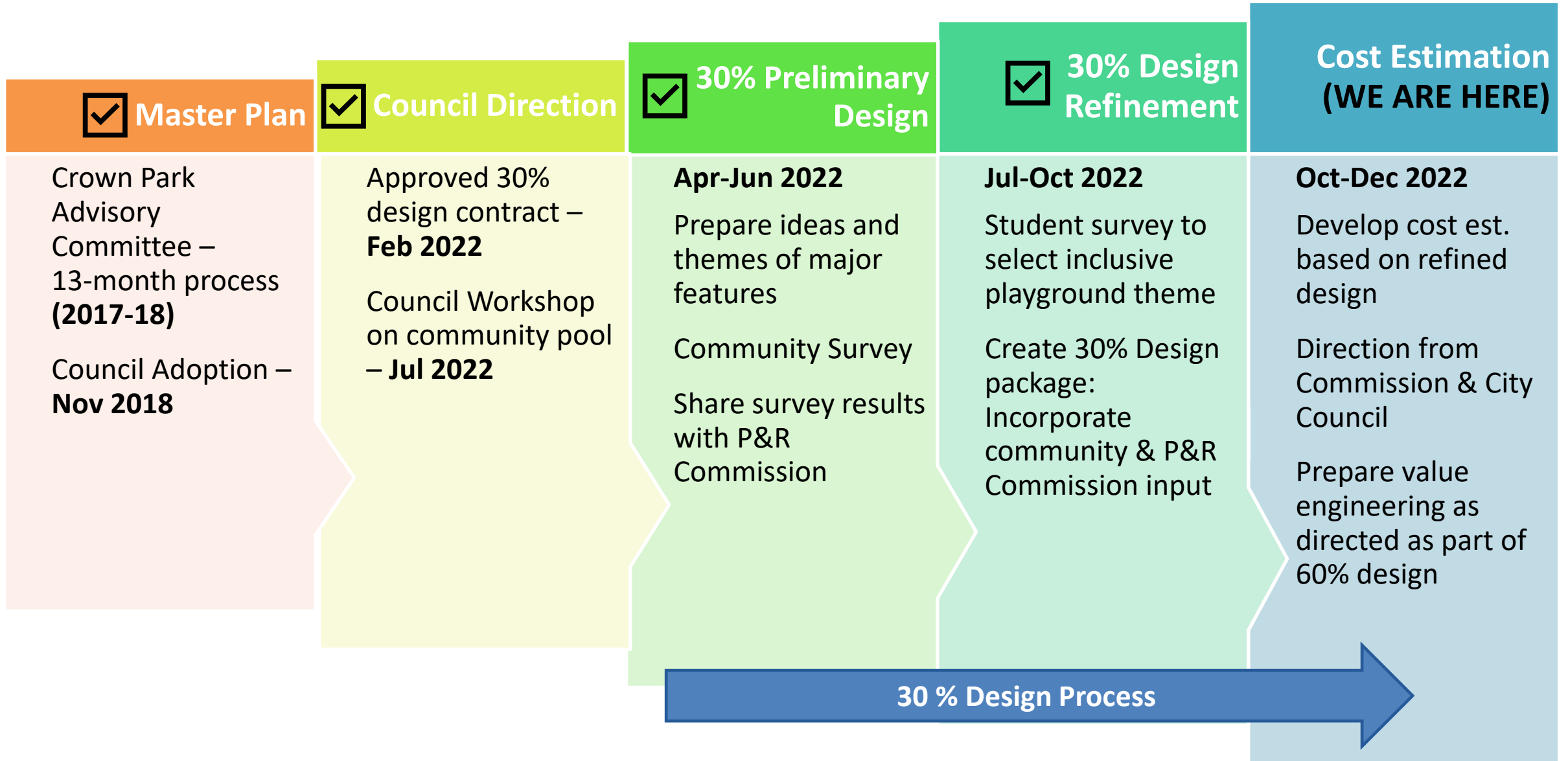


# Crown Park Improvements

- Overview
- 30% Design
- Water Feature & Playground Update
- Trees
- Furnishings & Restroom
- Cost Estimate
- Discussion
- Next Steps



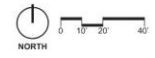


# Overview

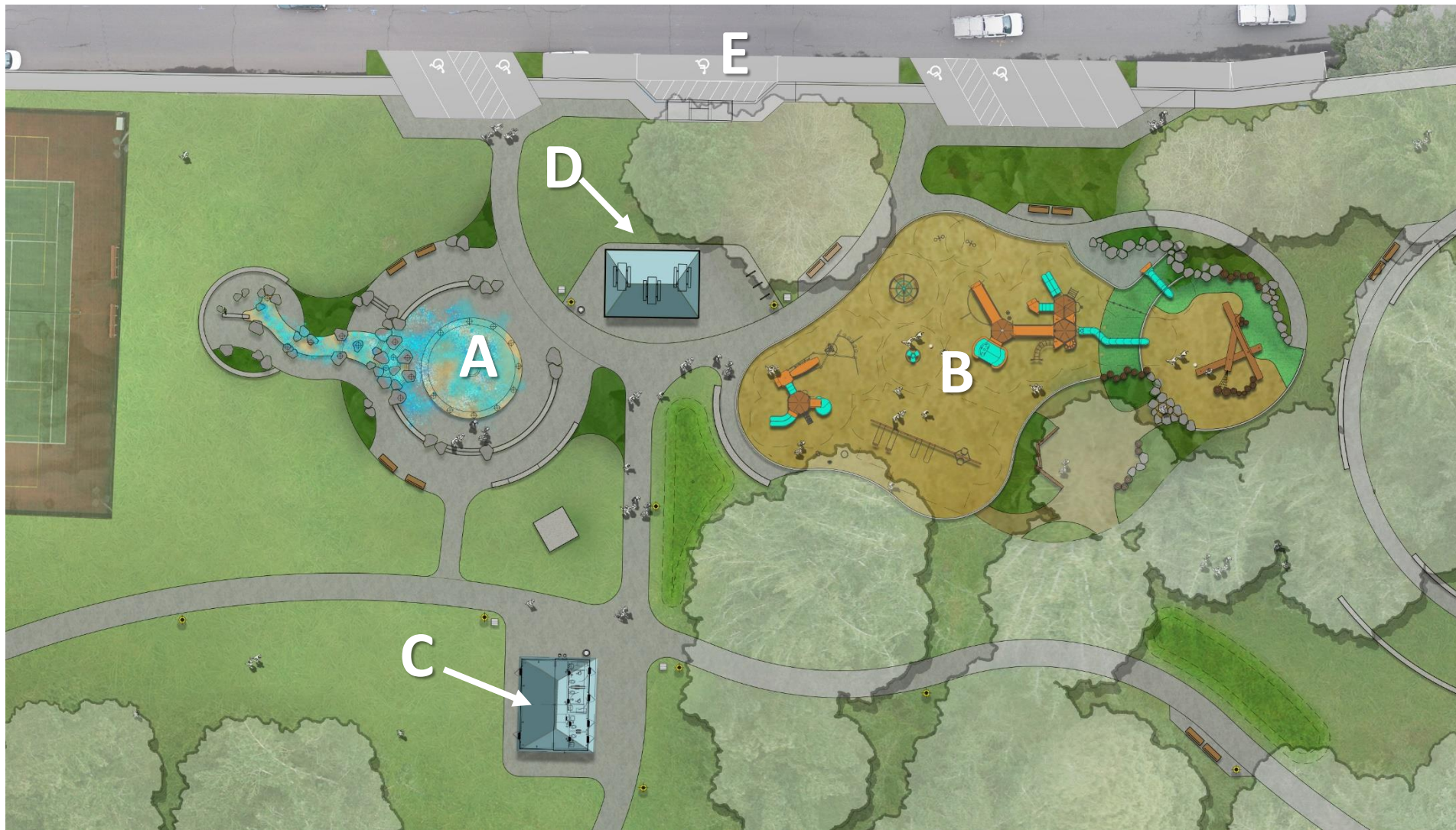


**KEYNOTES**

① BENCH, TYP.	⑦ PLAYGROUND	⑬ EXISTING MONUMENT SIGN	⑲ STORMWATER PLANTER, TYP.
② RESTROOM	⑧ 6' CONCRETE PATH	⑭ PICNIC TABLE, TYP.	⑳ BIOSWALE AREA, TYP.
③ WATER FEATURE	⑨ 12' CONCRETE PATH	⑮ GRAVEL PATH	㉑ ADA PARKING
④ PICNIC SHELTER	⑩ EXISTING PICNIC SHELTER	⑯ LIGHT, TYP.	
⑤ AMPHITHEATER SEATING	⑪ SCOUT HALL	⑰ SPORT'S COURT	
⑥ ADA RAMP	⑫ OPEN LAWN	⑱ LOW UNDERSTORY PLANTING, TYP.	

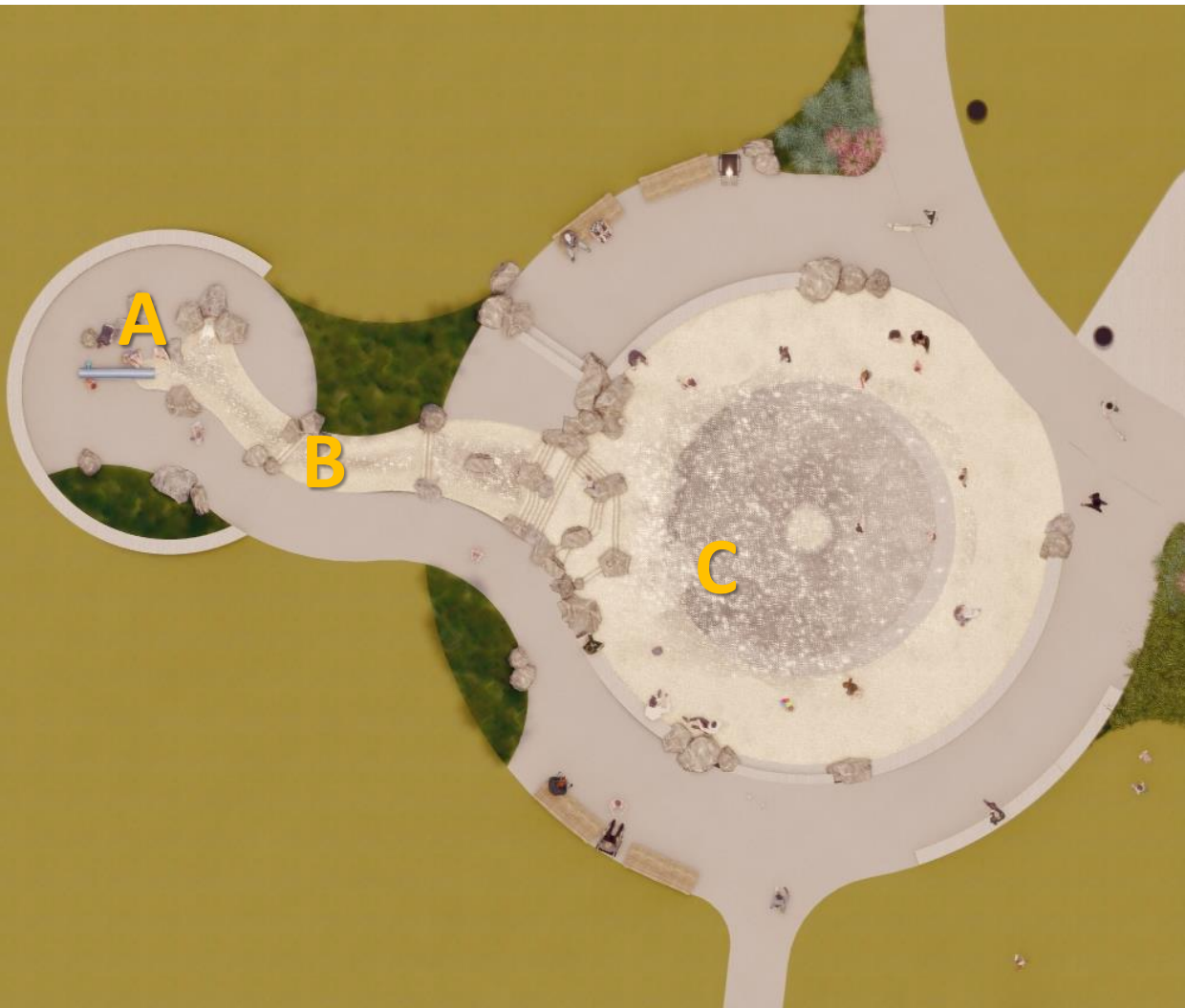


**30% Design**



- A. Water Feature**
- B. Inclusive Playground**
- C. Restroom**
- D. Picnic Shelter**
- E. ADA Parking**

**Phase 1**



- A. The Source
- B. Stream
- C. Celebration

## Water Feature Design





## Water Feature Design

## Waterfeature Cost Comparison (22 weeks of operations)

<i>Capital Items</i>	Flow Thru System	Recirculating System	<i>Notes</i>
Water Features & Hardscape	\$255,000	\$255,000	
Pump and Filtration System	\$0	\$110,000	
Holding Tank	\$0	\$30,000	
Mechanical Room	\$0	\$100,000	
			Net Difference
<b>Total Hard Cost</b>	<b>\$255,000</b>	<b>\$495,000</b>	<b>\$240,000</b>
 <b>Annual O&amp;M Costs</b>			
Water	\$26,210	\$100	
Chemicals	\$0	\$1,000	
Incidental Repairs	\$1,500	\$5,000	
Maint. (Staff cost)	<u>\$2,420</u>	<u>\$4,840</u>	
			Net Difference
<b>Total annual O&amp;M</b>	<b>\$30,130</b>	<b>\$10,940</b>	<b>\$19,190</b>

### Flow-through versus Recirculating

- ✓ Feasibility (Geotechnical)
- ✓ Water Usage Costs
- ✓ Capital Costs
- ✓ Maintenance Costs
- ✓ Value of Water Conservation

## Water Feature Design

On full capacity, Flow Through System water usage would cost \$26,000/yr and fill an Olympic sized pool (660,000 gallons) once every 6 days / 19 times per season.

It would take 13 years to recuperate the capital cost of the water recirculating system through water usage cost savings.



## WHAT IS INCLUSIVE PLAY?

An inclusive playground goes beyond the minimum level of accessibility in order to create a place where children of all abilities can play together. Outdoor play environments can create opportunities to ensure that people of all ages and abilities can be both physically and socially active through play and recreation, while dramatically and positively impacting children's play experiences.

– PlayCore & Utah State University 2010



PHYSICALPLAY



SENSORYPLAY



SOCIALPLAY



COGNITIVEPLAY



EMOTIONALPLAY





A: Option Treehouse Theme

- A. Playground: Inclusive & Nature Themed Equipment
- B. Playground: Nature Play Equipment

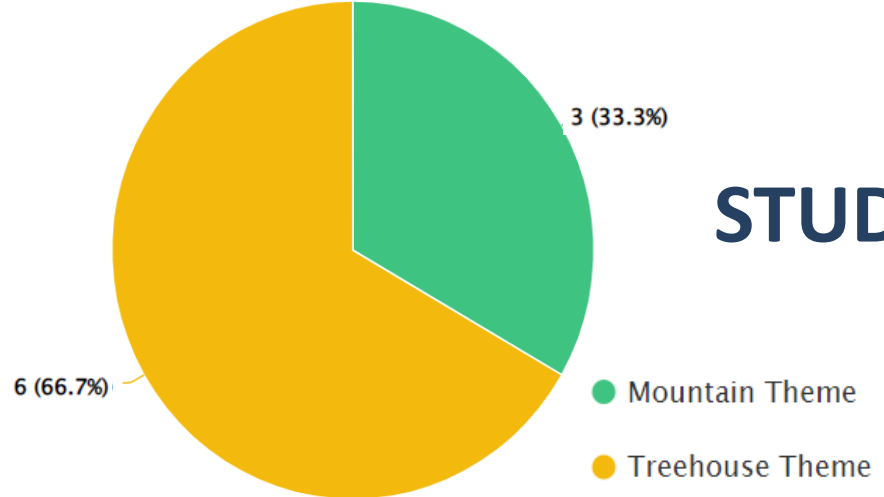


B: Nature Plan



A: Option Mountain Theme

## Playground Design Options



# STUDENT POLL WINNER: **TREEHOUSE** design

Elementary & Middle Schools: 9 classes participated



**Preferred Playground Design – Nature Themed**



Crown Park Playground



1167493-01-03-03 • 11.11.2022

©2022 Landscape Structures. All Rights Reserved.

# Updated Playground Design – Nature Themed

TREEHOUSE design



Crown Park Playground

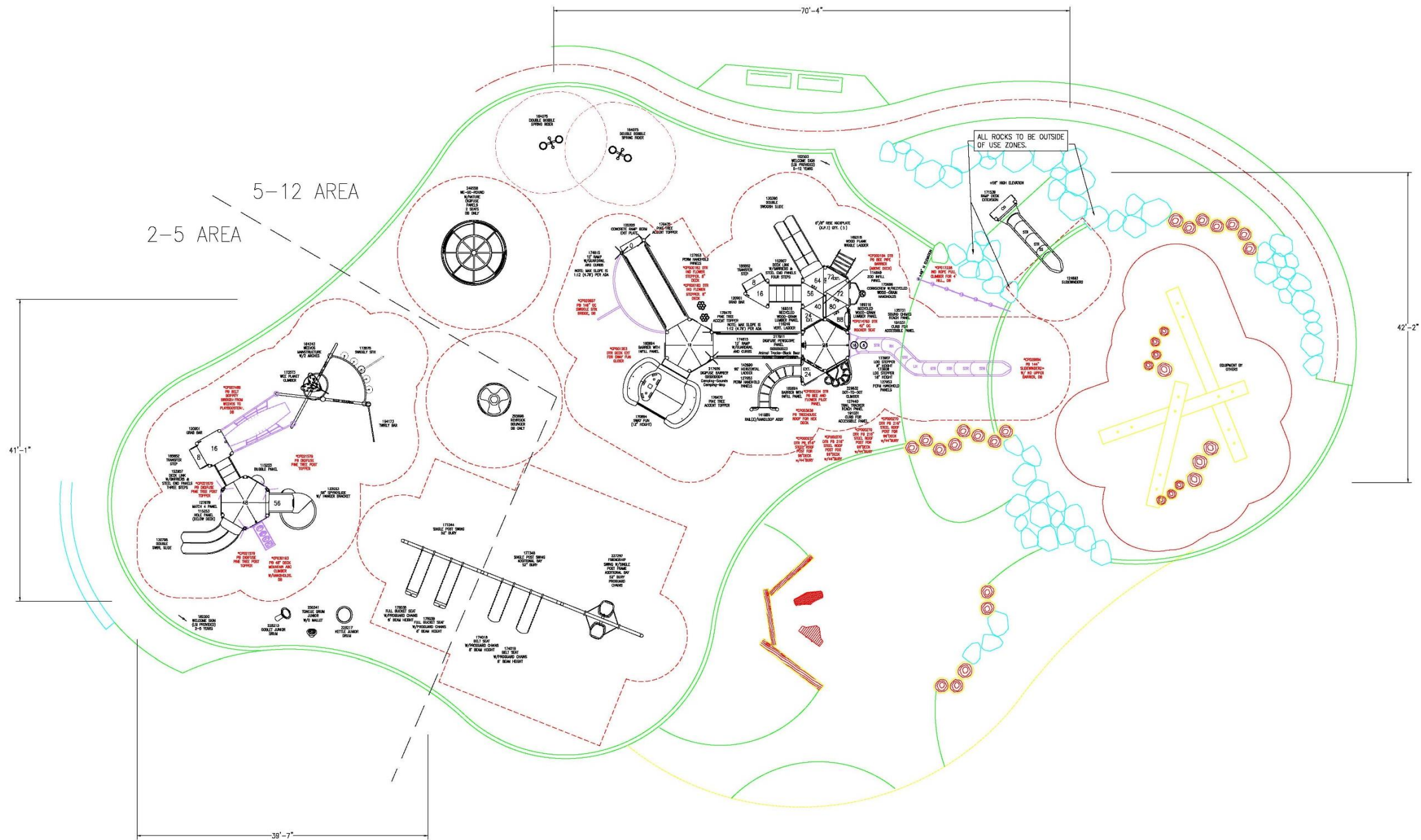


1167493-01-03-01 • 11.11.2022

©2022 Landscape Structures. All Rights Reserved.

**Updated Playground Design – Nature Themed**

**TREEHOUSE design**



# Updated Playground Design – Nature Themed

TREEHOUSE design



## Playground Design – Nature Play



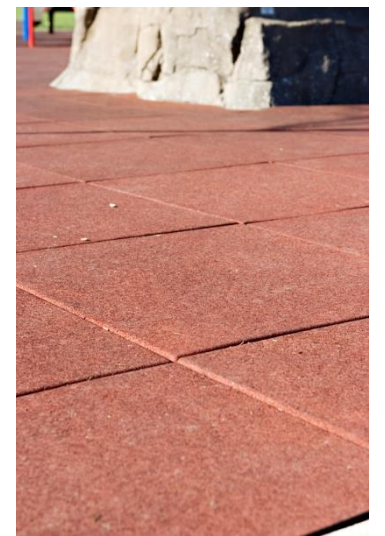
Engineered Wood Fiber



Poured-in-Place Rubber

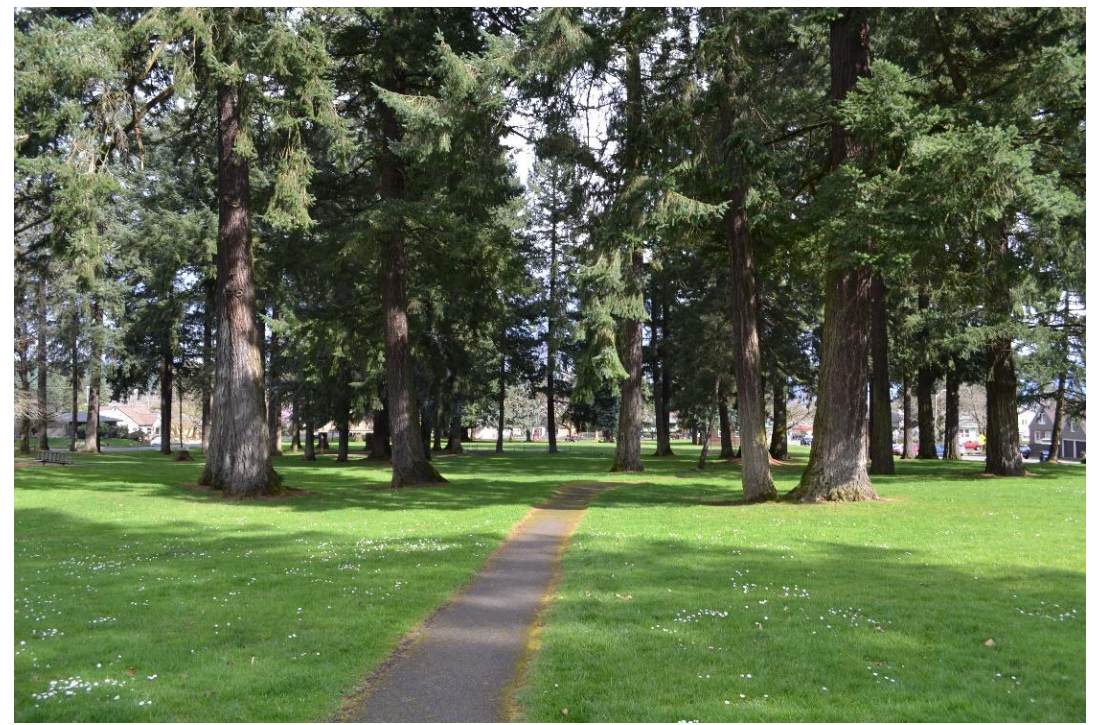


Artificial Turf



Rubber Tiles

# Playground Surfacing



### INVENTORY:

<u>Dead</u>	<u>1</u>
<u>Dying</u>	<u>3</u>
<u>Poor</u>	<u>6</u>
<u>Fair</u>	<u>39</u>
<u>Good</u>	<u>105</u>
<b>TOTAL</b>	<b>154</b>



# Trees – Arborist Report





## Pole Mounted Pedestrian Light

- Provide Safety/Surveillance
- LED Cut-off Fixtures
- Dark Sky Compliant
- Less Fixtures than Bollards
- Blend of Period and Modern



## Benches



## Bike Racks

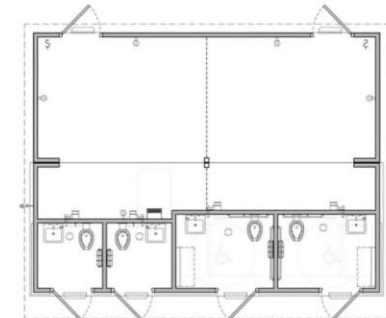
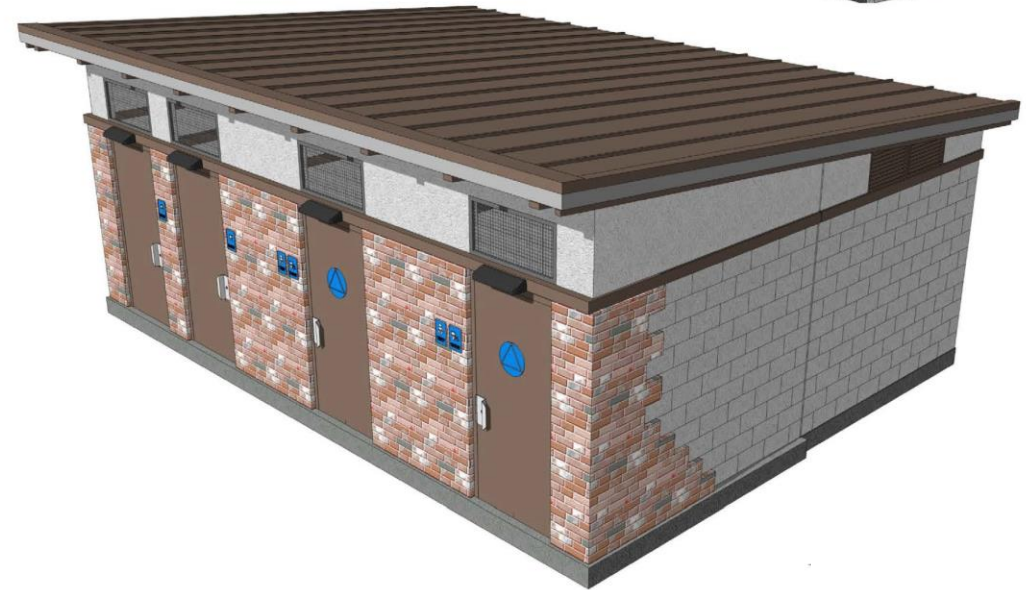


## Trash Receptacles

- Secured side opening for easy maintenance
- Covered receptacle to protect from rain
- Sized opening to avoid deposit of large trash items

# Site Furnishings

- 4 all-user restrooms (includes 2 ADA compliant stalls)
- Storage for maintenance staff
- Utility chase
- Recirculating filtration system for Interactive Water Feature



**FLOOR PLAN**  
SCALE: NOT TO SCALE

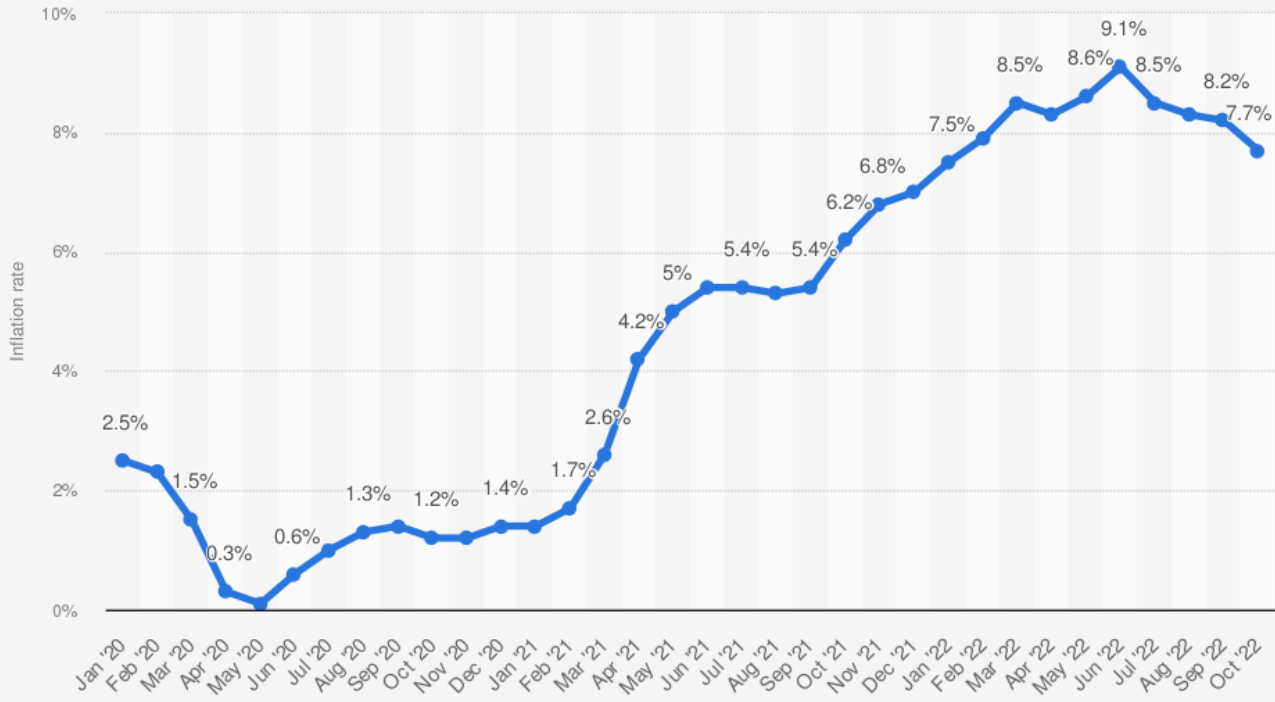
RESTROOM/  
STORAGE BUILDING

# Restroom



# Monthly 12-month inflation rate in the United States from January 2020 to October 2022

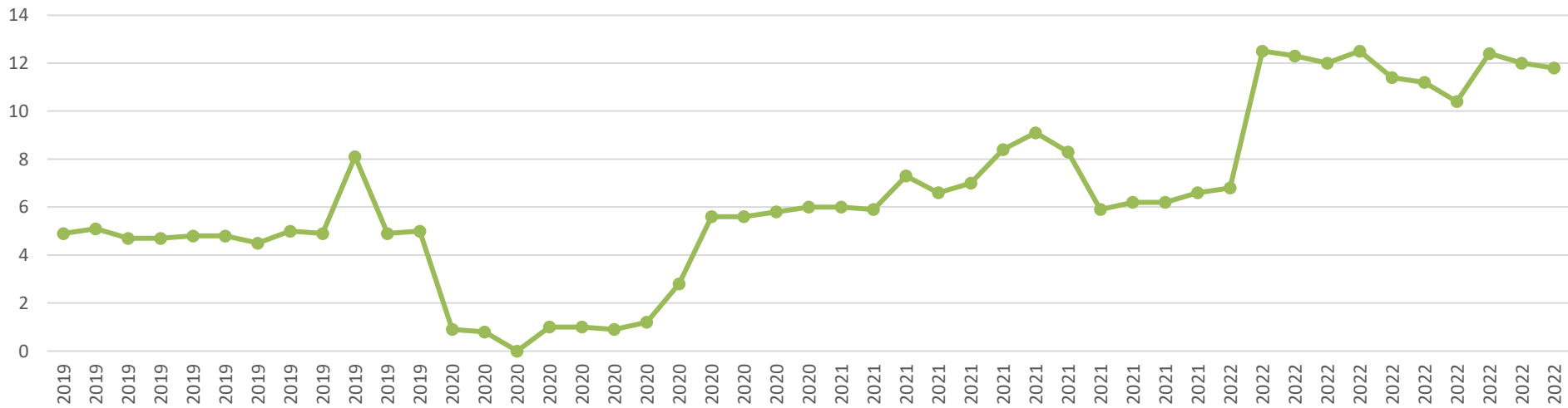
2022



**Engineering News-Record (ENR) index**  
**ENR Seattle Construction Cost Index (CCI)\* - JULY for PIF indexing:**

*\*The ENR indexes measure how much it costs to purchase this hypothetical package of goods compared to what it was in the base year. The CCI uses 200 hours of common labor, multiplied by the 20-city average rate for wages and fringe benefits.*

EnR Seattle Construction Cost Index (CCI)



	<i>Full Park Master Plan Estimate</i>	<i>Full Park 30% Estimate</i>	<i>Variance</i>
<b>HARD COSTS*</b>	<b>\$4,010,000</b>	<b>\$5,412,000</b>	<b>\$1,402,000</b>
Inflation (15%, 10%)	\$601,500	\$811,800	\$210,300
Contingency (25%, 20%)	\$1,002,500	\$1,082,400	\$79,900
<b>TOTAL HARD COST</b>	<b>\$5,614,000</b>	<b>\$7,306,200</b>	<b>\$1,692,200</b>
<b>SOFT COSTS</b>	<b>\$620,500</b>	<b>\$620,500</b>	<b>\$0</b>
<b>TOTAL PROJECT COST</b>	<b>\$ 6,234,500</b>	<b>\$ 7,926,700</b>	<b>\$ 1,692,200</b>

*\* Includes Taxes, Mobilization, General Conditions (GC), GC Bond & Insurance, GC OH & Profit*

## Costs

## Estimate of Probable Cost

<i>Item</i>	<i>2021 Costs</i>	<i>2022 Costs</i>	<i>Variance</i>	<i>Notes</i>
Site Clearing	\$ 131,000	\$ 273,460	\$ 142,460	Erosion, Clearing, Fencing, Demolition
Earthwork	\$ 56,000	\$ 180,220	\$ 124,220	Rough and Finish Grading, Imported Fill
Utilities - Water, Sanitary, Storm	\$ 90,900	\$ 316,650	\$ 225,750	Domestic Water, Storm, Sanitary
Electrical and Lighting	\$ 100,000	\$ 288,000	\$ 188,000	Electrical Distribution, Light fixtures along pathway
Paving	\$ 320,000	\$ 324,000	\$ 4,000	Concrete and Gravel paths, Walls (excludes Water Play)
Interactive Water Feature	\$ 216,250	\$ 499,260	\$ 283,010	Paving, equipment, controls
Playground and Equipment	\$ 620,000	\$ 826,820	\$ 206,820	Equipment, Surfacing, Edging
Restrooms (2,1)	\$ 500,000	\$ 400,000	\$ (100,000)	Structure and surrounding Concrete paving
New Picnic Shelter	\$ 50,000	\$ 75,000	\$ 25,000	Premanufactured structure and Furnishings
Scout Hall Improvements	\$ 40,000	\$ 24,930	\$ (15,070)	Courtyard and ADA Ramp
Amphitheater	\$ 62,800	\$ 54,660	\$ (8,140)	Concrete seating and paving (excludes lawn)
Sport's Court	\$ 24,100	\$ 67,280	\$ 43,180	Paving, Paint, Hoops, Benches
Site Furnishings	\$ 133,000	\$ 100,200	\$ (32,800)	Benches, Picnic Tables, Trash, etc.
Irrigation	\$ 315,000	\$ 307,270	\$ (7,730)	New Fully Automatic System
Planting	\$ 280,000	\$ 346,000	\$ 66,000	Trees, Plants, Seeding, Soil Preparation
ROW Improvements	\$ 152,000	\$ 46,200	\$ (105,800)	Allowance
<b><i>Subtotal</i></b>	<b>\$ 3,091,050</b>	<b>\$ 4,129,950</b>	<b>\$ 1,038,900</b>	

## Costs



## **Parks & Recreation Commission Recommendation**

*(11.30.22 Meeting)*

**The Commission recommends completing the entire park to meet the objectives and design intent of the Master Plan, however for the design team to complete value engineering to align project cost with proposed budget request in the FY 2023-24 budget.**





## Questions & Feedback

## Next Steps

1. Value Engineering **December- February '23**
2. 60% Design **Spring '23**  
*(Requires Council contract approval)*