

# NAKIA CREEK FIRE TIMBER SALVAGE

January, 2023 City Council Work Session



# Nakia Creek Fire Impacts

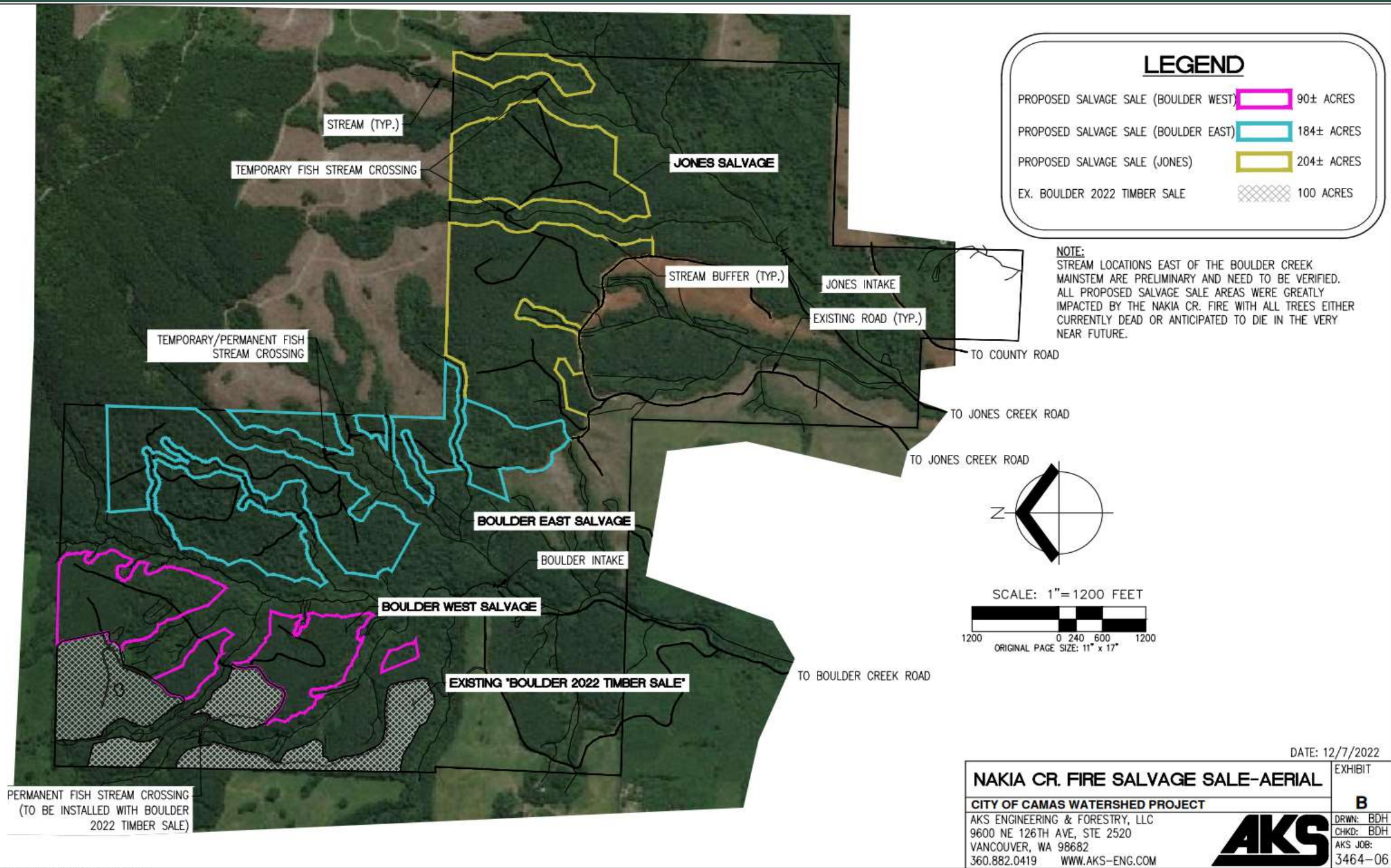
- The city owns approximately 1700 acres of land in the Jones and Boulder Creek watersheds
- During the recent fire, approximately 800 acres of this land was impacted
- Assessment of the 800 acres;
  1. 568 acres of this burn should be harvested within a year while it still has value to saw mills
  2. Liability of this acreage will become an issue with increased fire risk and difficulty in successful reforestation
  3. After 1 year, value of the timber can be drastically reduced or lost if trees are damaged by insects or die due to lack of food



# Nakia Creek Fire

---





Nakia  
Creek  
Timber  
Fire  
Salvage  
Sites

# Timber Salvage Scope of Work

- Professional Services Agreement with AKS Engineering and Forestry will develop three sites for timber salvage:
  - Boulder West, Boulder East, and Jones Salvage
- Development of the sites will include bid packets with timber site layout, road layout and design, permitting, and harvest volume for each site.
- Turbidity monitoring of Jones Creek.
- Contract administration of logging contractors.

# Timber Salvage Scope of Work

- The proposed contract with AKS Engineering and Forestry is \$423,000

It is anticipated that if there are interested bidders in the three salvage areas, revenue to the city could be as follows;

- 1) Boulder West Salvage - \$1.1M+/-
- 2) Boulder East Salvage - \$1.4M+/-
- 3) Jones Salvage - \$1.6M+/-

Revenue projections are based upon an approximate 10% reduction in value due to the fire

- Two PSA's have been executed with AKS after the fire;
  - 1) \$25,000 to assess fire damaged areas and prioritize salvage areas
  - 2) \$25,000 to re-establish cut line boundaries, stream buffers and roadways on the existing Boulder 2022 Timber sale

# Nakia Creek Fire Salvage

## QUESTIONS?

- Due to the timing involved with bidding the project, staff has placed this item on the consent agenda for tonight's meeting.