

# City of Camas – Sports Fields Assessment

Strategic Assessment and Recommendations

*Planning Framework for Future Athletic Facility Investments*



# Project Background

- Responds to PROS Plan priorities of maintaining what we have, improve existing parks, field capacity, equitable access, and multi-use adaptability
- Aligns with City strategic goals of Stewardship of City Assets and Vibrant Community Amenities

## Why this study?

- Growing demand for youth and adult sports
- Wet seasons reduce natural-grass availability
- Need for a clear, defensible framework to guide reinvestment
- Develop strategies to optimize current facilities and add new capacity where needed
- Identify priority investments with equity, accessibility, and partnership in mind



# Planning Process Structure

- Establish a clear understanding of existing facility conditions and operational constraints
- Document community use patterns, satisfaction, and unmet needs
- Incorporate input from organized user groups and regional partners
- Apply consistent evaluation criteria to prioritize reinvestment opportunities
- Align recommendations with City goals related to equity, accessibility, and long-term sustainability
- ***This is a planning and prioritization effort, not a construction proposal.***





# Facilities Included in the Assessment

## RECOMMENDED IMPROVEMENTS

- 1 Forest Home Park
- 2 Crown Park
- 3 Prune Hill Sports Park
- 4 Dorothy Fox Park
- 5 Fallen Leaf Park
- 6 Louis Bloch Park
- 7 Goot Park
- 8 Grass Valley Park
- 9 Oak Park





# Methodology

- Data collection & Technical Analysis
  - Site visits and condition assessment
  - Review of existing plans and operations
  - Utilization and demand context
- Community Online Survey (385 respondents)
- Stakeholder and Agency Engagement
- Understand Operational & Maintenance Considerations
- Field and Court Limitations & Considerations
- Establish Criteria for Priority Ranking Matrix
- Develop Site-Specific Recommendations
- Identify Phasing and Implementation Strategy



# Public Engagement

- Community online survey (May-June 2024)
- Stakeholder interviews (leagues, agencies, partners)
- Maintenance and Operations input

## Community / Stakeholder Input

- Reliability and drainage are major concerns
- Limited lighting compresses schedules
- Accessibility barriers
- Strong interest in:
  - Synthetic turf (selectively)
  - ADA and safety Improvements
  - Equitable access across the system





# System-wide Challenges

- Reliability
- Weather-related closures
- Turf wear and drainage limitations
- Aging infrastructure
- Accessibility and ADA gaps
- Parking limitations
- Maintenance capacity stretched thin

Fallen Leaf Softball Field - Drainage

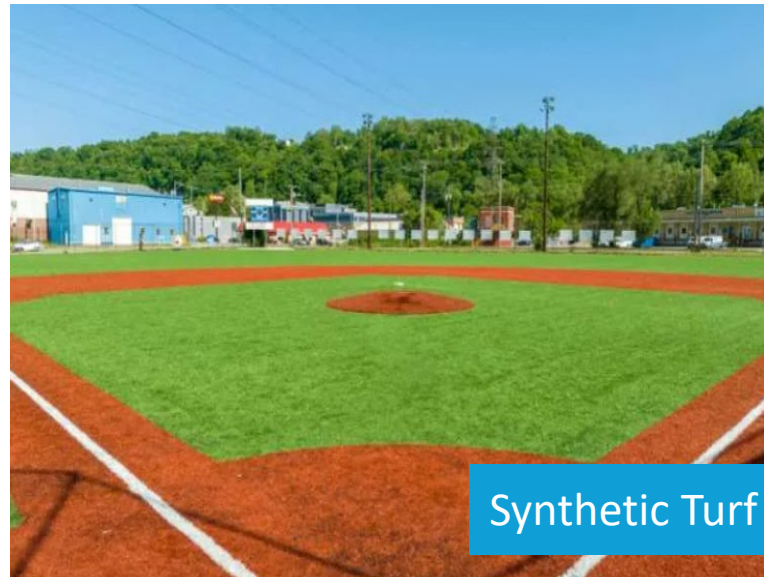


Louis Block Park - ADA



# What Improves the System Most

- Synthetic Turf = more playable hours
- Drainage Improvements
- Permanent LED lighting extends usable hours
- ADA & equity improvements enhance inclusion
- Increase flexibility through multi-use design





# Why Reliability Matters

- **Assumptions (youth prime-time, spring season):**
  - Weekday evening use constrained by school schedules
  - Baseline (natural grass, no lights): ~1 usable evening slot/night
  - Improved (synthetic turf + lights): ~2 usable evening slots/night
  - Weather-related cancellations reduced with turf

## Result:

- Illustrates an order-of-magnitude increase in reliable youth prime-time field availability
- Provided for planning-level consideration only, not a commitment or guarantee





# How Priorities Were Determined

## Priority Ranking Matrix

- Evaluate and compare potential athletic field and court improvements across the park system
  - Provide consistent framework for evaluating investments
  - Incorporate technical, social, operational, and equity considerations
  - Inform phasing and funding strategies over time
- Planning tool rather than a rigid scoring system
- Final implementation decisions may also consider grant timing, partnerships, and site readiness



*Projects are evaluated across multiple balanced criteria, not a single scoring factor.*



# Priority Matrix

## Priority Ranking Matrix Scoring Example

The following criteria are used to assess and prioritize improvement needs for sports field across the City of Camas. Each criterion is scored on a scale from 1 to 3.



### Criteria

### Description

### Scoring Guidance

#### 1. Field Multi-User Accessibility

How accessible is the site to a wide range of users (e.g., youth leagues, casual users, organized clubs)?

1 = Limited access or seasonal use; 2 = Moderate access with shared use; 3 = Highly accessible with ADA features and broad community access

### Priority Ranking Matrix (Scores 1-3 per category)

					Sports Field											Sports Court											
Site Name	Ac.	Park Type	Park Site Average	Park Site Total Score	Criteria											Criteria											
					1. Field Multi-User Accessibility	2. Sport Type Versatility	3. Revenue Potential	4. Existing Condition of Amenities	5. Drainage and Turf Condition	6. Equity and Underserved Access	7. ADA Compliance & Safety	8. Partnership Opportunity	9. Level of Community Support	10. Event and Tournament Readiness	11. Overall Cost of Improvements	1. Court Surface Conditions	2. Court Type Versatility	3. Lighting & Hours of Use	4. Fencing & Containment	5. ADA Compliance & Safety	6. Ancillary Amenities	7. Programming & Utilization	8. Revenue & Partnership Opportun	9. Equity and Underserved Access	10. Maintenance Efficiency	11. Community Support & Visibility	
PARKS																											
Forest Home Park	5.3	Neighborhood Park	1.85	21	2	1	3	2	2	2	1	2	2	2	2	2	1	3	2	2	2	1	2	2	2	2	
Crown Park	7.1	Neighborhood Park	2	10			2		2	1	2				3			2		2	1	2			3		
Prune Hill Sports Park		School Park	2.13	29	3	3	3	3	3	3	3	2	1	3	2	3	3	3	3	3	3	2	1	3	2		
Dorothy Fox Park	2.8	Neighborhood Park	1.45	16	1	3	1	1	1	3	2	1	1	1	1	1	3	1	1	1	3	2	1	1	1	1	
Fallen Leaf Park		Neighborhood Park	1.95	21	2	1	1	3	2	1	2	2	3	2	2	2	1	1	3	2	1	2	2	3	2	2	
Louis Bloch Park	4.9	Neighborhood Park	1.76	23	1	1	3	3	2	1	2	2	3	3	2	1	1	3	3	2	1	2	2	3	3	2	
Goot Park		Neighborhood Park	1.86	23	2	3	2	3	3	2	2	1	1	2	2	2	3	2	3	3	2	2	1	1	2	2	
Grass Valley Park	24.9	Neighborhood Park	1.67	19	2	1	1	2	2	3	2	1	1	2	2	2	1	1	2	2	3	2	1	1	2	2	
Oak Park	2.5	Neighborhood Park	1.75	5					2	1	2								2	1	2						



# Phasing Approach

## Short-Term vs. Long-Term

- Short-term:
  - High-priority and implementation-ready
  - May include higher-cost improvements
- Long-term:
  - Lower-priority sites
  - Future planning or re-programming



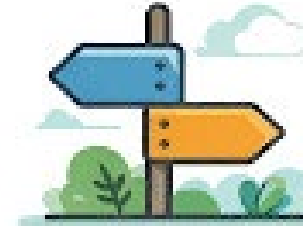
Address  
urgent needs



Align with  
funding cycles



Balance short  
& long-term goals



Stay flexible as  
needs change



Adaptive & Flexible Approach

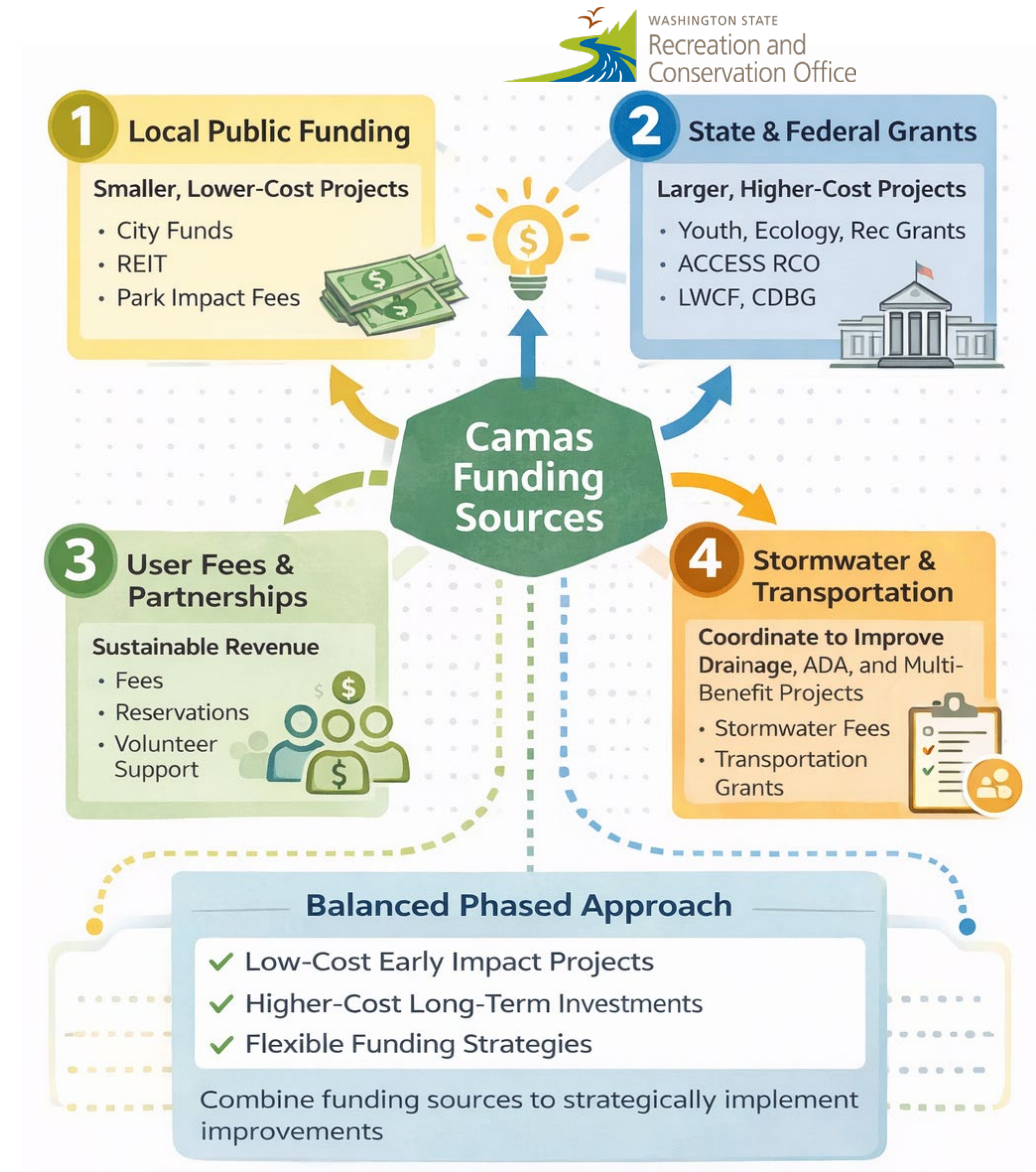


# Funding Considerations

## How Improvements Could Be Funded Over Time

- Existing local funding tools
- State and federal grants
- Partnerships and shared investment
- Long-term options noted, not assumed

*Adoption does not commit the City to specific projects or costs*



# What is Council Being Asked?

## Next Steps

- Receive and acknowledge the assessment
- Use it as a guiding framework for:
  - Capital planning
  - Grant applications
  - Policy discussions
- No project approvals or funding decisions tonight





# Questions & Discussion