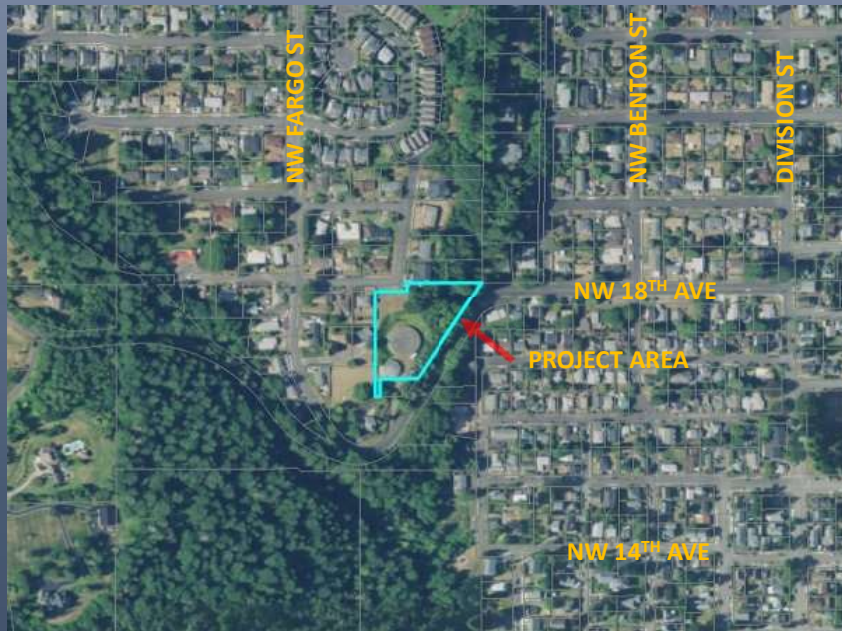


# LOWER PRUNE HILL BOOSTER PUMP STATION RECONSTRUCTION CITY COUNCIL WORKSHOP MAY 3, 2021



## PROJECT SUMMARY



VICINITY MAP



SITE MAP

1. Lower Prune Hill Booster Pump Station (BPS) requires replacement per the Water System Plan
2. The current project budget of \$2.32M will need to be supplemented to pay for a new BPS
3. Space limitations and steep terrain limit possible locations for a new BPS
4. 0.5 MG reservoir is also in poor condition and is scheduled to be replaced soon
5. There are benefits in reconstructing the 0.5 MG reservoir concurrently with the BPS

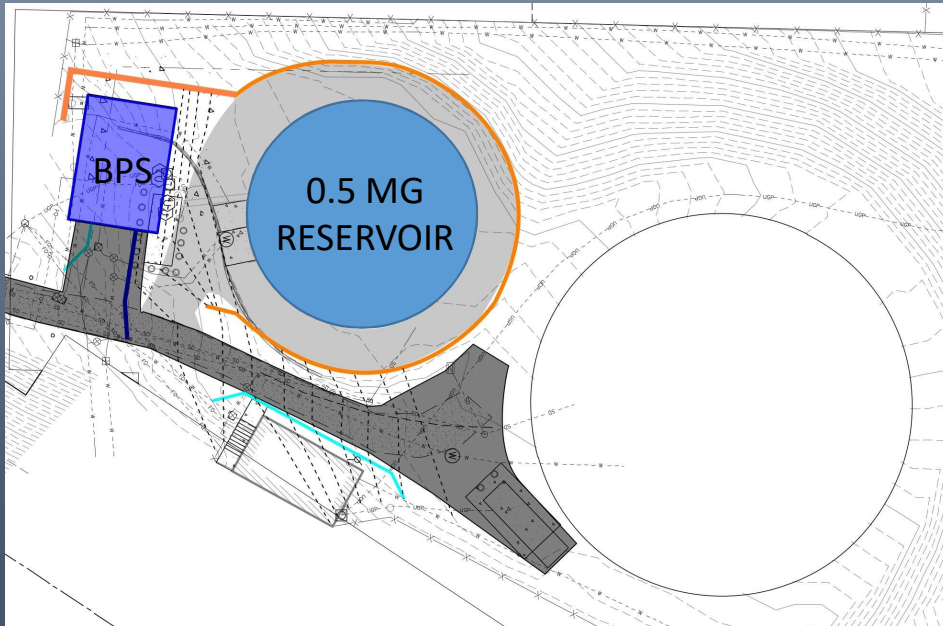


**0.5 MG RESERVOIR**



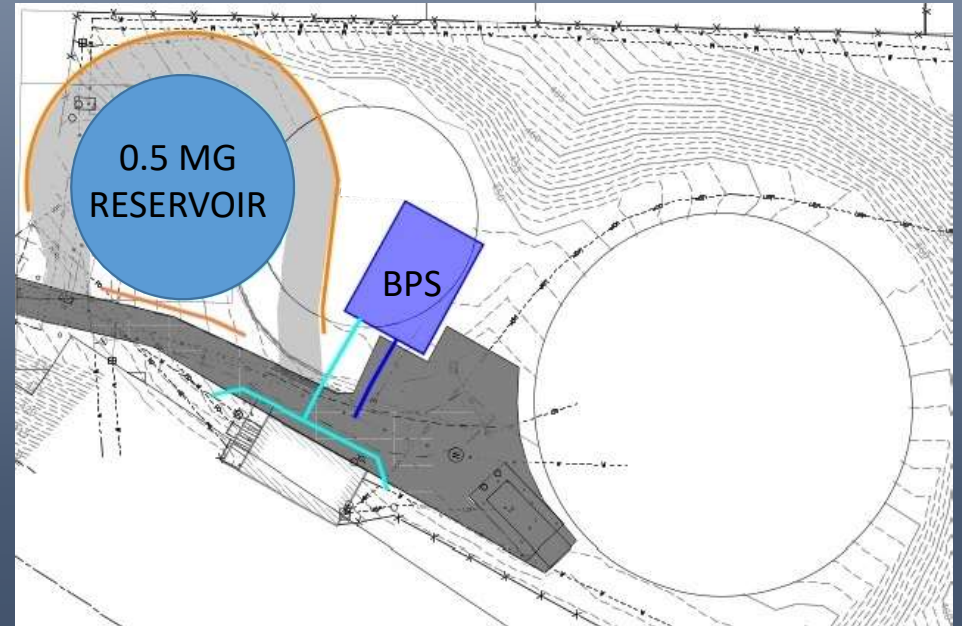
**BOOSTER PUMP STATION**

## SITE LAYOUT OPTIONS



**LAYOUT 1**

**MAINTAIN EXISTING LOCATION OF 0.5 MG RESERVOIR**



**LAYOUT 2**

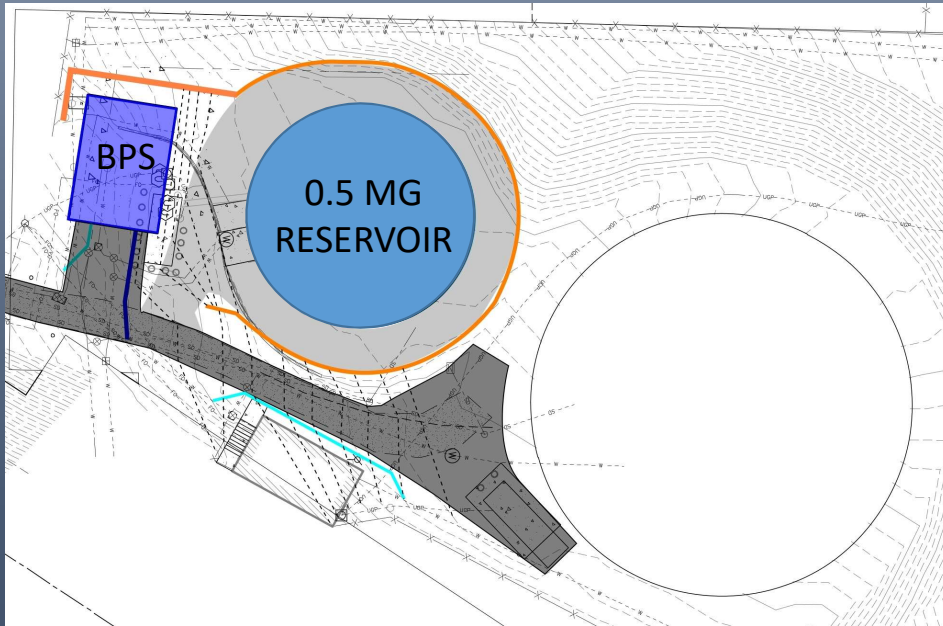
**RELOCATE EXISTING 0.5 MG RESERVOIR**

### **CONSIDERATIONS:**

1. Layout 2 provides easier vehicular access to the BPS
2. Layout 2 allows more flexibility in building size and configuration
3. Total cost of Layout 2 is significantly less than Layout 1

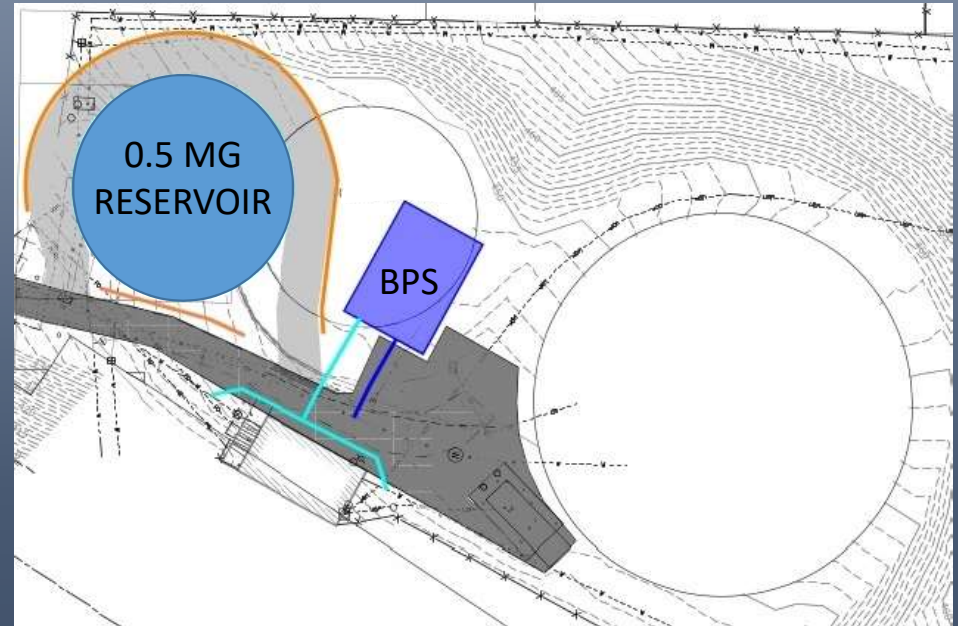
**LAYOUT 2 IS THE PREFERRED OPTION**

## PHASING OPTIONS / COST SUMMARY



**LAYOUT 1**

**MAINTAIN EXISTING LOCATION OF 0.5 MG RESERVOIR**



**LAYOUT 2**

**RELOCATE EXISTING 0.5 MG RESERVOIR**

| LAYOUT    | SCOPE NOW                     | FUTURE SCOPE          | COST NOW    | FUTURE COSTS | TOTAL COST         | NOTES                   |
|-----------|-------------------------------|-----------------------|-------------|--------------|--------------------|-------------------------|
| <b>1A</b> | Reconstruct BPS and Reservoir | None                  | \$8,043,000 | \$0          | <b>\$8,043,000</b> |                         |
| <b>1B</b> | Reconstruct BPS               | Reconstruct Reservoir | \$4,012,000 | \$4,736,000  | <b>\$8,748,000</b> |                         |
| <b>2A</b> | Reconstruct BPS and Reservoir | None                  | \$7,831,000 | \$0          | <b>\$7,831,000</b> | <b>PREFERRED OPTION</b> |
| <b>2B</b> | Reconstruct BPS               | Reconstruct Reservoir | \$4,012,000 | \$4,352,000  | <b>\$8,364,000</b> |                         |

## PREFERRED OPTION

OPTION 2A: RELOCATE AND RECONSTRUCT EXISTING 0.5 MG RESERVOIR  
CONCURRENTLY WITH BPS RECONSTRUCTION

## FUNDING ANALYSIS

BUDGETED FUNDING: \$2.32M

SOURCE: WATER FUND

TOTAL FUNDING NEEDED: \$7.83M

TOTAL FUNDING INCREASE: \$5.51M

SOURCE: WATER FUND

