

Lacamas Watershed Council

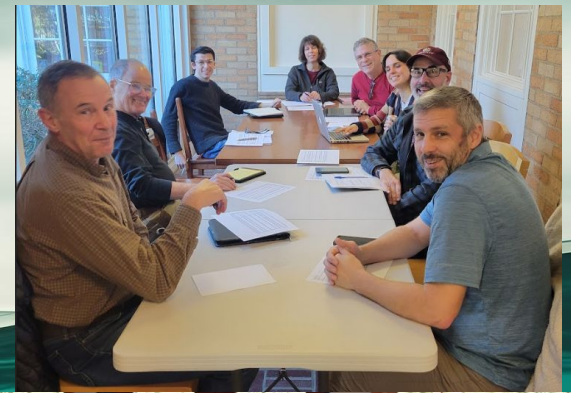
www.lacamaswatershed.org

Serving Our Community Since 2020



What Is the Lacamas Watershed Council (LWC)?

- Registered 501C3 nonprofit
- Apolitical advocacy group
- Focused on Lacamas Watershed in Clark County
- Governed by a Board of Directors
- Formed in 2020 by citizens concerned with increasingly toxic lakes
- Staffed with dedicated citizens passionate about our lakes



Who Are We?

- Judit Lorincz - Visionary Founder and President
- Tim Greseth - Executive Director/Oregon Wildlife Foundation
- Rodger Hauge - Retired Science Professor from Eastern Washington Univ.
- Vicky Wesling - Retired US Forest Service Fire Management
- Glen DeWillie - Retired Engineer/Clark County Clean Water Commissioner
- Ty Cobb - Healthcare Sales Manager/Zones
- Terris Becker - Data Analyst/Motive
- Ryon Edwards - Water Quality Scientist
- Kevin McCarthy - Senior Environmental Consultant/Antea Group
- Rainy Rau - Watershed Educator/Water Resources Education Center



Our Vision



- Safe Streams and Lakes for Wildlife and Visitors
- Long-Term Healthy Watershed
- Effective Long-Term Lake Quality Management with Robust Partnerships



Accomplishments



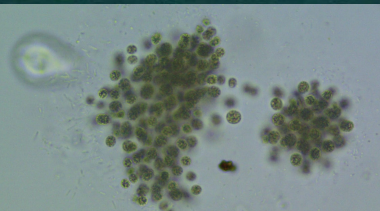
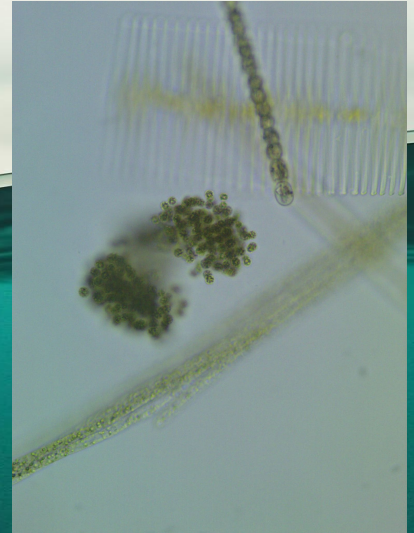
- Conducting weekly water testing aligned with NOAA's Phytoplankton Monitoring Network QAPP
- Entered a partnership with Infin8 Labs for automated data collection and analysis at the Goodwin Road site
- Drafted our first Quality Assurance Project Plan (QAPP) for an Aquatic Plant survey
- Secured grant fundings and private donations
- Initiated our first aquatic plant survey this year
- Wrapping up our second year of midlake water sampling
- Sharing data with the public via Fieldscope: <https://lacamas.fieldscope.org>
- Planning for continued growth and future actions



Support Services We Are Providing



- Goodwin Road sensor data
- Midlake data
- Aquatic plant survey data
- Phytoplankton Monitoring Network (weekly water testing) data
- Volunteers for lake related events



Key Issues



- Inadequate Water Quality Warning System
- Slow Process to Confirm Toxic Blooms
- Lack of Education About Harmful Algal Bloom (HAB) health effects
- Lack of Leadership in Communication Between Stakeholders.
- Misinformation on Social Media

July 22 at 3:08 PM

Update on the Lacamas Lake algae situation. Many people love paddling Lacamas including myself. And now with the water lilies in full bloom, its a beautiful time to go. While at the same time there have been recent reports of algae blooms. Unfortunately, the information being published is super vague and only makes people paranoid to paddle. So, in speaking with a local business owner of Sweetwater Paddle, I received more detailed information regarding the algae. She has spoken with the city and monitors the situation very closely since it relates to her business.

Basically, the only place where algae was found to have elevated levels was the small cove of stagnant water next to parking lot where most don't paddle. This is not the main lake or near the boat ramps. It's also not Round Lake. With all the Fear, Uncertainty and Doubt (FUD) surrounding algae, the city and county really need to do a better job at communicating these details to the general public. But I've found over the years that they are very poor communicators. That includes any information about their testing methods, where water samples were taken, etc... So, it just feeds into everyone's fears as a result. Lastly, the City has just completed treating the lake for algae. As a result, it should be better than ever to paddle. So, don't let all the FUD stop you from enjoying a nice paddle on the lake. 😊



Our Requests

Let's Work Together To:

- Improve Public Safety Messaging
- Formalize a Data Sharing Agreement
- Collaborate on Long-Term Water Quality Improvement
- Assistance and Support for a for Phosphorus Removal Demonstration Project
- Collaborate to Leverage Our Nonprofit Status to Maximize Funding Opportunities



Thank you



LWC
website



LWC
Fieldscope data

Info@lacamaswatershed.org

