

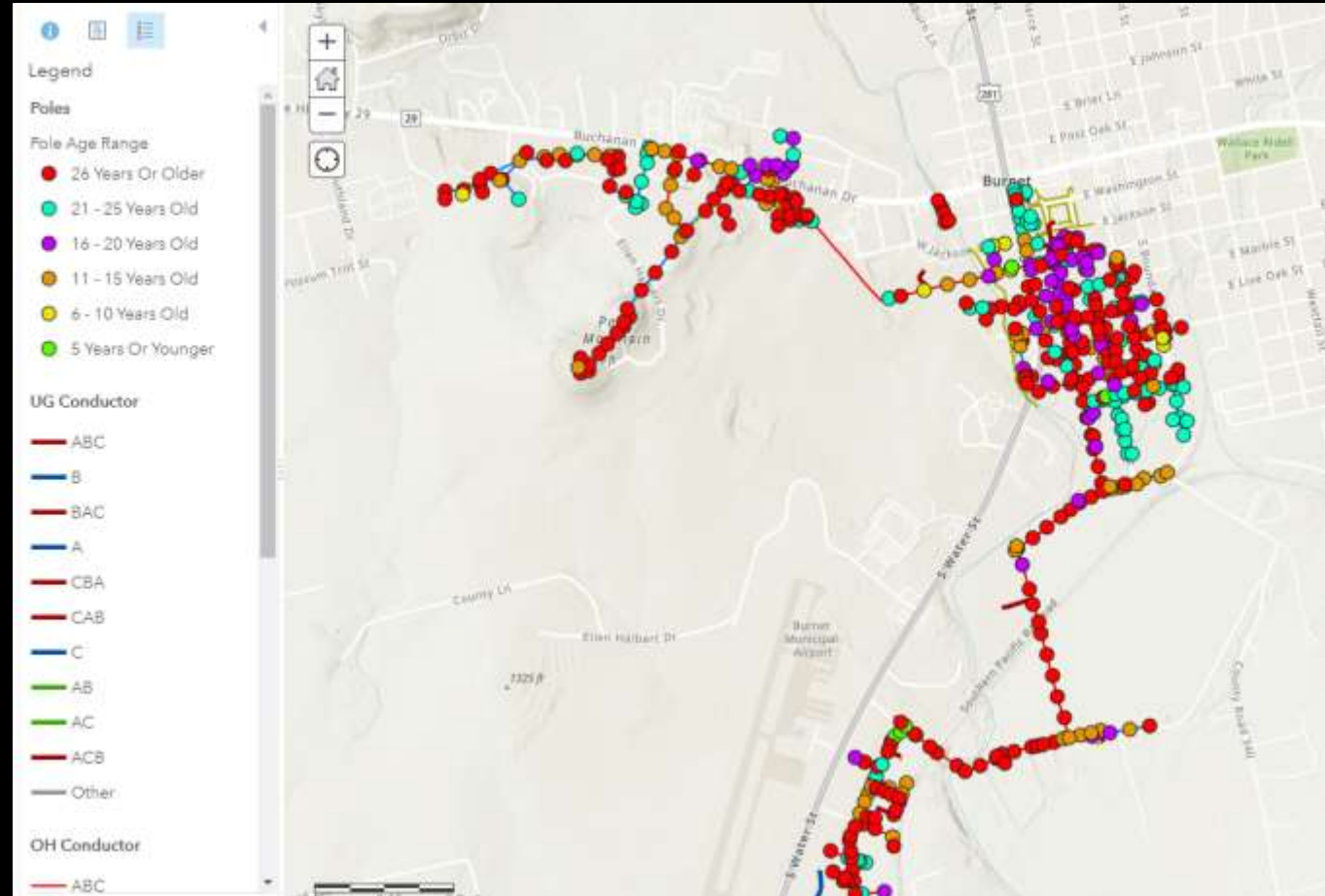
The background of the slide is a grayscale image of a circuit board. It features a complex network of black lines representing traces and several large black circular pads. A dark, semi-transparent horizontal band runs across the middle of the image, serving as a background for the text.

Electric Grid Survey Ph-2

Survey of BU300 & BU400

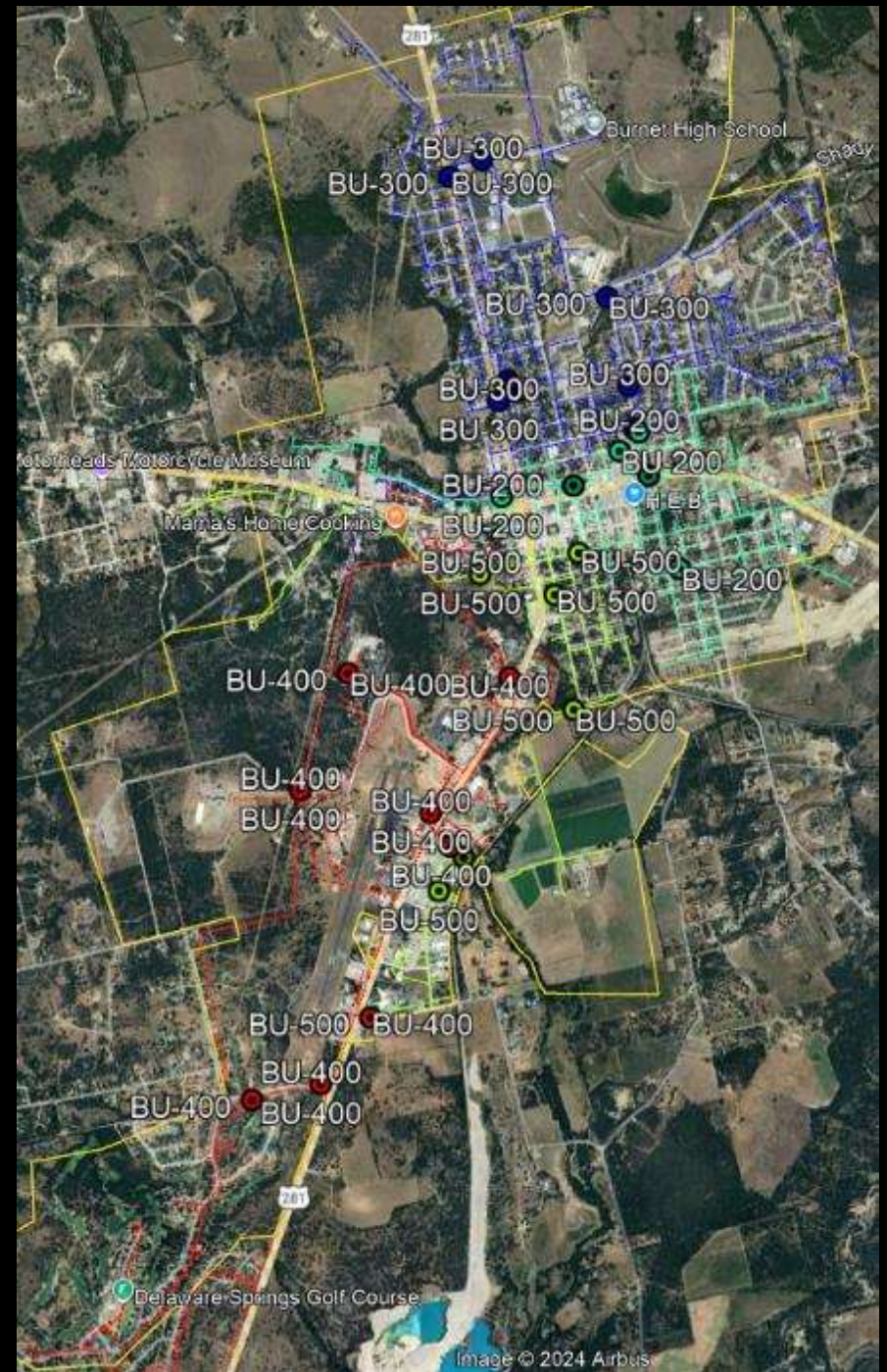
Current/Previous Projects

- Previous BU500 Survey: \$33,360
- Currently Underway BU200 Survey: \$37,520



Proposed Project

- McCord Engineering
- BU300 Survey: \$59,850. This is the north of town area
- BU400 Survey: \$44,500. This is the airport/Delaware area
- Other expenses \$5K



Approval

- Project is in the proposed budget at \$110K
- Staff recommends the approval of the service agreement with McCord Engineering and associated costs for a not to exceed amount of \$110,000 to complete the electric survey for the remaining electric feeders as presented

Feeder	Completed	Proposed
BU500	\$33,360	-
BU200	\$37,520	-
BU300	-	\$59,850
BU400	-	\$44,500
	TOTAL	\$104,350