

# Library Services Update

November 2025 to April 2026

Library Advisory Board

May 26, 2026



# Program Highlights



Children's Art Day: 105  
(3 sessions)



Play & Learn Workshop: 130  
(3 sessions)



Stories & Snacks: 71  
(3 sessions)

# Program Highlights



Teen Lounge: 113  
(11 sessions)



Christmas at the Library: 650



Great Giveback: 450

# Program Highlights



Assisted 377 individuals with tax returns



Heart Paper Chains: 60

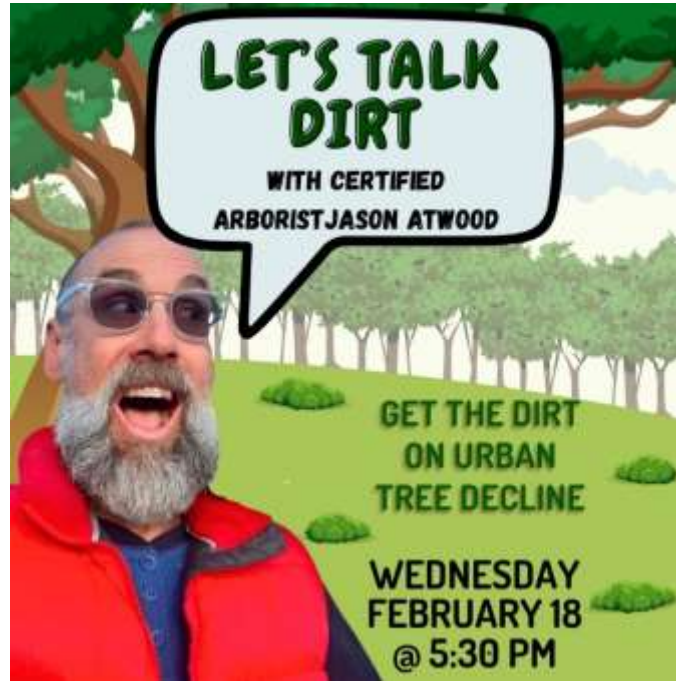


Ladybugs Program with the Texas Master Naturalists: 27

# Program Highlights



Roadway and Railway  
Playday: 44



Let's Talk Dirt: 18



Book Swap: 56

# Program Highlights



Active Adventures: 126  
(3 sessions)



Family Movie Day: 50  
(2 sessions)



Good Guy Critters with the  
Texas Master Naturalists: 23

# Program Highlights



Mommy & Me Yoga: 32  
(2 sessions)



Pi-Day Pi-K @ the BRiCk: 98



Fairy Houses Craft: 74

# Program Highlights



Project Prom: 100



Cliburn Kids On the Road: 86



Pressed Flower Bookmark  
Craft: 31

# Program Highlights



Craft Supply Swap: 150



Teddy Bear Clinic with Ally  
Medical: 80  
(2 sessions)



Teen Snack Attack: 40  
(3 sessions)

# Program Highlights



Hill College Dual Credit for  
Homeschoolers: 31



Baby Day: 54



# Program Highlights



Family Learning Workshop  
with KERA Kids: 38



Native Plants in Suburban  
Landscapes: 21



Teen Trashion Show: 18

# Program Partners

- Friends of the Burleson Public Library
- Keep Burleson Beautiful
- Texas Health Resources
- Johnson County Texas Hunger Coalition
- Catholic Charities
- Meals on Wheels
- Family Crisis Center of Johnson County
- Court Appointed Special Advocates for Children (CASA)
- Kindred Montessori Academy
- Lions Club
- AARP
- Station 330
- Kerr Middle School
- Rio Bravos Chapter: Texas Master Naturalists
- The Cliburn
- Ally Medical
- Hill College
- Love Pediatric Physical Therapy
- First3Years
- Burleson Parks & Recreation
- Help Me Grow North Texas
- FIT4MOM Burleson
- KERA
- Tarrant Regional Water District
- Goodwill
- Association of Late Deafened Adults
- National Alliance on Mental Illness (NAMI)



# Storytimes



Average attendance

Baby: 43  
Toddler: 70  
Preschool: 43  
Evening: 19  
Saturday: 51  
Inclusive: 7



# Community Events & Outreach



Senior Center Fall Festival



Auberge Apartments  
Crestmoor Park Apartments



Burleson BISD Friends  
Festival

# Community Events & Outreach



CityFest



Elk Creek Memory Care Book Club



Springfest @ Q&A Preschools

# Community Events & Outreach



Earth Day



National Picnic Day @ Russell Farm



Light Up the Night with the Center for ASD @ the BRiCk

# Community Events & Outreach



Onsite community resource tables:  
Goodwill Digital Literacy  
Voter Registration

Senior Outreach Summary:  
Mustang Creek Estates  
Avir at Burleson  
Residence at Alsbury  
Wilshire by Abby  
Elk Creek Assisted Living

1,292 items delivered from  
November to April

# City of Burleson 2025 Employee of the Year

Wendy joined the library in December 2022 as a Youth Services Librarian. She was nominated for her leadership, initiative and commitment to supporting local youth.

Wendy's empathy and service-focused approach reflect the highest standards of our organization. She was honored at the January 5, 2026 city council meeting.



**CORE VALUE:  
EMPATHY**



# Feel Good Friday

The library was featured in the November 28 City e-newsletter for a new initiative with Harvest House.

Staff set up a community coat swap to help neighbors in need stay warm.



**CORE VALUE:  
EMPATHY**



**CORE VALUE:  
COLLABORATION**



This season, the Burleson Public Library is turning generosity into warmth through a unique partnership with Harvest House.

From now through December 6, the library is hosting a community coat swap — a simple “take a coat, leave a coat” setup to help neighbors in need stay warm this winter.

New or gently used coats of all sizes are welcome, and anyone who needs one is invited to stop by and take what they need — no questions asked. The coat rack is located just outside the front entrance of the Burleson Public Library for easy access.

It's a small gesture with a big impact, and just one more way Burleson continues to show up for one another. Thank you to everyone helping spread warmth and kindness across our community.

# 2025 Achievement of Excellence in Libraries Award

This prestigious award is given to libraries by the Texas Municipal Library Directors Association (TMLDA), an affiliate of the Texas Municipal League. The award recognizes excellence in ten key service areas, including community outreach, literacy support, workforce development, and innovative programming.

The award reflects the library's work in areas such as literacy support through Summer Reading, Storytimes, VOX Books, and reading challenges; digital inclusion through public computers, Wi-Fi hotspots, mobile printing, and one-on-one technology assistance; workforce development through job search support, online tutoring, and business research tools; and community outreach through the Reading Rover, inclusive programming, cultural celebrations, and partnerships with schools, city departments, and local organizations.



# Dollar General Literacy Foundation: Grant Submitted

Library staff submitted a \$1,500 grant application to Dollar General in support of the library's Summer Reading Club.

If awarded, the grant will provide additional resources and enhancements for children's programming during the summer reading season.

Award notifications: May 2026



# Grant Applications Submitted

## **Texas Library Association Summer at the Library Grant funded by HEB**

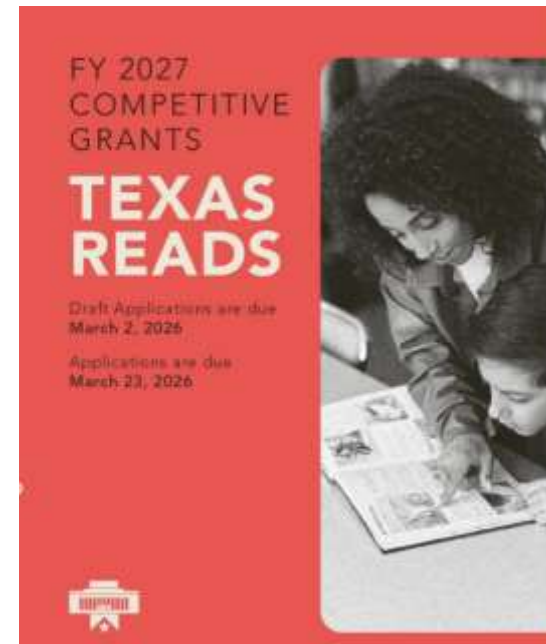
\$1,200 requested to support Summer Reading Club programs

Award notifications: May 2026

## **Texas Reads Grant**

\$9,021 requested to replace the StoryWalk® in the library garden with powder coated aluminum fixtures

Award notifications: June 2026



# Grant Application Submitted



## Texas Book Festival Grant

\$2,500 requested to expand our juvenile nonfiction collection, focusing on high-demand topics such as science and STEM, animals, dinosaurs, health and anatomy, pets, and sports.

# MetroShare Libraries: Staff Development

Staff from Burleson and 10 other libraries in the MetroShare Libraries consortium attended training January 12 and 13.

Training was hosted at the new Saginaw Public Library and included basic & intermediate circulation, cataloging and reports.



# Youth Services Storage Reorganization



In an effort to make the most out of our space, the Youth Services storage closets were reorganized.

BTX Facilities assisted by removing some built-in cabinets and drawers.

# New: Laptop Checkout

The library now offers in-house laptop checkouts for adult cardholders.

- 2-hour checkout
- Up to two renewals, if no one's waiting
- Free with your library card
- Perfect for job applications, homework, remote work, and more

We're excited to offer another way to support digital access in our community.



# Personal Care Donation Drive

From April 1–15, library staff organized a donation drive to collect personal care items for members of our unhoused community. This initiative was inspired by a staff member who recognized a local need and took action to address it.

Donated items were distributed to Blessing Boxes throughout Burleson, providing immediate, no-barrier access to essential supplies for those in need.

THE CITY OF  
**BURLESON**  
TEXAS Library

**PERSONAL CARE DONATION DRIVE**  
\*Benefiting Our Unhoused Community\*

April 1 - 15

**What We're Accepting:**

- Soap/Body Wash
- Shampoo/Dry Shampoo
- Toothpaste/Toothbrush
- Deodorant
- Feminine Hygiene Products
- Wet Wipes
- Sunscreen
- Lotion
- Lip balm

\*Drop off at the library during business hours\*

**ALL ITEMS SHOULD BE NEW AND TRAVEL SIZED.**



# Friends of the Library Fundraiser

The Friends of the Burleson Public Library are raising funds to replace 30-year-old picture book shelving with modern, child-friendly browsing bins designed specifically for young readers.

These bins will:

- Make it easier for young readers to find books they're excited about
- Encourage early literacy and independent book selection
- Create a more welcoming and engaging children's area
- Help families quickly browse popular picture books
- Improve access for children of all abilities, including those who may struggle with traditional shelving

In 2025 picture books circulated over 19,000 times, showing how heavily this collection is used by families.

This project is included in the library's strategic plan to strengthen access to collections, and it was a recommendation from the 2023 library needs assessment.



# Supplemental Budget Request

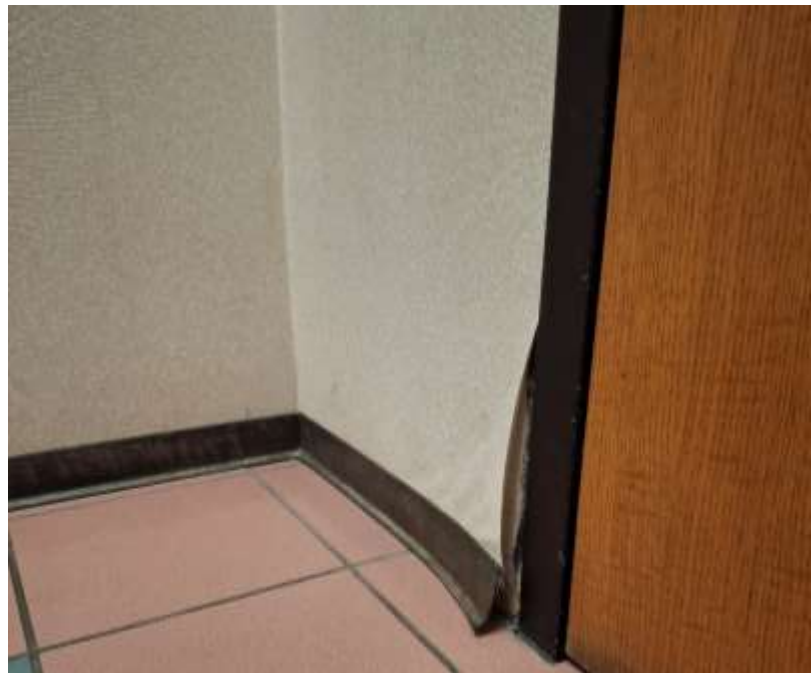
The library's FY2027 budget package includes a request to remodel the public restrooms and front hallway. After 30 years of continuous use, these areas show significant wear.

- Restroom finishes are outdated
- Floor tiles have a high-gloss finish that has raised privacy concerns in restroom stalls
- Lighting is inadequate
- Doors have accumulated wear and staining from hand contact over time
- Wallpaper is peeling, torn, or missing in areas
- Cove base is damaged or detached in multiple locations

The proposed project includes new bathroom tile, lighting, mirrors, stalls and doors while existing sinks, toilets and urinals will remain in place. In the hallway, wallpaper will be removed, the walls textured and painted, and cove base replaced. Existing hallway floor tile will remain unchanged to minimize costs.

To ensure continued service during construction, the City's portable restroom trailer will be placed in the library parking lot for patron use.

This project is included in the library's strategic plan to maximize use of the existing facility.

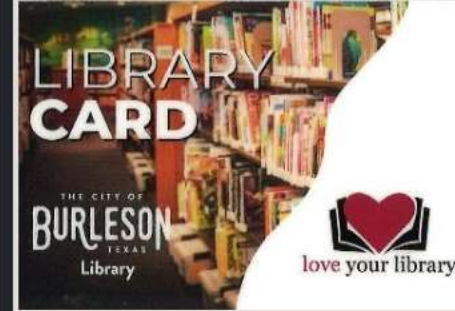




YTD totals  
through  
Apr



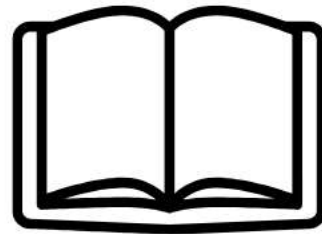
**94,600**  
digital downloads +7%



**2,812**  
cards issued +4%

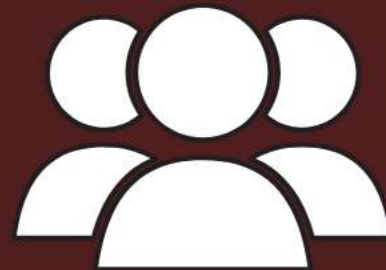
**17,141**

Wi-Fi sessions +51%



**230,544**  
physical items checked out -2%

**226,877**  
visitors +7%



**30,833**  
attended programs +10%

# Questions/Comments

Sara Miller

Deputy Director-Library

[smiller@burlesontx.com](mailto:smiller@burlesontx.com)

817-426-9203