

Burleson Office of Emergency Management

JOE LASTER

EMERGENCY OPERATIONS
MANAGER





What is Emergency Management?

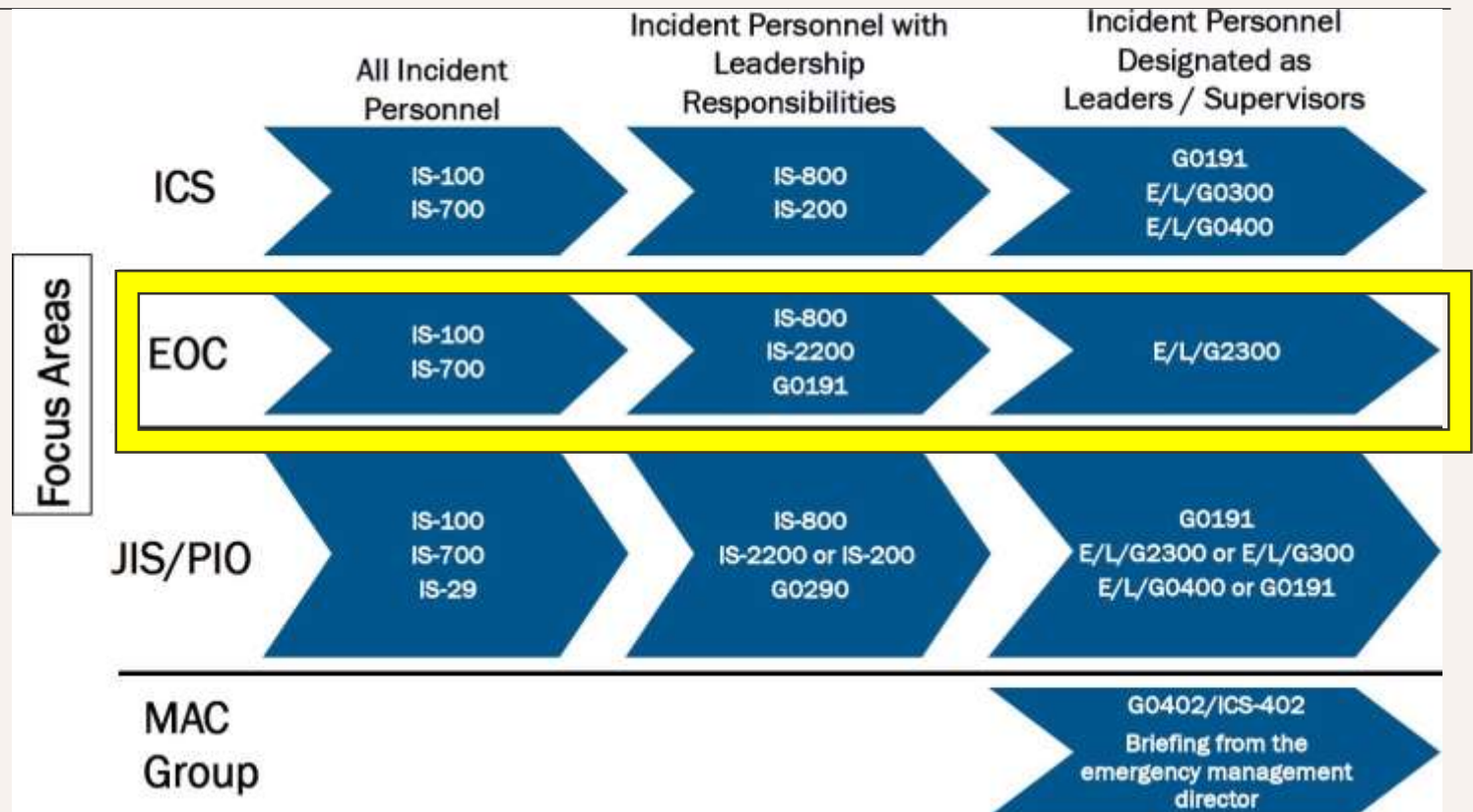
Emergency management or disaster management is the managerial function charged with creating the framework within which communities reduce vulnerability to hazards and cope with disasters.

A photograph of a fire station interior, featuring a large white hose reel in the foreground, a red fire extinguisher on the wall, and a red fire truck in the background. The scene is dimly lit with a warm, reddish-orange color cast.

Emergency Operation Center

EOC Team

- 24 Staff From Various Departments
- National Incident Management System (NIMS) Compliant
 - The goal of Burleson's implementation of NIMS is to ensure that all response partners can work together seamlessly during an event. In accordance with federal guidelines, NIMS compliance is required for all applicants for Homeland Security grants and Emergency Management Performance grants
- Independent Study Courses- By August 2023
- E/L/G 300 & 400- August 2023
- Advanced Training
- Future EOC Exercises

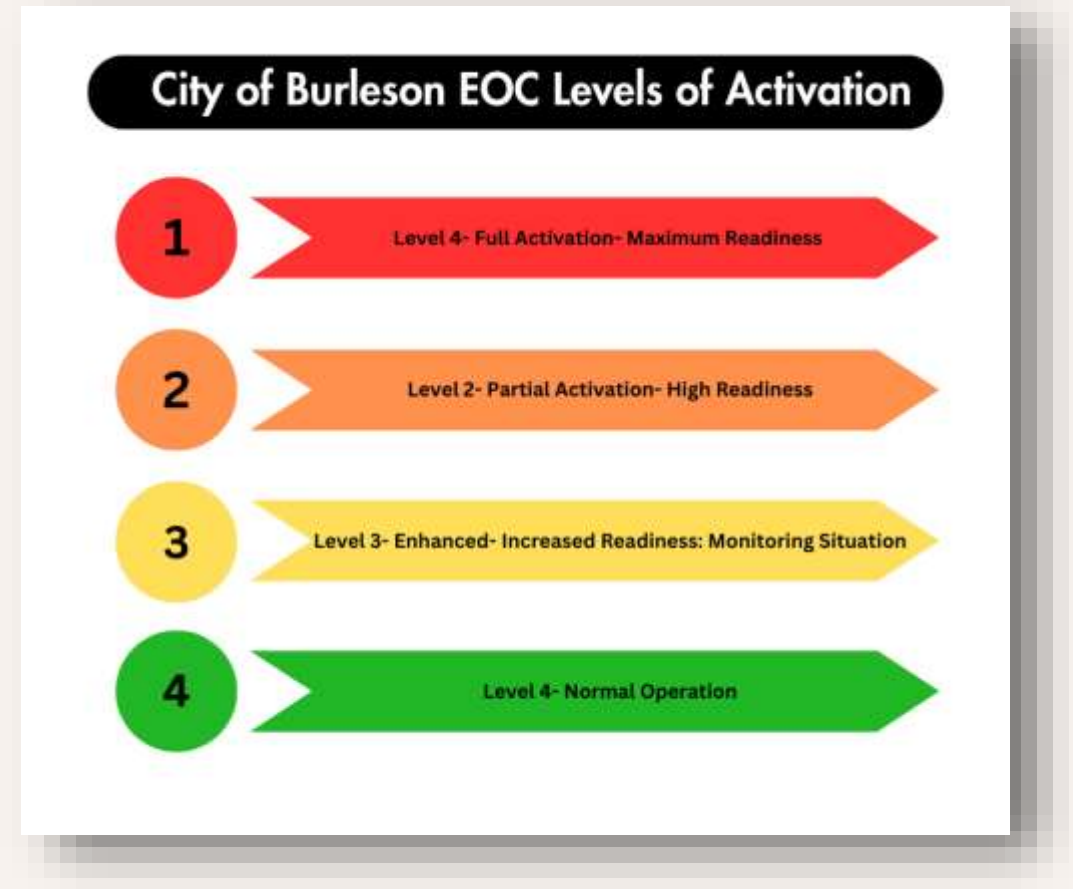


Key:

- Incident Command System (ICS)
- Emergency Operations Center (EOC)
- Joint Information System- Public Information Officer (JIS/PIO)
- Multi-Agency Coordination Group (MAC Group)
- (Mayor & Council/ Executive Leadership)

EOC Activation

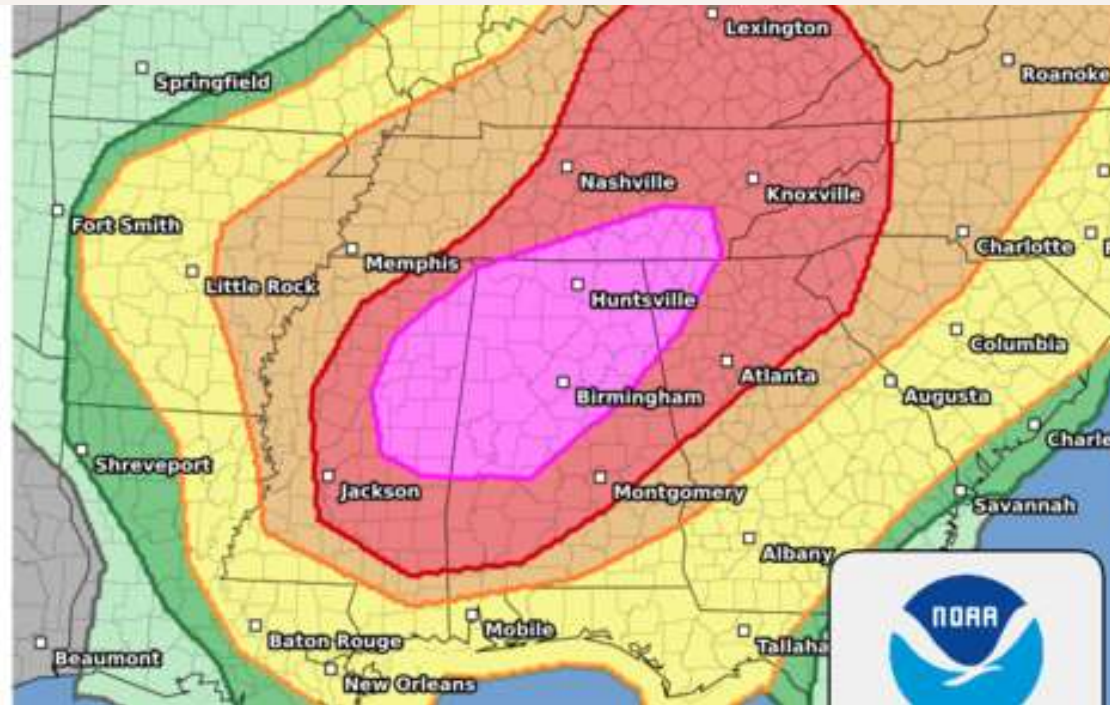
- Levels 4-1
 - Level 4- Normal Operations
 - Level 3- FD Staff
 - Level 2- Reps FD, PD, PW, IT, Comms
 - Level 1- Entire EOC Team
- Hub of Information
- Proactive Approach
- What We Activate for...
 - Weather
 - City Events
 - Disaster
 - Any Other Needs...





Emergency Operation Center (EOC)

- January 2023, Level 3 Activation- Winter Storm (Left)
- March 2023, Level 2 Activation- Severe Weather (Right)



Understanding Severe Thunderstorm Risk Categories

THUNDERSTORMS (no label)	1 - MARGINAL (MRGL)	2 - SLIGHT (SLGT)	3 - ENHANCED (ENH)	4 - MODERATE (MDT)	5 - HIGH (HIGH)
No severe* thunderstorms expected	Isolated severe thunderstorms possible	Scattered severe storms possible	Numerous severe storms possible	Widespread severe storms likely	Widespread severe storms expected
Lightning/flooding threats exist with all thunderstorms	Limited in duration and/or coverage and/or intensity	Short-lived and/or not widespread, isolated intense storms possible	More persistent and/or widespread, a few intense	Long-lived, widespread and intense	Long-lived, very widespread and particularly intense
					

* NWS defines a severe thunderstorm as measured wind gusts to at least 58 mph, and/or hail to at least one inch in diameter, and/or a tornado. All thunderstorm categories imply lightning and the potential for flooding. Categories are also tied to the probability of a severe weather event within 25 miles of your location.



National Weather Service

www.spc.noaa.gov

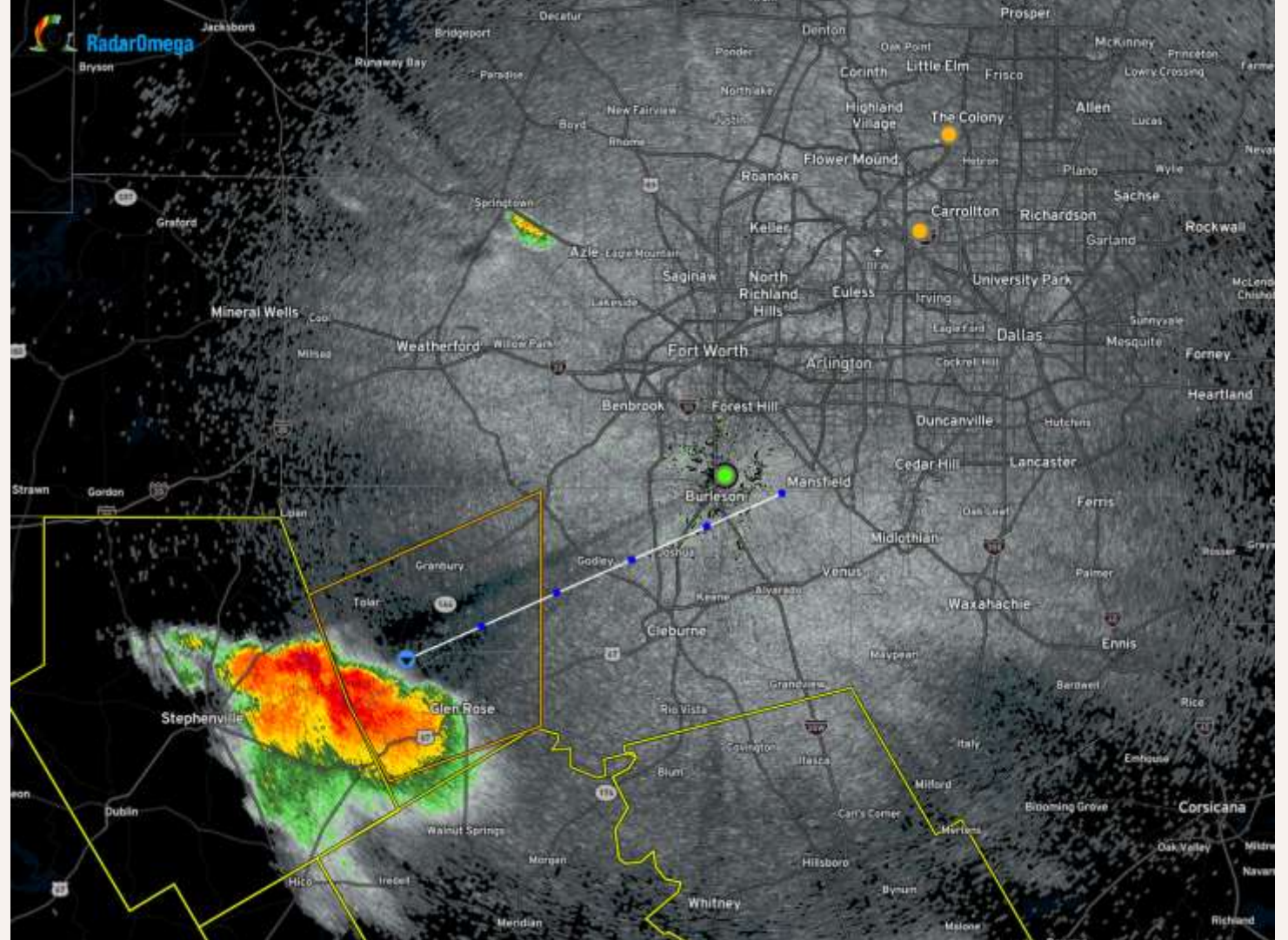


EOC Weather Monitoring

- Storm Prediction Center
- National Weather Service Chat
- Radar
- Team Members
- Amateur Radio Operators
- Colleagues
- Storm Chasers

How We Decide, An Example

- History of Storm
 - NWS Chat
 - Radar
- Watches and Warnings
- Texas Storm Chasers
- Consider Advanced Warning
 - Social Media
 - BTX Alert



Upgrade Outdoor Warning Sirens

- Increase OWS coverage
- Phased approach to replace all OWS and add additional.
- Ensure timely and accurate warnings for citizens.
- Public Outreach
 - Not "Tornado Sirens"



Event Action Plans

- Collaborating to create emergency action plans for large city events.
- Keeping public safety at the forefront of events.
- Includes following partners
 - Burleson Police
 - Burleson Fire/EMS
 - Burleson Parks & Rec
 - Public Works
 - Others as needed



Community Outreach

- City Events

- Promote Preparedness

- Educate on BTX Alerts
 - Educate on OWS

- Emergency Preparedness Classes

- Pathway Church (Feb)
 - Thomas Square Apartments (April)
 - Mayor Youth Council (April)
 - Mariposa Apartments (May)
 - Chamber Luncheon (June)



Community Emergency Response Team

Next Class is August 25-27th
Available space for 20 attendees

BTX CERT
COMMUNITY EMERGENCY
RESPONSE TEAM
Free 3 day FEMA Training

Next Class August 25-27

**LEARN THE
FOLLOWING**

- ✓ First Aid
- ✓ Disaster Preparation
- ✓ Fire Safety & Utility Control
- ✓ Light Search & Rescue
- ✓ Team Organization
- ✓ Disaster Simulation

**CONTACT US FOR
MORE INFO**

817-426-9170
cert@burlesontx.com

Before, during, and after disasters, CERT volunteer teams perform basic response activities, including checking in on neighbors, distributing information to the public, supporting emergency operations centers, and helping to manage traffic and crowds.

24 Hour FEMA Based Course

- Disaster Preparedness
- Team Organization
- Light Search & Rescue
- Fire & Utility Safety
- Disaster Simulation

Celebrating Preparedness Month

CITY OF BURLESON OFFICE OF EMERGENCY MANAGEMENT PRESENTS

EMERGENCY PREPAREDNESS FAIR

#BTXPREPARED

SATURDAY SEPTEMBER 30, 2023
9 AM - 1 PM

PATHWAY CHURCH | 325 NW RENFRO ST, BURLESON, TX 76028

G-200 - Texas Public Officials Workshop 2023

(FKA- G 402) This 3-hour course is designed to introduce county judges and commissioners, mayors and city council members, and other elected and appointed officials to emergency management in Texas. This course addresses the legal authorities for emergency management in Texas, the local, state, and federal organization for emergency management, the local emergency management functions, the local responsibilities during the four phases of emergency management - mitigation, preparedness, response, and recovery, and the emergency management program activities, such as planning, training, and exercising.

Working with CSO to schedule.



Future Initiatives

- Youth Disaster Preparedness
- Tabletop Exercises for Staff
- EOC Team Training
- BTX Prepared
- CERT as a Fully Deployable Asset
- Continue to Improve EOC
- Continue to Build Partnerships



Questions?

Joe Laster

Emergency Operations Manager

817-455-1478

jlaster@burlesontx.com

