

# Chisholm Summit Annexation (Phase C)

## Location:

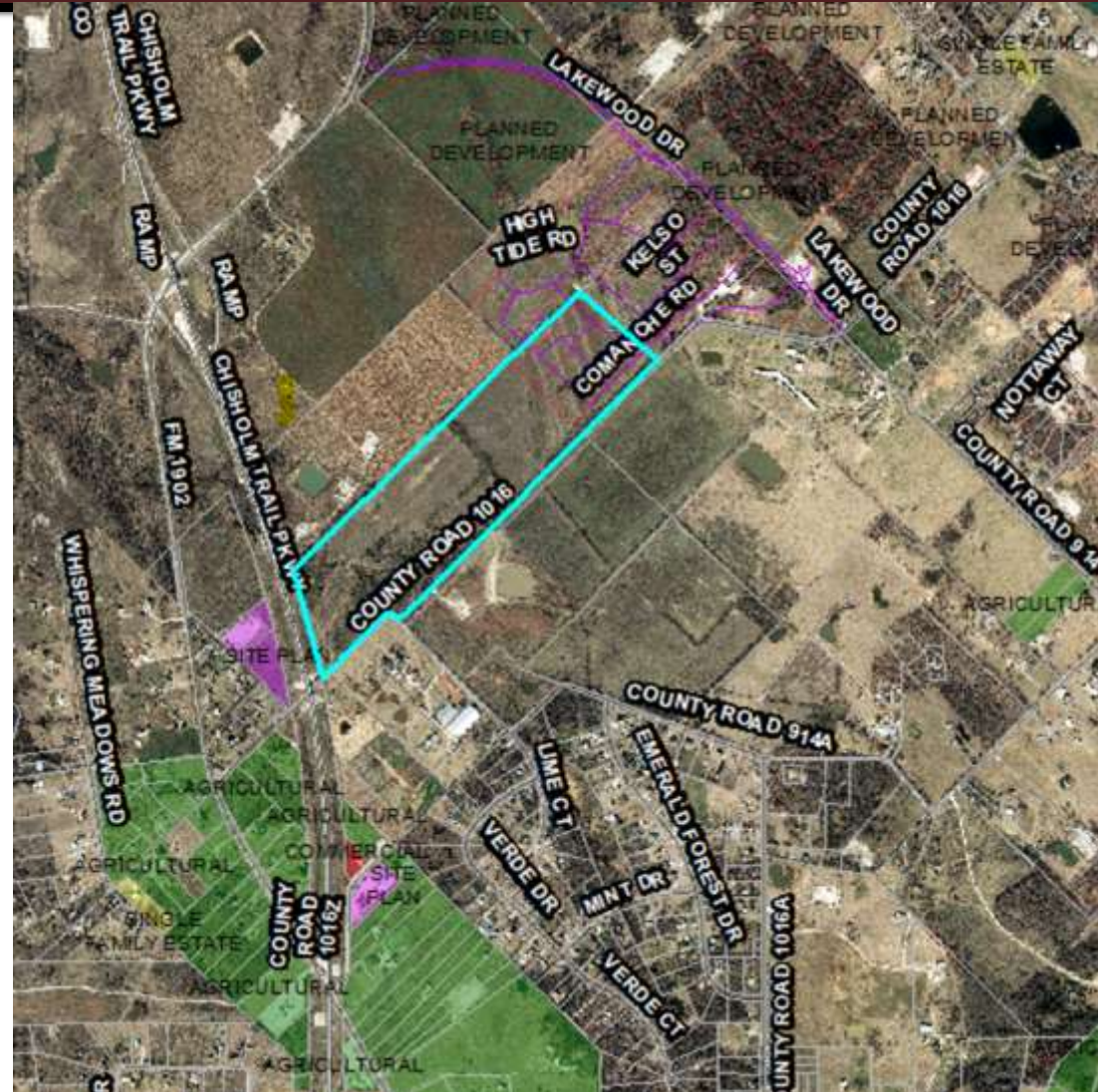
- 9325 CR 1016
- 88.140 acres

## Applicant:

Justin Bond (RA Development)  
Rocky Bransom

## Item for approval:

Annexation of Phase C- related to a previously approved development agreement (Case 24-343).



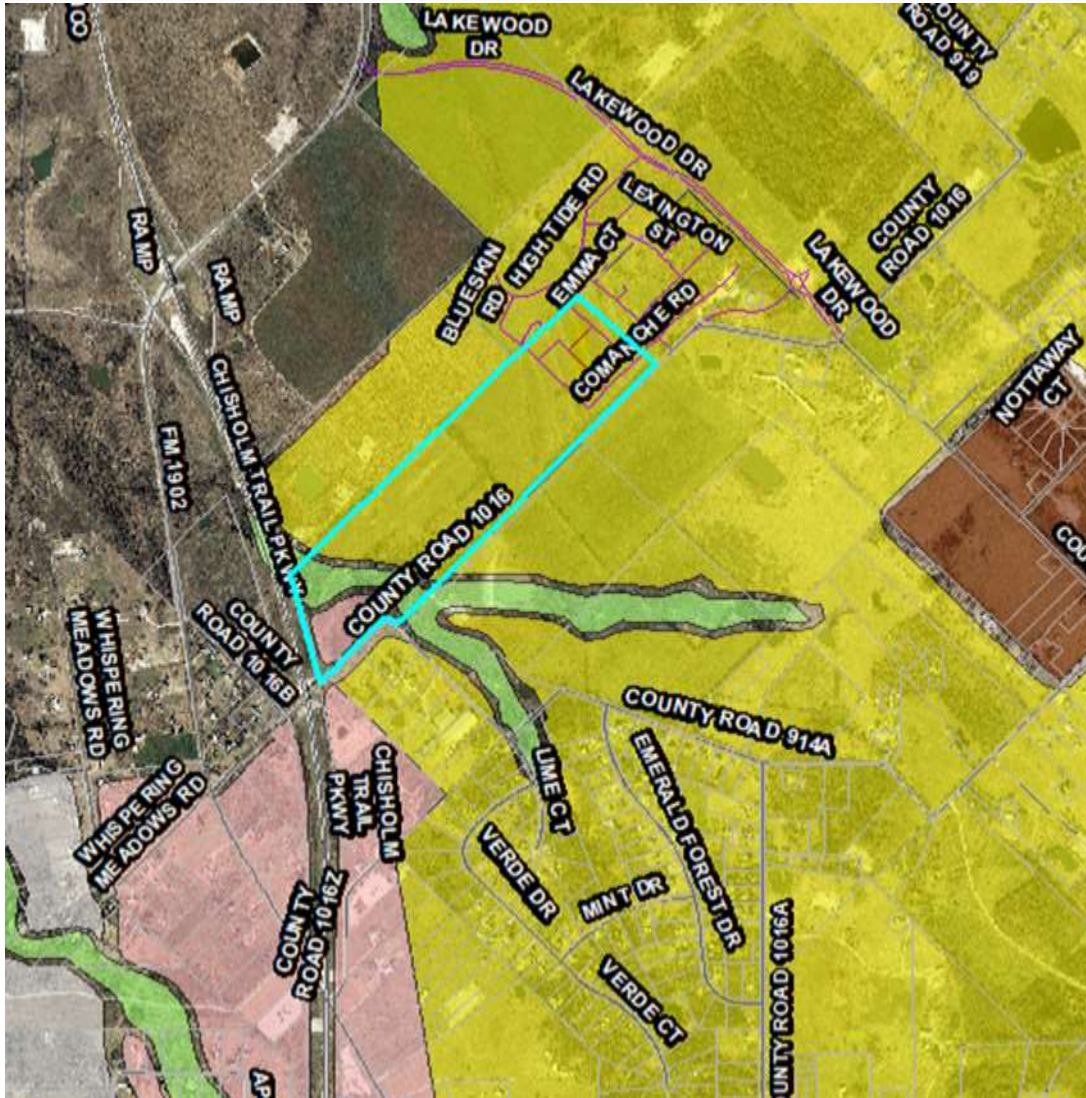






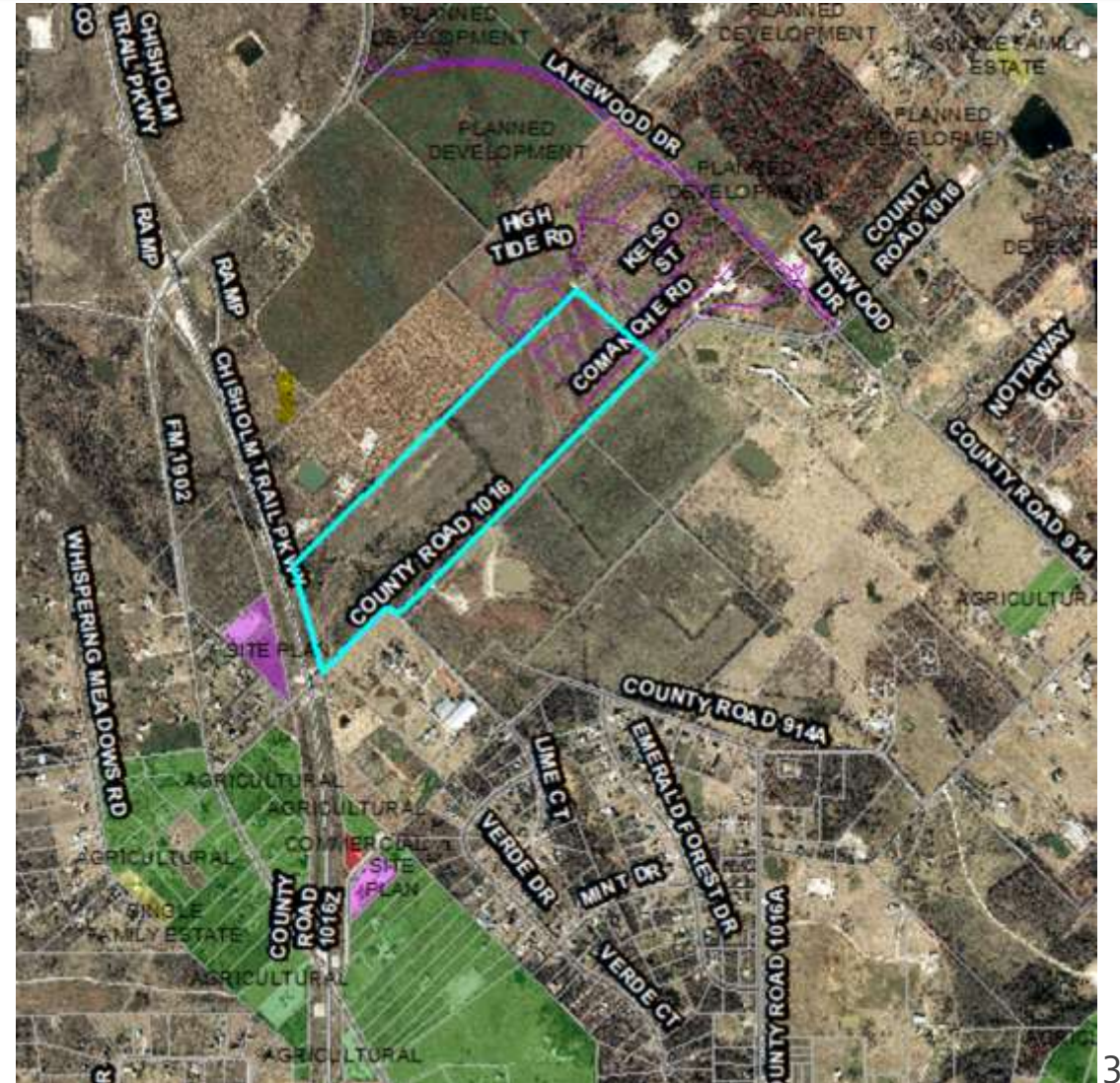
# Comprehensive Plan

## Neighborhoods



# Zoning

## ETJ

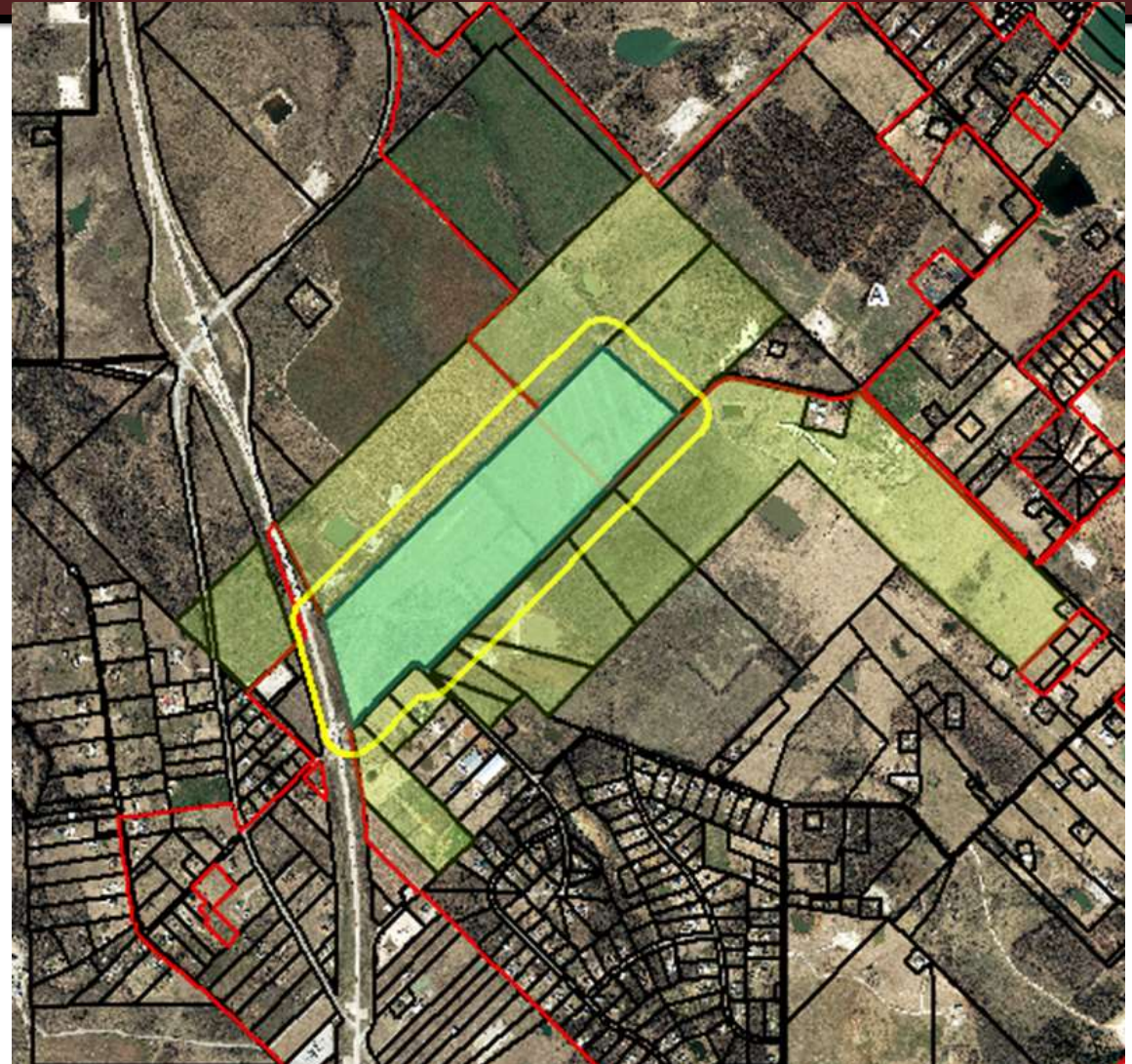




# Chisholm Summit Annexation (Phase C)

## Public Hearing Notice

- Published in newspaper
- Posted on City Website
- Notified school districts and sent utility letters for annexation.



# Chisholm Summit Annexation (Phase C)

## Staff's Recommendation

- Staff recommends approval of annexation of 88.130 acres for Chisholm Summit Phase C located at 9325 CR 1016.
- Proposed Planned Development furthers the goals and vision of the Comprehensive Plan
- Part of previously approved development agreements

