



Pickleball Pilot Courts

Parks Board - October 13, 2022

Staff Presenter: David Lopez

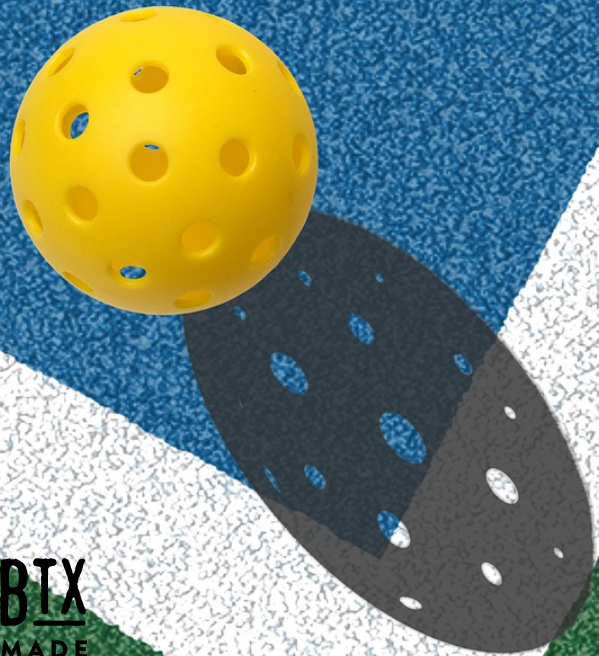
Overview

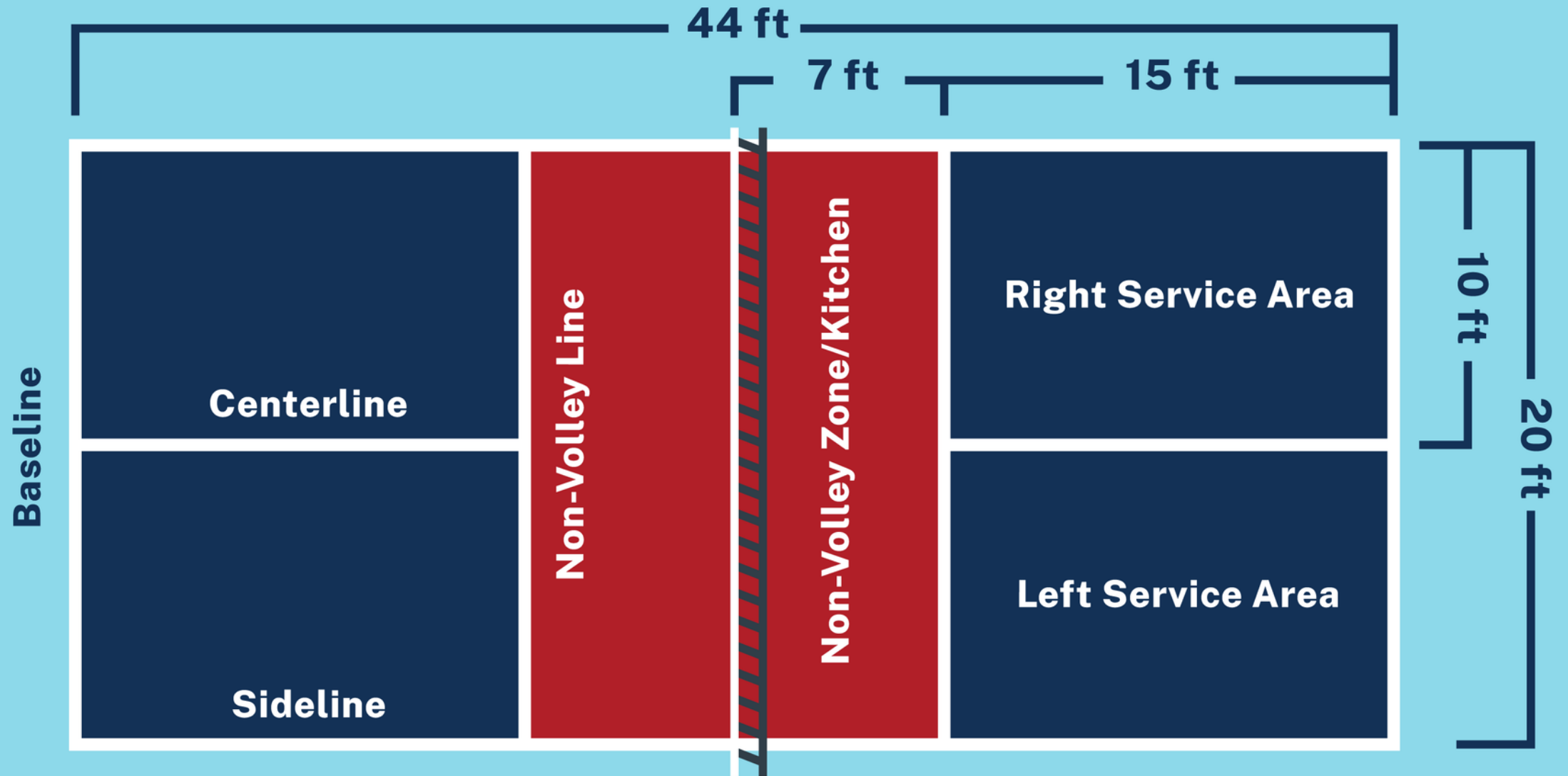
1. What is pickleball?
2. Current court locations in Burleson
3. Potential benefits of pickleball in parks
4. Proposed location for pilot courts
5. Details of pilot program
6. Fiscal impact
7. Timeline
8. Feedback and Recommendations



What is Pickleball?

- Highly social sport that combines elements of tennis, badminton, and ping-pong
- Played with a paddle and plastic ball with holes
- Played indoors and outdoors on a badminton-sized court with a slightly modified net
- Played as doubles or singles
- Can be played by all ages and skill levels





**Net Height at Sideline = 36 in
(34 in at Center)**



*Photo courtesy of [espn.com](https://www.espn.com)

BTX
MADE



*Photo courtesy of [therealdeal.com](https://www.therealdeal.com)

Current Pickleball Offerings in Burleson

Burleson Recreation Center

- Number of courts: 3
- Availability: Friday evenings
- Fee: included with Brick membership or \$30/mo. for non-members
- Indoor

Southern Oaks Country Club

- Number of courts: 6
- Availability: 4 courts daily, 2 courts 5 days per week
- Fee: \$5 day pass, \$25/mo. individual, \$45/mo. family
- Outdoor





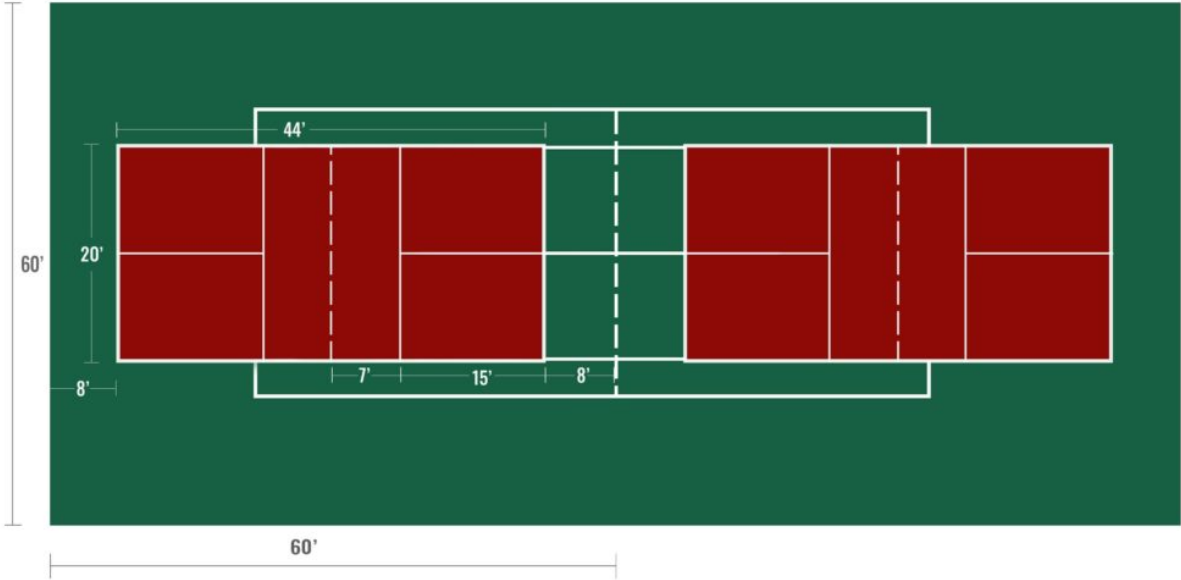
Benefits of Pickleball in Parks

- Promotes health and wellness benefits from participation
- Provides greater access to the sport (no fees)
- Pickleball Ambassadors offer free lessons and programs to help remove barriers to entry and grow the sport
- Increases positive programming in parks which enhances park safety

Proposed Pickleball Pilot Location: Warren Park

- Site features 2 tennis courts
- Courts are due for resurfacing but structurally intact
- Pickleball lines could be added during resurfacing to make one of the 2 tennis courts dual use at minimal extra cost
- Overlay of 1 tennis court could supply 2 pickleball courts
- Portable nets could be left on site for pickleball and easily moved aside when not in use
- Tennis can still be played on overlaid court
- If pickleball pilot is no longer desired, court overlay could be removed during next resurfacing or sooner (5 year average lifespan for surfacing)





Proposed Details of Pilot Program

- **Two-year pilot**

- Year 1 considered as reactionary period when excitement and change management is expected for new amenity
- Year 2 is a normalizing year when novelty is worn off and consistent trends emerge

- **Data to be collected through site-based surveys prior to pilot start and at the end of each year**

- **Feedback received through direct contact throughout duration of pilot will be documented**

- **Data collected will be used to help guide decisions for future program needs in Burleson**

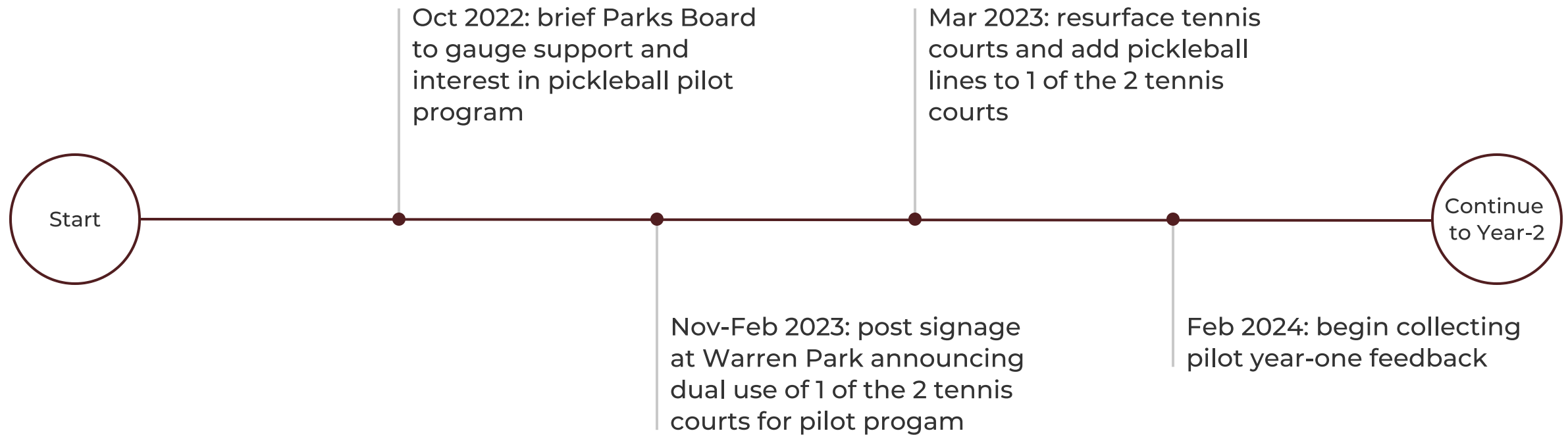


Estimated Fiscal Impact

- Pilot announcement signs: \$60.00
- Resurfacing: No additional charges beyond scheduled maintenance for tennis courts
- Adding pickleball lines to 1 court: \$500.00
- 2 Portable pickleball nets: \$800.00
- Pickleball etiquette sign: \$100.00
- Total: \$1,460.00

**Operational funding will be used for pilot program*

Timeline for Pilot Program Implementation



Options

Staff Recommendation



Recommend support of pickleball pilot program as presented.



Recommend support of pickleball pilot program with changes.



Recommend not moving forward with pickleball pilot program.

Questions, Answers and Feedback

