

Advance Funding Agreement (AFA) for Local Government Maintenance of Railroad Pavement Markings and Signs (Off-System)

April 21, 2025

LOCAL GOVERNMENT MAINTENANCE OF RAILROAD PAVEMENT MARKINGS AND SIGNS (OFF-SYSTEM)

- Texas Department of Transportation (TxDOT) has identified BNSF Railway and Union Pacific Railroad highway-rail grade crossings in the City of Burleson.
- TxDOT received Section 130 Federal funding for construction of projects that eliminate hazards of railway-highway crossings.
- TxDOT requesting approval of AFA to proceed with Project within the City of Burleson.

Project Locations

Alsbury Blvd between
Candler St. and Hulen St.

DOT 020664T



Project Locations

Commerce St. connector
between Wilshire Blvd and
Commerce St.

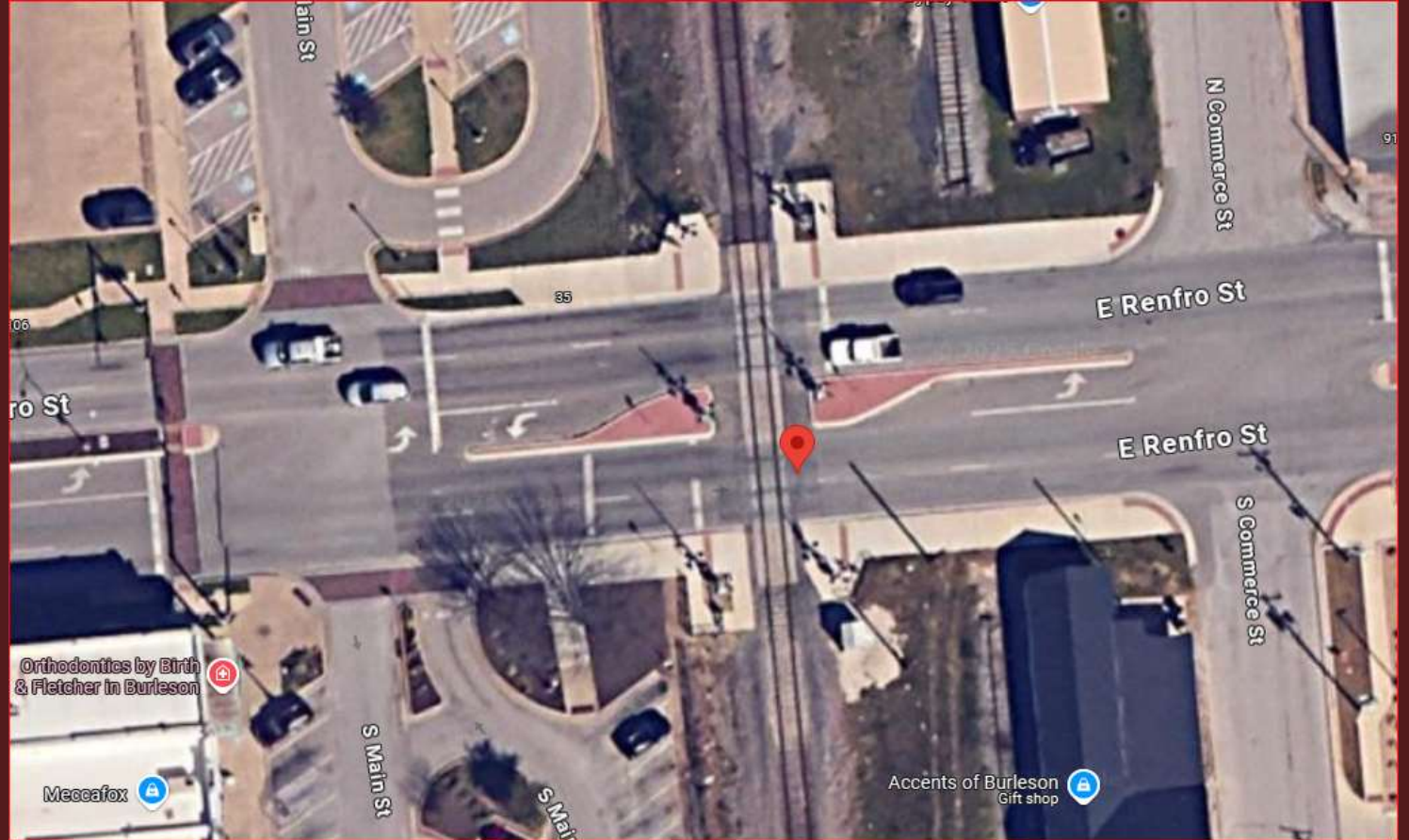
DOT 415970E



Project Locations

Renfro St. between
Commerce St. and Main St.

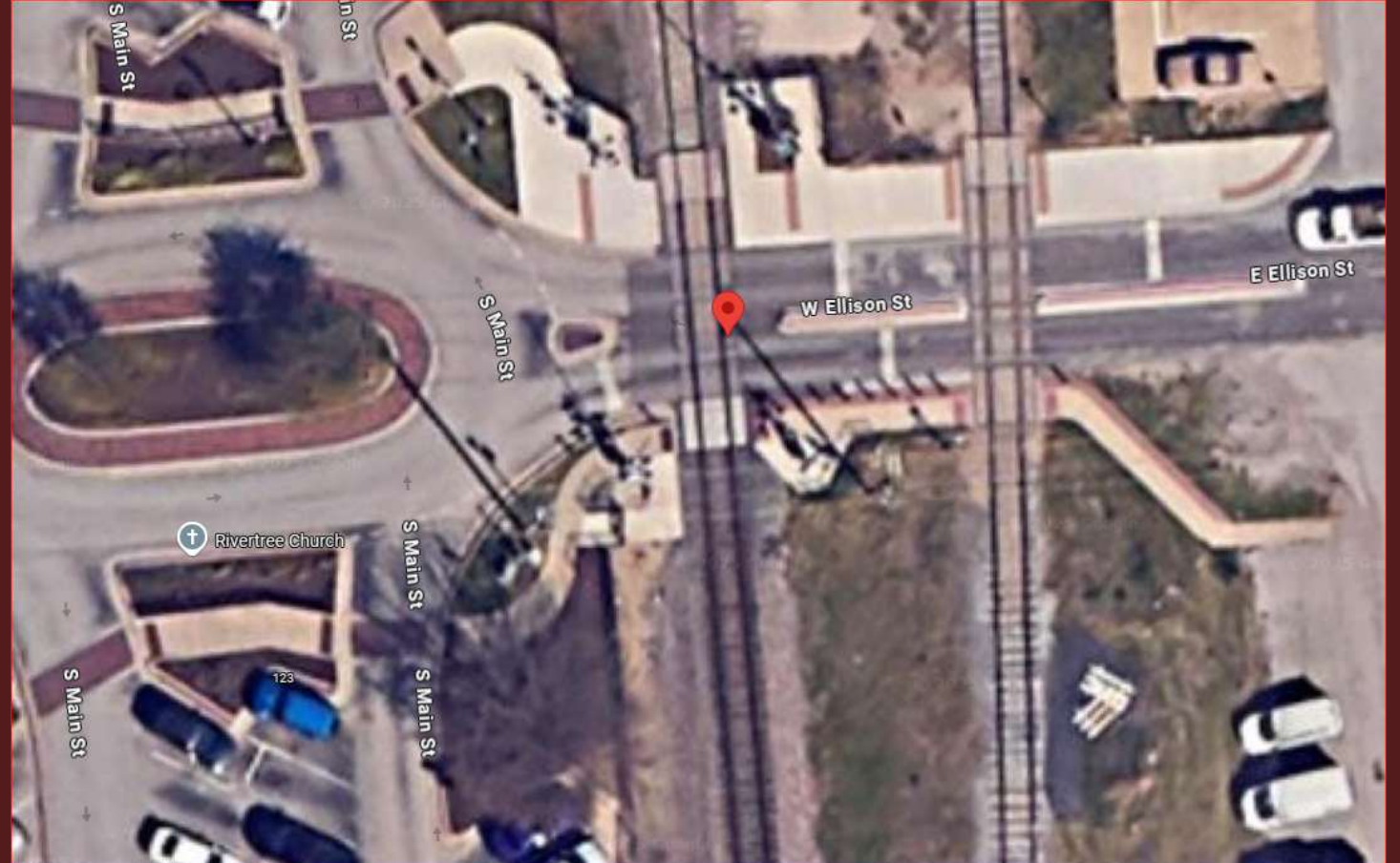
DOT 415972T



Project Locations

Ellison St. between
Commerce St. and Main St.

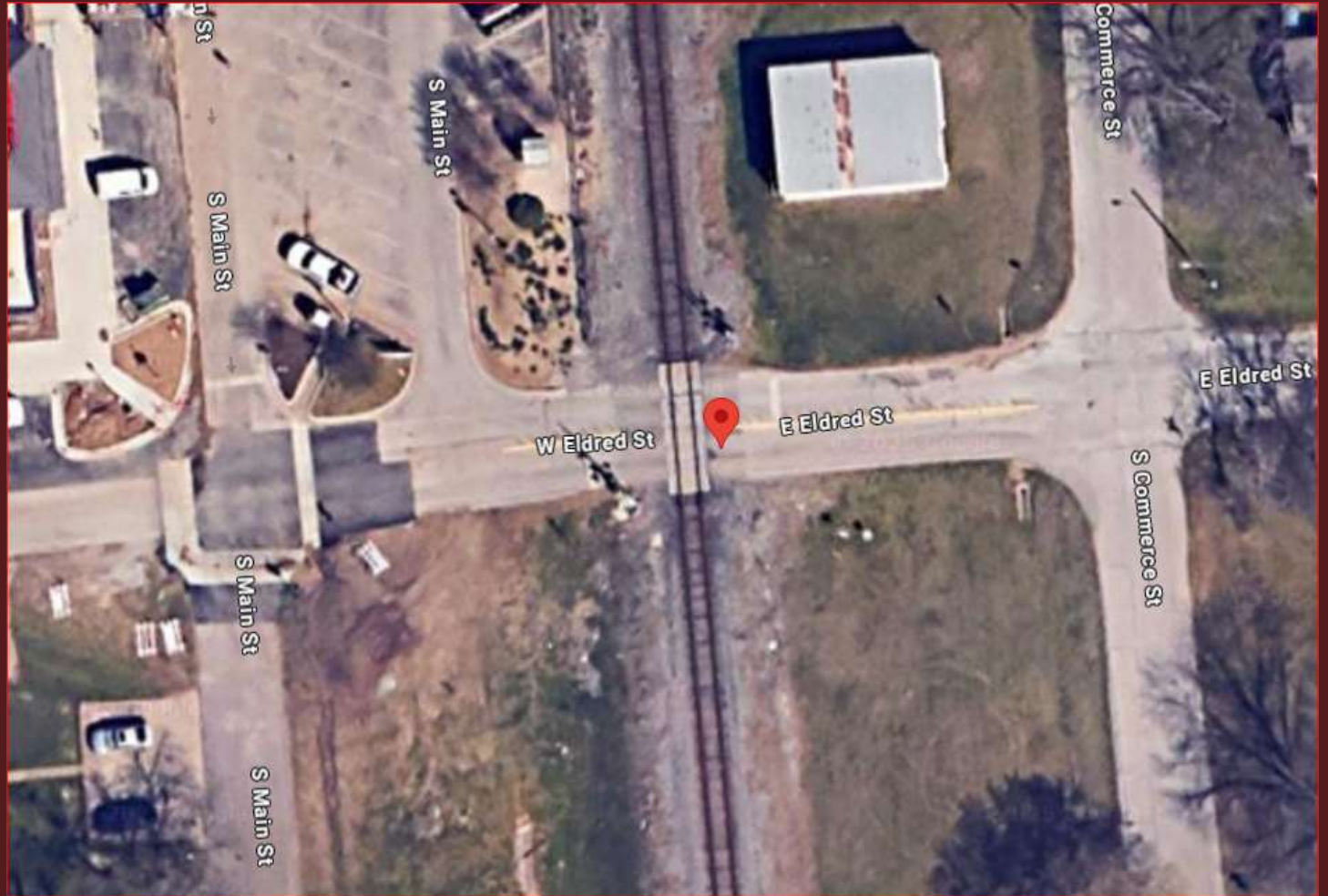
DOT 415973T



Project Locations

Eldred St. between
Commerce St. and Main St.

DOT 415974G



Agreement Specifics

- TxDOT to fund 100% of the Project.
- TxDOT will manage the delivery of the Project.
- City of Burleson will own facilities upon completion of Project and must agree to maintain the installed signage and pavement markings.

Action Requested

Approve a resolution authorizing an Advance Funding Agreement (AFA) with the TxDOT Department of Transportation (TxDOT) for for Local Government Maintenance of Railroad Pavement Markings and Signs (Off-System) and authorize the City Manager to sign on behalf of the City Council.

Questions / Discussion

Randall Morrison, P.E., Director of Capital Engineering

Capital Engineering

rmorrison@burlesontx.com

(817) 426-9295