

Disannexation Petition

Location:

- 1550 S Burleson BLVD
- 139 N Briaroaks RD
- 8.550 acres

Applicants:

Nat Killpatrick (Basden Steel Corporation)

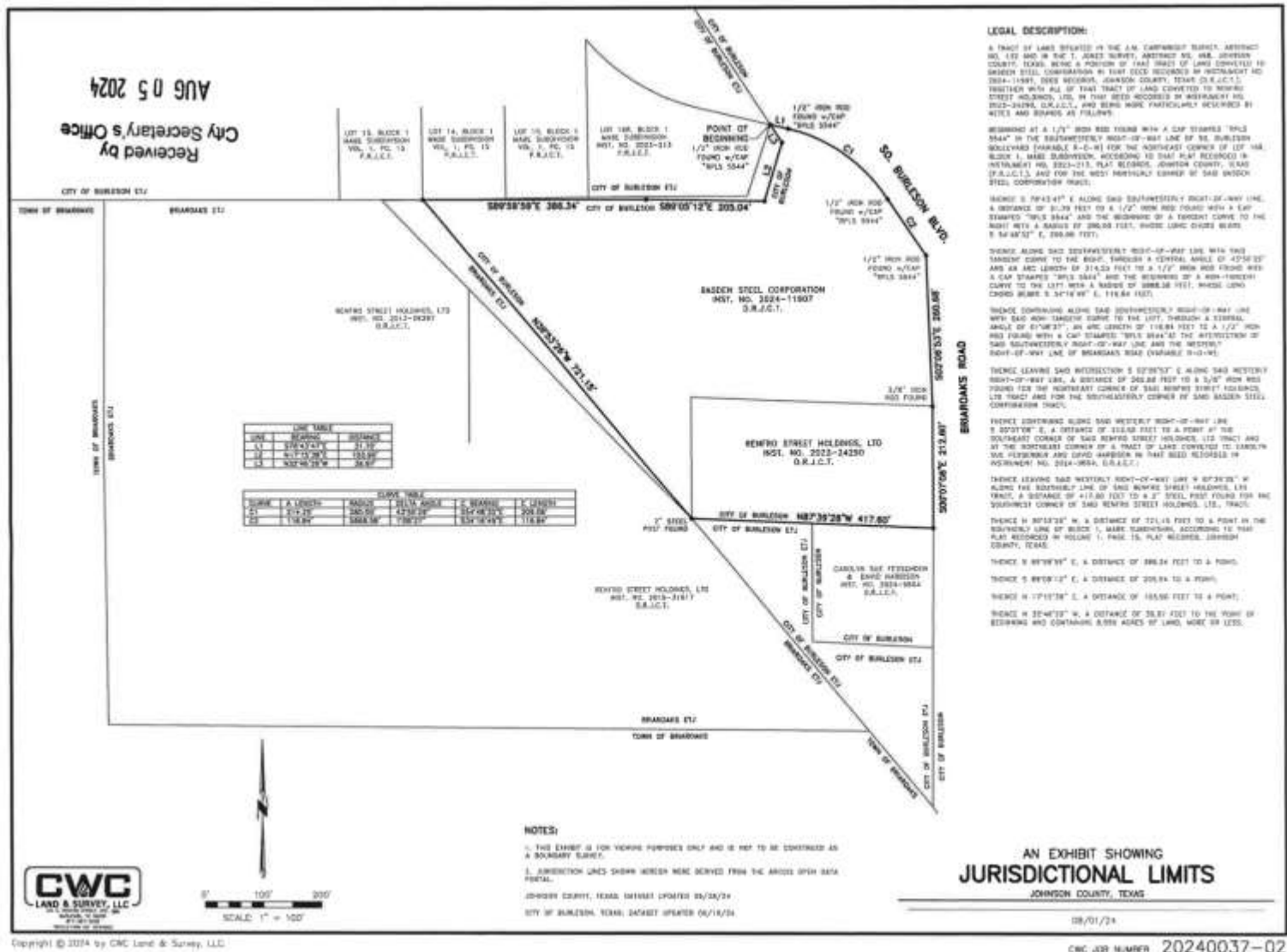
Bruce Basden (Renfro Street Holdings, Ltd.)

Item for approval:

Disannexation of approximately 8.550 acres of land located within the Corporate Limits of the City of Burleson (Case24-270).



Disannexation Petition



Comprehensive Plan

Regional Office/Commercial

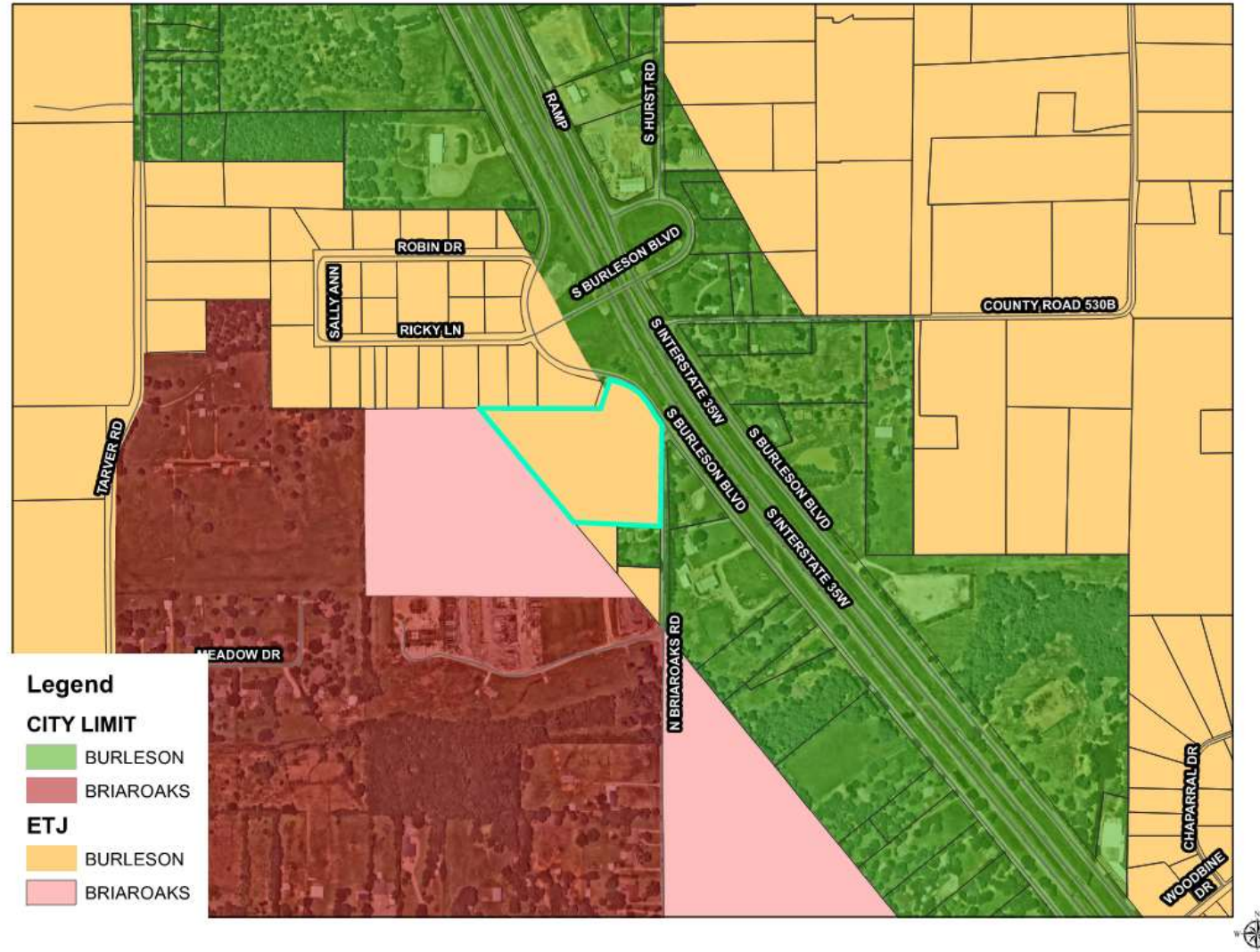


Zoning

Agriculture



Post Disannexation



Disannexation Petition

Staff's Recommendation

Staff recommends denial of the petition to disannex approximately 8.550 acres of land from the Corporate City Limits of the City of Burleson:

- Significant reduction of the city's land frontage along this portion of the IH -35 corridor.
- Loss of land use regulatory authority along a portion of the IH-35 Overlay District.
- Loss of Ad Valorem Tax and (possible) future Sales Tax. In 2023, the total City taxes collected were \$1,987.98.

