

SE Tarrant Sewer Erosion Control Improvements



Professional
Services Agreement

April 15, 2024

Project Background

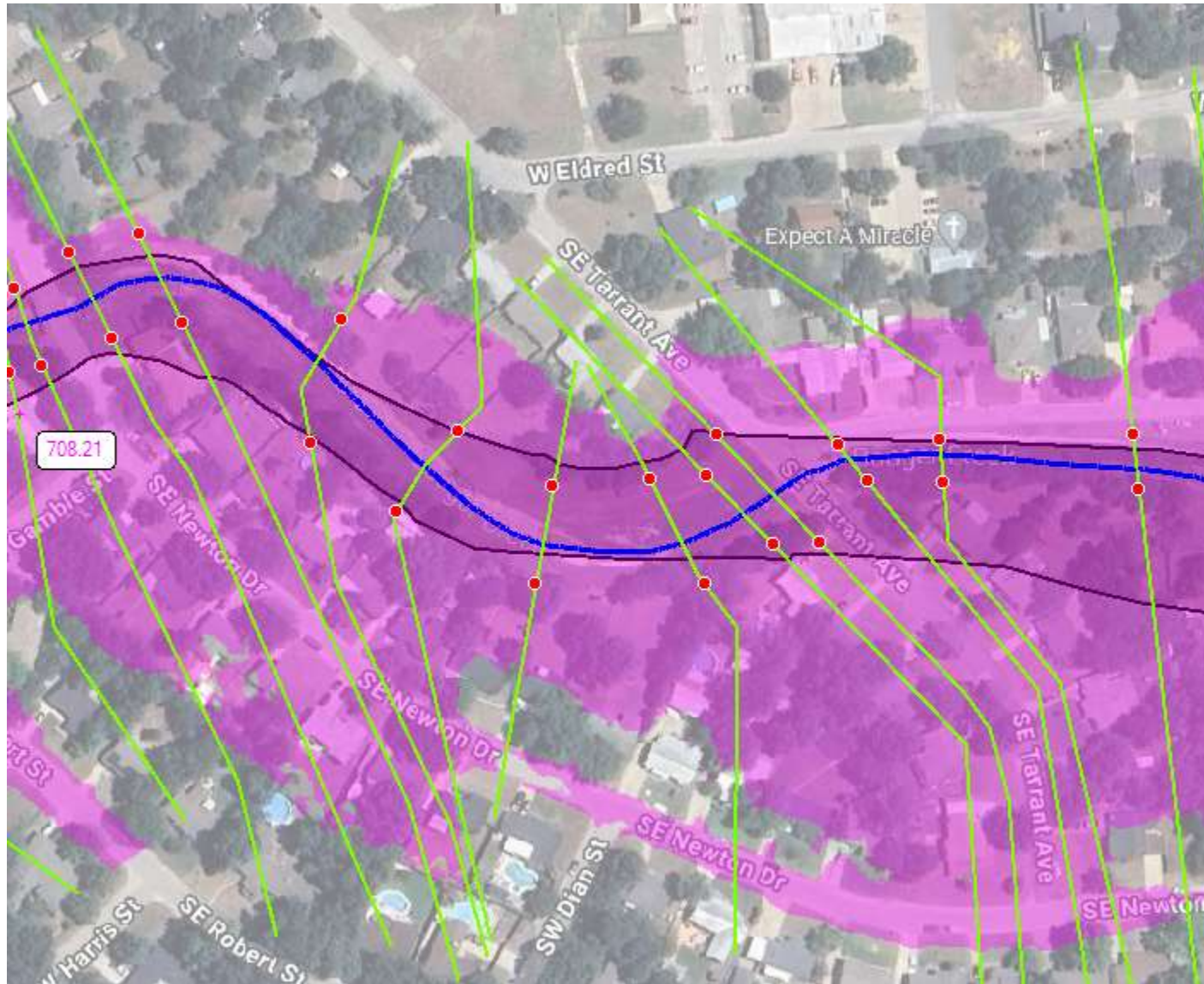


- Staff identified streambank erosion gradually encroaching upon two sanitary sewer manholes in the vicinity of SE Tarrant
- Backyards of homes adjacent to the creek will be threatened if not addressed

Examples Erosive Conditions to be Addressed



Cause of Erosion



- Unprotected stream banks typically start eroding when the water velocity is above 6 feet per second
- The Master Drainage Study model indicates velocities between 7-10 feet per second
- Some form of structured protection is needed to combat these erosive velocities



Project Benefits

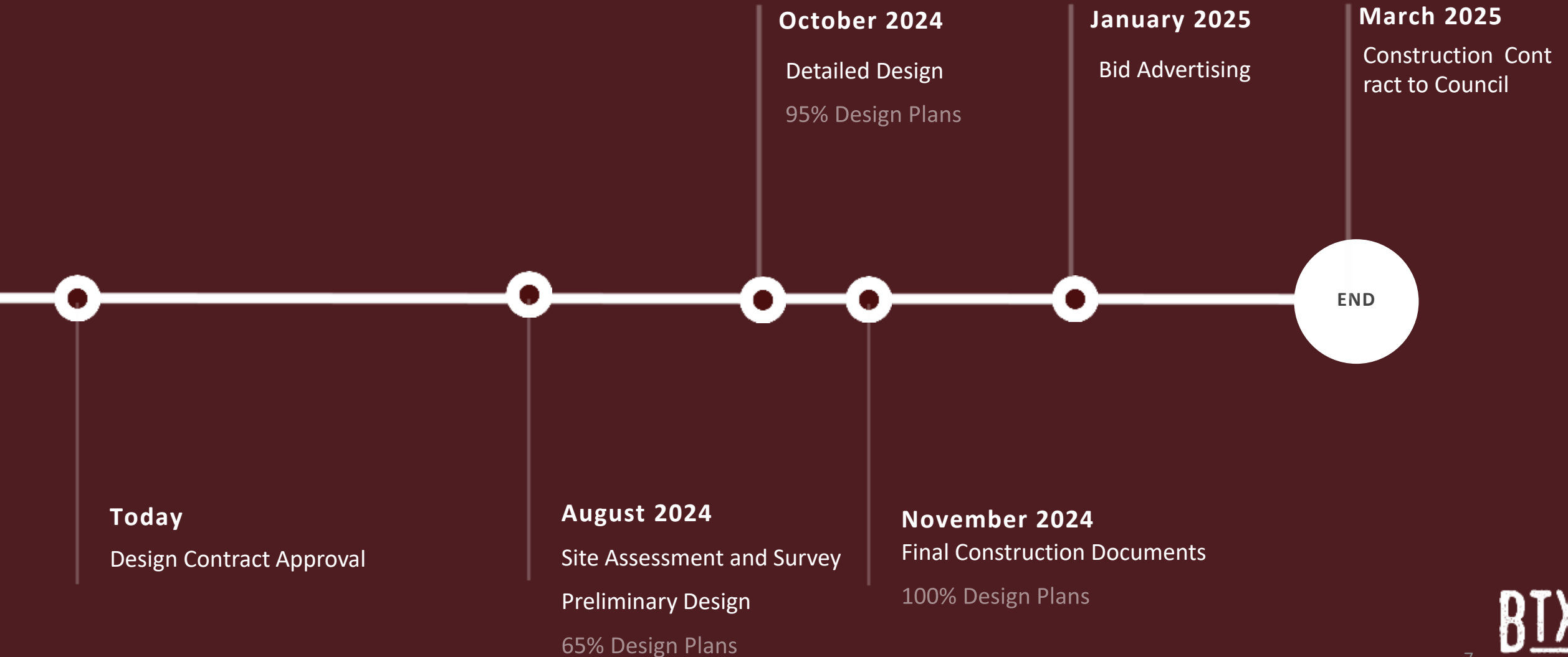
- Protecting Sewer Infrastructure to prevent larger environmental issues
- Improving low water crossing (if no adverse effects created downstream)
- Reducing emergency response for closing the street

Next Steps



- Gresham Smith selected as design consultant
- Scope of contract
 - Site Assessment and Survey
 - Preliminary and Detailed Design
 - Streambank Stabilization Alternatives Analysis
 - Elevated Roadway with Culvert
 - Environmental Assessment
 - Final Construction Documents
 - Construction Administration/ Construction Observation
- Design Budget: \$400,000
- Design Fee: \$337,950
- Construction Budget: \$785,000 to be refined through design
- Funding: Water and Sewer Bonds

Project Timeline



Action Requested

Approve a Professional Services Agreement
with Gresham Smith in the amount of \$337,950

Questions / Discussion

Errick Thompson, P.E., CFM®
Public Works & Engineering
ethompson@burlesontx.com
817-426-9610