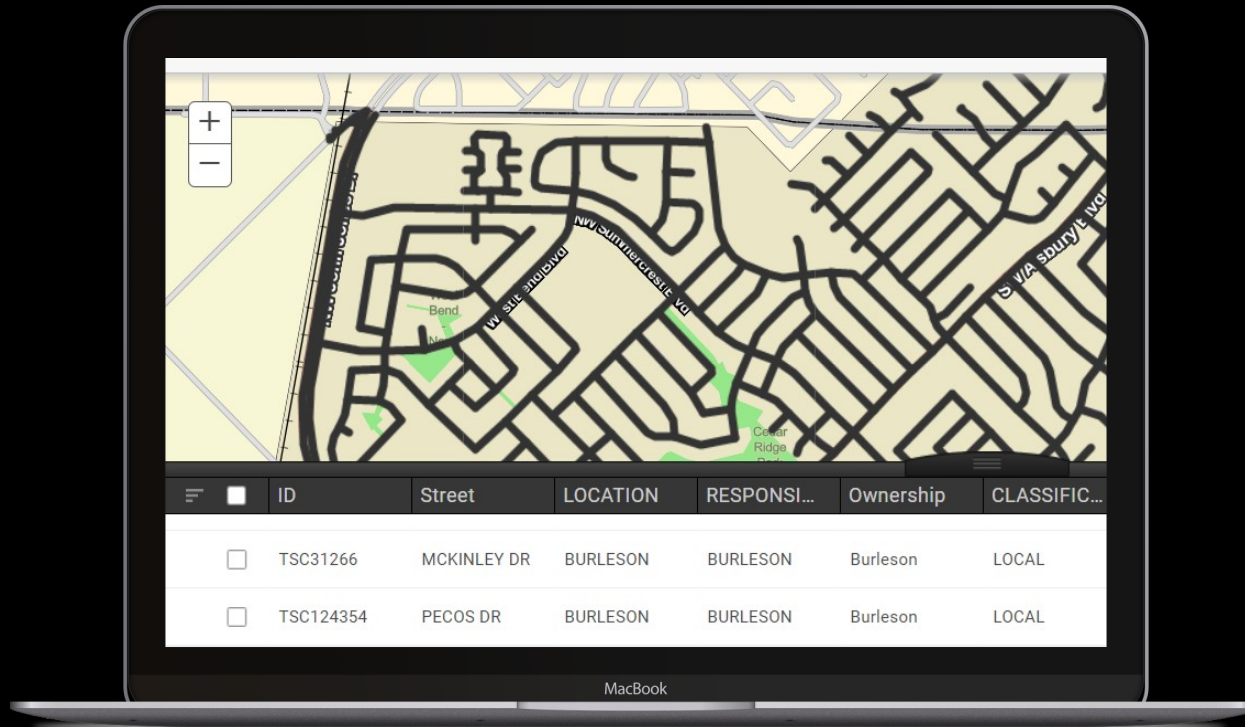


**REJECT RFP  
2022-025  
PAVEMENT  
MANAGEMENT  
ASSESSMENT  
SOLUTIONS AND  
AWARD PAVEMENT  
ASSESSMENT  
CONTRACT**

---



# PAVEMENT MANAGEMENT



## ✓ CENTERLINE MILE

Public Works maintains 216.4 centerline miles of roadway

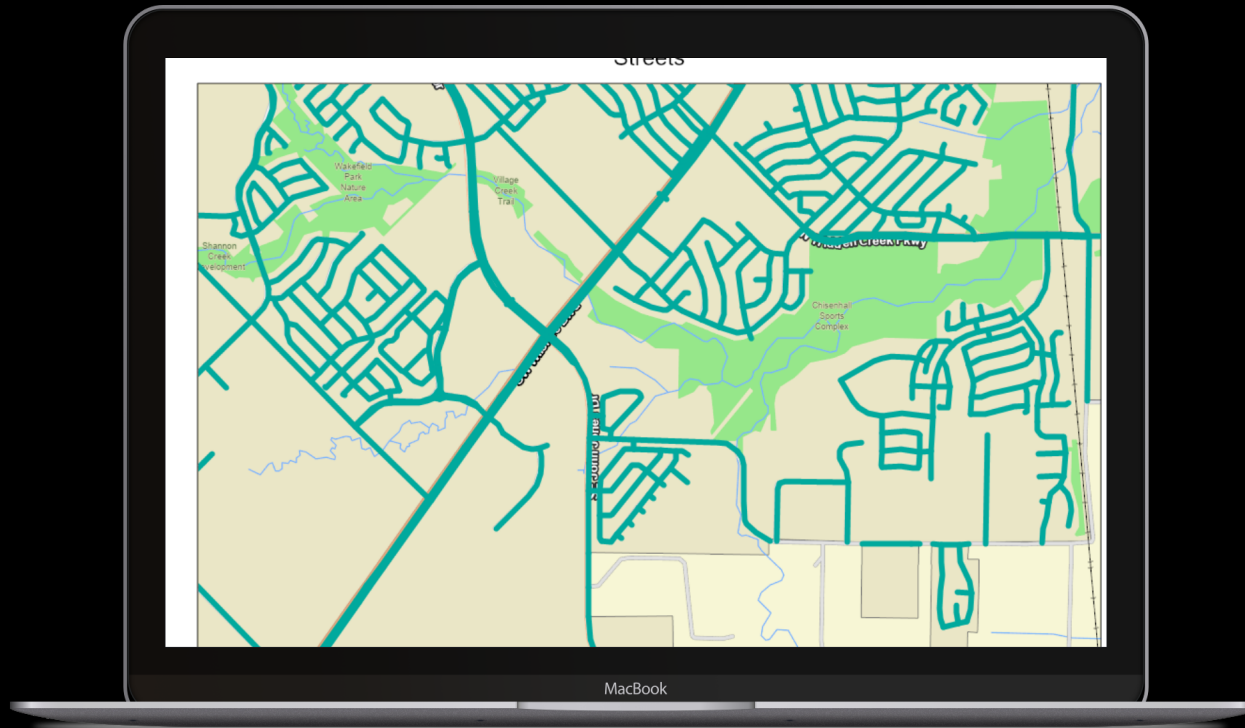
## ✓ TREATMENT

Public Works utilizes multiple treatment methods based on condition and pavement type.

## ✓ ASSESSMENT

Condition is determined based on an automated assessment of the roadway.

# PAVEMENT ASSESSMENT



## ✓ AUTOMATED COLLECTION

Vehicle drives the roadways and identifies defects within the roadway

## ✓ PAVEMENT CONDITION INDEX (PCI)

PCI is calculated from data collected on defects.

## ✓ ASSESSMENT

Completed every 3 years to update the Capital Improvement Plan and Maintenance schedule

# RFP 2022-025

- **REQUEST FOR PROPOSAL**

Staff initiated a RFP for Pavement Management Assessment Solutions in 2022

Assessment included:

1. Automated collection of roadway surface defects and distresses which include cracking, potholing, rutting, weathering, etc.
2. Road roughness collection which identified rideability
3. Images of roadway defects
4. Images of overall roadway
5. Alternatives for additional asset collections

# RFP 2022-025

- **SUBMITAL**

Staff received two submittals for the RFP

The submittals did not meet the minimum requirements of the RFP.

- **REJECT PROPOSALS**

Staff is recommending to reject the proposals.

# TXSHARE

- **COOPERATIVE PURCHASING**

The North Central Texas Council of Governments (NCTCOG) operates and manages a purchasing cooperative named TXShare. This cooperative acquires contract pricing utilizing the Texas Local Government Code procurement policies and procedures. They offer services for professional services and items across multiple departments.

- **PAVEMENT ANALYSIS SERVICES**

TXShare has current agreements with four vendors for pavement analysis services

Staff reviewed the services and experience provided for all vendors

Staff selected Fugro as the preferred vendor



# FUGRO

## ● SCOPE OF SERVICES

Project Initiation

Review Current GIS

Network Referencing

Pavement Condition Data Collection

Data Processing and Analysis

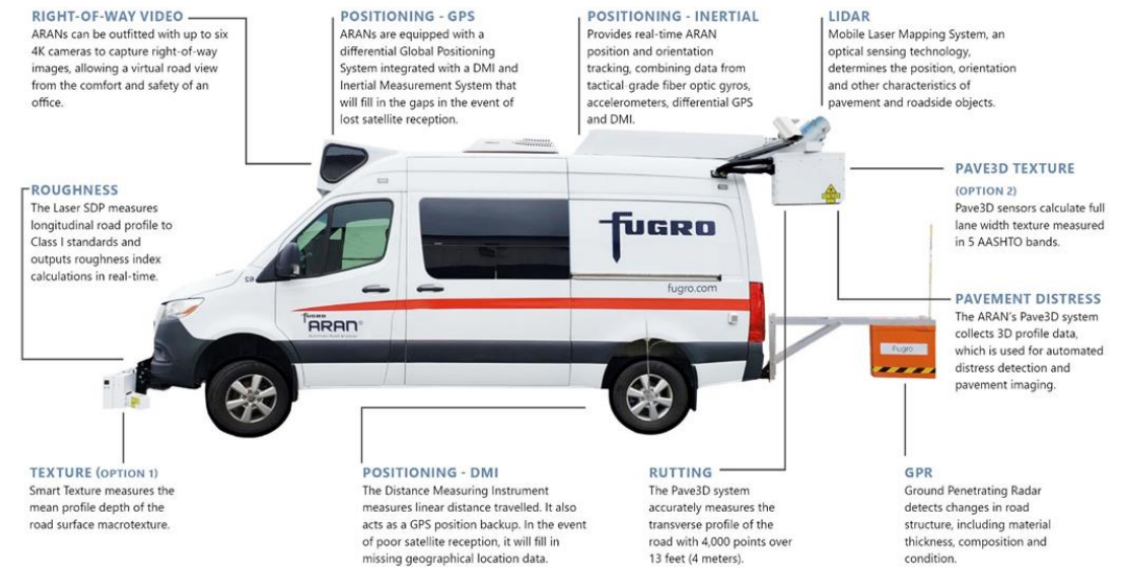
Pavement Condition Index (PCI) Calculation

Deliverable Data Set which included

PCI Score for all roadway segments

Asset Data for all roadways

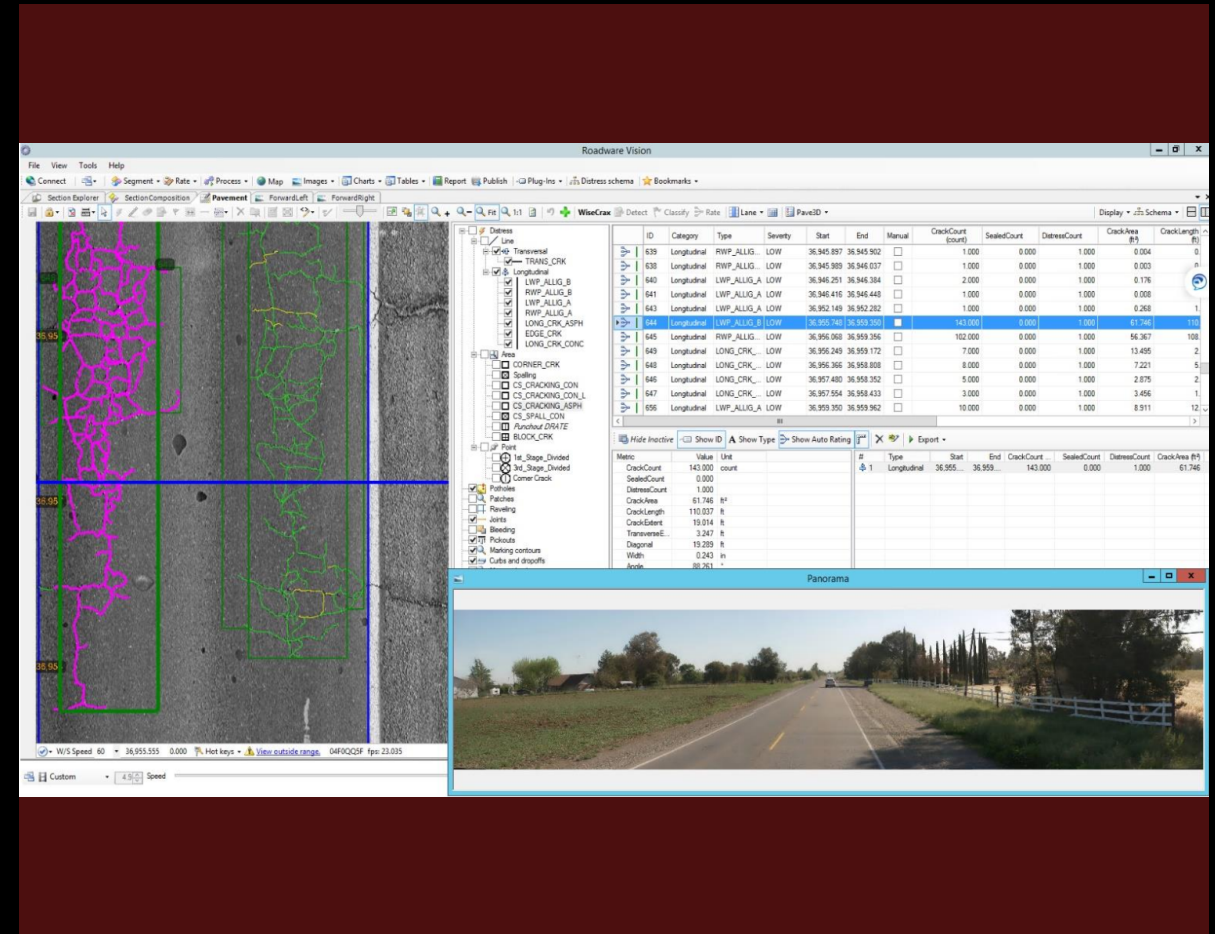
Asset Data for all street signs, signals, and pavement markings



## COST OF SERVICES

\$151,250

CIP funded





# OPTIONS

## RECOMMENDED



### APPROVE

Approve a minute order to reject proposals for RFP 2022-025 Pavement Management Assessment Solutions



### DENY

Deny a minute order to reject proposals for RFP 2022-025 Pavement Management Assessment Solutions.





# OPTIONS

## RECOMMENDED



### APPROVE

Approve a service contract with Fugro USA Land, Inc. through a cooperative purchasing agreement with the North Central Texas Council of Governments to perform a street pavement assessment in the amount of \$151,150.



### DENY

Deny a service contract with Fugro USA Land, Inc. through a cooperative purchasing agreement with the North Central Texas Council of Governments to perform a street pavement assessment in the amount of \$151,150.

