

Chisenhall Hike & Bike Trail – Proposed Features

PRESENTED TO CITY COUNCIL – JUNE 1, 2026

JEN BASHAM, DIRECTOR OF PARKS AND RECREATION





Background

- In October of 2020 Council requested that all mountain bike trail enhancements be approved by Council.
- In September of 2023, Fort Worth Mountain Bike Association (FWMBA) entered into an agreement to maintain the trails.
- FWMBA currently maintains the trails and the existing features.
- They also design, propose, and install new features on a periodic basis.

About FWMBA

- Year Founded: 2006
- Trails maintained around the DFW: 5
 - North Boaz Trail
 - Chisenhall Hike and Bike
 - Gateway Park
 - Sansom Park
 - Fossil Creek
- Over 200 members with active engagement
 - Membership fees help fund selected projects.
- Community Engagement
 - Over 11k followers on organization Facebook page
 - Strong volunteer support



Current Trail Features & Inspections

- Features: 24 total (includes water crossing bridges)
- FWMBA Inspections: Monthly inspections, plus rider/volunteer reports
- City Inspections: Quarterly, in addition to inspections conducted when FWMBA requests assistance



Overview

- Trail System: Over 10 miles of soft-surface trails, ranging from beginner to expert difficulty.
- Proposal: Wall Berm on Cactus Jack, fully funded and constructed by FWMBA at no cost to the City.



CHISENHALL HIKE & BIKE TRAIL MAP



**Parks and
Recreation**



Scan this QR code
for an interactive
version of the trails

Trails maintained in partnership
with the volunteers of Fort Worth
Mountain Bikers' Association



You are located at
TRAILHEAD 1

DIRECTIONAL ARROWS ARE FOR BIKE RIDERS.
PEDESTRIANS SHOULD TRAVEL IN THE
OPPOSITE DIRECTION.

TRAIL NAME	DISTANCE	DIFFICULTY
KEEP ON TRUCKIN'	1.6 MILES	EXPERT
NORTH SIDE	1.18 MILES	INTERMEDIATE
RECKLESS	0.4 MILES	INTERMEDIATE
WRECKED	0.4 MILES	EXPERT
THUNDERDOME	0.4 MILES	EASY
CACTUS JACK	0.7 MILES	EASY
SOUTH TOWN	2.23 MILES	BEGINNER
GOATMAN'S ISLAND	1.42 MILES	BEGINNER
WEST LOOP	0.73 MILES	BEGINNER
FIELD LOOP	1.55 MILES	INTERMEDIATE

- ### TRAIL ETIQUETTE TIPS
1. Ride on open trails only
 2. Carry out trash
 3. Be friendly and yield to other riders
 4. Never damage plants or scare wildlife
 5. Plan ahead, be prepared for emergencies
 6. Exercise good judgment and act in a responsible manner

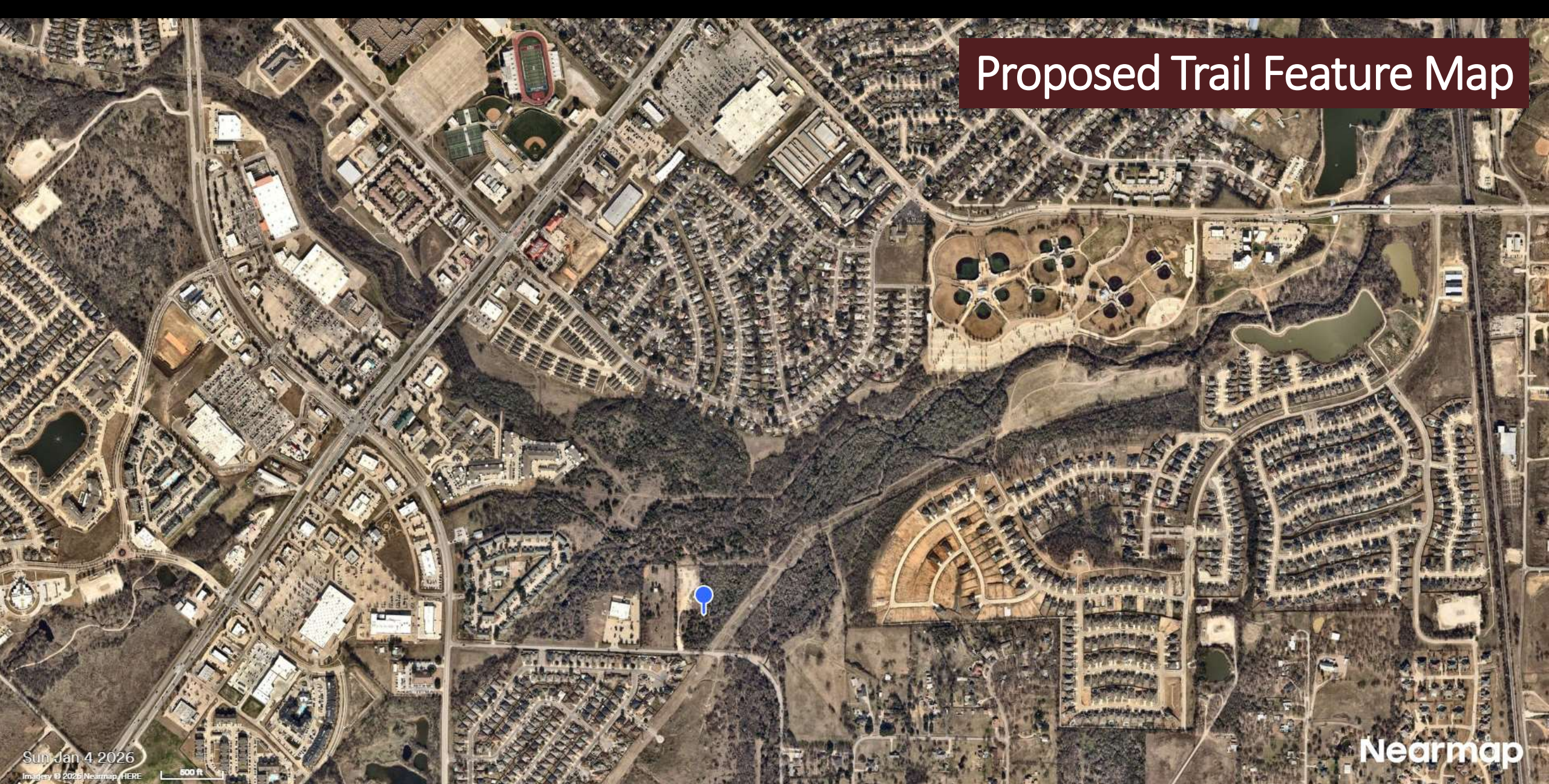


- Field Loop — 100-113
- West Loop — 200-206
- Goatmans Island — 300-312
- Northside — 400-410
- Wrecked — 500-504
- South Town — 600-623
- Keep On Truckin — 700-717
- Cactus/Goldilocks — 800-806
- Thunderdome — 900-903
- Reckless — 1000-1004

CHISENHALL

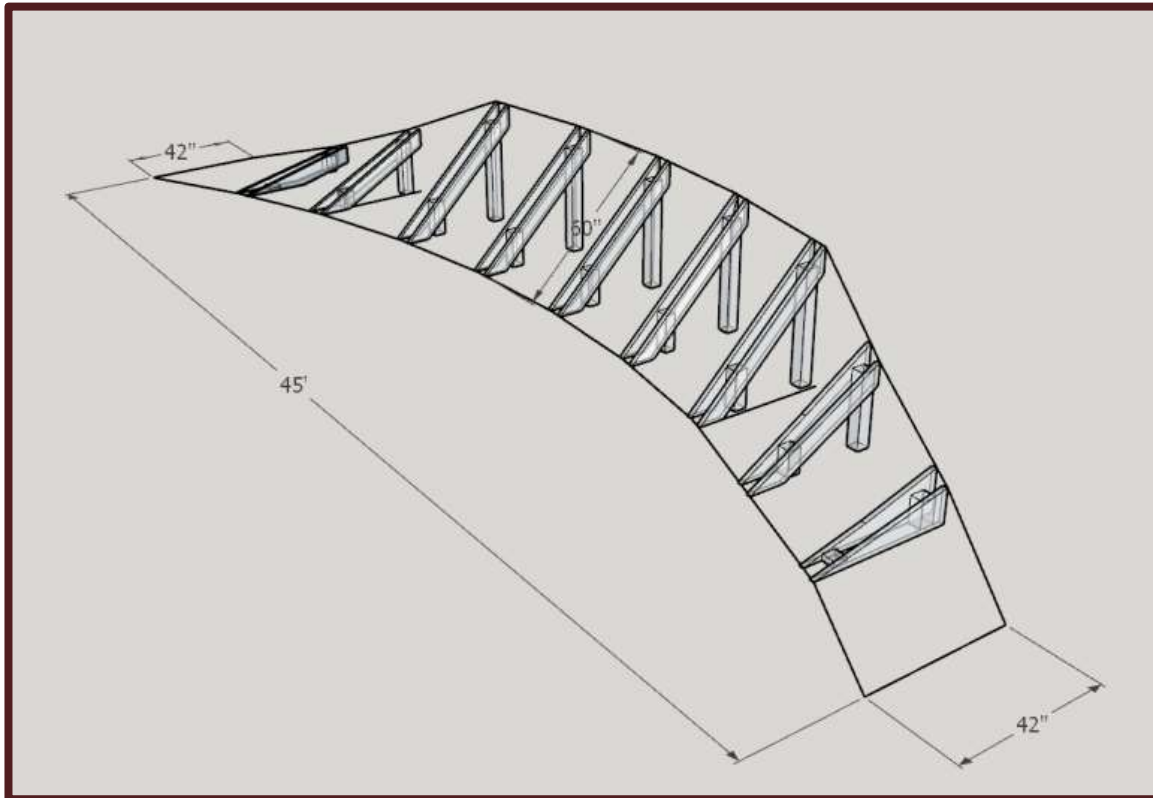
EMERGENCY MARKER MAP

Proposed Trail Feature Map



Proposed Feature: Wall Berm

- Location: Cactus Jack Loop



Design, Maintenance, & Safety

- Built using pressure-treated lumber and galvanized hardware
- Features anchored with concrete footers for long-term stability
- Designed for beginner-to-intermediate rider progression
- Emergency marker posts will be installed near each new feature to aid in response if needed
- Safety signage at each feature highlighting rider skill level, reminders, and trail etiquette
- All ongoing maintenance performed by FWMBA under existing Beautification Agreement

Fiscal Impact:

All materials, labor, and construction funded by FWMBA



Prior Action/Input:

Presented to the Parks and Recreation Board on April 16, 2026

Parks and Recreation Board feedback/input included the following considerations and responses:

Install signage in advance of the feature to notify trail users of the upcoming element.

Response: Signage will be installed prior to the feature.

Open up portions of the tree canopy near Keep on Trucking to improve exit visibility.

Response: Tree canopy work has been completed to improve visibility.

Clearly communicate the anticipated construction timeline and duration of work.

Response: The anticipated construction duration is one month from start.

Rope off the area during construction for public safety.

Response: The area will be roped off during construction activities for public safety purposes.

Provide notice of an alternate route for trail users who may prefer to bypass the feature area.

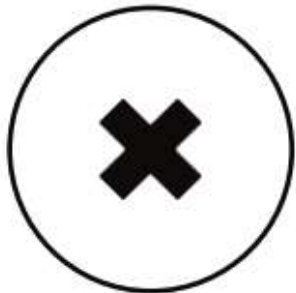
Response: The feature has been designed in a way that allows users to bypass it if they choose not to utilize the feature.



OPTIONS



Approve a minute order
authorizing the proposed trail
features as presented



Deny



Questions / Comments

Jen Basham

Parks and Recreation

jbasham@burlesontx.com

817.426.9201