



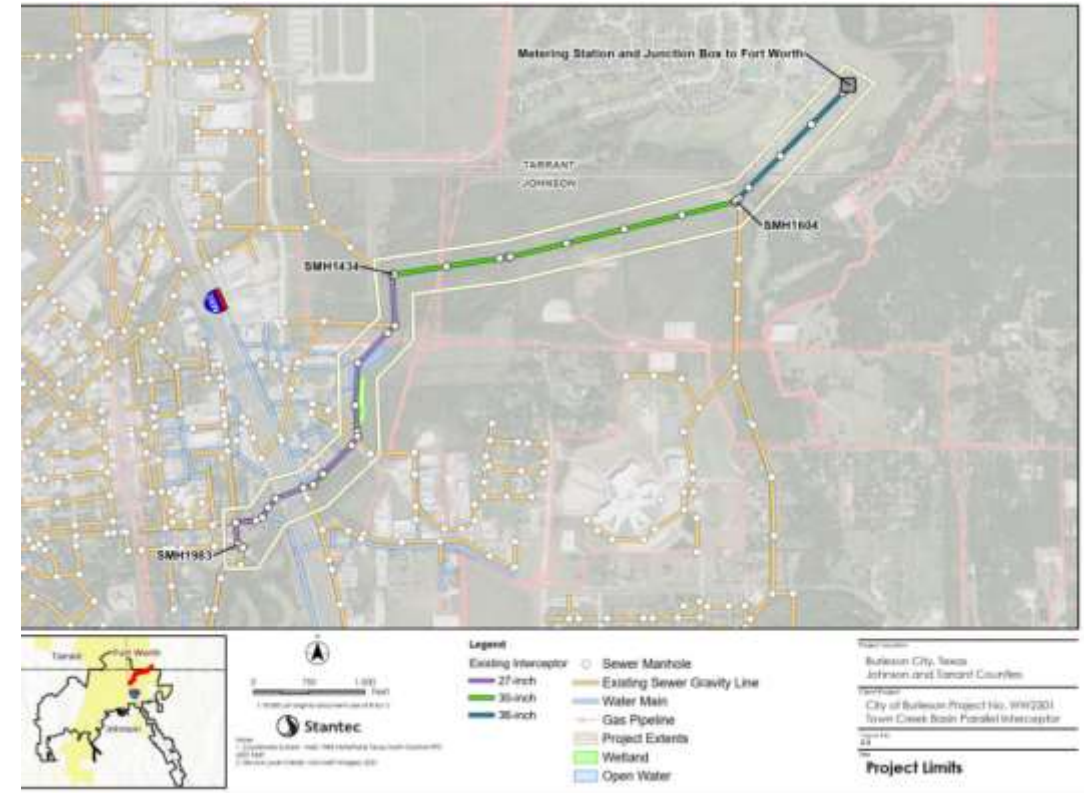
TOWN CREEK BASIN PARALLEL INTERCEPTOR SEWER LINE *Resolution Authorizing Eminent Domain*

PRESENTED TO THE CITY COUNCIL

APRIL 20, 2026

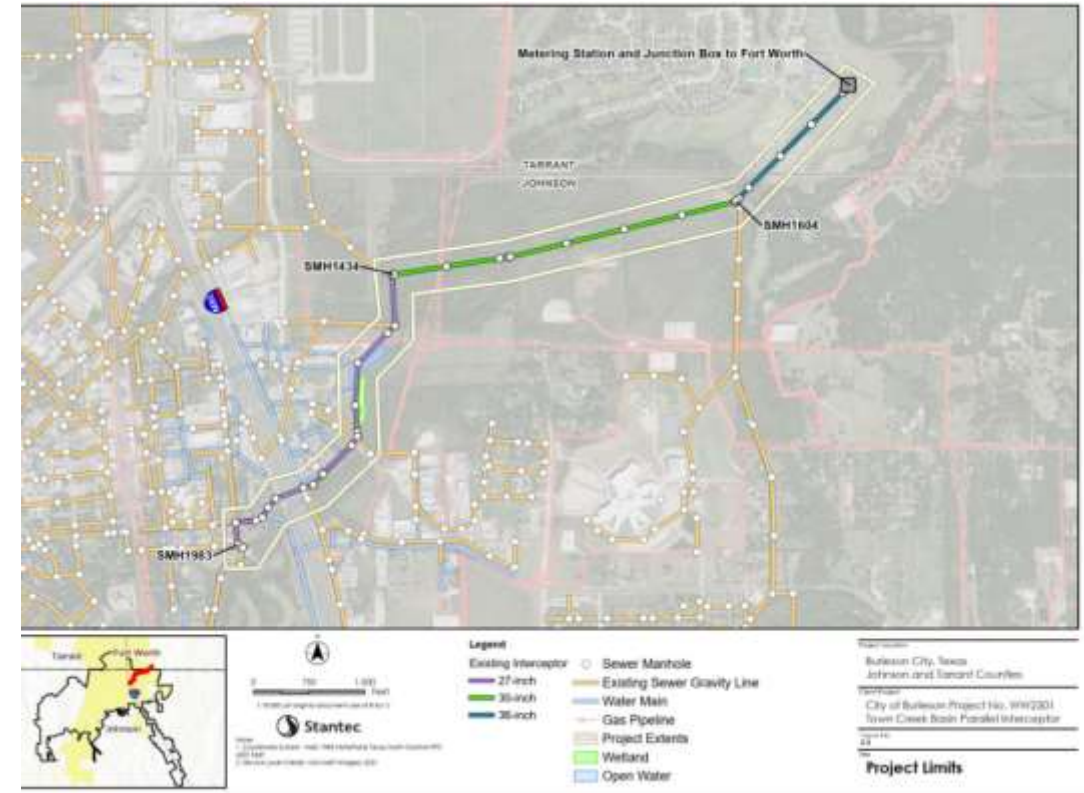
Project Background

- Project includes design and construction of a 36"-60" parallel sanitary sewer interceptor pipeline along Village Creek.
- The existing interceptor line was constructed in 2003 and replaced the initial interceptor that metered all of the City's wastewater flows.
- The proposed interceptor will start at the corner of Scott Street and Rigney Way just west of I-35, traverse under I-35, cross Renfro street and extend approximately 2 miles to the northeast, terminating at the Southern Oaks Golf Course.



Project Background

- These interceptor improvements will meet forecasted demands within the Town Creek service basin and is necessary for future developments, such as Chisholm Summit and Tall Grass.
- The improvements constructed with the project increases capacity in the City's system to service the capacity that has already been secured with the City of Fort Worth (25 MGD Peak Wet Weather Flow)



Summary of Proposed Acquisition

- 18 individual acquisitions needed
 - four permanent easements with private property owners (0.3431 acres)
 - two permanent easements with the City of Burleson (0.2486 acres)
 - eight temporary easements with private property owners (5.5836 acres)
 - Four temporary easements with the City of Fort Worth (1.0967 acres)
- Total of 7.2720 acres
- Consultant assistance for surveys, appraisals, document preparation and negotiations

Action Requested

Consider and take possible action on a Resolution authorizing the commencement of negotiations and, if necessary, the filing of eminent domain proceedings for the purpose of acquiring property for use by the City for the construction of the Town Creek Basin Parallel Interceptor Sewer Line project (WW2301) to serve existing and new development in the City and for other public purposes permitted by law.



Questions/Comments

Randy Morrison, PE

Director of Capital Engineering

rmorrison@burlesontx.com

817-426-9612