

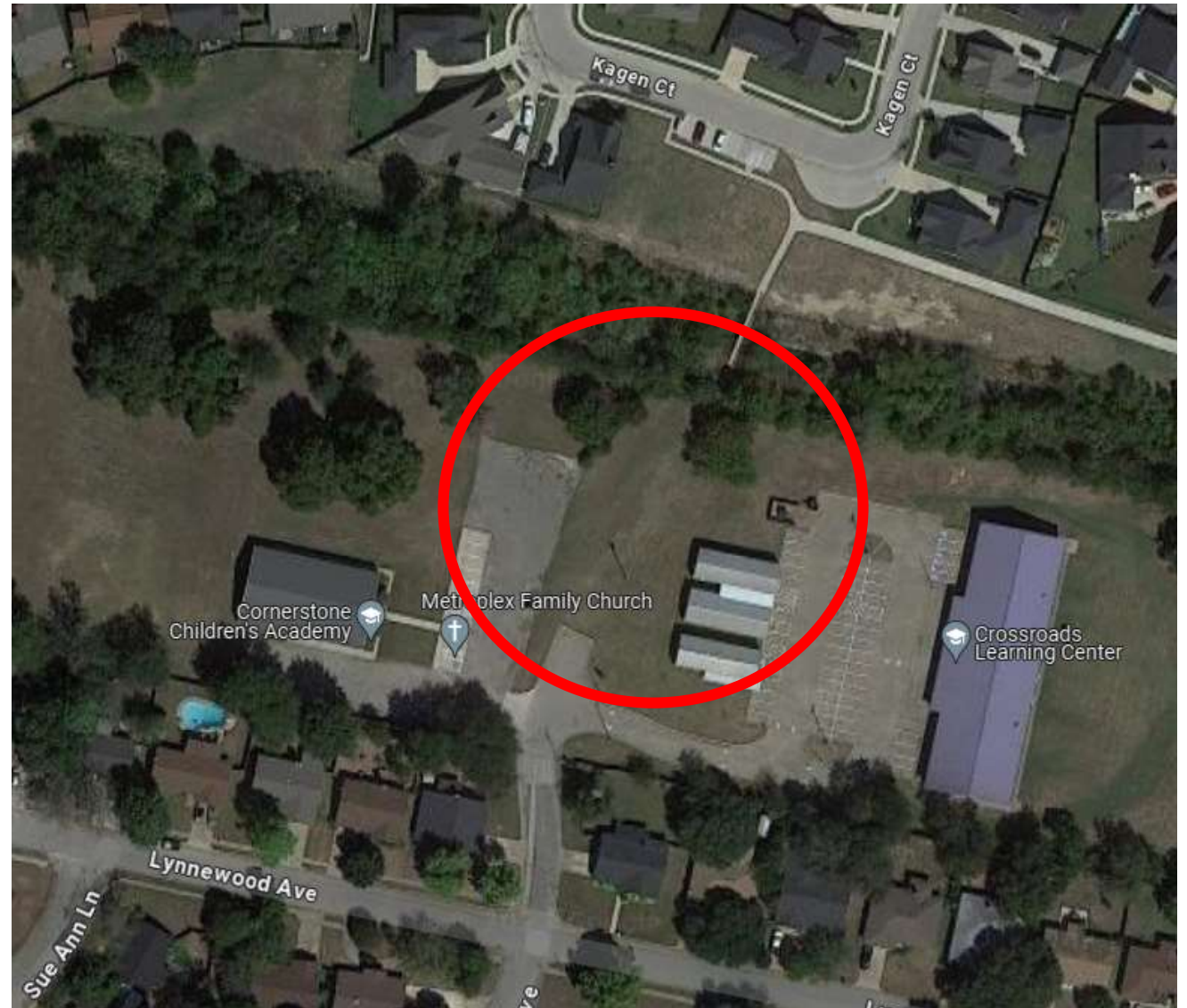


Pedestrian Improvements – Pleasant Manor

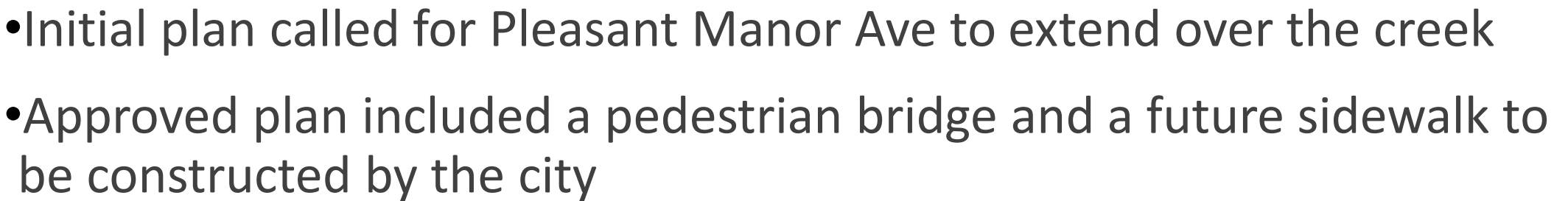
ERRICK THOMPSON, DIRECTOR
PUBLIC WORKS & ENGINEERING

Background

- Staff received a concern from a resident in October regarding overgrown vegetation at the bridge adjacent to Crossroads Learning Center
- Staff responded and cleaned up the bridge and regraded the approach to the bridge
- Also included in the concern was the lack of sidewalk/trail between the bridge and Pleasant Manor
- Staff discussed possible cost sharing with BISD, but they were not in favor since it is not on their property

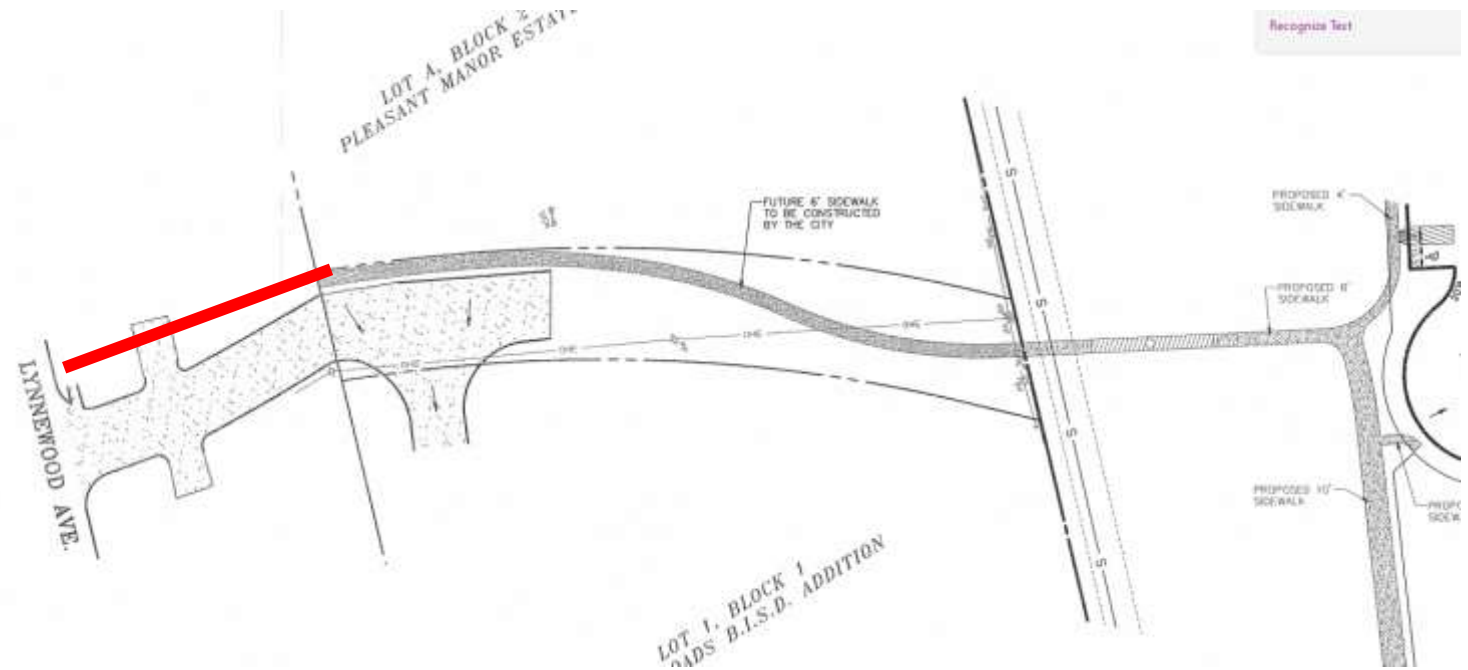


THE CITY OF
BURLESON
TEXAS



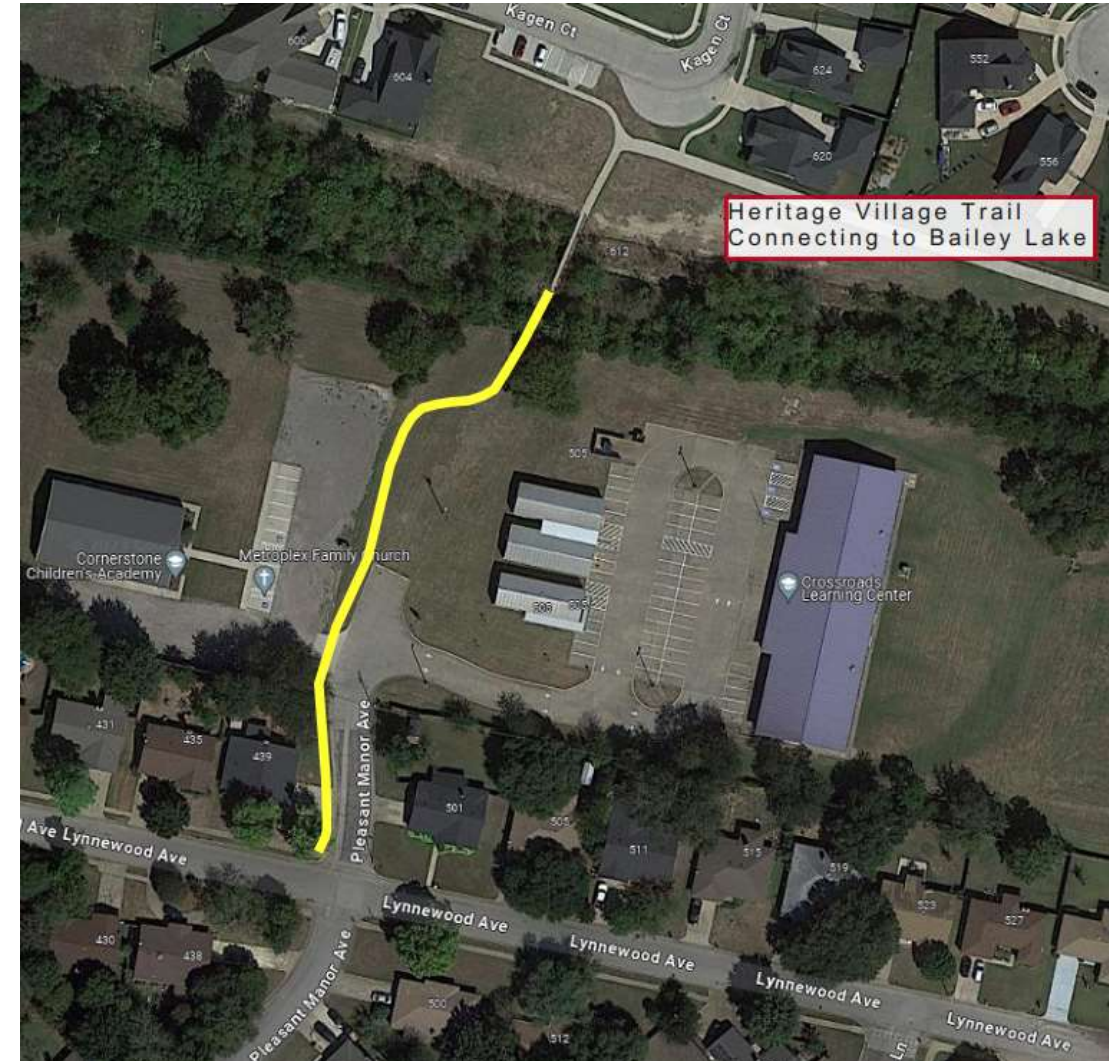
Discussion

- Existing fee simple
- Staff would recommend constructing sidewalk to Lynnewood Ave.
- Approx 500' of 6' wide sidewalk
- Estimated Design and Construction cost - \$100,000



Discussion

- Rank compared to other sidewalk projects across the city
- GO Bond Sidewalk Program funding of \$1.2M over the next 5 years



Questions / Comments

Errick Thompson, Director
Public Works & Engineering
EThompson@Burlesontx.com