

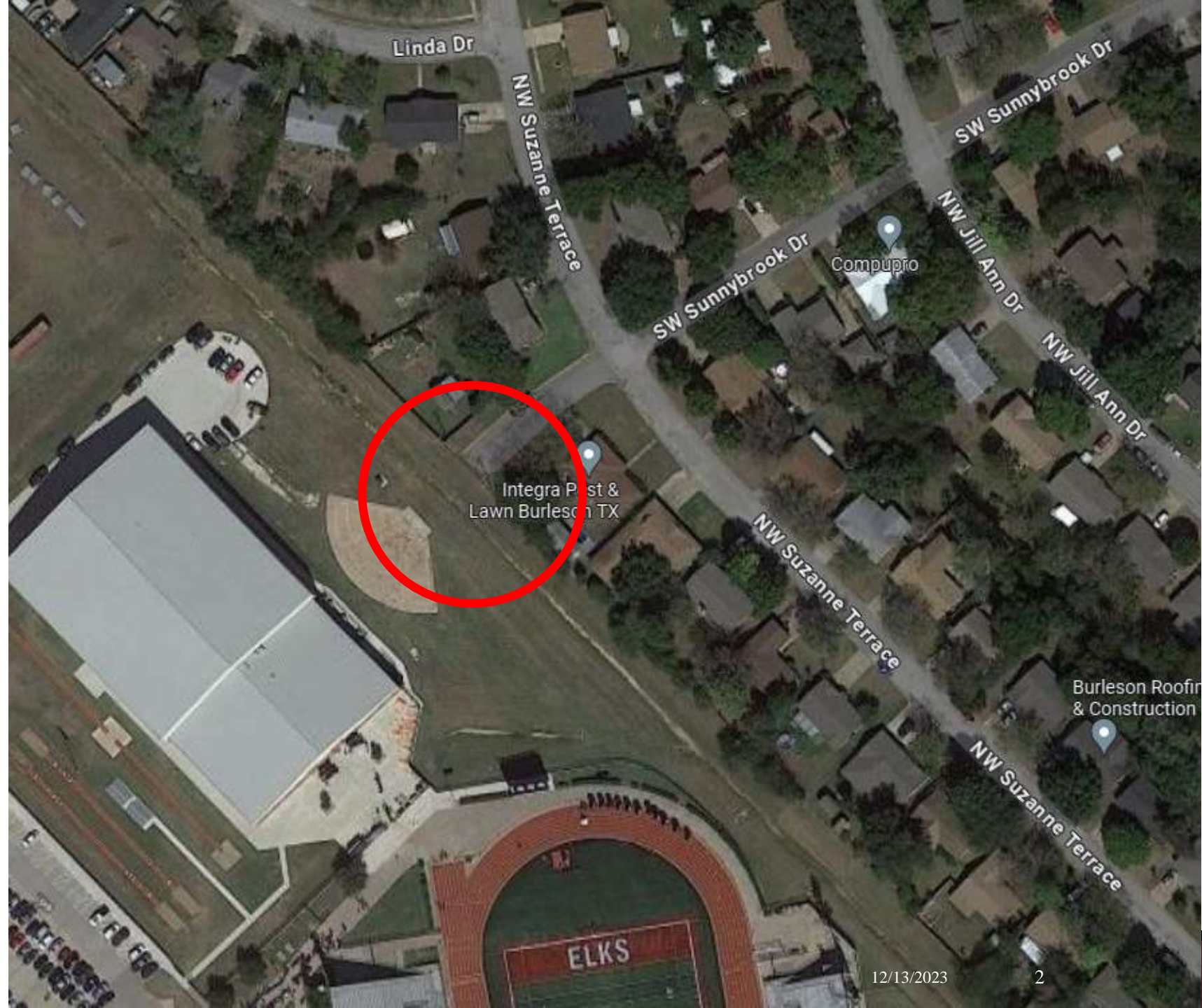
# Pedestrian Improvements - BHS

---

TOMMY LUDWIG, CITY MANAGER

# Background

- Staff received a request from a resident in October regarding students parking along Sunnybrook Drive and crossing over the drainage channel to access Burleson High School.



# Background

---

- Staff met with BISD staff in November to discuss the possibility of a bridge and sidewalk to help mitigate the hazard of students crossing the ditch, especially during wet weather when the drainage channel is full and water is moving swiftly.
- Initial feedback from BISD staff was the concern of encouraging pedestrian mobility from Sunnybrook to behind the field house where there is limited visibility.
- Initial recommendation from BISD staff was to fence off the access to mitigate the risk.

# Questions / Comments

---

Tommy Ludwig  
City Manager  
[TLudwig@burlesontx.com](mailto:TLudwig@burlesontx.com)