

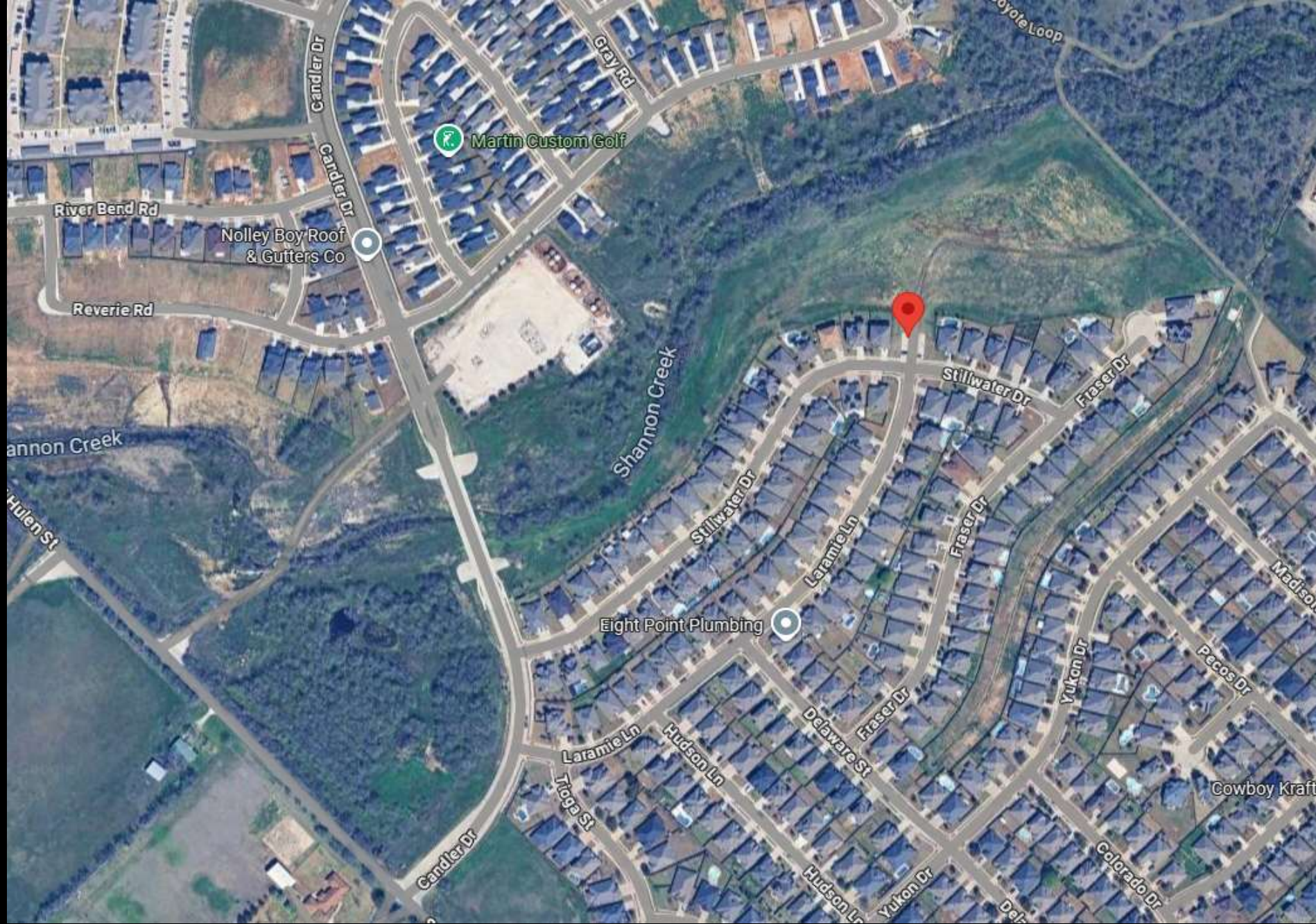
Shannon Creek Nature Park

CITY COUNCIL, FEBRUARY 2, 2026

STAFF CONTACT: JEN BASHAM, DIRECTOR OF PARKS AND RECREATION



CURRENT SITE



Project Background

Shannon Creek is centrally located as part of our park system and creates linkages between multiple trails, parks, and open space. It is positioned to serve over 4,000 households within 1 mile.

- **Identified as a Priority:**
 - Listed as a priority project in the 2019 Parks and Recreation Master Plan.
- **Fall 2021 – Round 1 Public Engagement:**
 - 303 online survey responses + 28 in-person town hall attendees.
 - Community provided input on desired park features.
 - Council presentation held on Nov. 8, 2021, with support to move forward with design development.
- **February 7, 2022 – Design Contract Awarded:**
 - Council approved a design contract with Studio Outside.
- **Fall 2022 – Round 2 Public Engagement:**
 - 509 survey responses and 32 on-site participants.
 - Discussion focused on parking, screening, and park programming.
 - Input resulted in a phased design approach.
- **November 2022 – Council and Park Board Approval:**
 - Council approved the phased design. The Park Board unanimously supported the final concept and phasing plan.
- **Flood Study and Coordination:**
 - This project required extensive coordination to complete flood studies, addressing both current drainage challenges and future floodplain needs.
 - Council received ongoing design direction updates throughout the Capital Improvement Program discussions.
- **June 2025 – Final Design and Bidding:**
 - Staff finalized construction documents, incorporating updates to align with the Community Park project and avoid amenity duplication while ensuring equitable park access.
 - Project released for bid on June 6, 2025.
 - Six bids were received; all exceeded the allocated project budget.
 - Bids were formally rejected at the August 4, 2025, City Council Meeting, with Council directing staff to re-evaluate project scope in light of the Community Park addition and Park Board recommendations.



Project Overview

- **Location:** 1624 Stillwater Drive, Burleson, TX 76028
- **Size:** 14.86 acres
- **Total Project Budget:** \$1.8 million
- **Purpose:** Transform undeveloped land into a nature-based community park; Strengthen connectivity within the Burleson parks and trails network
- **Key Features:**
 - Natural surface trails and paved walkways
 - Wildflower areas and native tree plantings
 - Site furnishings and landscape enhancements
 - Integrated storm water management and drainage solutions





SHANNON CREEK NATURE PARK

BURLESON, TEXAS

2025.11.10

PROPOSED SCOPE REVISION

RENDERED SITE PLAN



Wakefield Heights Park

100% NATIVE PLANT PALETTE

11.5 ACRES OF RESTORED NATIVE PRAIRIE PROVIDES HEALTHY AND RESILIENT ECOSYSTEMS.



NATURE WALK

OFFERS IMMERSIVE EXPERIENCE THROUGH NATIVE HABITAT.

BOARDWALK

6' BOARDWALK SPANNING THE BIOSWALE FOR ACCESS AND VIEWS.



SCREENING TREES

SCREENING TREES: EASTERN RED CEDAR AND AMERICAN ELM FOR PRIVACY AND SHADE.

NATIVE PRAIRIE PLANTING

RESTORES NATIVE GRASSLAND HABITAT AND SUPPORTS WILDLIFE.





DRAINAGE FIELD SEED MIX

NATIVE GRASSES AND WILDFLOWERS HELP ABSORB RUNOFF AND PREVENT EROSION.

MIDWAY SEED MIX

NATIVE BLEND FOR PRAIRIE RESTORATION AND RESILIENCE.

BLACKLAND PRAIRIE SEED MIX

DESIGNED TO RESTORE TEXAS'S ENDANGERED BLACKLAND PRAIRIE ECOSYSTEMS.





BUTTERFLY GARDEN

SUPPORTS LOCAL POLLINATORS AND ENHANCES BIODIVERSITY.





POLLINATING FLOWERS
PROVIDE NECTAR AND COLOR FOR BEES, BUTTERFLIES,
AND HUMMINGBIRDS.

BID ALTERNATE
POLINATOR GARDEN



100% NATIVE POLLINATOR GARDEN
SUPPORTS LOCAL POLLINATORS AND WILDLIFE.

BID ALTERNATE
POLINATOR GARDEN



BID ALTERNATE
POLINATOR GARDEN



BID ALTERNATE
POLINATOR GARDEN



OBSERVATION BENCH
OFFERS A QUIET PLACE TO REST AND ENJOY THE LANDSCAPE



NATIVE PLANTS LIKE MAXIMILIAN SUNGLOWER AND GREGG'S MISTFLOWER
ATTRACT AND PROVIDE HABITAT FOR POLLINATOR SPECIES



Park Board Feedback-Nov 20 and Jan 15

Drainage- Staff reviewed the site with Capital Engineering last spring and confirmed drainage is functioning as designed with positive flow; however, because the park is in a floodplain, it will flood during major rain events. The project includes a bioswale to slow water, and it will be cleaned out, replanted, and maintained as part of the improvements.

Trails- the board discussed washing out of the proposed trail material and whether it would wash out or be ADA compliant. With the binder in the decomposed granite the surface is ADA accessible, however it is maintenance heavy. This information was presented as an update at the January 15, 2026 park board meeting and the board provided feedback that they would prefer natural cut in trails.

Alternative trail materials include:

- Cut in compacted dirt trails (these would be considered natural trails and not be required for review under ADA)
- Concrete trails (this material would be ADA compliant; however it would place the project over budget, strategic areas could be completed in concrete within budget to make improved amenities such as the butterfly garden accessible)

Signage-the board expressed the interpretive signage will be important to educate the public on what the naturalized areas are and the habitats they protect

Additional seating-One board member proposed additional seating using natural elements such as boulders

Path width-the board discussed widening the paths, but came to consensus that keeping the smaller width would limit off road use by ATV's and 4 wheelers

Color of plant material-the board wanted to ensure that the biodiversity will include lots of different colored vegetation for high contrast

Photography-Due to the scenic nature, one board member voiced the potential to add in designated photo areas to limit the trampling of plants and grasses and a potential ordinance to require permitted photography at the site, they also mentioned that we could see an uptick in people stealing plants and would need to monitor for budgeting and replacement purposes

Updated Cost Estimate-Base Bid

An updated cost estimate for the project places the base project at: \$655,870.50

Add Alts are estimated at: \$410,900

- Parking lot light pole
- Low Boardwalk Crossing x2
- Gabion Filter at Parking Area
- Butterfly Garden

Total Project with Ad Alts is estimated at: \$1,118,133

Current Budget in CIP: \$1,800,000

Net Difference: \$681,867



NEXT STEPS:

Bid Project (if approved)

- *Tentative Date:* February – March 2026
- Revised project scope to be released for competitive bidding.

Award Construction Contract (City Council)

- *Target Date:* April 2026
- Council consideration and approval of the construction contract award.

Project Start

- *Estimated Start Date:* May – June 2026
- Construction anticipated to begin following contract execution and pre-construction coordination.



FEEDBACK

Staff recommends reducing the project scope to the proposed design and reallocating any remaining project funding to the Community Park project to maximize resources, align with current community priorities, and ensure the most efficient use of available funds.

