



City Council

Atmos Energy Pipeline and Aboveground Facilities Easement

March 18, 2024

Public Works & Engineering

Hooper Business Park Infrastructure



Roadway/Sanitary Sewer

- Lakewood Drive under construction with temporary connection to FM 1902
- Permanent extension of Lakewood Drive to tollway under design – staff working with NTCOG, NTTA, and TxDOT (construction funding to be identified)
- Sewer lift station and force main to serve business park, Craftmasters and surrounding development – construction procurement underway

Stormwater Retention/Detention

- Design underway – construction anticipated to begin summer 2024
- Performance Agreement obligates start of construction no later than June 30, 2024, and completion no later than September 30, 2026



Atmos Facilities

Nearest source of existing gas – 2.5 miles away

Existing high pressure transmission gas line will extend from FM 917 and FM 1902 – Atmos requires a minimum exclusive 30-foot easement/right-of-way

Low pressure gas line will extend along Lakewood Drive

Regulator station converts high pressure to low pressure for distribution lines

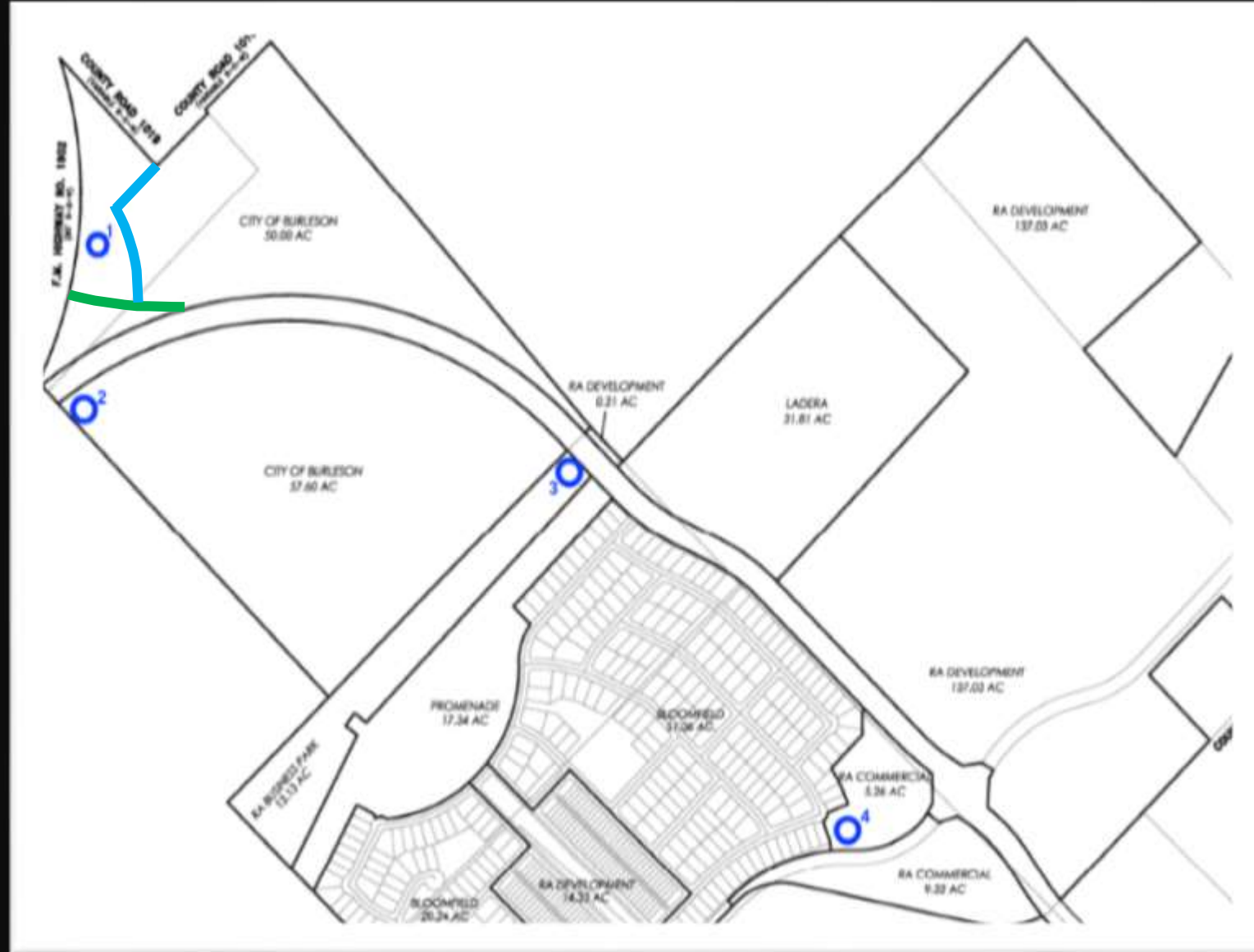


Potential Locations for Atmos Regulator Station

4 locations evaluated

Gas to be provided for Hooper Business Park, Chisholm Summit, Craftmasters, and future development

Options presented to both the Infrastructure and Development (I&D) Committee and City Council



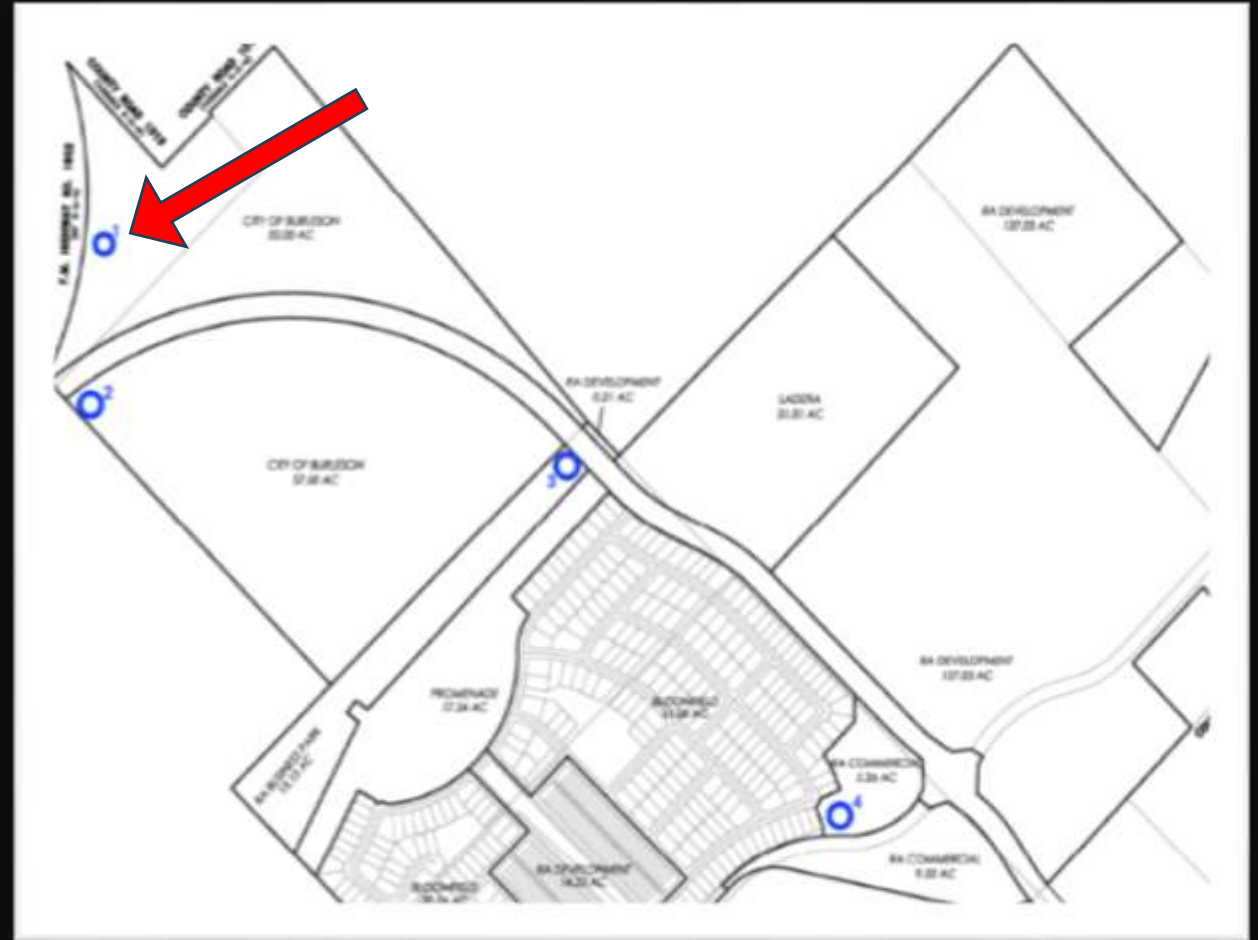
Infrastructure & Development Committee and City Council

I&D Committee supported Option 1, the City-owned property, at its meeting January 10, 2024

City Council directed staff to proceed with this location at its meeting January 22, 2024

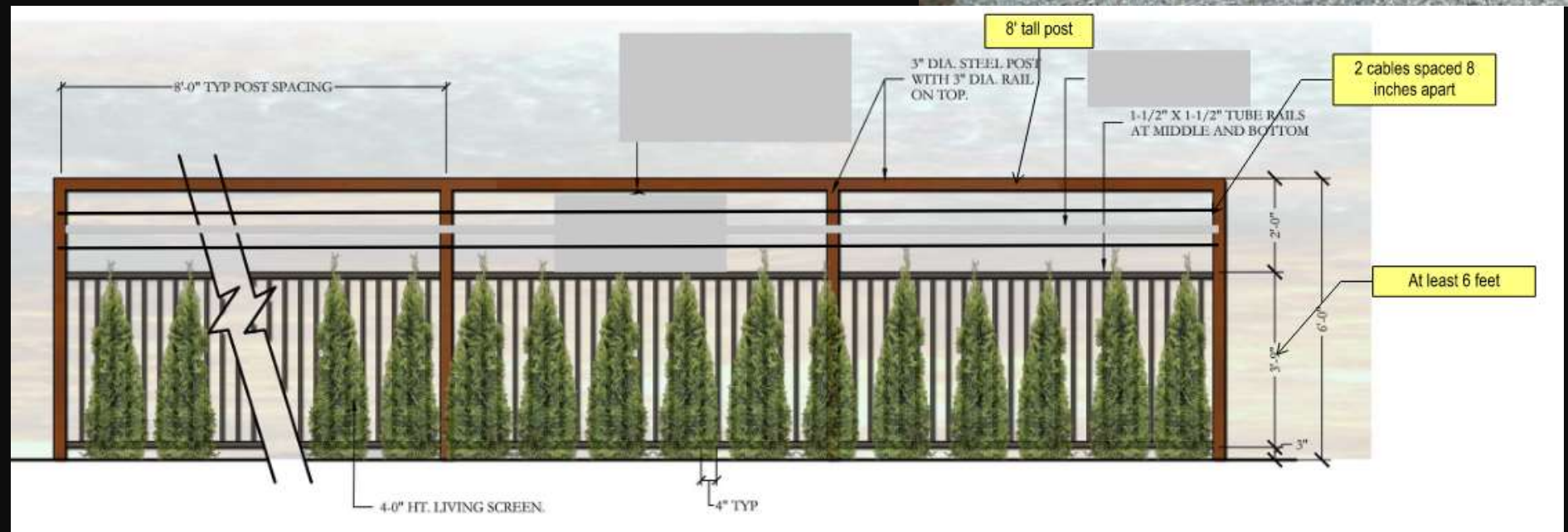
RA Development will fund low pressure line down Lakewood Drive to serve Chisholm Summit

Gas would be available to business park – City's contribution is easement for the regulator station site



Atmos has committed to use same screening fence and landscaping proposed for Lakewood for consistency

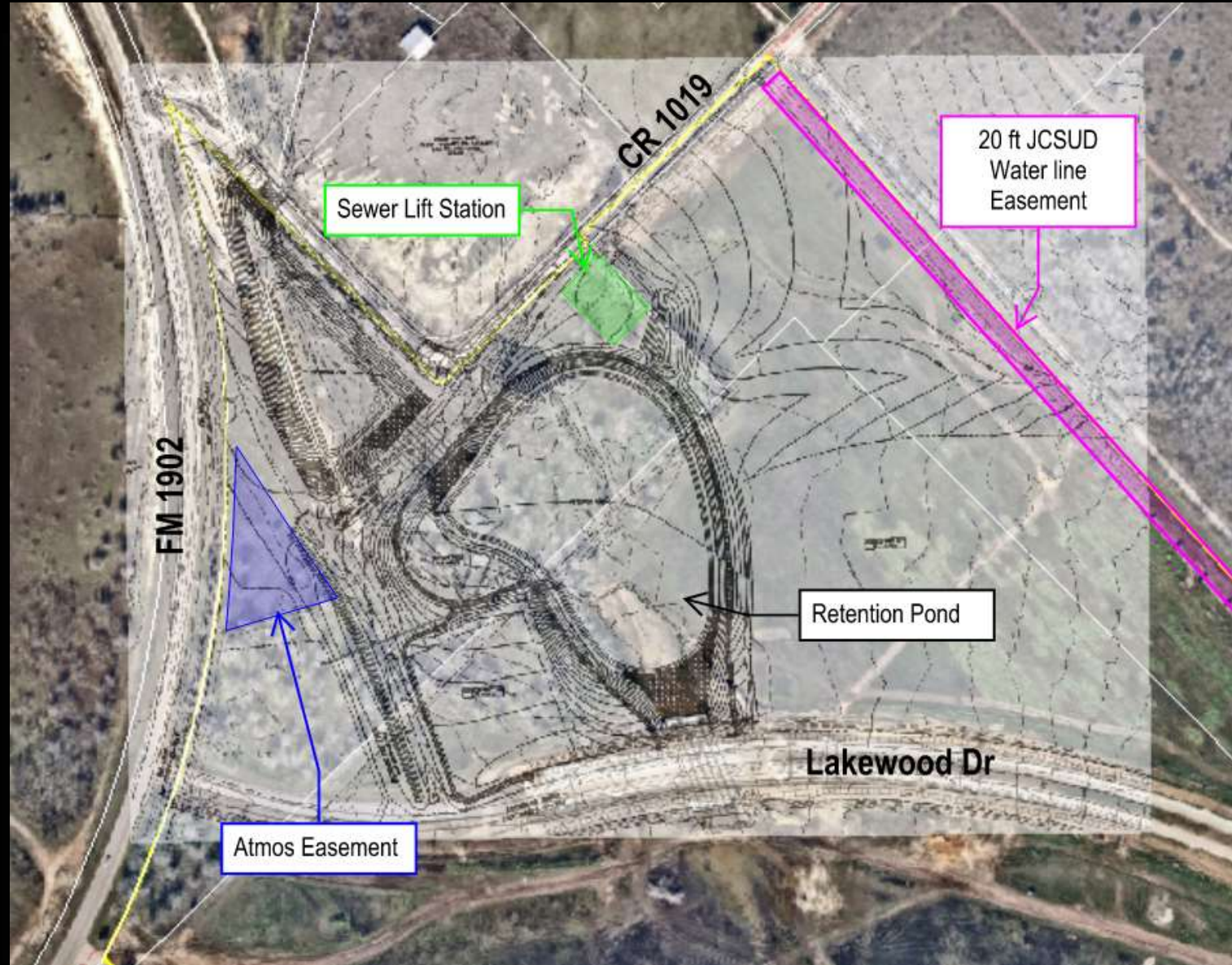
- At least 6 ft tall ornamental fence with 3 in diameter steel posts to 8 ft tall
- Two cables spaced 8 inches apart at top
- Landscape to be consistent with Lakewood Drive and the sanitary sewer lift station



Construction anticipated to begin in July 2024 with a 45-day estimated duration, contingent upon weather

Action Requested

Approve a minute order ratifying the 4A Economic Development Corporation Board's action taken for a request for a permanent pipeline and aboveground facilities easement with Atmos Energy Corporation



Questions / Discussion

Michelle McCullough
Assistant Director / City Engineer
817-426-9616
mmccullough@burlesontx.com