

Hidden Vista Medical Office Building

Location:

- 4.05 acres
- Located north of the intersection of Hidden Vista Blvd. and Big Horn Dr.

Applicant:

Baird, Hampton and Brown, Inc.

Property Owner:

It's Right Here, LLC



Hidden Vista Medical Office Buildings

Company Name:

3 Medical Office Buildings

Property Information:

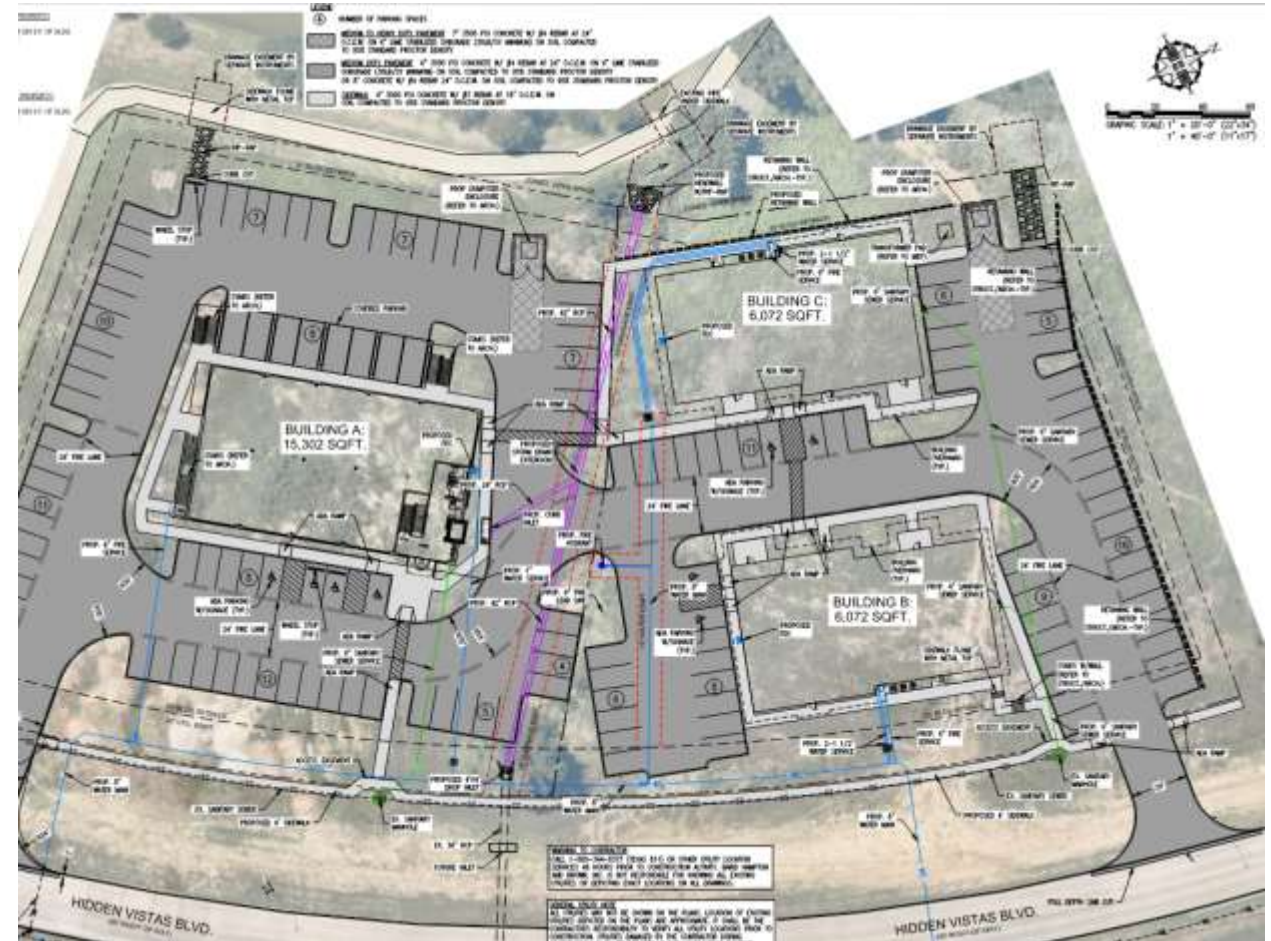
Current Zoning – PD

Site Plan Summary:

Building A– 15,302 Sq. Ft

Building B – 6,072 Sq. Ft

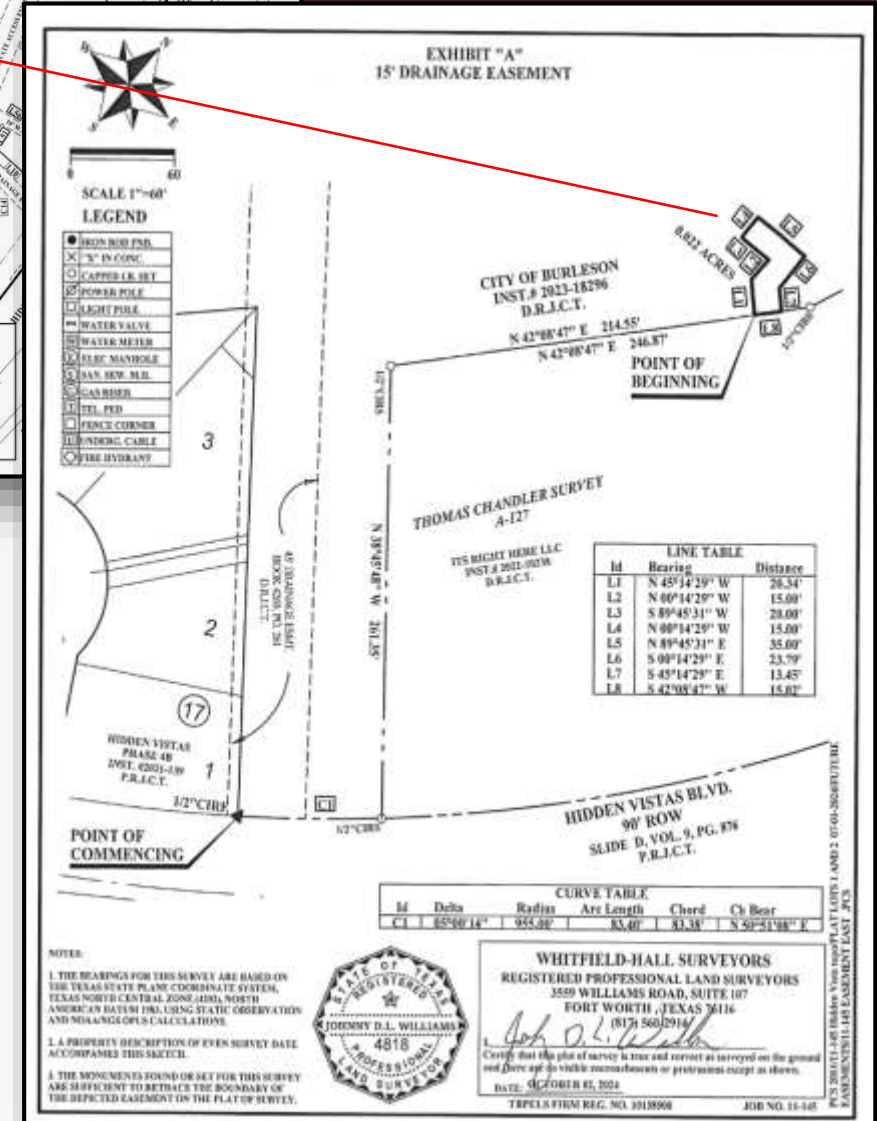
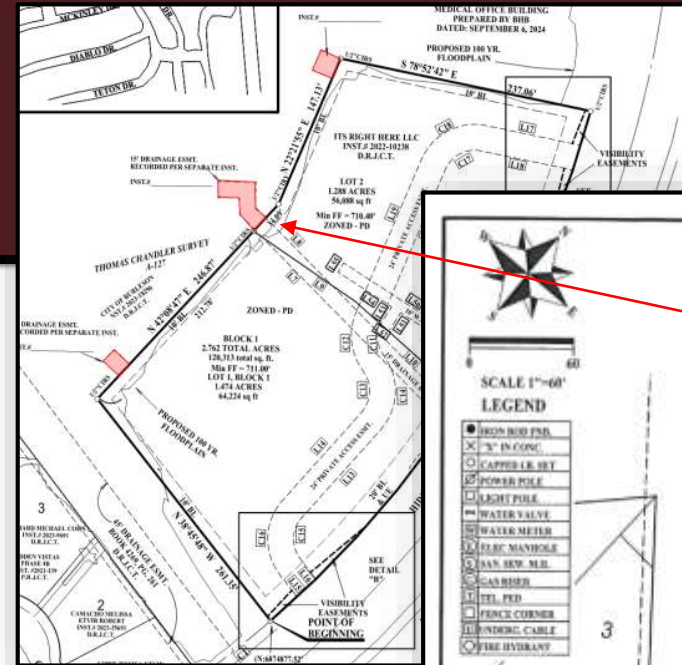
Building C – 6,072 Sq. Ft



Drainage Easements

Easements Requested on Public Parkland

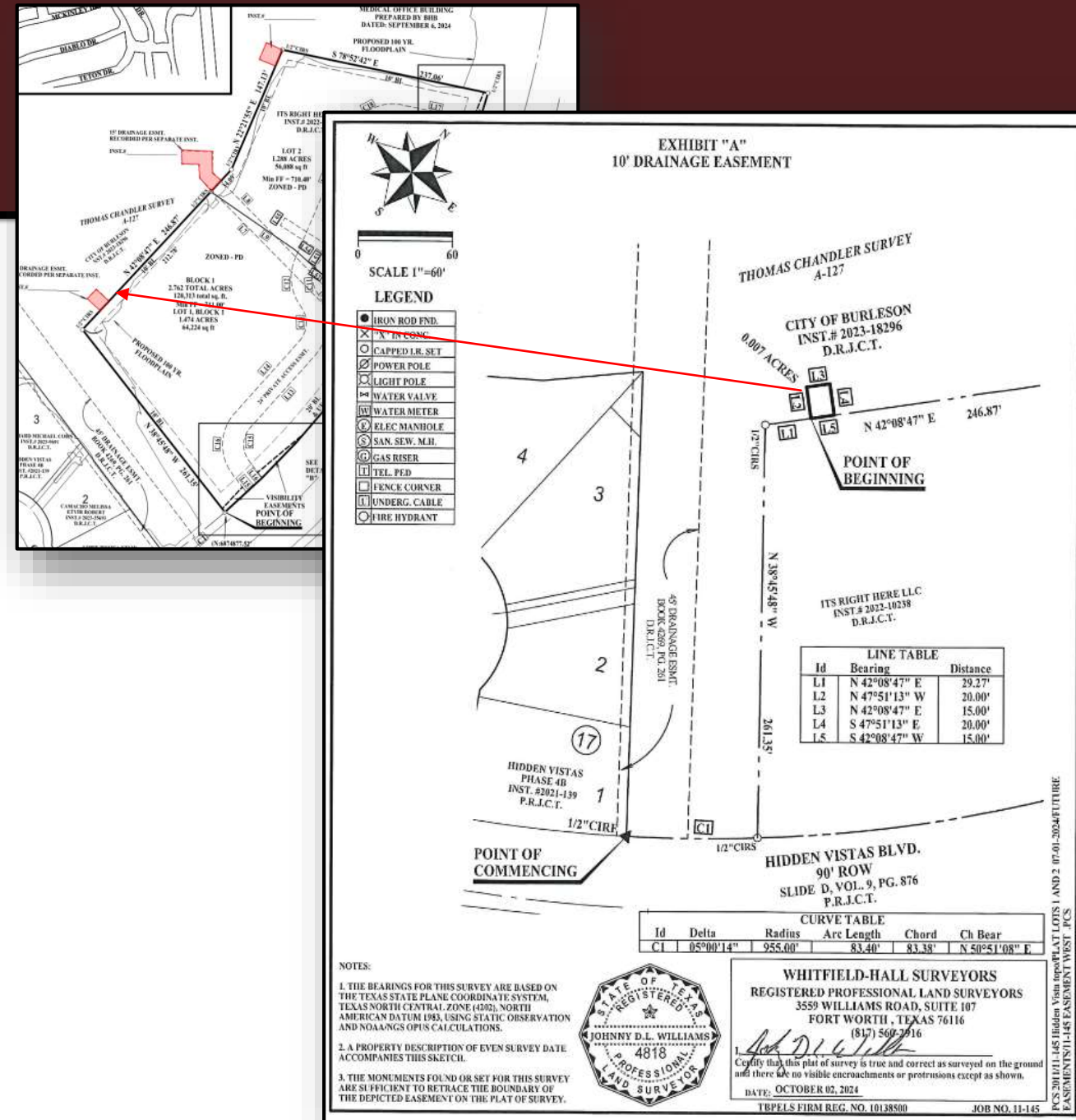
1. A 15' permanent public drainage easement to convey drainage from Hidden Vista Blvd. to the pond
2. 10' private drainage easement to be maintained by It's Right Here, LLC
3. 20' private drainage easement to be maintained by It's Right Here, LLC



Drainage Easements

Easements Requested on Public Parkland

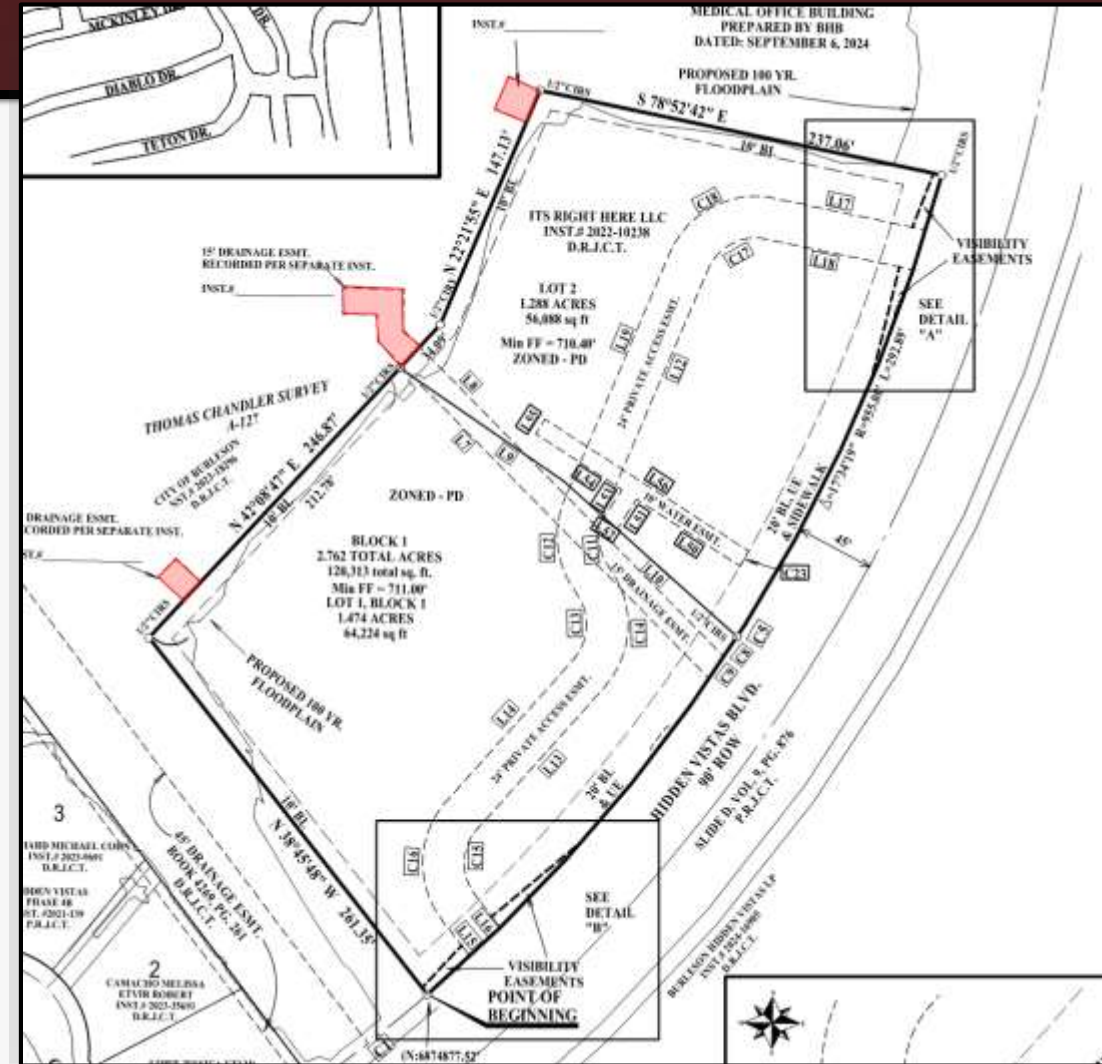
1. A 15' permanent **public** drainage easement to convey drainage from Hidden Vista Blvd. to the pond
2. 10' **private** drainage easement to be maintained by It's Right Here, LLC
3. 20' **private** drainage easement to be maintained by It's Right Here, LLC



Action Requested

The Actions Requested is to approve the following easements on park property -

1. 15-foot permanent public drainage easement
2. 10-foot permanent private drainage easement
3. 20-foot permanent private drainage easement



Questions / Comments

Staff Contact

Michelle McCullough
Development Services Deputy Director/City Engineer
817-426-9616
mmccullough@burlesontx.com