



Annexation Case 26-001

PRESENTED TO CITY COUNCIL– 6.15.26

TONY MCILWAIN

DEVELOPMENT SERVICES DIRECTOR

ANNEX – 9028 CR 1019

Location:

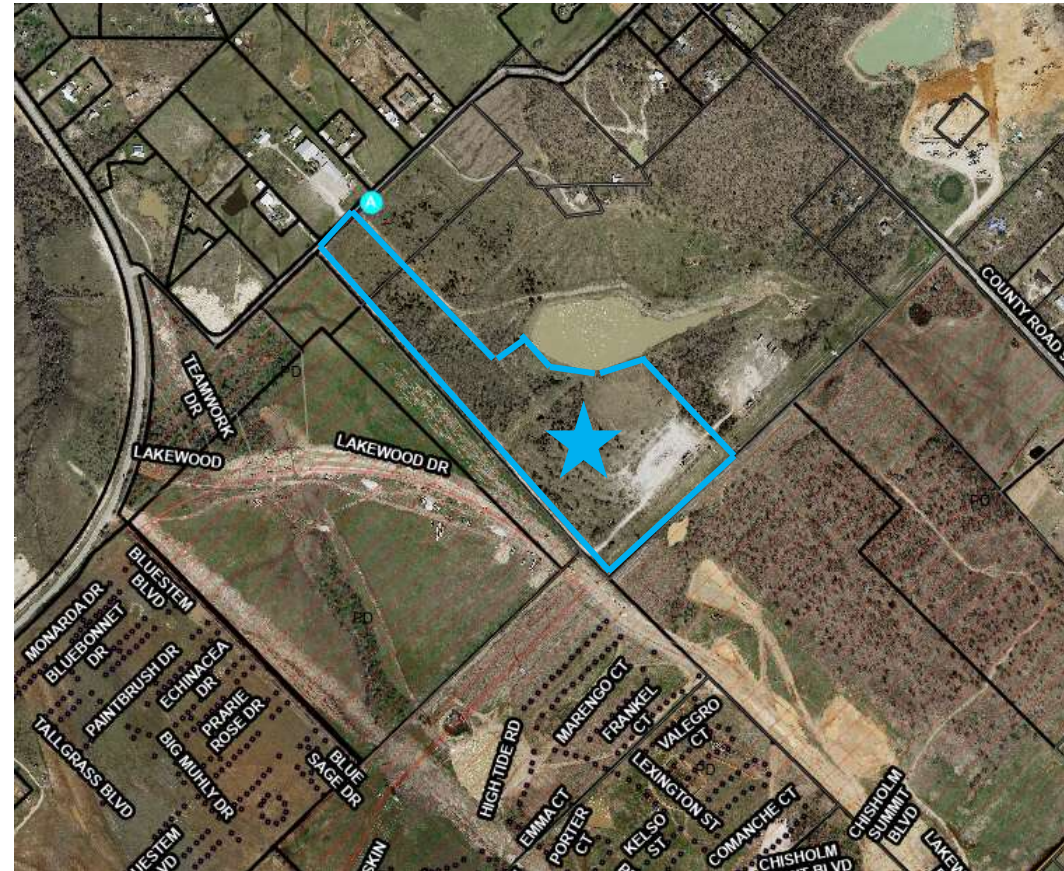
- 9028 CR 1019
- 32.252 acres

Applicant:

- Justin Bond (RA Development)
- David Shanks, MPC18,LLC (Owner)

Item for approval:

Voluntary Annexation (Case 26-001)

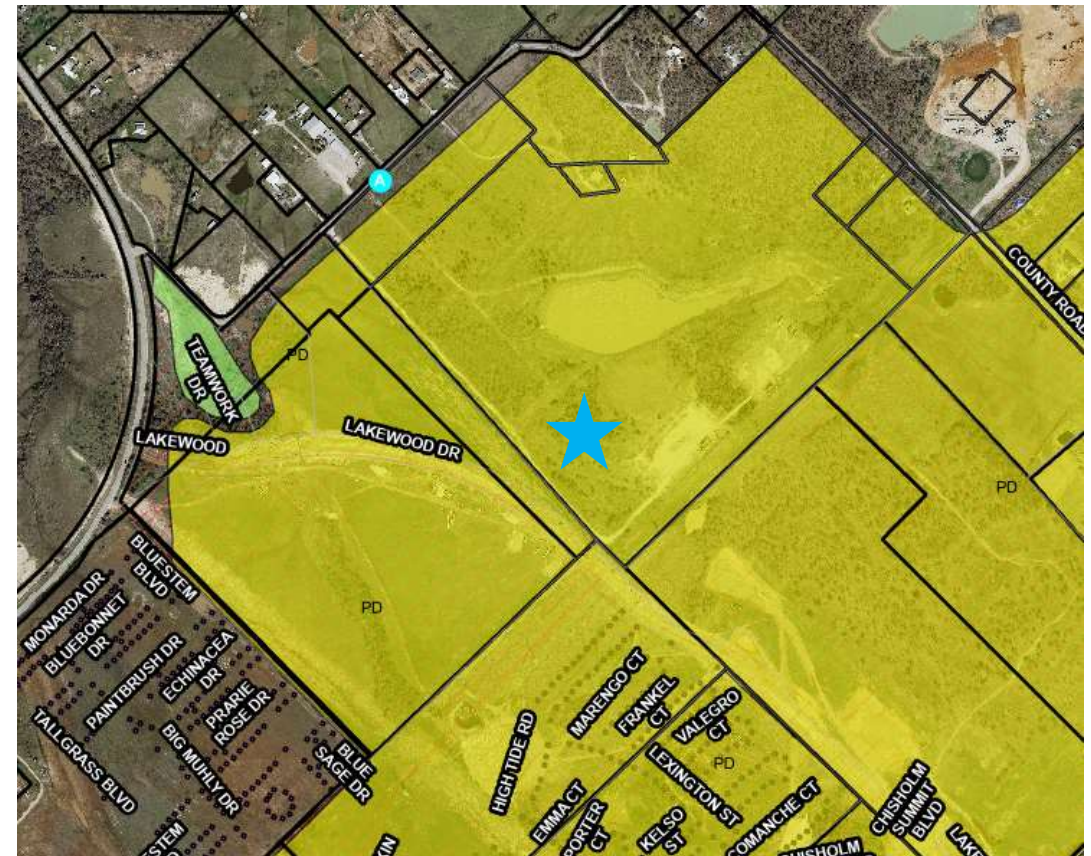


Zoning

ETJ – A, Agricultural upon Annexation

Comprehensive Plan

Neighborhoods



ANNEX – 9028 CR 1019

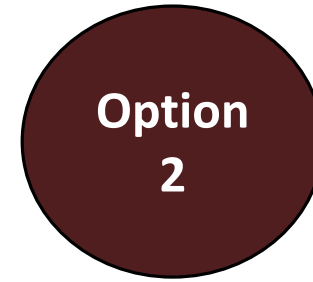
Public Hearing Notice:

- Published in the newspaper.
- Posted on City Website.
- Notified school districts and sent utility letters for annexation hearing.





**Recommend
Approval**



**Recommend
Denial**



Questions / Comments

Tony McIlwain
Development Services Director
tmcilwain@burlesontx.com
817.426.9684