



City of Burleson ADA Transition Plan Update

**Advisory Committee on
Persons with Disabilities**

January 15, 2026

THE CITY OF
BURLESON
TEXAS

Agenda

- Introductions
- Goals and Objectives
- ADA Background
- City of Burleson ADA Transition Plan
- Committee and Public Input
- Project Schedule
- Questions & Comments

Introductions



City Staff

- Burleson Staff



Consultant Team

- Kimley-Horn
- Daxbot



Goals and Objectives

ADA TP

Improve accessibility and connectivity for all citizens

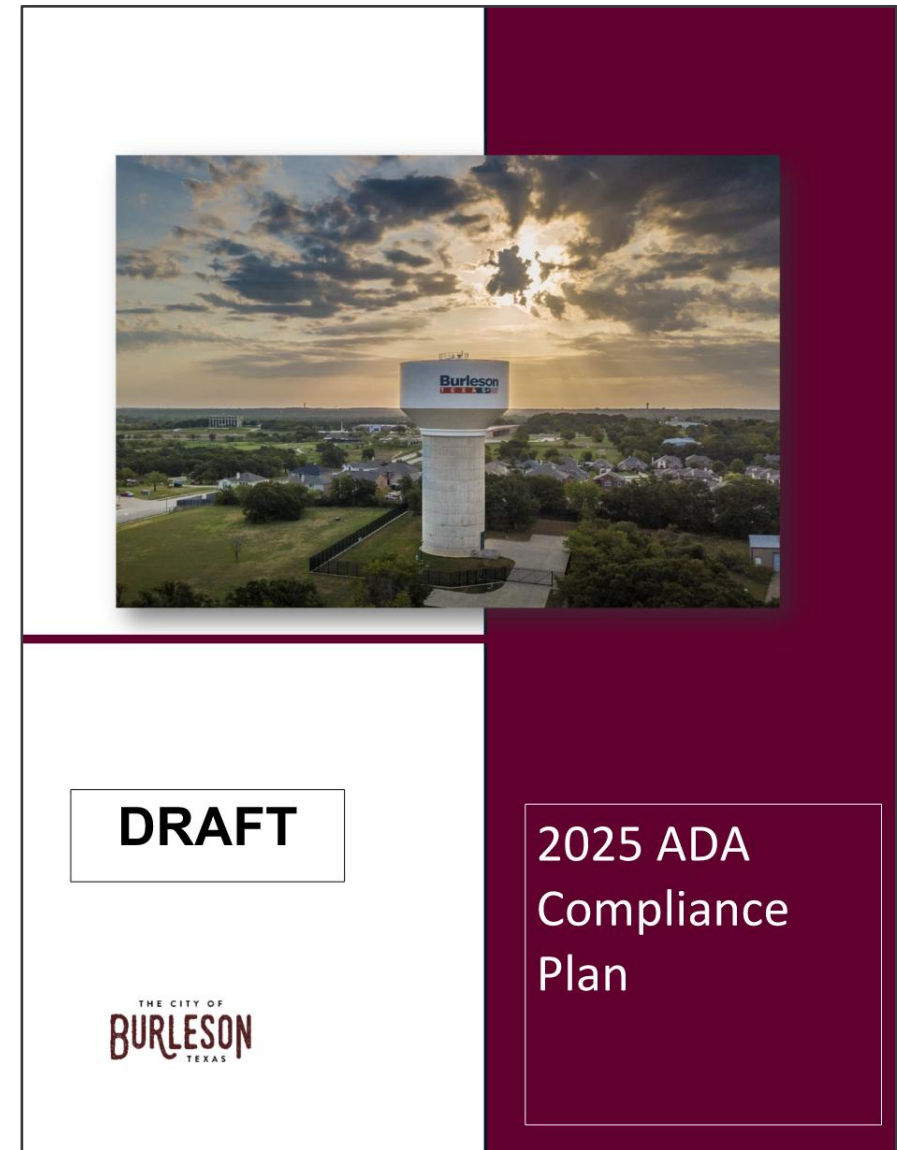
Encourage participation from public and disabled community

Educate City staff and the public on the requirements of the ADA

Develop a comprehensive list of accessibility barriers

City's Existing ADA Compliance Plan

- The City has previously developed an initial ADA Compliance Plan
 - Identified programs and facilities subject to ADA compliance
 - No program or facility evaluations have been completed
- Latest draft was prepared the end of last year
- This project will build upon the City's existing ADA Compliance plan to form a comprehensive ADA Self-Evaluation and Transition Plan



ADA Legal Background

- Architectural Barriers Act (ABA) of 1968
- Rehabilitation Act of 1973
 - Section 504 (49 CFR Part 27)
- Civil Rights Restoration Act of 1987
- Americans with Disabilities Act (ADA) of 1990
 - Title II Regulations (28 CFR Part 35)
- Elimination of Architectural Barriers
 - Texas Statute in Government Code, Chapter 469
 - Texas Department of Licensing and Regulation (TDLR)

ADA Background – Five Titles of ADA

Title I Employment

Title II **State & Local Governments (28 CFR Part 35)**

Title III Public Accommodations (retail, commercial, sports complexes, movie theaters, et al) (28 CFR Part 36)

Title IV Telecommunications

Title V Misc., including requirements for the U.S. Access Board to develop design guidelines

Title II – State and Local Governments

Basic Requirement

Must ensure that individuals with disabilities are not excluded from programs, services, and activities (pedestrian facilities are an example of a program)



Transition Plan Requirements

- Identify obstacles that limit the accessibility of programs or activities
 - **Physical barriers** at facilities in the public rights-of-way (sidewalks, curb ramps, pedestrian street crossings, signalized intersection equipment)
 - **Programmatic barriers** for services, activities, communication, and digital elements
- Describe in detail the methods that will be used to make the facilities accessible.
- Specify a yearly schedule for implementing the accessibility improvements identified in the Transition Plan.
- Include the name or position of the official who is responsible for implementing the Transition Plan.

ADA/504 Coordinator

- Person must be familiar with agency operations
- Person must be trained or knowledgeable in ADA and other nondiscrimination laws (Title VI, Title VII)
- Person must have sufficient authority, time, and resources to accomplish the duties
- Possible needs for others to have ADA responsibilities, but **ONE PERSON IN CHARGE**

ADA Coordinator

Cheryl Marthiljohni

ADA Coordinator and Director of Human Resources

225 W Renfro St

Burleson, TX 76028

Phone: 817-426-9640

Email: ADA@burlesontx.com

ADA Liaison Committee

- Internal: City Staff only
- Meet throughout the process of completing the Self-Evaluation and developing the Transition Plan
- Provide feedback on the project
- Continue to meet and actively participate after the completion of this project

ADA Policy Notice Requirements

- City must make information available to the public indicating that the ADA applies to City services, programs, and activities
- City must post this information in public areas or make it available in other ways deemed necessary
- City must make ADA Notice available in alternate formats (i.e., large print, Braille, audio, etc.)
- ADA Notice must include name and contact information of ADA Coordinator

ADA Policy Notice

- <https://www.burlesontx.com/2867/Americans-with-Disabilities-Act>

[Home](#) > [Departments](#) > [Human Resources](#) > [Americans with Disabilities Act](#)

Americans with Disabilities Act

American with Disabilities Act (ADA) and Accessibility

In accordance with the requirements of Title II of the Americans with Disabilities Act of 1990 ("ADA") and Section 504 of the Rehabilitation Act of 1973, the City of Burleson does not discriminate against individuals with disabilities in its services, programs, or activities. *For more information about ADA or Accessibility, to request an accommodation or to file a complaint, please see the information below or contact the **ADA Coordinator**.*

- [ADA Public Notice \(English / Español\)](#)

ADA Policy Notice



PUBLIC NOTICE UNDER THE AMERICANS WITH DISABILITIES ACT AND SECTION 504

In accordance with the requirements of title II of the Americans with Disabilities Act of 1990 ("ADA") and Section 504 of the Rehabilitation Act of 1973 ("Section 504"), the City of Burleson ("the City") will not discriminate against qualified individuals with disabilities on the basis of disability in its services, programs, or activities.

Employment: The City does not discriminate on the basis of disability in its hiring or employment practices and complies with all regulations set forth by the U.S. Equal Employment Opportunity Commission under title I of the ADA and Section 504.

Effective Communication: The City will generally, upon request, provide appropriate aids and services leading to effective communication for qualified persons with disabilities so they can participate equally in the City's programs, services, and activities, including qualified sign language interpreters, documents in Braille, and other ways of making information and communications accessible to people who have speech, hearing, or vision impairments.

Modifications to Policies and Procedures: The City will make all reasonable modifications to policies and programs to ensure that people with disabilities have an equal opportunity to enjoy all of its programs, services, and activities. For example, individuals with service animals are welcomed in the City's offices, even where pets are generally prohibited.

Anyone who requires an auxiliary aid or service for effective communication, or a modification of policies or procedures to participate in a program, service, or activity of the City, should contact the **ADA Coordinator** as soon as possible but no later than 48 hours before the scheduled event.

The ADA does not require the City to take any action that would fundamentally alter the nature of its programs or services, or impose an undue financial or administrative burden.

Complaints that a program, service, or activity of the City is not accessible to persons with disabilities should be directed to the **ADA Coordinator**.

ADA Coordinator Name and Contact Information:

Name: Cheryl Marthiljohni, Director of Human Resources
Address: The City of Burleson, 141 W Renfro Street, Burleson, TX 76028-4296
Email: ADA@burlesontx.com
Phone: 817-426-9640
Fax: 817-295-9414

The City will not place a surcharge on a particular individual with a disability or any group of individuals with disabilities to cover the cost of providing auxiliary aids/services or reasonable modifications of policy, such as retrieving items from locations that are open to the public but are not accessible to persons who use wheelchairs.

burlesontx.com | 817.426.9640 | 141 W. Renfro Street, Burleson, Texas 76028

Revised: July 2, 2025



AVISO PÚBLICO EN VIRTUD DE LA LEY DE ESTADOS UNIDOS CON DISCAPACIDADES Y LA SECCIÓN 504

De conformidad con los requisitos del título II de la Ley de Estadounidenses con Discapacidades de 1990 («ADA») y la sección 504 de la Ley de Rehabilitación de 1973 («Sección 504»), la ciudad de Burleson («la ciudad») no discriminará a las personas cualificadas con discapacidades por motivos de discapacidad en sus servicios, programas o actividades.

Empleo: La Ciudad no discrimina por motivos de discapacidad en sus prácticas de contratación o empleo y cumple con todas las regulaciones establecidas por la Comisión para la Igualdad de Oportunidades en el Empleo de los Estados Unidos en virtud del título I de la ADA y la Sección 504.

Comunicación eficaz: Por lo general, la Ciudad proporcionará, previa solicitud, las ayudas y servicios adecuados que permitan una comunicación eficaz a las personas cualificadas con discapacidades, de modo que puedan participar en igualdad de condiciones en los programas, servicios y actividades de la Ciudad, incluyendo intérpretes de lengua de signos cualificados, documentos en braille y otros medios para que la información y las comunicaciones sean accesibles a las personas con discapacidades del habla, la audición o la visión.

Modificaciones de las políticas y procedimientos: La ciudad realizará todas las modificaciones razonables en sus políticas y programas para garantizar que las personas con discapacidades tengan las mismas oportunidades de disfrutar de todos sus programas, servicios y actividades. Por ejemplo, las personas con animales de servicio son bienvenidas en las oficinas de la ciudad, incluso en aquellos lugares donde normalmente se prohíben las mascotas.

Cualquier persona que necesite ayuda o servicios auxiliares para comunicarse de manera eficaz, o una modificación de las políticas o procedimientos para participar en un programa, servicio o actividad de la ciudad, debe ponerse en contacto con **el coordinador de la ADA** lo antes posible, pero no más tarde de 48 horas antes del evento programado.

La ADA no exige a la ciudad que tome ninguna medida que altere fundamentalmente la naturaleza de sus programas o servicios, ni que imponga una carga financiera o administrativa excesiva.

Las quejas sobre la inaccesibilidad de un programa, servicio o actividad de la ciudad de e deben dirigirse al **coordinador de la ADA**.

Nombre y datos de contacto del coordinador de la ADA:

Nombre: Cheryl Marthiljohni, Directora de Recursos Humanos
Dirección: Ciudad de Burleson, 141 W Renfro Street, Burleson, TX 76028-4296
Correo electrónico: ADA@burlesontx.com
Teléfono: 817-426-9640
Fax: 817-295-9414

La ciudad no aplicará ningún recargo a una persona con discapacidad en particular ni a ningún grupo de personas con discapacidad para cubrir el costo de proporcionar ayudas o servicios auxiliares o modificaciones razonables de la política, como la recuperación de artículos de lugares abiertos al público pero que no son accesibles para personas que utilizan sillas de ruedas.

burlesontx.com | 817.426.9640 | 141 W. Renfro Street, Burleson, Texas 76028

Revisado: 2 de julio de 2025

Grievance Procedure Requirements

- Description of how and where a complaint under Title II may be filed
- Statement notifying potential complainants that alternative means of filing will be available
- Description of the timeframes and processes to be followed by the complainant and the City
- Information on how to appeal an adverse decision
- Statement of how long complaint files will be retained

Grievance Procedure

- <https://www.burlesontx.com/2867/Americans-with-Disabilities-Act>

ADA Complaints:

Any person, group of persons or their authorized representative may file a complaint of ADA accessibility if such person believes that city services, programs, or activities were not accessible.

- ADA Accessibility Complaint Form ([English](#) / [Español](#))
- ADA Accessibility Complaint Process ([English](#) / [Español](#))

Complaints may be filed within 60 calendar days of the incident by completing the ADA Complaint Form and sending to the city in one of the following methods:

- Electronically (online) - ADA@burlesontx.com, or
- In person or mail - City of Burleson - ADA Coordinator, 141 W. Renfro Street, Burleson, TX 76028-4296, or
- Fax - [817-295-9414](tel:817-295-9414)

Grievance Procedure

THE CITY OF
BURLESON
TEXAS

The Americans with Disabilities Act (“ADA”) and Section 504 Complaint Form

This ADA and Section 504 Complaint form will be used by the City of Burleson to document and address a complaint for qualified individual(s) with a disability in accessing the City’s programs, services, and/or activities. **For more information, including understanding your rights, please visit <https://www.burlesontx.com/2867/Americans-with-Disabilities-Act>.**

When completed, return this signed form using one of the following methods:

Mail or In-Person:	City of Burleson Attn: ADA Coordinator 141 W Renfro St Burleson, TX 76028
Email:	ADA@burlesontx.com
Fax:	(817) 295-9414

For assistance or if you require another accessible format, please call the ADA Coordinator at (817) 426-9640 or email ADA@burlesontx.com.

COMPLAINANT INFORMATION

Last Name:	First Name:
Mailing Address:	
City/State/Zip Code:	Phone #:
Alternate Telephone #:	
Email Address:	

BASIS OF COMPLAINT

Please mark all that apply below to indicate the basis of your complaint:

Accommodation Request Program/Service/Activity Facility Accessibility

Other (please specify) _____

List the date and time of the incident.

List the location or facility involved.

Describe the complaint/incident with as much detail as possible. Add additional pages as necessary.

1

THE CITY OF
BURLESON
TEXAS

The Americans with Disabilities Act (“ADA”) and Section 504 Complaint Form

Names of individuals (witnesses, employees, or others) whom we may contact for additional information to support or clarify your complaint. (Attach additional pages, if needed).

Name	Mailing address and/or email address	Telephone
		()
		()
		()
		()

Has there been any attempt to resolve the matter through a City department? If yes, please describe the effort and provide the name, position, and date of discussion.

Briefly explain what solution or remedy you are seeking.

Please provide any additional information and/or photographs, if applicable, that you believe will assist in the review of this complaint.

THE CITY CANNOT ACCEPT AN UNSIGNED COMPLAINT. PLEASE PRINT YOUR NAME, SIGN, AND DATE THE COMPLAINT FORM BELOW:

Complainant's Printed Name:	Date:
Complainant's Signature:	
Printed name of person preparing complaint (if different from the complainant):	
Relationship to the complainant:	

For Office Use Only

Date Complaint Received:	Case Number:
Received By: _____	Date Referred: _____

2

Scope of Services – Major Tasks

Task 1 and Task 7: Project Management and Meetings

Task 2: Services, Policies, Practices, Programs, and Activities
(Programmatic) Review

Tasks 3-5: Facilities and Public Rights-of-Way Review

Task 6: Transition Plan Update

Task 8: Public Outreach

Task 9: Staff Training

Task 10: Esri Dashboard Development

Task 2 – PSA (Programmatic) Review

Summarize available online information and meet with City staff to perform ADA Compliance evaluations

- Programs, services, activities
- Policies, processes, procedures
- Lease agreements
- Contracts
- Department-specific handbooks
- Meeting agendas and minutes
- Online forms
- Applications
- PDF forms
- Checklists
- Videos
- Employment practices
- Ordinances
- Emergency Management Plan

Kimley-Horn to provide a data request list. City to follow up with available information and points of contact for further discussions.

Tasks 3-5: Facilities Review

Facilities for Evaluation

- 17 Buildings and Parking Lots
- 21 Parks and Parking Lots
- 25 Signalized Intersections
- 218 linear miles of Sidewalk Corridors
- Unsignalized intersections, driveways, and alleys
 - Includes curb ramps, pedestrian street crossings

Buildings

Location Name	Property Address
City Hall	141 W Renfro Street
City Hall Annex	135 W. Ellison, Suite 109
Senior Activity Center	216 SW Johnson Avenue
Animal Shelter	775 SE John Jones Drive
Burleson Visitors Center	124 W Ellison Street
Municipal Court	1131 SW Wilshire Boulevard
Hidden Creek Golf Course	555 E Hidden Creek Pkwy
Service Center	725 S.E. John Jones Road
Library	248 SW Johnson Avenue

Buildings

Location Name	Property Address
Burleson Memorial Cemetery	580 Memorial Plaza
Burleson Recreation Center (BRiCK)	550 NW Summercrest Boulevard
Russell Farm	405 W County Road 714
Mayor Vera Calvin Plaza in Old Town	141 W Renfro Street
Fire Station #3	245 Lakewood Drive
Fire Station #16	250 E Hidden Creek Parkway
Fire Station #1	828 SW Alsbury Blvd
Police Department (Exterior Only)	1161 SW Wilshire Blvd

Parks

Location Name	Property Address
Bailey Lake Park	280 W Hidden Creek Parkway
Bartlett Park and Soccer Complex	550 NW Summercrest Boulevard
Warren Park	301 SW Johnson Avenue
Chisenhall Sports Complex and Trails	500 W Hidden Creek Parkway
Centennial Park	308 NE McAlister Road
Burleson Bark Park	616 Memorial Plaza
Meadowcrest Park	1050 Barracuda Drive
Mistletoe Hill Park	960 NE McAlister Road
Oak Valley Park North & Shared-Use Path	804 Parkridge Boulevard
Cedar Ridge Park	716 Cumberland Drive
Cindy Park	205 NE Cindy Lane

Parks

Location Name	Property Address
Clark Park	124 N Clark Street
Claudia's Playground	933 West Bend Boulevard
Elk Ridge Park	1016 Dorsey Street
Heberle Park and Trail	812 Tyler Court
Hidden Vistas Park	950 Hidden Vistas Boulevard
Prairie Timber Park	801 Prairie Timber Road
Robert Joseph Park	2780 Greenridge Drive
Veterans Memorial Park	298 E Renfro Street
Wakefield Heights Park	704 Elizabeth Drive
Willow Creek Park	151 Hawks Ridge Trail

Public Rights-of-Way and Paved Trails

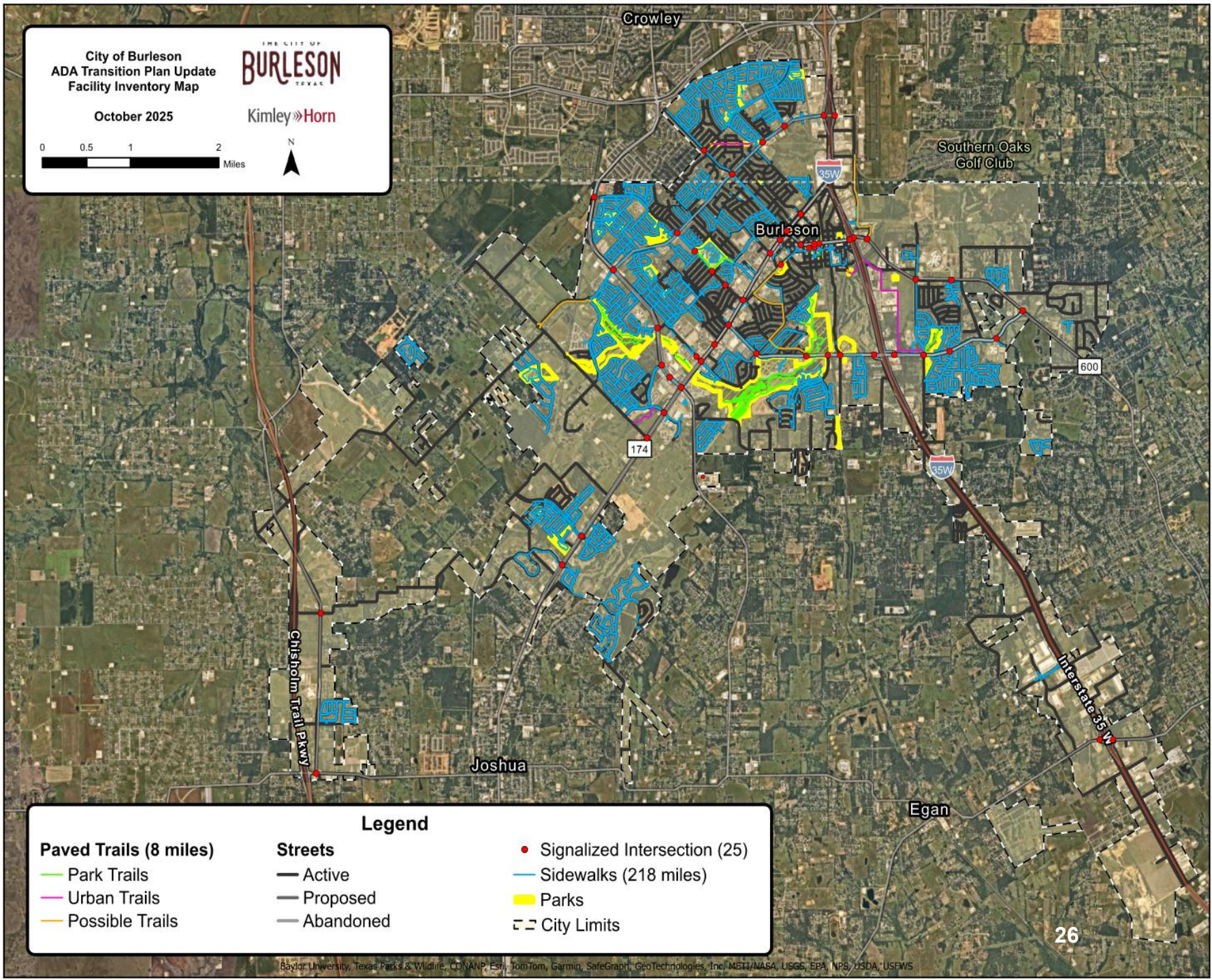
City of Burleson
 ADA Transition Plan Update
 Facility Inventory Map
 October 2025

THE CITY OF
BURLESON
 TEXAS

Kimley»Horn

0 0.5 1 2 Miles

N



Legend

Paved Trails (8 miles)	Streets	● Signalized Intersection (25)
— Park Trails	— Active	— Sidewalks (218 miles)
— Urban Trails	— Proposed	■ Parks
— Possible Trails	— Abandoned	⊞ City Limits

Park and Building Data Collection



An integrated, fully customizable data collection field form



Integrated digital camera



Photographs and data that synchronize in real time with GIS



Reduction in human error with in-field quality control checks



Data Collection Process



Features & photos are uploaded to the cloud

Export features & photos to a GIS database



Photos are attached to GIS features as attributes

Accurate GIS layer with photos and field evaluation data



Public Rights of Way Data Collection – Daxbot Technology

- Semi-autonomous robot data collection
- GPS and laser measurement tools
- High-resolution cameras

Kimley-Horn to coordinate with City regarding data collection schedule, logistics, and details



Public Rights of Way Data Collection – Daxbot Technology

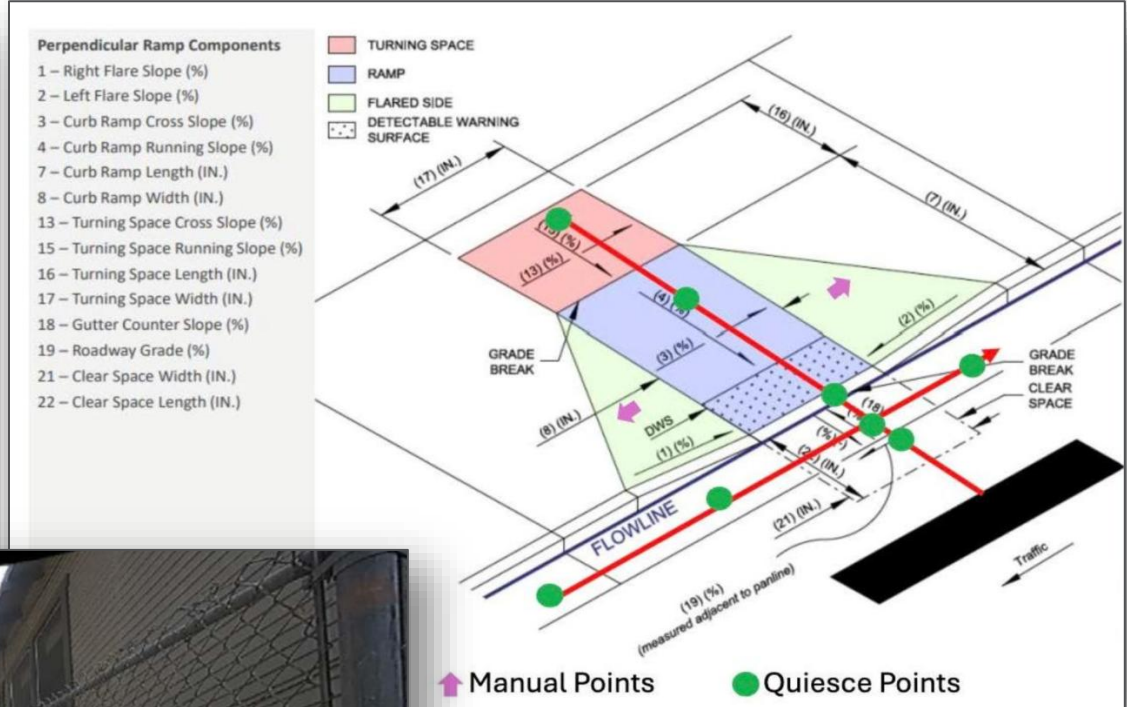
Map View Slab View Path View List View Jira Tickets

Path: 477
Slab: 18
Collected On: Smoky
Trajectory Length: 160.477 m
Pitch: -0.015°
Roll: 1.364°
Heading: -176.970°
Slab L.Q.E.: 100.0%

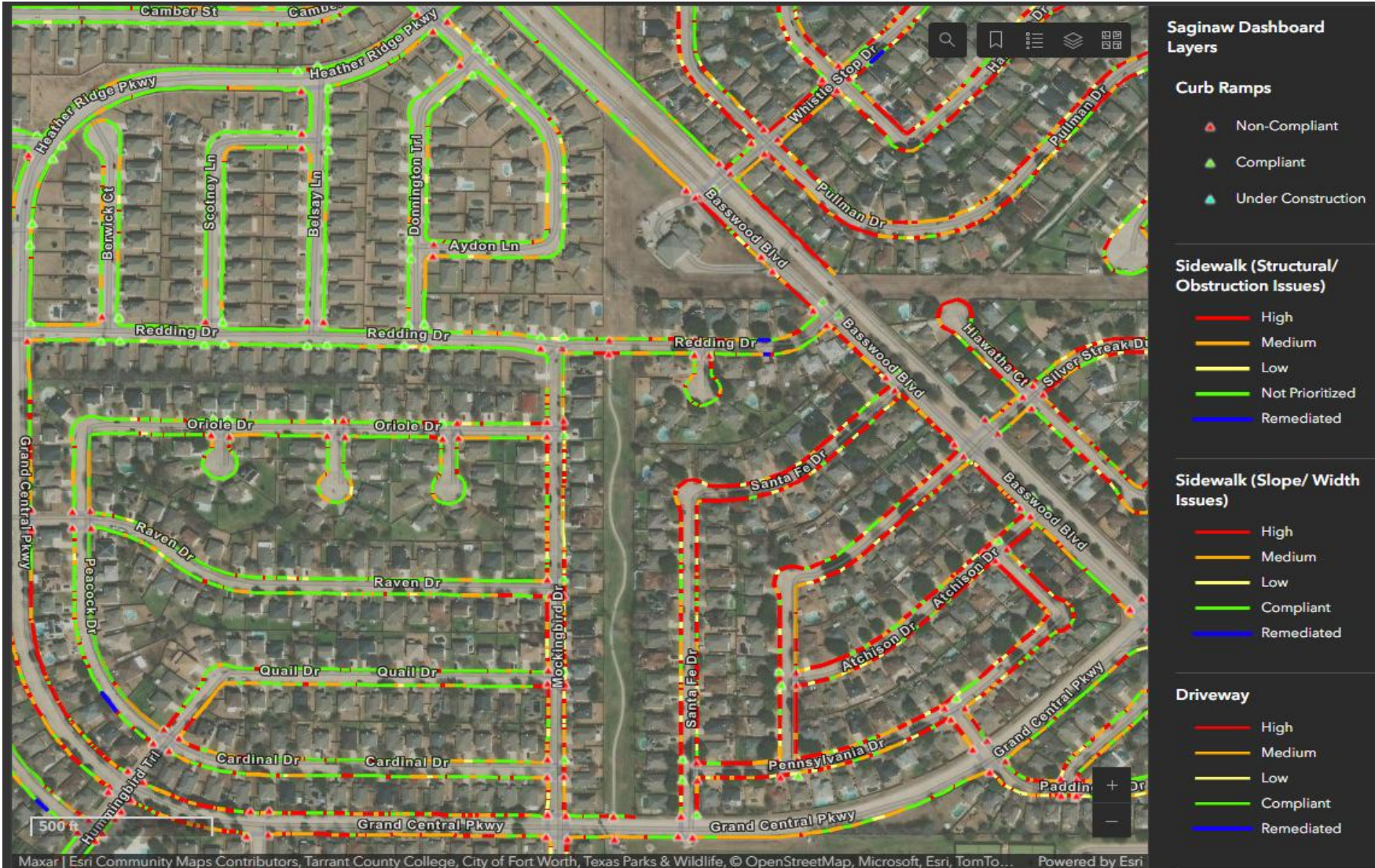
Vertical Obstruction: Vegetation X
Slab Width (m): 50.760 X
Travel Path Width (m): 28.267 X
Primary Surface Material: Concrete X
Damage Area (sq ft): 12,700 X
Curb Ramp Slab Type: Not Applicable X
Slab Type Indicator: Not Applicable X

Vertical Displacement (mm)
Vertical Displacement RMS (mm)

Power N/A (e)
Vertical Obstructions (v)
Slab Width (w)
Travel Path Width (t)
Primary Surface Material (r)
Damage Area (d)
Curb Ramp Slab Type (c)
Slab Type Indicator (s)



ADA Transition Plan Database



Sample Building and Parking Lot Issues

- **Parking**

- Accessible parking spaces that do not have access aisles or signage

- **Entrances**

- Excessive slopes to building entrances

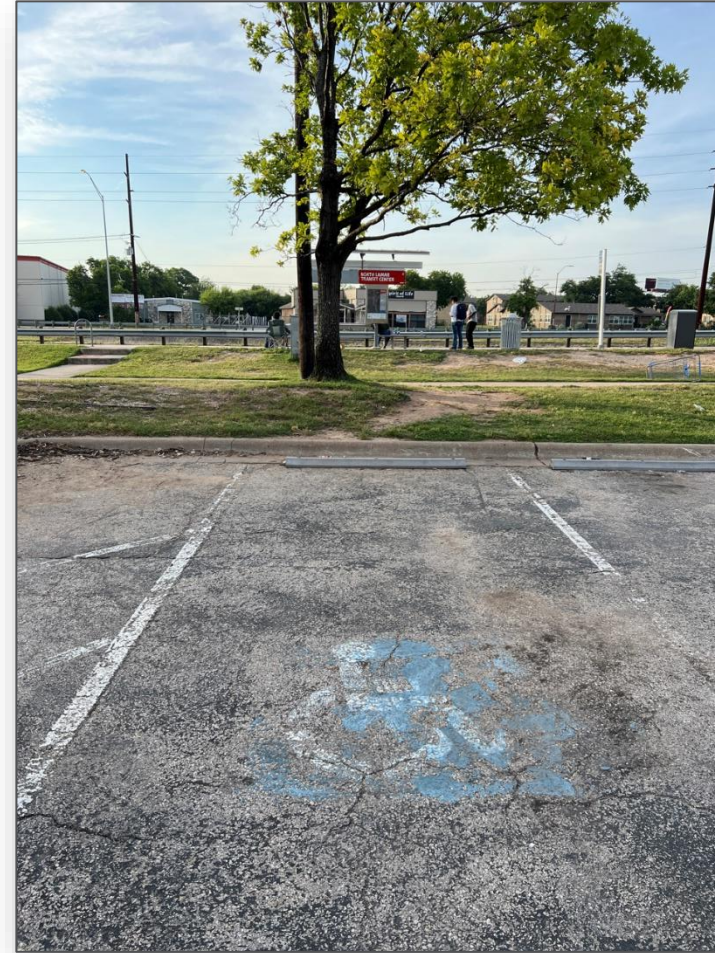
- **Exterior conditions**

- Building exterior amenities with no accessible routes to them

- **Interior conditions**

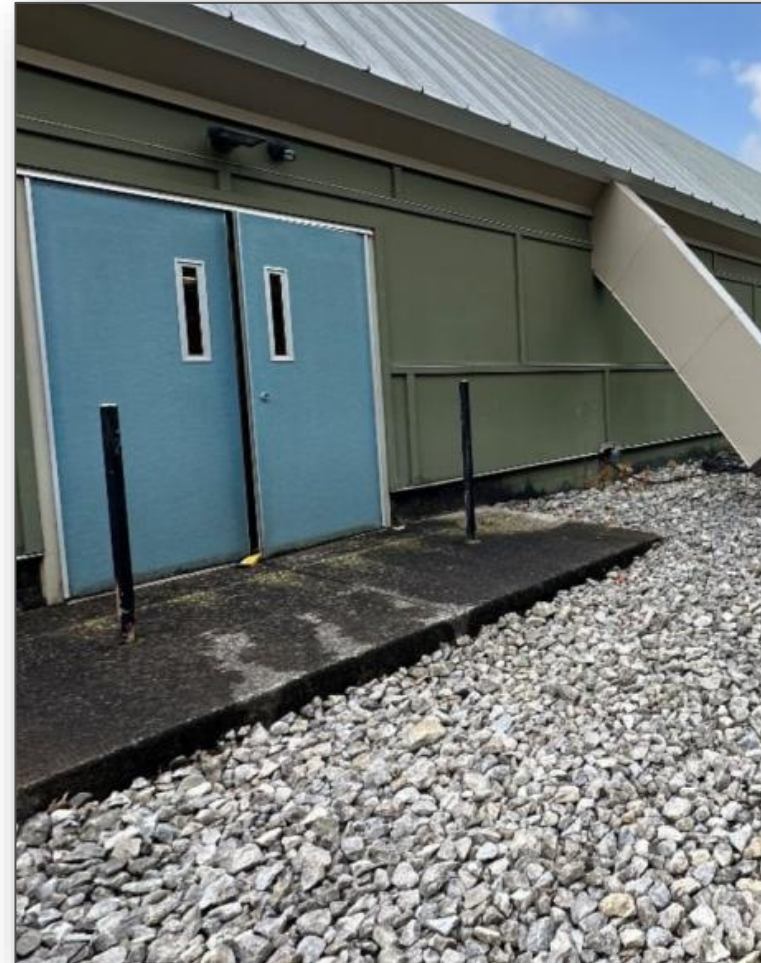
- Restrooms, high transaction counters, doorknobs instead of levers, narrow doors, no access to stages

Non-compliant Parking



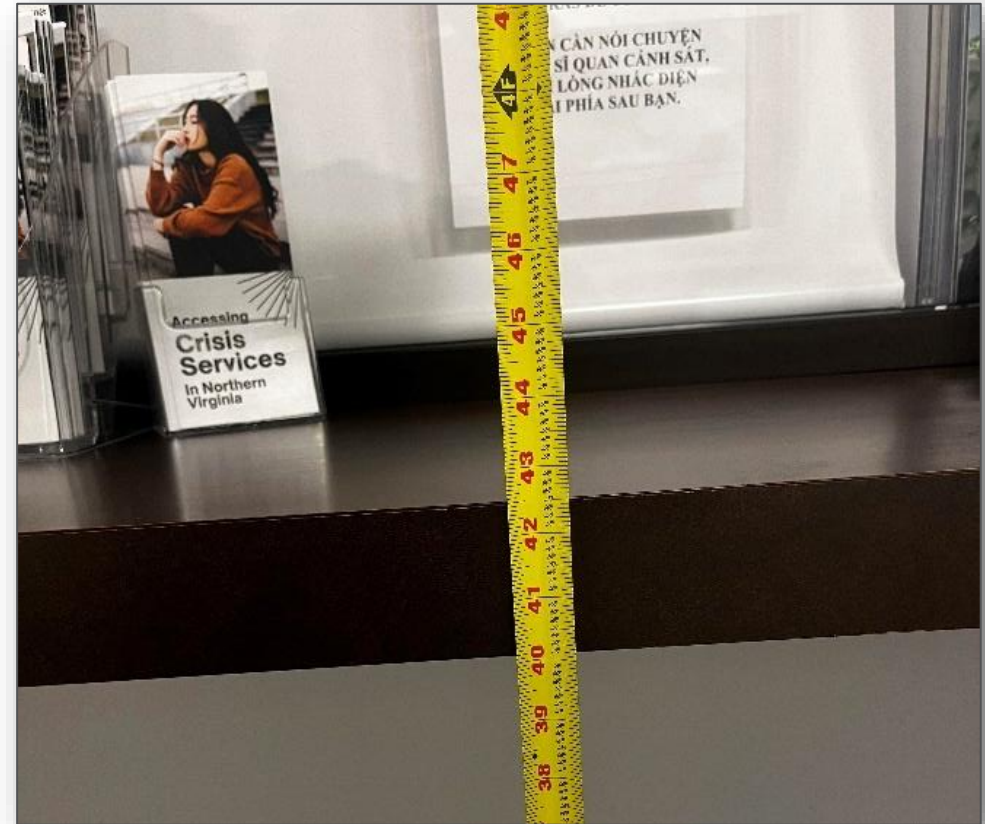
Note: Images are examples only and not from the City of Burleson

Non-compliant Entrances



Note: Images are examples only and not from the City of Burleson

Non-compliant Counters



Note: Images are examples only and not from the City of Burleson

Non-compliant Restrooms



Note: Images are examples only and not from the City of Burleson

Non-compliant Doors



Note: Images are examples only and not from the City of Burleson

Sample Park Issues

- **Parking**
 - Excessive slopes
 - Missing signage
- **Accessible routes**
 - Non-compliance surfaces
 - Missing access to amenities
- **Playgrounds/Ball Fields**
 - Missing access to play area or ball field
 - Non-compliant play area surfaces
- **Amenities**
 - Missing clear spaces or connections

No Access to Playgrounds



Note: Images are examples only and not from the City of Burleson

No Access to Amenities



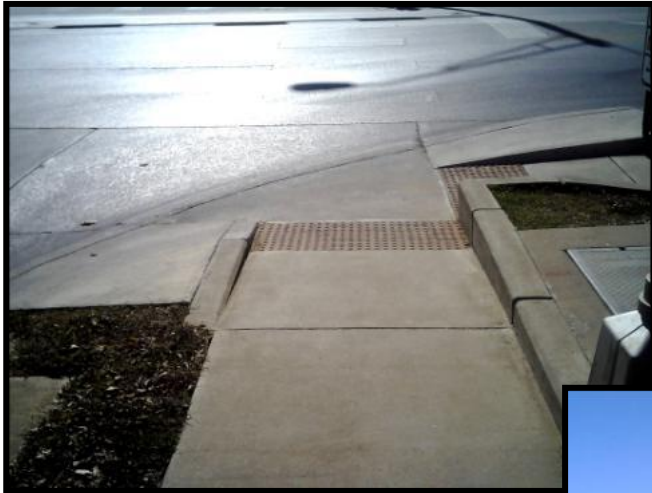
Note: Images are examples only and not from the City of Burleson

Example Sidewalk Barriers



*Note: Images are examples only
and not from the City of Burleson*

Example Curb Ramp and Signal Equipment Barriers



Note: Images are examples only and not from the City of Burleson

Task 6 – Transition Plan Update

Update the City's ADA Compliance Plan to a comprehensive ADA Self-Evaluation and Transition Plan

- Document administrative requirements
 - ADA/504 Coordinator's roles and responsibilities
 - Grievance policy, procedure, and complaint form
 - ADA Notice
- Document PSA review findings and possible solutions
- Develop multi-year budget for public rights-of-way and building/park accessibility improvements

Transition Plan Development



Prioritize improvements



Develop improvement costs



Develop implementation schedule



Sample Project Summary

Priority

Priority: 1

Remediation Cost

Location

Compliance Summary

Project Description for Signature Worksheet

Client: City of Metrolink
 Program: ADA Self-Evaluation and Transition Plan
 File No.: 06050003

Corridor: E Town East Blvd
 Project Name: Intersection of E Town East Blvd and Towne Centre Dr
 City: Metrolink

Item No.	Item Description	Quantity	Unit	Unit Price	Item Cost
TDCOT 000-0001	Concrete Curb (Paved)	0	LF	\$ 30.00	\$ -
TDCOT 001-0001	Concrete Sidewalk (4")	65	SF	\$ 58.00	\$ 3,475.00
TDCOT 001	Concrete Sidewalk (4")	2	EA	\$ 2,000.00	\$ 4,000.00
TDCOT 003-0001	Removal of Old Sign (Paint in Place)	0	SF	\$ 30.00	\$ -
TDCOT 004-0001	Removal of Old Sign (Stenciled)	107	SF	\$ 18.00	\$ 1,926.00
TDCOT 004-0002	Reconstruction of Pedestrian Path	2	EA	\$ 2,000.00	\$ 4,000.00
TDCOT 007	Sign Kit (Paint Mark & Mark)	0	LF	\$ 4.00	\$ -
TDCOT 008-0001	Sign Kit (Paint Mark, 1/2" x 1/2" (24") (24")	0	EA	\$ 10.00	\$ -
TDCOT 008-0001	Reconstruction of Pedestrian Path (Sign)	0	EA	\$ 800.00	\$ -
TDCOT 008-0002	Reconstruction of Pedestrian Path (Sign)	2	EA	\$ 400.00	\$ 800.00
TDCOT 008-0003	Reconstruction of Pedestrian Path (Sign)	0	EA	\$ 200.00	\$ -
TDCOT 008-0004	Reconstruction of Pedestrian Path (Sign)	0	EA	\$ 200.00	\$ -
TDCOT 008-0005	Reconstruction of Pedestrian Path (Sign)	0	EA	\$ 200.00	\$ -
TDCOT 008-0006	Reconstruction of Pedestrian Path (Sign)	0	EA	\$ 200.00	\$ -
TDCOT 008-0007	Reconstruction of Pedestrian Path (Sign)	0	EA	\$ 200.00	\$ -
TDCOT 008-0008	Reconstruction of Pedestrian Path (Sign)	0	EA	\$ 200.00	\$ -
TDCOT 008-0009	Reconstruction of Pedestrian Path (Sign)	0	EA	\$ 200.00	\$ -
TDCOT 008-0010	Reconstruction of Pedestrian Path (Sign)	0	EA	\$ 200.00	\$ -
TDCOT 008-0011	Reconstruction of Pedestrian Path (Sign)	0	EA	\$ 200.00	\$ -
TDCOT 008-0012	Reconstruction of Pedestrian Path (Sign)	0	EA	\$ 200.00	\$ -
TDCOT 008-0013	Reconstruction of Pedestrian Path (Sign)	0	EA	\$ 200.00	\$ -
TDCOT 008-0014	Reconstruction of Pedestrian Path (Sign)	0	EA	\$ 200.00	\$ -
TDCOT 008-0015	Reconstruction of Pedestrian Path (Sign)	0	EA	\$ 200.00	\$ -
TDCOT 008-0016	Reconstruction of Pedestrian Path (Sign)	0	EA	\$ 200.00	\$ -
TDCOT 008-0017	Reconstruction of Pedestrian Path (Sign)	0	EA	\$ 200.00	\$ -
TDCOT 008-0018	Reconstruction of Pedestrian Path (Sign)	0	EA	\$ 200.00	\$ -
TDCOT 008-0019	Reconstruction of Pedestrian Path (Sign)	0	EA	\$ 200.00	\$ -
TDCOT 008-0020	Reconstruction of Pedestrian Path (Sign)	0	EA	\$ 200.00	\$ -
TDCOT 008-0021	Reconstruction of Pedestrian Path (Sign)	0	EA	\$ 200.00	\$ -
TDCOT 008-0022	Reconstruction of Pedestrian Path (Sign)	0	EA	\$ 200.00	\$ -
TDCOT 008-0023	Reconstruction of Pedestrian Path (Sign)	0	EA	\$ 200.00	\$ -
TDCOT 008-0024	Reconstruction of Pedestrian Path (Sign)	0	EA	\$ 200.00	\$ -
TDCOT 008-0025	Reconstruction of Pedestrian Path (Sign)	0	EA	\$ 200.00	\$ -
TDCOT 008-0026	Reconstruction of Pedestrian Path (Sign)	0	EA	\$ 200.00	\$ -
TDCOT 008-0027	Reconstruction of Pedestrian Path (Sign)	0	EA	\$ 200.00	\$ -
TDCOT 008-0028	Reconstruction of Pedestrian Path (Sign)	0	EA	\$ 200.00	\$ -
TDCOT 008-0029	Reconstruction of Pedestrian Path (Sign)	0	EA	\$ 200.00	\$ -
TDCOT 008-0030	Reconstruction of Pedestrian Path (Sign)	0	EA	\$ 200.00	\$ -
TDCOT 008-0031	Reconstruction of Pedestrian Path (Sign)	0	EA	\$ 200.00	\$ -
TDCOT 008-0032	Reconstruction of Pedestrian Path (Sign)	0	EA	\$ 200.00	\$ -
TDCOT 008-0033	Reconstruction of Pedestrian Path (Sign)	0	EA	\$ 200.00	\$ -
TDCOT 008-0034	Reconstruction of Pedestrian Path (Sign)	0	EA	\$ 200.00	\$ -
TDCOT 008-0035	Reconstruction of Pedestrian Path (Sign)	0	EA	\$ 200.00	\$ -
TDCOT 008-0036	Reconstruction of Pedestrian Path (Sign)	0	EA	\$ 200.00	\$ -
TDCOT 008-0037	Reconstruction of Pedestrian Path (Sign)	0	EA	\$ 200.00	\$ -
TDCOT 008-0038	Reconstruction of Pedestrian Path (Sign)	0	EA	\$ 200.00	\$ -
TDCOT 008-0039	Reconstruction of Pedestrian Path (Sign)	0	EA	\$ 200.00	\$ -
TDCOT 008-0040	Reconstruction of Pedestrian Path (Sign)	0	EA	\$ 200.00	\$ -
TDCOT 008-0041	Reconstruction of Pedestrian Path (Sign)	0	EA	\$ 200.00	\$ -
TDCOT 008-0042	Reconstruction of Pedestrian Path (Sign)	0	EA	\$ 200.00	\$ -
TDCOT 008-0043	Reconstruction of Pedestrian Path (Sign)	0	EA	\$ 200.00	\$ -
TDCOT 008-0044	Reconstruction of Pedestrian Path (Sign)	0	EA	\$ 200.00	\$ -
TDCOT 008-0045	Reconstruction of Pedestrian Path (Sign)	0	EA	\$ 200.00	\$ -
TDCOT 008-0046	Reconstruction of Pedestrian Path (Sign)	0	EA	\$ 200.00	\$ -
TDCOT 008-0047	Reconstruction of Pedestrian Path (Sign)	0	EA	\$ 200.00	\$ -
TDCOT 008-0048	Reconstruction of Pedestrian Path (Sign)	0	EA	\$ 200.00	\$ -
TDCOT 008-0049	Reconstruction of Pedestrian Path (Sign)	0	EA	\$ 200.00	\$ -
TDCOT 008-0050	Reconstruction of Pedestrian Path (Sign)	0	EA	\$ 200.00	\$ -
TDCOT 008-0051	Reconstruction of Pedestrian Path (Sign)	0	EA	\$ 200.00	\$ -
TDCOT 008-0052	Reconstruction of Pedestrian Path (Sign)	0	EA	\$ 200.00	\$ -
TDCOT 008-0053	Reconstruction of Pedestrian Path (Sign)	0	EA	\$ 200.00	\$ -
TDCOT 008-0054	Reconstruction of Pedestrian Path (Sign)	0	EA	\$ 200.00	\$ -
TDCOT 008-0055	Reconstruction of Pedestrian Path (Sign)	0	EA	\$ 200.00	\$ -
TDCOT 008-0056	Reconstruction of Pedestrian Path (Sign)	0	EA	\$ 200.00	\$ -
TDCOT 008-0057	Reconstruction of Pedestrian Path (Sign)	0	EA	\$ 200.00	\$ -
TDCOT 008-0058	Reconstruction of Pedestrian Path (Sign)	0	EA	\$ 200.00	\$ -
TDCOT 008-0059	Reconstruction of Pedestrian Path (Sign)	0	EA	\$ 200.00	\$ -
TDCOT 008-0060	Reconstruction of Pedestrian Path (Sign)	0	EA	\$ 200.00	\$ -
TDCOT 008-0061	Reconstruction of Pedestrian Path (Sign)	0	EA	\$ 200.00	\$ -
TDCOT 008-0062	Reconstruction of Pedestrian Path (Sign)	0	EA	\$ 200.00	\$ -
TDCOT 008-0063	Reconstruction of Pedestrian Path (Sign)	0	EA	\$ 200.00	\$ -
TDCOT 008-0064	Reconstruction of Pedestrian Path (Sign)	0	EA	\$ 200.00	\$ -
TDCOT 008-0065	Reconstruction of Pedestrian Path (Sign)	0	EA	\$ 200.00	\$ -
TDCOT 008-0066	Reconstruction of Pedestrian Path (Sign)	0	EA	\$ 200.00	\$ -
TDCOT 008-0067	Reconstruction of Pedestrian Path (Sign)	0	EA	\$ 200.00	\$ -
TDCOT 008-0068	Reconstruction of Pedestrian Path (Sign)	0	EA	\$ 200.00	\$ -
TDCOT 008-0069	Reconstruction of Pedestrian Path (Sign)	0	EA	\$ 200.00	\$ -
TDCOT 008-0070	Reconstruction of Pedestrian Path (Sign)	0	EA	\$ 200.00	\$ -
TDCOT 008-0071	Reconstruction of Pedestrian Path (Sign)	0	EA	\$ 200.00	\$ -
TDCOT 008-0072	Reconstruction of Pedestrian Path (Sign)	0	EA	\$ 200.00	\$ -
TDCOT 008-0073	Reconstruction of Pedestrian Path (Sign)	0	EA	\$ 200.00	\$ -
TDCOT 008-0074	Reconstruction of Pedestrian Path (Sign)	0	EA	\$ 200.00	\$ -
TDCOT 008-0075	Reconstruction of Pedestrian Path (Sign)	0	EA	\$ 200.00	\$ -
TDCOT 008-0076	Reconstruction of Pedestrian Path (Sign)	0	EA	\$ 200.00	\$ -
TDCOT 008-0077	Reconstruction of Pedestrian Path (Sign)	0	EA	\$ 200.00	\$ -
TDCOT 008-0078	Reconstruction of Pedestrian Path (Sign)	0	EA	\$ 200.00	\$ -
TDCOT 008-0079	Reconstruction of Pedestrian Path (Sign)	0	EA	\$ 200.00	\$ -
TDCOT 008-0080	Reconstruction of Pedestrian Path (Sign)	0	EA	\$ 200.00	\$ -
TDCOT 008-0081	Reconstruction of Pedestrian Path (Sign)	0	EA	\$ 200.00	\$ -
TDCOT 008-0082	Reconstruction of Pedestrian Path (Sign)	0	EA	\$ 200.00	\$ -
TDCOT 008-0083	Reconstruction of Pedestrian Path (Sign)	0	EA	\$ 200.00	\$ -
TDCOT 008-0084	Reconstruction of Pedestrian Path (Sign)	0	EA	\$ 200.00	\$ -
TDCOT 008-0085	Reconstruction of Pedestrian Path (Sign)	0	EA	\$ 200.00	\$ -
TDCOT 008-0086	Reconstruction of Pedestrian Path (Sign)	0	EA	\$ 200.00	\$ -
TDCOT 008-0087	Reconstruction of Pedestrian Path (Sign)	0	EA	\$ 200.00	\$ -
TDCOT 008-0088	Reconstruction of Pedestrian Path (Sign)	0	EA	\$ 200.00	\$ -
TDCOT 008-0089	Reconstruction of Pedestrian Path (Sign)	0	EA	\$ 200.00	\$ -
TDCOT 008-0090	Reconstruction of Pedestrian Path (Sign)	0	EA	\$ 200.00	\$ -
TDCOT 008-0091	Reconstruction of Pedestrian Path (Sign)	0	EA	\$ 200.00	\$ -
TDCOT 008-0092	Reconstruction of Pedestrian Path (Sign)	0	EA	\$ 200.00	\$ -
TDCOT 008-0093	Reconstruction of Pedestrian Path (Sign)	0	EA	\$ 200.00	\$ -
TDCOT 008-0094	Reconstruction of Pedestrian Path (Sign)	0	EA	\$ 200.00	\$ -
TDCOT 008-0095	Reconstruction of Pedestrian Path (Sign)	0	EA	\$ 200.00	\$ -
TDCOT 008-0096	Reconstruction of Pedestrian Path (Sign)	0	EA	\$ 200.00	\$ -
TDCOT 008-0097	Reconstruction of Pedestrian Path (Sign)	0	EA	\$ 200.00	\$ -
TDCOT 008-0098	Reconstruction of Pedestrian Path (Sign)	0	EA	\$ 200.00	\$ -
TDCOT 008-0099	Reconstruction of Pedestrian Path (Sign)	0	EA	\$ 200.00	\$ -
TDCOT 008-0100	Reconstruction of Pedestrian Path (Sign)	0	EA	\$ 200.00	\$ -

Notes for Cost Projection:
 No Design Completed
 Preliminary Design
 Final Design

Engineering (P+I) 15% \$ 5,151.43
 Contingency (P+I) 20% \$ 6,382.87
 Estimated Project Cost: \$ 46,368.89

Location Map: [Map showing intersection of E Town East Blvd and Towne Centre Dr]

Intersection	North	East	South	West	Possible Solutions
Path of travel pavement condition					
Path of travel existing slope is greater than 5%					
Path of travel cross slope is greater than 5%					
Crosswalk width is less than 6'					

Curb Ramp Issues	Curb Ramp #1 (1', 1" or 24" in ramp side indicates in existing ramp)	Possible Solutions
	1A, 1B, 2A, 2B, 3A, 3B, 4A, 4B, 5A, 5B	
Curb ramp does not meet ADA requirements		
Curb ramp does not meet ADA requirements		
No 4" x 4" clear space at base of curb ramp		
Curb ramp slope is not 2% or less transverse adjacent surface	X	Remove and replace curb ramp; if median improvement, use aggregate
Ramp cross slope is greater than 2%	X	
Curb ramp running slope is greater than 2%	X	
Blended transition running slope is greater than 5%	X	
Curb ramp running slope is greater than 5%	X	
Curb ramp cross slope is greater than 2%	X	
Curb ramp cross slope is greater than 5%	X	
Curb ramp width is less than 48"	X	
Curb ramp width is less than 48"	X	
Permanent obstruction (> 20") in curb ramp/landing/area		
Temporary obstruction (> 20") in curb ramp/landing/area		
No level surface at base of curb ramp		
No color contrast at base of curb ramp		
Landing area does not exist and is needed	X	Remove and replace landing area
Landing area is less than 5' x 5' or slope greater than 2%	X	
Missing or no pedestrian push button	X	Install push button pole and relocate pedestrian path buttons
Pedestrian push button is offset more than 5' from the nearest crosswalk edge	X	
Pedestrian push button offset more than 10' from curb face	X	
Pedestrian push button is not parallel to crosswalk	X	
Pedestrian push button height is greater than 48"	X	
Pedestrian push button diameter is not 2"	X	
Pedestrian push button sign does not exist	X	Remove and replace pedestrian push button sign
Pedestrian push button sign is not MUTCD approved	X	Install clear floor space
Clear floor space does not exist and is needed	X	Remove and replace clear floor space
Clear floor space for pedestrian push button is less than 30" x 48" or has a slope greater than 2%	X	
Missing or no pedestrian signal heads	X	
Curb ramp transition onto roadway is greater than 0.25"	X	
Corner slope of the gutter or street at the foot of the curb ramp is greater than 5%	X	
Obstruction at base of curb ramp	X	Fix obstruction

Photolog

Curb Ramp Recommendation Details:
 Type 1-11 (Standard Corner Ramp) 0 EA
 Type 20 (Median Ramp with Shared Landing) 0 EA
 Type 21 (Median Curb-Thru Ramp) 0 EA
 Type 22 (Crosswalk Island Curb-Thru Ramp) 0 EA

Options of Probable Construction Cost Disclaimer:
 The Engineer has no control over the cost of labor, materials, equipment, or over the Contractor's methods of determining prices or over competitive bidding or market conditions. Options of probable costs provided herein are based on the information known to Engineer at this time and represent only the Engineer's judgment as a design professional familiar with the construction industry. The Engineer cannot and does not guarantee that proposed, bid, or actual construction costs will not vary from its options of probable costs.

Project Location Map Source:
 Esri, DeLorme, NAVTEQ, USGS, Intermap, iPC, NRCAN, Esri Japan, METI, Esri China (Hong Kong), Swis (Thailand), TomTom, 2013, DigitalGlobe, GeoEye, IGN, AeriX, GEBCO, AeroGRID, IGN, Esri, Mapbox, Swis, 2013, and the GIS User Community

Map of Project Description for Project #3 Intersection of E Town East Blvd and Towne Centre Dr

Task 8 – Public Outreach

Goals

- Introduce the project
- Help prioritize facilities to be remediated during implementation of the improvements identified in the Transition Plan
- Gather input regarding accessibility concerns/issues

Task 8 – Public Outreach

Major Tasks

- 1. Meet with the City’s Advisory Committee on People with Disabilities**
 - Three meetings to 1) introduce the project, 2) receive input on the self-evaluation and facility assessments, and 3) receive input on the draft Transition Plan deliverables
- 2. Online public access survey and mapping tool**
 - Administer through the City’s website, social media, etc.
 - Send to Advisory Committee and distribute through organizations

Task 8 – Public Outreach

13. Have you encountered any other accessibility-related challenges/concerns related to the public rights-of-way within the City of Boerne not covered by the questions above?

- Yes
- No
- No, but someone I know has.

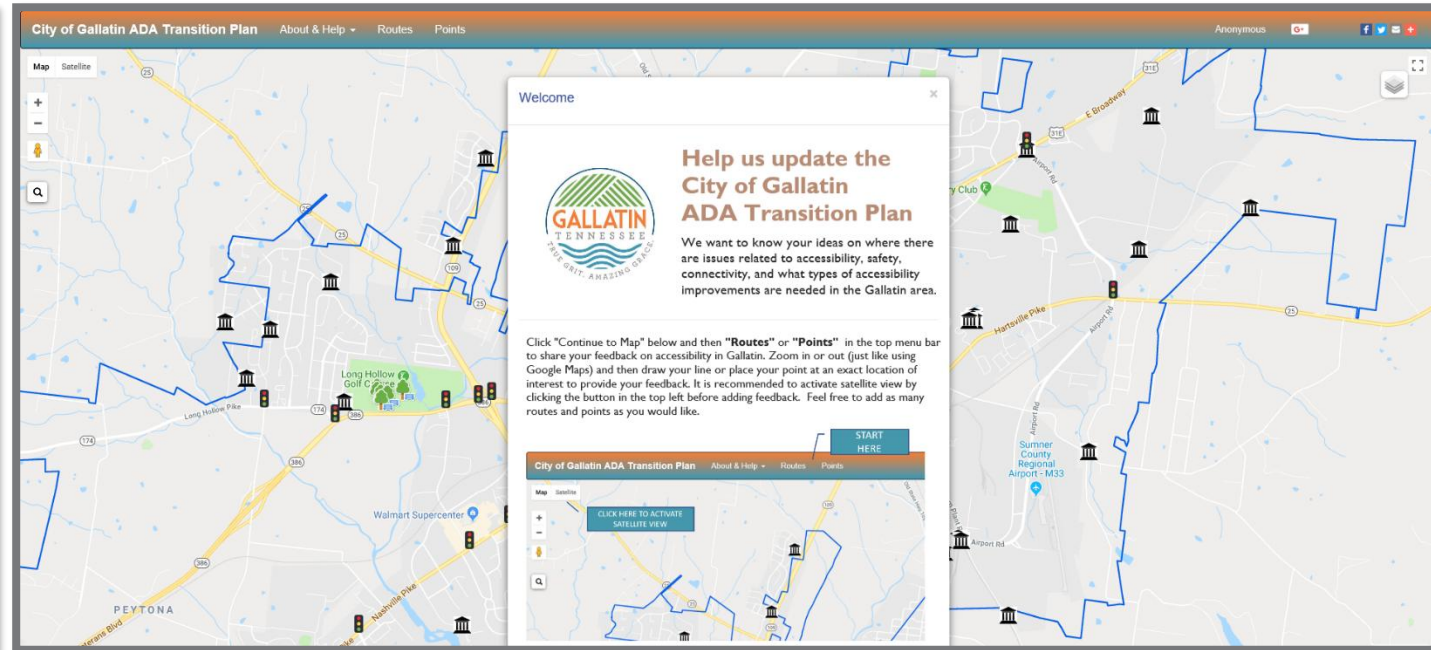
Please explain and provide specific locations:



Prev

Next

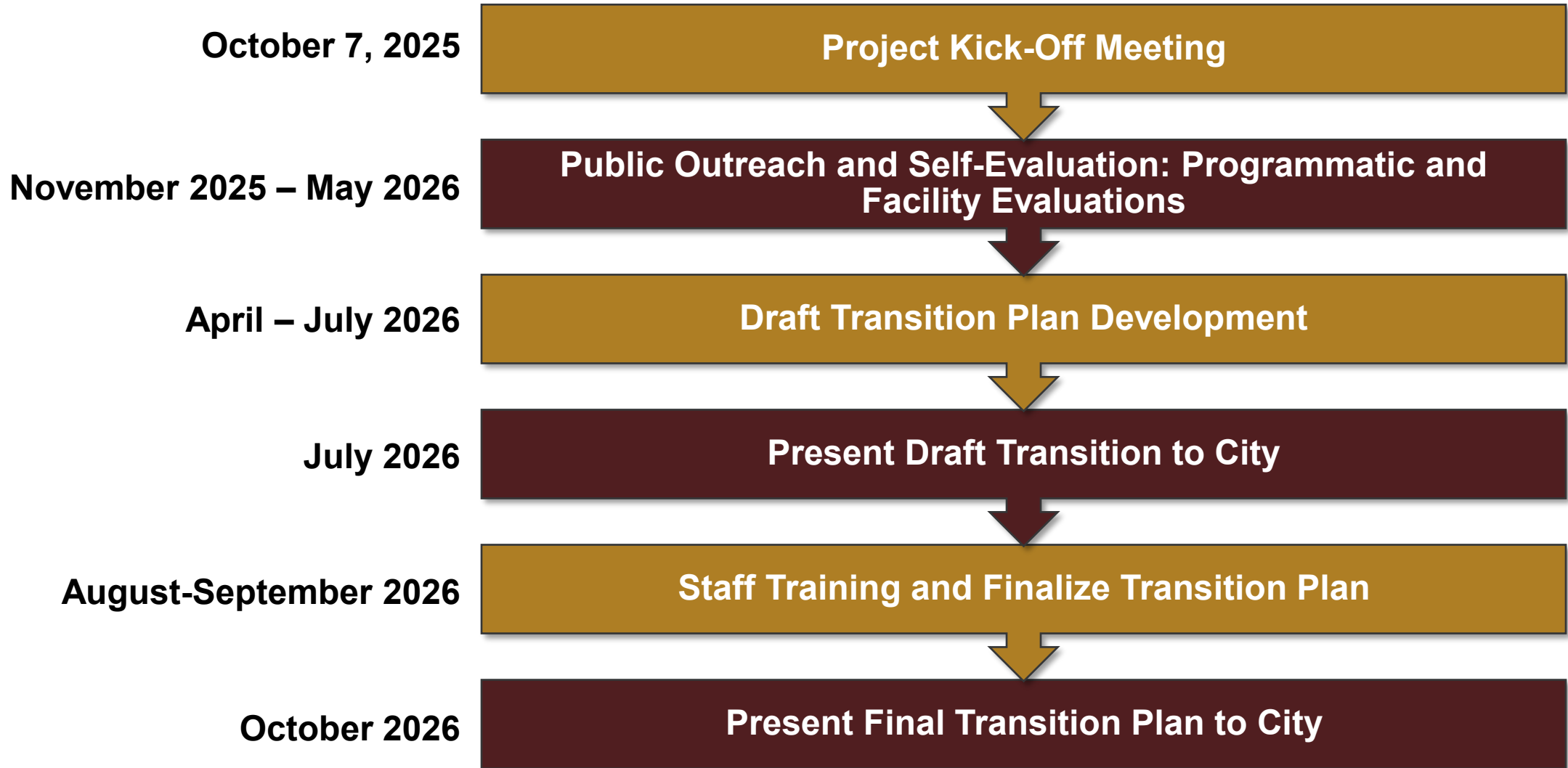
Online Survey



Online Mapping Tool

Confirm project points of contact for public outreach.

Proposed Project Schedule



We Need Your Input

- Questions and concerns?
- How is the City doing regarding accessibility?
- Process
- Public accommodations
- Specific facilities or locations
- High priority areas
- Website and other communication tools
- Suggested improvements



City of Burleson ADA Transition Plan Update

**Advisory Committee on
Persons with Disabilities**

January 15, 2026

THE CITY OF
BURLESON
TEXAS