

Schematic Design Phase Services for Alsbury Boulevard – Phase 3 (From Prairie Grove Lane to CR 914)

Professional
Services Agreement

June 16, 2025

Project Background



Project Development Process

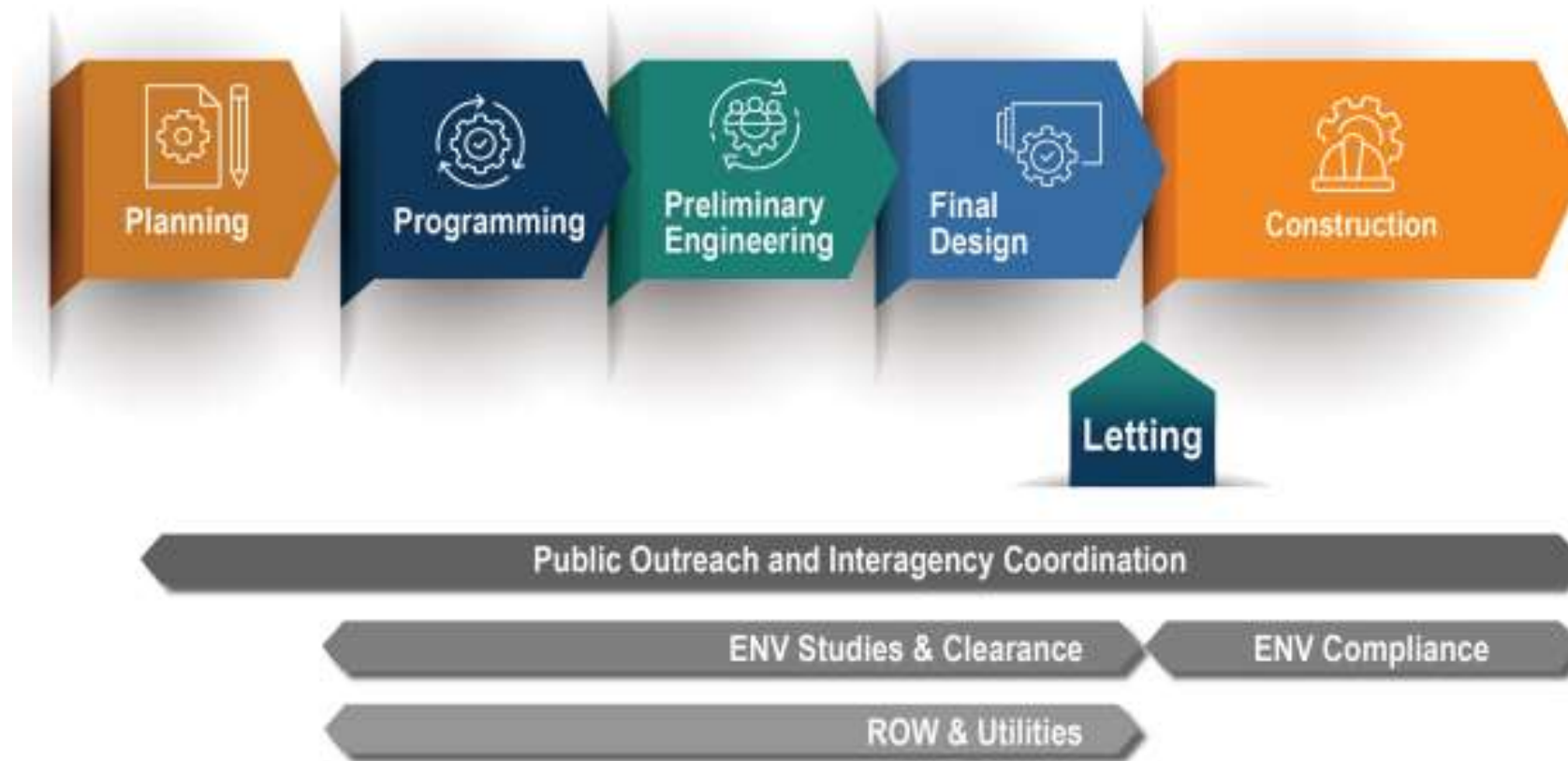
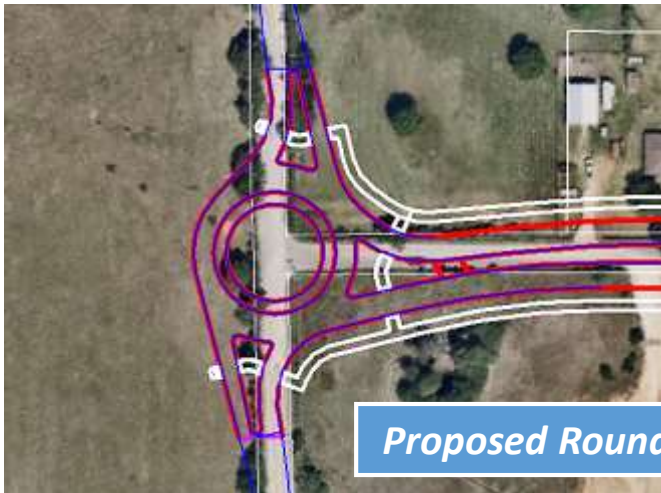
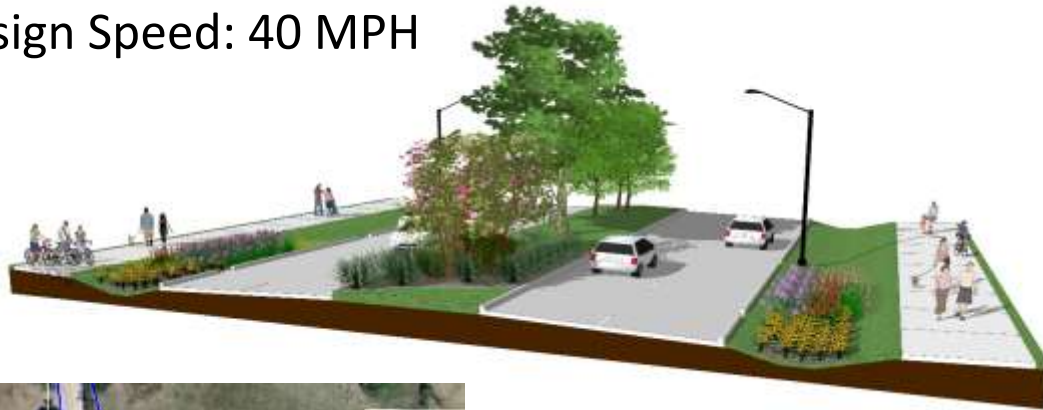


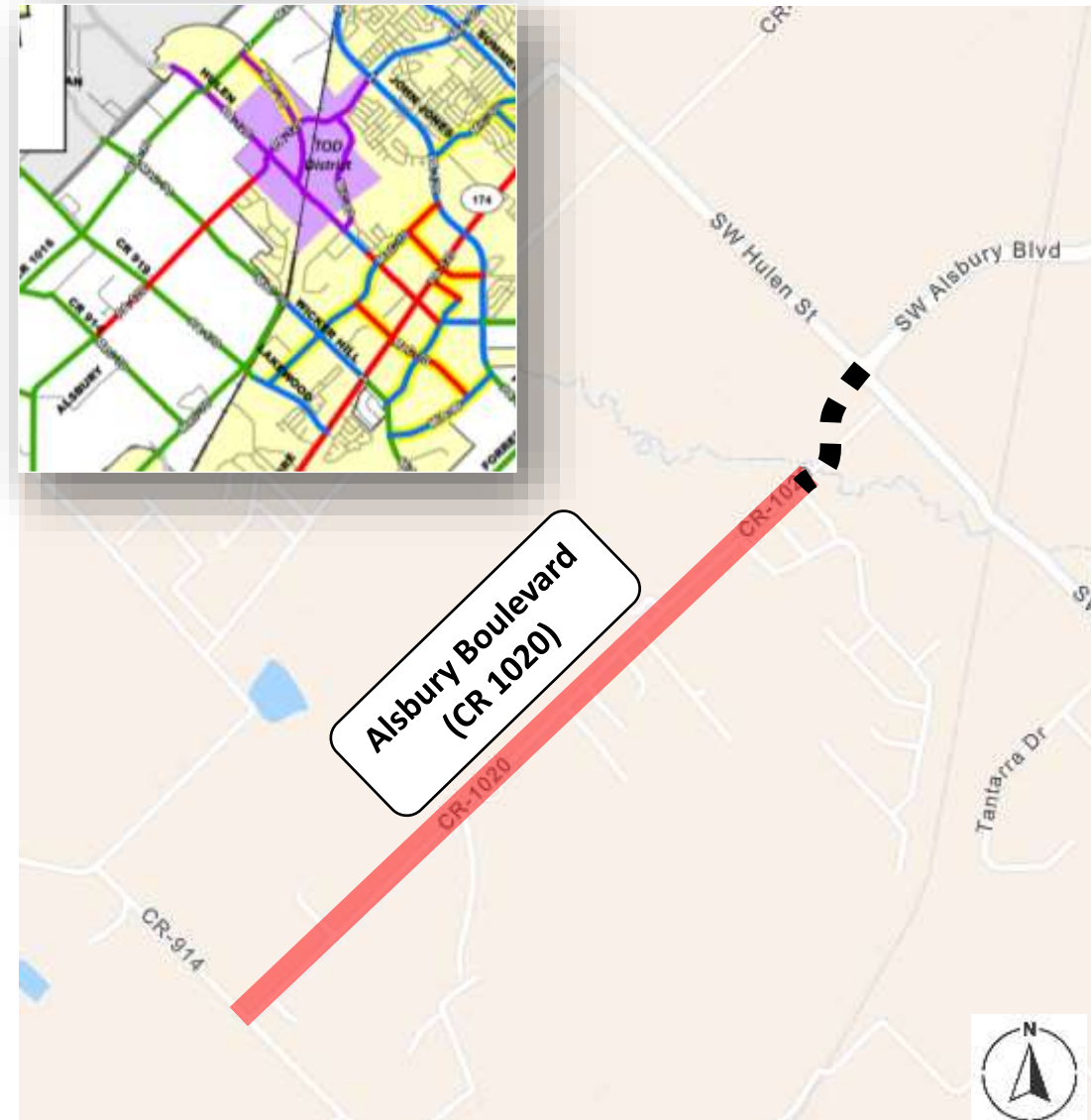
Figure 1-1: TxDOT's Project Development Process

Project Information

- 1.75 Miles – Principal Arterial - 4-Lane Divided Roadway – 120' ROW
 - CR 914 to Prairie Grove Lane
- Design Speed: 40 MPH

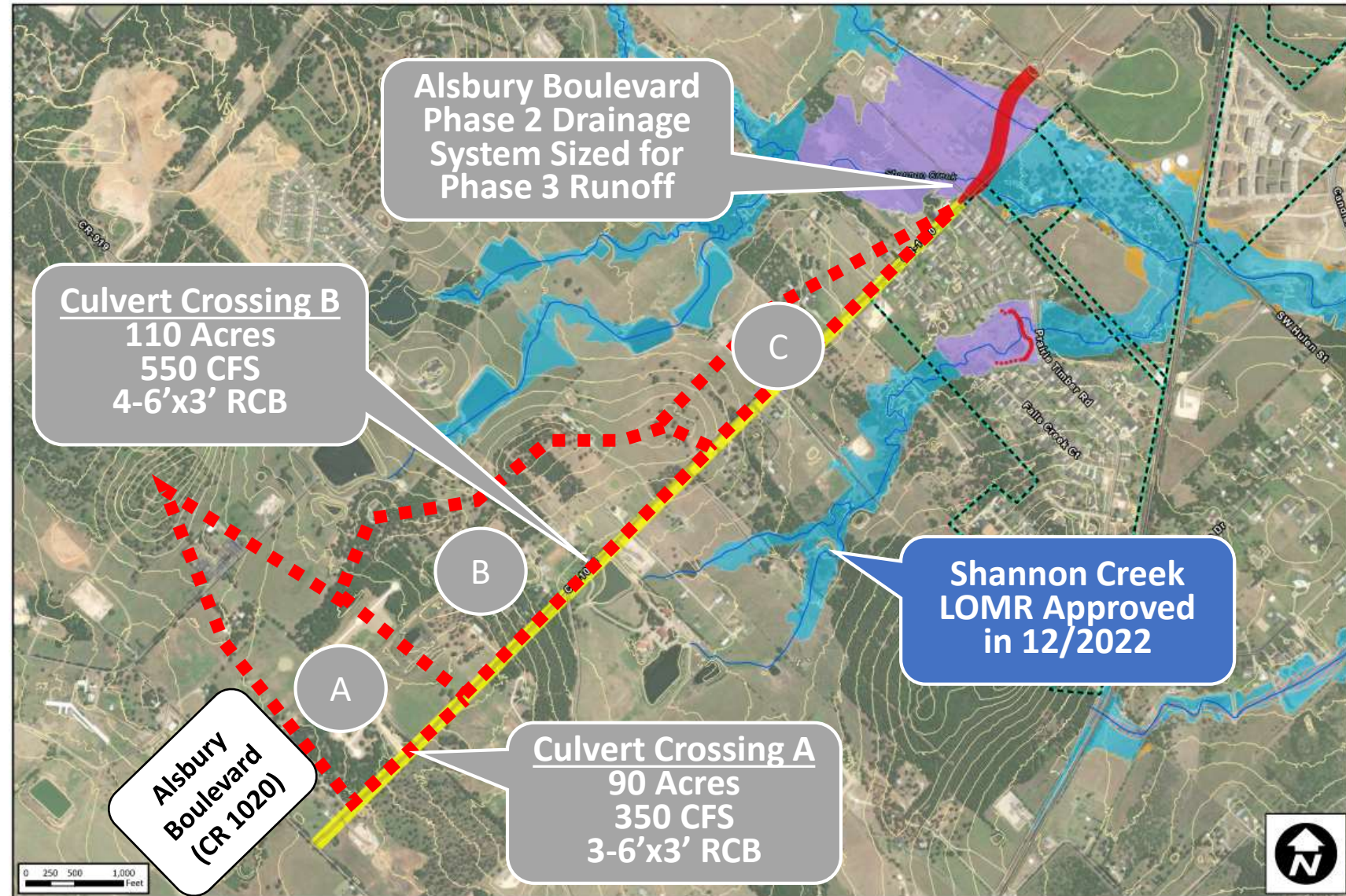


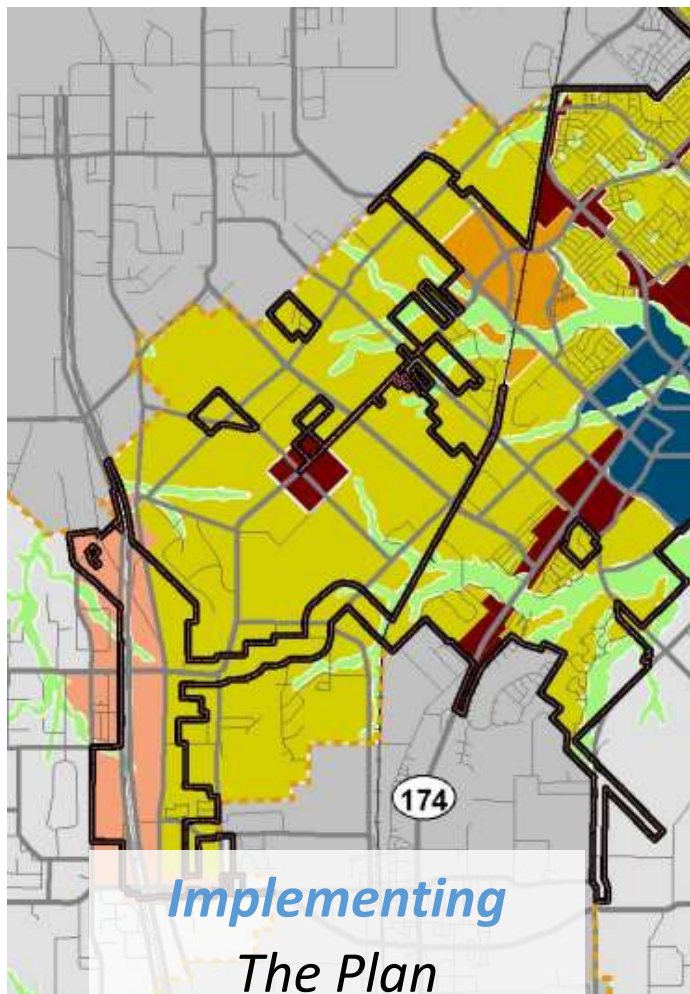
Proposed Roundabout at CR 914



Project Information

- 3 Defined Drainage Areas
 - Future Development
 - Open Channels
 - Easement Areas
 - Existing Ponds





Project Benefits

- Freese & Nichols, Inc. selected as consultant
- Same consultant as Alsbury Phases 1 & 2
- Prepared conceptual alignment for Phase 3

Next Steps



- Freese & Nichols, Inc. selected as consultant
- Scope of contract
 - TASK 1. PROJECT MANAGEMENT
 - TASK 2. 30% SCHEMATIC DESIGN
 - TASK 3. 60% SCHEMATIC DESIGN
 - TASK 4. 90% AND 100% SCHEMATIC DESIGN
 - TASK 5. TOPOGRAPHIC SURVEY AND SURVEY DOCUMENTS
 - TASK 6. SUBSURFACE UTILITY ENGINEERING
 - TASK 7. PUBLIC INVOLVEMENT AND STAKEHOLDER COORDINATION
 - TASK 8. ENVIRONMENTAL CATEGORICAL EXCLUSION
 - TASK 9. STORMWATER ANALYSIS
 - TASK 10. TXDOT COORDINATION
- Fee: \$1,645,000

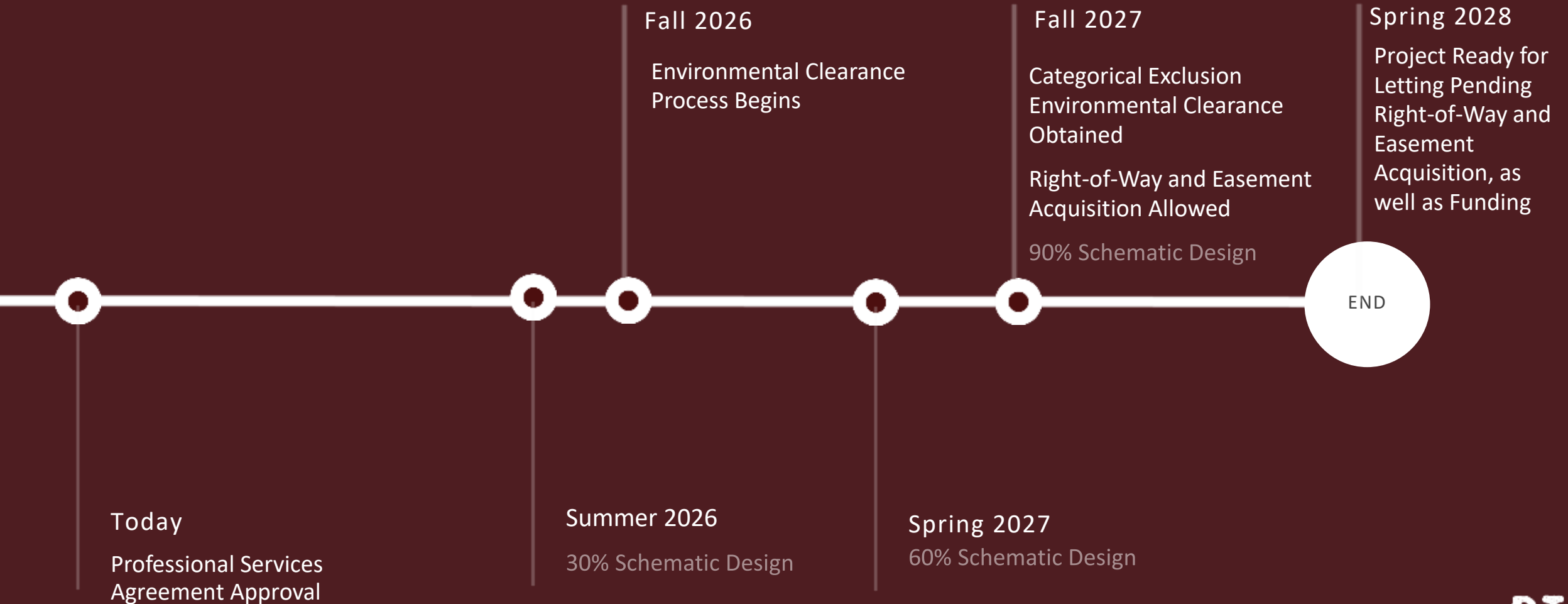
Project Development Process



Figure 1-1: TxDOT's Project Development Process

This PSA

Project Timeline



Action Requested

Consider approval of a Professional Services Agreement with Freese & Nichols, Inc. for schematic design phase services in conjunction with Alsbury Boulevard - Phase 3 (from Prairie Grove Lane to CR914) in the amount of \$1,645,000

Questions / Discussion

Travis N. Attanasio, PE
Senior Capital Engineer
tattanasio@burlesontx.com
817-426-9614