

INDUSTRIAL BLVD. PUMP STATION EXPANSION & ALSBURY PUMP STATION DECOMMISSIONING

Professional Services Agreement



PUMP STATION BASICS

A - INPUT WATER

(can be from a treatment plant or in our case, from our Fort Worth Water supply)

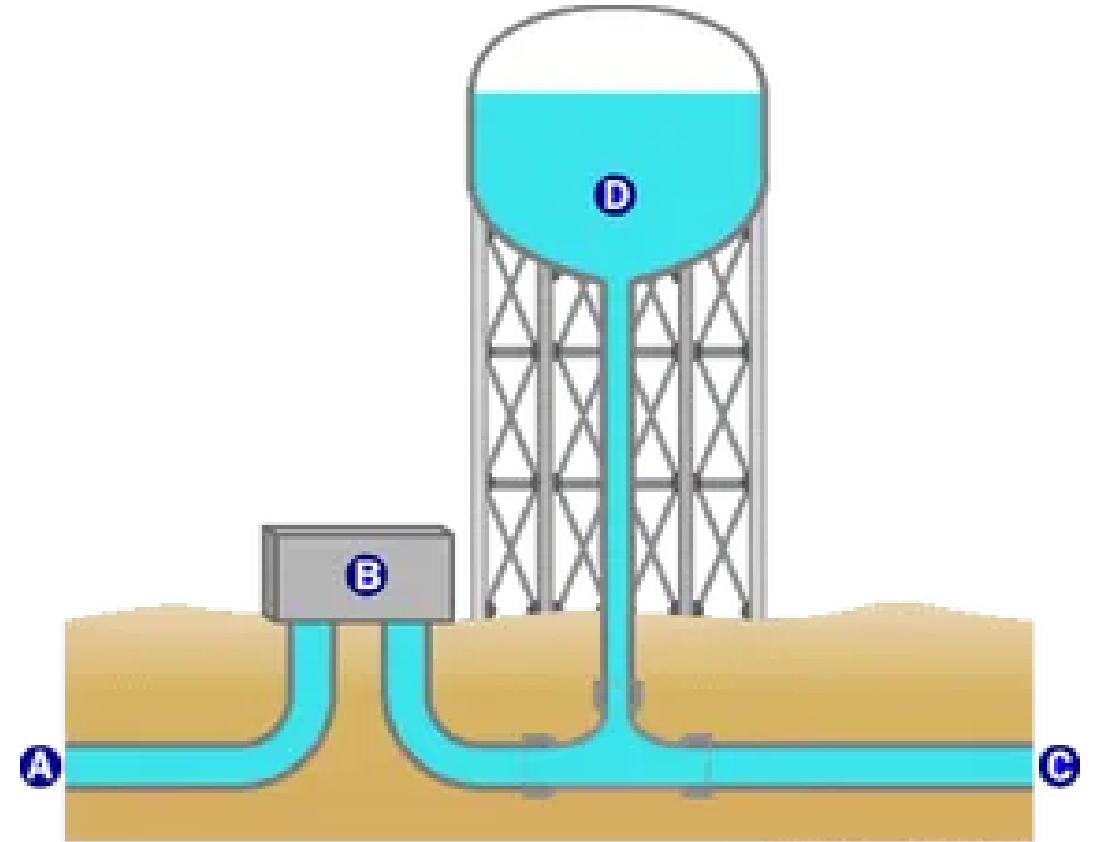
B - PUMP

(typically multiple pumps or a pump station used to fill storage tanks and/or boost pressure to feeder lines)

C - WATER FROM STORAGE (OR BOOSTER PUMPS) TO PRIMARY FEEDER LINES AND ON TO CUSTOMERS

D - WATER STORAGE

(elevated storage also continually pressurizes the local system)



© 2000 How Stuff Works

[HTTPS://MEDIA.HSWSTATIC.COM/](https://media.hswstatic.com/)

BRIEF PROJECT BACKGROUND AND OVERVIEW

ADDITIONAL WATER HAS BEEN SECURED AND ASSOCIATED INFRASTRUCTURE TO DELIVER IT IS IN DESIGN (BURLESON - FORT WORTH PARTNERSHIP)

CURRENT WATER / WASTEWATER CAPITAL IMPROVEMENT PROGRAM INCLUDES THIS PROJECT IN PREPARATION FOR THE ADDITIONAL WATER SUPPLY

THIS PROJECT CONSISTS OF TWO PRIMARY COMPONENTS

- Expansion of the Industrial Blvd. Pump Station
- Decommissioning the Alsbury Blvd. Pump Station

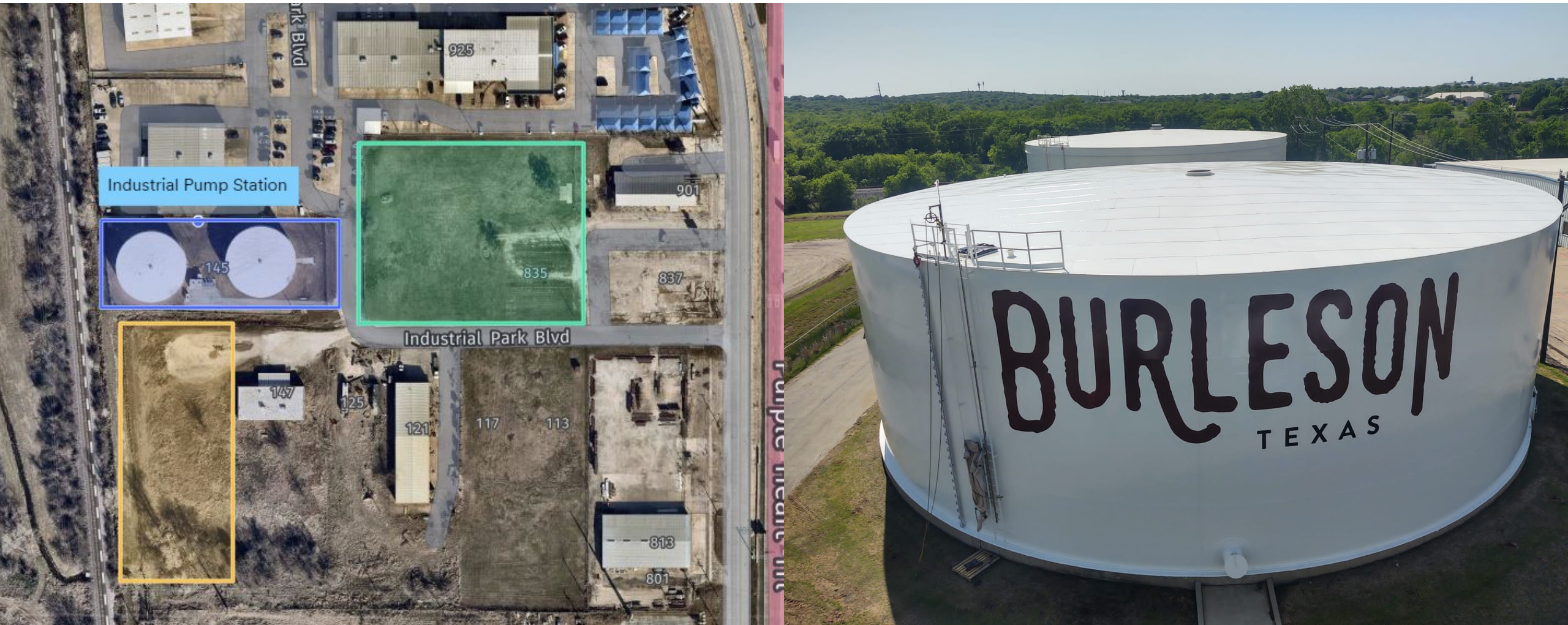
INDUSTRIAL EXPANSION IS NECESSARY TO ACCOMMODATE ADDITIONAL SUPPLY AND ALLOWS ALSBURY STATION TO BE DECOMMISSIONED

THESE TWO PUMP STATIONS COMPRISE THE DELIVERY POINT FOR WHOLESALE WATER PURCHASED FROM FORT WORTH



INDUSTRIAL BLVD PUMP STATION

Expanding the Industrial Blvd Pump Station is necessary to receive the increased water supply in development and estimated to come online in 2027/2028



ALSBURY PUMP STATION DECOMMISSIONING

Alsbury Pump Station is fed directly from Fort Worth supply line as opposed to a ground storage tank that would help equalize consumption demands by users - expanding Industrial Blvd Pump Station is an overall system enhancement rendering Alsbury Pump Station obsolete and making the approx. 0.21-acre site available for redevelopment



PROPOSED PROFESSIONAL SERVICES AGREEMENT

Kimley-Horn and Associates, Inc. was selected through a procurement process to provide engineering design services with a negotiated fee of \$1,154,795



PRELIMINARY ENGINEERING REPORT

Evaluation of future demands for pumping capacity and storage as well as developing two site layout options for Industrial Pump Station expansion



DESIGN

Preparation of preliminary and final design plans



UTILITY COORDINATION/ PERMITTING

Fort Worth future supply line, Oncor & TCEQ Permitting



CONSTRUCTION CONTRACT DOCUMENTS

Preparation of final construction plans and specifications and assisting with bidding



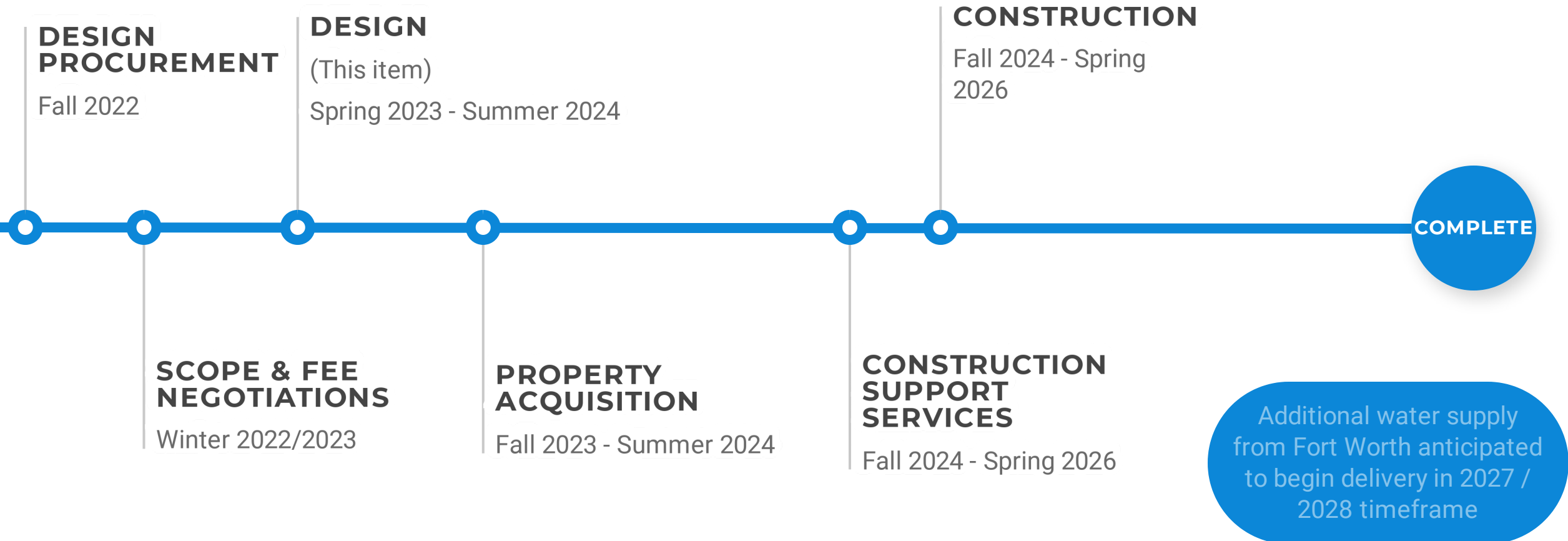
SURVEY & GEOTECH

Topographic survey and Geotechnical analysis

SUB-CONSULTANTS

BGD - Electrical and I&C Design
CMJ Engineering - Geotechnical
Open Range Field Services - Survey
Quroum- Architectural
The Rios Group- SUE

PROJECT TIMELINE



OPTIONS

RECOMMENDED



APPROVE

Approve a professional services agreement with Kimley-Horn and Associates, Inc. for design of the Industrial Blvd Pump Station Expansion and Alsbury Pump Station Decommissioning project in the amount of \$1,154,795.00



DENY

Deny a professional services agreement with Kimley-Horn and Associates, Inc. for design of the Industrial Blvd Pump Station Expansion and Alsbury Pump Station Decommissioning project in the amount of \$1,154,795.00

